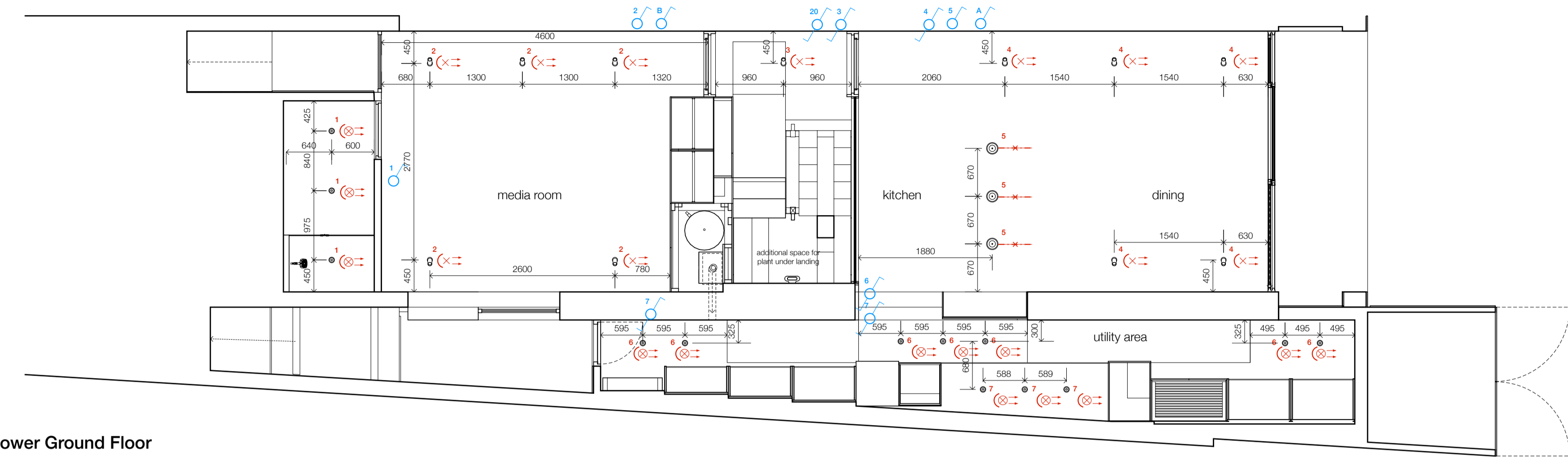
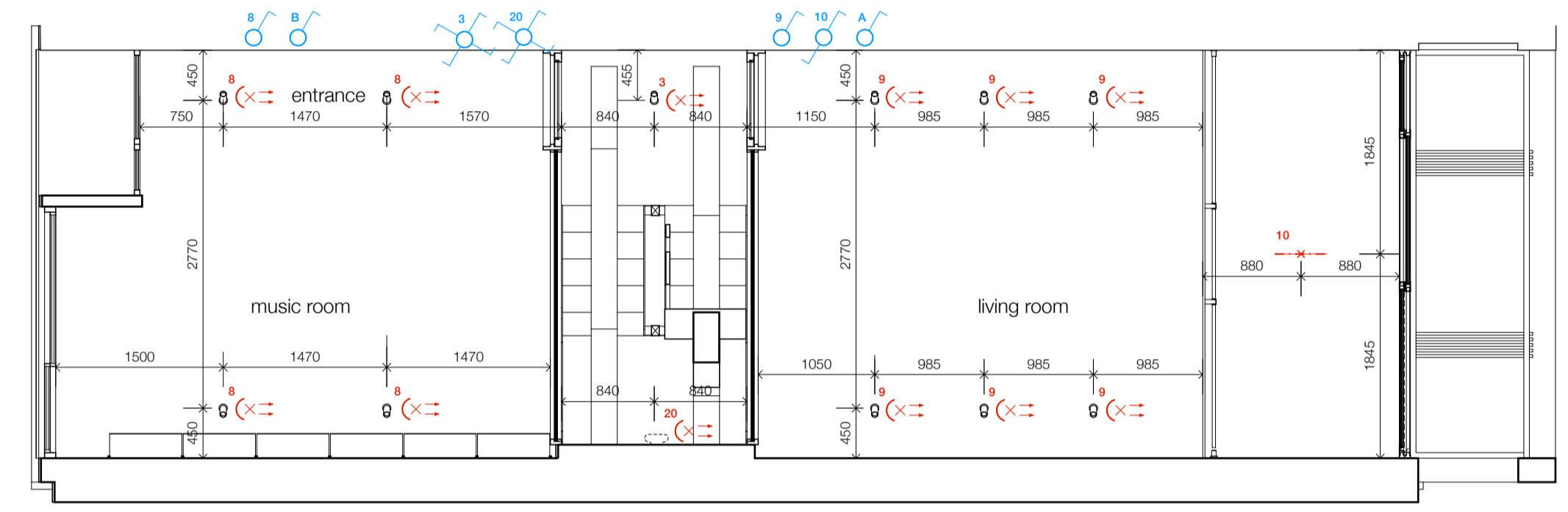
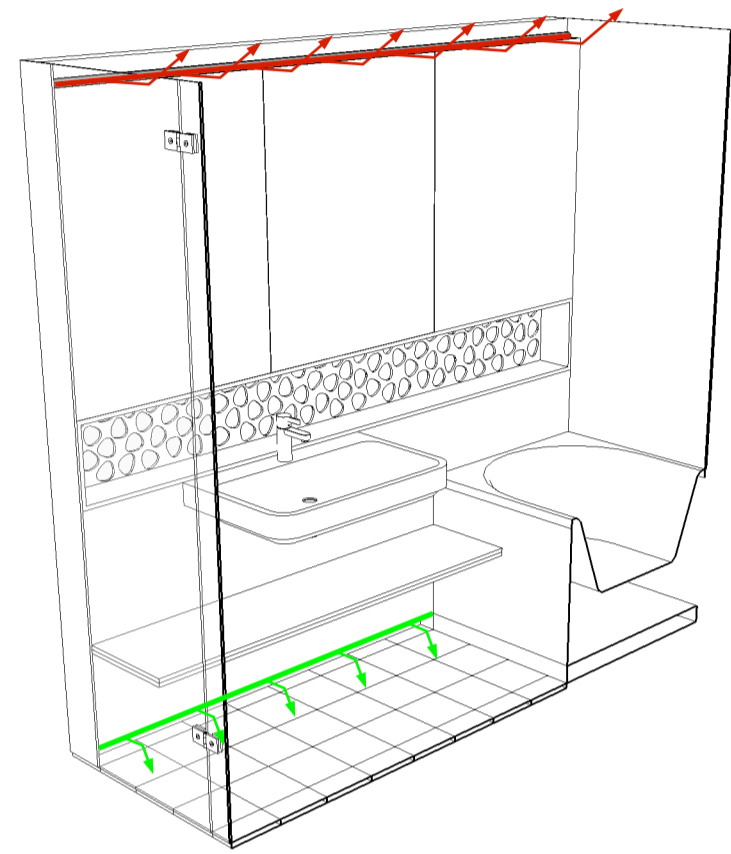


NOTES
 © The drawing copyright Barnaby Gunning 2015
 Do not scale from this drawing
 Dimensions to be verified on site prior to construction.
 Unless otherwise indicated, all dimensions are in millimetres.

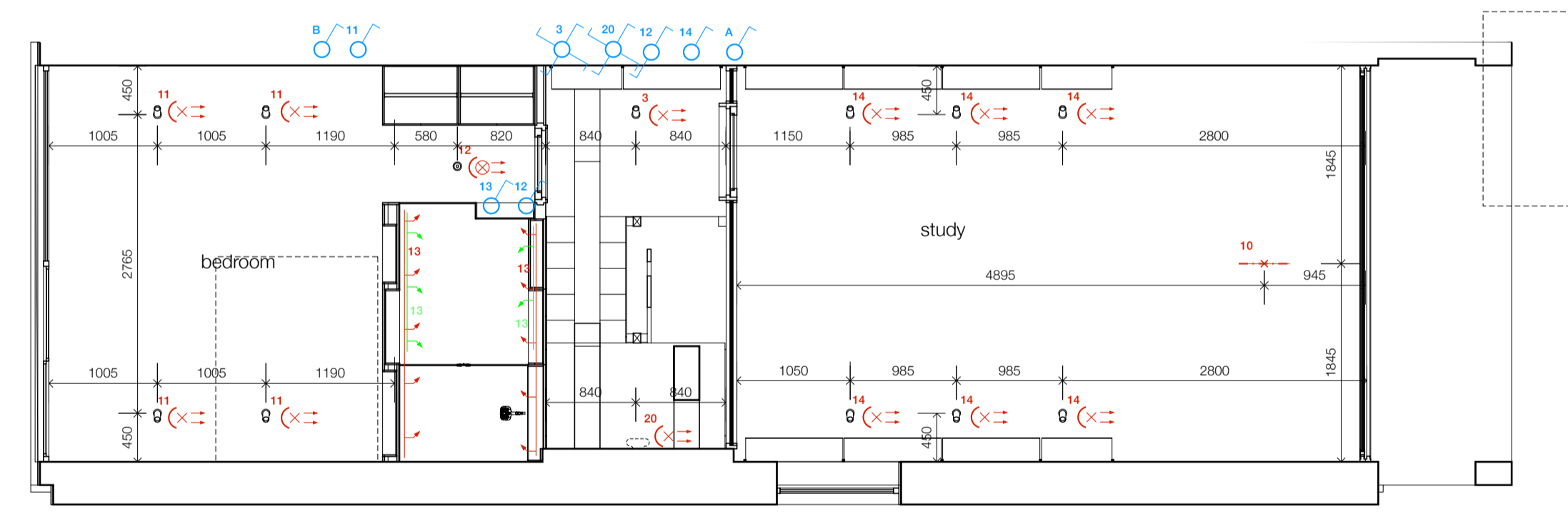


Lower Ground Floor

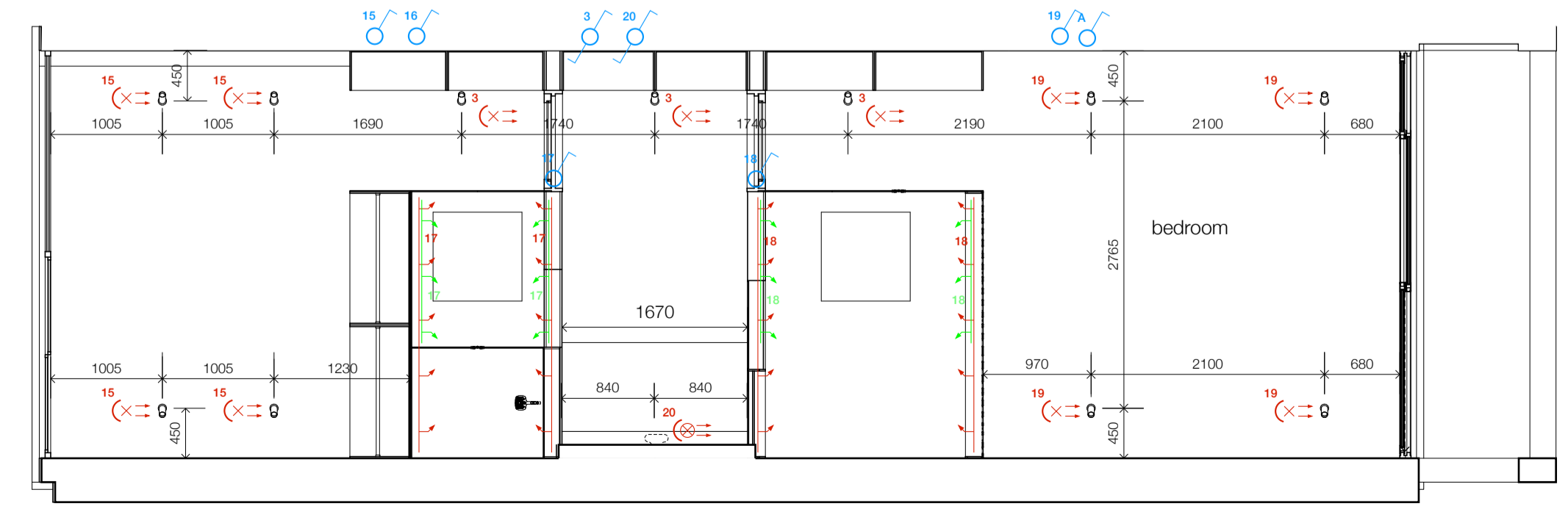
- KEY
- One Pole Switch
 - Two Way Switch
 - Intermediate Switch
 - Spotlight Open
 - Spotlight Enclosed
 - Luminaire on Suspension Cable
 - Over the cabinet Linear LED Light
 - Over the Floor Linear LED Light



Upper Ground Floor



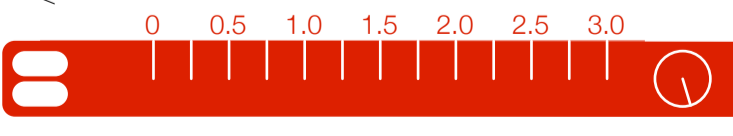
First Floor



Second Floor

F	Revision	11/05/2015
D	Revision	21/04/2015
C	Revised from construction	16/03/2015
O	Revised Layout	26/02/2015
B	Revised for Tender	16/12/2014
A	Initial issue	10/12/2014

Architecture
 63 Loudoun Rd, London NW8 0DQ, UK
 +44 20 73 72 24 24
 barnabygunning.com



Barnaby Gunning
 drawing: 280_G_140 revision: F
 date: 11 May 2015
 address: 90 South Hill Park
 London
 NW3 2SN
 title: General Arrangement Plan
 Lighting
 scale: 1:50@A1
 plotter: CONSTRUCTION