



View of site showing retail unit on corner of High Holborn & Newton Street.



View of site toward High Holborn.



View of left side of site with ventilation grille and access to delivery service road.

The purpose of the project is to bring a unused area of land into use which does not currently does not make a positive contribution to the street. The intention is to use the land to form a extension to the hotel. It is intended that the extension will house a number of functions some connected directly back to the existing hotel and some related to the street.

The extension is intended to read as a separate pavilion that sits in front of the existing building. Below are illustrated some examples in London of extensions to existing buildings that read as pavilions.



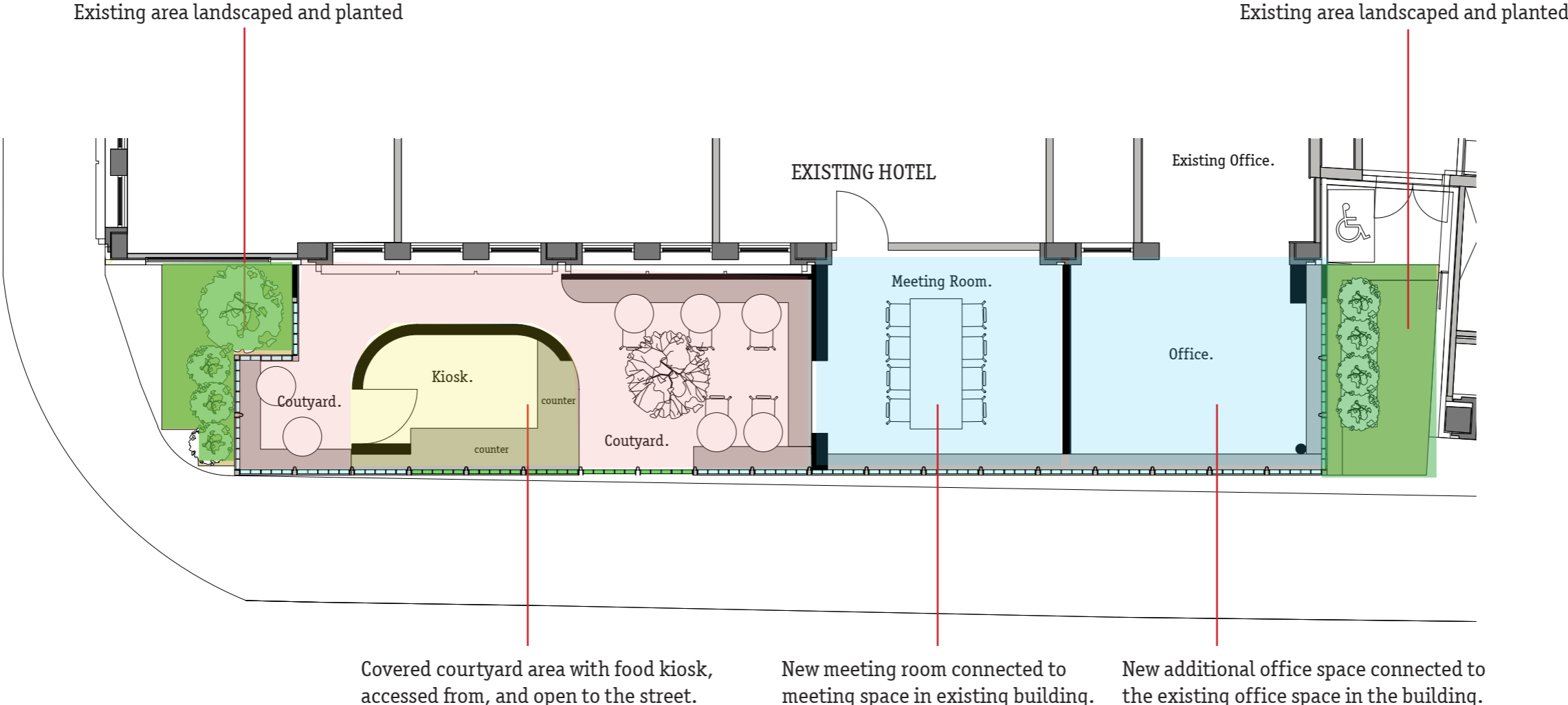
Rather like the Victorian railway shed, the extension is conceived as enclosure which can envelope a variety spaces. Some public and some private. Some open to the air and some enclosed.



Within the enclosure there are two types of spaces created:

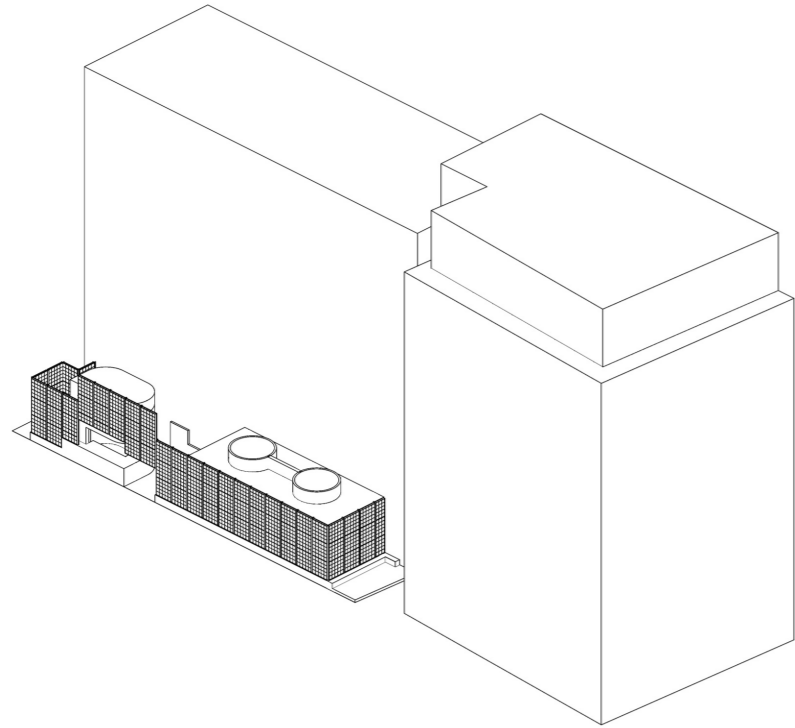
- a) Open to the street and accessed externally from the pavement.
- b) Spaces that extend the existing building and that are accessed internally via the existing hotel.

The diagram below illustrates the different spaces created:

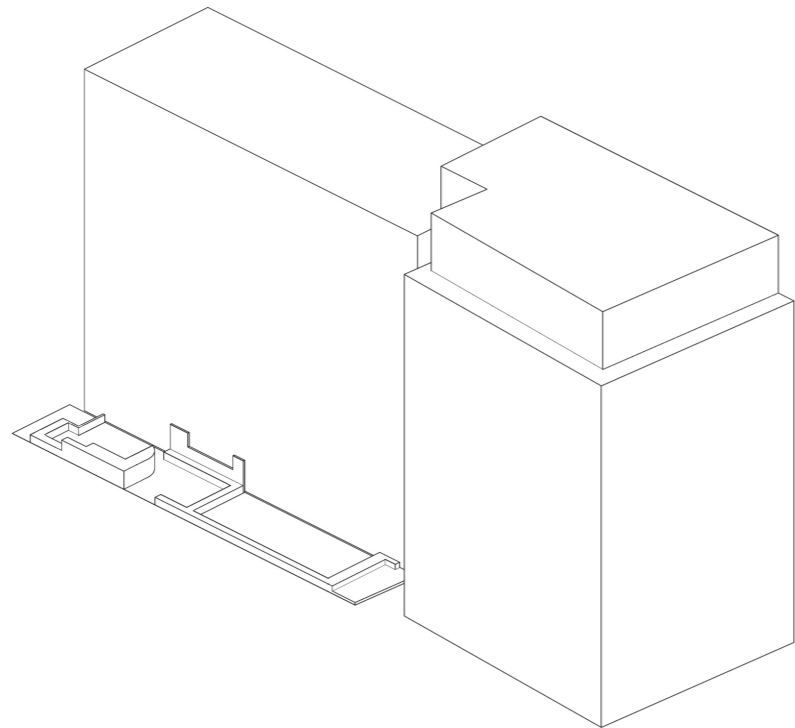


KEY.

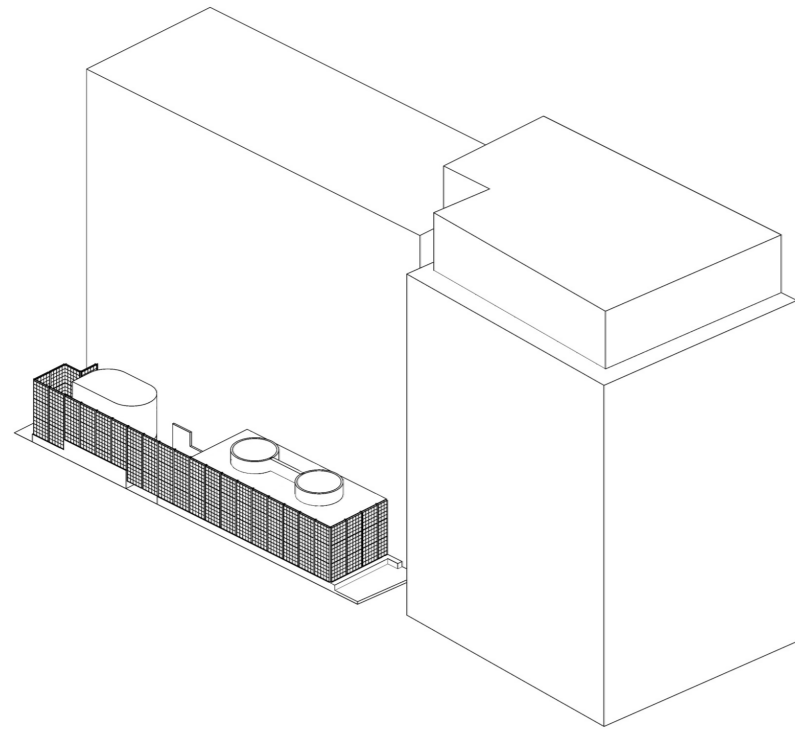
- Existing area landscaped and planted
- Covered Courtyard Area, accessible from the street.
- Spaces accessed from inside the hotel.
- Kiosk area.



The extension is conceived as a independent pavilion which sits alongside the existing building.



The pavilion is formed of two parts a base and a roof. The base (shown above) forms part of the landscape and includes benches, planters and the plinth that forms the base of the building itself.



The base is surrounded by a glass brick wall which opens up in the days to allow access to the courtyard and kiosk. Glimpses of action inside the building can be viewed through the glazing.

In line with the design concept comprising two main elements the pavilion comprises two main materials, the base and the enclosure.

TERRAZZO

The base of the new pavilion is formed from terrazzo. This is intended to match the material of the existing building.



GLASS BRICKS .

The perimeter glazed elements is formed from glass bricks in a steel frame.

