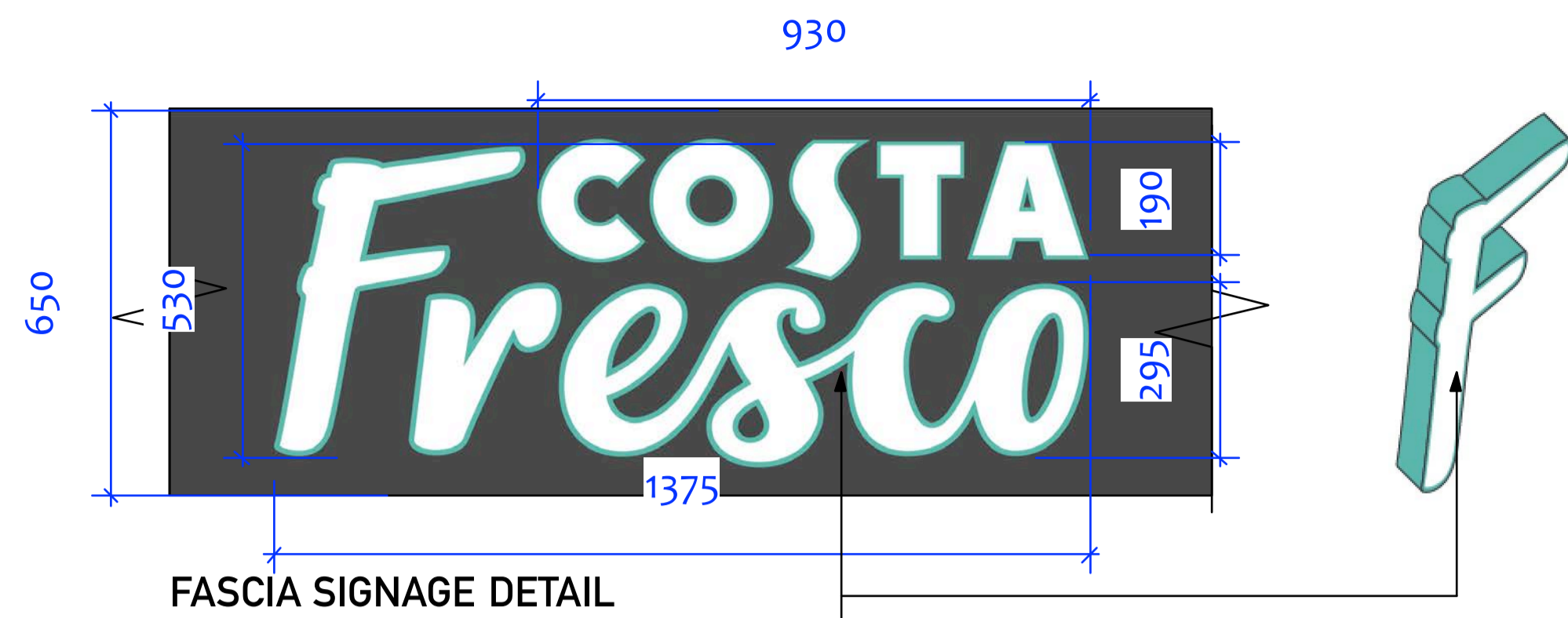


PROJECT CAMBERWICK - TOTTENHAM COURT RD PROPOSED EXTERNAL ELEVATION

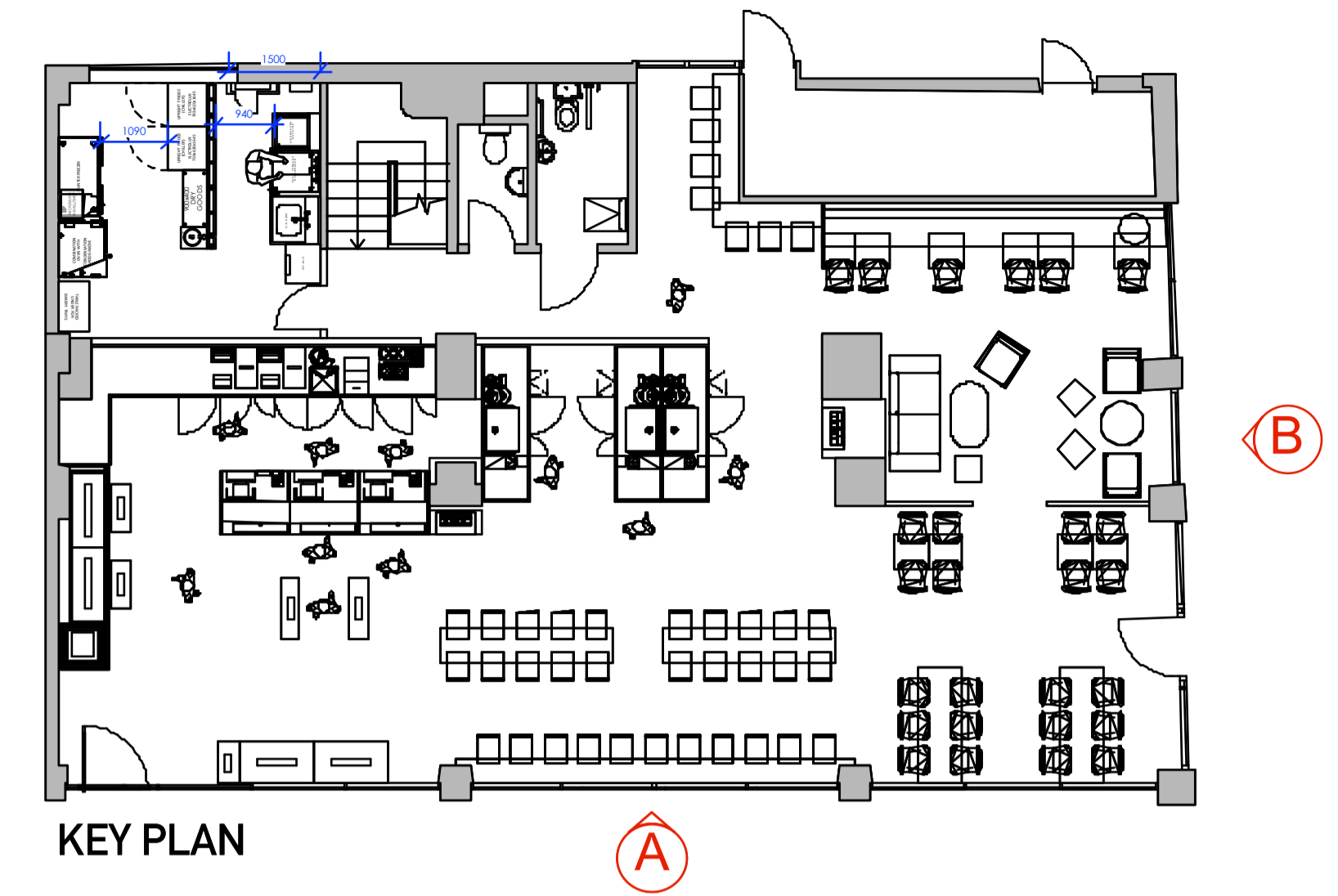


FASCIA SIGNAGE DETAIL

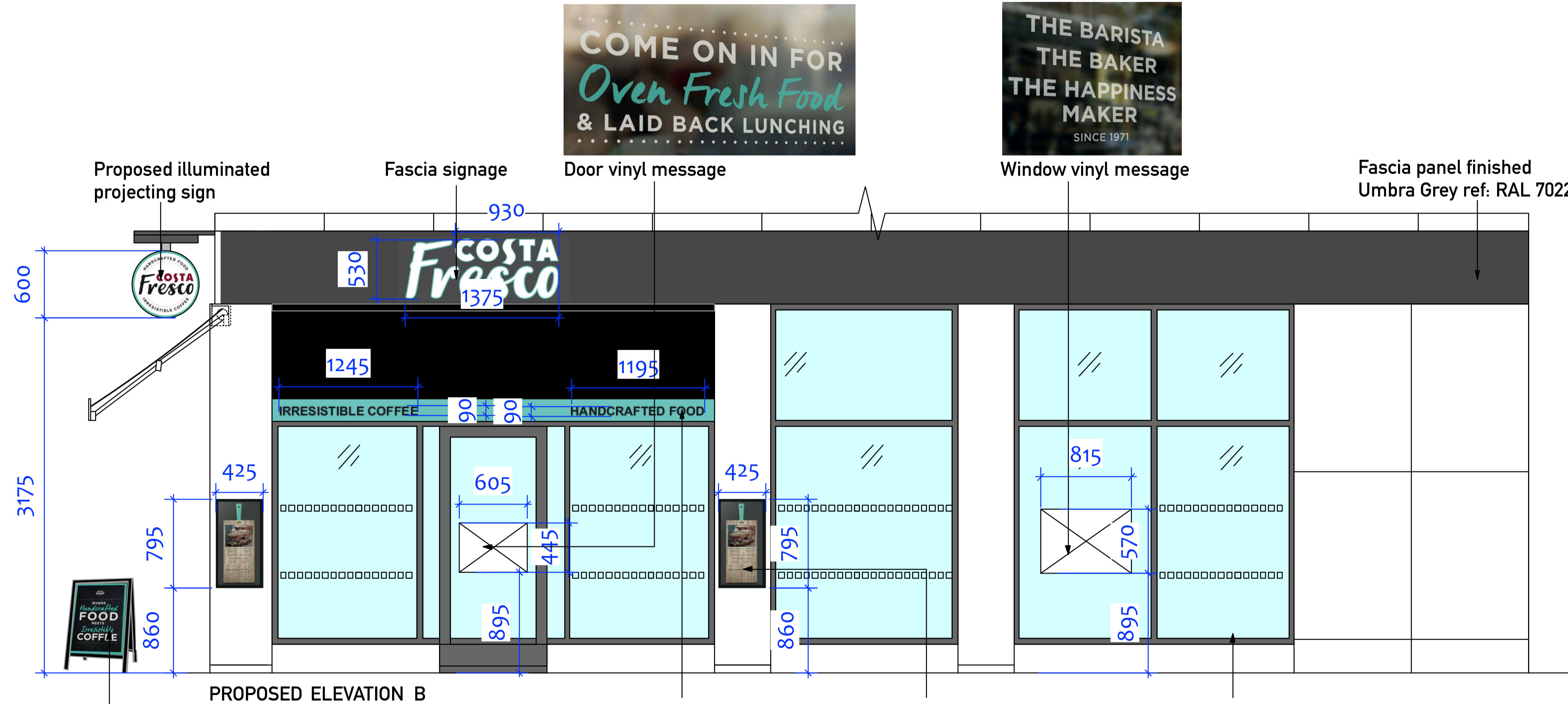
Built up aluminum rim & return letters with opal acrylic letter faces to be internally illuminated with low voltage L.E.D's. Rim & returns to be finished Teal ref: Pantone 7472



PROJECTING SIGN DETAIL



KEY PLAN



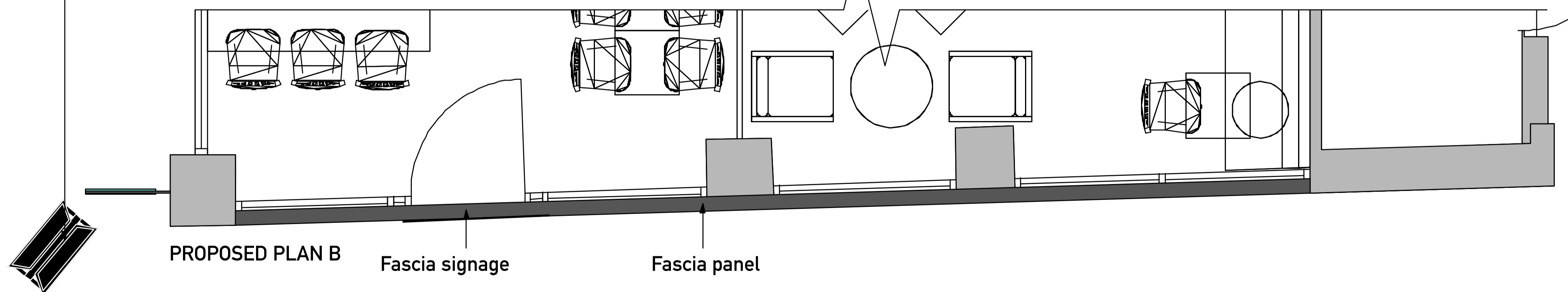
PROPOSED ELEVATION B

Proposed A Board. Exact dimensions & specifications TBC

Black awning with Teal valance & black lettering

Menuboard display

Decorate existing shopfront Umbra Grey



PROPOSED PLAN B

Fascia signage

Fascia panel