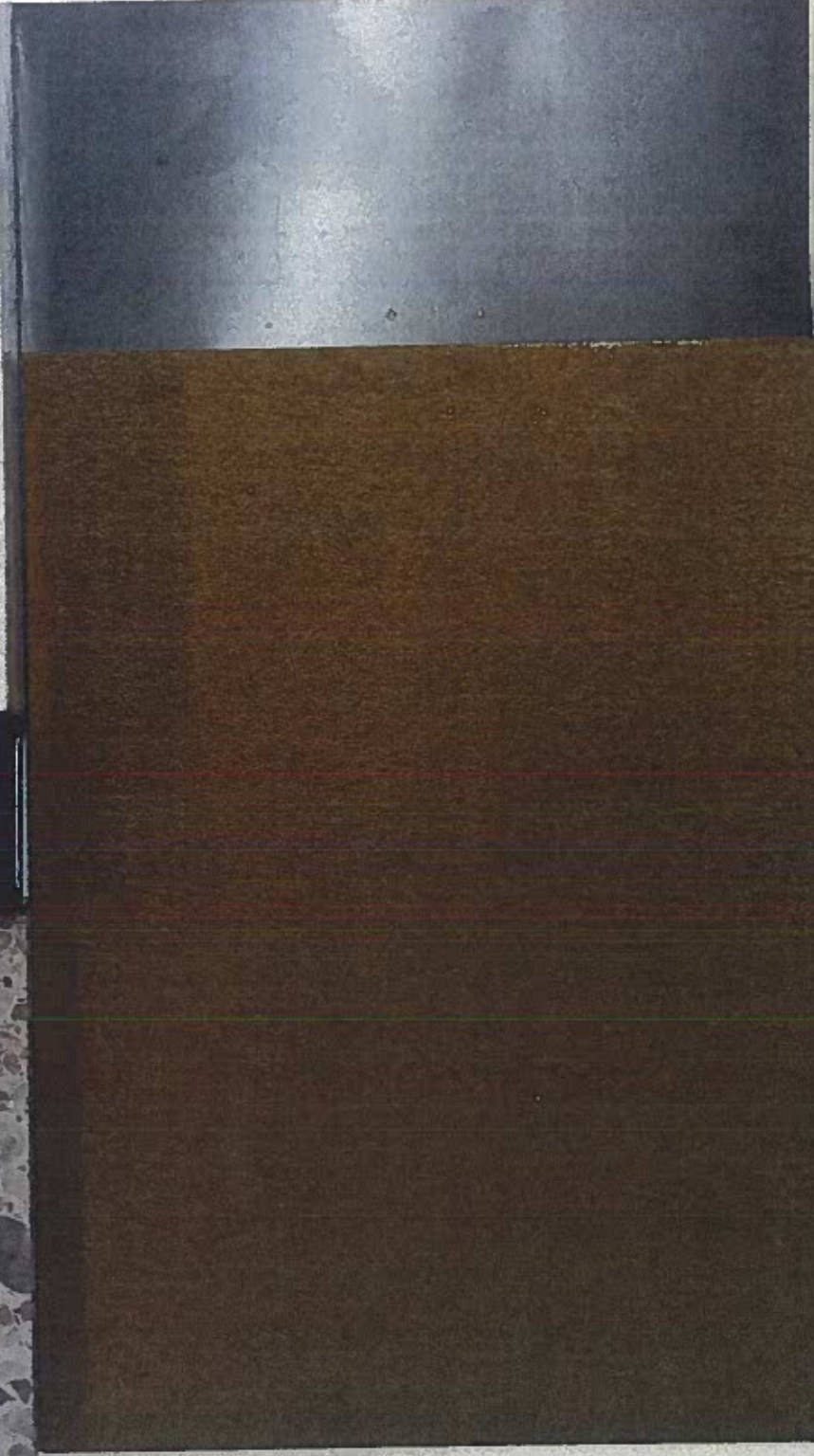
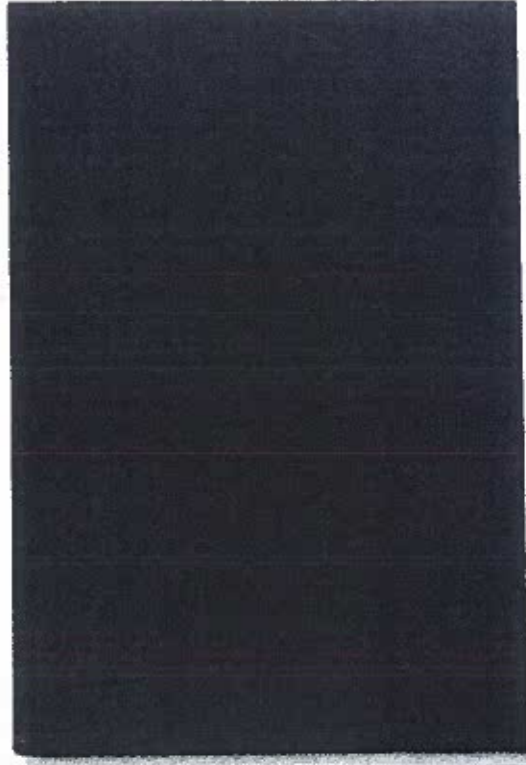


4 PANCRAS SQUARE - SAMPLE BOARD



Eric Perry Architects
Exterior Finish Material Key

1	Black, 4.5mm solid with Polyurethane Primer Coat RAL 9010 gloss (20%)
2	Ground floor area with Aluclad panels, matching finish, with door panels, 1mm Aluclad/Carbon fibre
3	Private garden, with decking, 4 mm PVC, 100% slip resistant & drainage, RAL 9010 gloss (20%)
4	Window frames, 100% Aluclad, RAL 9010 gloss (20%)
5	Steel Deck White painted concrete
6	Extruder Weathering steel
7	Metal cladding: Polyurethane Primer Coat, RAL 9010 matt (20%)

Eric Perry Architects



BUILDING B5
4 PANCRAS SQ.

EXOSKELETON -
WEATHERING STEEL.

BRISE SOLEIL -
WHITE GLAZED CERAMIC

METAL CLADDING -
PPC RAL 7021 MATT
30%. (curtain walling)

BALCONY + TERRACE
METAL SOFFITS - PPC
RAL 9016 GLOSS 90%.

VITREOUS ENAMEL
HANDRAILS - GROUND
FLOOR RAL 7021 -
BALCONIES / TERRACES
RAL 9016 GLOSS 90%.

GROUND FLOOR METAL
SOFFT - ALU COIL PANEL
SPARKLING BLACK FINISH

PRECAST PANELS, WALL
CLADDING & FLOOR
PAVING - TERRAZZO /
CEMENT MARBLE

