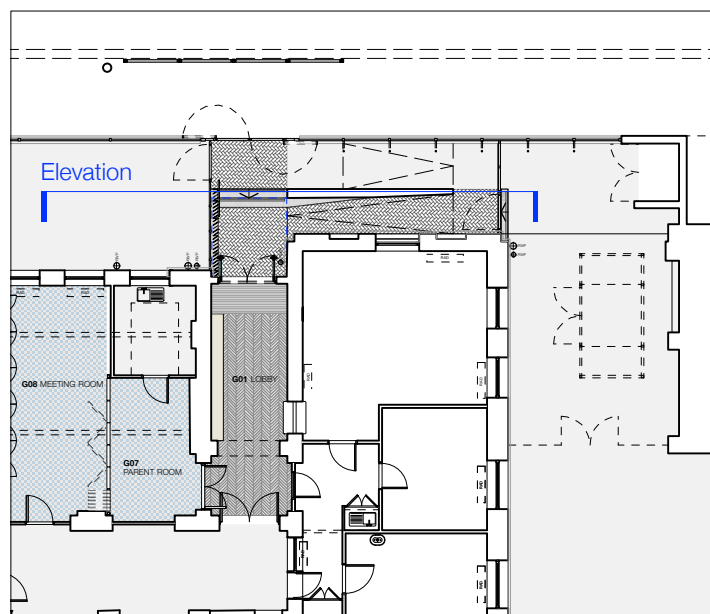




Rhyl Primary School  
 Job  
 For Planning Approval  
 status



- 1 Aluminium clad cantilevered canopy with integrated downlighting and stainless steel lettering
- 2 Individual wall-mounted stainless steel letters.
- 3 Timber framed glazed doors with bespoke manifestation
- 4 PPC Rainwater pipe
- 5 Concrete ramp kerb wall and steps with textured/patterned finish. Brick finish to surface of ramp
- 6 Painted steel fin balustrade.
- 7 Painted steel fence to match existing
- 8 New step
- 9 CCTV camera relocated
- 10 Painted steel handrail
- 11 Stainless steel signage

All dimensions to be checked on site

rev	notes	rev
-	06.02.15	planning issue
A	26.05.15	planning rev A
B	20.07.15	planning rev B
C	11.09.15	planning rev C
D	14.10.15	planning rev D

North Elevation  
 Proposed

title

1403\_P\_1302  
 drawing number

