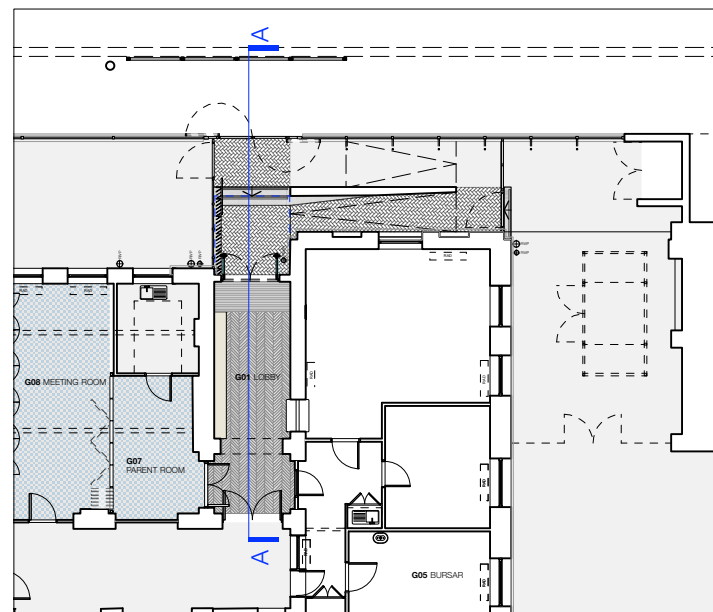
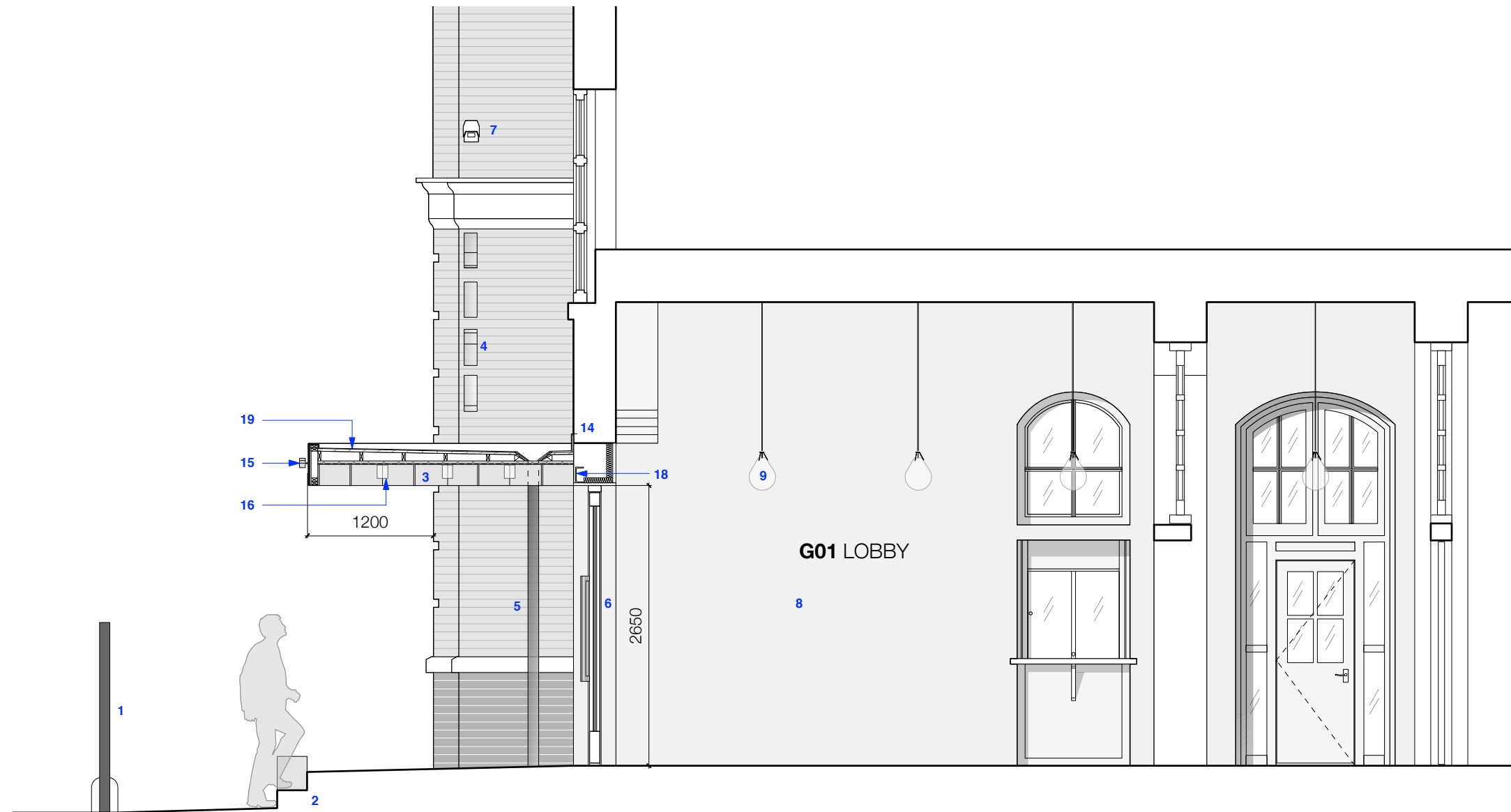




Rhyl Primary School
 Job
 For Planning Approval
 status



- 1 Existing railings to front of school retained
- 2 New steps and ramp
- 3 New cantilevering entrance canopy with exposed painted dia-grid steel soffit structure
- 4 Individual wall-mounted stainless steel letters.
- 5 PPC Rainwater pipe
- 6 New entrance doors
- 7 CCTV position relocated
- 8 Internal walls painted
- 9 New internal pendant lights
- 10 -
- 11 -
- 12 -
- 13 -
- 14 Flashing chased into existing brickwork
- 15 Stainless steel lettering
- 16 Downlighters
- 17 Single layer polymeric roof covering
- 18 New steel with fire rated enclosure

All dimensions to be checked on site

- notes**
- 06.02.15 planning issue
 - 26.05.15 planning rev A
 - 20.07.15 planning rev B
 - 11.09.15 planning rev C
 - 14.10.15 planning rev D
- rev**

Section AA
 Proposed

title

1403_P_1202
drawing number

