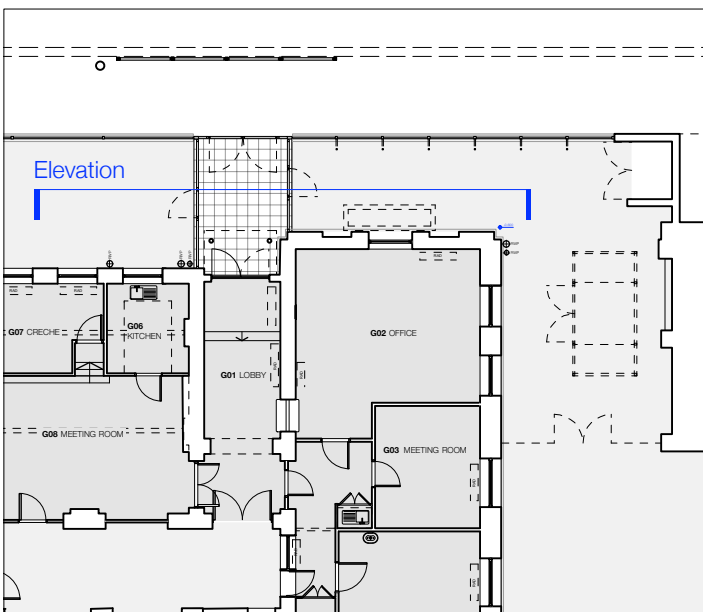
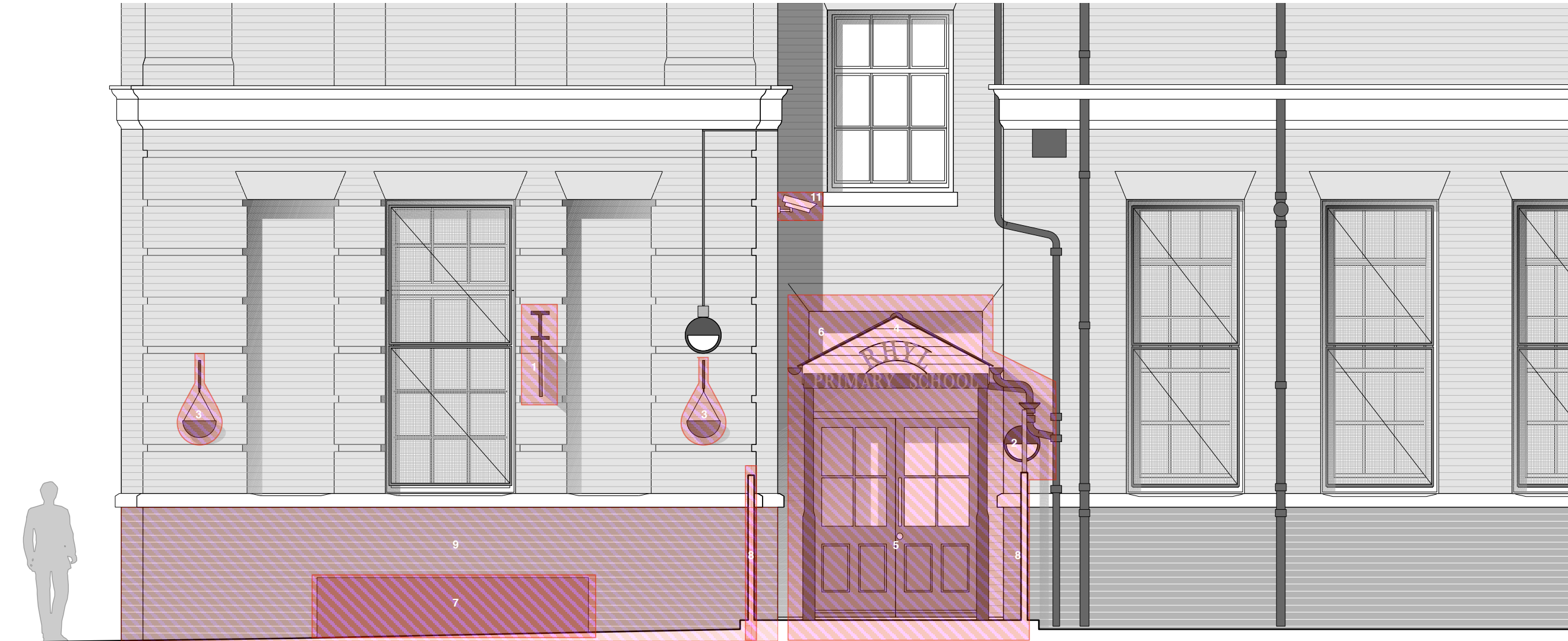




Rhyl Primary School  
 Job  
 For Planning Approval  
 status



- REMOVE THE FOLLOWING -
- 1 School sign
  - 2 External light + cabling
  - 3 Hanging baskets
  - 4 Pitched roof entrance canopy and all associated structural supports, rainwater goods
  - 5 Existing doors
  - 6 Timber overpanel
  - 7 Planter
  - 8 Fence
  - 9 Green paint to brickwork
- REPOSITION -
- 10 CCTV camera

All dimensions to be checked on site

**notes**

- 06.02.15 planning issue
- A 14.10.15 planning rev A
- rev

North Elevation  
 Demolitions

**title**

1403\_P\_1301  
 drawing number

