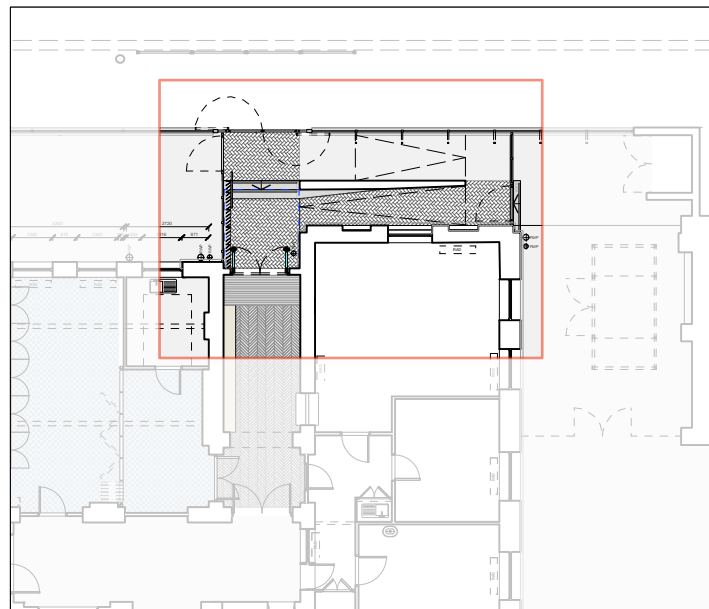
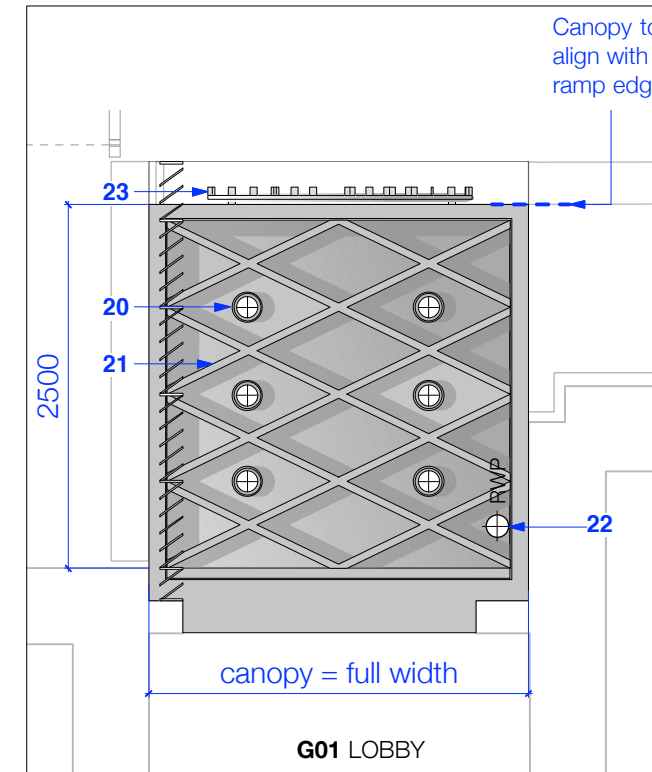


1.50 Plan of Entrance Area



- Entrance Security Buzzer (door power assist button)
- Rainwater Pipes
- Indicative Level (note-levels are for guidance only and use lobby as datum +0.00)
- 1** Railings with urn finials and low brick wall
- 2** Railings with low brick wall
- 3** Low concrete support wall for ramp
- 4** Entrance gates - re-configured and re-hung to allow one leaf to swing outwards and one to swing inwards
- 5** Brick finish to ramp. Brick to abutt against existing building.
- 6** Steel 'Fin' Balustrade
- 7** Brick Pavers
- 8** Tarmac (existing)
- 9** Painted steel fence and gate
- 10** New painted steel gate
- 11** Slot drain
- 12** Step for maintenance access / access to bikes (lockable)
- 13** Cantilevering Entrance Canopy (dotted)
- 14** New timber framed glazed doors
- 15** Entrance barrier matting
- 16** Timber parquet flooring
- 17** Timber bench
- 18** Painted steel handrail
- 19** Concrete steps with integrated rubberised nosing strips



1.50 Reflected Ceiling Plan of Canopy

- 20** Downlighters
- 21** Painted steel structure
- 22** Rainwater pipe
- 23** Stainless steel lettering



5 Rhyl Street

All dimensions to be checked on site

**notes**

- 06.02.15 planning issue
- A 26.05.15 planning rev A
- B 20.07.15 planning rev B
- C 11.09.15 planning rev C
- rev 14.10.15 planning rev D

GA Entrance  
 title

1403\_P\_1110  
 drawing number

1/50 A/3

