

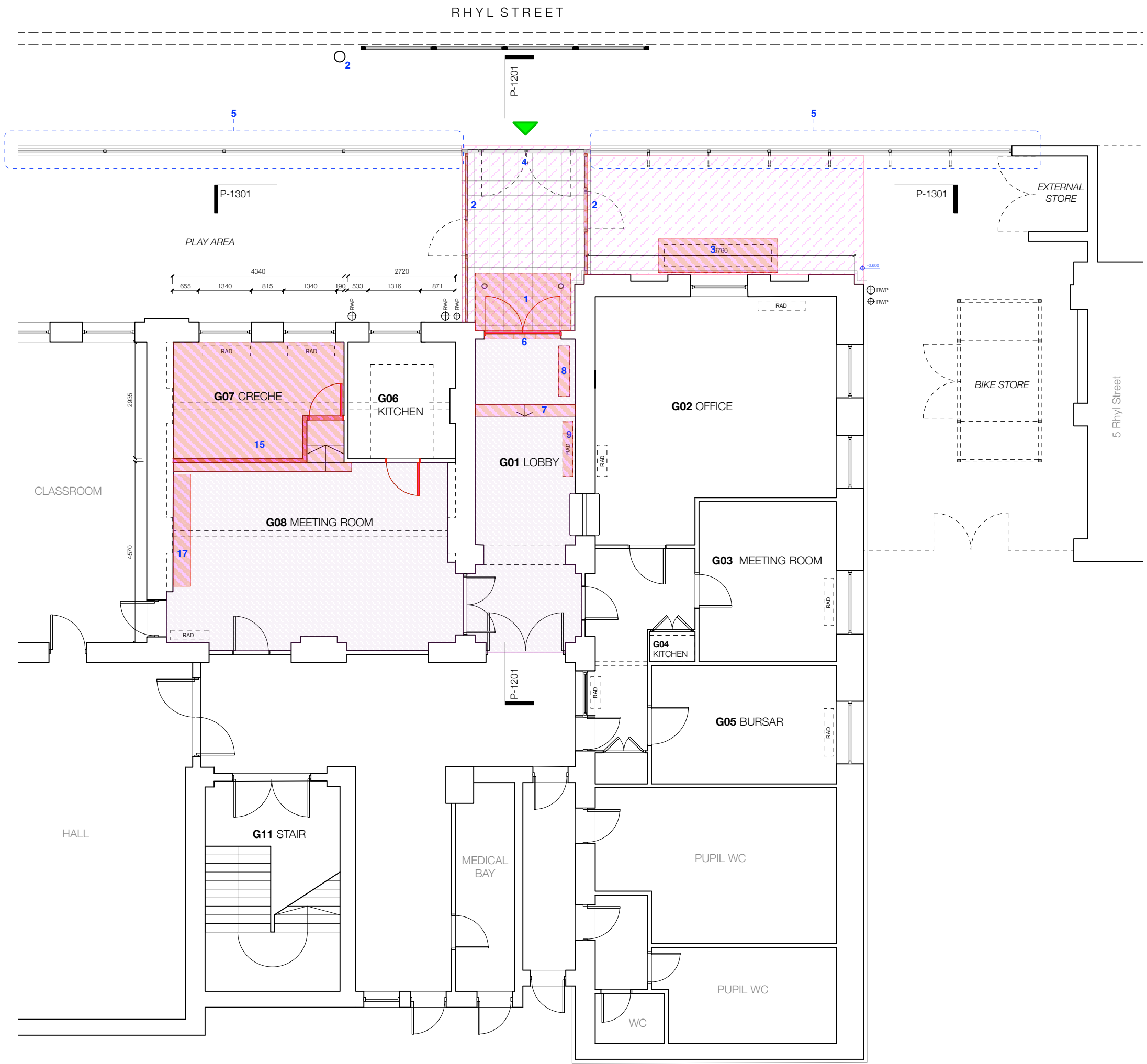


-  Main Entrance
-  Indicative Level
(note-levels use lobby as datum +0.00)
-  Demolition/removal of fixed installations/partitions/fences

-  **AREA 1 External**
- REMOVED
- 1 Pitched roof canopy, supports, gutters and sign
 - 2 Railings leading to entrance door (orientated north/south) removed
 - 3 Planter
 - 4 Front entrance gates to be re-used but reconfigured as per design drawings.
- ALSO REMOVED
- Tarmac and brick pavers
 - Suspended school sign
 - Existing lighting
 - Green wall paint
- NOTE
- 5 Railings on street front mounted to low wall (5 - orientated east/west) to be retained

-  **AREA 2 Internal**
- REMOVED
- 6 Front Entrance doors and fanlight/panel above
 - 7 Steps/Handrail
 - 8 Stair-lift
 - 9 Radiator and TV above
 - 10 -
 - 11 -
 - 12 -
 - 13 -
 - 14 -
 - 15 Raised creche floor removed, including steps and partition walls
 - 16 -
 - 17 Low level units to be removed.
- GENERAL
- All floor coverings removed. Floors made level where necessary
- Blinds removed throughout
- All lighting to be replaced where possible
- Partitions, lay-in grid suspended ceilings and FF+E removed in offices, G02,G03,G04 and adjacent corridor. Where services are mounted on removed partitions, services are to be relocated.
- Fixed furniture in G05 Bursars office to be retained as current



mountain
 3 Greenland Place
 Camden Town London NW1 0AP
 07967 111 660



Rhyll Primary School
 Job
For Planning Approval
 status

All dimensions to be checked on site

Levels are not co-ordinated to Ordnance Survey standards and are indicated for guidance using the lobby floor as a datum +0.00

Refer to schedule of works in design and access statement for more information

Drawing to be read in colour

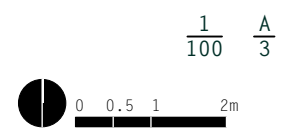
notes

- 06.02.15 first issue
- A 26.05.15 planning revA
- B 20.07.15 planning revB
- C 11.09.15 planning revC

rev

GA Ground Floor
 Plan
 Demolitions
title

1403_P_1101
drawing number



This drawing is copyright of Michael Tite Architecture Ltd. Do not scale off the drawings