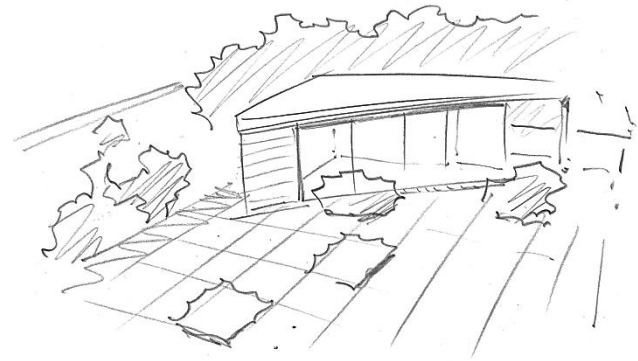


Design and Access Statement



Project:
Garden Shed

Site:
The Garden belonging to
Upper Ground Floor Flat at
43 Belsize Park Gardens
Belsize Park NW3 4JP
Camden, London

Client:
Orna Frommer-Dawson
43 Belsize Park Gardens
Belsize Park NW3 4JP
Camden, London

Architect:
Igor Gottschalk
Giselbertstraße 9
51429 Bergisch Gladbach
Germany

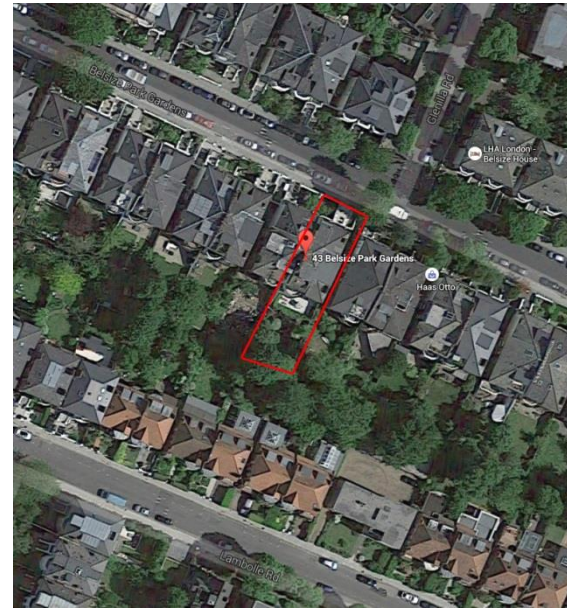
Date:
02.10. 2015

1 Description

This Design and Access Statement supports and describes the application for planning submission for 43 Belsize Park Gardens, as submitted to the London Borough of Camden.

It should be read in conjunction with the formal planning application, submitted to London Borough of Camden in September 2015, together with material submitted in support of this application.

This application is submitted for the new construction of a freestanding single storey shed in the garden belonging to Upper Ground Floor Flat at 43 Belsize Park Gardens.



Aerial view and location plan



2 Construction

The shed will be situated in the garden.

It will be used as a storage facility to house tools and materials for gardening. There is also a small area for occasional hobby work.

The proposal is not for a living space. There are no toilet or washing facilities.

The shed will be constructed using prefabricated timber frame parts and windows.

3 Access

There are no access-related issues in the proposed shed.

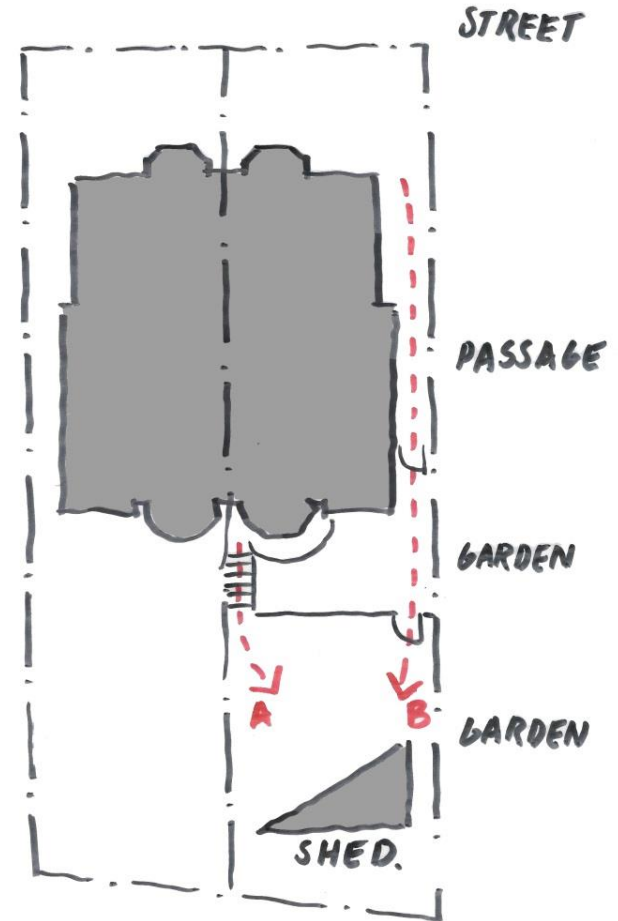
Parking places are not affected.

The shed will be situated in a private garden that cannot be reached by pedestrians off the sidewalk.

Access (on foot) occurs via two possible routes:

A – Through the Upper Ground Floor Flat via a staircase

B - Via passage parallel to the main building



Access diagram

4 Materials

We are proposing to use the following materials:

- Window frames stained timber
- External cladding stained timber
- Roof asphalt roofing



Visualisation of shed in context



Stained wood sample