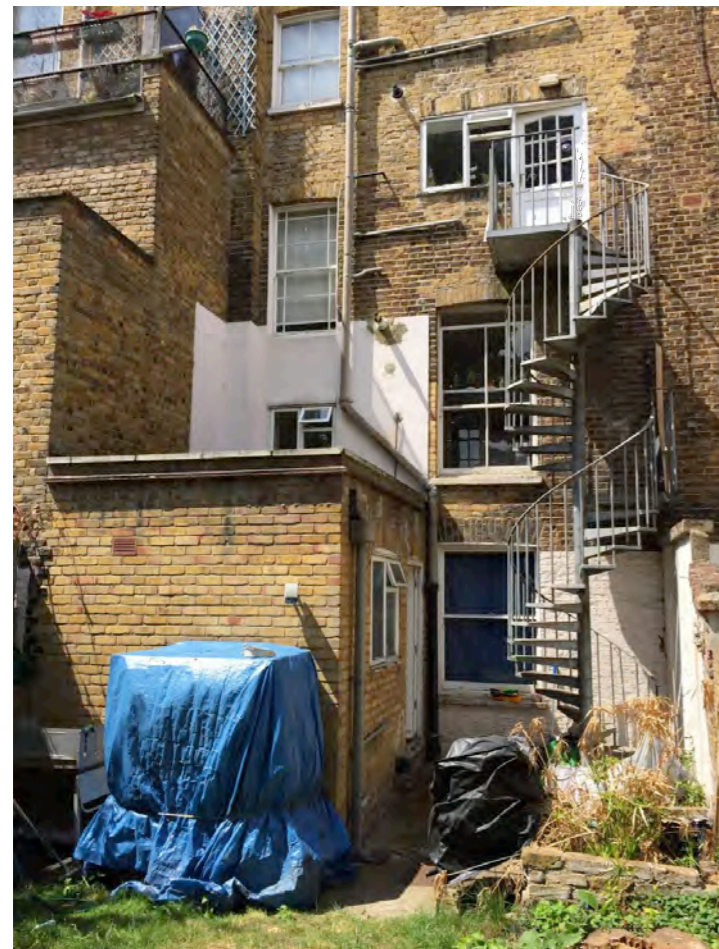
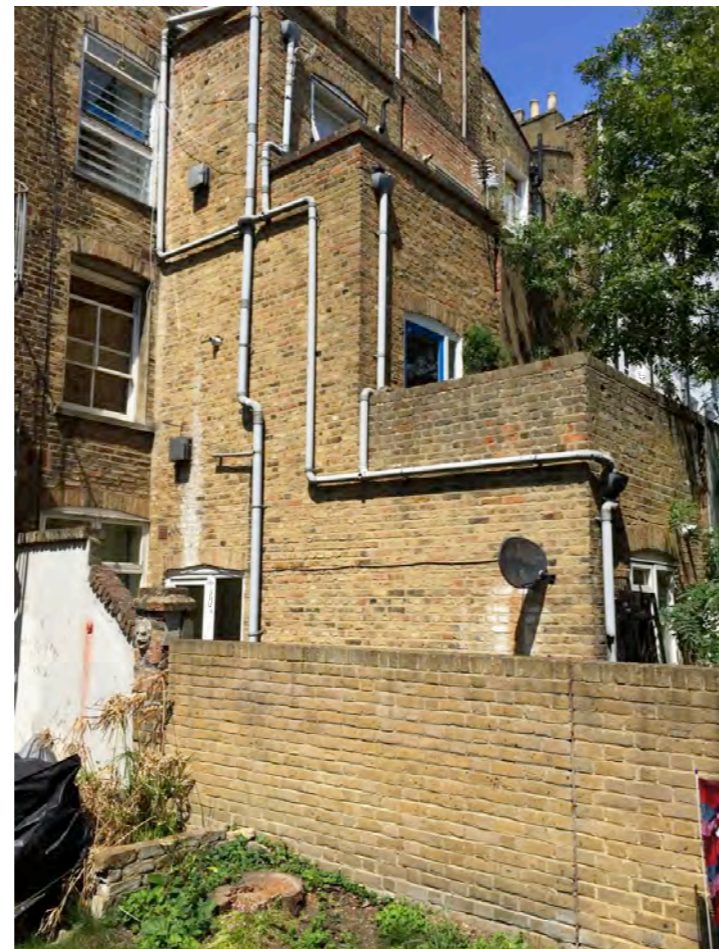


Panoramic view of rear of No 31 Leighton Grove with adjoining owners No's 32 (left), 30 (right) and 29 (far right).



View of rear of No 31 Leighton Grove from rear garden with 3 story extension at 32 to the left.



View of existing 3 story extension at No. 30 Leighton Grove from rear garden. The identical extension exists at No. 29 Leighton Grove.



Bird's eye view from North.

No 31 Leighton Grove



Bird's eye view from South.

SK16 EXISTING PHOTOS

DWG NO. : SK16
 REV : -
 SCALE : NTS
 STATUS : PRELIMINARY
 DATE : 03.07.15
 BY : AB

31 LEIGHTON GROVE NW5 2QP

AY Architects
 Studio 23, 25-27 Bickerton Road, London N19 5JT, UK
 [t] +44(0)20 7272 8899 [e] info@ayarchitects.com