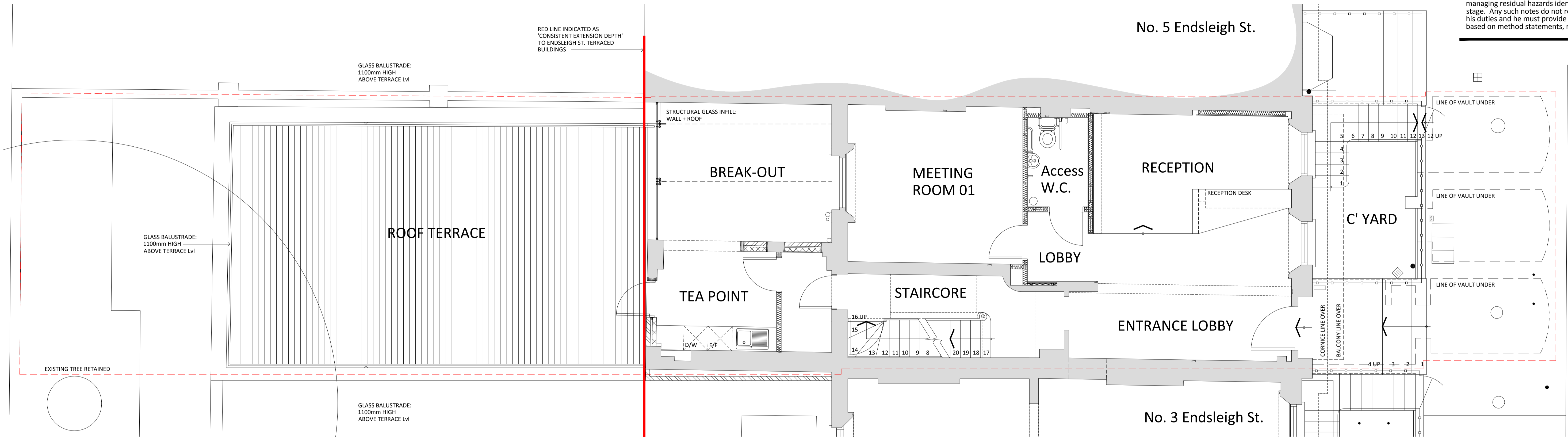
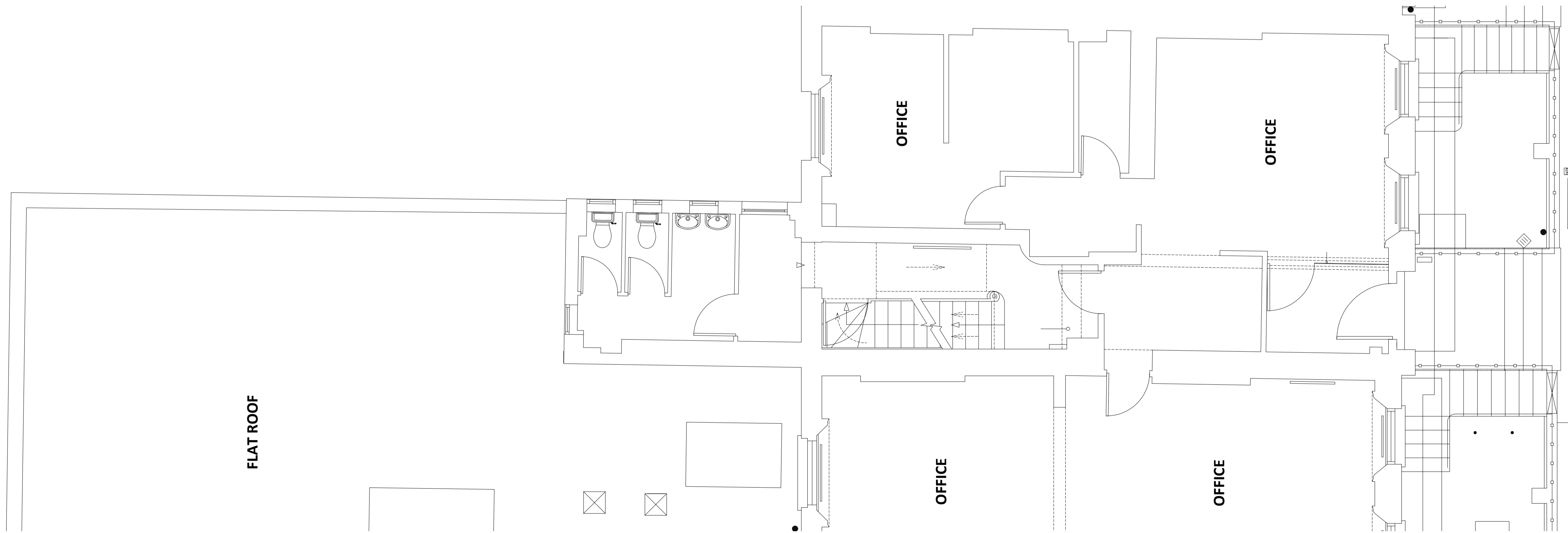


Notes:
 © Rio Architects Ltd. 2015.
 This drawing is copyright and must not be reproduced or disclosed to third parties without the prior written consent of Rio Architects Ltd.
 Do not scale this drawing. Responsibility is not accepted by Rio Architects Ltd for errors made by others during the printing or scaling of this drawing. Use only written dimensions. It is the contractor's responsibility to verify all dimensions before commencing any work. Any discrepancies are to be notified in writing to Rio Architects Ltd immediately.
 This drawing is to be read in conjunction with all other relevant project drawings, specifications and schedules prepared by Rio Architects Ltd and any other relevant consultants, specialists or subcontractors.
 CDM notes are provided to assist the contractor in managing residual hazards identified during the design stage. Any such notes do not relieve the contractor of his duties and he must provide a safe system of work based on method statements, risk assessments etc.



Proposed Ground Floor Plan



Existing Ground Floor Plan

C	Part Existing Wall retained and Glass Balustrade height lowered to 1100mm height to Planning Authority Comment.	JB	MA	2.10.15
B	Masonry pier omitted, glass panel added; glass balustrade adjusted to inside parapet face-fix.	JB	MA	1.9.15
A	Masonry return added; Lobby to stair added + return wall; retained tree added.	JB	MA	25.08.1
Rev.	Description	Ini.	Ch/k	Date

Rio studio@rioarchitects.com
www.rioarchitects.com
 @rioarchitects

Rio Cardiff
 21a Allensbank Road
 Cardiff CF14 3PN
 +44 (0)29 2025 0066

Rio London
 19 21 Hatton Garden
 London EC1N 8BA
 +44 (0)20 2691 7565

Client:
Endsleigh Street 4 Ltd

Project:
**4 Endsleigh Street
 London**

Drawing status:
INFORMATION

Scale @ A1: 1:50	Scale @ A3: 1:100
Drawn: JB.	Checked: HJ
Date: 17.08.15	Date: 17.08.15

Drawing:
**Proposed - Glass Infill
 Ground Floor Plan**

Job No.:	Drawing No.:	Rev.
Rio 0235	Ask 11	C