



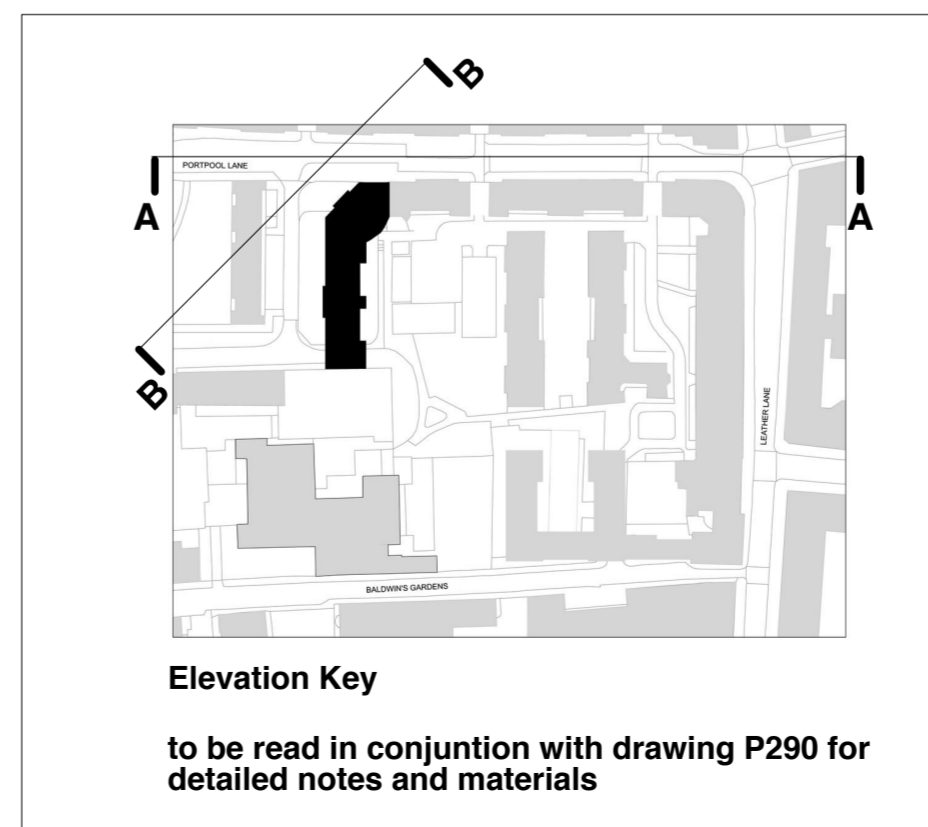
**Proposed Block 1**  
Elevation A - 1:200@A1



**Proposed Block 1**  
Elevation A - 1:100 @A1

**Proposed Block 1**  
Elevation B - 1:100 @A1

# BLOCK 1



2015.08.17	<b>E</b>	Condition 6 re-submission Vent positions moved from Elevation A to Elevation B Brick cornice revised
2015.04.24	<b>D</b>	Condition 6 submission Vents, rainwater pipes and flues added
2014.09.15	<b>C</b>	Relocation of north core bin store to Portpool Lane elevation; window positions to community hall revised; signage position revised and combined with basement grilles; large opening to fifth floor stair revised as stair now terminates at 4th floor.
2014.02.12	<b>B</b>	Storey height increased, mansard roof angle adjusted
2013.02.08	<b>A</b>	Plinth height increased to 2 storeys

**Notes:**

- do not scale from this drawing
- survey indicative only
- proposals are subject to utilities surveys
- drawing to be read in conjunction with relevant consultant's information
- drawing to be read in conjunction with relevant specifications

**Higgins**  
MatthewLloydArchitects LLP

1 The Hangar  
Perseverance Works  
38 Kingstand Road  
London E2 8DD  
T 020 7613 1934  
email: mail@matthewloyd.co.uk  
www.matthewloyd.co.uk

**PLANNING** ©2014

Original Sheet Size **A1**

0 1m 2m 3m 4m 5m

Date: AUG 14 Scale: 1:100@A1 / 1:200@A3 Drawn by: BM

Project: Bourne Estate South for Higgins Construction PLC

Drawing title: BLOCK 1 North & Northwest Elevation

Reference: BE14	Dwg. No: P280	Rev: E
-----------------	---------------	--------