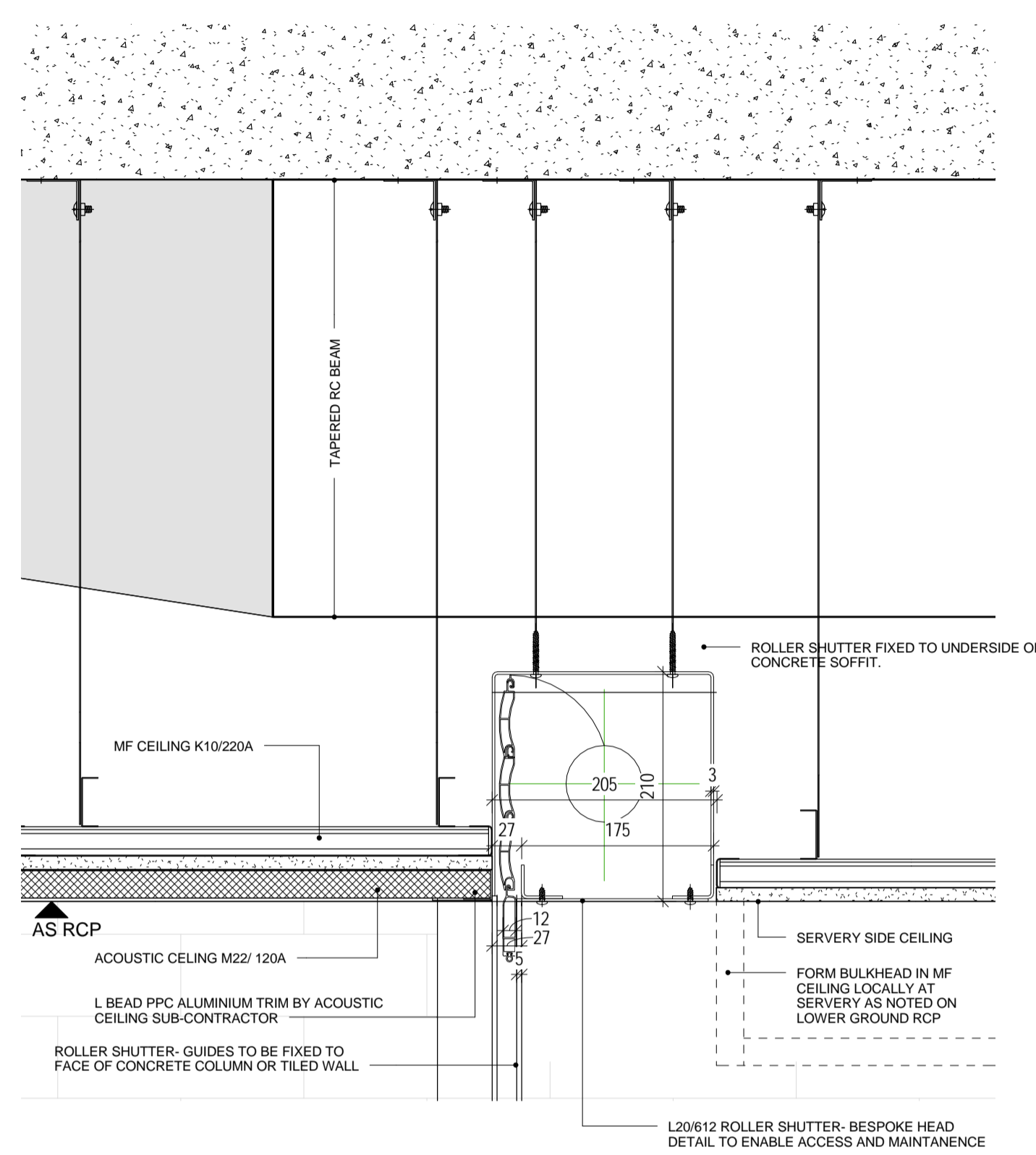


Safety, Health and Environment Information

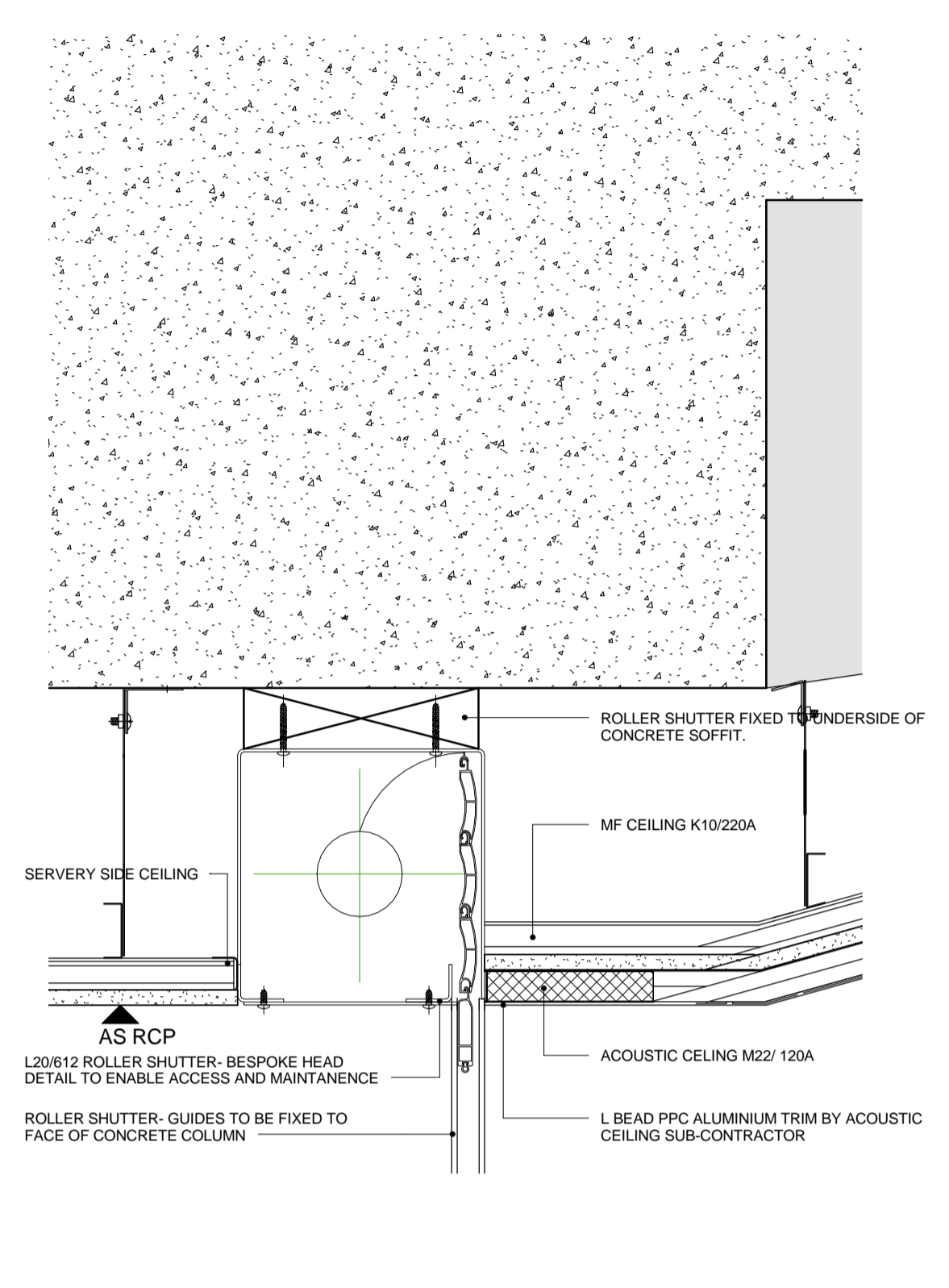
The significant unusual hazards / risks associated with this type of work are noted as:

CONSTRUCTION	
CI	
CII	
OPERATION AND MAINTENANCE	
OI	
OII	
DISMANTLING/DEMOLITION	
DI	
DII	

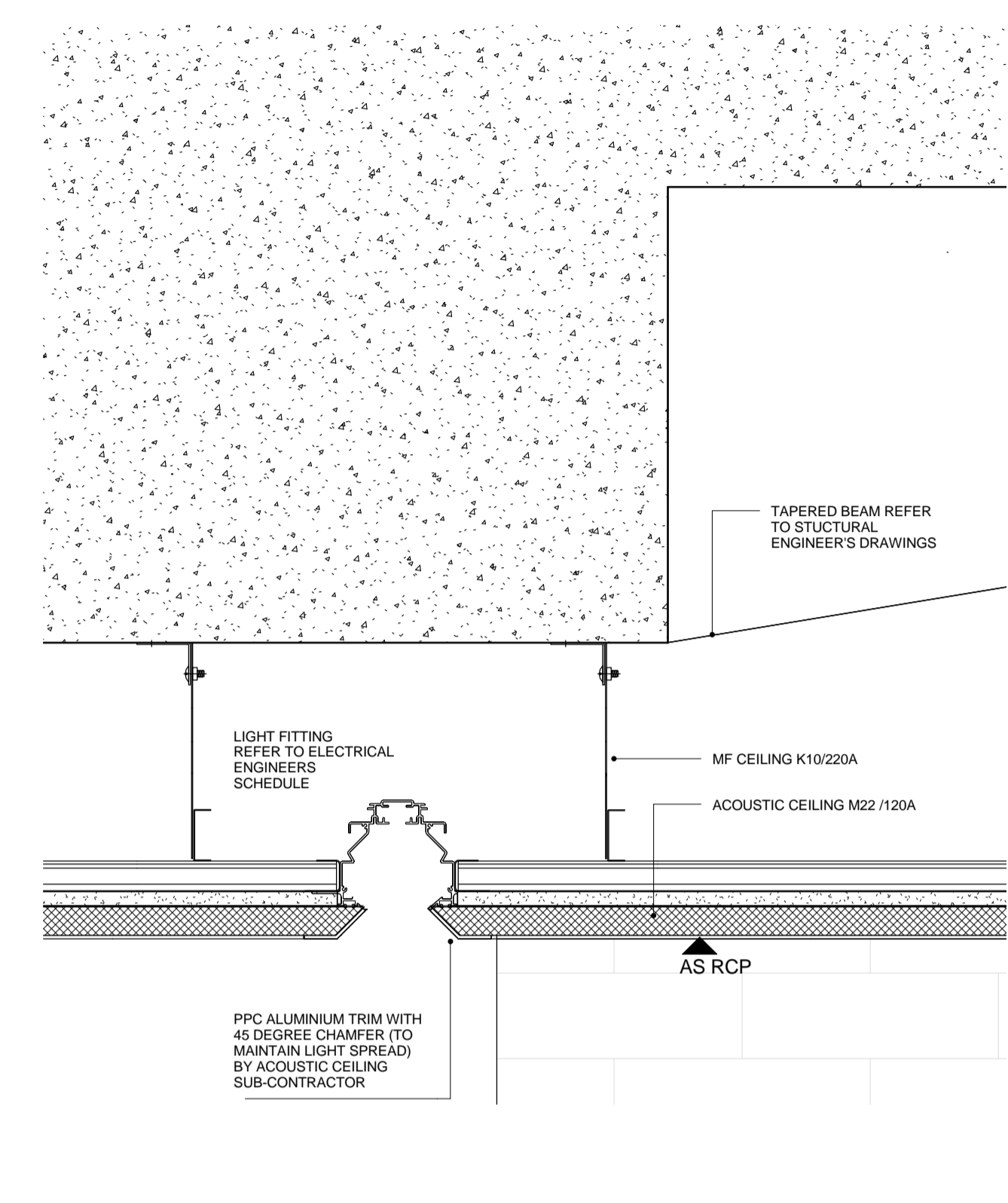
NOTE - TO BE READ IN CONJUNCTION WITH RISK REGISTER



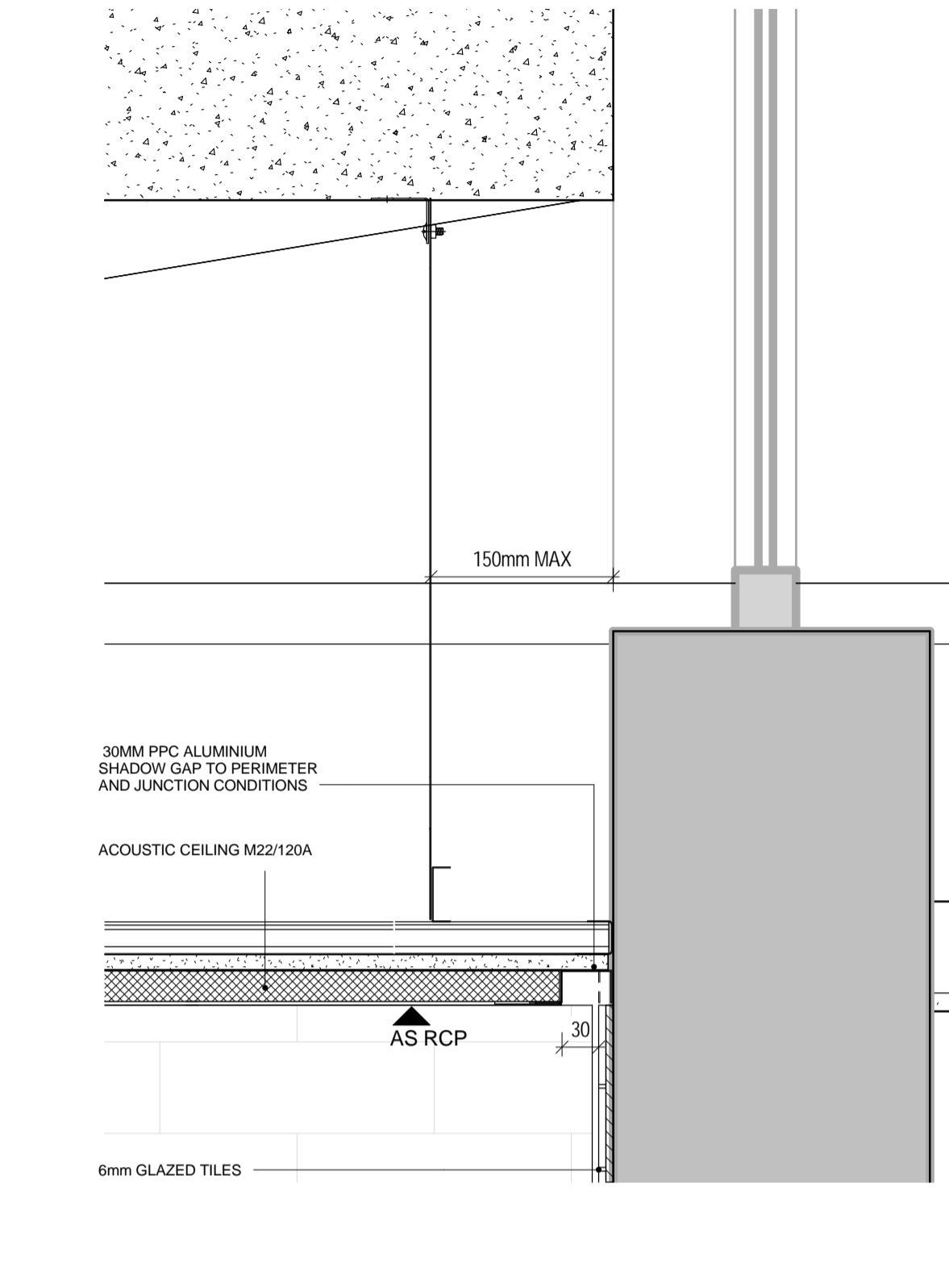
**1** SERVERY SHUTTER  
1:5



**9** SHUTTER HEAD  
1:5

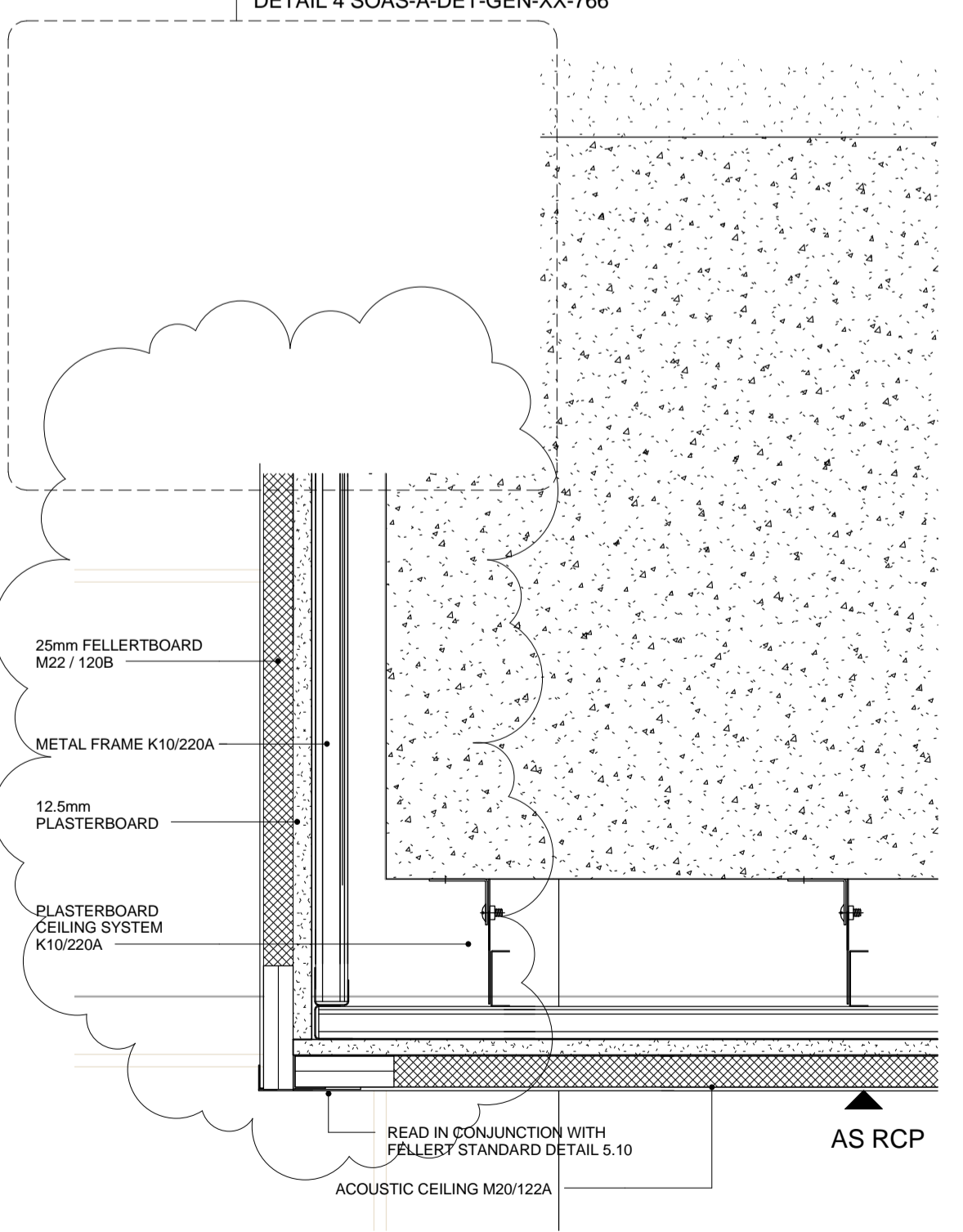


**6** LIGHT FIXTURE  
1:5

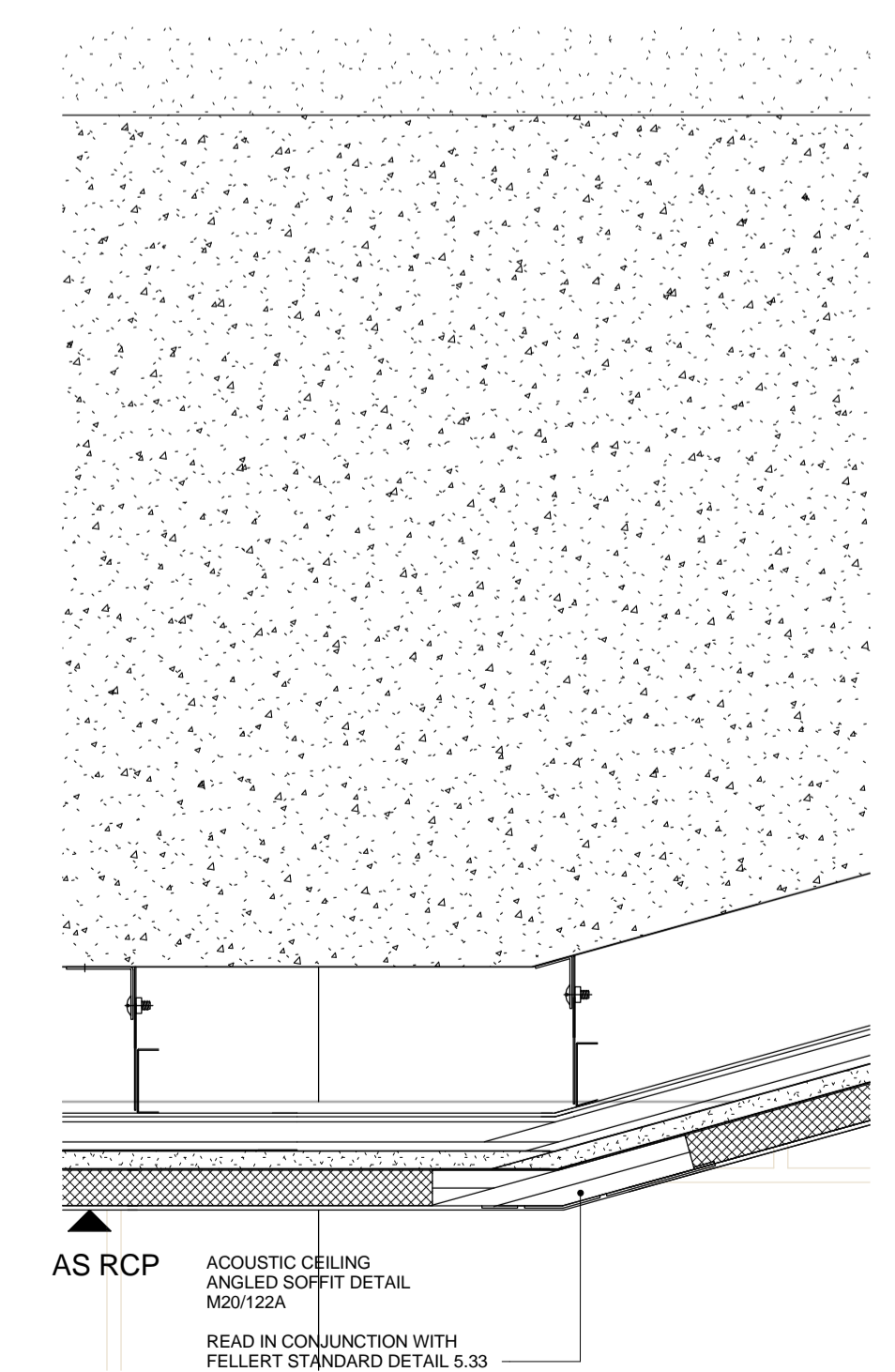


**2** 30mm SHADOW GAP ABUTMENT  
1:5

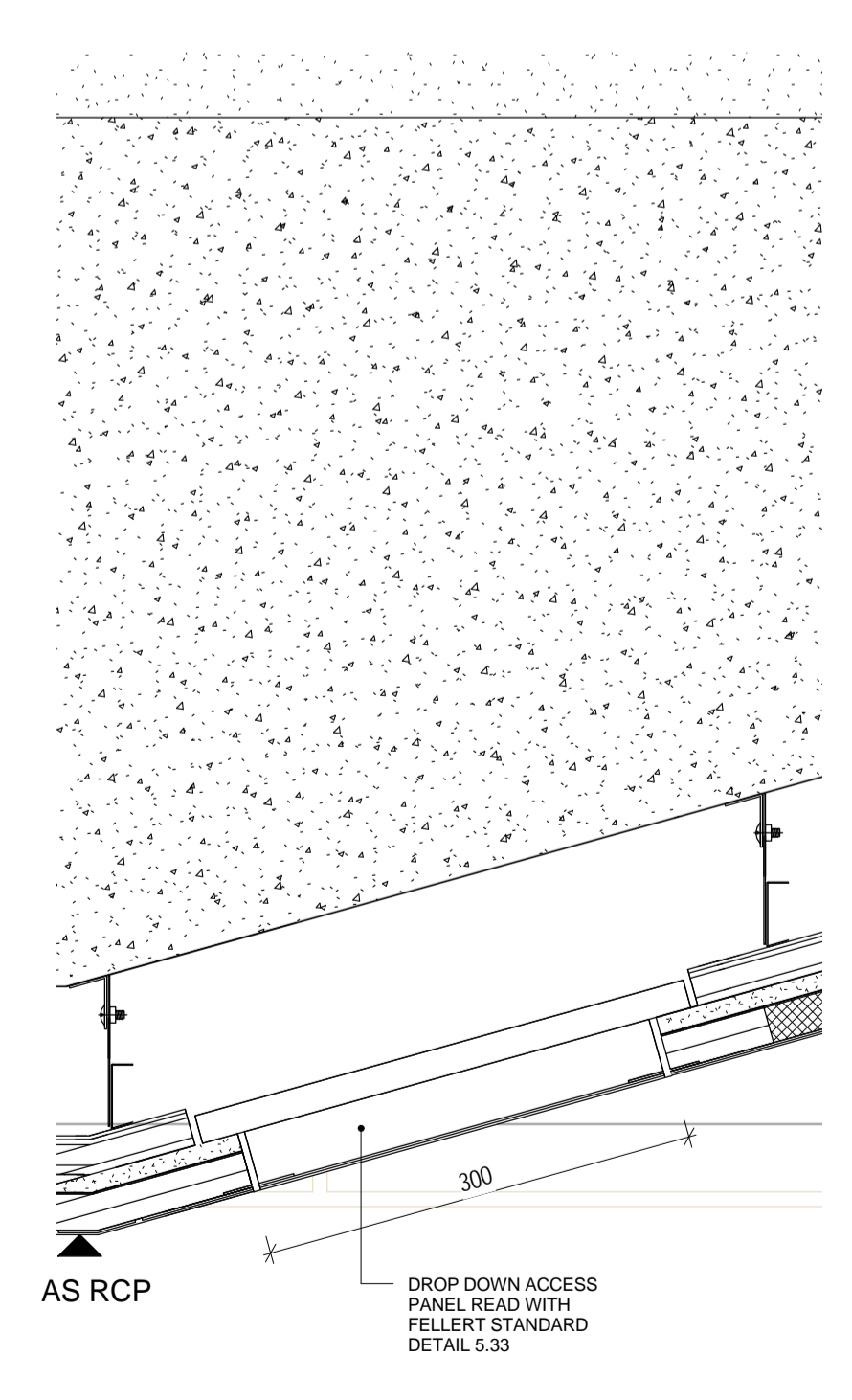
**4**  
685  
FOR DETAIL PLEASE REFER TO  
DETAIL 4 SOAS-A-DET-GEN-XX-766



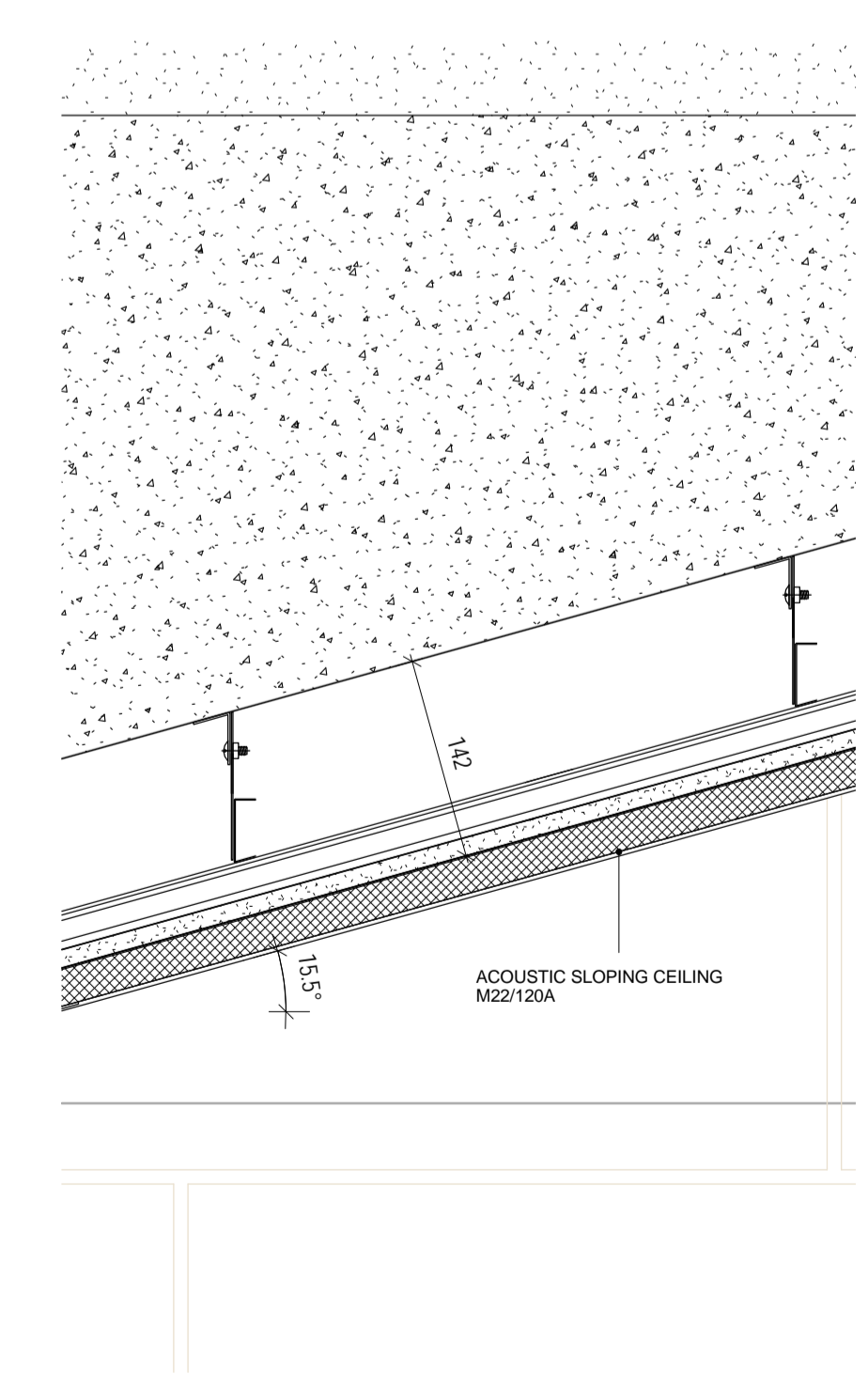
**3** APRON DETAIL  
1:5



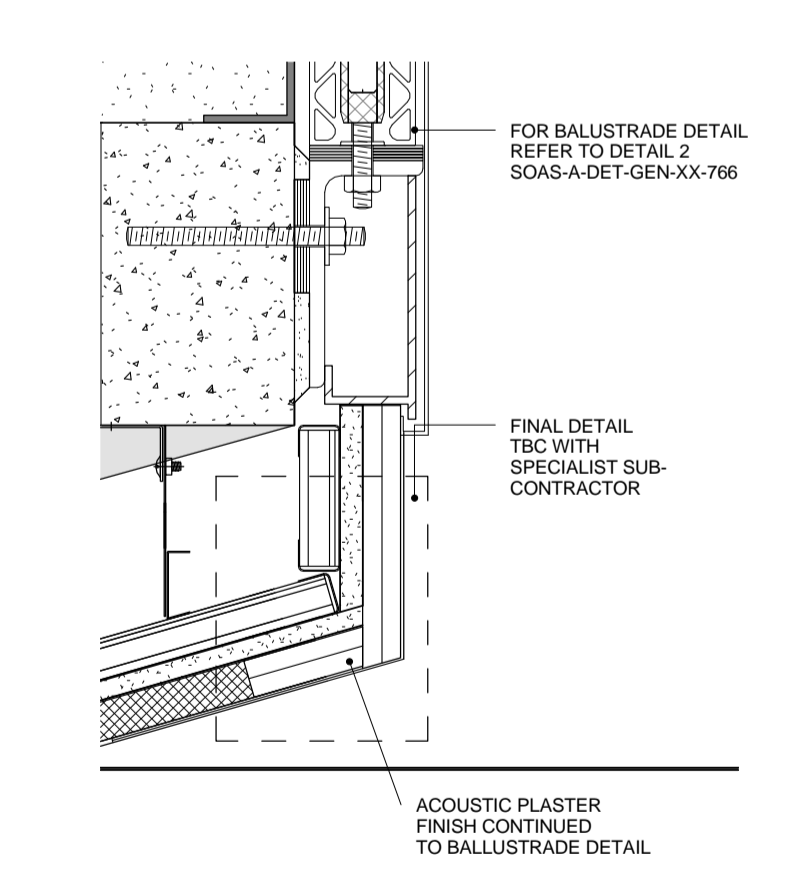
**4** ACOUSTIC CEILING ANGLE DETAIL  
1:5



**7** DROP DOWN ACCESS PANEL  
1:5

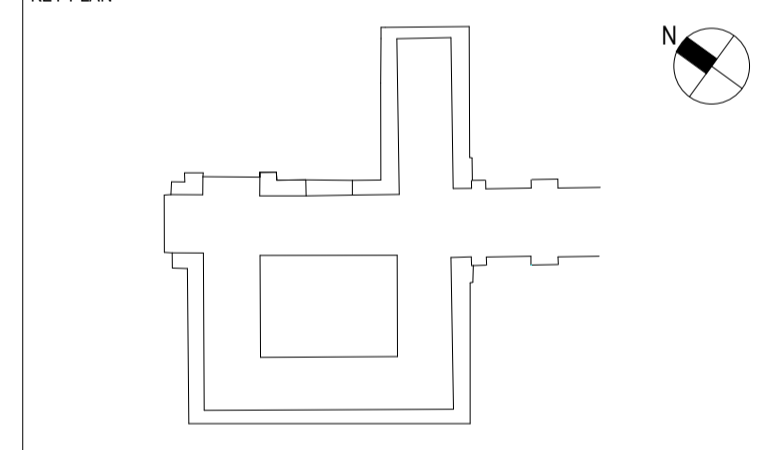


**8** SLOPING SOFFIT DETAIL  
1:5



**5** APRON AT SLOPING SOFFIT  
1:5

REV	DATE	DESCRIPTION	DWN	CHK/APP
4	04.09.15	FELLERT BOARD ADDED TO DETAIL 3 FOLLOWING MEETING WITH WSP	AW	EF/CF
3	30.04.15	AMENDMENT TO DETAIL 1 - BULKHEAD DETAIL AND NOTE ADDED AS HIGHLIGHTED	HB	EF/MD
2	21.11.14	CONSTRUCTION ISSUE: UPDATES TO REFLECT GRAHAM'S COMMENTS PLUS DETAIL 9 ADDED & DETAIL 1 AMENDED	HB	EF/MD
1	15.10.14	CONSTRUCTION ISSUE	HT	EF/LT



PROJECT STATUS: **CONSTRUCTION**



PROJECT TITLE:  
**SOAS INTO SENATE HOUSE  
 MALET STREET  
 LONDON, WC1E 7HU**

DRAWING TITLE:  
**CEILING DETAILS  
 SHEET 4**

PROJECT NO. <b>28731</b>	DRAWN BY <b>BP</b>	DATE <b>15.10.14</b>
	CHK BY <b>EF</b>	DATE <b>15.10.14</b>
	APPD BY <b>LT</b>	DATE <b>15.10.14</b>
PROJECT CODE <b>SOAS - A - DET - GEN - XX - 766</b>	VIEW TYPE	VIEW CAT.
SHEET NO. <b>1 of 2</b>	SCALE <b>1:5</b>	ORIG. SHEET SIZE <b>@ A1</b>
		REV. <b>C 4</b>

INFORMATION HANDLING CLASSIFICATION