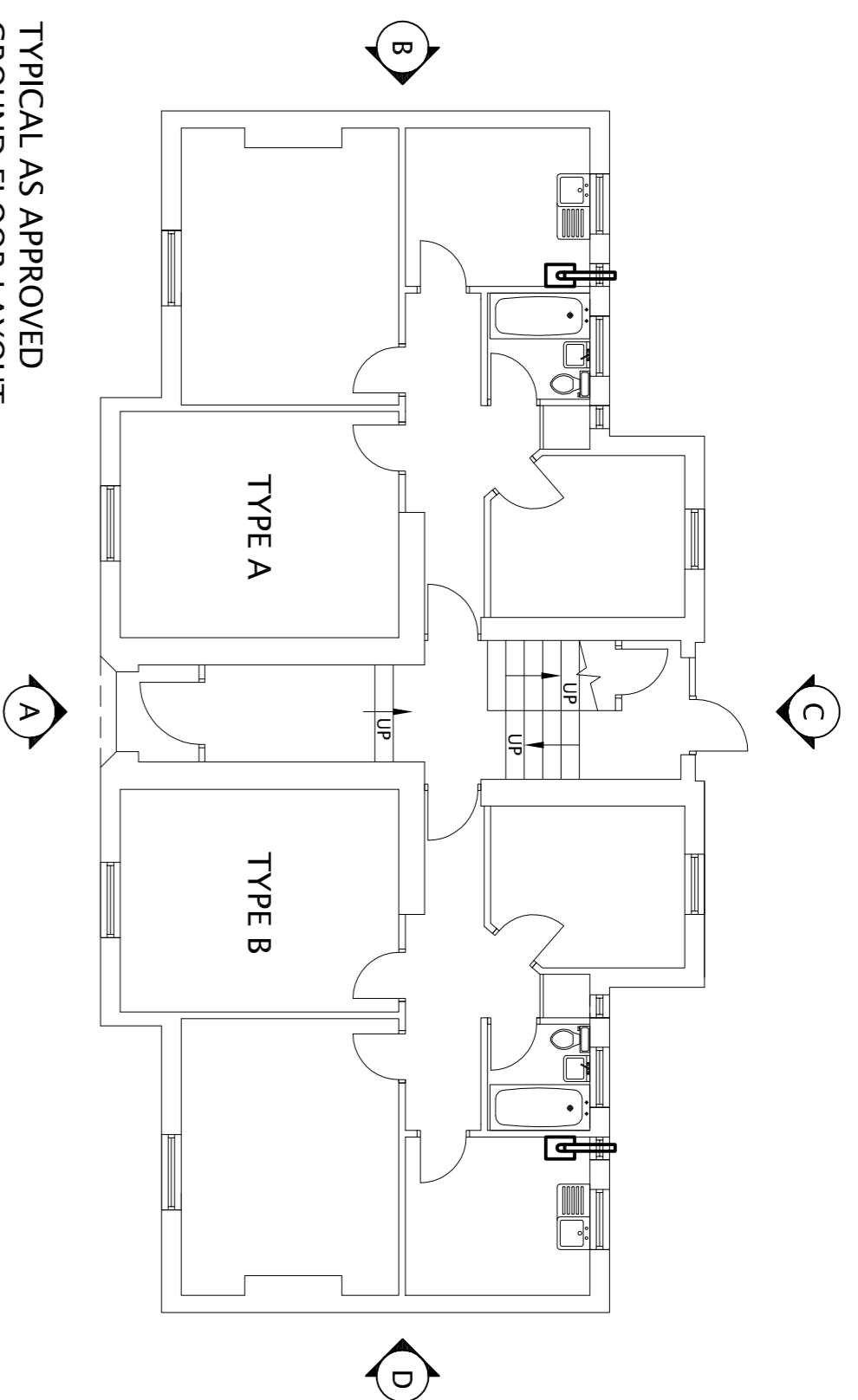
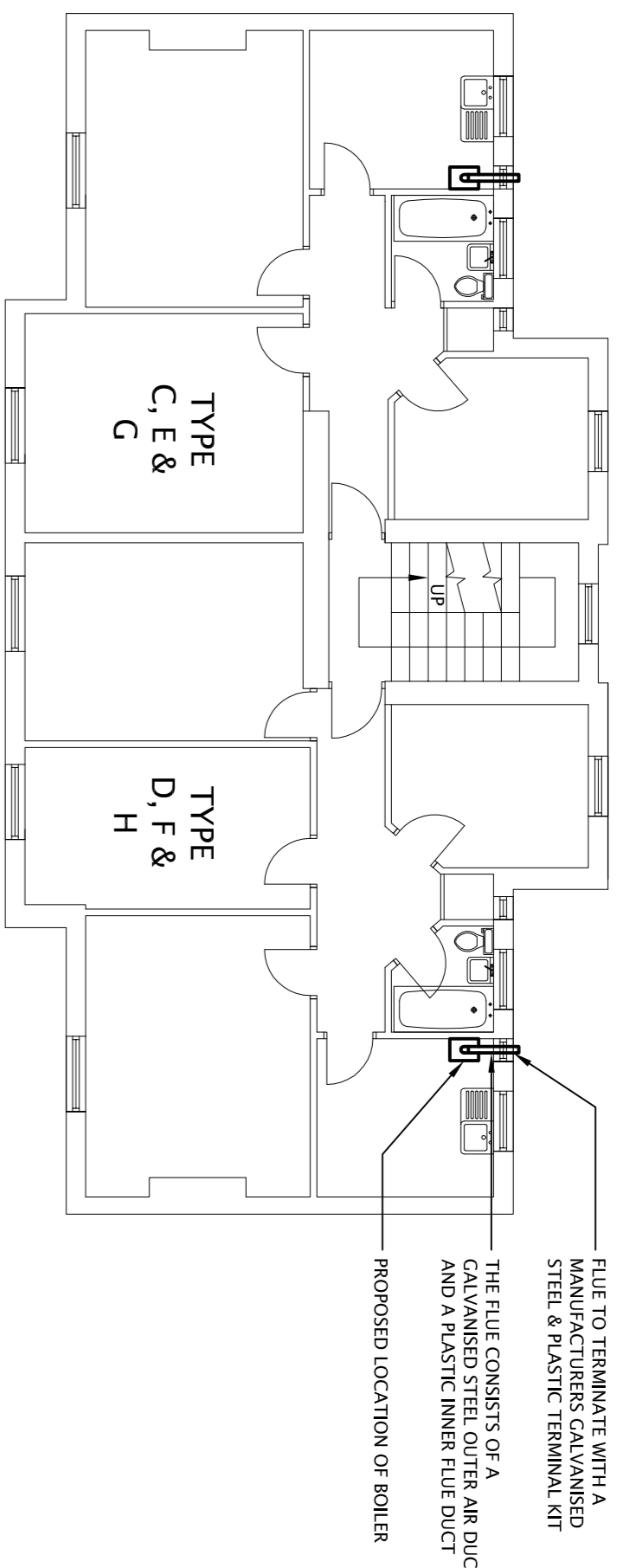


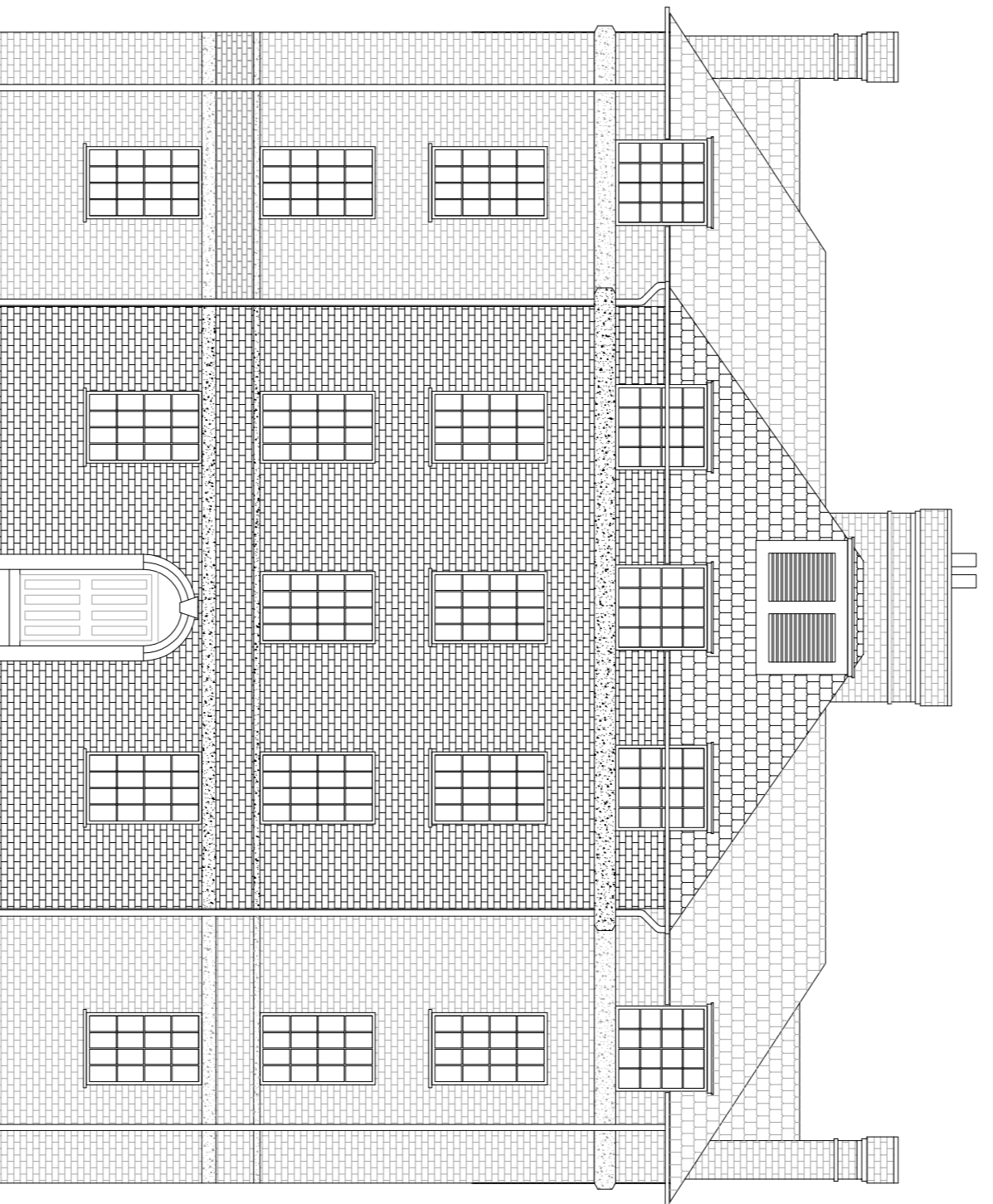
DO NOT SCALE FROM THIS DRAWING



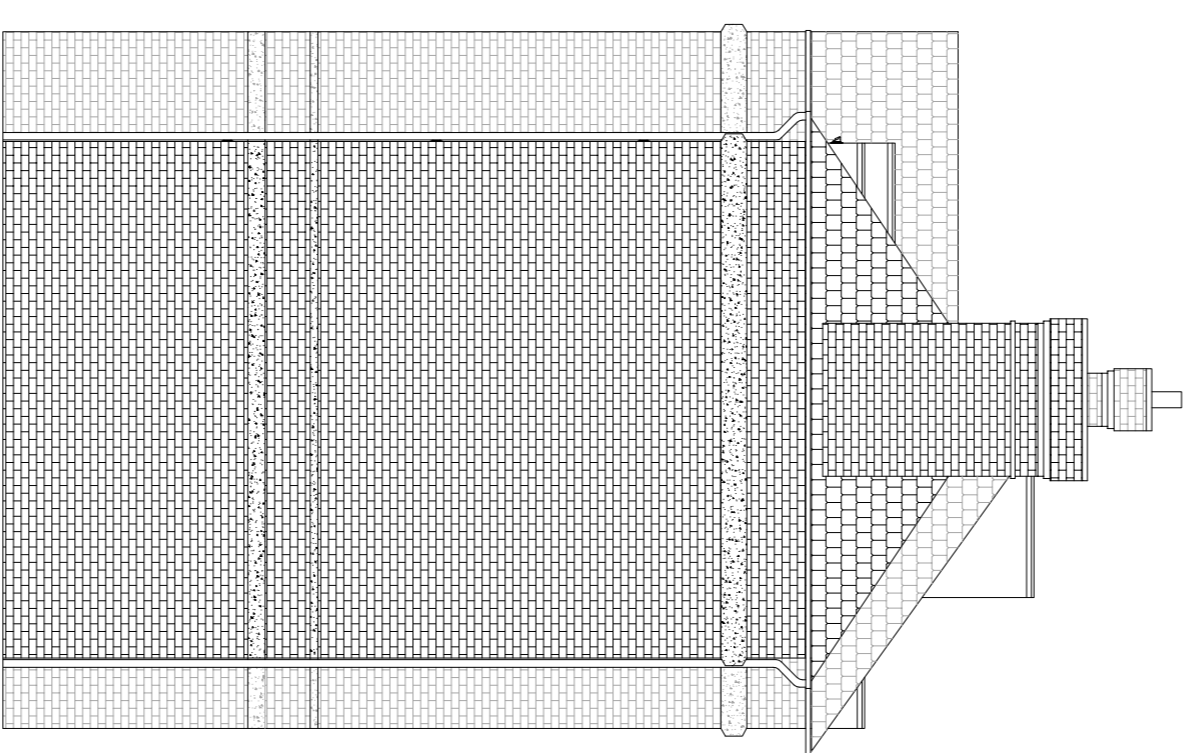
TYPICAL AS APPROVED  
GROUND FLOOR LAYOUT  
SCALE 1:100



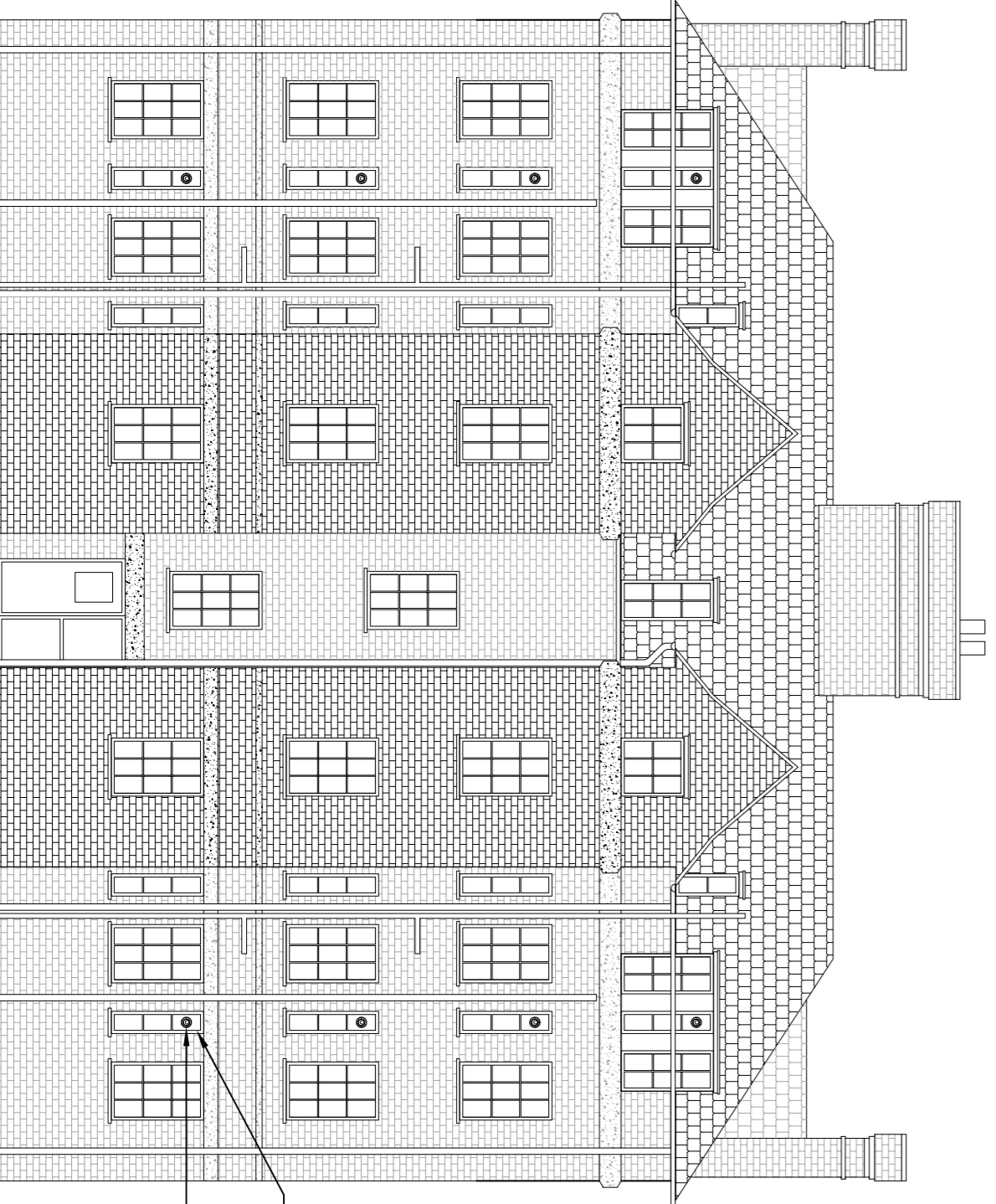
TYPICAL AS APPROVED  
FIRST, SECOND AND  
THIRD FLOOR LAYOUT  
SCALE 1:100



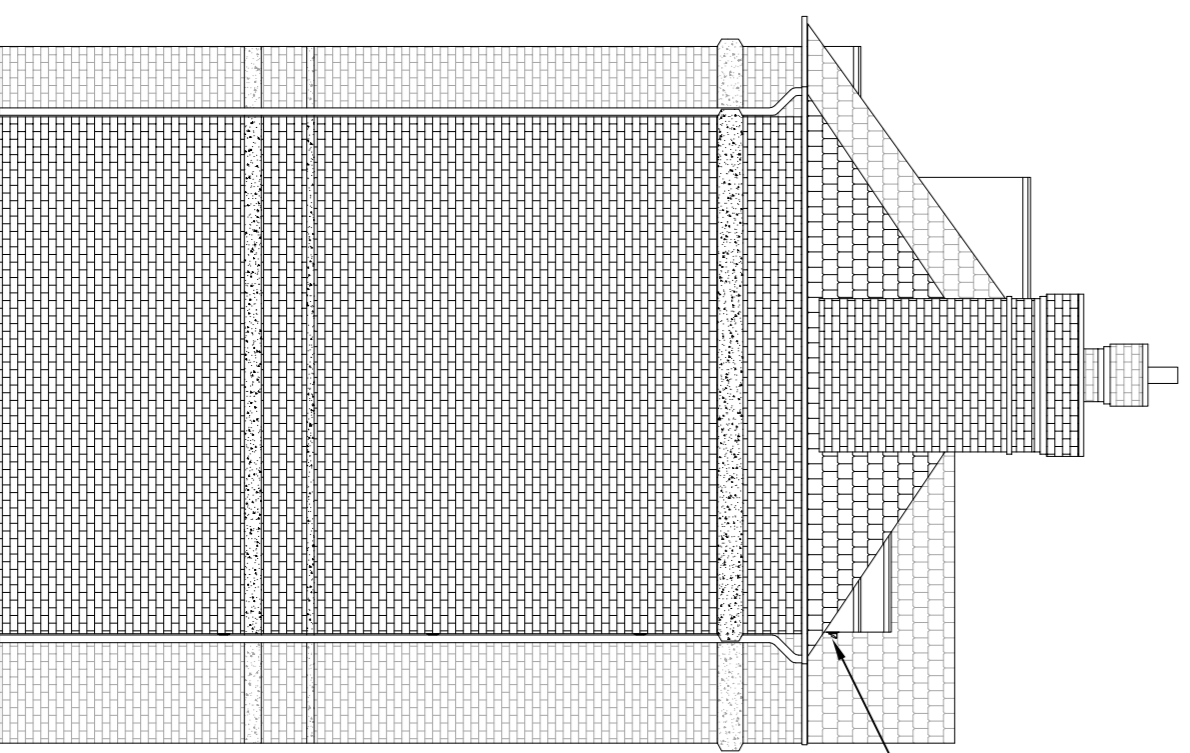
AS APPROVED  
ELEVATION A  
SCALE 1:100



AS APPROVED  
ELEVATION B  
SCALE 1:100



AS APPROVED  
ELEVATION C  
SCALE 1:100



AS APPROVED  
ELEVATION D  
SCALE 1:100

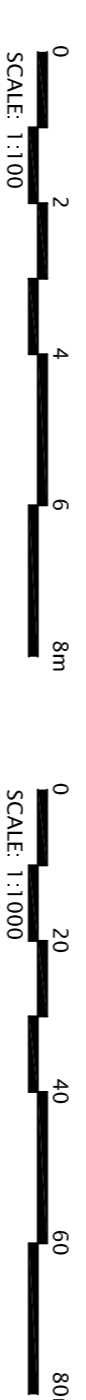
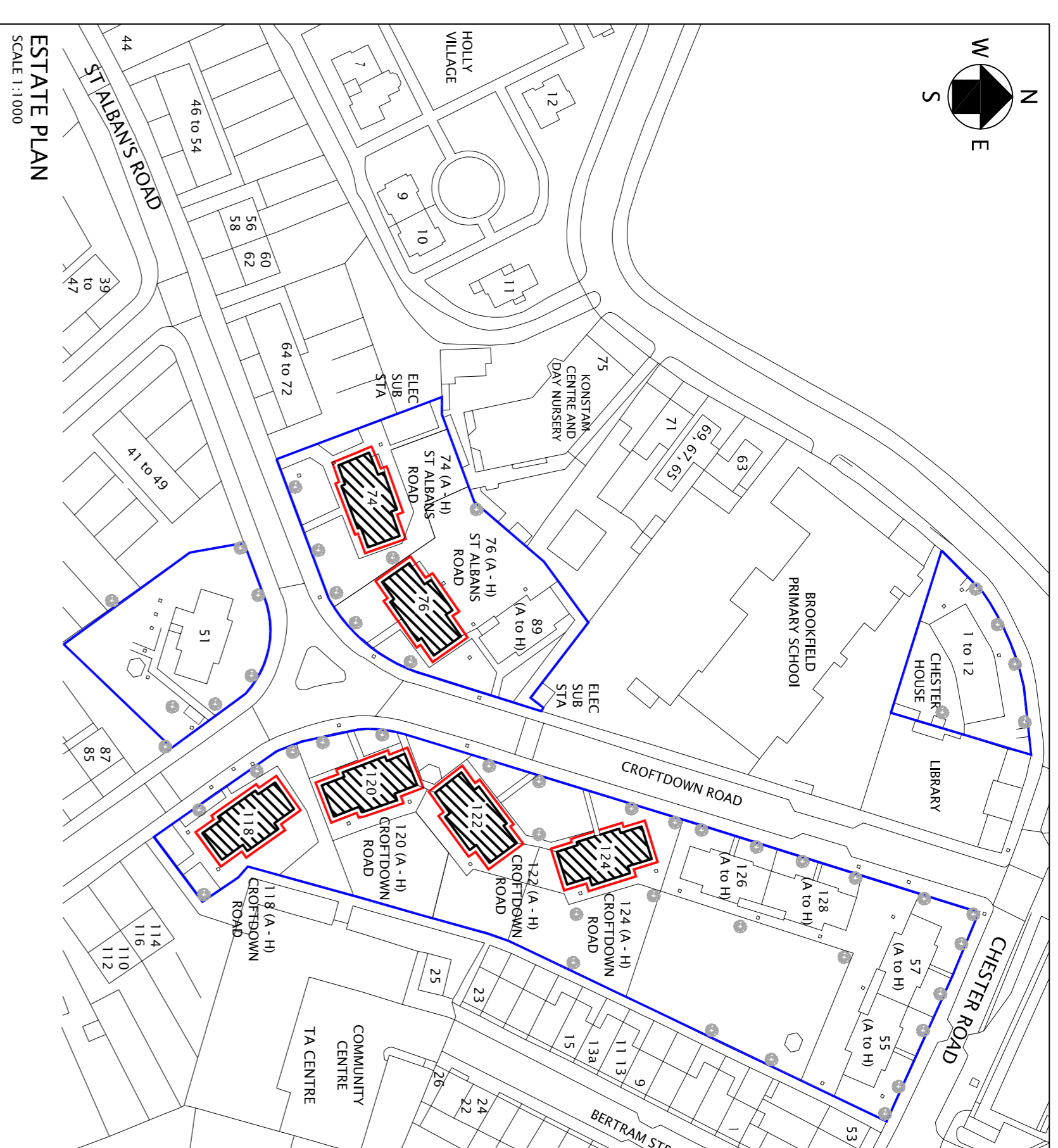
TOP WINDOW PANEL TO BE REMOVED AND REPLACED WITH A FIXED 25mm UPVC WHITE COMPOSITE PANEL

THE FLUE TERMINAL WILL BE MOUNTED TO TERMINAL & ASSOCIATED COMPONENTS SHALL BE POWDER COATED TO A BS COLOUR AS APPROVED BY THE PLANNING DEPARTMENT

FLUE TO TERMINATE WITH A MANUFACTURERS CALVISED STEEL & PLASTIC TERMINAL KIT

THE FLUE CONSISTS OF AN AIR DUCT AND A PLASTIC INNER FLUE DUCT

PROPOSED LOCATION OF BOILER



FLOOR	TYPE A	TYPE B	TYPE C	TYPE D	TYPE E	TYPE F	TYPE G	TYPE H
THIRD FLOOR	2 BEDROOM	2 BEDROOM	3 BEDROOM	3 BEDROOM	3 BEDROOM	3 BEDROOM	3 BEDROOM	3 BEDROOM
SECOND FLOOR	2 BEDROOM	2 BEDROOM	3 BEDROOM	3 BEDROOM	3 BEDROOM	3 BEDROOM	3 BEDROOM	3 BEDROOM
FIRST FLOOR	2 BEDROOM	2 BEDROOM	3 BEDROOM	3 BEDROOM	3 BEDROOM	3 BEDROOM	3 BEDROOM	3 BEDROOM
GROUND FLOOR	2 BEDROOM	2 BEDROOM	3 BEDROOM	3 BEDROOM	3 BEDROOM	3 BEDROOM	3 BEDROOM	3 BEDROOM

118, 120, 122 & 124  
CROFTDOWN ROAD  
74 & 76 ST ALBANS ROAD  
N15

NOTES

- THIS DRAWING IS TO BE READ IN CONJUNCTION WITH RELEVANT SPECIFICATION AND ALL OTHER RELEVANT DRAWINGS ISSUED BY THE ENGINEER.
- ALL DIMENSIONS AND LEVELS TO BE CHECKED ON SITE AND THE ENGINEER NOTIFIED OF ANY DISCREPANCIES PRIOR TO COMMENCEMENT OF WORK.
- THE POSITION OF ALL EQUIPMENT INDICATED ON THE DRAWING IS APPROXIMATE TO COMMENCING ERECTION.

REV	BY	AMENDMENT DESCRIPTION	CHND	DATE
		APOLLO PROPERTY SERVICES GROUP UNIT 3 CENTRIC CLOSE, OFF OVAL ROAD CAMDEN, LONDON NW1 7EP		

PROJECT:-  
REPLACEMENT OF HEATING SERVICES

TITLE:-  
AS APPROVED  
118, 120, 122 & 124 CROFTDOWN ROAD  
AND 74 & 76 ST ALBANS ROAD  
LAYOUTS & ELEVATIONS



BANGAWE ROAD  
CONRY, NORTHANTS, NN17 1HN  
TEL: 0845 168 6688 FAX: 0845 168 6685

DRAWN	CHKD BY	DATE	STATUS
MW	JR	09/12/11	PLANNING

APPROVED	DATE	STATUS
CP	09/12/11	PLANNING

SCALE 1:1000, 1:100 @ A1  
12121/P/008

REVISIONS: