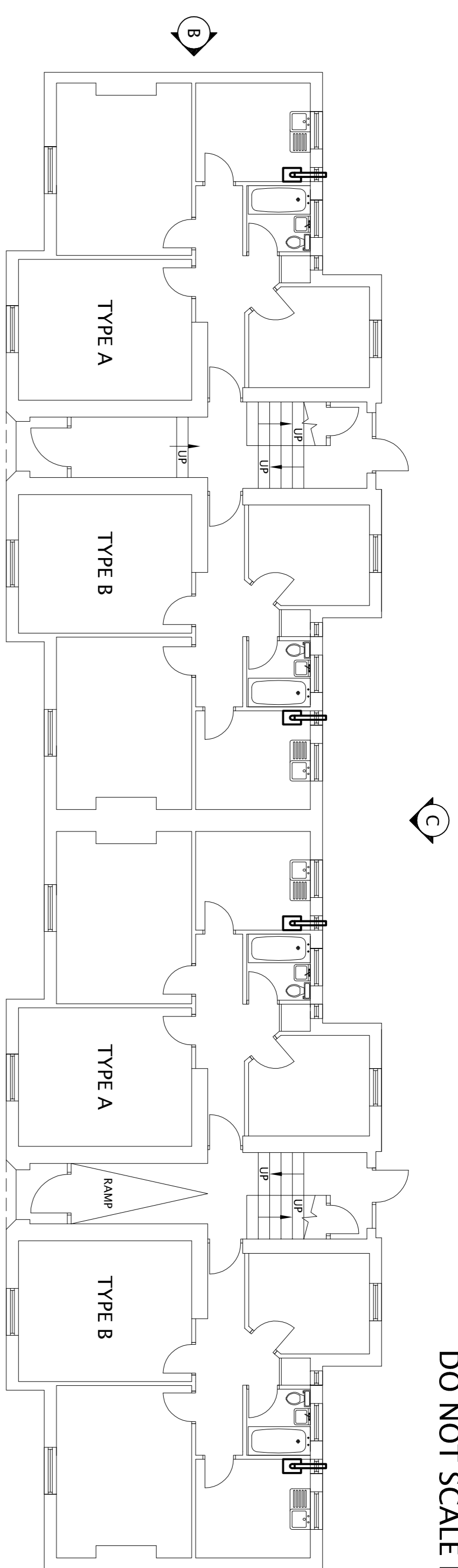
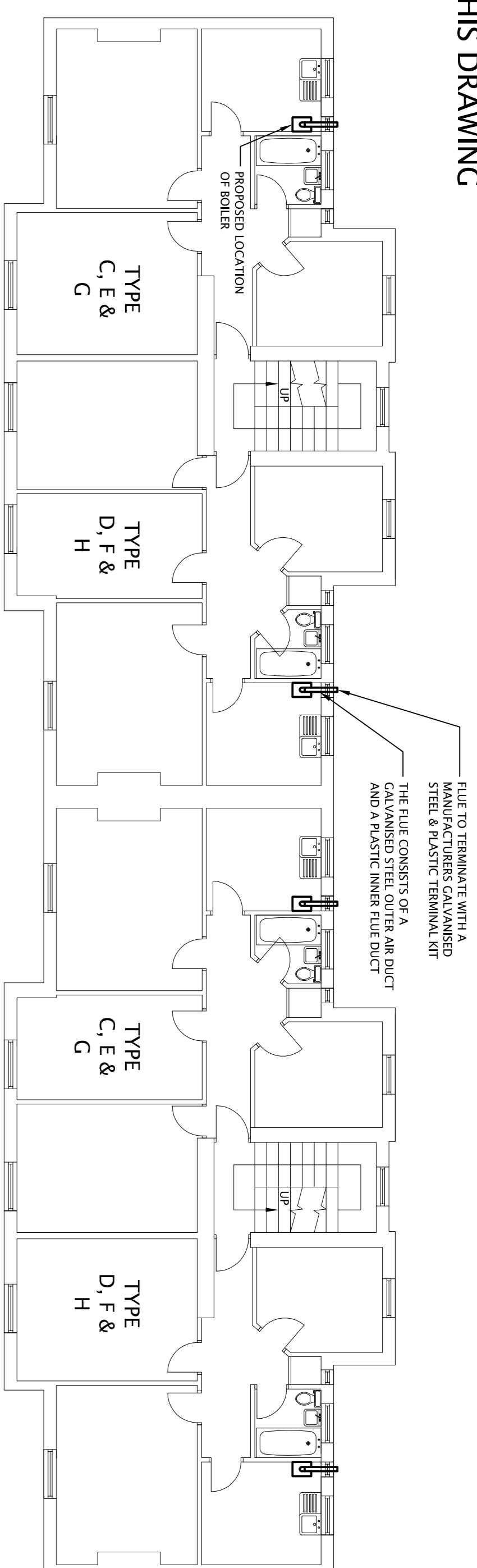


DO NOT SCALE FROM THIS DRAWING



TYPICAL AS APPROVED
GROUND FLOOR LAYOUT
SCALE 1:100

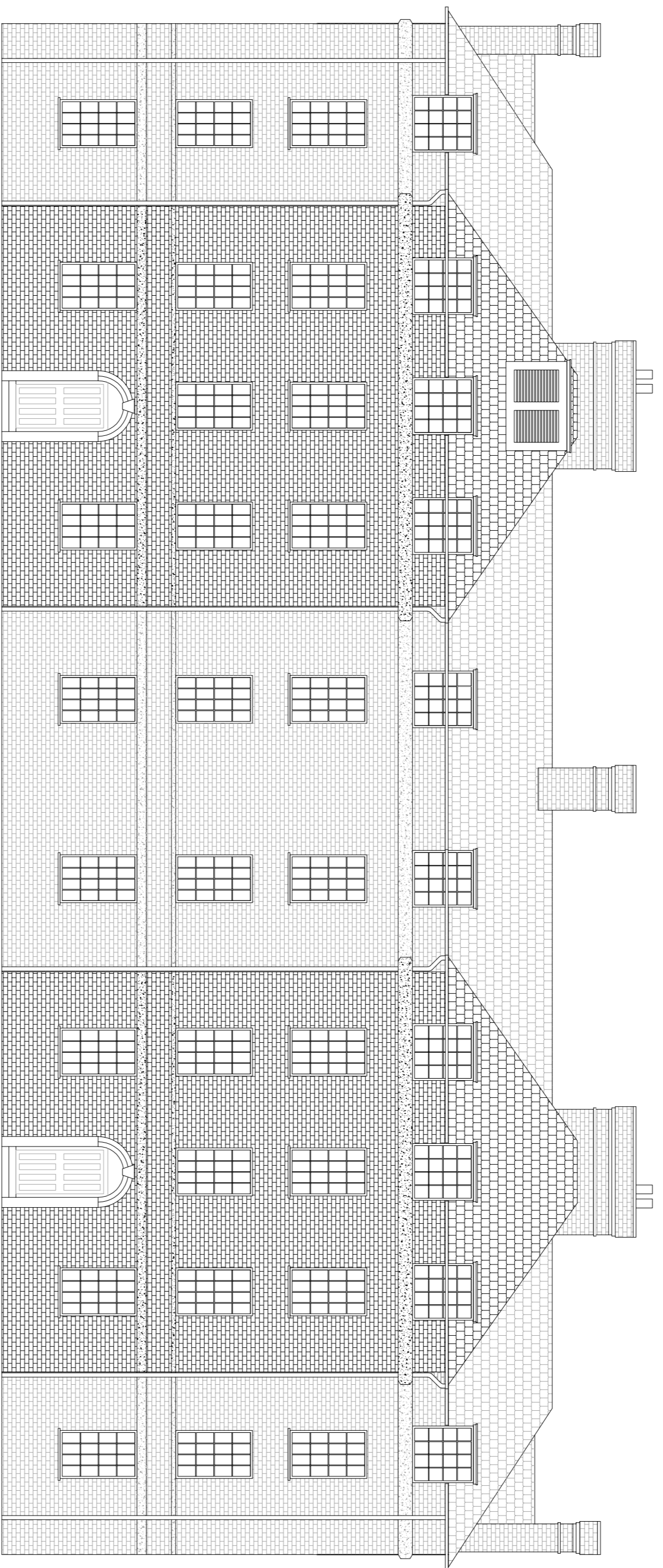


TYPICAL AS APPROVED
FIRST, SECOND AND
THIRD FLOOR LAYOUT
SCALE 1:100

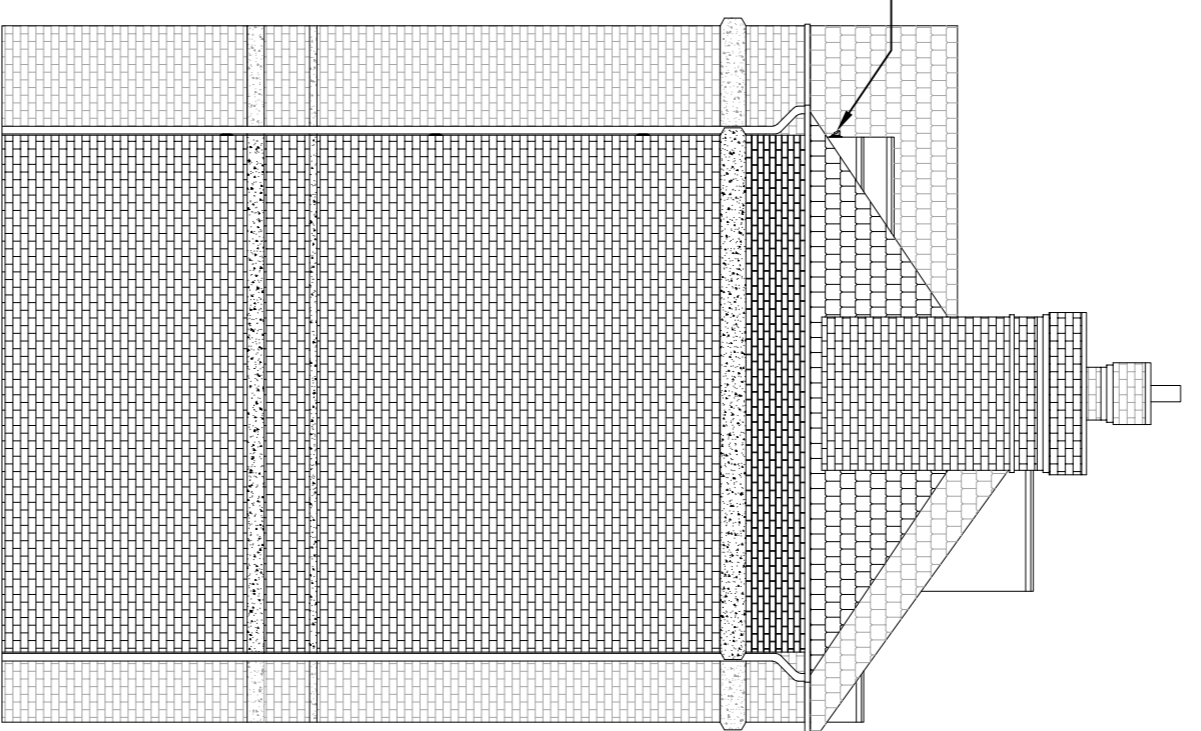
55 & 128 57 & 126

THIRD FLOOR	TYPE C 2 BEDROOM	TYPE H 3 BEDROOM	TYPE C 3 BEDROOM	TYPE H 2 BEDROOM
SECOND FLOOR	TYPE E 2 BEDROOM	TYPE F 3 BEDROOM	TYPE E 3 BEDROOM	TYPE F 2 BEDROOM
FIRST FLOOR	TYPE C 2 BEDROOM	TYPE D 3 BEDROOM	TYPE C 3 BEDROOM	TYPE D 2 BEDROOM
GROUND FLOOR	TYPE A 2 BEDROOM	TYPE B 2 BEDROOM	TYPE A 2 BEDROOM	TYPE B 2 BEDROOM

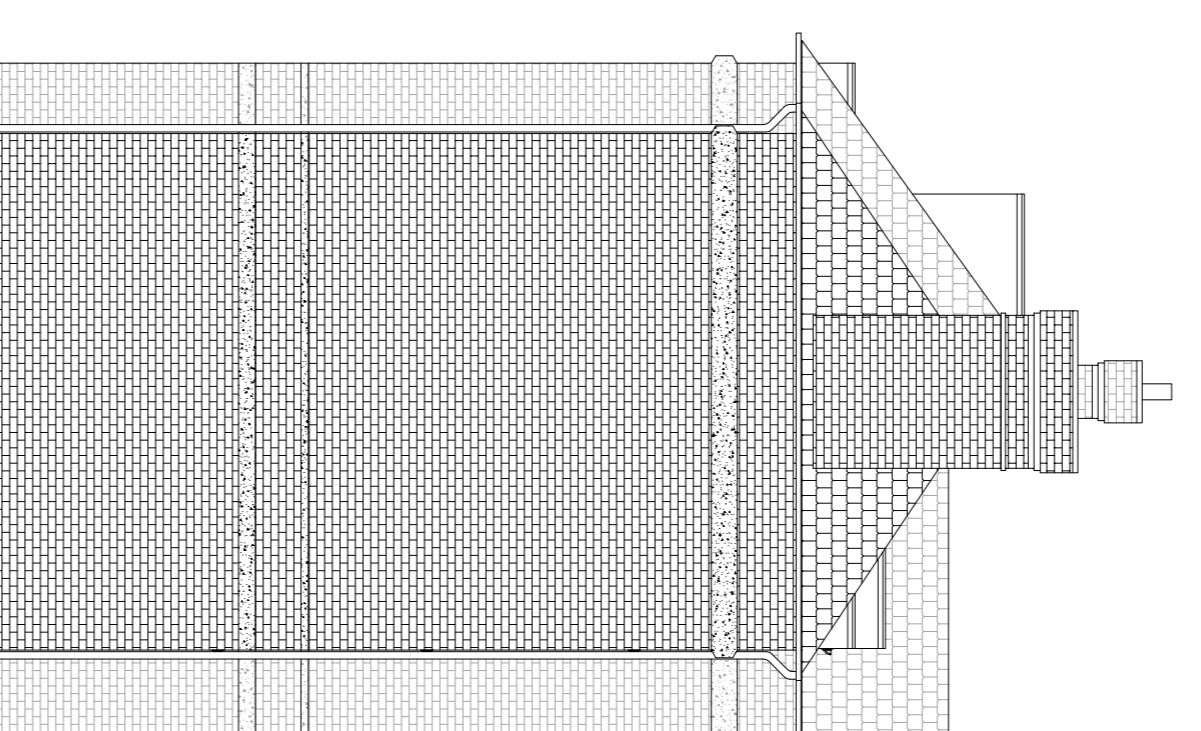
55 - 57 CHESTER ROAD &
126 - 128 CROFTDOWN ROAD
NWS



AS APPROVED
ELEVATION A
SCALE 1:100

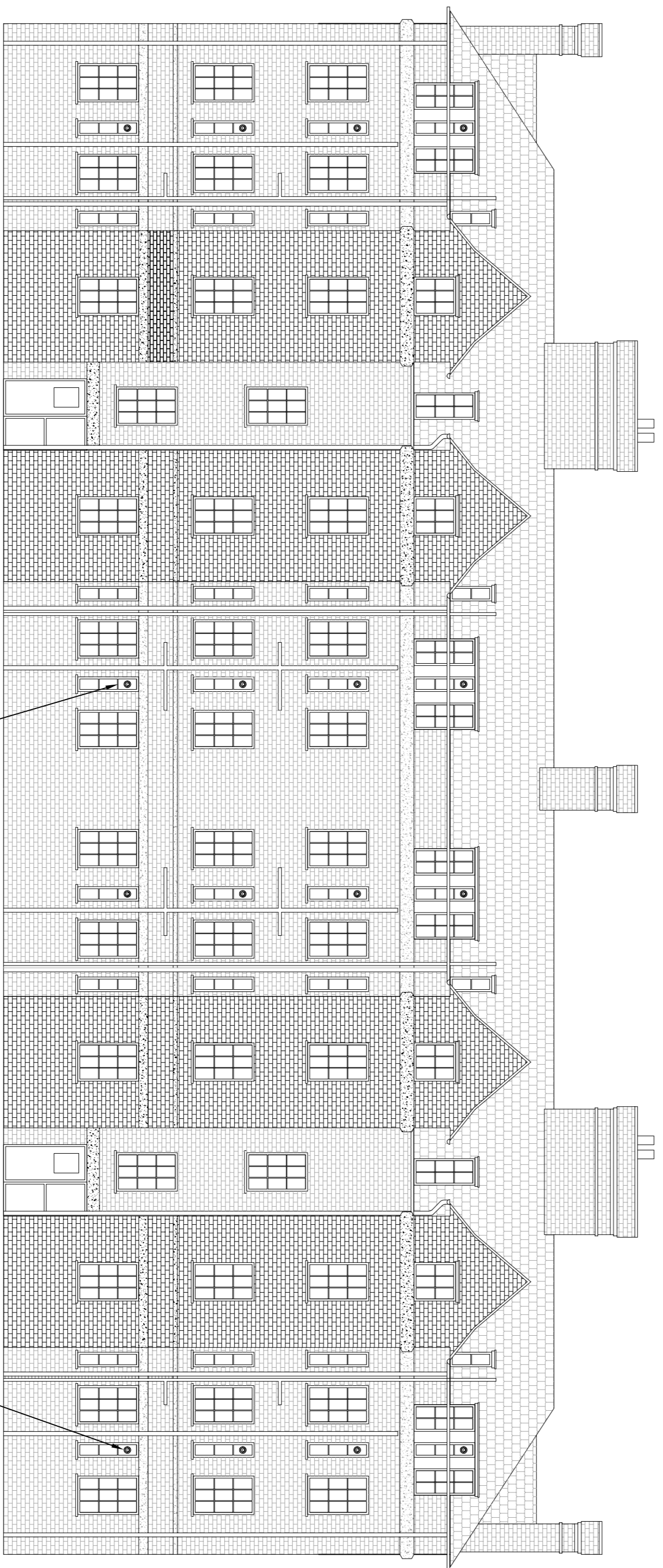


AS APPROVED
ELEVATION B
SCALE 1:100



AS APPROVED
ELEVATION D
SCALE 1:100

THE FLUE TERMINAL WILL BE MOUNTED TO THE FIXED COMPOSITE PANEL. THE TERMINAL SHALL BE POWDER COATED TO A BR COLOUR AS APPROVED BY THE PLANNING DEPARTMENT

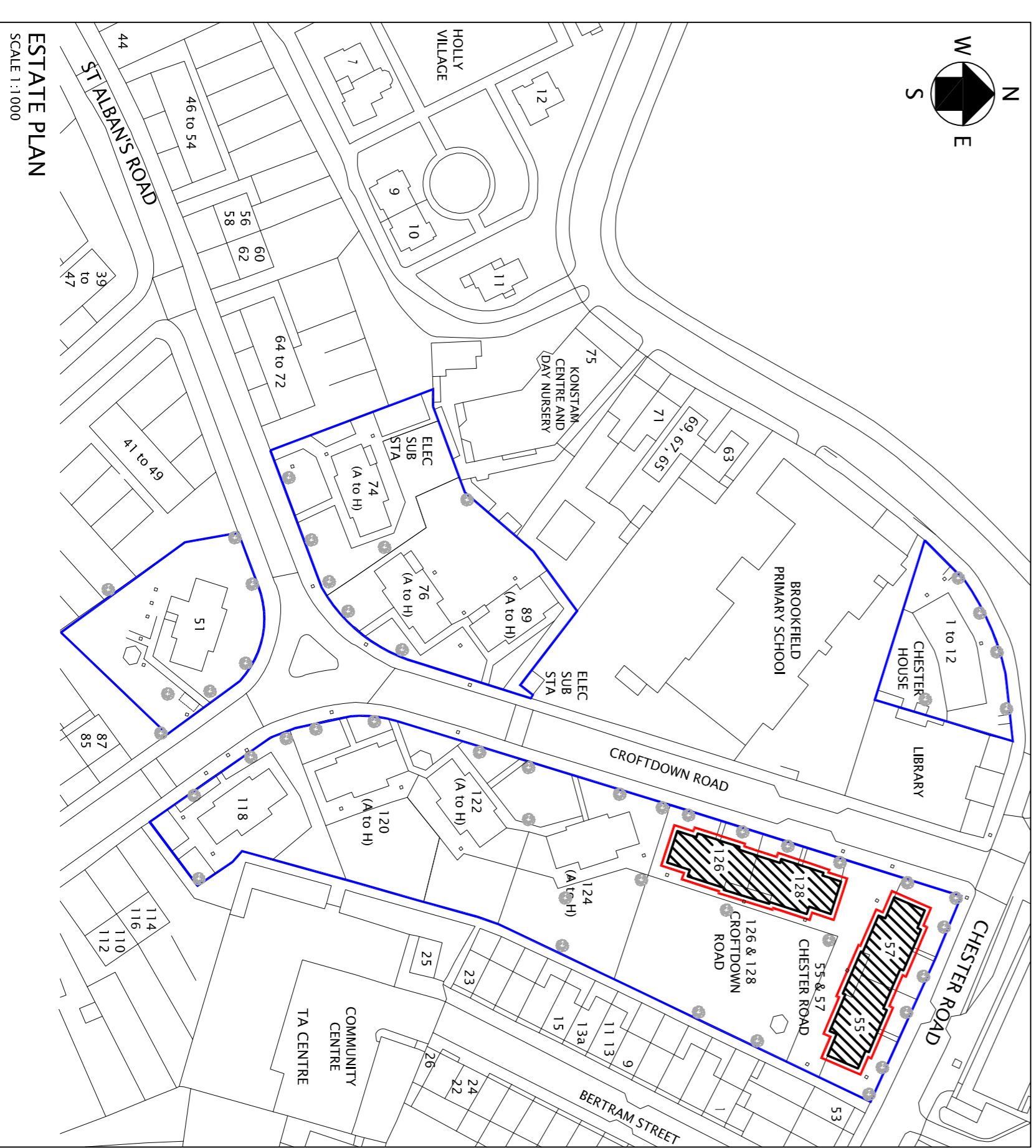
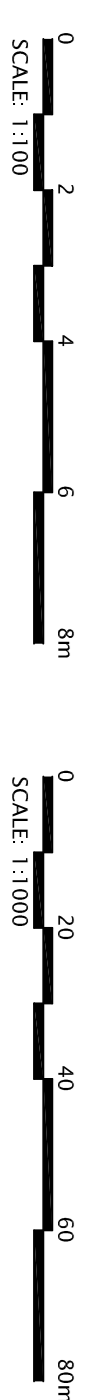


AS APPROVED
ELEVATION C
SCALE 1:100

TOP WINDOW PANEL TO BE REMOVED AND REPLACED WITH A FIXED 25mm UPVC WHITE COMPOSITE PANEL

THE FLUE TERMINAL WILL BE MOUNTED TO THE FIXED COMPOSITE PANEL. THE TERMINAL & ASSOCIATED COMPONENTS SHALL BE POWDER COATED TO BR COLOUR AS APPROVED BY THE PLANNING DEPARTMENT

- NOTES
- THIS DRAWING IS TO BE READ IN CONJUNCTION WITH RELEVANT SPECIFICATION AND ALL OTHER RELEVANT DRAWINGS ISSUED BY THE ENGINEER.
 - ALL DIMENSIONS AND LEVELS TO BE CHECKED ON SITE AND THE ENGINEER NOTIFIED OF ANY DISCREPANCIES PRIOR TO COMMENCEMENT OF WORK.
 - THE POSITION OF ALL EQUIPMENT INDICATED ON THIS DRAWING IS APPROXIMATE. THE EXACT POSITION OF ALL EQUIPMENT TO BE AGREED WITH THE ENGINEER PRIOR TO COMMENCING ERECTION.



REV	BY	AMENDMENT DESCRIPTION	CHND	DATE
<p>CLIENT:- APOLLO PROPERTY SERVICES GROUP UNIT 3 CENTRIC CLOSE, OFF OVAL ROAD CAMDEN, LONDON NW1 7EP</p> <p>PROJECT:- REPLACEMENT OF HEATING SERVICES</p> <p>TITLE:- AS APPROVED 55 & 57 CHESTER ROAD AND 126 & 128 CROFTDOWN ROAD LAYOUTS & ELEVATIONS</p>				
<p>BANGOR ROAD CORRY, NORTHANTS, NN17 1HN TEL: 0845 168 6888 FAX: 0845 168 6885</p> <p>DRAWN MW CND BY JR</p> <p>CHECKED CP DATE 09/12/11</p> <p>APPROVED CP DATE 09/12/11</p> <p>SCALE 1:1000, 1:100 @ A1 STATUS: PLANNING</p> <p>DRG. No. 12121/P/005</p> <p>REVISIONS:</p>				

