

WESTERN GOODS YARD
KINGS CROSS CENTRAL

Applied Landscape Design
Paving Tracker to Discharge:

Reserved matter conditions 2 (a)
Gas Holder Park & Canal Reach
Kings Cross Central 2014/3681/P

ALD Project Ref:	653 / 14
Document Ref:	ALD653_RP902
Document Revision:	P01
Current Issue Date:	17.07.2015
ALD working date:	11.03.2015
Reason For Issue:	Approval

Prepared By: Applied Landscape Design Ltd
Landscape Architect
Client: Carillion

INTRODUCTION

This document has been prepared to discharge the following planning conditions as highlighted below:
Under application 2014/3681/P, Gas Holder Park & Canal Reach, Kings Cross Central

CONDITION	DETAILS OF CONDITION	NOTES
1	Prior to commencement on the relevant part of the development hereby approved details of all external lighting to include location, design, specification, fittings and fixtures (including means of reducing light spillage) shall be submitted to and approved in writing by the local planning authority.	Refer to document ALD653_RP901
2 Approval of material finishes	Prior to commencement on the relevant part of the development hereby approved the following details shall be submitted and approved in writing by the local planning authority:	Information included within this document
2 (a) Paving approval	Detailed drawings and / or samples as appropriate of all paving materials and finishes (including but not limited to resin bonded gravel, sandstone paving, dutch clay pavers, granite setts, granite paving, natural stone steps, bricks) and other hard landscape surface treatments. The material under this condition shall be displayed in the form of a samples board to be retained on site for the duration of the relevant works.	Information included within this document
2 (b)	Detailed drawings of all planters, benches and seats	Refer to document ALD653_RP903
2 (c)	Detailed drawings and / or samples of materials as appropriate of any balustrading	Refer to document ALD653_RP904






The above image shows the Gas Holder 8 materials mockup which is located on site for review. Where this documents states 'see mockup' please refer to the above.

NOTE: Refer to drawing ALD653_GA002 for public realm hard landscape and lighting layout



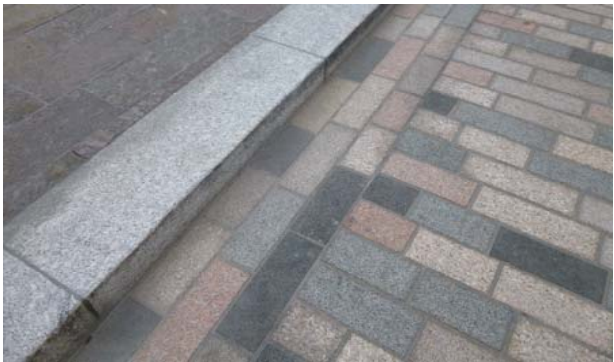

PAVING MATERIALS

Material Code	Material Details	Location	Detail drawing number	Supplier	Photo	Location example
SANDSTONE						
S1	Scoutmoor Sandstone Paver 700mm - 900mm random lengths x 600mm wide x 500mm depth Diamond Sawn Finish	Handyside Street	ALD653_LD702	Miller Druck		Zone B - The Boulevard
S2	Scoutmoor Sandstone Setts 94mm length x 94mm width x 50mm depth Diamond Sawn Finish / Pitched finish dependant on location	P1 Façade	ALD653_LD704	Miller Druck		Zone B - The Boulevard Sample of pitched finish available to view on site
S4	Scoutmoor Sandstone Steps Diamond Sawn Finish Dimensions vary Crystal Black Q3453 Flamed Finish Granite Nosing	Steps adjacent to P1	ALD653_LD862	Miller Druck	For colour and finish refer to S1 & S2 images	see above
S5	Scoutmoor Sandstone Corduroy Hazard Paving 700mm - 900mm random lengths x 600mm wide x 500mm depth Diamond Sawn Finish	To top and bottom of steps in Canal Reach (adjacent to T1 & P1)	ALD653_LD860 - ALD653_LD863	Miller Druck	For colour and finish refer to S1 & S2 images	see above
S6 G10	Crossland Hill Sandstone Blister / Tactile / Corduroy 400mm length x 400mm & 800mm width x 50mm depth to uncontrolled crossings Eleanor Red Granite by Miller Druck to controlled crossings 400mm length x 400mm & 800mm width x 50mm depth Milled	Crossland Hill Sandstone - Uncontrolled crossings Eleanor Red Granite - controlled crossings to Handyside Street	ALD653_LD713	Miller Druck		Zone B - The Boulevard

Material Code	Material Details	Location	Detail drawing number	Supplier	Photo	Location example
GRANITE SETTS						
GS1	Granite Setts 200mm - 300mm random lengths x 100mm width x 150mm depth Bush Hammered Colour Mix: 10% Smokey Black, 30% Albion Grey, 25% Millennium Mauve, 25% Millennium Pink, 10% Elelanor Red	T1 Access Road, Loading Bays and Pedestrian Crossings	ALD653_LD703	Miller Druck		Stable Street / Sitewide Kings Cross
GS2	Granite Setts 200mm - 300mm random lengths x 100mm width x 75mm depth Bush Hammered Colour Mix: 85% Millennium Mauve, 15% Millennium Pink	Building interfaces and public realm	ALD653_LD706	Miller Druck		Cubitt Square
GS3a	Reclaimed Granite Setts - Rough Band 1: 120-250mm x 80-100mm wide x approx. 100mm deep Band 2: 120-250mm x 101-115mm wide x approx. 100mm deep Band 3: 120-250mm x 116-125mm wide x approx. 100mm deep Sourced from site, contractor to confirm availability, size and colour	GH8 surround and Handyside street below cycle stands	ALD653_LD709	Miller Druck		Zone B, The Boulevard / Sitewide Kings Cross
GS3b	Reclaimed Granite Setts - Sawn Top Band 1: 120-250mm x 80-100mm wide x approx. 100mm deep Band 2: 120-250mm x 101-115mm wide x approx. 100mm deep Band 3: 120-250mm x 116-125mm wide x approx. 100mm deep Sourced from site, contractor to confirm availability, size and colour	GH8 surround to northern ramped access and steps Around refurbished hand pump	ALD653_LD709 ALD653_LD717	Miller Druck		Zone B, The Boulevard / Sitewide Kings Cross



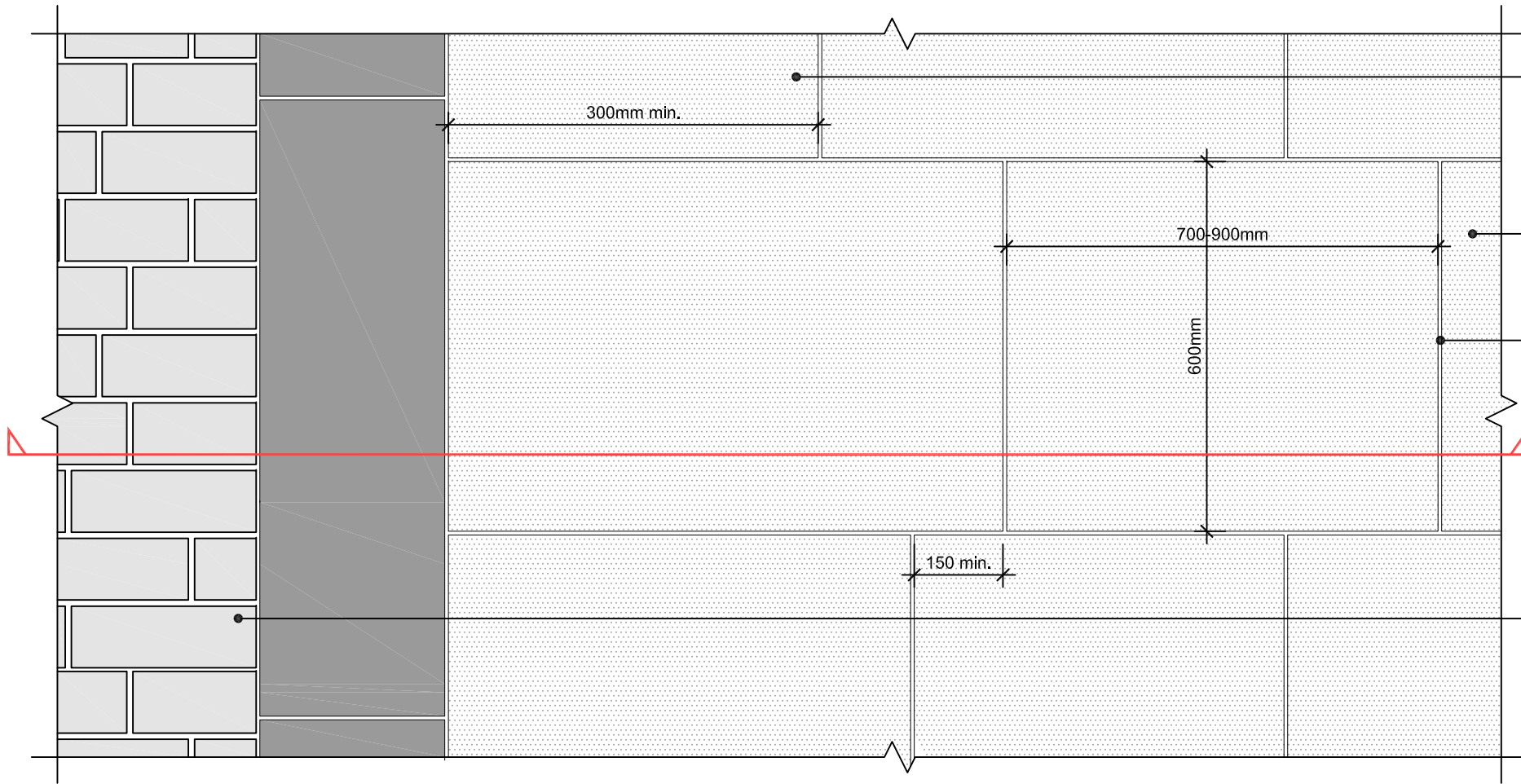
Material Code	Material Details	Location	Detail drawing number	Supplier	Photo	Location example
GAS HOLDER 8 GRANITE						
GS4a	Granite Setts 92mm x 92mm x 60mm Grey coloured stone setts Colour: Smokey Black Q4517 Split Finish to all sides	GH8 internal 2 rings	L-685 SK01	Miller Druck		See mockup NOTE: Images show granite when wet
GS4b	Granite Setts 92mm x 92mm x 60mm Grey coloured stone setts Colour: Smokey Black Q4517 Sawn and flamed top, split sides	GH8 internal	L-685 MD-106	Miller Druck		See mockup NOTE: Images show granite when wet
G5	Granite curved stone edging slabs to bleachers 237mm / 278mm wide x 167mm deep x varies length (as shown) granite edge stone Colour: Smokey Black Q4517 Sawn & Flamed Finish	GH8 internal (adjacent to soft landscape)	L-685 Base Step & Bleacher MD-201 & 202	Miller Druck		See mockup NOTE: Images show granite when wet
G6	Granite steps with contrasting Granite Nosing (Smokey Silver colour) Colour: Smokey Black Q4517 Flamed Finish dimensions vary with corduroy hazard warning various lengths x 394mm width x 60mm depth. NOTE: Colour of corduroy hazard paving varies dependant on location. Smokey Black Q4517 to within GH8 internal Millennium Mauve to GH8 External (colour as per GK2)	GH8 Steps	L-685 Base Step & Bleacher MD-201 & 202	Miller Druck		See sample NOTE: Images show granite when wet
G7	Granite curved stone units 394mm wide x varies length x 50mm deep	GH8 internal (adjacent to soft landscape)	ALD653_LD820	Miller Druck	Refer to G5 for colour of curved stone units	see above
G8	Granite Cladding below GH8 rollers dimensions vary, refer to detailed drawing	GH8 below rollers	ALD653_LD840	Miller Druck	Refer to G5 for colour	Refer to G5 for colour

Material Code	Material Details	Location	Detail drawing number	Supplier	Photo	Location example
STEPS						
G9	Granite Stone Steps - Millennium Mauve (G354) with Cystal Black Q3453 Nosing	Adjacent to T1	ALD653_LD860 - LD862	Miller Druck	For colour and finish, refer to GK2	see GK2
GRANITE KERBS						
GK1	Granite Kerb / Edging 1000mm length x 300mm width x 200mm depth Fine Picked Royal White Upstand varies dependant on location	kerb demarcation	ALD653_LD701	Miller Druck		Sitewide Kerbs ie. Stable Street
GK2	Granite Kerb / Edging 1000mm length x 150mm width x various depths Millennium Mauve	To Canal Reach & P1 planter edges	ALD653_RP904	Miller Druck		Cubitt Square

Material Code	Material Details	Location	Detail drawing number	Supplier	Photo	Location example
CLAY PAVERS						
C1	Neland Dutch Clay Pavers 200mm length x 50mm width x 85mm depth Untumbled finish Colour: Triton	Canal Reach	ALD653_LD707	Hardscape		See mockup on site
BRICKS						
B1	Facing Brick Cladding / Paving 220mm x 105mm x 65mm Colour: 60% D48, 40% D55 Mortar: Y14	Gas holder 8 plinths vertical walls	ALD653_LD800 - LDD805	Peterson Tegl		See mockup on site
B2	Brick slips to top of Roller Column Foundation 220mm x 105mm x 20mm Colour: 60% D48, 40% D55 Mortar: Y14	Gas holder 8 paviors to above roller column foundation	ALD653_LD800 - LDD805	Peterson Tegl		See mockup on site



APPENDIX A: CANAL REACH / PUBLIC REALM - PAVING TYPICAL DETAILS



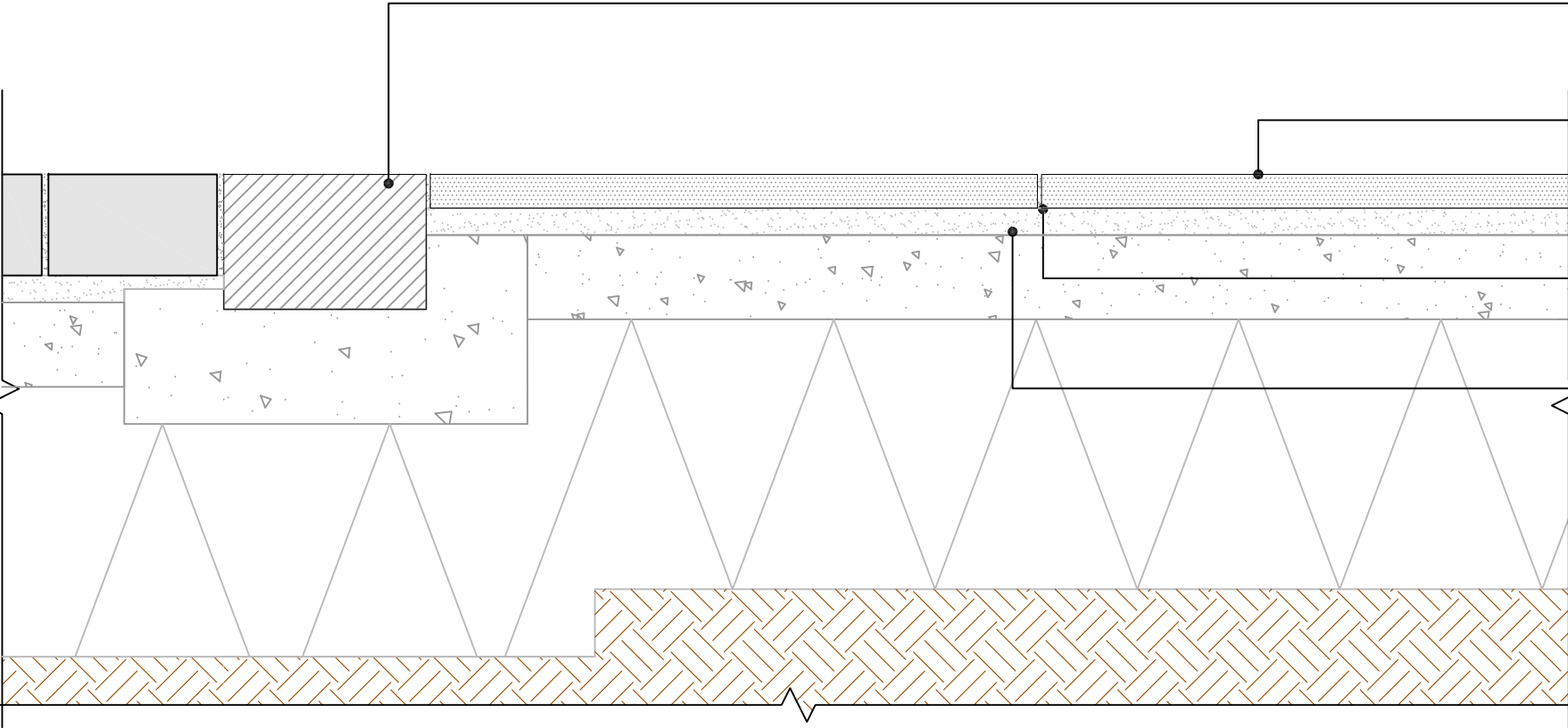
MINIMUM PAVING UNIT AT KERB AND DIFFERENT PAVING INTERFACES = 300mm.
(IN THIS INSTANCE INTERFACE IS SHOWN WITH A 1m long x 300mm WIDE KERB UNIT)

BETWEEN 700mm - 900mm RANDOM LENGTH x 600mm WIDTH x 50mm DEPTH
DIAMOND SAWN FINISH, SCOUTMOOR SANDSTONE PAVIORS BY MILLER DRUCK OR EQUAL AND APPROVED

6mm MORTAR JOINT COLOURED TO MATCH PAVING

ADJACENT PAVING VARIES

DETAIL H01a - PLAN LAYOUT OF SCOUTMOOR SANDSTONE PAVIORS WITH GRANITE KERB
SCALE 1:10 @ A3



1000mm LENGTH x 300mm WIDTH x 200mm DEPTH
FINE PICKED ROYAL WHITE GRANITE KERB TO ENGINEERS DETAIL
AND SPECIFICATION BY MILLER DRUCK OR EQUAL AND APPROVED
UPSTAND VARIES

BETWEEN 700mm - 900mm RANDOM LENGTH x 600mm WIDTH x 50mm DEPTH
DIAMOND SAWN FINISH SCOUTMOOR SANDSTONE PAVIORS
BY MILLER DRUCK OR EQUAL AND APPROVED

6mm TUFFGROUT MORTAR JOINT TO MATCH PAVING
BY STEINTEC OR EQUAL AND APPROVED

40mm SPECIALIST BEDDING MORTAR

LOCATION OF PAVING:
To Handside Street & Hodder
Street Pavements

DETAIL H01b - SECTION OF SCOUTMOOR SANDSTONE PAVIORS WITH GRANITE KERB
SCALE 1:10 @ A3

All dimensions to be verified on site. Figured dimensions to take precedence to those scaled. Any areas indicated on this drawing are for guidance only, no responsibility is taken for their accuracy.

The drawing is the property of Applied Landscape Design Limited. Copyright is reserved by them and the drawing is issued on the condition that it is not copied, reproduced, retained or disclosed to any unauthorized person, either wholly or in part without the written consent in writing of Applied Landscapes.


© 2015 Applied Landscape Design Limited. All rights reserved.


CDM/H&S:
The works illustrated on this drawing have been reviewed against the Design CDM Risk Register and appropriate risks are noted as:
Construction:
• Handling heavy materials / large pieces of stone
• Working adjacent to structures
• Working adjacent to existing structures (Close Holder B)
Maintenance:
Demolition:

NOTES / KEY:

REFERENCE DRAWINGS/DOCUMENTS

no.	Issued	date
C01	First Issue for Construction	28.05.15
P01	First Issue for Information	27.03.15

CLIENT:


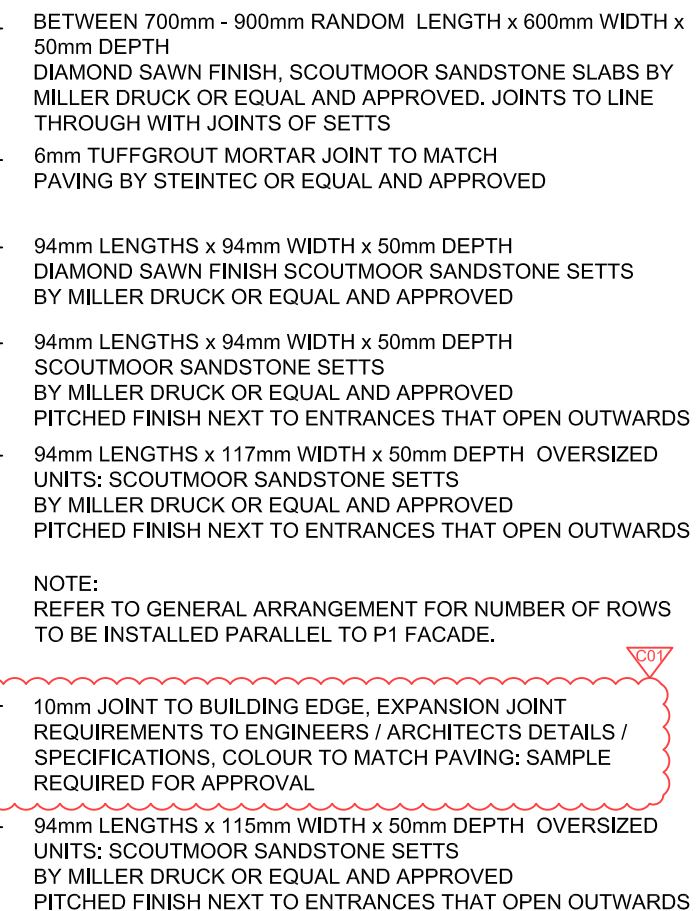
LANDSCAPE ARCHITECT:
The Threshing Barn
Bignell Park Barns
Chesherton, Nr. Bicester
Oxfordshire, OX26 1TD
Tel: 01869 249776
Email: mail@appliedlandscape.co.uk


PROJECT:
WESTERN GOODS YARD
KINGS CROSS CENTRAL

DRAWING TITLE:
WGTY TYPICAL DETAILS
PAVING PATTERN AND SECTION
SCOUTMOOR SANDSTONE PAVIORS

drawn:	scale:	
PU	1:10 @ A3	
checked:	status:	
CW	Construction	
date:	xref file ref:	
16.02.2015	ALD653_LDbase	
PROJECT NO.	DRAWING NUMBER:	REVISION:
ALD653	LD701	C01

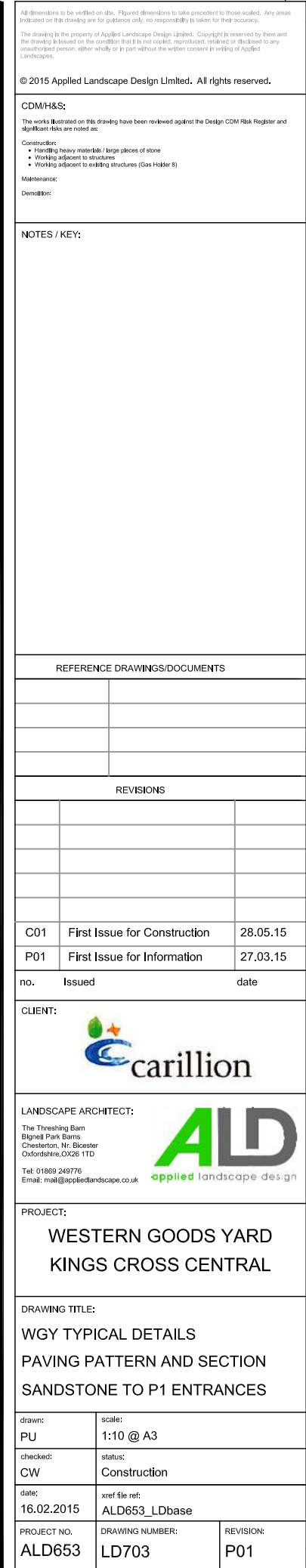
ORIGINAL A3 SIZE SHEET



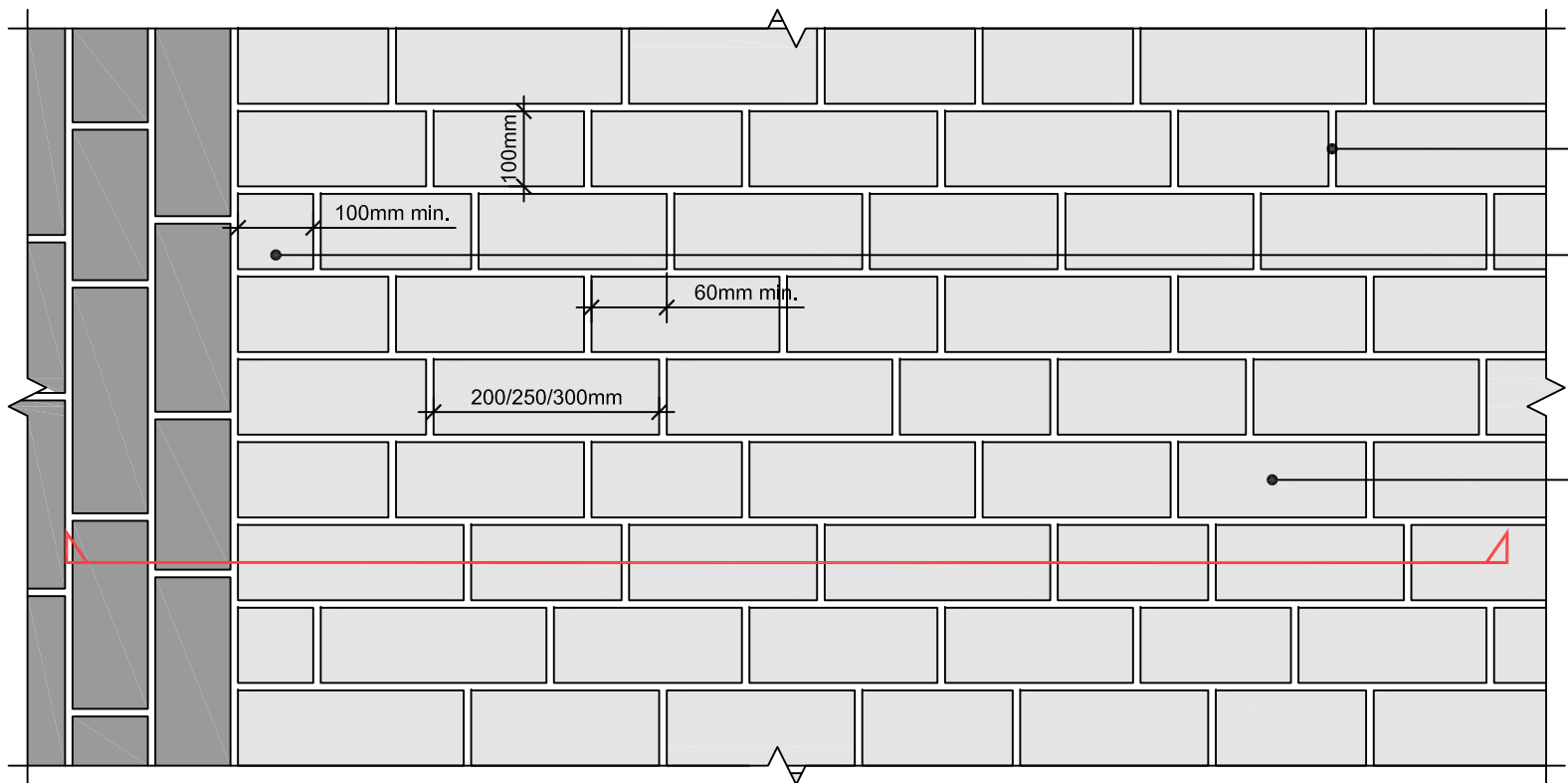
LOCATION OF PAVING:
Adjacent to P1:
pitched finish next to entrances that
open outwards

DETAIL H02b - SECTION THROUGH SANDSTONE SETTS
SCALE 1:10 @ A3

ORIGINAL A3 SIZE SHEET



LOCATION OF PAVING:
Adjacent to P1 to building entrances



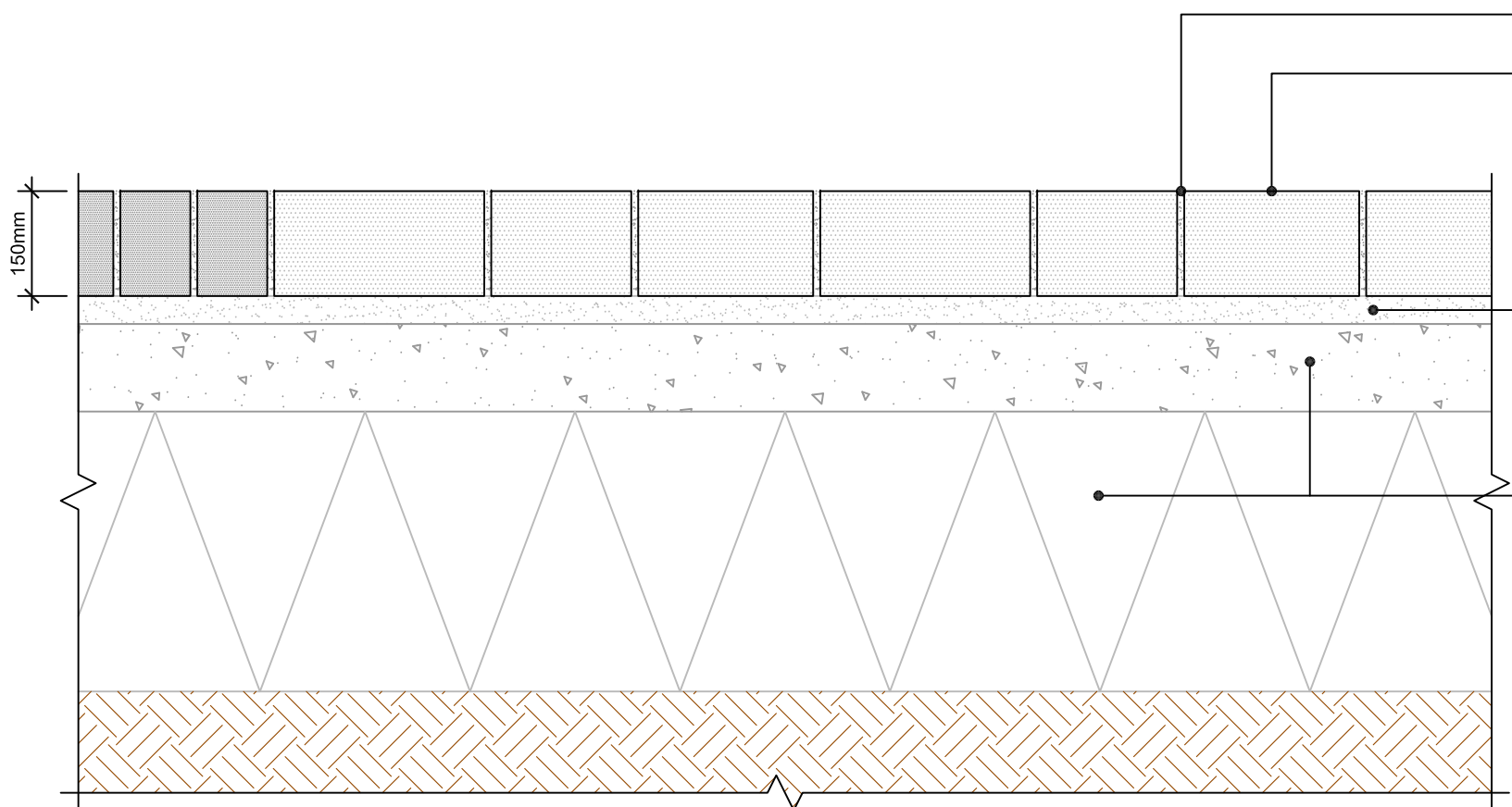
DETAIL H04a - PLAN LAYOUT OF NEW GRANITE SETTS
SCALE 1:10 @ A3

10-15mm MORTAR JOINT COLOURED TO MATCH PAVING

MINIMUM UNIT LENGTH AT INTERFACE WITH
OTHER PAVING = 100mm.
(ADJACENT PAVING VARIES)

NEW GRANITE SETTS - FINE PICKED
100mm WIDE x 200/250/300mm LONG x 150mm DEEP
LAID IN RANDOM PATTERN

COLOUR MIX TO MATCH RECLAIMED GRANITE SETTS
FOUND ON SITE: ALBION GREY (30%)
MILLENNIUM MAUVE (25%)
MILLENNIUM PINK (25%)
ELEANOR RED (10%)
SMOKEY BLACK (10%)



DETAIL H04b - SECTION THROUGH NEW GRANITE SETTS (150mm DEEP)
SCALE 1:10 @ A3

10-15mm MORTAR JOINT COLOURED TO MATCH PAVING

NEW GRANITE SETTS - FINE PICKED
100mm WIDE x 200/250/300mm LONG x 150mm DEEP
LAID IN RANDOM PATTERN
COLOUR MIX TO MATCH RECLAIMED GRANITE SETTS
FOUND ON SITE: ALBION GREY (30%)
MILLENNIUM MAUVE (25%)
MILLENNIUM PINK (25%)
ELEANOR RED (10%)
SMOKEY BLACK (10%)

40mm MORTAR BED

SUB BASE AND PAVING BUILD UP TO ENGINEERS
DETAIL AND SPECIFICATION

LOCATION OF PAVING:
T1 Access Road
Handyside Street raised tables
Loading Bays
Vehicular assess to P1

All dimensions to be verified on site. Figured dimensions to take precedence to those scaled. Any areas indicated on this drawing are for guidance only, no responsibility is taken for their accuracy.
The drawing is the property of Applied Landscape Design Limited. Copyright is reserved by them and the drawing is issued on the condition that it is not copied, reproduced, retained or disclosed to any unauthorized person, either wholly or in part without the written consent in writing of Applied Landscapes.

© 2015 Applied Landscape Design Limited. All rights reserved.

CDM/H&S:

The works illustrated on this drawing have been reviewed against the Design CDM Risk Register and significant risks are noted as:

Construction:

- Handling heavy materials / large pieces of stone
- Working adjacent to structures
- Working adjacent to existing structures (Gas Holder 8)

Maintenance:

Demolition:

NOTES / KEY:

REFERENCE DRAWINGS/DOCUMENTS

REVISIONS

C01	First Issue for Construction	28.05.15
P01	First Issue for Information	27.03.15

no. Issued date

CLIENT:



LANDSCAPE ARCHITECT:

The Threshing Barn
Blignell Park Barns
Chesherton, Nr. Bicester
Oxfordshire, OX26 1TD

Tel: 01869 249776
Email: mail@appliedlandscapes.co.uk



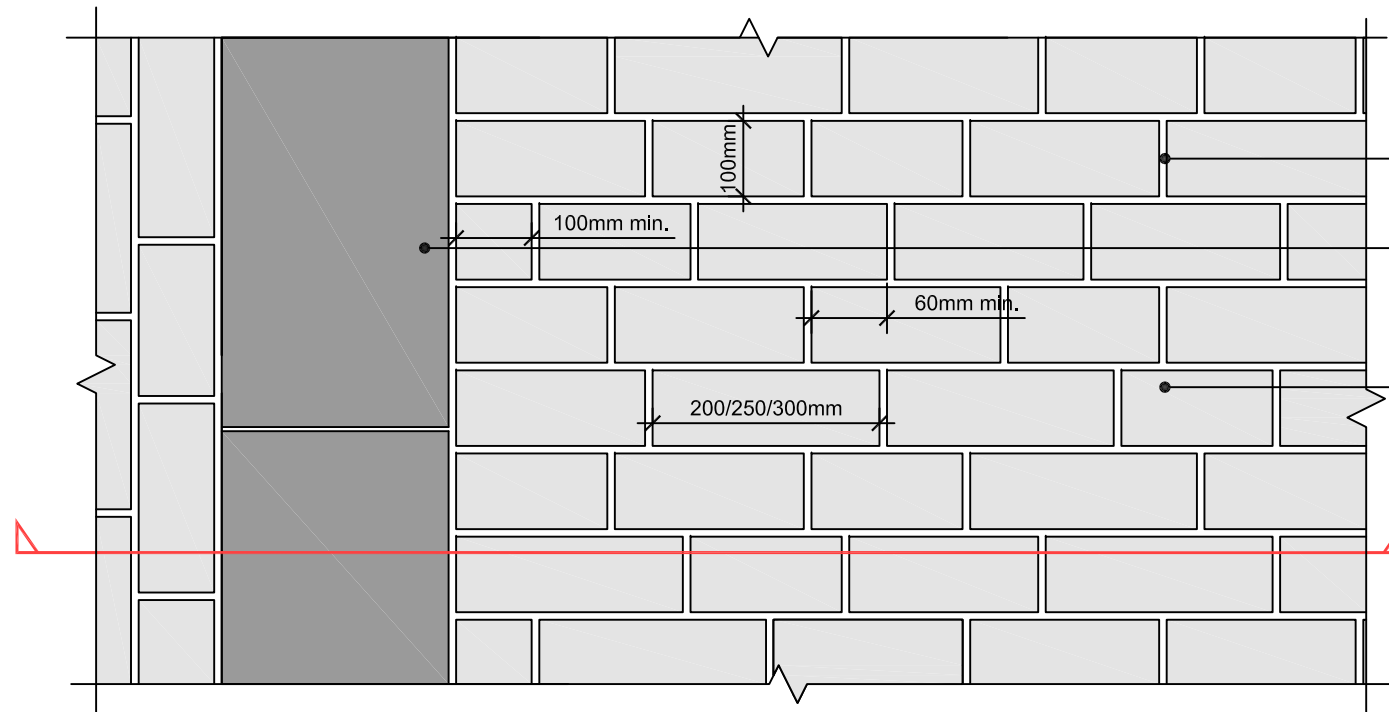
PROJECT:

WESTERN GOODS YARD
KINGS CROSS CENTRAL

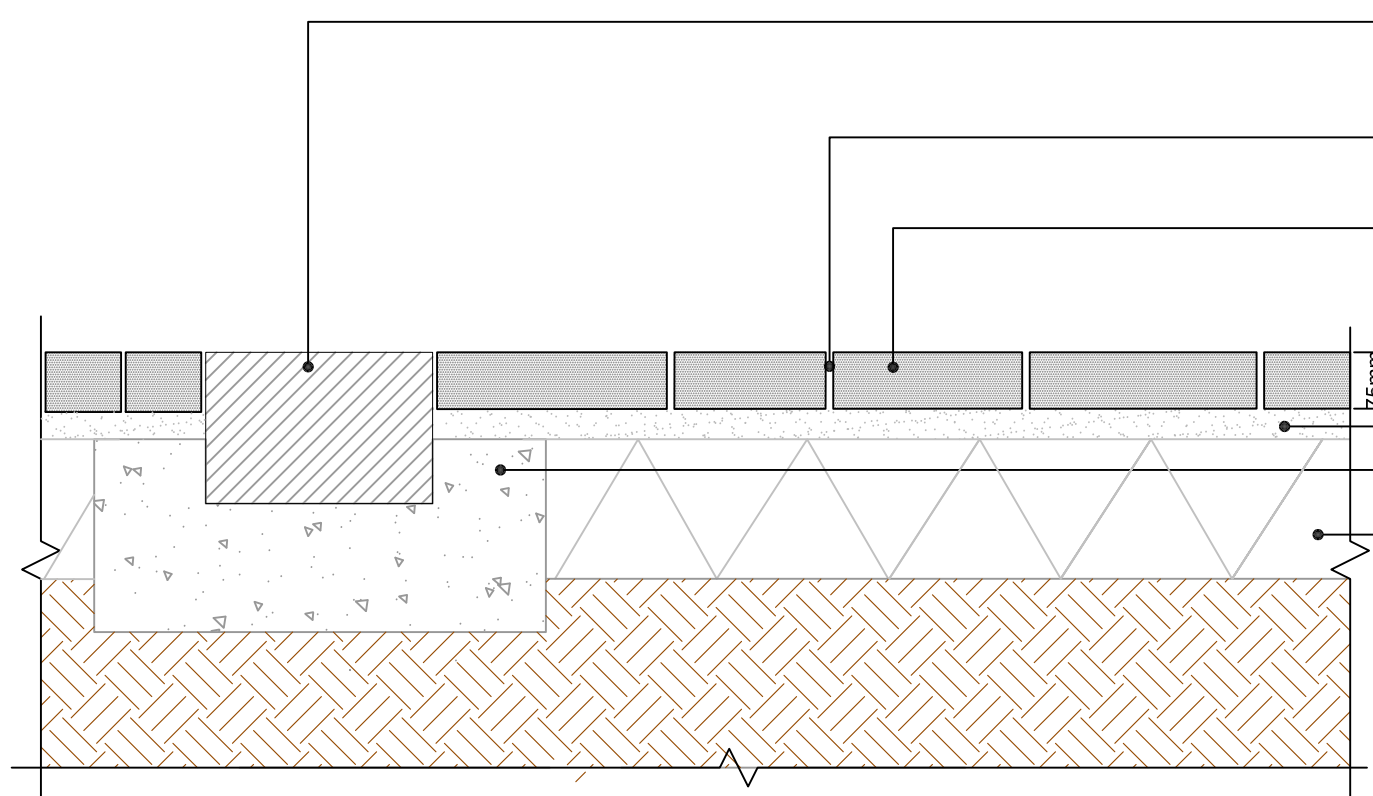
DRAWING TITLE:

WGTY TYPICAL DETAILS
PAVING PATTERN AND SECTION
NEW GRANITE SETTS (150mm DEEP)

drawn:	scale:	
PU	1:10 @ A3	
checked:	status:	
CW	Construction	
date:	xref file ref:	
16.02.2015	ALD653_LDbase	
PROJECT NO.	DRAWING NUMBER:	REVISION:
ALD653	LD704	C01



DETAIL H05a - PLAN LAYOUT OF GRANITE KERB & PINK GRANITE SETTS
SCALE 1:10 @ A3



DETAIL H05b - SECTION THROUGH PINK GRANITE SETTS (75mm DEEP) & GRANITE KERB
SCALE 1:10 @ A3

10-15mm MORTAR JOINT COLOURED TO MATCH PAVING
BY STEINTEC OR EQUAL AND APPROVED

1000mm LENGTH x 300mm WIDTH x 200mm DEPTH,
FINE PICKED ROYAL WHITE GRANITE KERB TO
ENGINEERS DETAIL AND SPECIFICATION BY MILLER
DRUCK OR EQUAL AND APPROVED

NEW GRANITE SETTS - FINE PICKED
100mm WIDE x 200/250/300mm LONG x 75mm DEEP
LAID IN RANDOM PATTERN

COLOUR MIX: MILLENNIUM MAUVE (15%)
 MILLENNIUM PINK (85%)

BY MILLER DRUCK OR EQUAL AND APPROVED

1000mm LENGTH x 300mm WIDTH x 200mm DEPTH
FINE PICKED ROYAL WHITE GRANITE KERB TO
ENGINEERS DETAIL AND SPECIFICATION BY MILLER
DRUCK OR EQUAL AND APPROVED

10-15mm MORTAR JOINT COLOURED TO MATCH PAVING
BY STEINTEC OR EQUAL AND APPROVED

NEW GRANITE SETTS - FINE PICKED
100mm WIDE x 200/250/300mm LONG x 75mm DEEP
LAID IN RANDOM PATTERN

COLOUR MIX: MILLENNIUM MAUVE (15%)
 MILLENNIUM PINK (85%)

BY MILLER DRUCK OR EQUAL AND APPROVED
40mm SPECIALIST BEDDING MORTAR

HAUNCHING TO ENGINEERS DETAIL AND
SPECIFICATION

SUBBASE TO ENGINEERS DETAIL AND SPECIFICATION

LOCATION OF PAVING:
Canal Reach Adjacent to T1
Adjacent to Gas Holder 8

All dimensions to be verified on site. Figured dimensions to take precedence to those scaled. Any areas indicated on this drawing are for guidance only, no responsibility is taken for their accuracy.

The drawing is the property of Applied Landscape Design Limited. Copyright is reserved by them and the drawing is issued on the condition that it is not copied, reproduced, retained or disclosed to any unauthorized person, either wholly or in part without the written consent in writing of Applied Landscapes.


© 2015 Applied Landscape Design Limited. All rights reserved.


CDM/H&S:
The works illustrated on this drawing have been reviewed against the Design CDM Risk Register and significant risks are noted as:
Construction:
• Handling heavy materials / large pieces of stone
• Working adjacent to structures
• Working adjacent to existing structures (Gas Holder 8)
Maintenance:
Demolition:

NOTES / KEY:

REFERENCE DRAWINGS/DOCUMENTS

no.	Issued	date
C01	First Issue for Construction	28.05.15
P01	First Issue for Information	27.03.15

CLIENT:


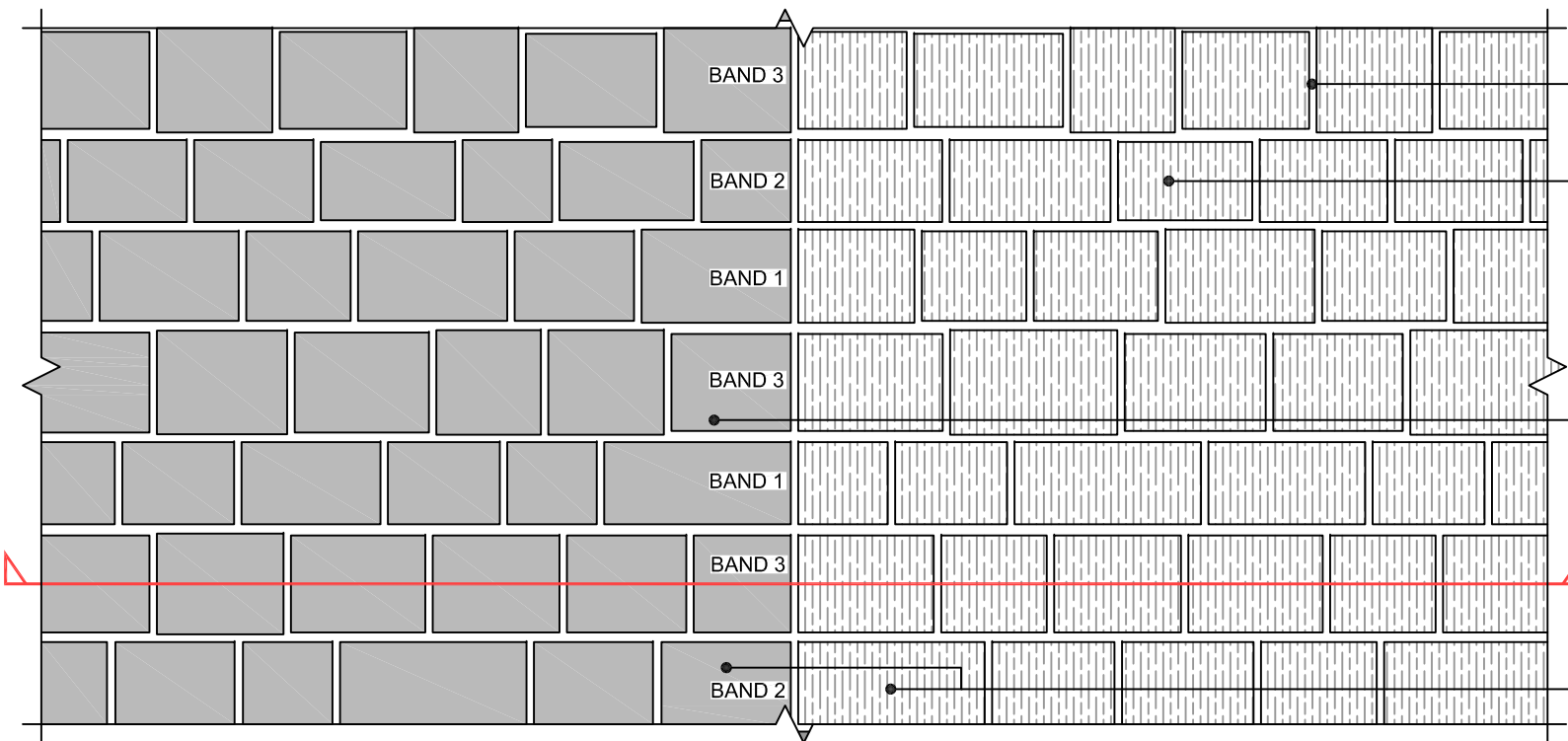
LANDSCAPE ARCHITECT:
The Threshing Barn
Bignell Park Barns
Chesherton, Nr. Bicester
Oxfordshire, OX26 1TD
Tel: 01869 249776
Email: mail@appliedlandscape.co.uk


PROJECT:
WESTERN GOODS YARD
KINGS CROSS CENTRAL

DRAWING TITLE:
WGTY TYPICAL DETAILS
PAVING PATTERN AND SECTION
PINK GRANITE SETTS (75mm DEEP)

drawn:	scale:	
PU	1:10 @ A3	
checked:	status:	
CW	Construction	
date:	xref file ref:	
16.02.2015	ALD653_LDbase	
PROJECT NO.	DRAWING NUMBER:	REVISION:
ALD653	LD705	C01

ORIGINAL A3 SIZE SHEET



DETAIL H06a - PLAN LAYOUT VIEW OF RECLAIMED GRANITE SETTS
SCALE 1:10 @ A3

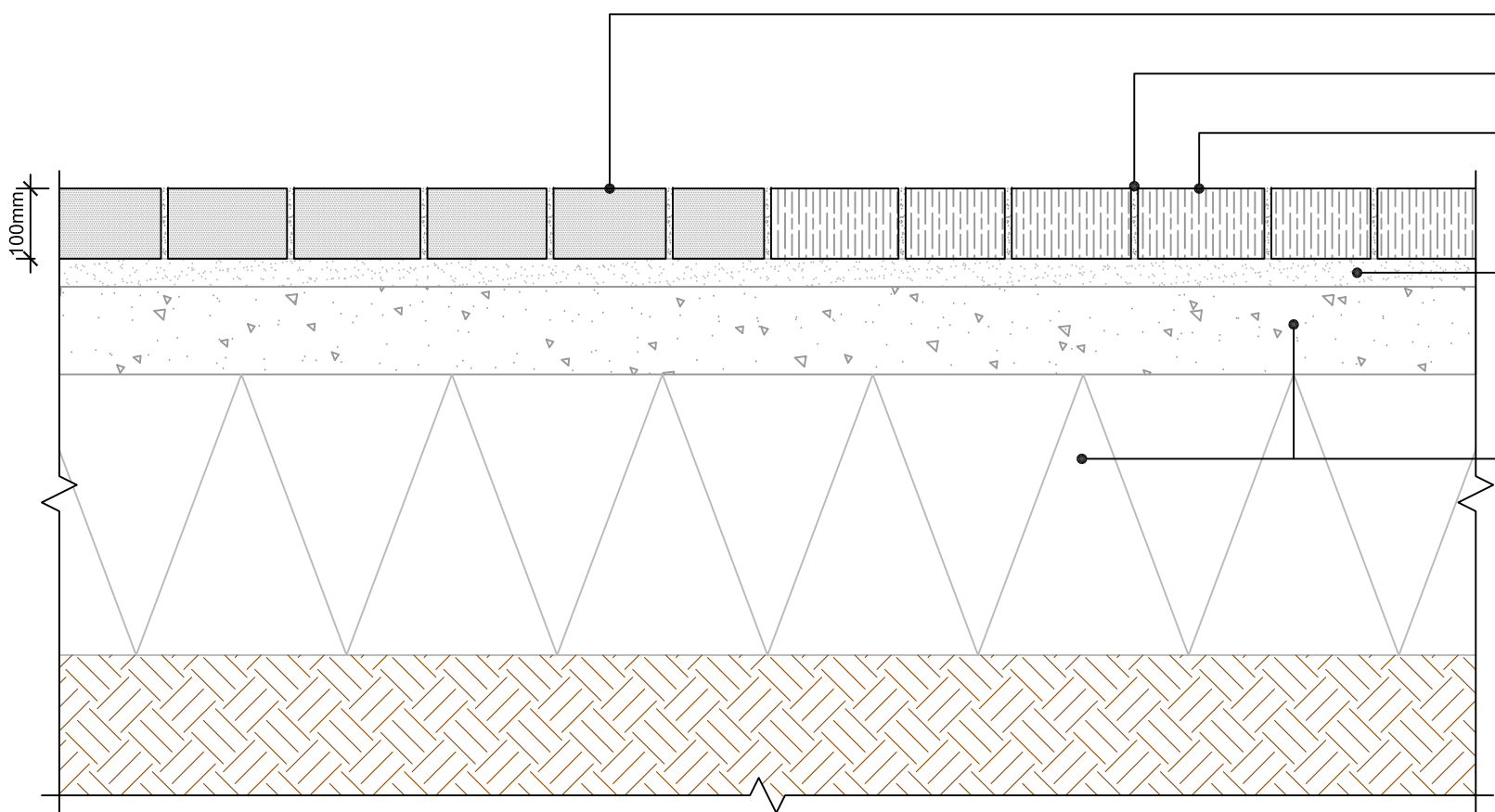
10-15mm TUFFGROUT MORTAR JOINT
COLOURED TO MATCH PAVING, BY
STEINTEC OR EQUAL AND APPROVED

RECLAIMED GRANITE SETTS SAWN TOP
& BUSH HAMMERED - SOURCED FROM
SITE CONTRACTOR TO CONFIRM MIX
AVAILABILITY.
120-250mm LENGTH x 3 BAND WIDTHS x
APPROX. 100mm DEPTH.
BAND 1 80-100mm WIDTH
BAND 2 101-115mm WIDTH
BAND 3 116-125mm WIDTH

RECLAIMED GRANITE SETTS ROUGH -
SOURCED FROM SITE CONTRACTOR TO
CONFIRM MIX AVAILABILITY.
120-250mm LENGTH x 3 BAND WIDTHS x
APPROX. 100mm DEPTH.
BAND 1 80-100mm WIDTH
BAND 2 101-115mm WIDTH
BAND 3 116-125mm WIDTH

ROW WIDTH BANDS CONTINUE THROUGH ROUGH
AND SAWN TOP RECLAIMED SETTS

NOTE:
RECLAIMED GRANITE BANDS ARE NOT
TO BE POSITIONED ON A REPEATING
PATTERN.



RECLAIMED ROUGH TOP GRANITE SETTS
80-125mm WIDE x 120 - 250mm LONG x 100 DEEP

10-15mm MORTAR JOINT COLOURED TO MATCH PAVING

RECLAIMED SAWN TOP GRANITE SETTS
80-125mm WIDE x 120 - 250mm LONG x 100 DEEP

40mm MORTAR BED

SUB BASE AND PAVING BUILD UP TO ENGINEERS
DETAIL AND SPECIFICATION

DETAIL H06b - SCALE 1:10 @ A3
SECTION THROUGH RECLAIMED GRANITE SETTS

LOCATION OF PAVING:
Treepits to Handyside & Hodder Street
Ring around GH8
Below Cycle Stands

All dimensions to be verified on site. Figured dimensions to take precedence to those scaled. Any areas indicated on this drawing are for guidance only, no responsibility is taken for their accuracy.

This drawing is the property of Applied Landscape Design Limited. Copyright is reserved by them and the drawing is issued on the condition that it is not copied, reproduced, retained or disclosed to any unauthorized person, either wholly or in part without the written consent in writing of Applied Landscapes.

© 2015 Applied Landscape Design Limited. All rights reserved.

CDM/H&S:

The works illustrated on this drawing have been reviewed against the Design CDM Risk Register and Appointed Roles are noted as:

Construction:

- Handling heavy materials / large pieces of stone
- Working adjacent to structures
- Working adjacent to existing structures (Close Holder 8)

Maintenance:

Demolition:

NOTES / KEY:

REFERENCE DRAWINGS/DOCUMENTS

REVISIONS

C01	First Issue for Construction	28.05.15
P01	Information	27.03.15

no.	Issued	date
-----	--------	------

CLIENT:



LANDSCAPE ARCHITECT:

The Threshing Barn
Bignell Park Barns
Chesherton, Nr. Bicester
Oxfordshire, OX26 1TD
Tel: 01869 249776
Email: mail@appliedlandscape.co.uk



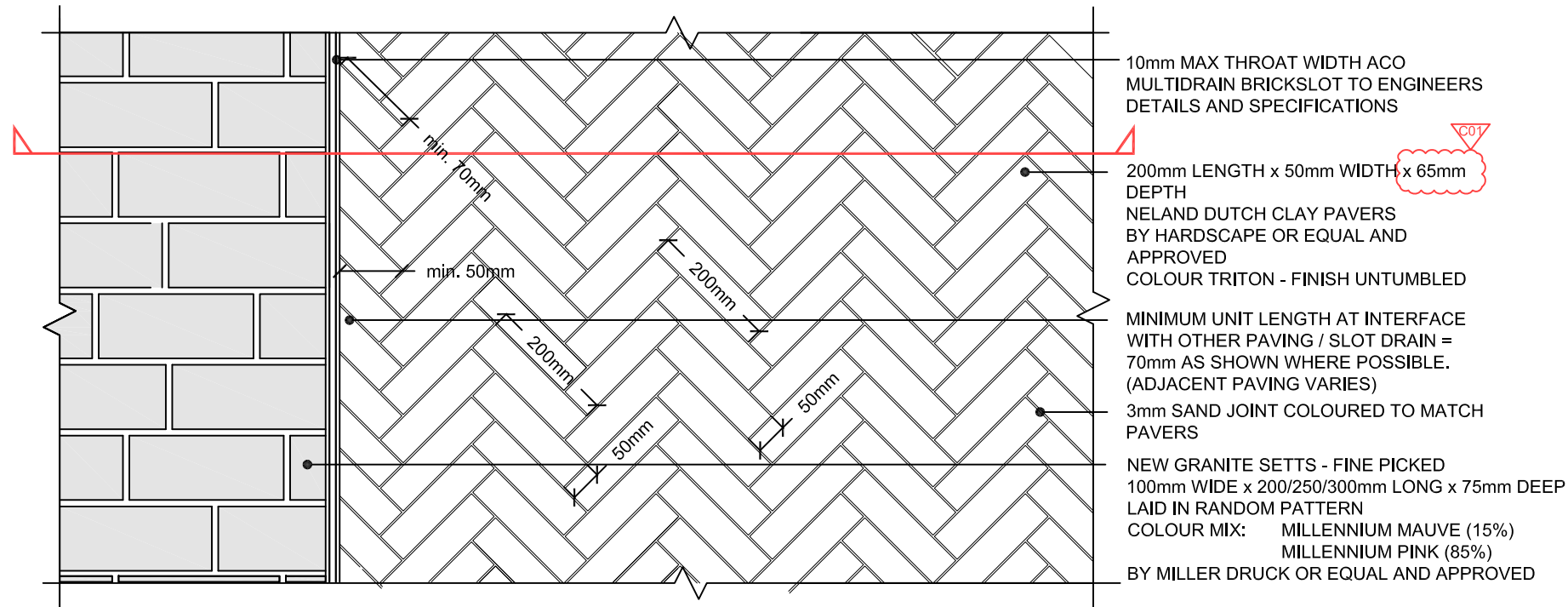
PROJECT:

WESTERN GOODS YARD
KINGS CROSS CENTRAL

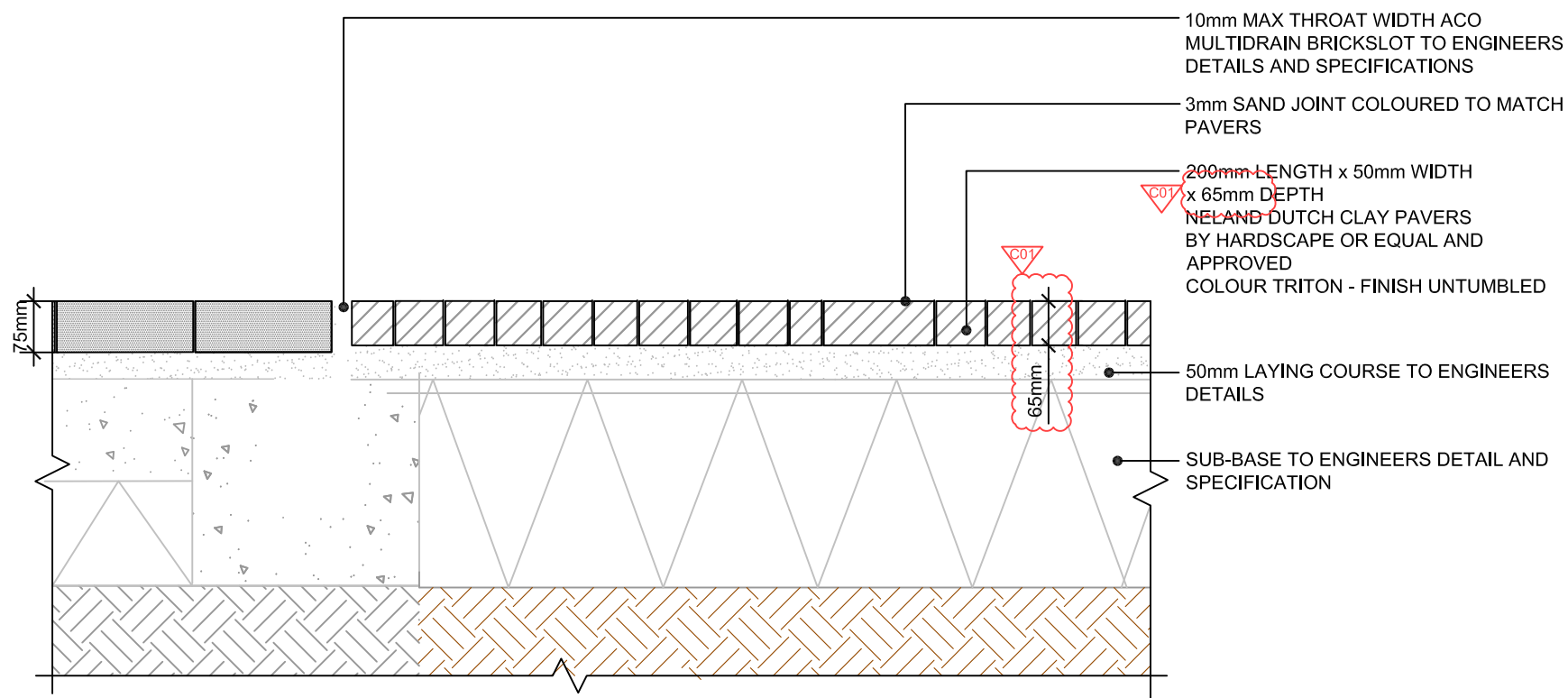
DRAWING TITLE:

WGTY TYPICAL DETAILS
PAVING PATTERN AND SECTION
RECLAIMED GRANITE SETTS

drawn:	scale:	
PU	1:10 @ A3	
checked:	status:	
CW	Construction	
date:	xref file ref:	
16.02.2015	ALD653_LDbase	
PROJECT NO.	DRAWING NUMBER:	REVISION:
ALD653	LD706	C01



DETAIL 07a - PLAN LAYOUT OF DUTCH CLAY PAVIORS
SCALE 1:10 @ A3



DETAIL 07b - SECTION THROUGH DUTCH CLAY PAVIORS
SCALE 1:10 @ A3

LOCATION OF PAVING:
Canal Reach

All dimensions to be verified on site. Figured dimensions to take precedence to those scaled. Any areas indicated on this drawing are for guidance only, no responsibility is taken for their accuracy.
The drawing is the property of Applied Landscape Design Limited. Copyright is reserved by them and the drawing is issued on the condition that it is not copied, reproduced, retained or disclosed to any unauthorized person, either wholly or in part without the written consent in writing of Applied Landscapes.

© 2015 Applied Landscape Design Limited. All rights reserved.

CDM/H&S:
The works illustrated on this drawing have been reviewed against the Design CDM Risk Register and significant risks are noted as:
Construction:
• Handling heavy materials / large pieces of stone
• Working adjacent to structures
• Working adjacent to existing structures (Gas Holder 8)
Maintenance:
Demolition:

NOTES / KEY:
As clay pavers are jointed in sand, the adjacent slot drain has a slot shown to the surface (In order to retain the jointing sand and thereby allow the clay pavers to be held tight)

REFERENCE DRAWINGS/DOCUMENTS

ALD653_HL110	WGTY / GH8 / P1 / T1 / Handyside Street Hard Landscape Key
ALD653_HL111 - HL115	Hard Landscape Layouts Sheets 1 - 5

REVISIONS

C01	First Issue for Construction Depth of Clay Pavers amended	28.05.15
P01	First Issue for Information	27.03.15

no. Issued date

CLIENT:

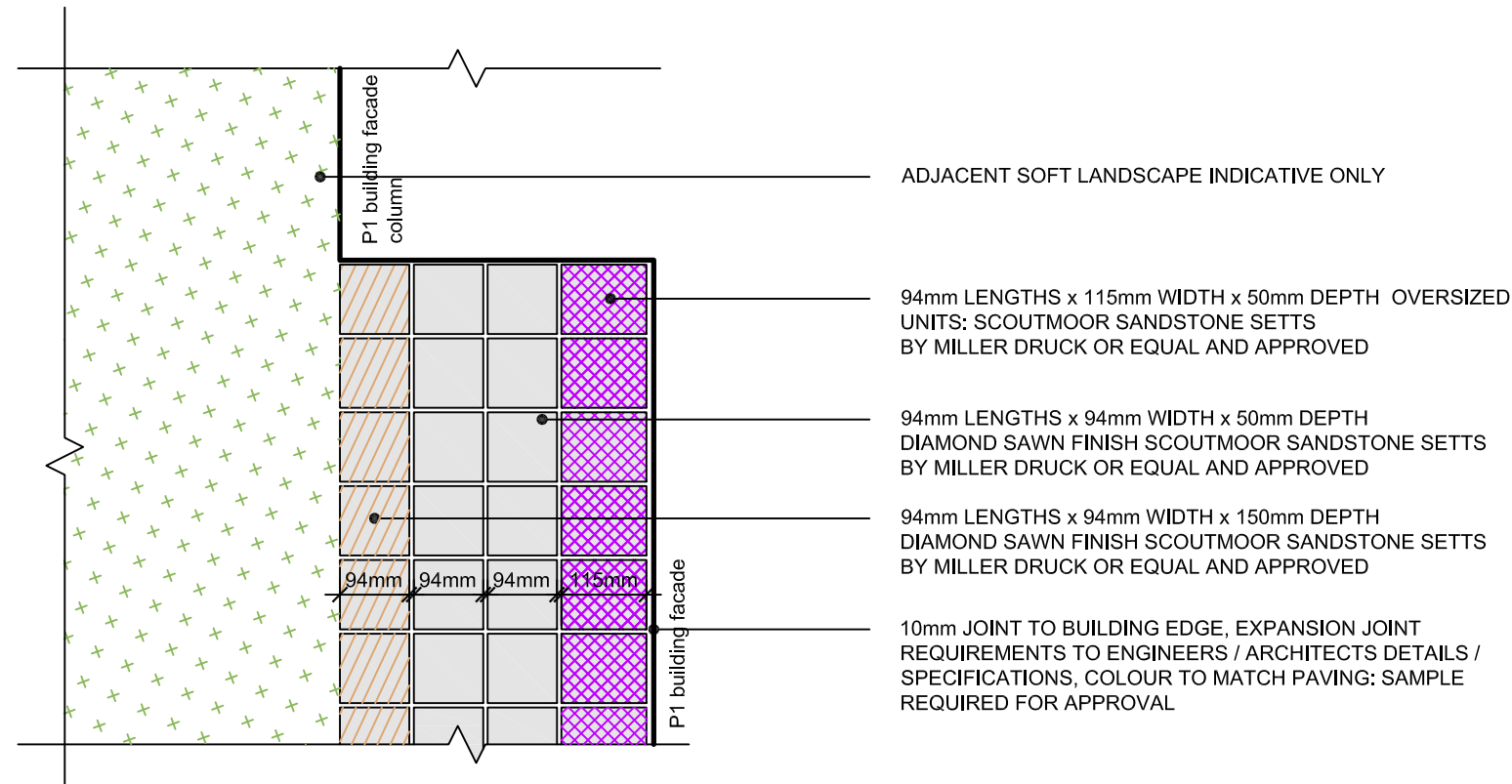

LANDSCAPE ARCHITECT:
The Threshing Barn
Bignell Park Barns
Chesherton, Nr. Bicester
Oxfordshire, OX26 1TD
Tel: 01869 249776
Email: mail@appliedlandscape.co.uk


PROJECT:
WESTERN GOODS YARD
KINGS CROSS CENTRAL

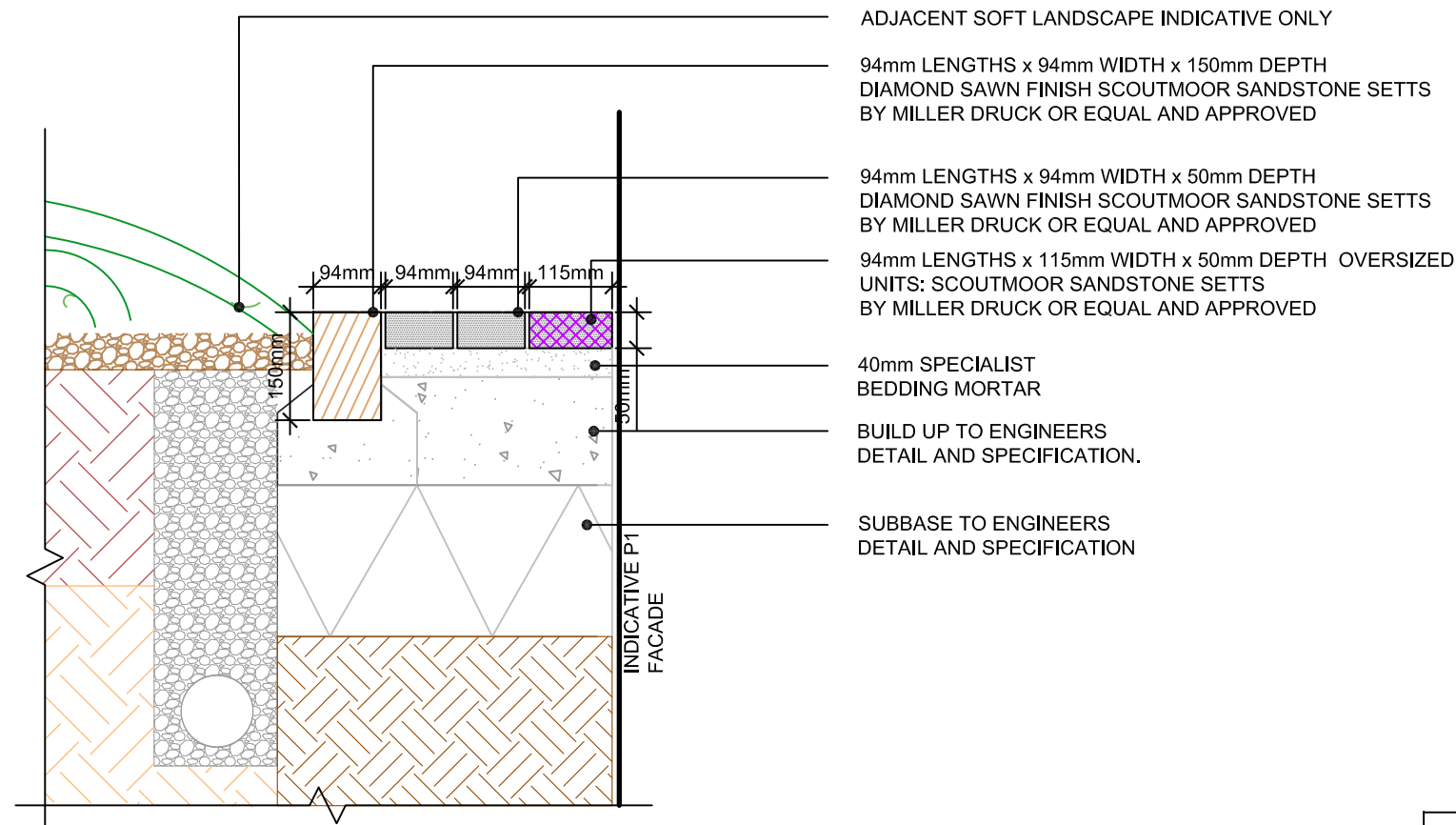
DRAWING TITLE:
WGTY TYPICAL DETAILS
PAVING PATTERN AND SECTION
DUTCH CLAY PAVIORS

drawn: PU	scale: 1:10 @ A3	
checked: CW	status: Construction	
date: 16.02.2015	xref file ref: ALD653_LDbase	
PROJECT NO. ALD653	DRAWING NUMBER: LD707	REVISION: C01

ORIGINAL A3 SIZE SHEET



DETAIL 08a - PLAN LAYOUT OF SANDSTONE SETTS AND SETT EDGE TO SOFT LANDSCAPE
SCALE 1:10 @ A3



DETAIL 08a - SECTION THROUGH SANDSTONE SETTS AND SETT EDGE TO SOFT LANDSCAPE
SCALE 1:10 @ A3

LOCATION OF PAVING:
To East of P1 Building North of
Playground

All dimensions to be verified on site. Figured dimensions to take precedence to those scaled. Any areas indicated on this drawing are for guidance only, no responsibility is taken for their accuracy.

The drawing is the property of Applied Landscape Design Limited. Copyright is reserved by them and the drawing is issued on the condition that it is not copied, reproduced, retained or disclosed to any unauthorized person, either wholly or in part without the written consent in writing of Applied Landscapes.

© 2015 Applied Landscape Design Limited. All rights reserved.

CDM/H&S:

The works illustrated on this drawing have been reviewed against the Design CDM Risk Register and significant risks are noted as:

Construction:

- Handling heavy materials / large pieces of stone
- Working adjacent to structures
- Working adjacent to existing structures (Gas Holder 8)

Maintenance:

Demolition:

NOTES / KEY:


REFERENCE DRAWINGS/DOCUMENTS

REVISIONS

C01	First Issue for Construction	29.05.15


no.	Issued	date
-----	--------	------

CLIENT:



LANDSCAPE ARCHITECT:

The Threshing Barn
Bignor Park Barns
Chesherton, Nr. Bicester
Oxfordshire, OX26 1TD
Tel: 01869 249776
Email: mail@appliedlandscape.co.uk



applied landscape design

PROJECT:

WESTERN GOODS YARD
KINGS CROSS CENTRAL

DRAWING TITLE:

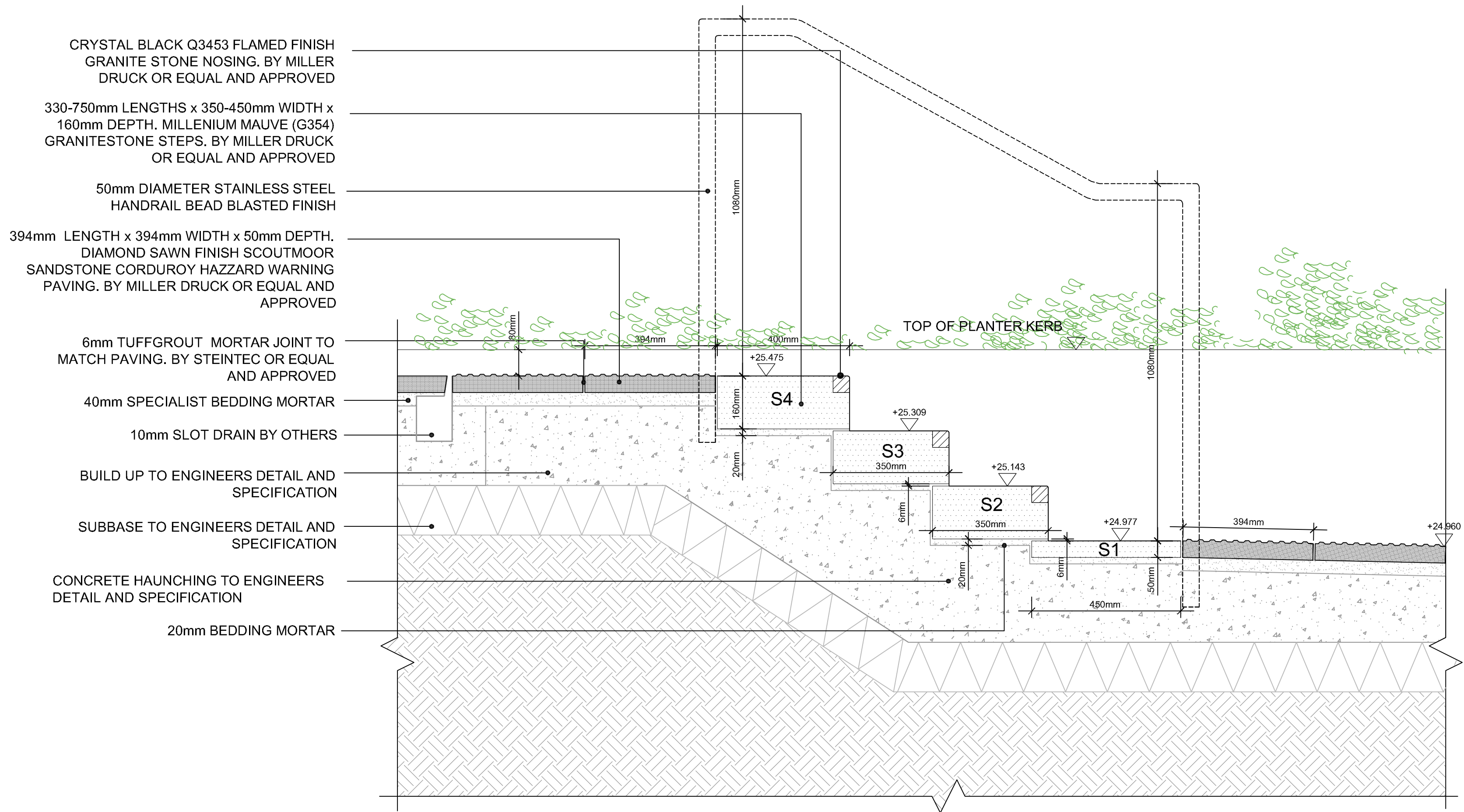
WGTY TYPICAL DETAILS
SANDSTONE SETTS ADJACENT
TO SOFT LANDSCAPE

drawn:	scale:	
CW	1:10 @ A3	
checked:	status:	
KmJ	Construction	
date:	xref file ref:	
29.05.2015	ALD653_LDbase	
PROJECT NO.	DRAWING NUMBER:	REVISION:
ALD653	LD708	C01

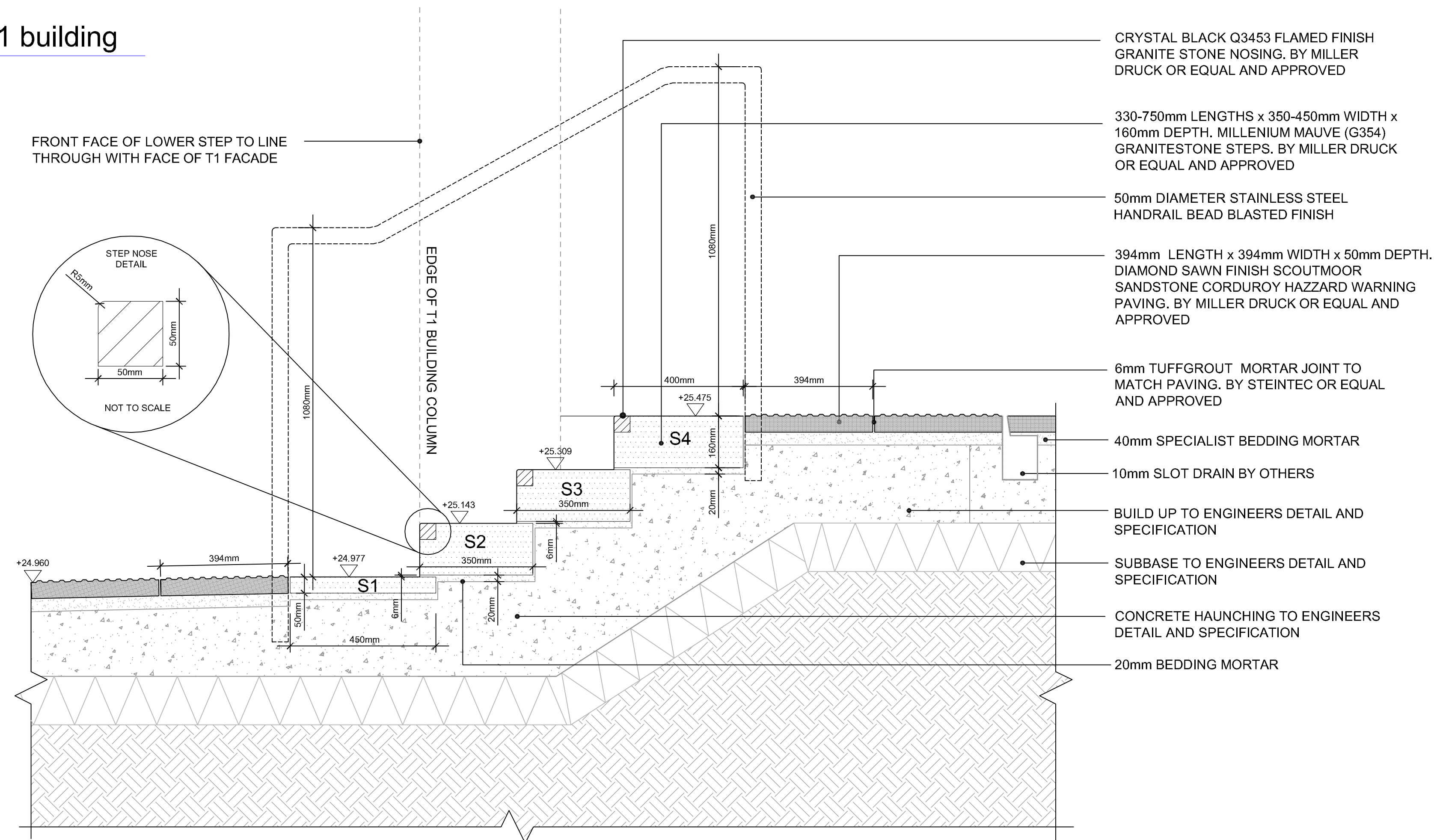
ORIGINAL A3 SIZE SHEET



APPENDIX B: CANAL REACH / PUBLIC REALM - STEP TYPICAL DETAILS



ST01 West elevation of Canal Reach steps adjacent to T1 building
LD860 1:10 @ A1



ST02 Section through Canal Reach steps adjacent to T1 building
LD860 1:10 @ A1

All dimensions to be verified on site. If found dimensions to take precedence to those scaled. Any areas indicated on this drawing are for guidance only, no responsibility is taken for their accuracy.

The drawing is the property of Applied Landscape Design Limited. Copyright is reserved by them and the drawing is issued on the condition that it is not copied, reproduced, retained or disclosed to any unauthorized person, either wholly or in part without the written consent in writing of Applied Landscapes.

© 2015 Applied Landscape Design Limited. All rights reserved.

CDM/H&S:

The works illustrated on this drawing have been reviewed against the Design CDM Risk Register and significant risks are noted as:

Construction:

- Handling heavy materials / large pieces of stone
- Working at height / risk of falls
- Working adjacent to existing structures (P1 & T1 buildings)

NOTES / KEY:

REFERENCE DRAWINGS/DOCUMENTS

ALD653_HL111 & HL114	WGY/CANAL REACH HARD LANDSCAPE LAYOUT

REVISIONS

P01	First issue for information	16.03.15

no. issued date

CLIENT:



LANDSCAPE ARCHITECT:

The Threshing Barn
Bignell Park Barns
Chesham, Nr. Bicester
Oxfordshire OX26 1TD

Tel: 01865 249776
Email: mail@appliedlandscape.co.uk



PROJECT:

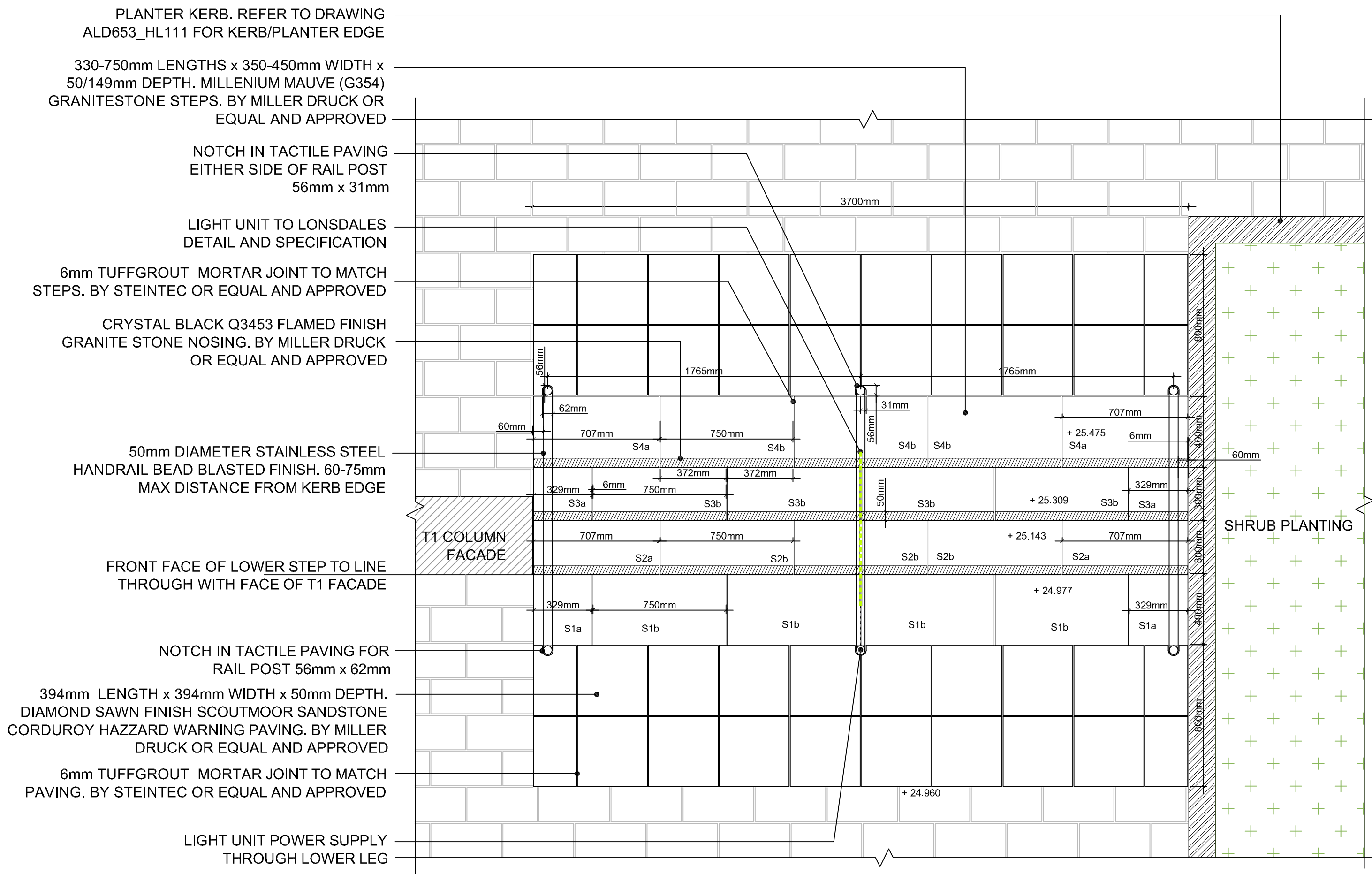
WESTERN GOODS YARD
KINGS CROSS CENTRAL

DRAWING TITLE:

WGY / CANAL REACH
STEP ELEVATIONS

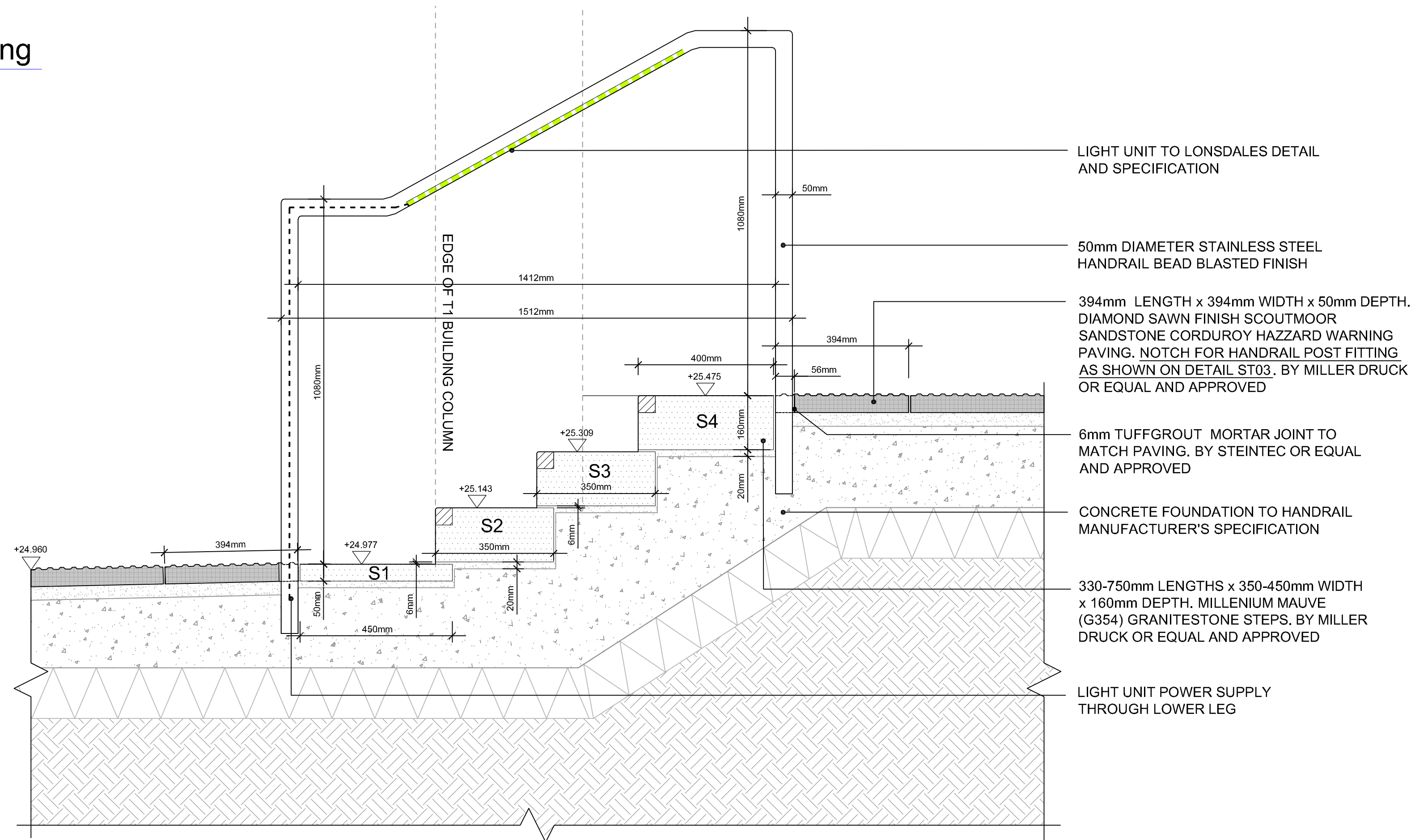
drawn:	scale:	
AF	1:10 @ A1	
checked:	status:	
KmJ	Information	
date:	xref file ref	
06.03.2015	ALD653_LDbase	
PROJECT NO.	DRAWING NUMBER:	REVISION:
ALD653	LD860	P01

ORIGINAL A1 SIZE SHEET



ST04
LD861

Detail Plan Layout: Canal Reach steps adjacent to T1 building
1:20 @ A1



ST03
LD861

Section through Canal Reach steps adjacent to T1 building: HANDRAIL DETAIL
1:10 @ A1

All dimensions to be verified on site. Figure dimensions to take precedence to those scaled. Any areas indicated on this drawing are for guidance only, no responsibility is taken for their accuracy.

The drawing is the property of Applied Landscape Design Limited. Copyright is reserved by them and the drawing is issued on the condition that it is not copied, reproduced, retained or disclosed to any unauthorized person, either wholly or in part without the written consent in writing of Applied Landscapes.

© 2015 Applied Landscape Design Limited. All rights reserved.

CDM/H&S:

The works illustrated on this drawing have been reviewed against the Design CDM Risk Register and significant risks are noted as:

Construction:

- Handling heavy materials / large pieces of stone
- Working at height / risk of falls
- Working adjacent to existing structures (P1 & T1 buildings)

NOTES / KEY:

REFERENCE DRAWINGS/DOCUMENTS

ALD653_HL111 & HL114	WGY/CANAL REACH HARD LANDSCAPE LAYOUT
----------------------	---------------------------------------

REVISIONS

P01	First issue for information	16.03.15
-----	-----------------------------	----------

no.	issued	date
-----	--------	------

CLIENT:



LANDSCAPE ARCHITECT:

The Threshing Barn
Bignell Park Barrs
Cheriton, Nr. Bicester
Oxfordshire, OX26 1TD

Tel: 01869 249775
Email: mail@appliedlandscape.co.uk



PROJECT:

WESTERN GOODS YARD
KINGS CROSS CENTRAL

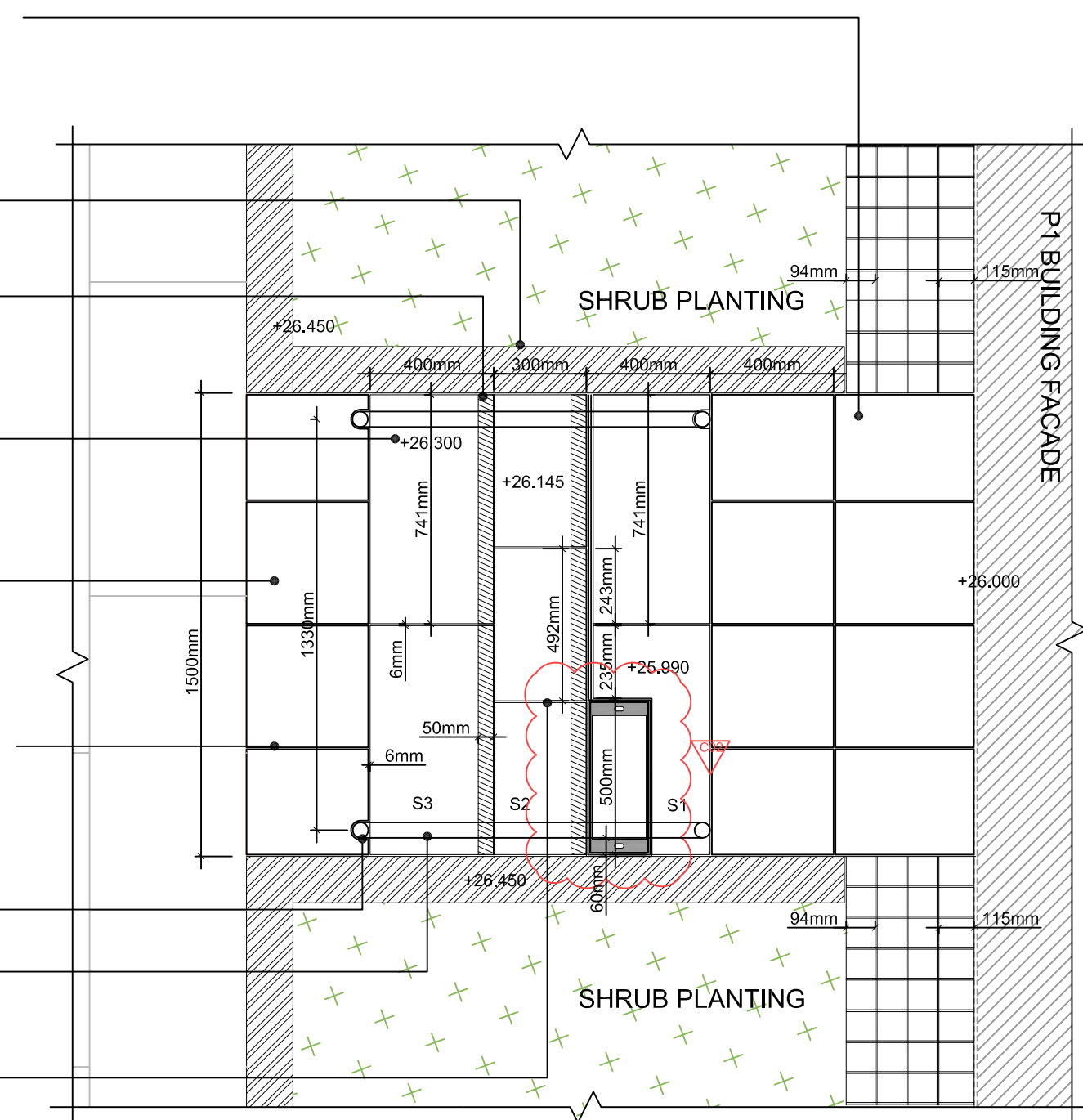
DRAWING TITLE:

WGY / CANAL REACH
STEPS PLAN & HANDRAIL DETAIL

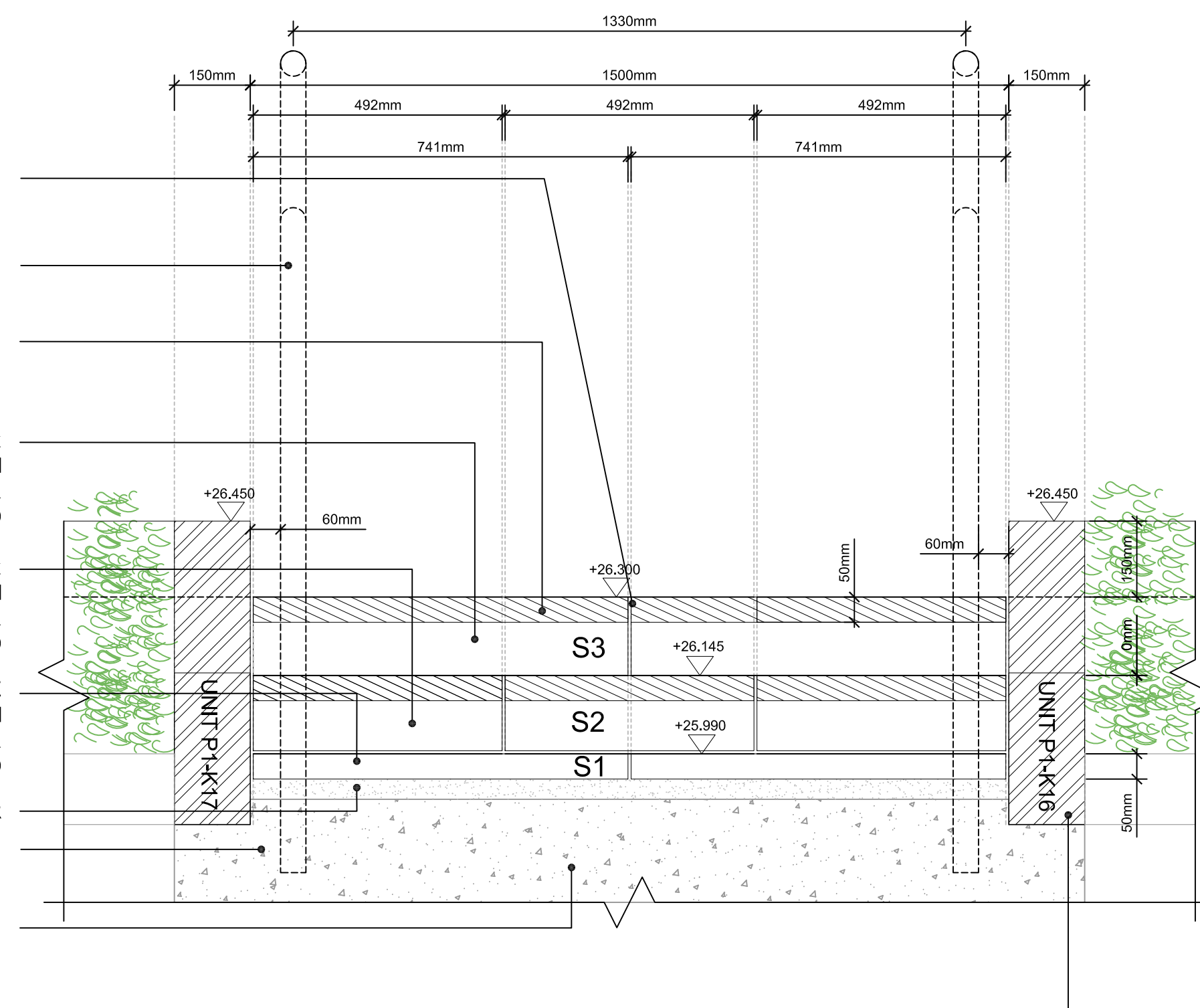
drawn: AF	scale: AS SHOWN @ A1
checked: KmJ	status: Information
date: 06.03.2015	xref file ref: ALD653_LDbase
PROJECT NO. ALD653	DRAWING NUMBER: LD861
	REVISION: P01

ORIGINAL A1 SIZE SHEET

6mm TUFFGROUT MORTAR JOINT TO MATCH —
STEPS, BY STEINTEC OR EQUAL AND APPROVED

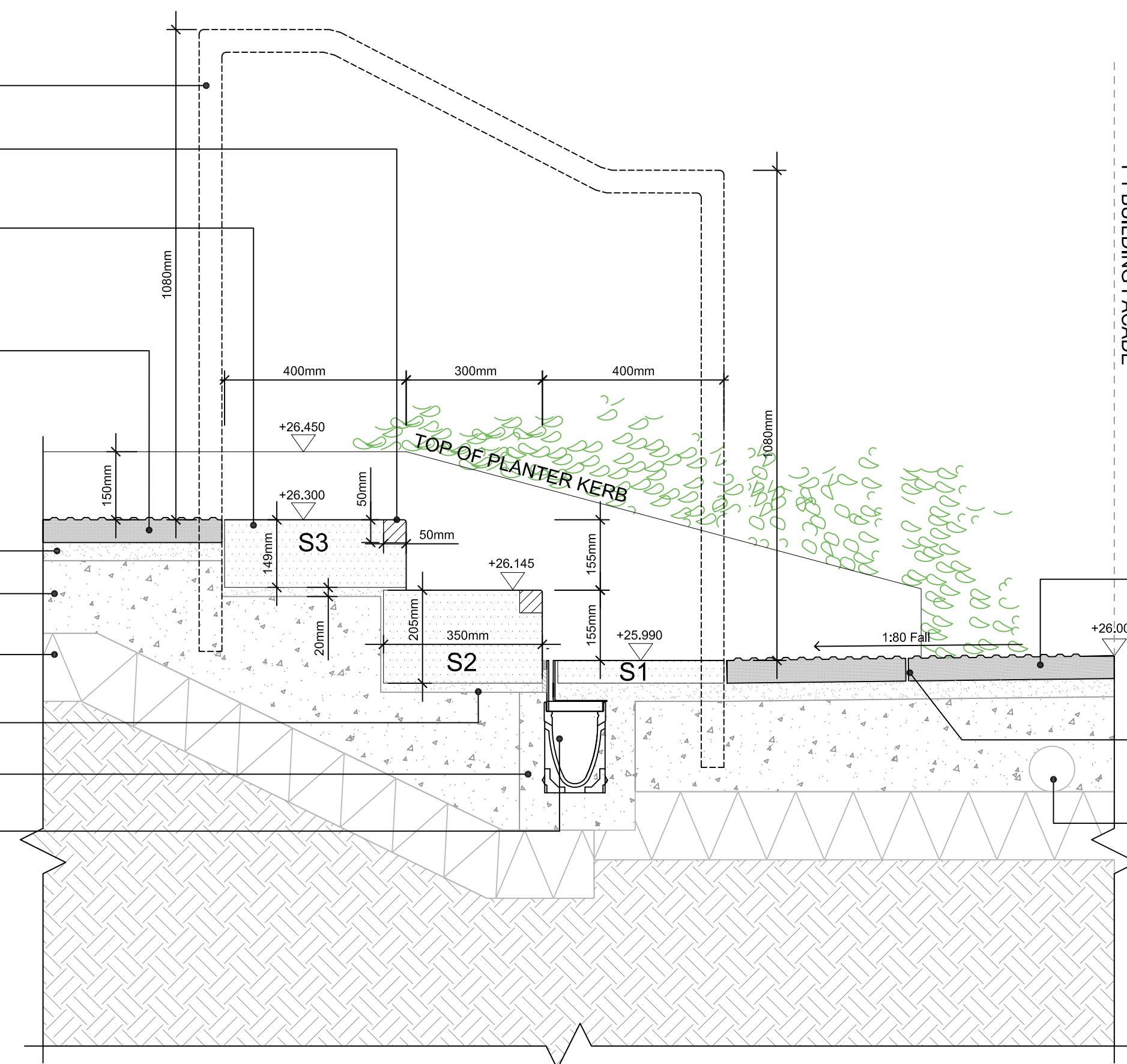


150mm PLANTER KERB. REFER TO DRAWING
ALD653 HL111 FOR KERB/PLANTER EDGE



NOTES / KEY:

6mm THROAT WIDTH STAINLESS STEEL SLOT DRAIN TO ENGINEERS DETAILS AND SPECIFICATIONS



— LAND DRAIN TO ENGINEERS DETAIL AND SPECIFICATION

DRAWING NUMBER:	REVISION:
LD862	C02