

WESTERN GOODS YARD

KINGS CROSS CENTRAL

Applied Landscape Design

Balustrades Tracker to Discharge:

Reserved matter conditions 2 (c)
Gas Holder Park & Canal Reach
Kings Cross Central 2014/3681/P

| | |
|----------------------------|--------------|
| ALD Project Ref: | 653 / 14 |
| Document Ref: | ALD653_RP904 |
| Document Revision: | P01 |
| Current Issue Date: | 17.07.2015 |
| ALD working date: | 11.03.2015 |
| Reason For Issue: | Approval |

Prepared By: Applied Landscape Design Ltd
Landscape Architect

Client: Carillion



INTRODUCTION

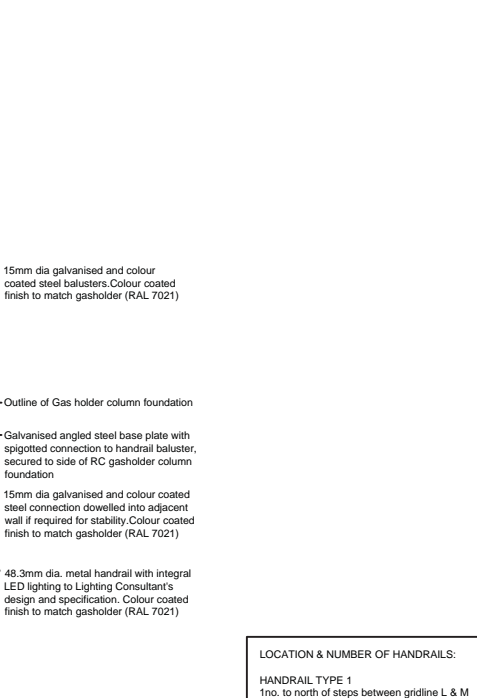
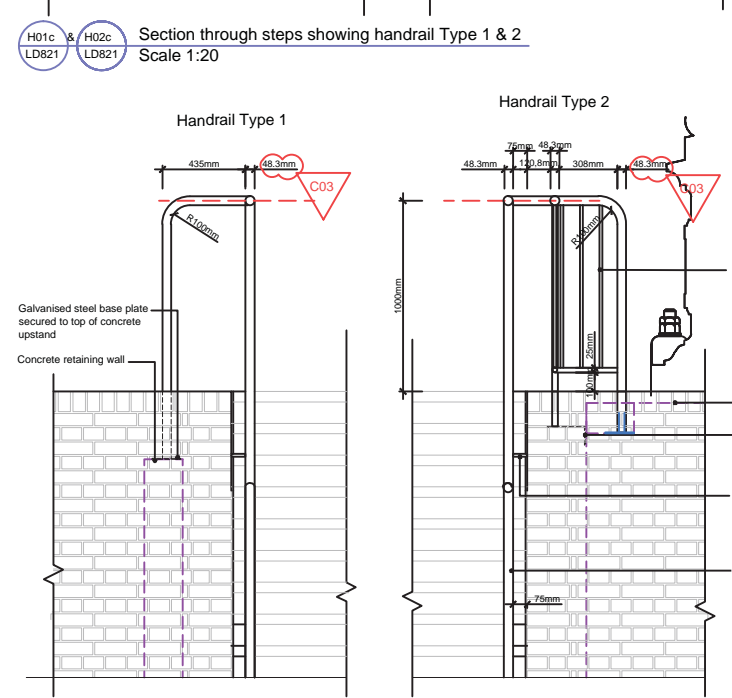
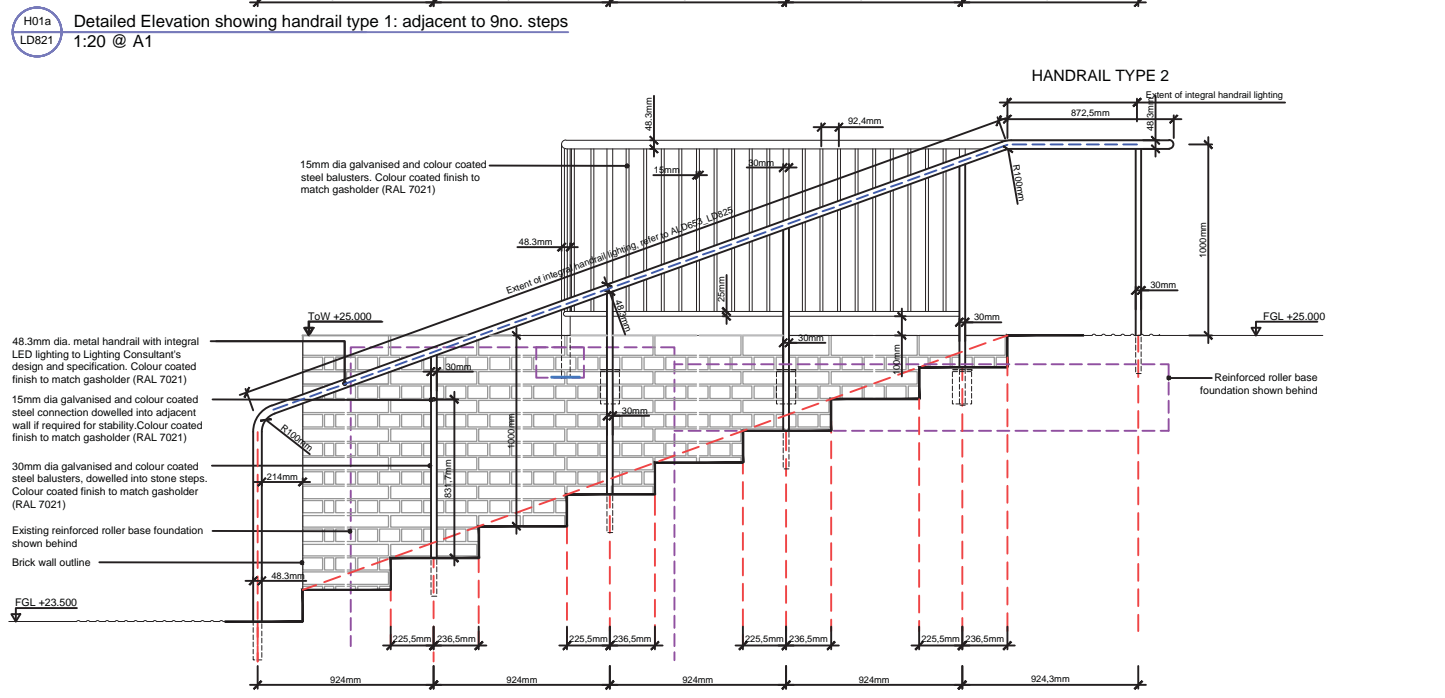
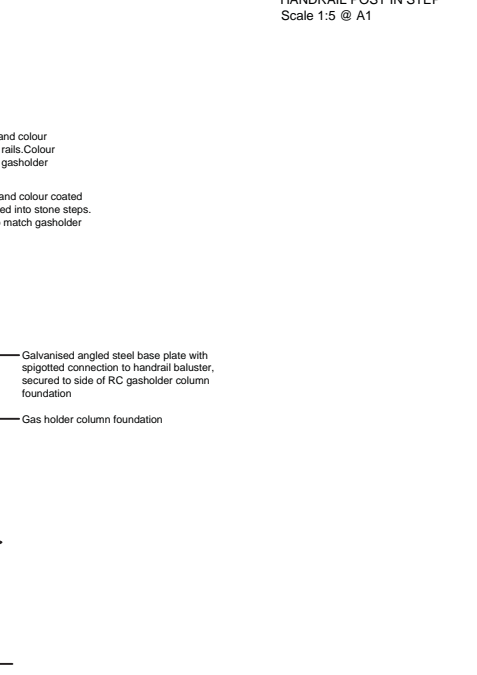
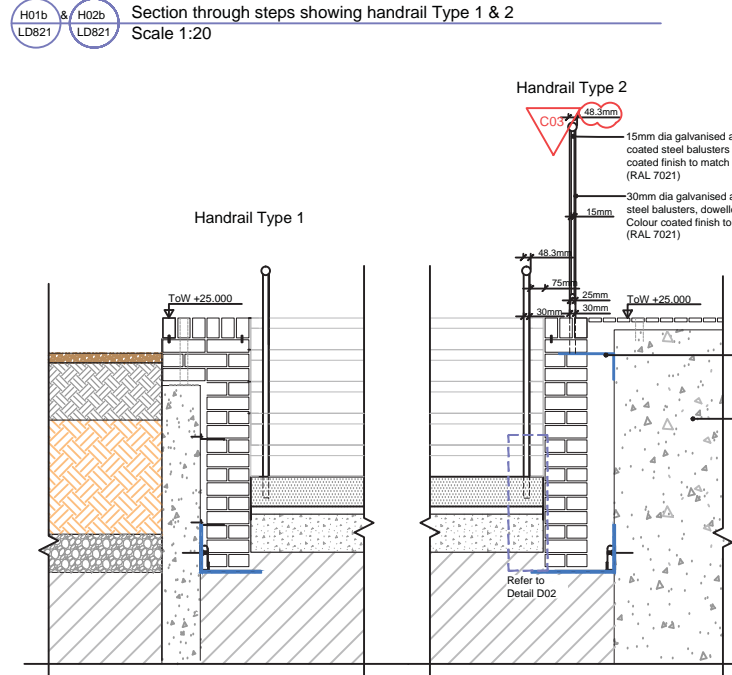
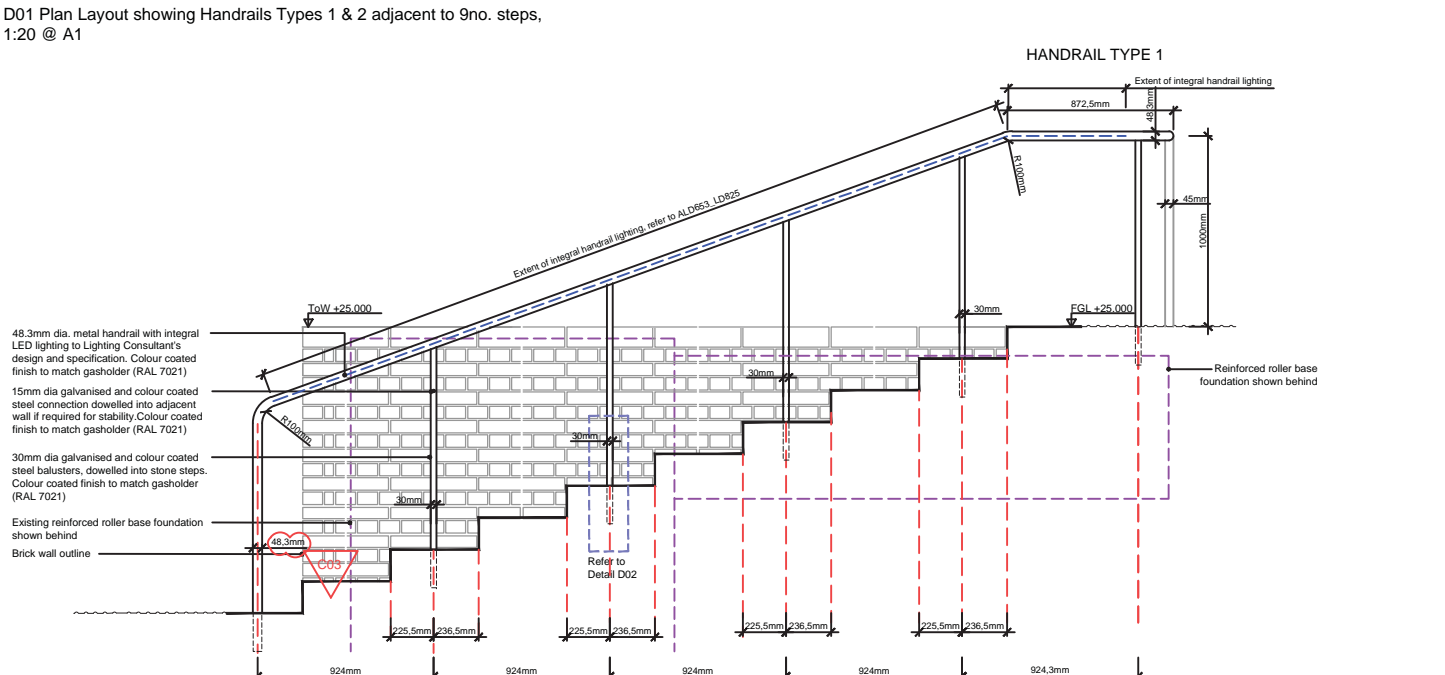
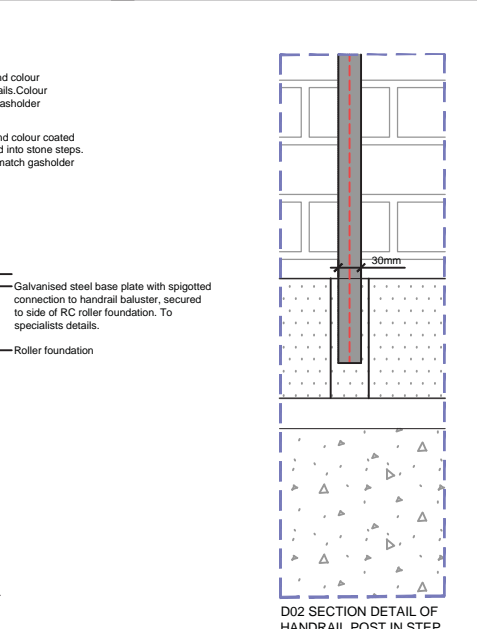
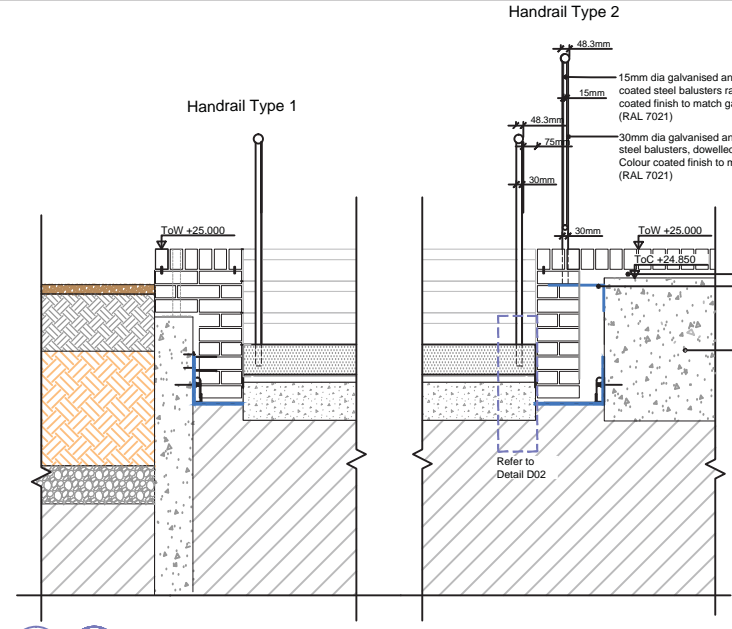
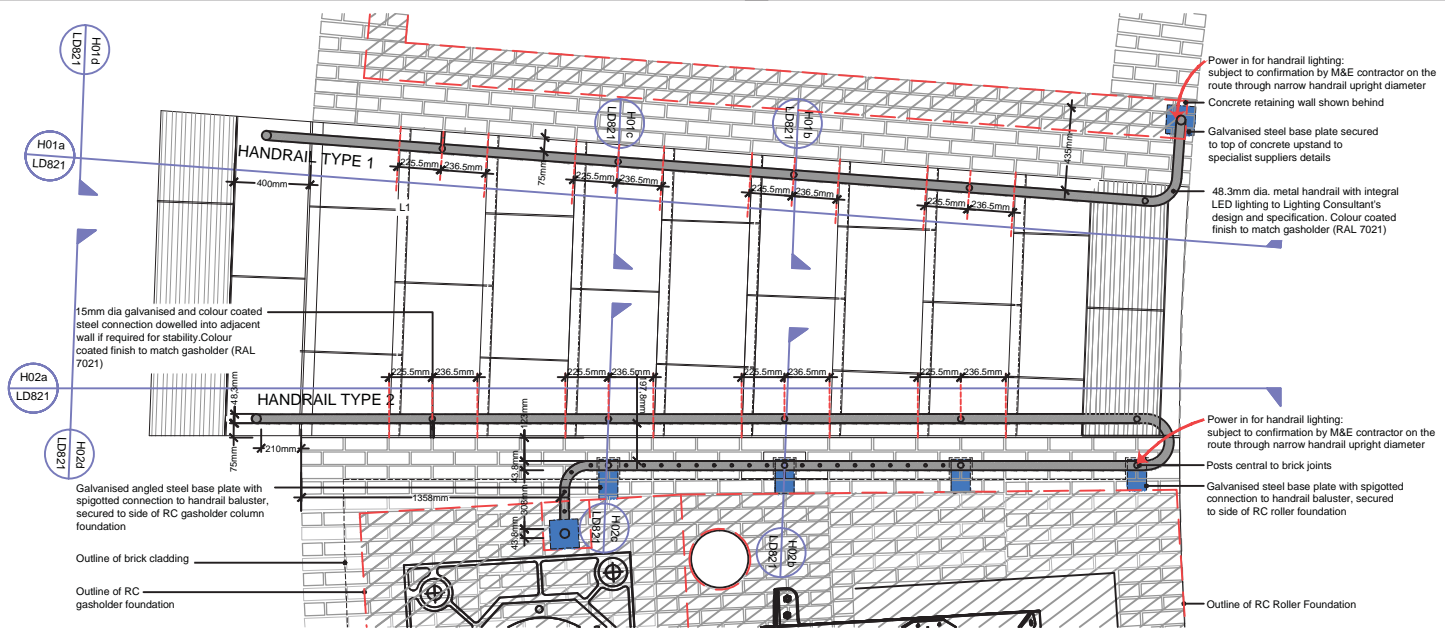
This document has been prepared to discharge the following planning conditions as highlighted below:

Under application 2014/3681/P, Gas Holder Park & Canal Reach, Kings Cross Central

| CONDITION | DETAILS OF CONDITION | NOTES |
|------------------------------------|--|-------------------------------|
| 1 | Prior to commencement on the relevant part of the development hereby approved details of all external lighting to include location, design, specification, fittings and fixtures (including means of reducing light spillage) shall be submitted to and approved in writing by the local planning authority. | Refer to ALD653_RP901 |
| 2 Approval of material finishes | Prior to commencement on the relevant part of the development hereby approved the following details shall be submitted and approved in writing by the local planning authority: | Refer to ALD653_RP902 - RP904 |
| 2a Paving approval | Detailed drawings and / or samples as appropriate of all paving materials and finishes (including but not limited to resin bonded gravel, sandstone paving, dutch clay pavers, granite setts, granite paving, natural stone steps, bricks) and other hard landscape surface treatments. The material under this condition shall be displayed in the form of a samples board to be retained on site for the duration of the relevant works. | Refer to ALD653_RP902 |
| 2b | Detailed drawings of all planters, benches and seats | Refer to ALD653_RP903 |
| 2c | Detailed drawings and / or samples of materials as appropriate of any balustrading | Refer to information enclosed |

NOTE: Refer to drawing ALD653_GA002 for public realm hard landscape and lighting layout

APPENDIX A: GAS HOLDER 8 HANDRAILS / BALUSTRADES



All dimensions to be verified on site. Figured dimensions to take precedence to those scaled. Any areas indicated on this drawing are for guidance only, no responsibility is taken for their accuracy.

The drawing is the property of Applied Landscape Design Limited. Copyright is reserved by them and the drawing is issued on the condition that it is not copied, reproduced, reprinted or disclosed to any unauthorized person, either wholly or in part without the written consent in writing of Applied Landscape.

© 2015 Applied Landscape Design Limited. All rights reserved.

CDM/H&S:

The works illustrated on this drawing have been reviewed against the Design CDM Risk Register and significant risks are noted as:

Construction:

- Handling heavy materials / large pieces of stone
- Working at height / risk of falls
- Working adjacent to existing structures (Gas Holder 8)

Maintenance:

- Maintaining light bulb fittings

Demolition:

NOTES / KEY:

LOCATION PLAN:

REFERENCE DRAWINGS/DOCUMENTS

| | |
|----------------------|--|
| ALD653_LD825 | Gas Holder 8 Handrail Lighting Details |
| ALD653_LD821 - LD824 | Gas Holder 8 Handrail Details |

REVISIONS

| no. | issued | date |
|-----|--|------------|
| C03 | For Construction. Handrail diameter amended to 48.3mm | 25.06.2015 |
| C02 | For Construction. Handrails amended following comments | 15.06.2015 |
| C01 | First Issue for Construction | 03.06.2015 |

CLIENT:

LANDSCAPE ARCHITECT:

The Threshing Barn
Bignell Park Barns
Chesterton, Nr. Bicester
Oxfordshire, OX26 1TD
Tel: 01869 249776
Email: mail@appliedlandscape.co.uk

PROJECT:

**WESTERN GOODS YARD
KINGS CROSS CENTRAL**

DRAWING TITLE:

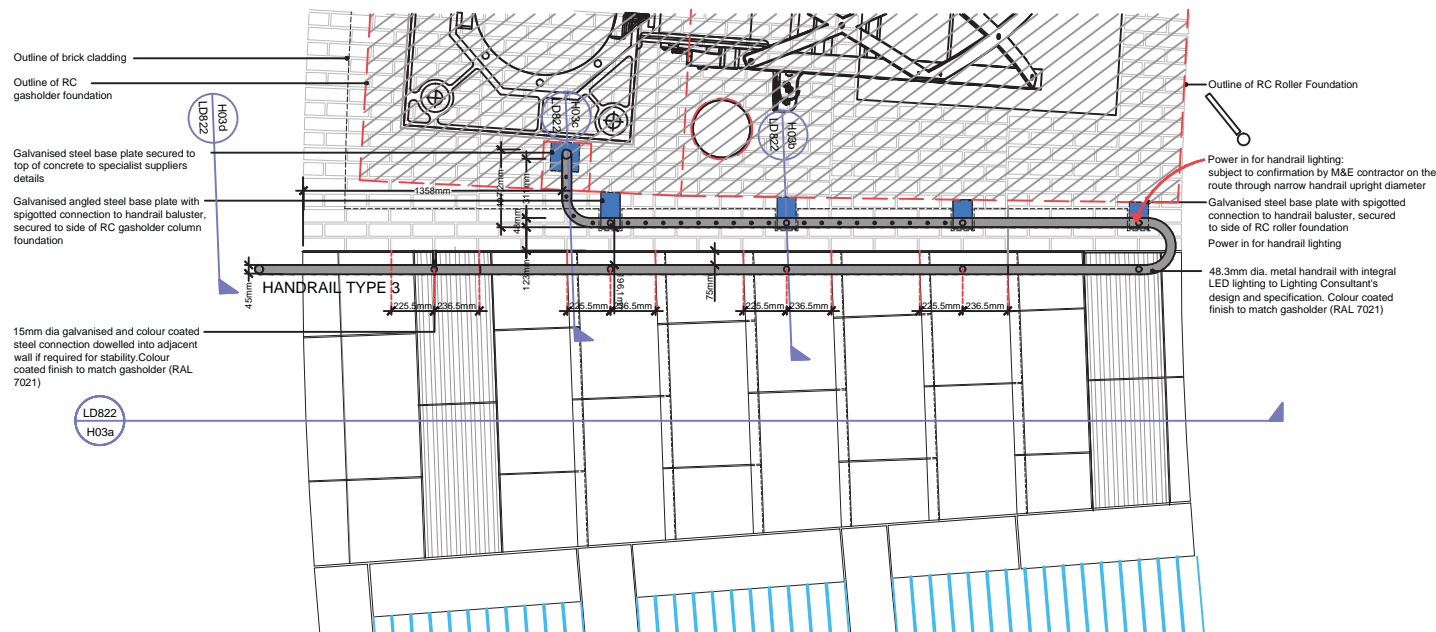
**GAS HOLDER 8 HANDRAIL DETAILS
HANDRAIL TYPES 1 & 2
ADJACENT TO 9NO. STEPS**

| | |
|-----------------------|---------------------------------|
| drawn: CW | scale: AS @ A1 |
| checked: KmJ | status: Construction |
| date: 17.02.2015 | xref file ref: ALD653_LDbase |
| PROJECT NO. ALD653 | DRAWING NUMBER: LD821 |
| | REVISION: C03 |

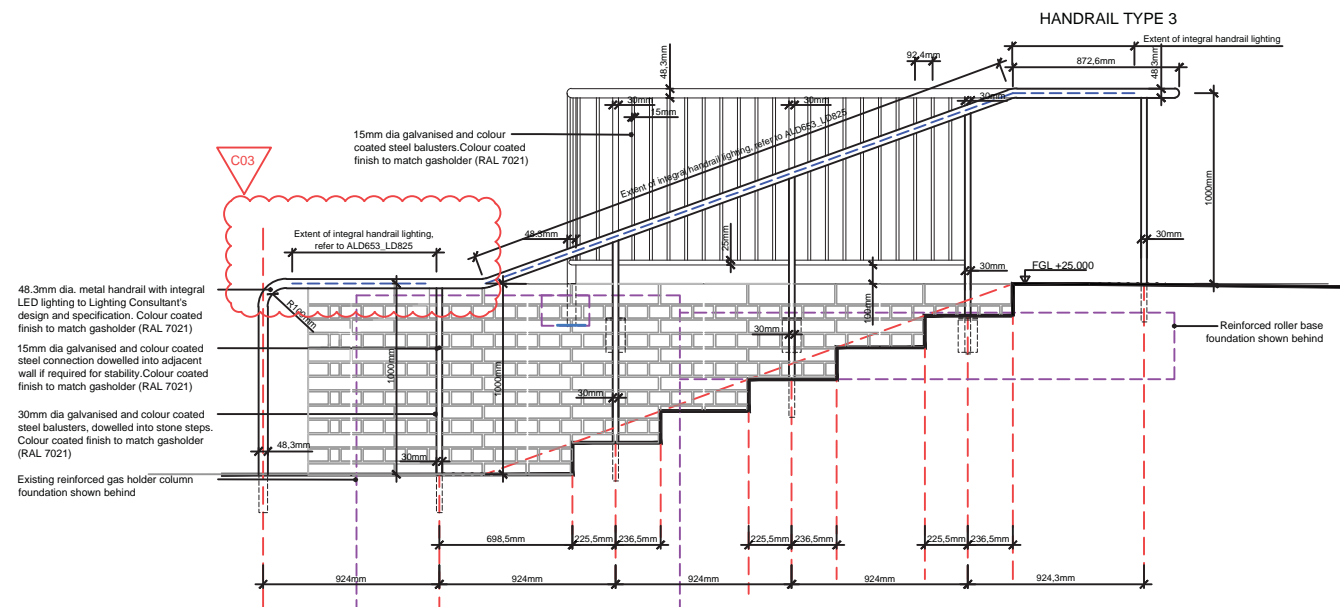
LOCATION & NUMBER OF HANDRAILS:

HANDRAIL TYPE 1
1no. to north of steps between gridline L & M

HANDRAIL TYPE 2
2no. total
1no. to south of steps between gridline L & M
1no. to east of steps between gridline I & J

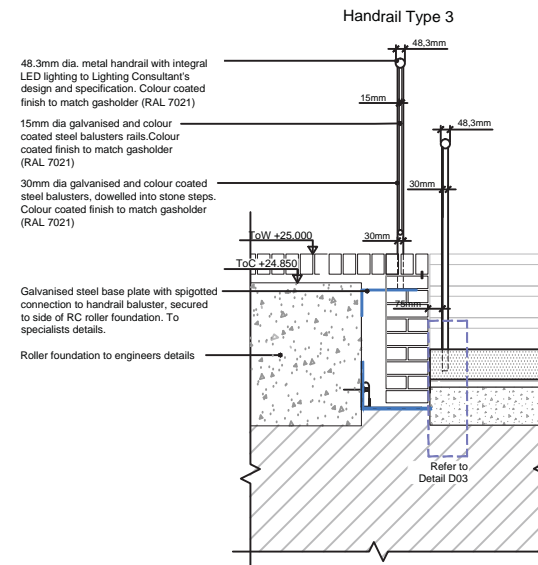


D03 Plan Layout showing Handrails Type 3 adjacent to 6no. steps, 1:20 @ A1

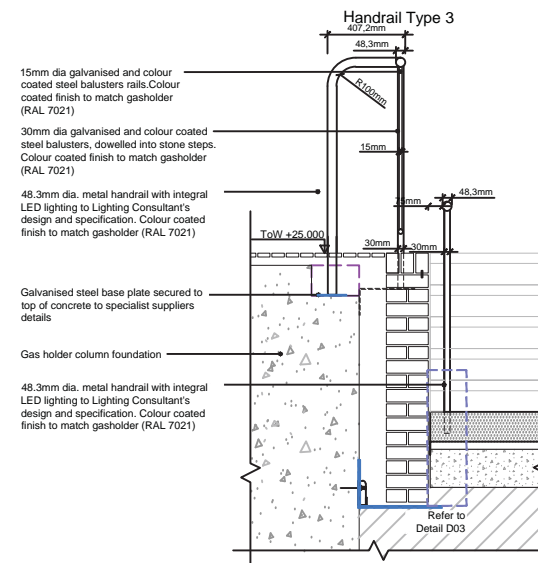


H03a Detailed Elevation showing handrail Type 3: adjacent to 6no. steps, 1:20 @ A1

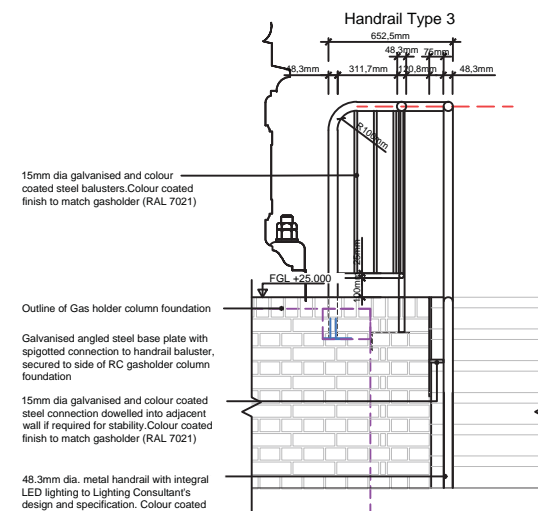
LOCATION & NUMBER OF HANDRAILS:
HANDRAIL TYPE 3
1no. to west of steps between gridline H & G



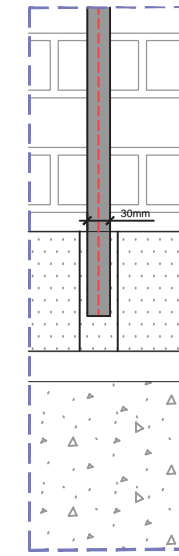
H03b Section through steps showing handrail Type 3 Scale 1:20



H03c Section through steps showing handrail Type 3 Scale 1:20



H03d Section through steps showing handrail Type 3 Scale 1:20



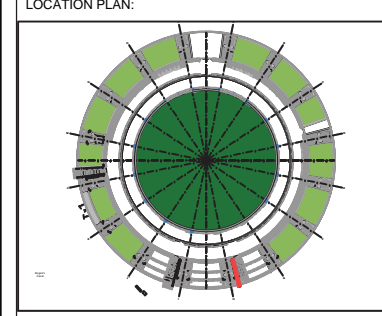
D02 SECTION DETAIL OF HANDRAIL POST IN STEP Scale 1:5 @ A1

All dimensions to be verified on site. Figured dimensions take precedence to those scaled. Any areas indicated on this drawing are for guidance only, no responsibility is taken for their accuracy.
The drawing is the property of Applied Landscape Design Limited. Copyright is reserved by them and the drawing is issued on the condition that it is not copied, reproduced, resented or disclosed to any unauthorized person, either wholly or in part without the written consent in writing of Applied Landscape.

© 2015 Applied Landscape Design Limited. All rights reserved.

CDM:H&S:
The works illustrated on this drawing have been reviewed against the Design CDM Risk Register and significant risks are noted as:
Construction:
• Handling heavy materials / large pieces of stone
• Working at height / risk of falls
• Working adjacent to existing structures (Gas Holder 8)
Maintenance:
• Maintaining light bulb fittings
Demolition:

NOTES / KEY:



REFERENCE DRAWINGS/DOCUMENTS

| | |
|--------------|--|
| ALD653_LD825 | Gas Holder 8 Handrail Lighting Details - LD826 |
| ALD653_LD821 | Gas Holder 8 Handrail Details - LD824 |

REVISIONS

| no. | issued | date |
|-----|---|------------|
| C02 | Issue for Construction, minor amendments following comments | 25.06.2015 |
| C01 | First issue for Construction | 15.06.2015 |

CLIENT:



LANDSCAPE ARCHITECT:
The Threshing Barn
Bignell Park Barns
Chesterton, Nr. Bicester
Oxfordshire, OX26 1TD
Tel: 01 869 249776
Email: mail@appliedlandscape.co.uk
ALD
applied landscape design

PROJECT:

**WESTERN GOODS YARD
KINGS CROSS CENTRAL**

DRAWING TITLE:

**GAS HOLDER 8 HANDRAIL DETAILS
HANDRAIL TYPE 3
ADJACENT TO 6NO. STEPS**

| | |
|-----------------------|---------------------------------|
| drawn: CW | scale: AS @ A1 |
| checked: KmJ | status: Construction |
| date: 12.06.2015 | xref file ref: ALD653_LDbase |
| PROJECT NO. ALD653 | DRAWING NUMBER: LD822 |
| | REVISION: C02 |

ORIGINAL A1 SIZE SHEET

All dimensions to be verified on site. Figured dimensions to take precedence to those scaled. Any areas indicated on this drawing are for guidance only, no responsibility is taken for their accuracy.
 The drawing is the property of Applied Landscape Design Limited. Copyright is reserved by them and the drawing is issued on the condition that it is not copied, reproduced, revised or disclosed to any unauthorized person, either wholly or in part without the written consent in writing of Applied Landscape Design Limited.

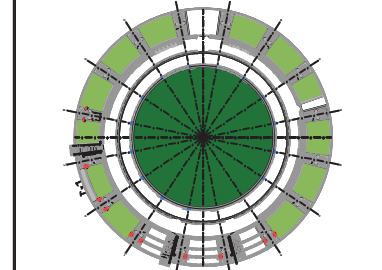
© 2015 Applied Landscape Design Limited. All rights reserved.

CDM/H&S:
 The works illustrated on this drawing have been reviewed against the Design CDM Risk Register and significant risks are noted as:

- Construction:
- Handling heavy materials / large pieces of stone
 - Working at height / risk of fall
 - Working adjacent to existing structures (Gas Holder 8)
- Maintenance:
- Maintaining light bulb fittings
- Demolition:

NOTES / KEY:

LOCATION PLAN:



REFERENCE DRAWINGS/DOCUMENTS

| | |
|----------------------|--|
| | Gas Holder 8 Handrail Lighting Details |
| ALD653_LD821 - LD824 | Gas Holder 8 Handrail Details |

REVISIONS

| no. | issued | date |
|-----|---|------------|
| C02 | Issue for Construction. Handrail diameter amended | 25.06.2015 |
| C01 | First issue for Construction | 15.06.2015 |

CLIENT:



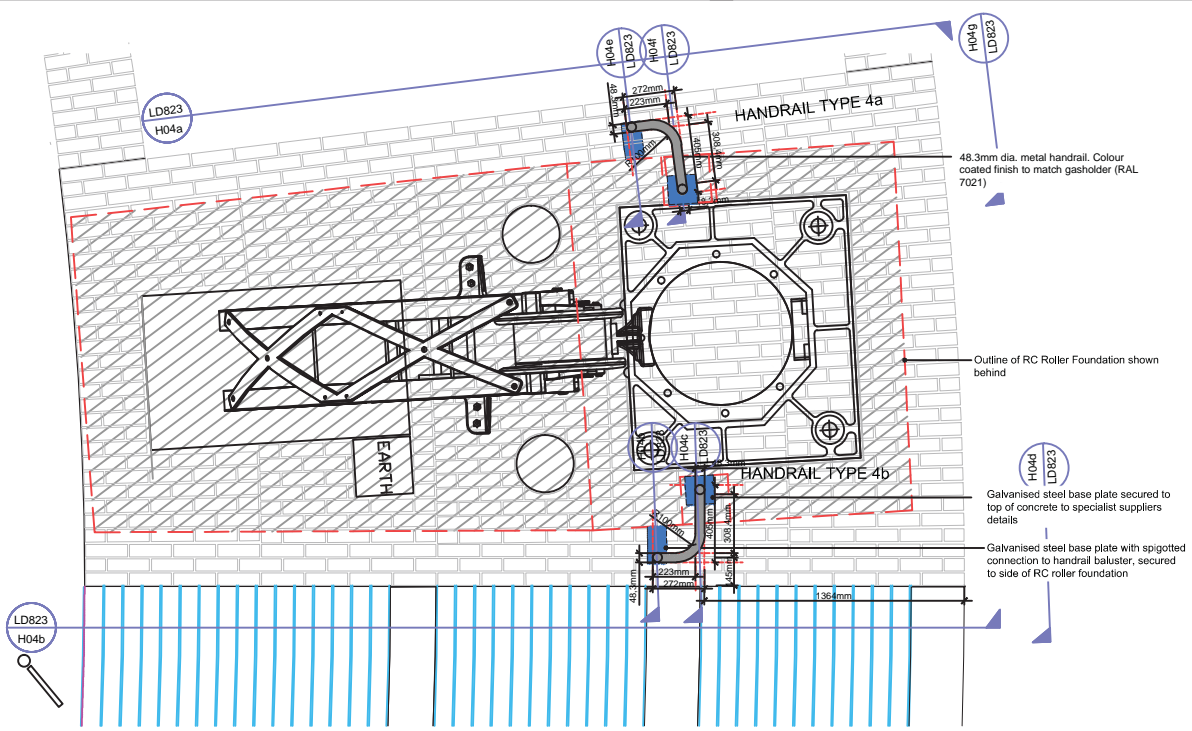
LANDSCAPE ARCHITECT:
 The Threshing Barn
 Bignell Park Barns
 Chesterton, Nr. Bicester
 Oxfordshire, OX26 1TD
 Tel: 01869 249776
 Email: mail@appliedlandscape.co.uk
ALD
 applied landscape design

PROJECT:
**WESTERN GOODS YARD
 KINGS CROSS CENTRAL**

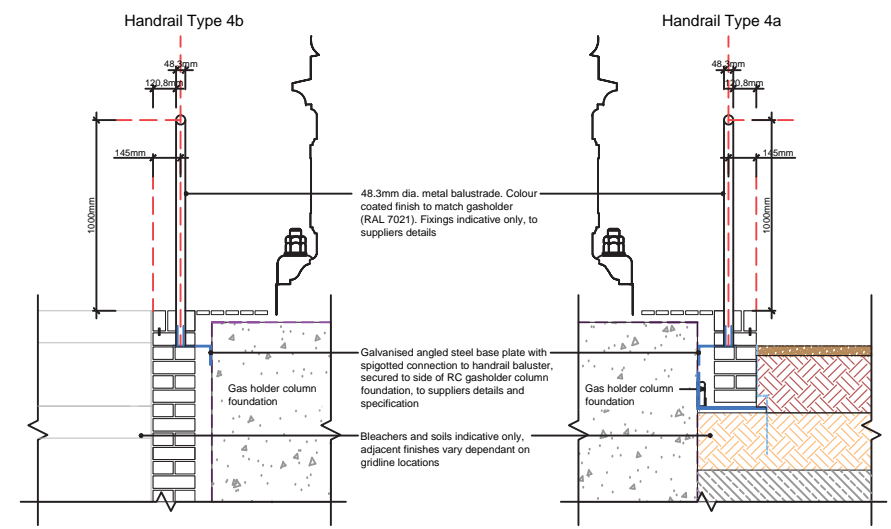
DRAWING TITLE:
**GAS HOLDER 8 HANDRAIL DETAILS
 HANDRAIL TYPE 4
 SHORT BALUSTRADE**

| | |
|-----------------------|---------------------------------|
| drawn: CW | scale: AS @ A1 |
| checked: KmJ | status: Construction |
| date: 12.06.2015 | xref file ref: ALD653_LDbase |
| PROJECT NO. ALD653 | DRAWING NUMBER: LD823 |
| | REVISION: C02 |

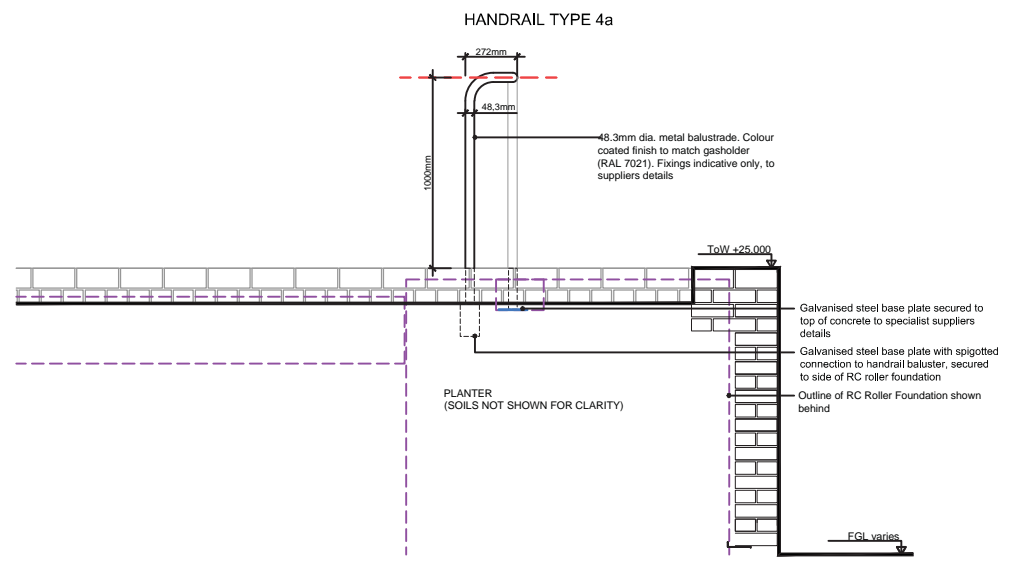
ORIGINAL A1 SIZE SHEET



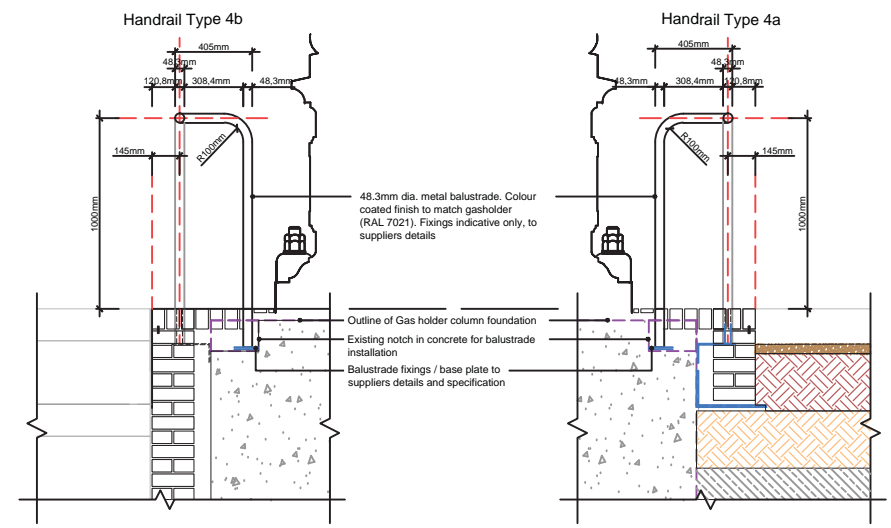
D04 Plan Layout showing Handrail Type 4 - short balustrade
 1:20 @ A1



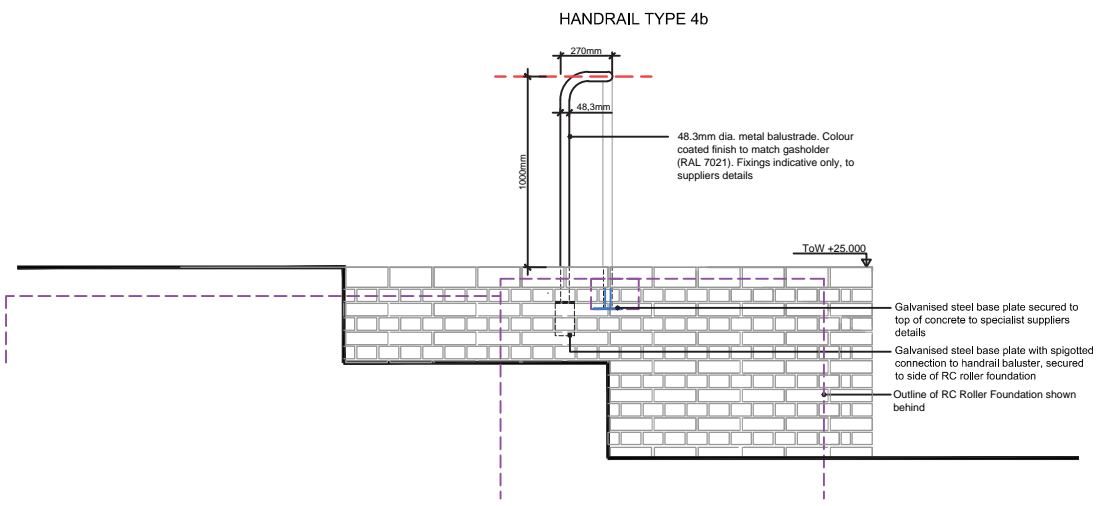
Sections through bleachers / planting showing Handrail Type 4a & 4b and metal angle fixing
 Scale 1:20



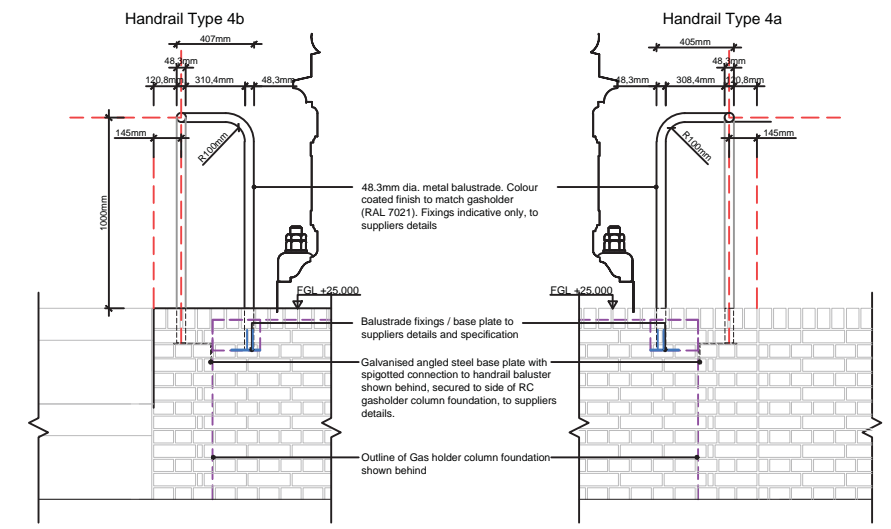
Indicative elevation showing handrail Type 4b: adjacent to bleachers
 1:20 @ A1



Sections through bleachers / planting showing Handrail Type 4a & 4b and metal base plate
 Scale 1:20



Indicative Elevation showing handrail Type 4b: adjacent to bleachers
 1:20 @ A1

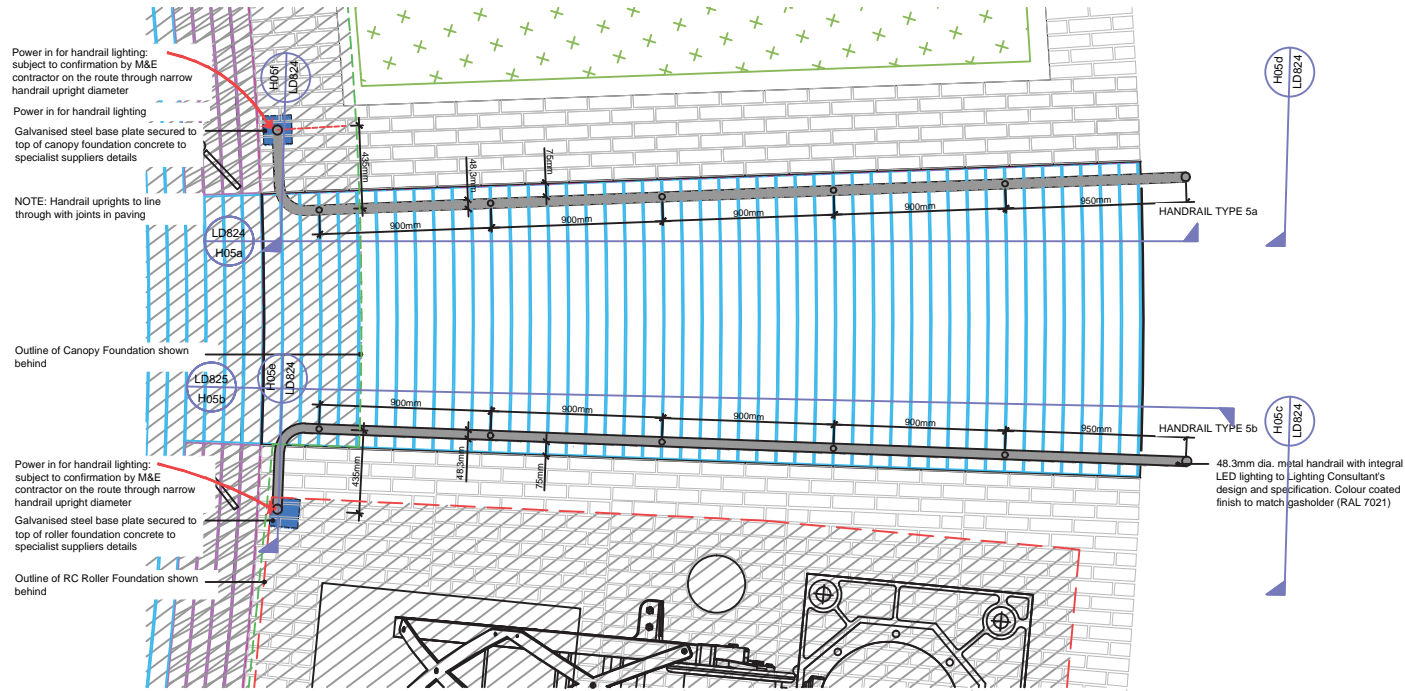


Elevations showing Handrail Type 4a & 4b
 Scale 1:20

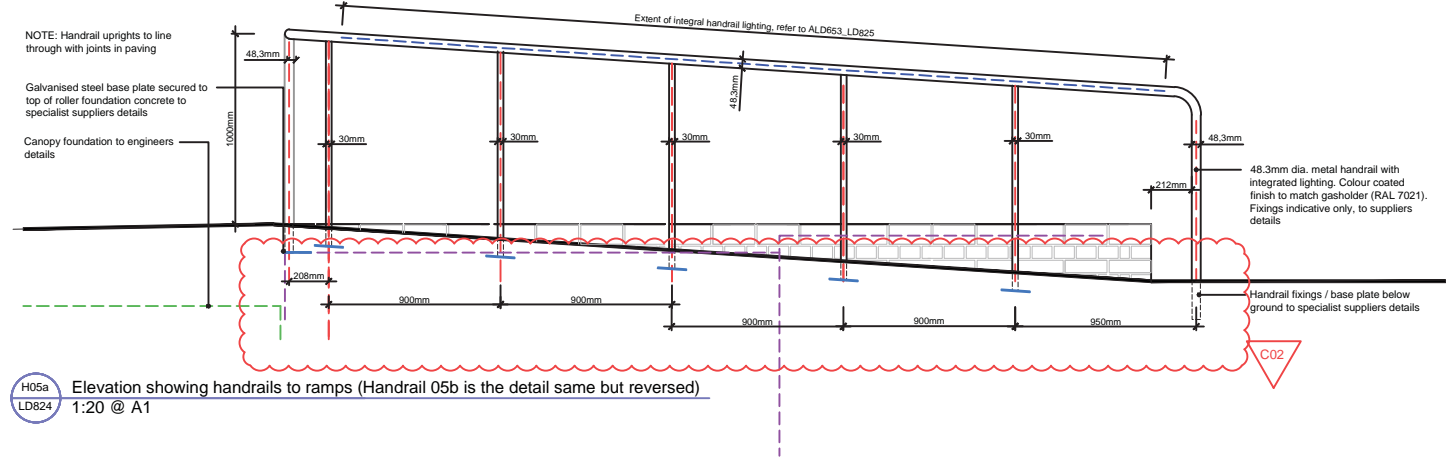
LOCATION & NUMBER OF HANDRAILS:

| | |
|-----------------------------|------------|
| HANDRAIL TYPE 4a | 5no. total |
| To gridlines L, K, J, I & G | |
| HANDRAIL TYPE 4b | 4no. total |
| To gridlines K, J, H & G | |

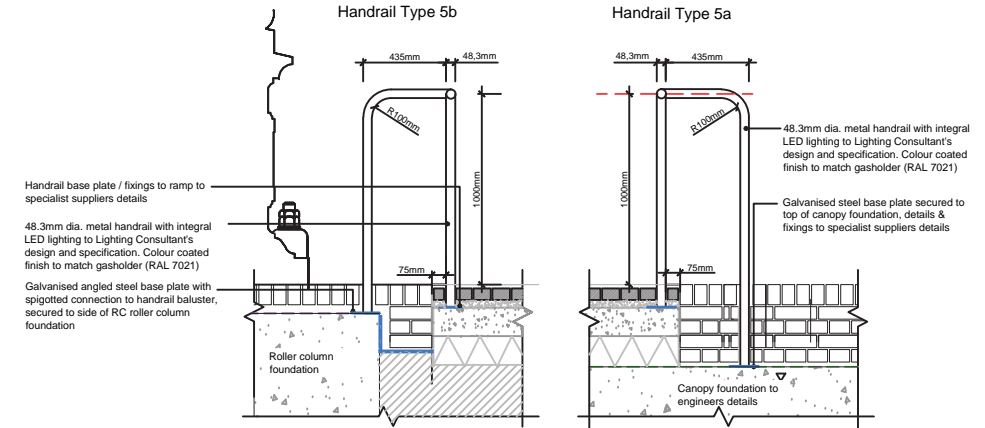
NOTE: Adjacent finishes (ie. bleachers / planting) varies dependant on location.



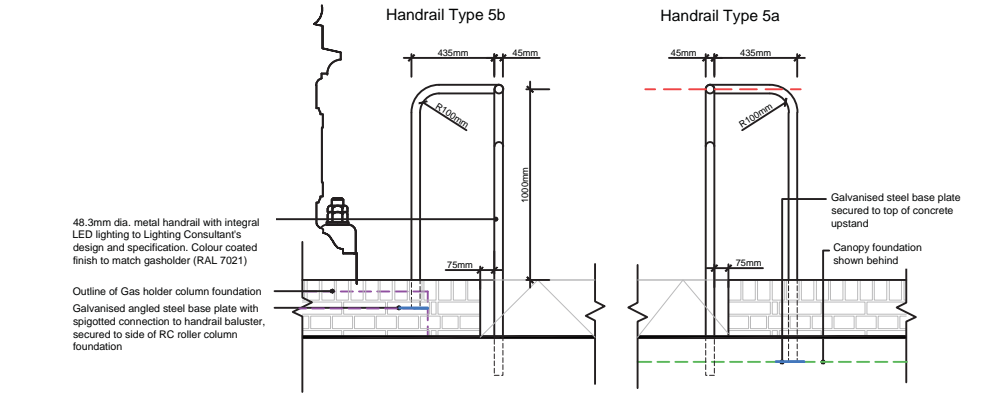
D05 Plan Layout showing Handrail Type 4 - short balustrade
1:20 @ A1



H05a
LD824 Elevation showing handrails to ramps (Handrail 05b is the detail same but reversed)
1:20 @ A1



H05c & H05d
LD824 & LD824 Sections through ramp showing Handrail Type 5a & 5b
Scale 1:20



H05e & H05f
LD824 & LD824 Indicative elevations of ramp showing Handrail Type 5a & 5b
Scale 1:20

LOCATION & NUMBER OF HANDRAILS:

| | | |
|------------------|-----|---|
| HANDRAIL TYPE 5a | No. | To north of ramp between gridline D & C |
| HANDRAIL TYPE 5b | No. | To south of ramp between gridline D & C |

All dimensions to be verified on site. Figured dimensions to take precedence to those scaled. Any areas indicated on this drawing are for guidance only, no responsibility is taken for their accuracy. The drawing is the property of Applied Landscape Design Limited. Copyright is reserved by them and the drawing is issued on the condition that it is not copied, reproduced, retained or disclosed to any unauthorized person, either wholly or in part without the written consent in writing of Applied Landscape Design Limited.

© 2015 Applied Landscape Design Limited. All rights reserved.

CDM/H&S:
The works illustrated on this drawing have been reviewed against the Design CDM Risk Register and significant risks are noted as:

Construction:

- Handling heavy materials / large pieces of stone
- Working at height / risk of falls
- Working adjacent to existing structures (Gas Holder 8)

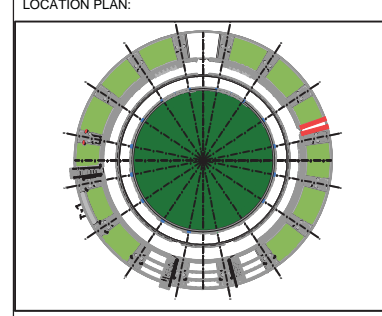
Maintenance:

- Maintaining light bulb fittings

Demolition:

NOTES / KEY:

LOCATION PLAN:



REFERENCE DRAWINGS/DOCUMENTS

| | | |
|--|--|--|
| | | |
| | | |

REVISIONS

| no. | issued | date |
|-----|--|------------|
| C02 | For Construction. Upright setting out amended. | 25.06.2015 |
| C01 | First issue for Construction | 15.06.2015 |

CLIENT:

LANDSCAPE ARCHITECT:

The Threshing Barn
Bignell Park Barns
Chesterton, Nr. Bicester
Oxfordshire, OX26 1TD

Tel: 01869 249776
Email: mail@appliedlandscape.co.uk

PROJECT:

**WESTERN GOODS YARD
KINGS CROSS CENTRAL**

DRAWING TITLE:

**GAS HOLDER 8 HANDRAIL DETAILS
HANDRAIL TYPE 5
TO RAMP**

| | | |
|-------------|-----------------|-----------|
| drawn: | scale: | |
| CW | AS @ A1 | |
| checked: | status: | |
| KmJ | Construction | |
| date: | xref file ref: | |
| 12.06.2015 | ALD653_LDbase | |
| PROJECT NO. | DRAWING NUMBER: | REVISION: |
| ALD653 | LD824 | C02 |

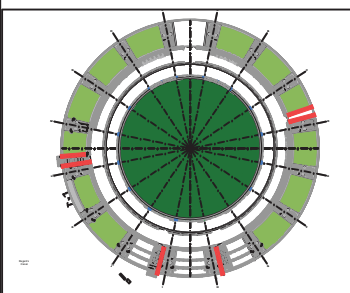
All dimensions to be verified on site. Figured dimensions to take precedence to those scaled. Any areas indicated on this drawing are for guidance only, no responsibility is taken for their accuracy.
 This drawing is the property of Applied Landscape Design Limited. Copyright is reserved by them and the drawing is issued on the condition that it is not copied, reproduced, resented or disclosed to any unauthorized person, either wholly or in part without the written consent in writing of Applied Landscape Design Limited.

© 2015 Applied Landscape Design Limited. All rights reserved.

CDM/H&S:
 The works illustrated on this drawing have been reviewed against the Design CDM Risk Register and significant risks are noted as:
 Construction:
 • Handling heavy materials / large pieces of stone
 • Working at height / risk of falls
 • Working adjacent to existing structures (Gas Holder 8)
 Maintenance:
 • Maintaining light bulb fittings
 Demolition:

NOTES / KEY:

LOCATION PLAN:




REFERENCE DRAWINGS/DOCUMENTS

| | |
|----------------------|-------------------------------|
| ALD653_LD821 - LD824 | Gas Holder 8 Handrail Details |
|----------------------|-------------------------------|

REVISIONS


| no. | issued | date |
|-----|------------------------------|------------|
| C01 | First Issue for Construction | 25.06.2015 |

CLIENT:



LANDSCAPE ARCHITECT:

The Threshing Barn
 Bignell Park Barns
 Chesterton, Nr. Bicester
 Oxfordshire, OX26 1TD
 Tel: 01 869 249776
 Email: mail@appliedlandscape.co.uk

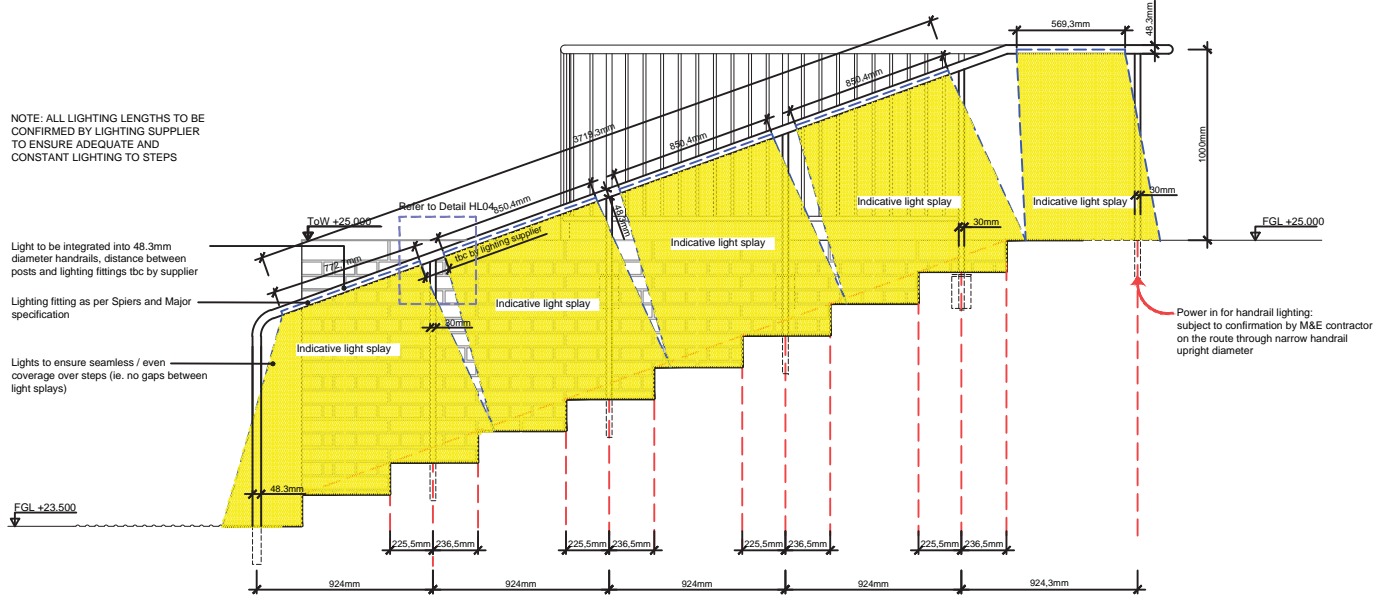


PROJECT:
**WESTERN GOODS YARD
 KINGS CROSS CENTRAL**

DRAWING TITLE:
**GAS HOLDER 8
 HANDRAIL LIGHTING
 TYPICAL DETAILS**

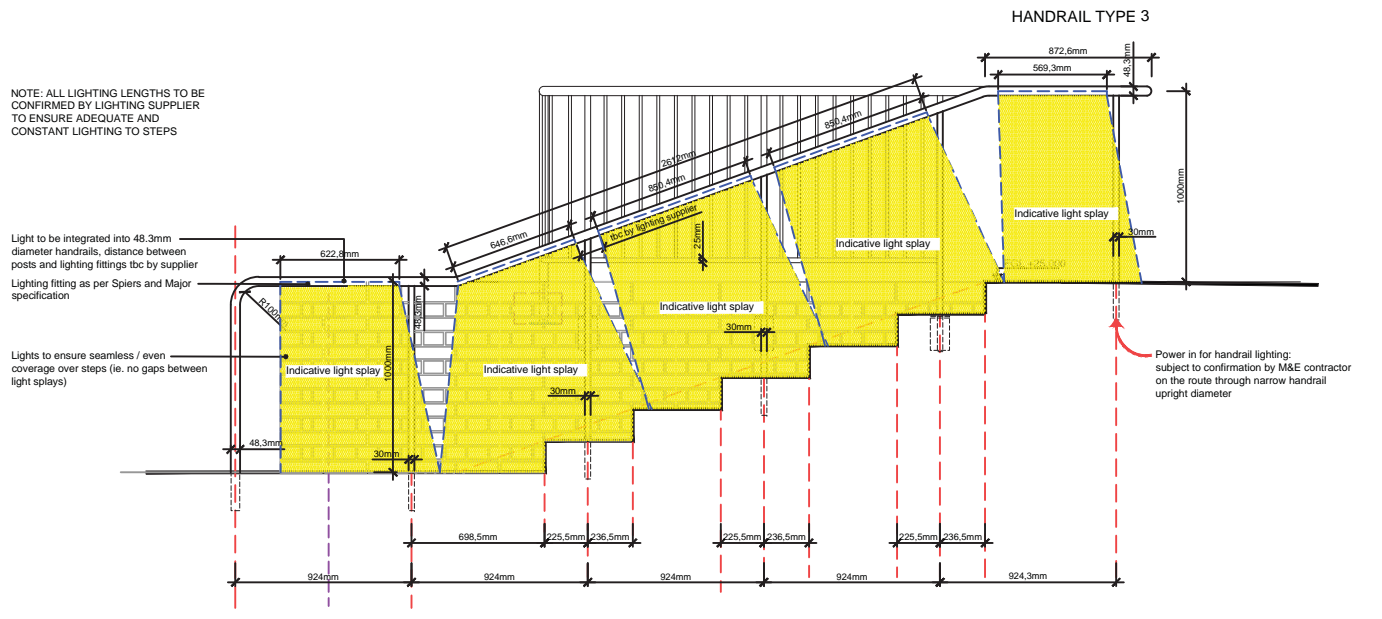
| | |
|-----------------------|---------------------------------|
| drawn: CW | scale: AS @ A1 |
| checked: KmJ | status: Construction |
| date: 17.02.2015 | xref file ref: ALD653_LDbase |
| PROJECT NO. ALD653 | DRAWING NUMBER: LD825 |
| REVISION: C01 | |

ORIGINAL A1 SIZE SHEET



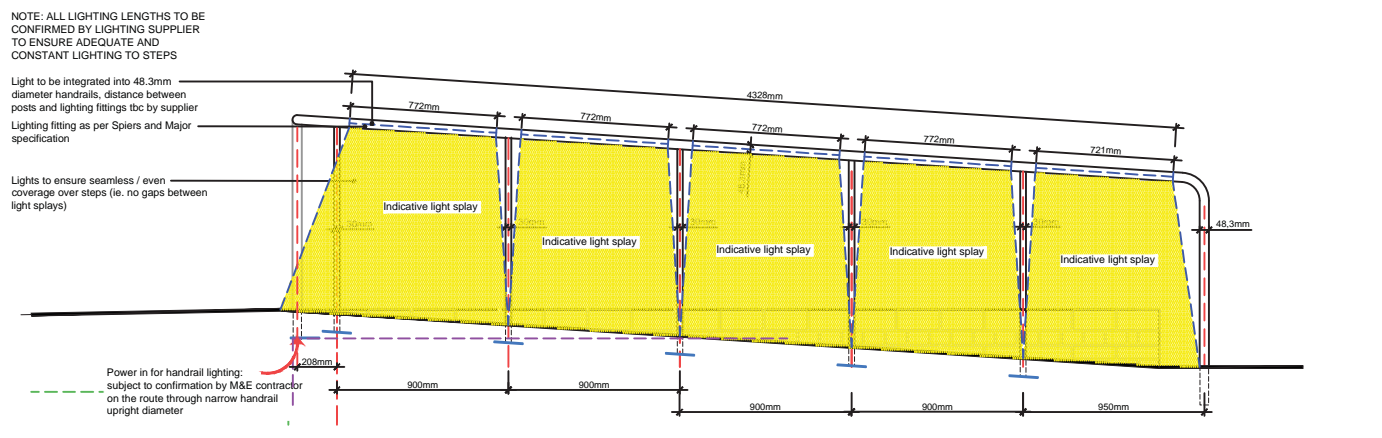
HL01 SECTION ELEVATION SHOWING INDICATIVE HANDRAIL LIGHTING TO HANDRAIL TYPES 1 & 2
 Scale: 1:10 @ A1

NUMBER OF HANDRAILS WITH LIGHTING:
 Total 3no.
 HANDRAIL TYPE 1
 1no. to north of steps between gridline L & M
 HANDRAIL TYPE 2
 2no. total
 1no. to south of steps between gridline L & M
 1no. to east of steps between gridline I & J



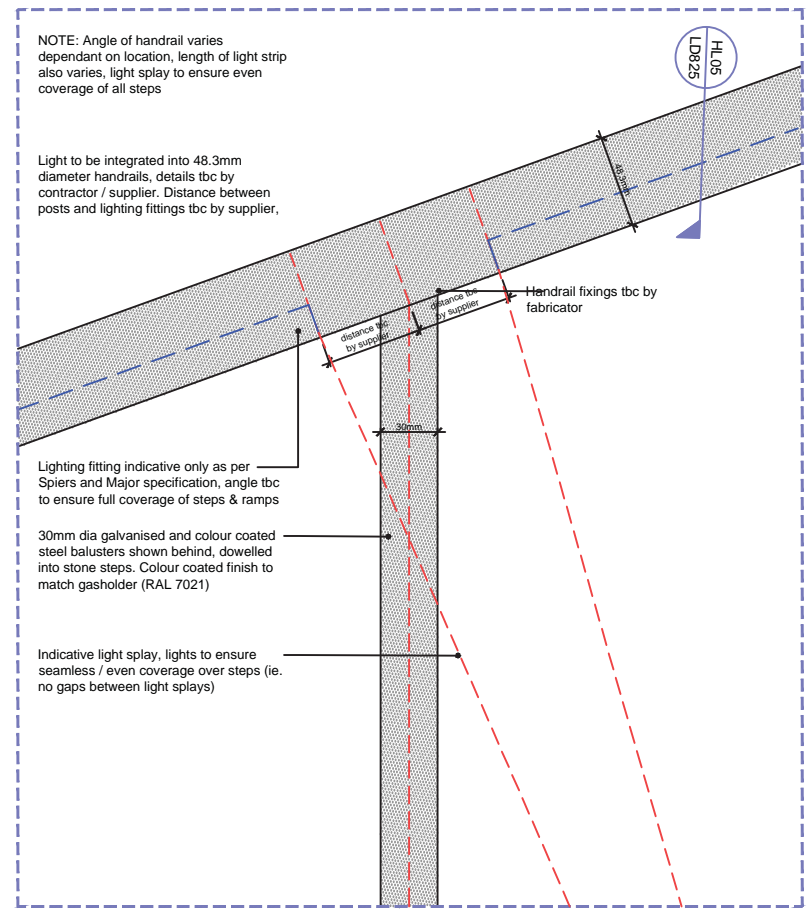
H02 SECTION ELEVATION SHOWING INDICATIVE HANDRAIL LIGHTING TO HANDRAIL TYPES 3
 Scale: 1:10 @ A1

NUMBER OF HANDRAILS WITH LIGHTING:
 HANDRAIL TYPE 3
 1no. to west of steps between gridline H & G

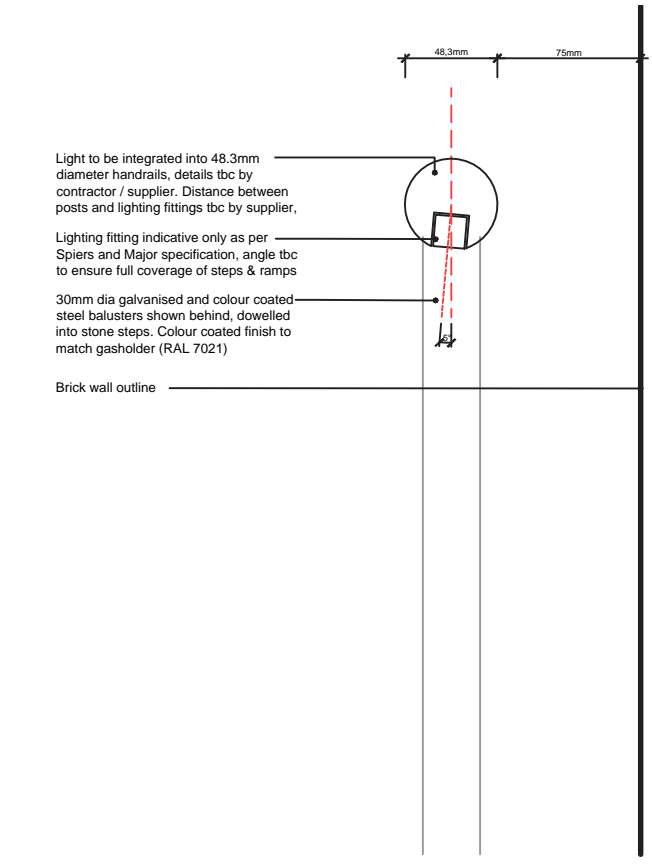


HL03 SECTION ELEVATION SHOWING INDICATIVE HANDRAIL LIGHTING TO HANDRAIL TYPES 5
 Scale: 1:10 @ A1

NUMBER OF HANDRAILS WITH LIGHTING
 Total 2no.
 HANDRAIL TYPE 5a
 1no.
 To north of ramp between gridline D & C
 HANDRAIL TYPE 5b
 1no.
 To south of ramp between gridline D & C



HL04 - Detail elevation showing handrail lighting (indicative)
 Scale 1:2 @ A1



HL05 - Detail section through handrail showing light fitting (indicative)
 Scale 1:2 @ A1



APPENDIX B: CANAL REACH STEP HANDRAILS

All dimensions to be verified on site. Figure dimensions to take precedence to those scaled. Any areas indicated on this drawing are for guidance only, no responsibility is taken for their accuracy.
 The drawing is the property of Applied Landscape Design Limited. Copyright is reserved by them and the drawing is issued on the condition that it is not copied, reproduced, altered or prepared to any unauthorized person, either wholly or in part without the written consent in writing of Applied Landscape Design Limited.

© 2015 Applied Landscape Design Limited. All rights reserved.

CDM/H&S:
 The works illustrated on this drawing have been reviewed against the Design CDM Risk Register and H&M Risk are noted as:

- Construction:
- Handling heavy materials / large pieces of stone
 - Working at height / risk of fall
 - Working adjacent to existing structures (P1 & T1 buildings)

NOTES / KEY:

REFERENCE DRAWINGS/DOCUMENTS

ALD653_HL111 WGY/CANAL REACH
 & HL114 HARD LANDSCAPE LAYOUT

| REVISIONS | | |
|-----------|-----------------------------|----------|
| no. | Issued | date |
| P01 | First issue for information | 16.03.15 |



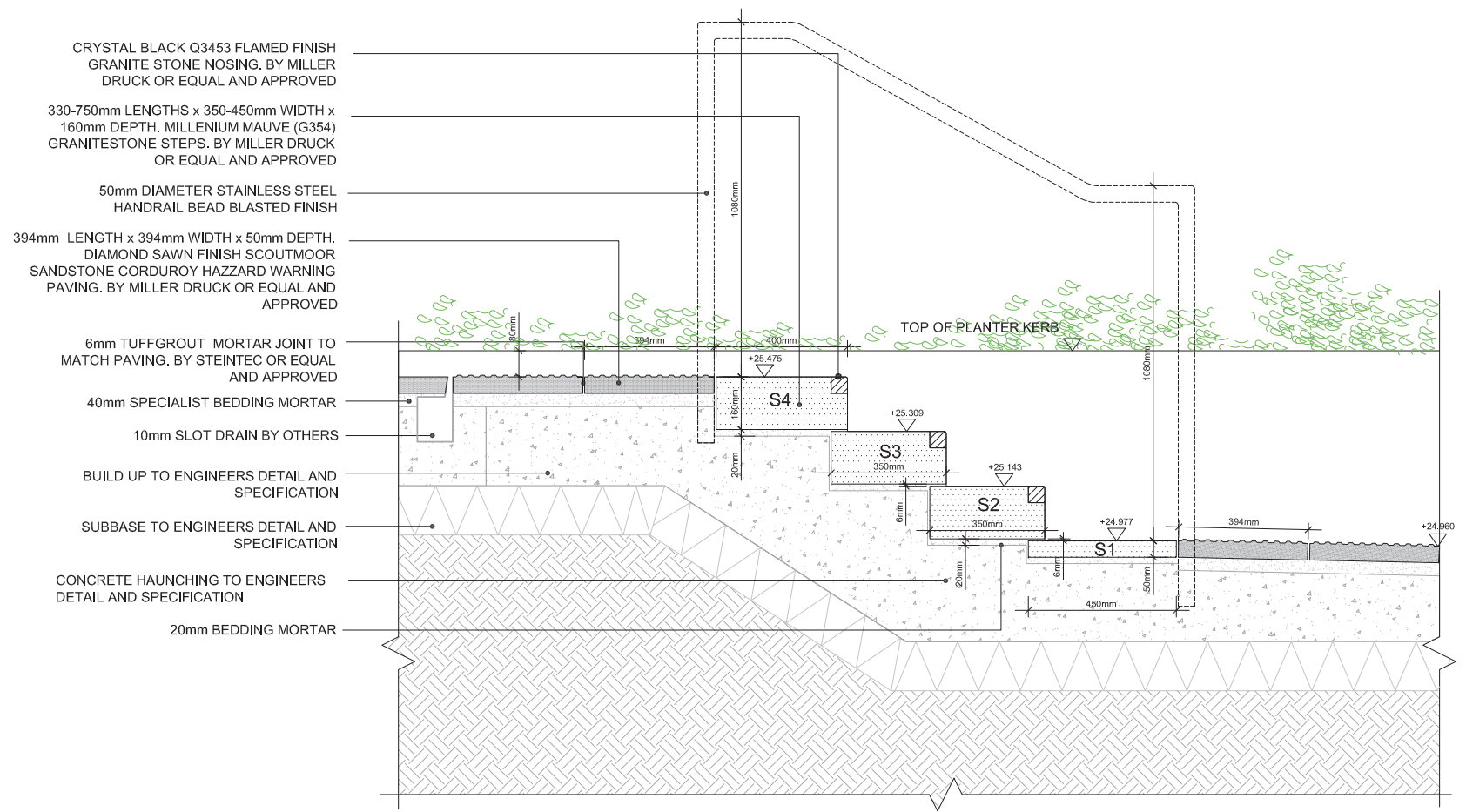
LANDSCAPE ARCHITECT:
 The Threshing Barn
 Biggleswade Park
 Biggleswade, Bedfordshire
 MK43 0JF
 Tel: 01865 249776
 Email: mail@appliedlandscape.co.uk

PROJECT:
**WESTERN GOODS YARD
 KINGS CROSS CENTRAL**

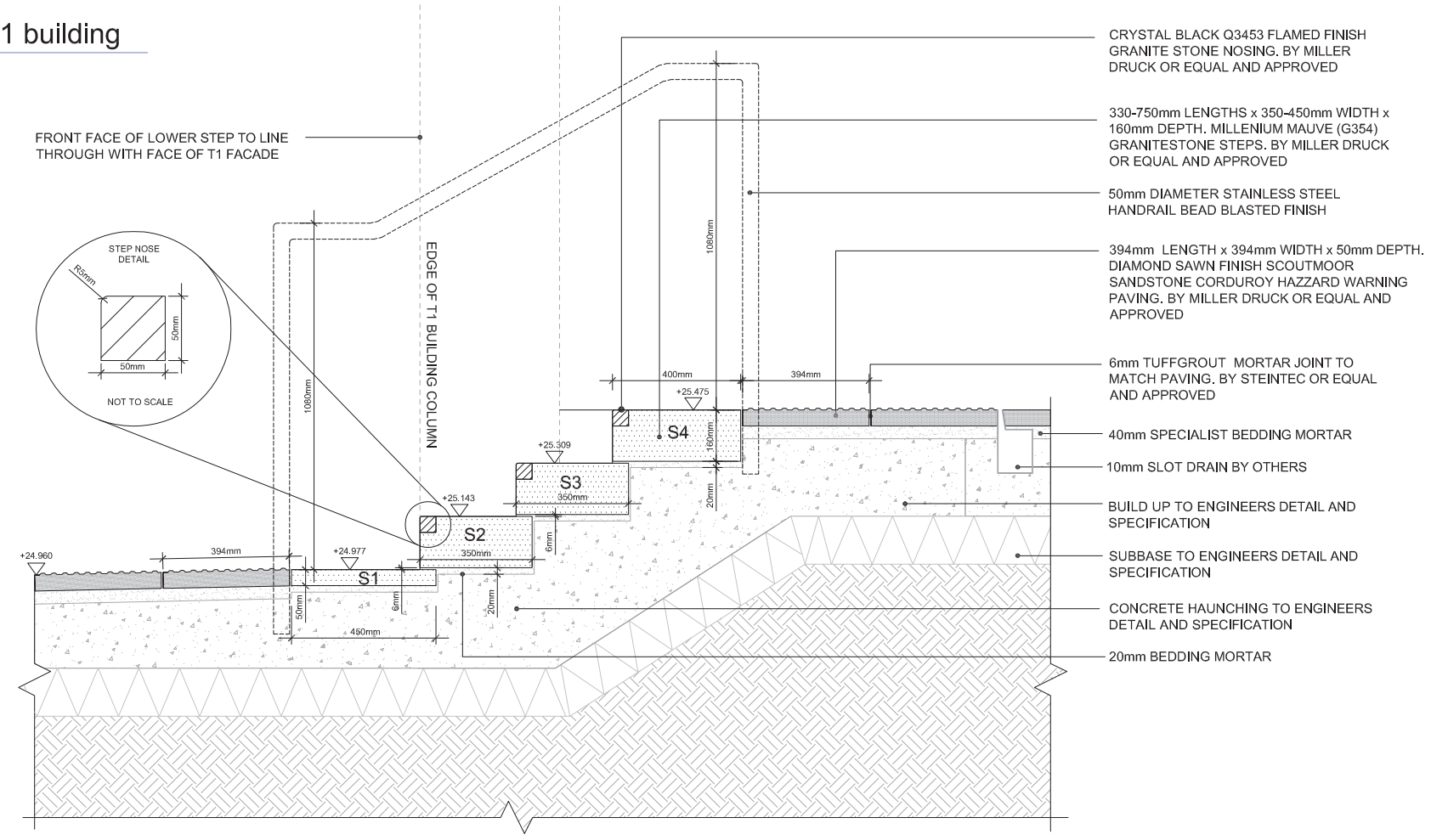
DRAWING TITLE:
**WGY / CANAL REACH
 STEP ELEVATIONS**

| | |
|-----------------------|---------------------------------|
| drawn: AF | scale: 1:10 @ A1 |
| checked: KmJ | status: Information |
| date: 06.03.2015 | xref file ref: ALD653_LDbase |
| PROJECT NO. ALD653 | DRAWING NUMBER: LD860 |
| | REVISION: P01 |

ORIGINAL A1 SIZE SHEET



ST01 West elevation of Canal Reach steps adjacent to T1 building
 LD860 1:10 @ A1



ST02 Section through Canal Reach steps adjacent to T1 building
 LD860 1:10 @ A1

All dimensions to be verified on site. If given dimensions to take precedent to those scaled. Any areas indicated on this drawing are for guidance only, no responsibility is taken for their accuracy.
 The drawing is the property of Applied Landscape Design Limited. Copyright is reserved by them and the drawing is issued on the condition that it is not copied, reproduced, retained or disclosed to any unauthorised person, either wholly or in part without the written consent in writing of Applied Landscape Design.

© 2015 Applied Landscape Design Limited. All rights reserved.

CDM/H&S:
 The works illustrated on this drawing have been reviewed against the Design CDM Risk Register and significant risks are noted as:

- Construction:**
- Handling heavy materials / large pieces of stone
 - Working at height / risk of falls
 - Working adjacent to existing structures (P1 & T1 buildings)

NOTES / KEY:

REFERENCE DRAWINGS/DOCUMENTS

| | |
|----------------------|---------------------------------------|
| ALD653_HL111 & HL114 | WGY/CANAL REACH HARD LANDSCAPE LAYOUT |
|----------------------|---------------------------------------|

REVISIONS

| no. | Issued | date |
|-----|-----------------------------|----------|
| P01 | First issue for information | 16.03.15 |

CLIENT:



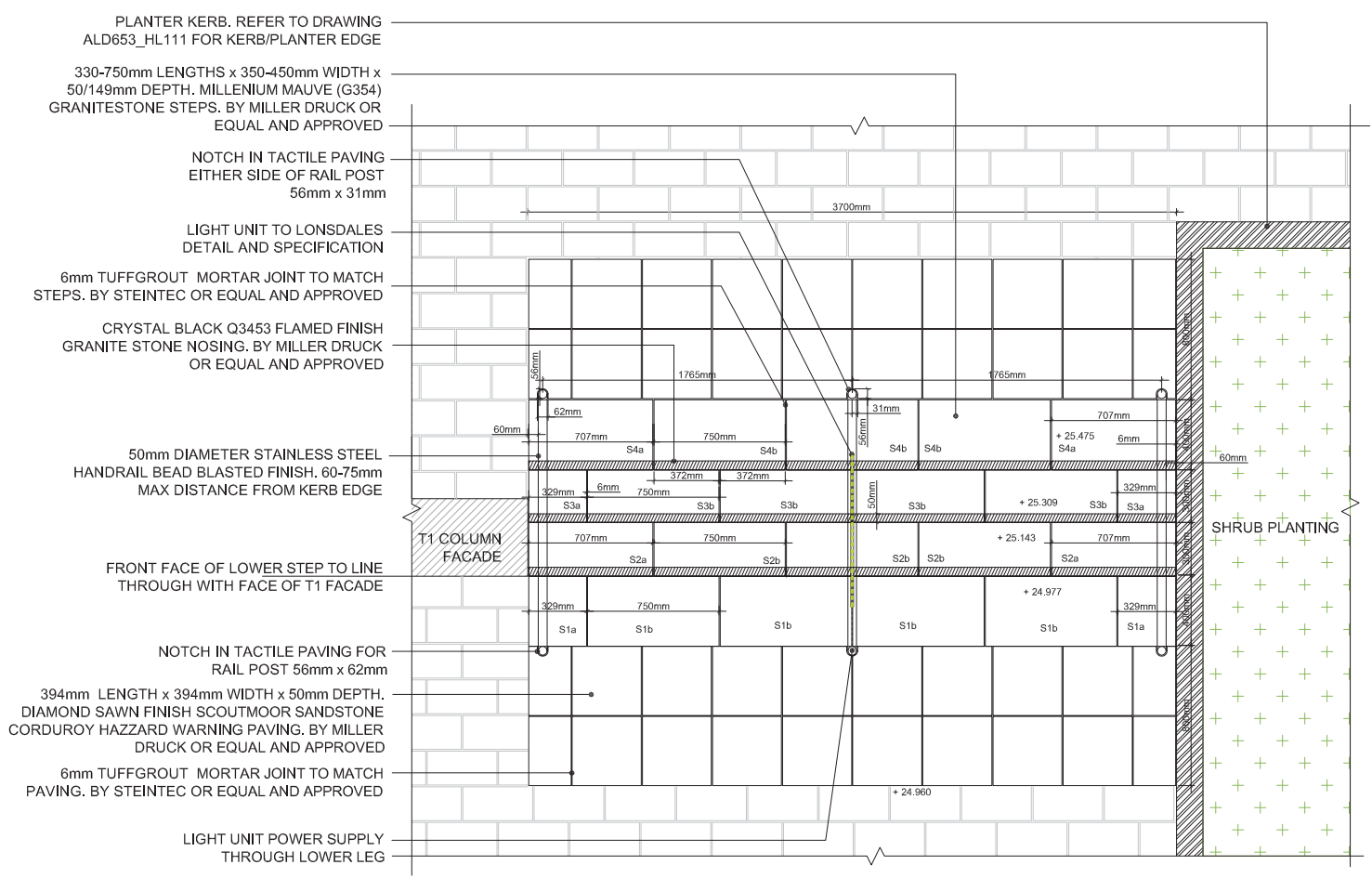
LANDSCAPE ARCHITECT:
 The Threshing Barn
 Bignell Park Barns
 Cheselton, Nr. Banbury
 Oxfordshire, OX26 1TD
 Tel: 01869 249778
 Email: mail@appliedlandscape.co.uk
applied landscape design

PROJECT:
**WESTERN GOODS YARD
 KINGS CROSS CENTRAL**

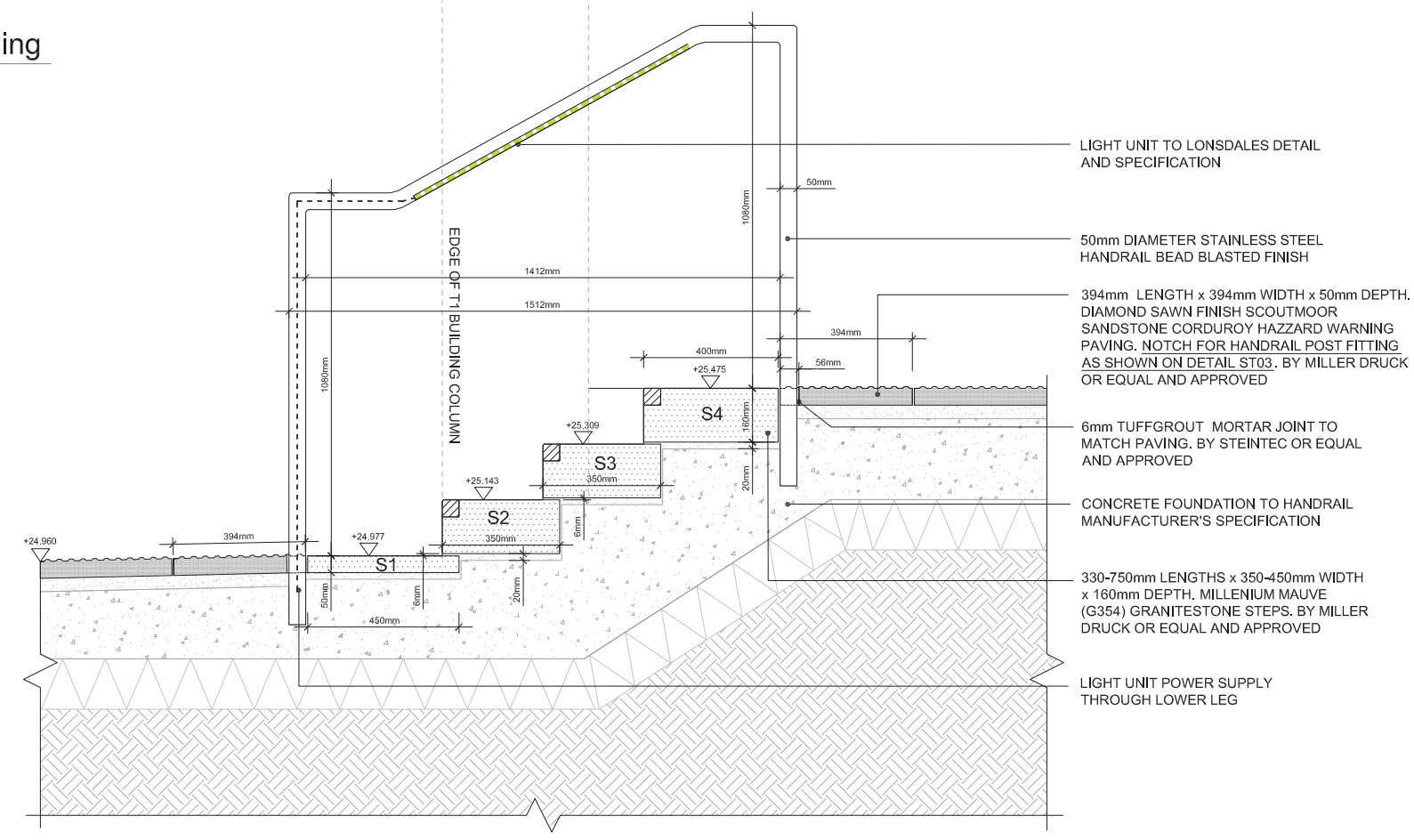
DRAWING TITLE:
**WGY / CANAL REACH
 STEPS PLAN & HANDRAIL DETAIL**

| | |
|-----------------------|---------------------------------|
| drawn: AF | scale: AS SHOWN @ A1 |
| checked: KmJ | status: Information |
| date: 06.03.2015 | xref file ref: ALD653_LDbase |
| PROJECT NO. ALD653 | REVISION: P01 |

ORIGINAL A1 SIZE SHEET



ST04 Detail Plan Layout: Canal Reach steps adjacent to T1 building
LD861 1:20 @ A1



ST03 Section through Canal Reach steps adjacent to T1 building: HANDRAIL DETAIL
LD861 1:10 @ A1

394mm WIDTH x 50mm DEPTH. OVERSIZED LENGTH >460 TO MEET P1 BUILDING FACADE.
DIAMOND SAWN FINISH SCOUTMOOR SANDSTONE CORDUROY HAZZARD WARNING PAVING. BY MILLER DRUCK OR EQUAL AND APPROVED

PLANTER KERB. REFER TO DRAWING ALD653_HL111 FOR KERB/PLANTER EDGE

CRYSTAL BLACK Q3453 FLAMED FINISH GRANITE STONE NOSING. BY MILLER DRUCK OR EQUAL AND APPROVED

492-741mm LENGTHS x 350-400mm WIDTH x 50-205mm DEPTH. DIAMOND SAWN FINISH SCOUTMOOR SANDSTONE CORDUROY HAZZARD WARNING PAVING. BY MILLER DRUCK OR EQUAL AND APPROVED

394mm LENGTH x 394mm WIDTH x 50mm DEPTH. DIAMOND SAWN FINISH SCOUTMOOR SANDSTONE CORDUROY HAZZARD WARNING PAVING. BY MILLER DRUCK OR EQUAL AND APPROVED

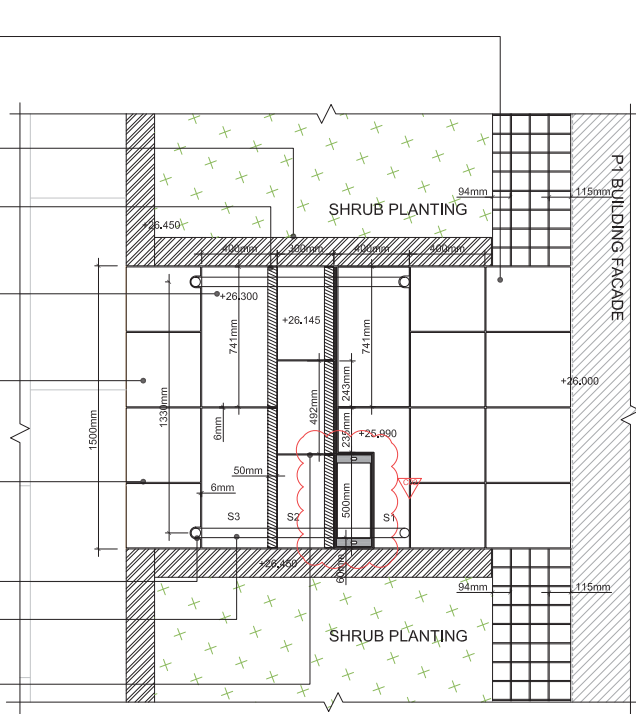
6mm TUFFGROUT MORTAR JOINT TO MATCH PAVING. BY STEINTEC OR EQUAL AND APPROVED
200mm X 500mm STAINLESS STEEL SLOT DRAIN INSPECTION COVER, TO KENT STAINLESS / MAYLIM FABRICATION DETAILS

NOTCH IN TACTILE PAVING FOR RAIL POST 56mm x 62mm

48.3mm DIAMETER STAINLESS STEEL HANDRAIL BEAD BLASTED FINISH 60-75mm MAX DISTANCE FROM KERB EDGE

6mm TUFFGROUT MORTAR JOINT TO MATCH STEPS. BY STEINTEC OR EQUAL AND APPROVED

ST05 Detail Plan Layout: Canal Reach steps adjacent to P1 building facade
LD862 1:20 @ A1



6mm TUFFGROUT MORTAR JOINT TO MATCH STEPS. BY STEINTEC OR EQUAL AND APPROVED

50mm DIAMETER STAINLESS STEEL HANDRAIL BEAD BLASTED FINISH. 60-75mm MAX DISTANCE FROM KERB EDGE

CRYSTAL BLACK Q3453 FLAMED FINISH GRANITE STONE NOSING. BY MILLER DRUCK OR EQUAL AND APPROVED

S3 UNITS. 741mm LENGTH x 400mm WIDE x 149mm DEPTH. DIAMOND SAWN FINISH SCOUTMOOR SANDSTONE. BY MILLER DRUCK OR EQUAL AND APPROVED

S2 UNITS. 492mm LENGTH x 350mm WIDE x 205mm DEPTH. DIAMOND SAWN FINISH SCOUTMOOR SANDSTONE. BY MILLER DRUCK OR EQUAL AND APPROVED

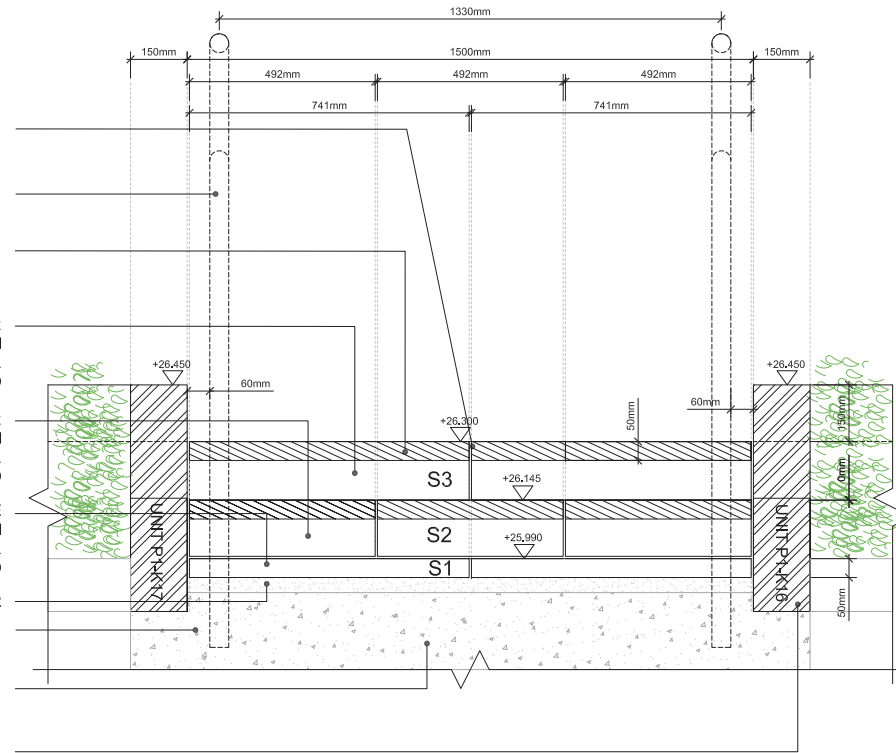
S1 UNITS. 741mm LENGTH x 400mm WIDE x 50mm DEPTH. DIAMOND SAWN FINISH SCOUTMOOR SANDSTONE. BY MILLER DRUCK OR EQUAL AND APPROVED

40mm SPECIALIST BEDDING MORTAR
CONCRETE HAUNCHING TO ENGINEERS DETAIL AND SPECIFICATION

BUILD UP TO ENGINEERS DETAIL AND SPECIFICATION

150mm PLANTER KERB. REFER TO DRAWING ALD653_HL111 FOR KERB/PLANTER EDGE

ST07 East Elevation of Canal Reach steps adjacent to P1 building facade
LD862 1:10 @ A1



50mm DIAMETER STAINLESS STEEL HANDRAIL BEAD BLASTED FINISH

CRYSTAL BLACK Q3453 FLAMED FINISH GRANITE STONE NOSING. BY MILLER DRUCK OR EQUAL AND APPROVED

492-741mm LENGTHS x 350-400mm WIDTH x 50-205mm DEPTH. DIAMOND SAWN FINISH SCOUTMOOR SANDSTONE CORDUROY HAZZARD WARNING PAVING. BY MILLER DRUCK OR EQUAL AND APPROVED

394mm LENGTH x 394mm WIDTH x 50mm DEPTH. DIAMOND SAWN FINISH SCOUTMOOR SANDSTONE CORDUROY HAZZARD WARNING PAVING. NOTCH FOR HANDRAIL POST FITTING AS SHOWN ON DETAIL ST06. BY MILLER DRUCK OR EQUAL AND APPROVED

40mm SPECIALIST BEDDING MORTAR

BUILD UP TO ENGINEERS DETAIL AND SPECIFICATION

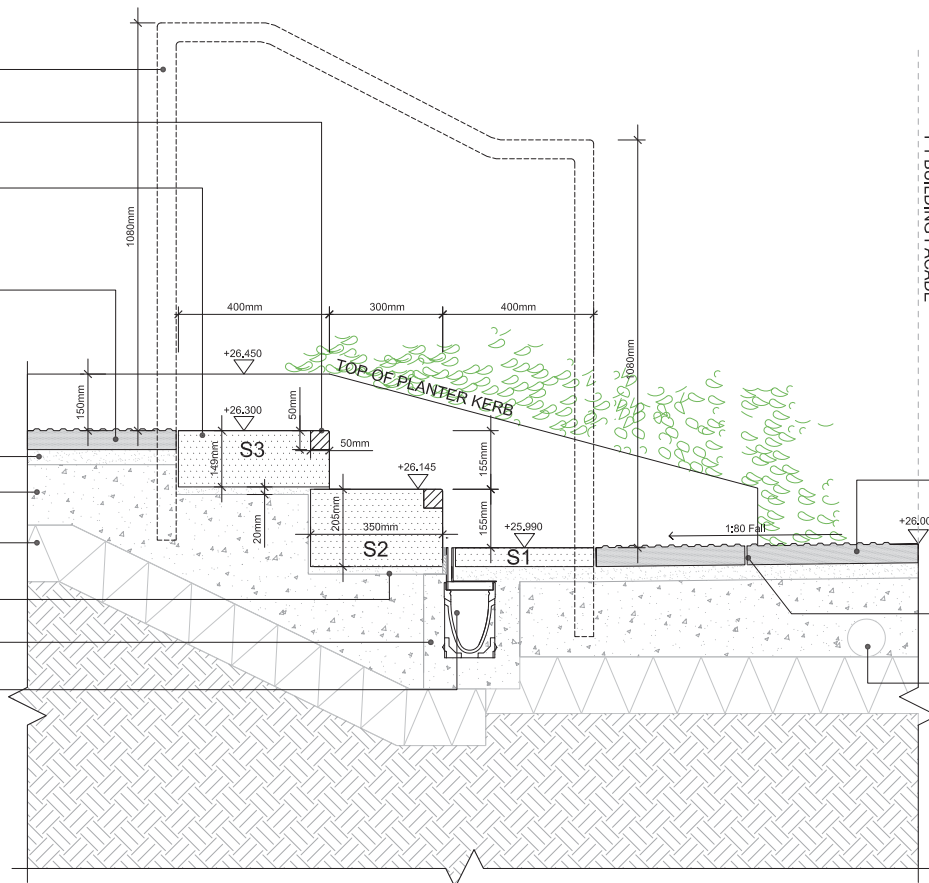
SUBBASE TO ENGINEERS DETAIL AND SPECIFICATION

20mm BEDDING MORTAR

CONCRETE HAUNCHING TO ENGINEERS DETAIL AND SPECIFICATION

6mm THROAT WIDTH STAINLESS STEEL SLOT DRAIN TO ENGINEERS DETAILS AND SPECIFICATIONS

ST06 Section through Canal Reach steps adjacent to P1 building facade
LD862 1:10 @ A1



394mm WIDTH x 50mm DEPTH. OVERSIZED LENGTH >460 TO MEET P1 BUILDING FACADE. DIAMOND SAWN FINISH SCOUTMOOR SANDSTONE CORDUROY HAZZARD WARNING PAVING. BY MILLER DRUCK OR EQUAL AND APPROVED

6mm TUFFGROUT MORTAR JOINT TO MATCH PAVING. BY STEINTEC OR EQUAL AND APPROVED

LAND DRAIN TO ENGINEERS DETAIL AND SPECIFICATION

All dimensions to be verified on site. Figure dimensions to take precedence to those scaled. Any areas indicated on this drawing are for guidance only, no responsibility is taken for their accuracy.
The drawing is the property of Applied Landscape Design Limited. Copyright is reserved by them and the drawing is based on the condition that it is not copied, reproduced, related or disclosed to any unauthorised person, either wholly or in part without the written consent of Applied Landscape Design.

© 2015 Applied Landscape Design Limited. All rights reserved.

CDM/H&S:

The works illustrated on this drawing have been reviewed against the Design CDM Risk Register and significant risks are noted as:

- Construction:
- Handling heavy materials / large pieces of stone
- Working at height / risk of falls
- Working adjacent to existing structures (P1 & T1 buildings)

NOTES / KEY:

REFERENCE DRAWINGS/DOCUMENTS

ALD653_HL111 WGY/CANAL REACH
& HL114 HARD LANDSCAPE LAYOUT

REVISIONS

| no. | issued | date |
|-----|---|----------|
| C02 | Addition of slot drain inspection cover, Issue for construction | 08.07.15 |
| C01 | Amended following TLA comments First Issue for construction | 28.05.15 |
| P01 | First Issue for Information | 16.03.15 |



LANDSCAPE ARCHITECT:
The Threshing Barn
Bignell Park Barns
Chesherton, Nr. Bicester
Oxfordshire, OX26 1TD
Tel: 01869 249776
Email: mail@appliedlandscape.co.uk



PROJECT:
WESTERN GOODS YARD
KINGS CROSS CENTRAL

DRAWING TITLE:
WGY / CANAL REACH
P1 STEPS PLAN & ELEVATION DETAIL

| drawn: | scale: | |
|-------------|-----------------|-----------|
| AF | AS SHOWN @ A1 | |
| checked: | status: | |
| KmJ | Construction | |
| date: | xref file ref: | |
| 06.03.2015 | ALD653_LDbase | |
| PROJECT NO. | DRAWING NUMBER: | REVISION: |
| ALD653 | LD862 | C02 |

ORIGINAL A1 SIZE SHEET