

FILE COPY

CASE COPY

ADDRESS

PLANS APPROVED

200712229/P

PLAN B - PROJECT SITE 38

Plan E - Project locations map - 45 locations applied for



**CASE COPY**  
**PLANS APPROVED**  
RN:  
ADDRESS: 21 MAY 2007

CITY OF WESTMINSTER  
260407 0703532  
PLANNING AND CITY DEVELOPMENT

**FILE COPY**

2007/2229/P

CITY OF WESTMINSTER **FILE** **GRAND**  
**TOUR**

260407 0703532

PLANNING AND CITY DEVELOPMENT

THE NATIONAL GALLERY

CASE COPY

TP:

RN:

ADDRESS:

### Painting 13/46

The Supper at Emmaus,  
Caravaggio

Some see in Caravaggio's dark paintings a reflection of his own life. And what a dark and troubled life it was.

A volatile visionary, Caravaggio swaggered through the streets of Rome with a sword at his side. He fought a duel and killed a man, fled Rome, joined the Knights of Malta, escaped from prison, was disfigured by hired thugs and died of fever whilst the ship carrying all his belongings sailed on without him. And all this before seeing his fortieth year.

It's astonishing to think that from this short and tempestuous life, sprang such an incredible body of work. The Supper at Emmaus is one of his most powerful paintings. It depicts the miraculous appearance of Christ to the disciples after the resurrection, and the moment of recognition, from the Gospel of Saint Luke. The disciples' outstretched arms draw us into the painting, making us feel like participants in the event, dragging the story from scripture into contemporary life. It still has the power to arrest and dazzle to this day.

The National Gallery has key Caravaggio works from different stages in his career, and also key works from his successors, who took his legacy into bold and dramatic new territories. These pictures belong to the public and entrance to see them is free.

To find about Caravaggio download audio tour information on: (number)  
Call length and cost information

[www.nationalgallery.org.uk](http://www.nationalgallery.org.uk)

### The Grand Tour

The Grand Tour is the first project of its kind in the world. (Thirty) paintings from the collection have been hung on walls around the streets of central London.

They represent a small selection of the paintings that can be enjoyed and experienced every day at The National Gallery.

To find out more about The Grand Tour, the locations of the other paintings and how the project was created, log on to:  
[www.thegrandtour.co.uk](http://www.thegrandtour.co.uk)

The Grand Tour has been made possible by the ground breaking print technology of HewlettPackard. [www.welcome.hp.com](http://www.welcome.hp.com)

**PLANS APPROVED**

21 MAY 2007

**2007/2229/P**

THE  
NATIONAL  
GALLERY

Powered by



# Plan D1 - Project description

**PLANS APPROVED**

21 MAY 2007

## **The Grand Tour**

Giving The National Gallery's collection back to the public

### **The big idea**

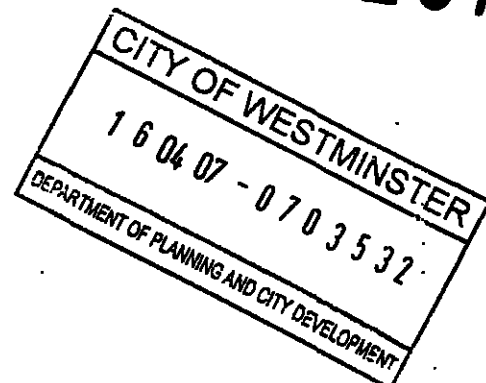
We are creating a series of art tours for the public around central London using replica paintings from The National Gallery's permanent collection (see Plan C - Project Visual). Using cutting edge print techniques provided by our technology partner HewlettPackard, we will make sure that the paintings are as indistinguishable from the real thing as possible. The tours will be backed up by a press launch, downloads, and further information on a custom built website.

The locations of the paintings will be around central London in three 'hotspots' - Soho, Chinatown and Covent Garden. This will help us attract both tourists and Londoners. The paintings will create points of interest in the locations they appear, and drive people around the three areas.

The event is going to take place from June 8th 2007, and will last for 12 weeks.

**FILE COPY**

**2007/2229/P**



Plan D2 - Project description cont.

PLANS APPROVED

# THE GRAND TOUR

21 May 2007

The National Gallery Grand Tour will be declared open this summer, where we'll be expecting to see masterpieces from Caravaggio to Constable vying for position amongst the bustling streets of central London, with a series of events celebrating the richness and diversity of The National Gallery's permanent collection.

The origins of the Grand Tour date back to the 17th Century, when the wealthy upper classes undertook a journey of cultural enlightenment across Europe, in a life changing trip that could last for weeks or even several months.

Cultural exposure is not so hard to experience in the 21st Century, of course, where galleries are only a train ride, bus trip or short walk away. For the first time, however, we've seen the idea of the Grand Tour turned on its head. Rather than the public seeking out its art, art is seeking out its public. Keep your eyes peeled this summer.

**FILE COPY**

**2007/2229/P**

# THE GRAND TOUR

# 2007/2229/P

## WESTMINSTER SITES:

SITE NUMBER	ADDRESS
SITE 1	12-26 LEXINGTON STREET, LONDON, W1F 0LE (ON THE MARBLE, FRONT EXTERNAL WALL, ON LEXINGTON STREET)
SITE 2	PRET-A-MANGER, 27-28 GREAT MARLBOROUGH STREET, LONDON, W1F 7HY (ON THE SIDE EXTERNAL WALL ON LITTLE MARLBOROUGH STREET)
SITE 3	MOLINAIRE RECORDING STUDIO, 33-43 FOUBERTS PLACE, LONDON, W1F 7QQ (ON THE FRONT EXTERNAL WALL, ON FOUBERTS PLACE)
SITE 4	25 CARNABY STREET, W1F 7DE (ON THE SIDE EXTERNAL WALL, ON MARLBOROUGH COURT)
SITE 7	HAMLEYS, 188-196 REGENT STREET, LONDON, W1B 5BT (ON THE REAR EXTERNAL WALL, ON KINGLY STREET)
SITE 8	LONDON ELECTRICITY PLC, (ADDRESS KNOWN AS) BROADWICK STREET, LONDON, W1F (WALL ON GANTON STREET, W1)
SITE 11	SWEATY BETTY, 19 BEAK STREET, LONDON, W1F 9RP (ON THE SIDE EXTERNAL WALL, IN KINGLY COURT)
SITE 12	NATIONAL MAGAZINE, 72 BROADWICK STREET, LONDON, W1F 9EP (ON THE EXTERNAL WALL, ON BROADWICK STREET)
SITE 13	MICHIKO KOSHINO, 59 BROADWICK STREET, LONDON, W1F 9QQ (ON THE EXTERNAL SIDE WALL, ON MARSHALL STREET)
SITE 15	CAFÉ ROYAL, 64-72 REGENT STREET & 13-17 GLASSHOUSE STREET, LONDON, W1B 5EL (ON THE EXTERNAL WALL, ON GLASSHOUSE STREET)
SITE 16	REGENT'S PALACE, HOTEL, GLASSHOUSE STREET, LONDON, W1B 5DN (ON THE HOARDING, ON THE CORNER OF GLASSHOUSE STREET & SHERWOOD STREET)
SITE 17	COWLING & WILCOX LTD, 26-28 BROADWICK STREET, LONDON, W1F 1FG (ON THE EXTERNAL WALL, NEXT TO THE SHOP ON BROADWICK STREET)
SITE 18	BOOM SOUND STUDIOS, 27-29 BERWICK STREET, LONDON, W1E 8BQ (ON THE FRONT EXTERNAL WALL, ON BERWICK STREET)
SITE 19	124-126 WARDOUR STREET, LONDON, W1F 0TY (ON THE SIDE EXTERNAL WALL, IN ST ANNE'S COURT)
SITE 21	ESCAPE BAR, 8-10 BREWER STREET, LONDON, W1F 0SU (ON THE SIDE EXTERNAL WALL, IN WALKER'S COURT)

**CASE COPY**  
TP:  
PA:  
ADDRESS:

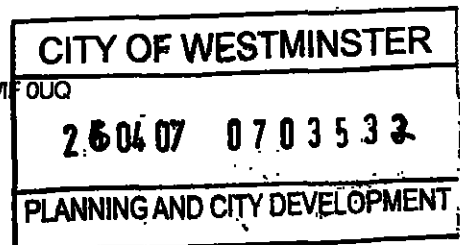
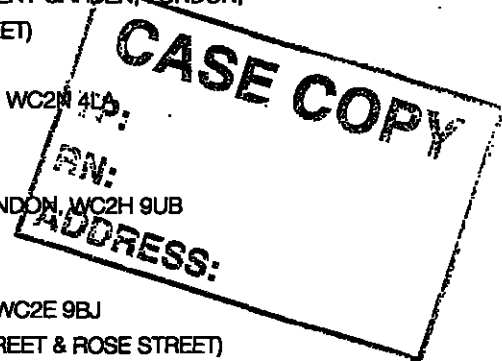
**CITY OF WESTMINSTER**  
26 04 07 07 03 532  
**PLANNING AND CITY DEVELOPMENT**

# PLANS APPROVED

21 MAY 2007


# FILE COPY

- SITE 22 68 DEAN STREET, LONDON, W1D 4QJ  
(ON THE EXTERNAL SIDE WALL, IN MEARD STREET)
- SITE 24 PRINCE EDWARD THEATRE, OLD COMPTON STREET, LONDON, W1D 4HS  
(ON THE SIDE EXTERNAL WALL, ON GREEK STREET)
- SITE 25 CAFFE NERO, 43 FRITH STREET, LONDON, W1V 5TE  
(ON THE FRONT EXTERNAL WALL, ON FRITH STREET)
- SITE 26 PALACE THEATRE, SHAFTESBURY AVENUE, LONDON, W1D 5AY  
(ON THE SIDE EXTERNAL WALL, ON ROMILLY STREET)
- SITE 27 QUEENS THEATRE, WARDOUR STREET, LONDON, W1D 6BA  
(ON THE SIDE EXTERNAL WALL, ON WARDOUR STREET)
- SITE 28 26 RUPERT STREET, LONDON, W1D 6DH  
(ON THE EXTERNAL SIDE WALL, IN RUPERT COURT)
- SITE 30 4 MACCLESFIELD COURT, LONDON, W1D 5BW  
(ON THE EXTERNAL WALL, ON MACCLESFIELD COURT)
- SITE 32 SOHO FORE STATION, 126 SHAFTESBURY AVENUE, LONDON, W1D 5ET  
(ON THE EXTERNAL WALL, ON THE CORNER OF GERRARD STREET & GERRARD PLACE)
- SITE 33 SOHO FORE STATION, 126 SHAFTESBURY AVENUE, LONDON, W1D 5ET  
(ON THE REAR EXTERNAL WALL, ON NEWPORT PLACE)
- \* SITE 36 MANZI'S, 1-2 LEICESTER STREET, LONDON, WC2H 7BL  
(ON THE EXTERNAL SIDE WALL, ON LISLE STREET)
- \* SITE 37 THE HIPPODROME, LIECESTER SQUARE, LONDON, WC2H 7JH  
(ON THE EXTERNAL SIDE WALL, ON LEICESTER COURT)
- \* SITE 38 LONDON GRAPHIC CENTRE, 16-18 SHELTON STREET, COVENT GARDEN, LONDON,  
WC2H 9JL (ON THE EXTERNALWALL, ON SHELTON STREET)
- \* SITE 39 SHE ACTIVE, 21-22 NEW ROW, COVENT GARDEN, LONDON, WC2H 4LA  
(ON THE EXTERNAL FRONT WALL, ON NEW ROW)
- \* SITE 51 THE NATIONAL FILM SCHOOL, 24-26 SHELTON STREET, LONDON, WC2H 9UB  
(ON THE EXTERNAL WALL, ON LANGLEY STREET)
- \* SITE 55 THE FORGE RESTAURANT, 14 GARRICK STREET, LONDON, WC2E 9BJ  
(ON THE EXTERNAL WALL, ON THE CORNER OF FLORAL STREET & ROSE STREET)
- SITE 56 CLEAR CHANNEL, 33 GOLDEN SQUARE, LONDON, W1F 9 JT  
(ON THE EXTERNAL WALL, ON GOLDEN SQUARE)
- SITE 58 KLP EURO RSCG, 109 WARDOUR STREET, LONDON, W1F 0UQ  
(ON THE EXTERNAL WALL, ON WARDOUR STREET)
- SITE 59 37-38 GOLDEN SQUARE, LONDON, W1F 9LA



(ON THE EXTERNAL WALL, ON GOLDEN SQUARE)

SITE 61 THE SOHO LOUNGE, 69 DEAN STREET, LONDON, W1D 3SE  
(ON THE EXTERNAL SIDE WALL, IN MEARD STREET)

SITE 62  COVDEN HOUSE, 7A LANGLEY STREET, LONDON, WC2H 9JA  
(ON THE EXTERNAL WALL, ON LANGLEY STREET)

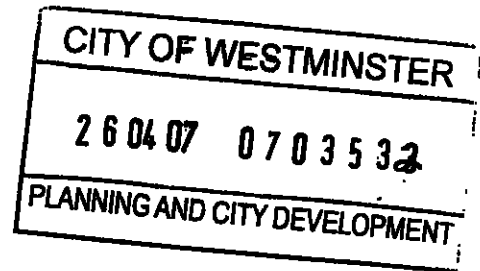
PLEASE NOTE:

THERE ARE 35 SITES IN CAMDEN (THE SITE NUMBERS GIVEN DO NOT USE ALL NUMBERS SEQUENTIALLY).  
THERE ARE ALSO 10 SITES IN CAMDEN.

1. Applicant

DANIELLE CHIDLOW  
THE NATIONAL GALLERY  
ST VINCENT HOUSE  
30 ORANGE STREET

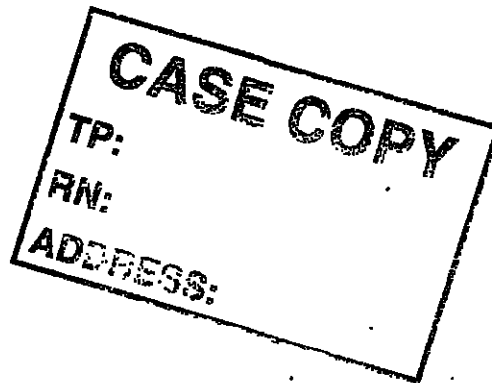
Post  
LONDON Code: WC2  
020 7747 2839



Agent (if any) to whom correspondence will be sent:

DONNA HEMLEY  
THE PARTNERS  
ALBION COURTYARD  
GREENHILL RENTS

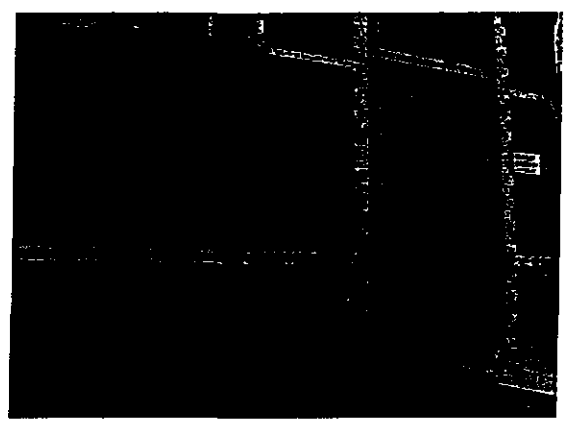
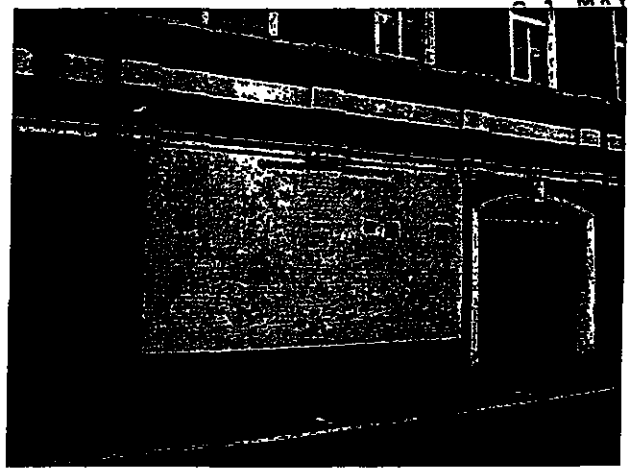
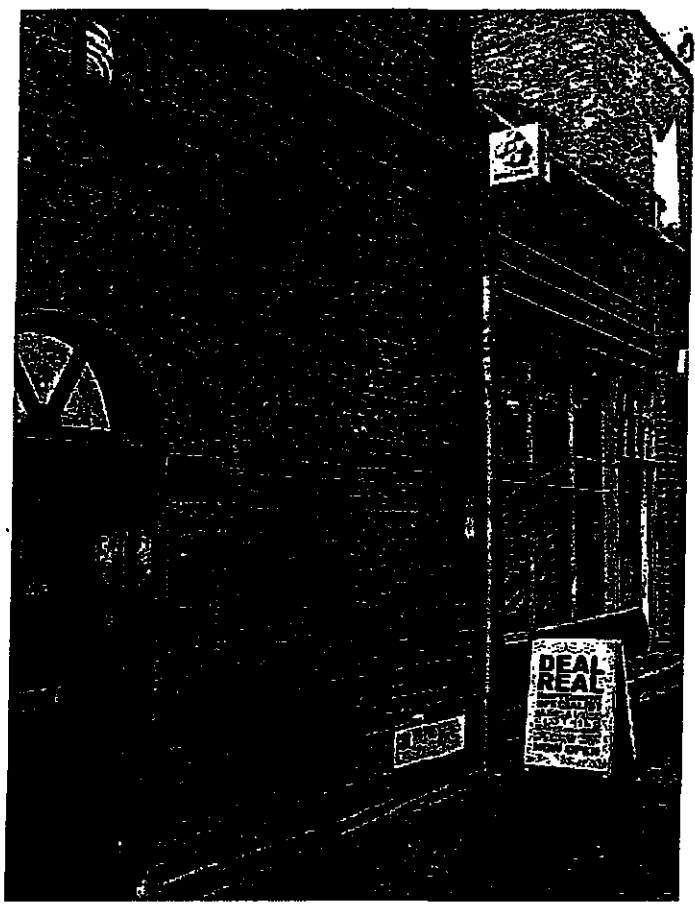
Post  
LONDON Code:  
020 7689 4603 Ref: THE GRAND TOUR





Plan D3 - typical locations **FILE COPY APPROVE**

MAY 2007



2007/2229/P

Plan A - Project Site 38 - Shelton Street

**FILE COPY**  
**2007/2229/P**



270cm width



Bacchus and Ariadne  
1520-3  
TITIAN  
about 1487 - 1576

**CASE COPY**  
TP:  
RN:  
ADDRESS:

**PLANS APPROVED**

21 MAY 2007

CITY OF WESTMINSTER  
16 04 07 - 07 03 5 J 2  
DEPARTMENT OF PLANNING AND CITY DEVELOPMENT

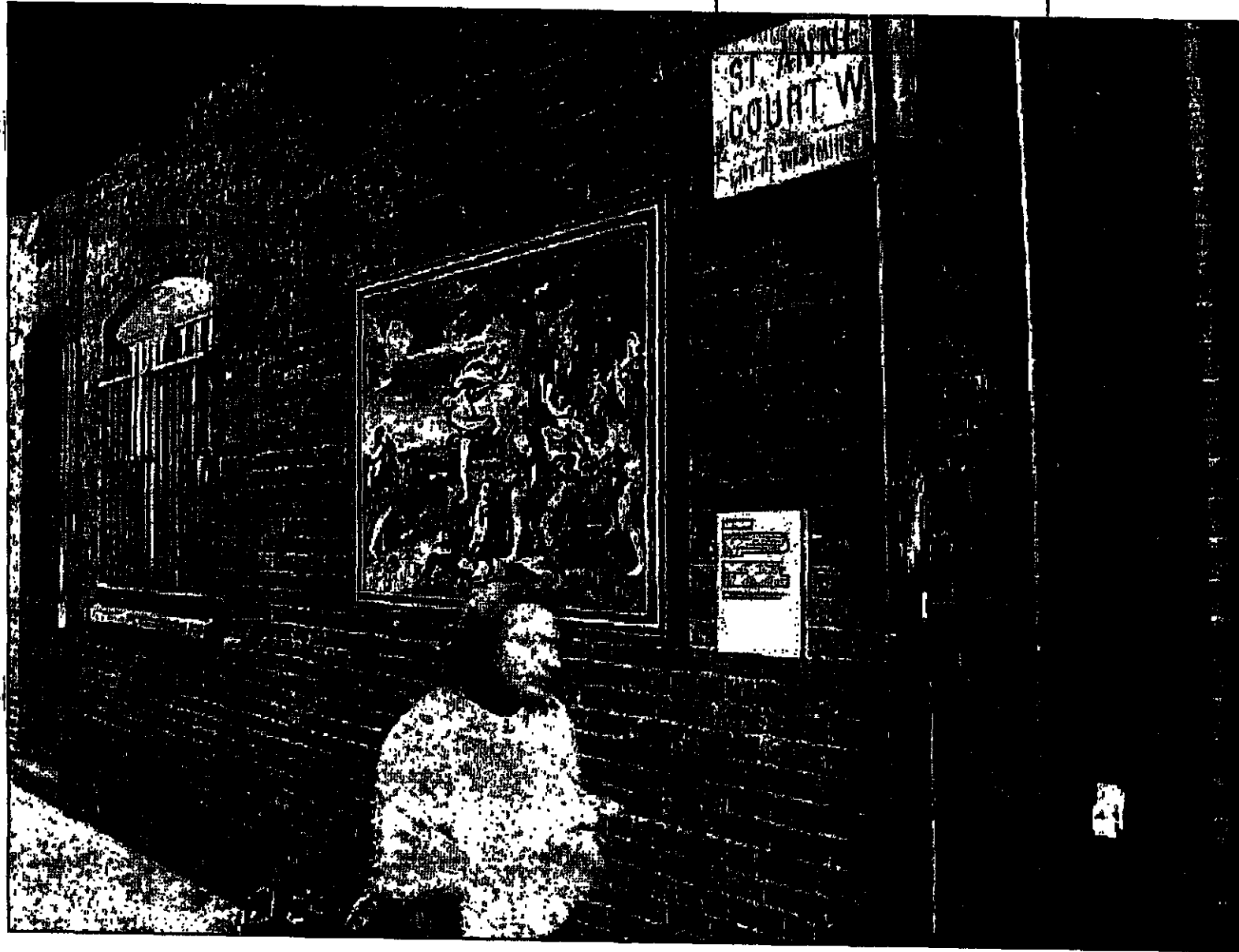
London Graphic Centre,  
16-18 Sheldon Street,  
Covent Garden,  
London WC2H 9JL

Plan C - Project visual

CITY OF WESTMINSTER

1 6 04 07 - 0 7 0 3 5 3.2

2007/2229/P



FILE COPY

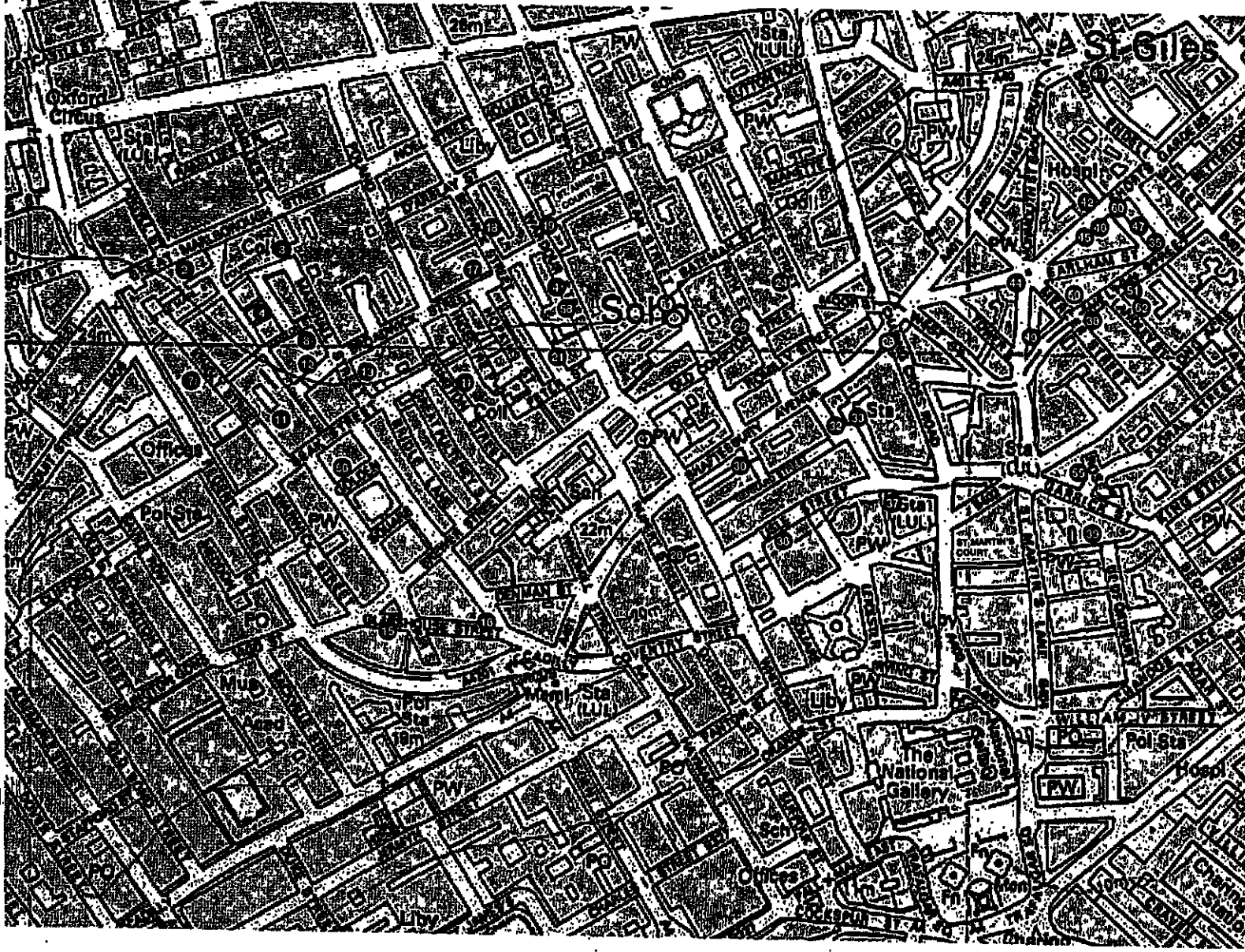
CASE COPY  
TP:  
RN:  
ADDRESS:

PLANS APPROVED

21 MAY 2007

2007/2229/P

Plan E - Project locations map - 45 locations applied for



**PLANS APPROVED**

**OVERSEEN**

**FILE COPY**

**CASE COPY**

CITY OF WESTMINSTER

DEPARTMENT OF PLANNING AND CITY DEVELOPMENT

21 MAY 2007

RN: 27

FD: 2