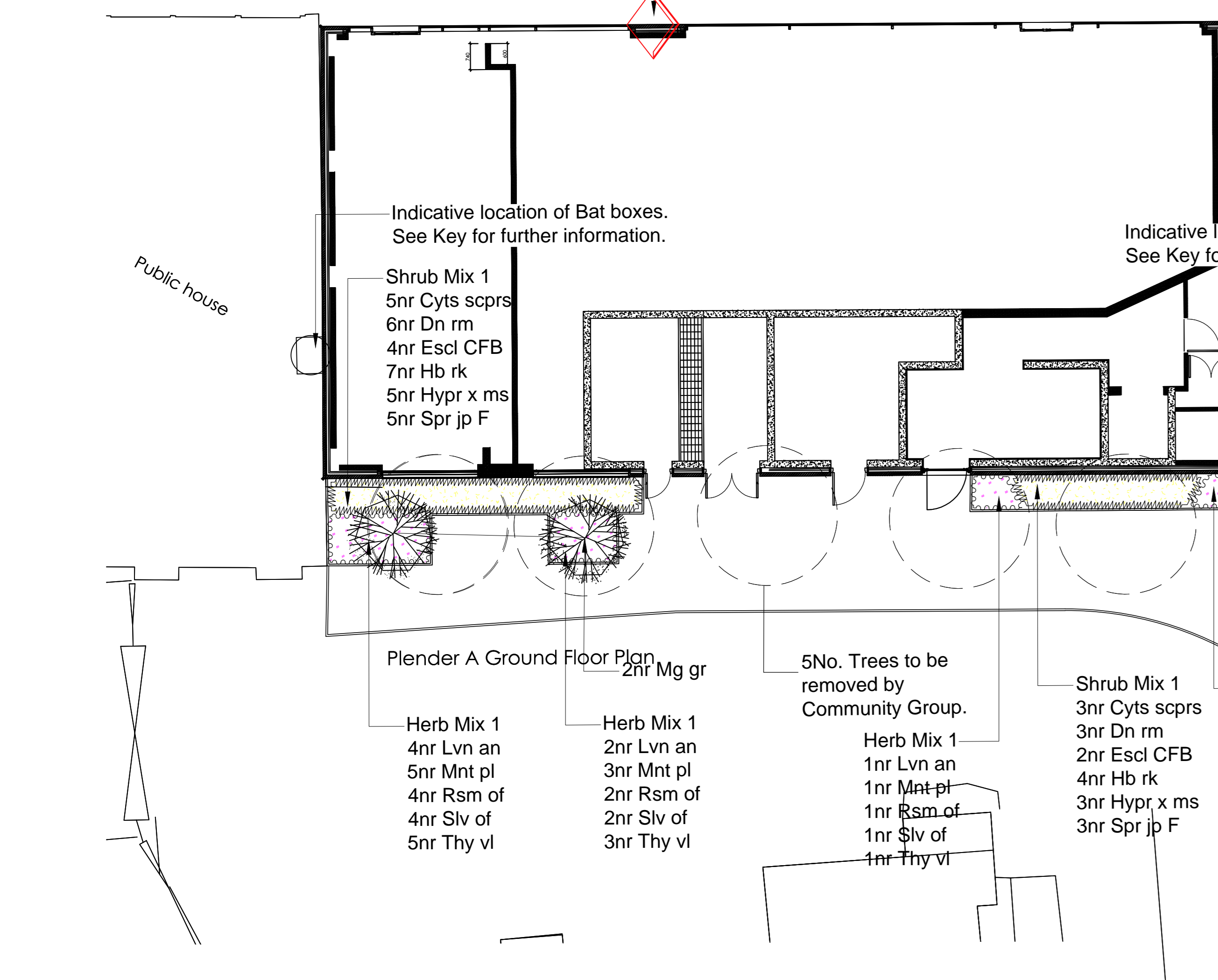


Indicative location of Swift bird boxes.
See Key for further information.



PLANTING SCHEDULE

Table with columns: Qty, Abb. Text, Species, Form, Age, Grth, Height, Clear Stem, Root. Rows include various tree species like Ailanthus glandifolia, Malus sylvestris, Prunus avium.

Small Tree Planting

Table with columns: Qty, Abb. Text, Species, Root, Container, 200mm. Rows include Magnolia grandiflora.

Hedge Mix 1 (4 plants per linear metre)

Table with columns: Qty, Abb. Text, Species, Container, Habit, Height, C, Root, Mix %. Rows include Aucuba japonica, Crataegus monogyna, Cornus avellana, Prunus spinosa, Rosa canina.

Specimen Shrub Planting

Table with columns: Qty, Abb. Text, Species, Container, Habit, Height, Root. Rows include Choisya ternata, Choisya ternata 'Sunderland', Elaeagnus x eboracensis, Escallonia 'Apple Blossom', Fatsia japonica, Hydrydium mc. BW, Hydrydium mc. MEM, Phym. YW.

Shrub Planting

Table with columns: Qty, Abb. Text, Species, Container, Habit, Height, Root, Centres (m). Rows include Cornus sanguinea.

Shrub Mix 1 Planting

Table with columns: Qty, Abb. Text, Species, Container, Habit, Height, Root, Centres (m), Mix %. Rows include various shrub species like Cotoneaster, Ligustrum, etc.

Herb Mix 1 Planting

Table with columns: Qty, Abb. Text, Species, Container, Habit, Height, Root, Centres (m), Mix %, Propagation Method. Rows include various herbaceous plants like Anemone, Ranunculus, etc.

Climber Planting

Table with columns: Qty, Abb. Text, Species, Container, Habit, Height, Root, Centres (m). Rows include Jasminum officinale, Loroneira periclymenum.

Indicative location of Swift bird boxes.
See Key for further information.

Shrub Mix 1
6nr Cyts scprs
7nr Dn rm
5nr Escl CFB
8nr Hb rk
6nr Hypr x ms
6nr Spr jp F

Herb Mix 1
2nr Lvn an
3nr Mnt pl
2nr Rsm of
2nr Slv of
3nr Thy vl

Shrub Mix 1
1nr Cyts scprs
1nr Dn rm
1nr Escl CFB
1nr Hb rk
1nr Hypr x ms
1nr Spr jp F

Herb Mix 1
3nr Lvn an
4nr Mnt pl
3nr Rsm of
3nr Slv of
4nr Thy vl

Herb Mix 1
3nr Lvn an
4nr Mnt pl
3nr Rsm of
3nr Slv of
4nr Thy vl

Herb Mix 1
1nr Lvn an
2nr Mnt pl
1nr Rsm of
1nr Slv of
2nr Thy vl

Herb Mix 1
1nr Lvn an
2nr Mnt pl
1nr Rsm of
1nr Slv of
2nr Thy vl

Herb Mix 1
1nr Lvn an
2nr Mnt pl
1nr Rsm of
1nr Slv of
2nr Thy vl

Herb Mix 1
1nr Lvn an
2nr Mnt pl
1nr Rsm of
1nr Slv of
2nr Thy vl

PLANTING SPECIFICATION (as per Employer's Requirements)

EXISTING TREES AND SHRUBS: Where existing trees & shrubs are to be retained they should be subject to a full arboricultural inspection for safety. Any survey required shall be in accordance with BS 3998 (2010) 'Tree Work'...

PLANTING: All plants and planting to comply with the requirements of all current / relevant British Standard specifications including BS 3866 Part 1 (1992), Part 2 (1988) and Part 4 (1994) and BS 4084 (1989) where applicable, BS 4453 (1999) and the BAU / J.I. Nursery Trade Tender Document (5th Edition 1966). All plants to be supplied in accordance with the plant schedule...

TURF SEEDING AREAS: Grass seeding generally to BS 4428. When topsoil is reasonably dry and workable, grade to smooth, blowing contours, removing all minor hollows and ricks. Cultivate soil to fall depth and apply any necessary topsoil. Apply approved herbicide to control perennial weeds...

PROTECTIVE FENCING: All planted areas shall be protected with chestnut pale fencing, where directed, until completion of the Contract. The contractor shall maintain fencing until all site works are completed. The contractor will then remove the fencing and reinstiate the ground...

TURF AREAS: TURF AREAS - ESTABLISHMENT CUT: Walk all grass areas to maintain healthy ground. When grass is 50mm high remove weeds, litter and any stones later in dry conditions on grass to between 25-30mm. Remove and dispose of all arising.

GRASS SEEDING AREAS: Grass seeding generally to BS 4428. When topsoil is reasonably dry and workable grade to smooth, blowing contours, removing all minor hollows and ricks. Cultivate soil to fall depth and break up any compacted topsoil. Apply approved herbicide to control perennial weeds...

TURF AREAS: ESTABLISHMENT CUT: Walk all grass areas to maintain healthy ground. When grass is 50mm high remove weeds, litter and any stones later in dry conditions on grass to between 25-30mm. Remove and dispose of all arising.

GRASS SEEDING AREAS: Regular visits (minimum 20 No.) required during the defects liability period to maintain all planted areas in a weed and litter free condition using a combination of chemical spray and hand weeding to be agreed with the Landscape Architect. Structure planting areas shall be maintained as non-competitive weed free environment by repeated applications of a glyphosate based herbicide...

GRASS SEEDING AREAS: Buffers planting: Buffers and whips will be planted in prepared pits 600mm diameter x 600mm deep for leaved trees and 300mm diameter x 300mm deep for whips. Each plant shall be placed upright in the centre of the pit with the roots exposed upwards and downwards without restriction, and balled with topsoil to BS 3862: 2007, incorporating Fines Free Planting Compost at a rate of 10% by volume. Weeding shall be carried out as necessary to maintain healthy growth or as required by the Landscape Architect.

TURF AREAS: TURF AREAS - ESTABLISHMENT CUT: Walk all grass areas to maintain healthy ground. When grass is 50mm high remove weeds, litter and any stones later in dry conditions on grass to between 25-30mm. Remove and dispose of all arising.

GRASS SEEDING AREAS: Regular visits (minimum 20 No.) required during the defects liability period to maintain all planted areas in a weed and litter free condition using a combination of chemical spray and hand weeding to be agreed with the Landscape Architect. Structure planting areas shall be maintained as non-competitive weed free environment by repeated applications of a glyphosate based herbicide...

GRASS SEEDING AREAS: Buffers planting: Buffers and whips will be planted in prepared pits 600mm diameter x 600mm deep for leaved trees and 300mm diameter x 300mm deep for whips. Each plant shall be placed upright in the centre of the pit with the roots exposed upwards and downwards without restriction, and balled with topsoil to BS 3862: 2007, incorporating Fines Free Planting Compost at a rate of 10% by volume. Weeding shall be carried out as necessary to maintain healthy growth or as required by the Landscape Architect.

CONSTRUCTION WORK BELOW TREES TO BE RETAINED

Prior to any works beginning on site, identify all trees / hedgerows shown as being retained on the approved layout drawings. All trees and hedgerows to be retained are to be fenced off with waist-high panels securely fixed to scaffold poles (or similar) spaced to the full extent of root protection areas for the duration of the work on site.

Where works below the canopy of existing trees to be retained is unavoidable, locally erected protective fencing as described above to achieve a minimal working zone.

Where tree roots of over 250mm are encountered, these should remain undamaged in-situ and excavations, if any, carefully undertaken around them. Advice of a suitably qualified arboricultural consultant should be sought if it becomes necessary to cut any root material of greater than 25mm diameter.

Where tree roots of over 250mm are encountered, these should remain undamaged in-situ and excavations, if any, carefully undertaken around them. Advice of a suitably qualified arboricultural consultant should be sought if it becomes necessary to cut any root material of greater than 25mm diameter.

Where tree roots of over 250mm are encountered, these should remain undamaged in-situ and excavations, if any, carefully undertaken around them. Advice of a suitably qualified arboricultural consultant should be sought if it becomes necessary to cut any root material of greater than 25mm diameter.

Where tree roots of over 250mm are encountered, these should remain undamaged in-situ and excavations, if any, carefully undertaken around them. Advice of a suitably qualified arboricultural consultant should be sought if it becomes necessary to cut any root material of greater than 25mm diameter.

Where tree roots of over 250mm are encountered, these should remain undamaged in-situ and excavations, if any, carefully undertaken around them. Advice of a suitably qualified arboricultural consultant should be sought if it becomes necessary to cut any root material of greater than 25mm diameter.

Where tree roots of over 250mm are encountered, these should remain undamaged in-situ and excavations, if any, carefully undertaken around them. Advice of a suitably qualified arboricultural consultant should be sought if it becomes necessary to cut any root material of greater than 25mm diameter.

Where tree roots of over 250mm are encountered, these should remain undamaged in-situ and excavations, if any, carefully undertaken around them. Advice of a suitably qualified arboricultural consultant should be sought if it becomes necessary to cut any root material of greater than 25mm diameter.

Where tree roots of over 250mm are encountered, these should remain undamaged in-situ and excavations, if any, carefully undertaken around them. Advice of a suitably qualified arboricultural consultant should be sought if it becomes necessary to cut any root material of greater than 25mm diameter.

Where tree roots of over 250mm are encountered, these should remain undamaged in-situ and excavations, if any, carefully undertaken around them. Advice of a suitably qualified arboricultural consultant should be sought if it becomes necessary to cut any root material of greater than 25mm diameter.

Where tree roots of over 250mm are encountered, these should remain undamaged in-situ and excavations, if any, carefully undertaken around them. Advice of a suitably qualified arboricultural consultant should be sought if it becomes necessary to cut any root material of greater than 25mm diameter.

- Notes: 1. This drawing has been prepared in accordance with the scope of RPS's agreement with its client and is subject to the terms and conditions of that agreement. RPS accepts no liability for any use of this document other than by its client and only for the purposes for which it was prepared and provided. 2. If received electronically it is the recipient's responsibility to print to correct scale. Only written dimensions should be used.

