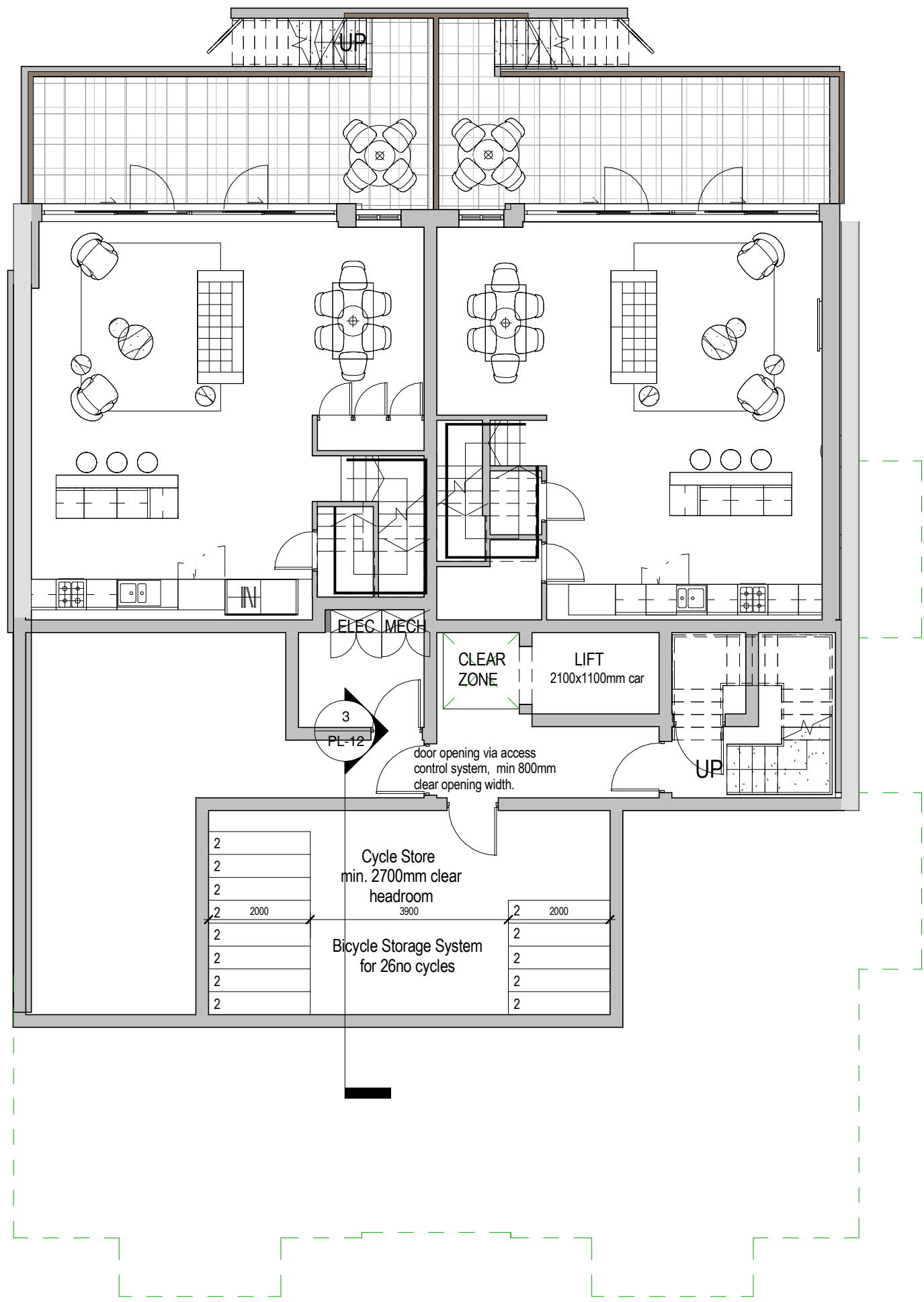
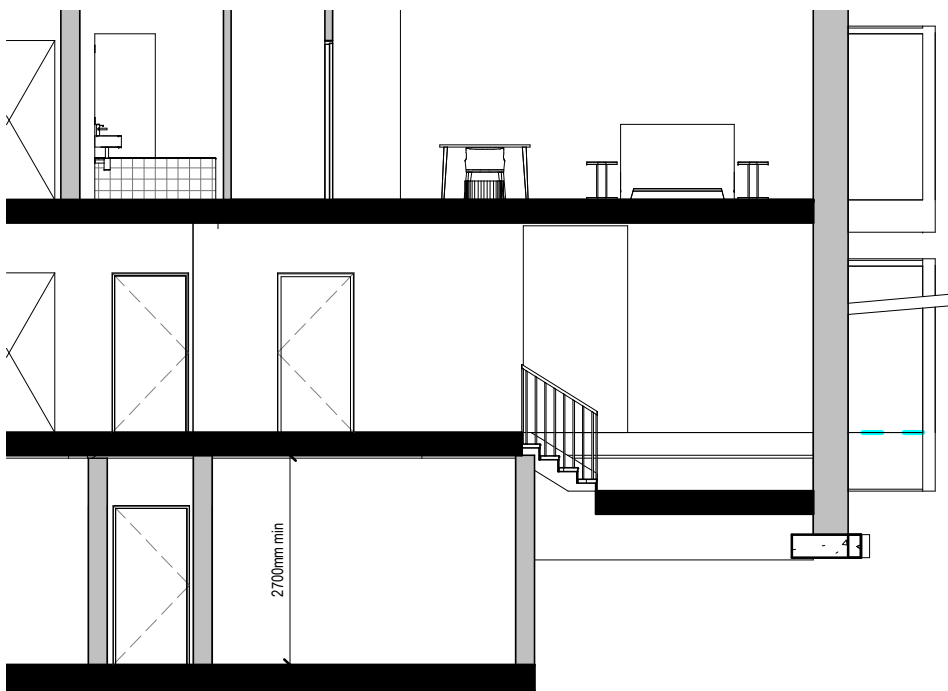
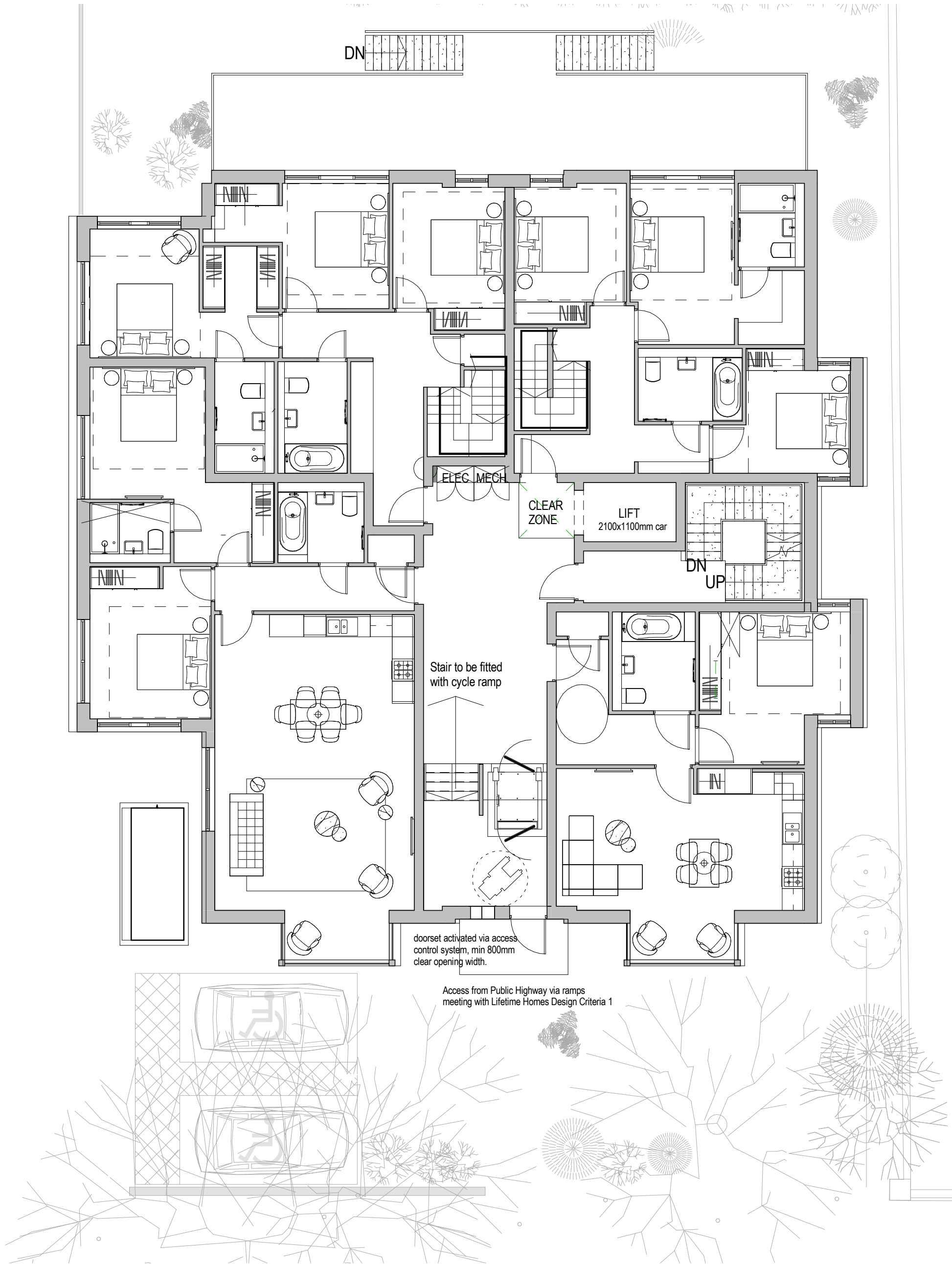


This drawing is copyright and shall not be reproduced or used for any other purpose without the written permission of the Architects.  
This drawing must be read in conjunction with all other related drawings and documentation.  
It is the contractors responsibility to ensure full compliance with the Building Regulations.  
Do not scale from this drawing, use figured dimensions only.  
It is the contractors responsibility to check and verify all dimensions on site.  
Any discrepancies to be reported immediately.  
IF IN DOUBT ASK.  
Materials not in conformity with relevant British or European Standards/Codes of practice or materials known to be deleterious to health & safety must not be used or specified on this project.  
Materials known to contain asbestos contaminated materials (ACM's) in the manufacture or installation process have not been specified and must not be used on this project



Cycle Storage - Lower Ground Floor  
1 : 100



Section 19  
1 : 100



Image of Stair Ramp



Image of Cycle Storage System

A	05.10.15	Cycle Storage system revised Cycle Storage Room reconfigured to suit (reduced). Section added. Ground floor updated.	CH	DRJ
No	Date	Description	By	Ckd

CLIENT

**ASHBURY & BLOOM**  
SETTING TRENDS IN PROPERTY DEVELOPMENT

PROJECT  
264-270 FINCHLEY ROAD

TITLE  
Cycle Storage

DRAWING STATUS

DRAWN	Author	CHECKED	Checker
SCALE	1 : 100 @ A1		
DATE	08/21/15		

**wcec**architects  
South Building, Staple Inn Buildings  
London, WC1V 7PZ  
t:020 3388 0019, e: email@wcec.co.uk, www.wcec.co.uk

JOB NO.	DRAWING NO.	REV
15-470	PL-12	A