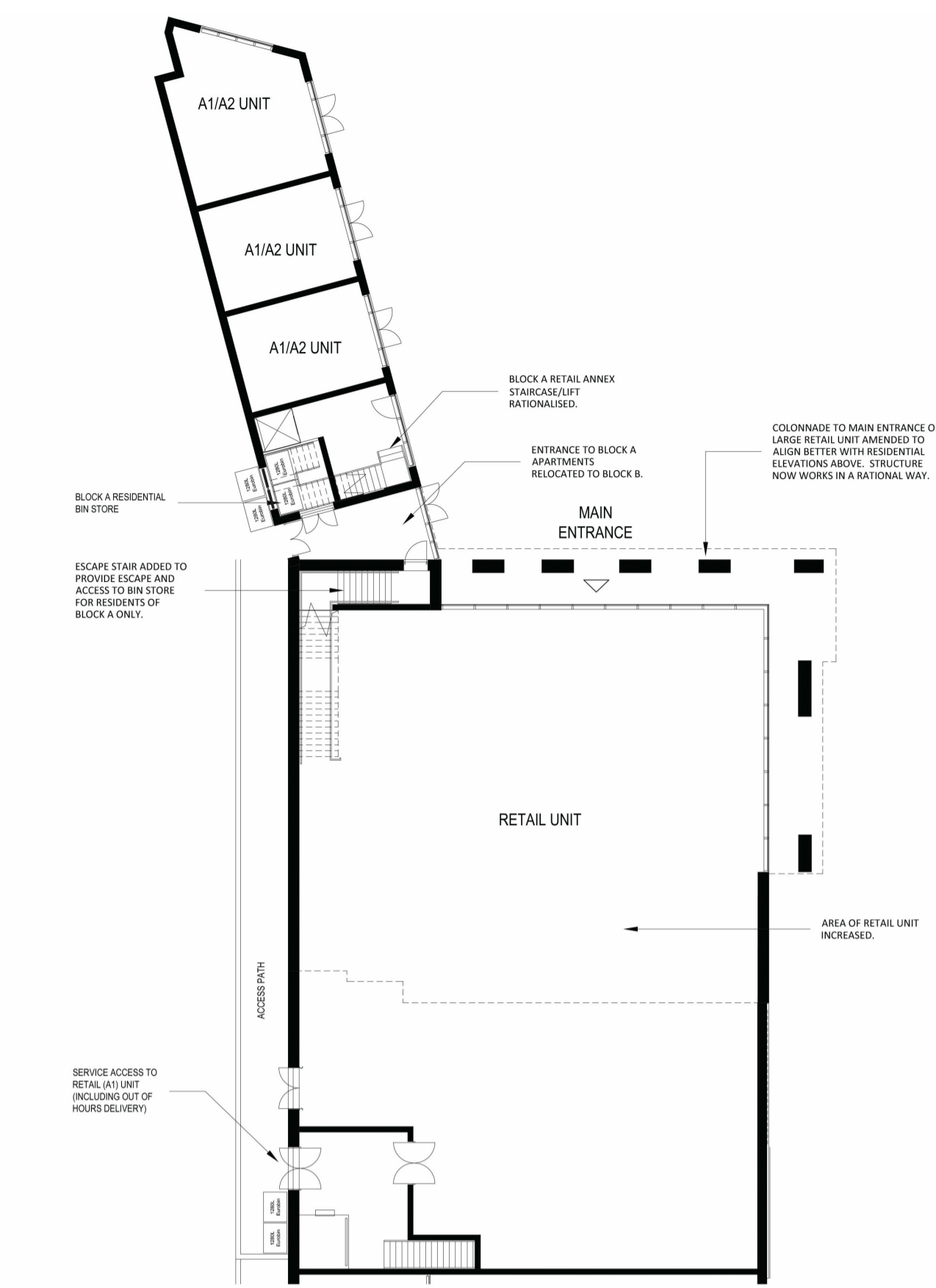
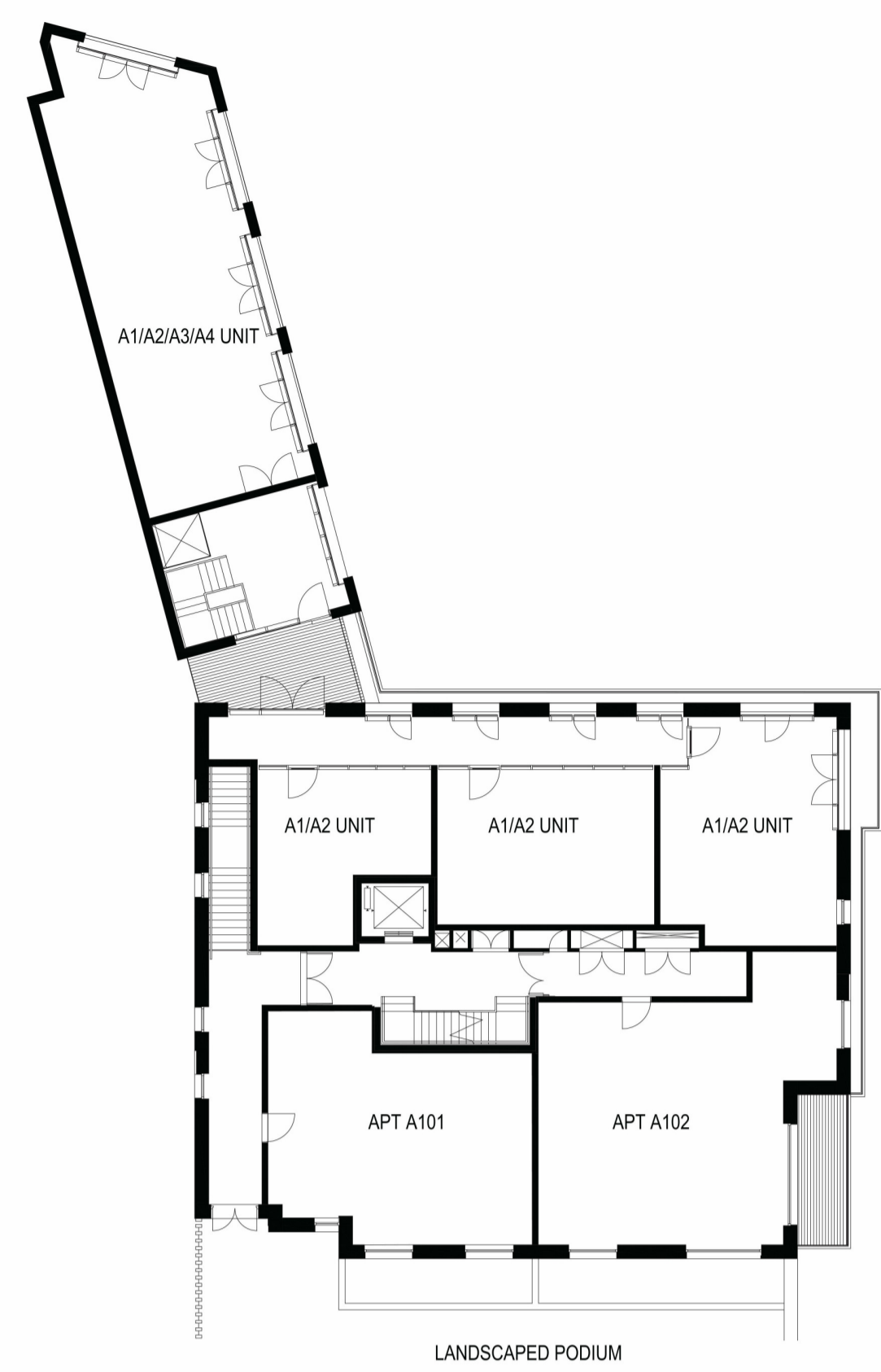


This drawing is copyright and shall not be reproduced or used for any other purpose without the written permission of the Architects.
 It is the contractors responsibility to ensure full compliance with the Building Regulations.
 Do not scale from this drawing, use figured dimensions only.
 It is the contractors responsibility to check and verify all dimensions on site.
 Any discrepancies to be reported immediately.
 IF IN DOUBT ASK.
 Materials not in conformity with relevant British or European Standards/Codes of practice or materials known to be deleterious to health & safety must not be used or specified on this project.
 Materials known to contain asbestos contaminated materials (ACM's) in the manufacture or installation process have not been specified and must not be used on this project.



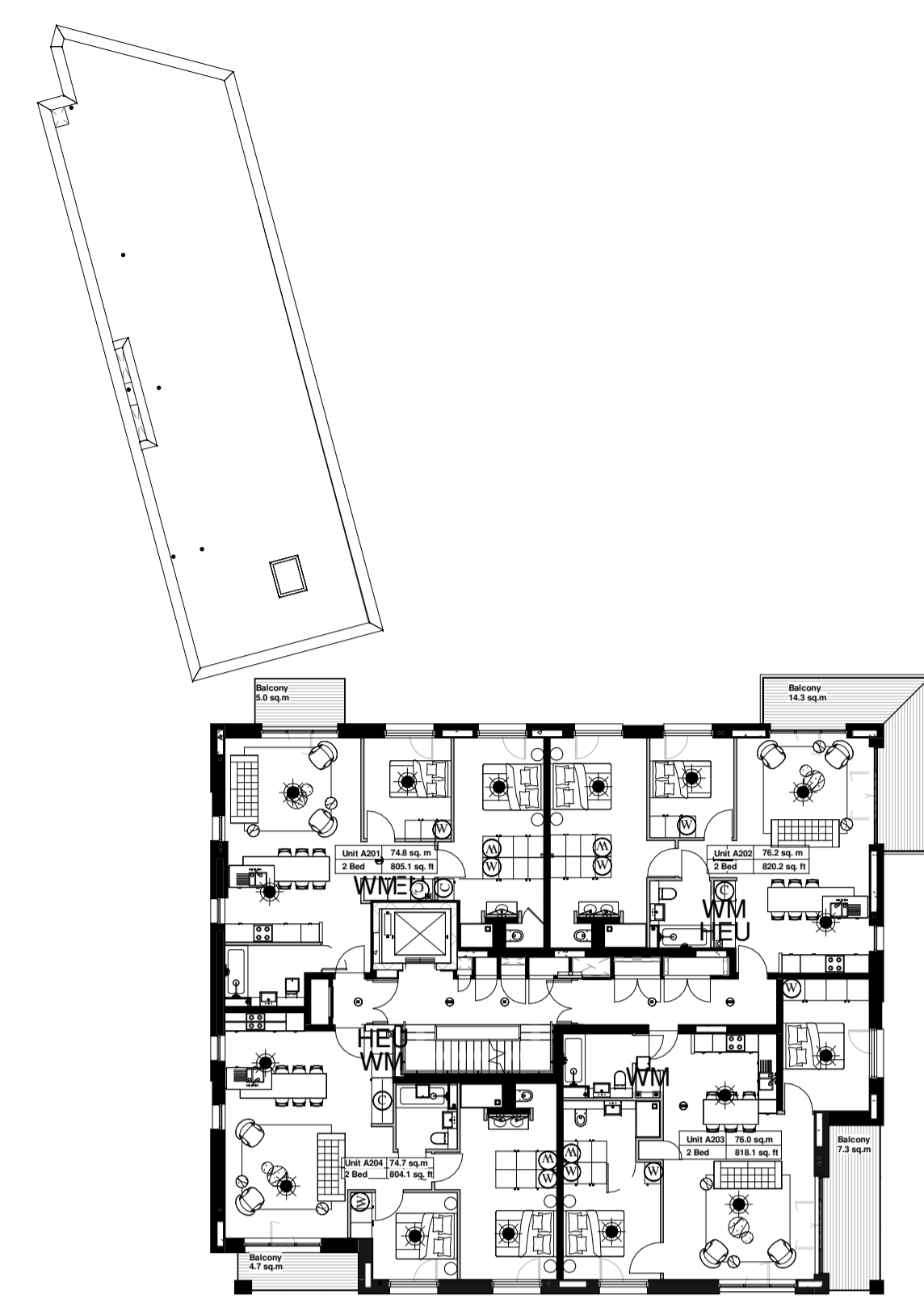
PROPOSED BLOCK A GROUND FLOOR PLAN

BLOCK A GROUND FLOOR PLAN
 Refer to WCEC Drawing No 12-316-PL-25
 Approved Under Application Ref 2013/6627/P

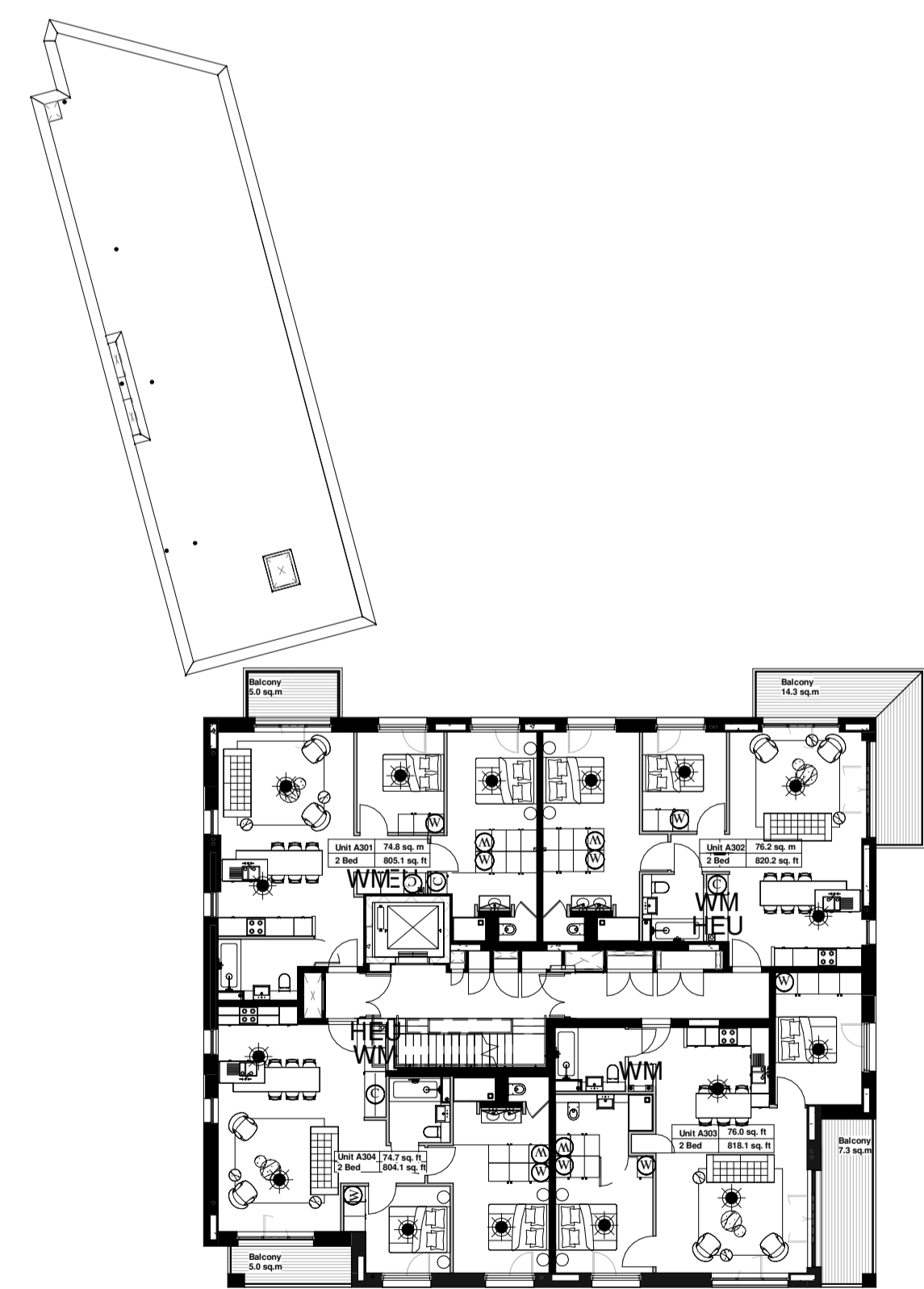


PROPOSED BLOCK A FIRST FLOOR PLAN

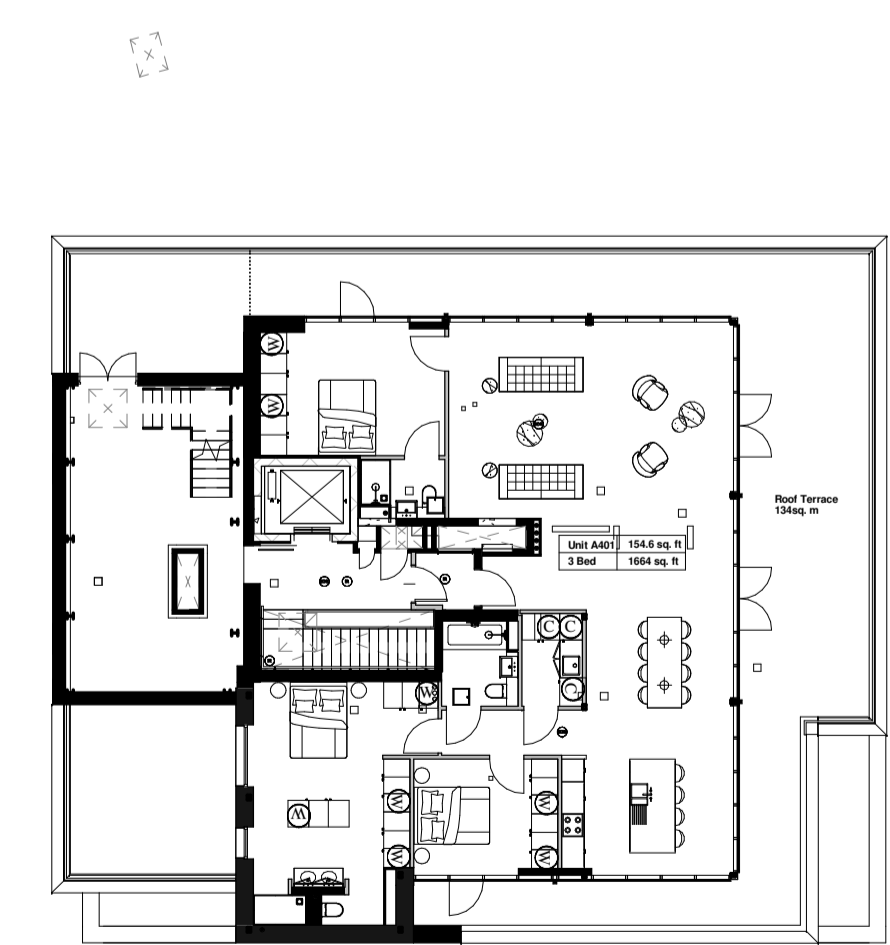
BLOCK A FIRST FLOOR PLAN
 Refer to WCEC Drawing No 12-316-PL-26
 Approved Under Application Ref 2013/6627/P



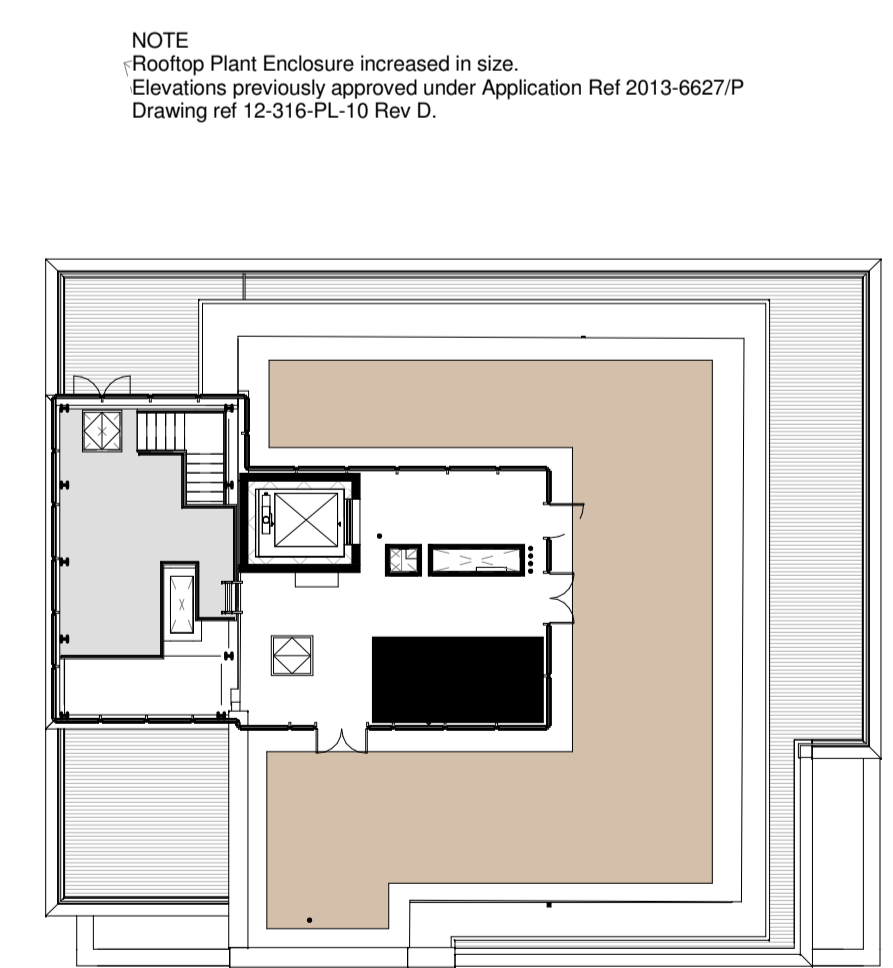
BLOCK A SECOND FLOOR PLAN
 Approved Under Application Ref 2013/1924/P



BLOCK A THIRD FLOOR PLAN
 Approved Under Application Ref 2013/1924/P



BLOCK A FOURTH FLOOR PLAN
 Approved Under Application Ref 2013/1924/P



BLOCK A ROOF PLAN

No	Date	Description	By	Ckd
C	22.09.15	Ground Floor and First Floor Plans added	DRJ	JA
B	11.07.15	First Floor Omitted. Approval References added. Roof Plan updated to co-ordinate with GA Elevations previously approved.	AM	DRJ
A	23.05.13	Amended in line with comments received via email on the 13.05.2013 @ 1552	AKS	JA



PROJECT
 West Hampstead Square

TITLE
 Block A Plans

DRAWING STATUS
 Construction

DRAWN AKS CHECKED JA

SCALE 1 : 200 @ A1

DATE 22/05/13

wcec architects
 31-35 Kirby Street, Farringdon
 London, EC1N 8TE

t:020 3388 0019, e: email@wcec.co.uk, www.wcec.co.uk

JOB NO.	DRAWING NO.	REV
12-316	PL01	C