

CAMDEN PLANNING  
DEPARTMENT  
18 AUG 1970  
YOL \_\_\_\_\_ NO \_\_\_\_\_  
ACK \_\_\_\_\_  
REFERRED TO \_\_\_\_\_

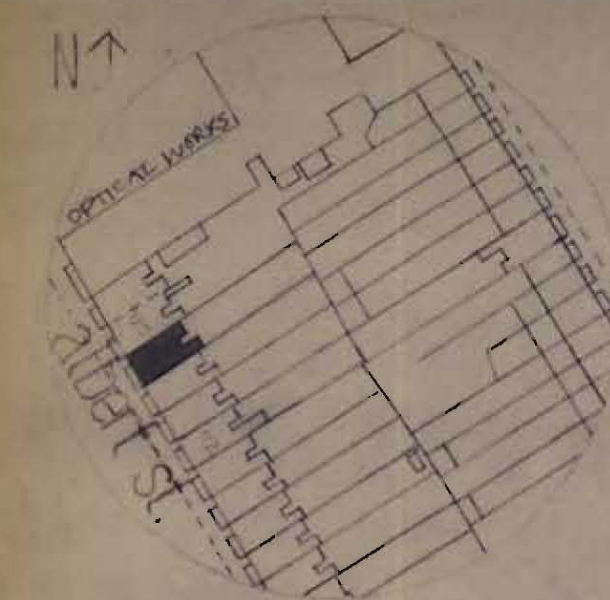
CHAPMAN LISLE ASSOCIATES ARCHITECTS  
57 THE CHASE LONDON SW4 01 622 4847

12.4  
118 Albert St NW1  
proposed plan  
1/4" = 1'

CTP/511/17/18/9499

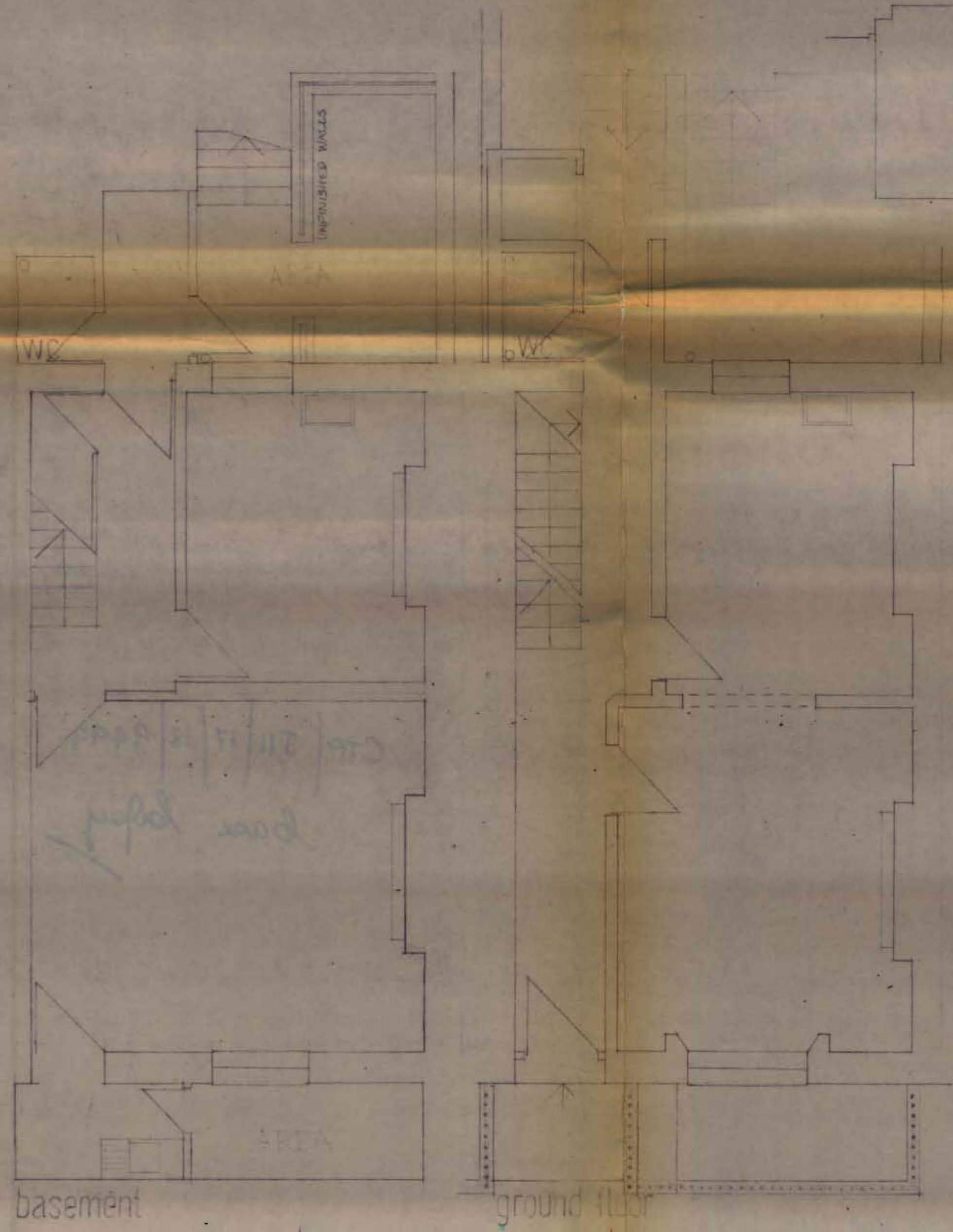
16.8.70





site location plan

section



basement

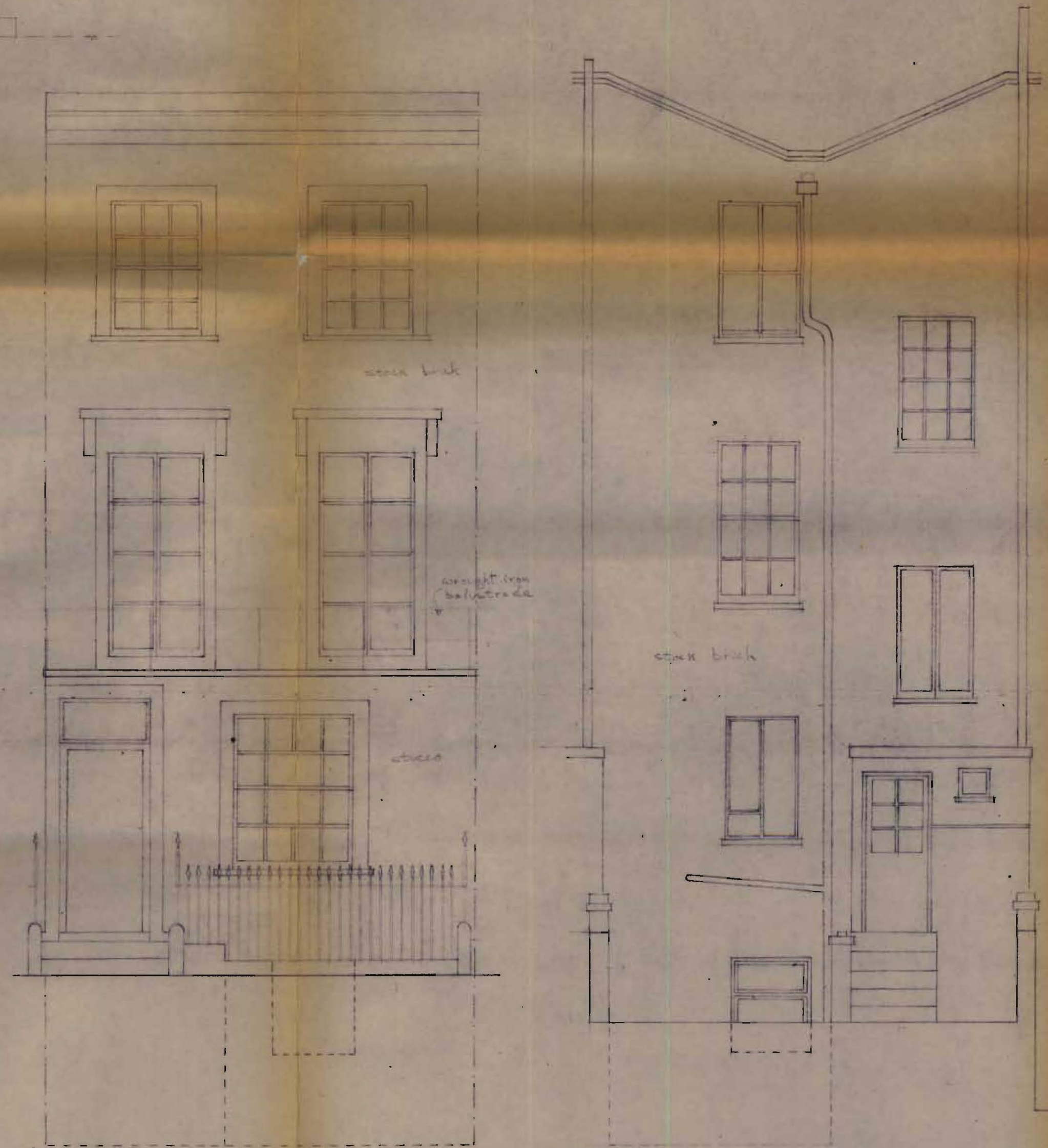
ground floor

1st floor

2nd floor plan

front elev.

rear elev.



CAMDEN PLANNING  
DEPARTMENT  
18 AUG 1970  
VOL. \_\_\_\_\_ NO. \_\_\_\_\_  
ACK. \_\_\_\_\_  
REFERRED TO \_\_\_\_\_

CHAPMAN LISLE ASSOCIATES  
57 THE CHASE LONDON SW4

ARCHITECTS  
01 622 4843

12-2

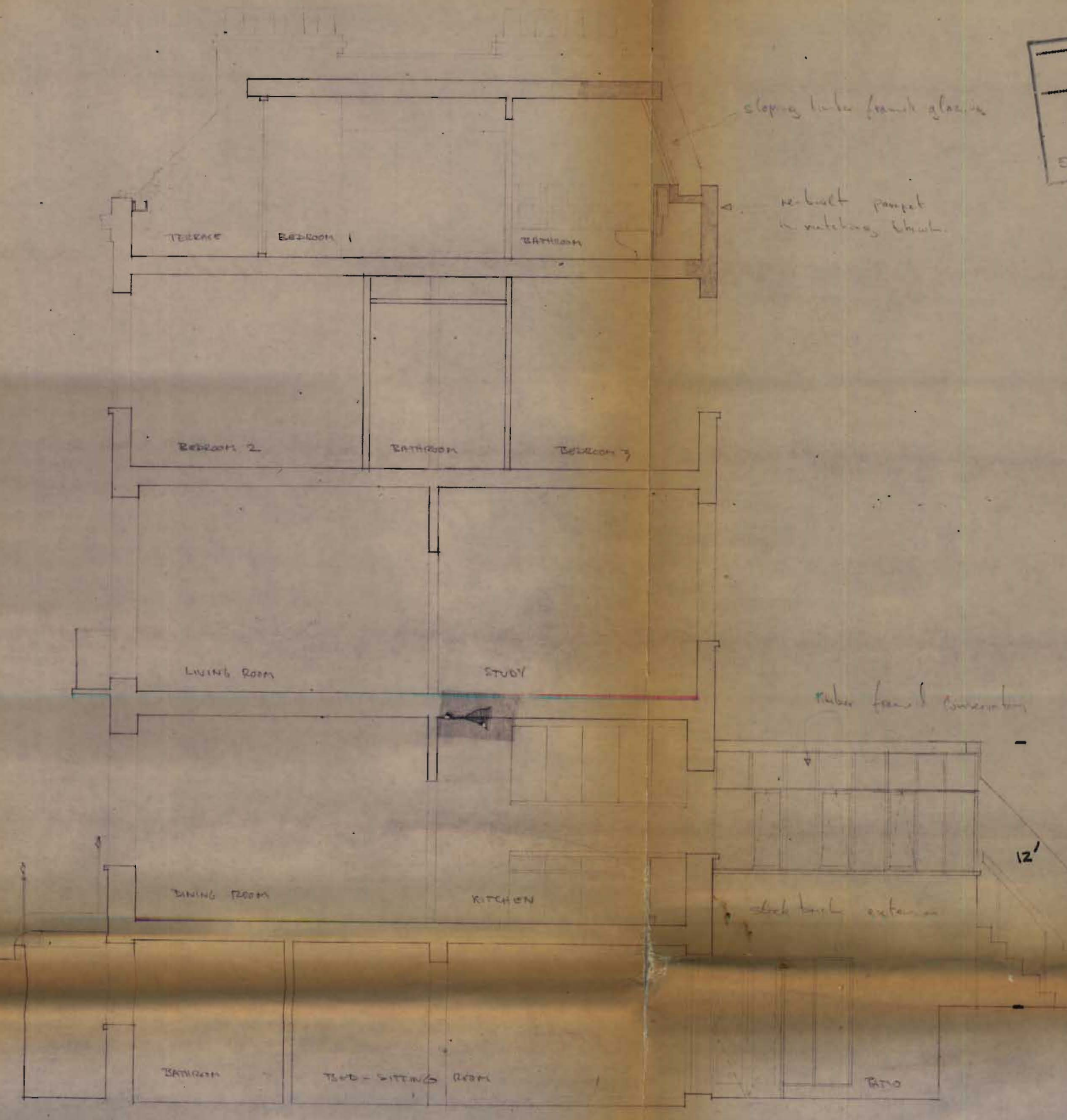
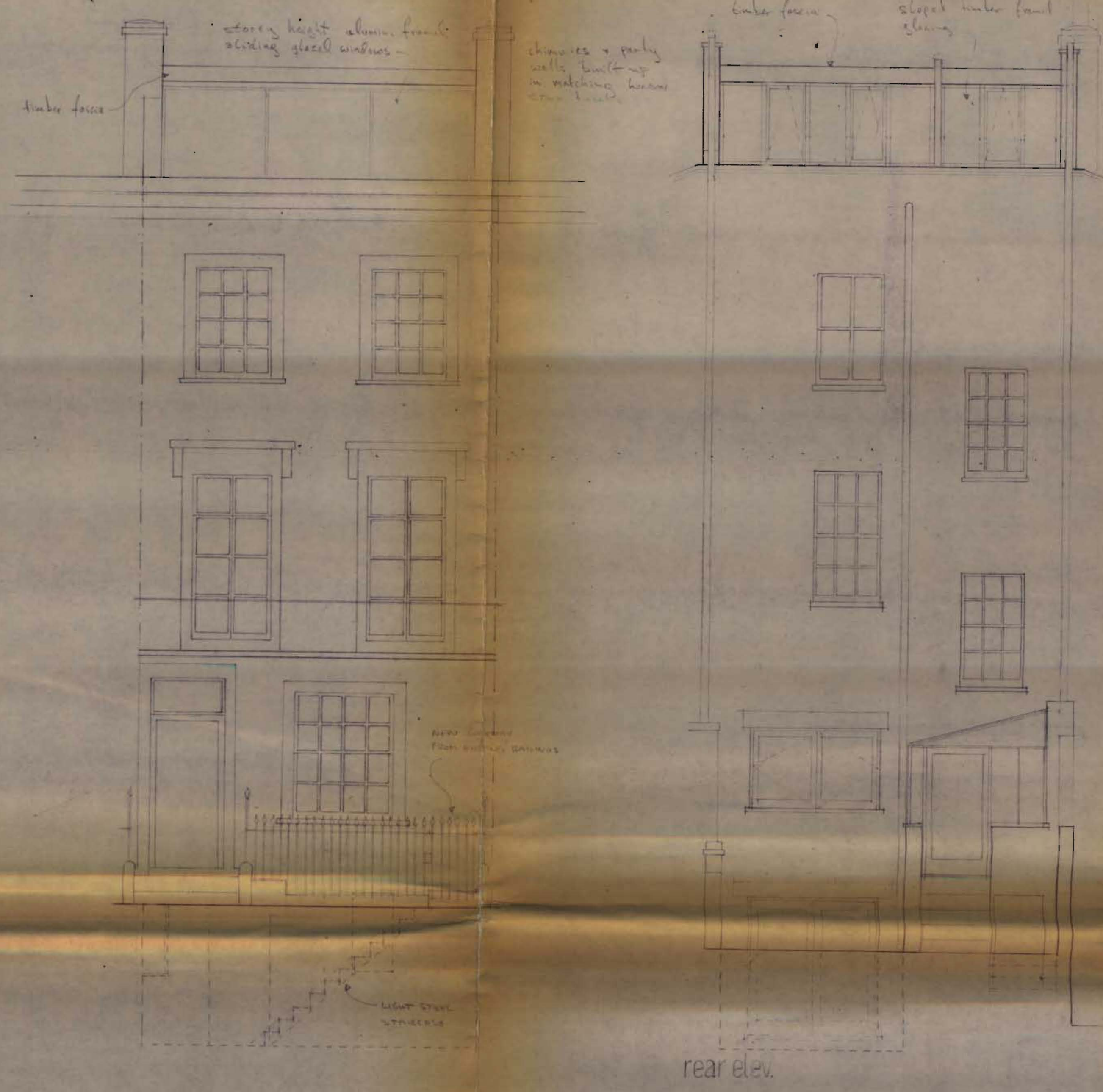
118 Albert St. NW1  
as existing  
1/4" = 1'

CTP/511/12/18/1999

17.6.70



RECEIVED TO  
 13 AUG 70  
 DEPARTMENT  
 CAMDEN PLANNING



CAMDEN PLANNING  
 DEPARTMENT  
 13 AUG 1970

LONDON BOROUGH OF CAMDEN  
 SET PLANS APPROVED  
 27 OCT 1970  
 ON BEHALF OF THE COUNCIL

GIP/SM/17/18/9499

CHAPMAN LISLE ASSOCIATES ARCHITECTS  
 57 THE CHASE LONDON SW4 01 622 4843

118 Albert St. NW1  
 proposed section + elevations

12.3

16.8.70