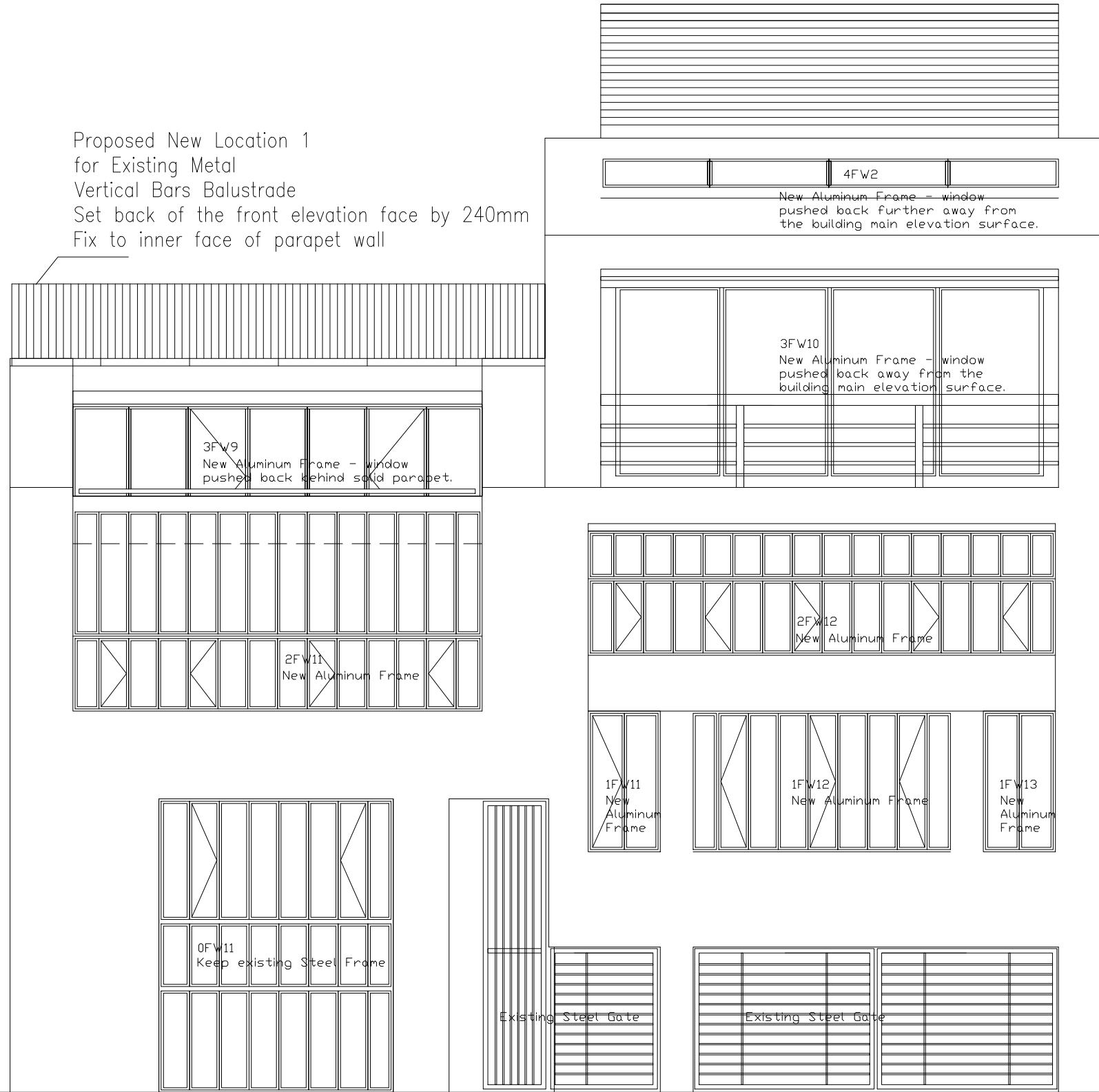


Proposed New Location 1  
for Existing Metal  
Vertical Bars Balustrade  
Set back of the front elevation face by 240mm  
Fix to inner face of parapet wall



18-19 Jockeys Fields, WC1R, London  
Front Elevation - Windows replacement & Balustrades Addition  
1:70 @ A3  
January 2015 - Update/Variation Sep 2015

Proposed windows

New Aluminum Frame Windows with double glazing to comply with the current Building Regulations requirements -  
Frame colour gray to match existing steel windows frame