

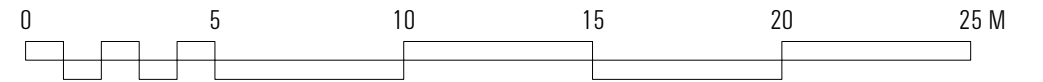
GROUND FLOOR PLAN

PROPOSED

REVISIONS  
 REV A - 19.11.14 AMENDED FOLLOWING PRE-APPLICATION ADVICE  
 PROJECT: 400 - 14 HATTON WALL, LONDON, EC1N 8JN  
 DWG. TITLE: PROPOSED - GROUND FLOOR PLAN  
 DWG. NO.: 400\_102A  
 SCALE: 1:50 @A3  
 DATE: 18.06.13  
 ISSUE: INFORMATION

400

EMULSION  
 6 BAKER'S YARD LONDON EC1R 3DD  
 T: 020 8127 1015 F: 020 8127 1016 E: CONTACT@EMULSIONARCHITECTURE.COM  
 DO NOT SCALE: ALL DIMENSIONS TO BE CHECKED ON SITE. DO NOT REPRODUCE DRAWING. COPYRIGHT EMULSION LTD.



STREET FRONT ELEVATION

||||| REV B - 03.02.15 AMENDED FOLLOWING PLANNER'S COMMENTS  
 ||||| REV A - 19.11.14 AMENDED FOLLOWING PRE-APPLICATION ADVICE

||||| PROJECT: 400 - 14 HATTON WALL, LONDON, EC1N 8JN  
 ||||| DWG. TITLE: STREET FRONT ELEVATION - PROPOSED  
 ||||| DWG. NO.: 400\_201B  
 ||||| SCALE: 1:200 @A3  
 ||||| DATE: 25.07.12  
 ||||| ISSUE: INFORMATION

||||| **400**

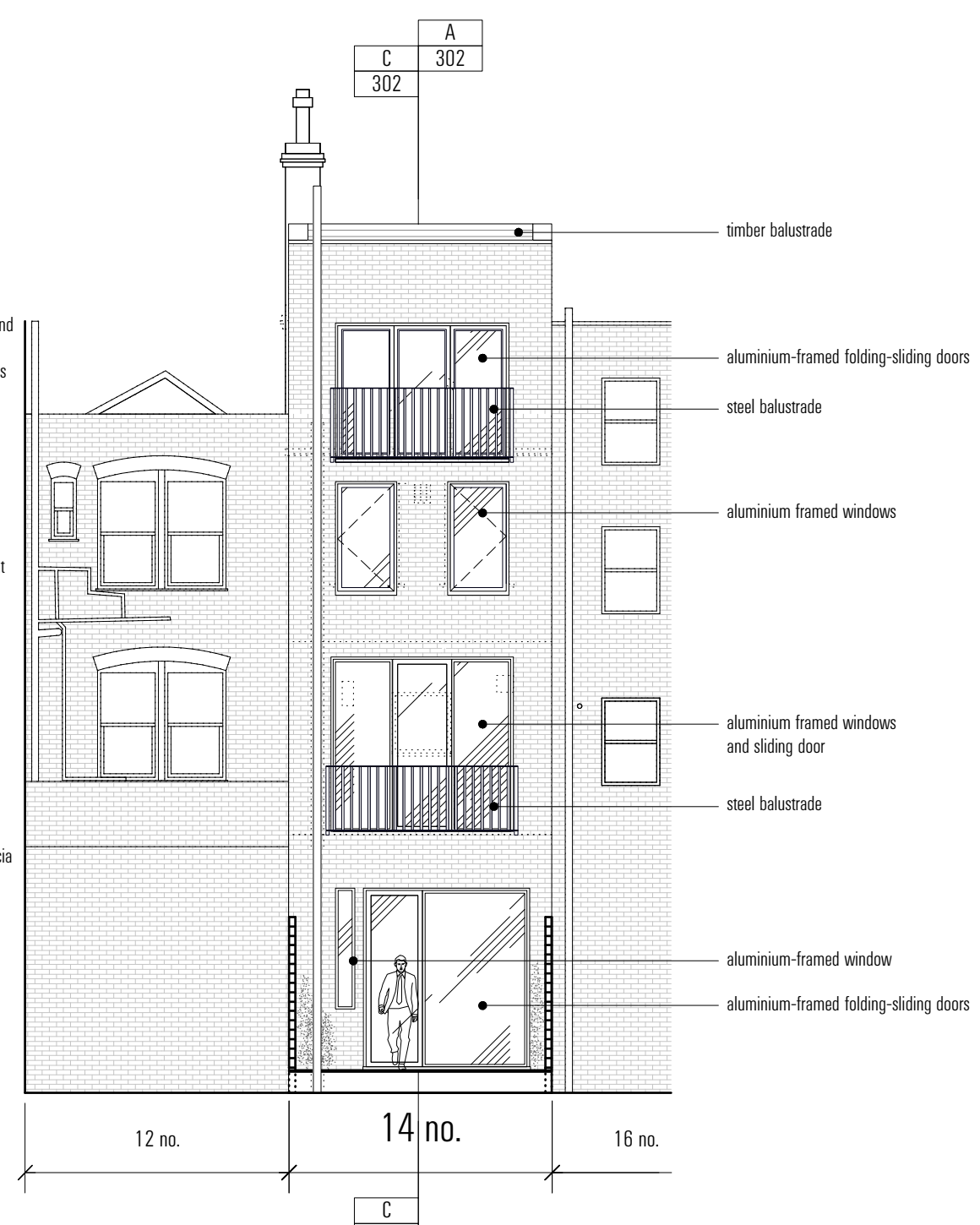
PROPOSED

STREET FRONT ELEVATION

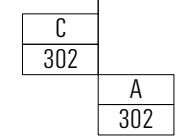
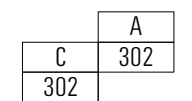
||||| EMULSION  
 ||||| 6 BAKER'S YARD LONDON EC1R 3DD  
 ||||| T: 020 8127 1015 F: 020 8127 1016 E: CONTACT@EMULSIONARCHITECTURE.COM  
 ||||| DO NOT SCALE: ALL DIMENSIONS TO BE CHECKED ON SITE. DO NOT REPRODUCE DRAWING: COPYRIGHT EMULSION LTD.



FRONT ELEVATION



REAR ELEVATION



- timber balustrade
- stone capped party wall
- zinc clad mansard
- zinc clad dormer surround
- aluminium-framed doors
- metal balustrade
- like-for-like replacement timber double-glazed sash windows
- new painted timber fascia
- new timber door
- new concrete step

- timber balustrade
- aluminium-framed folding-sliding doors
- steel balustrade
- aluminium framed windows
- aluminium framed windows and sliding door
- steel balustrade
- aluminium-framed window
- aluminium-framed folding-sliding doors

REVISIONS:  
 REVISION 1: REV B - 03.02.15 AMENDED FOLLOWING PLANNER'S COMMENTS  
 REVISION 2: REV A - 19.11.14 AMENDED FOLLOWING PRE-APPLICATION ADVICE

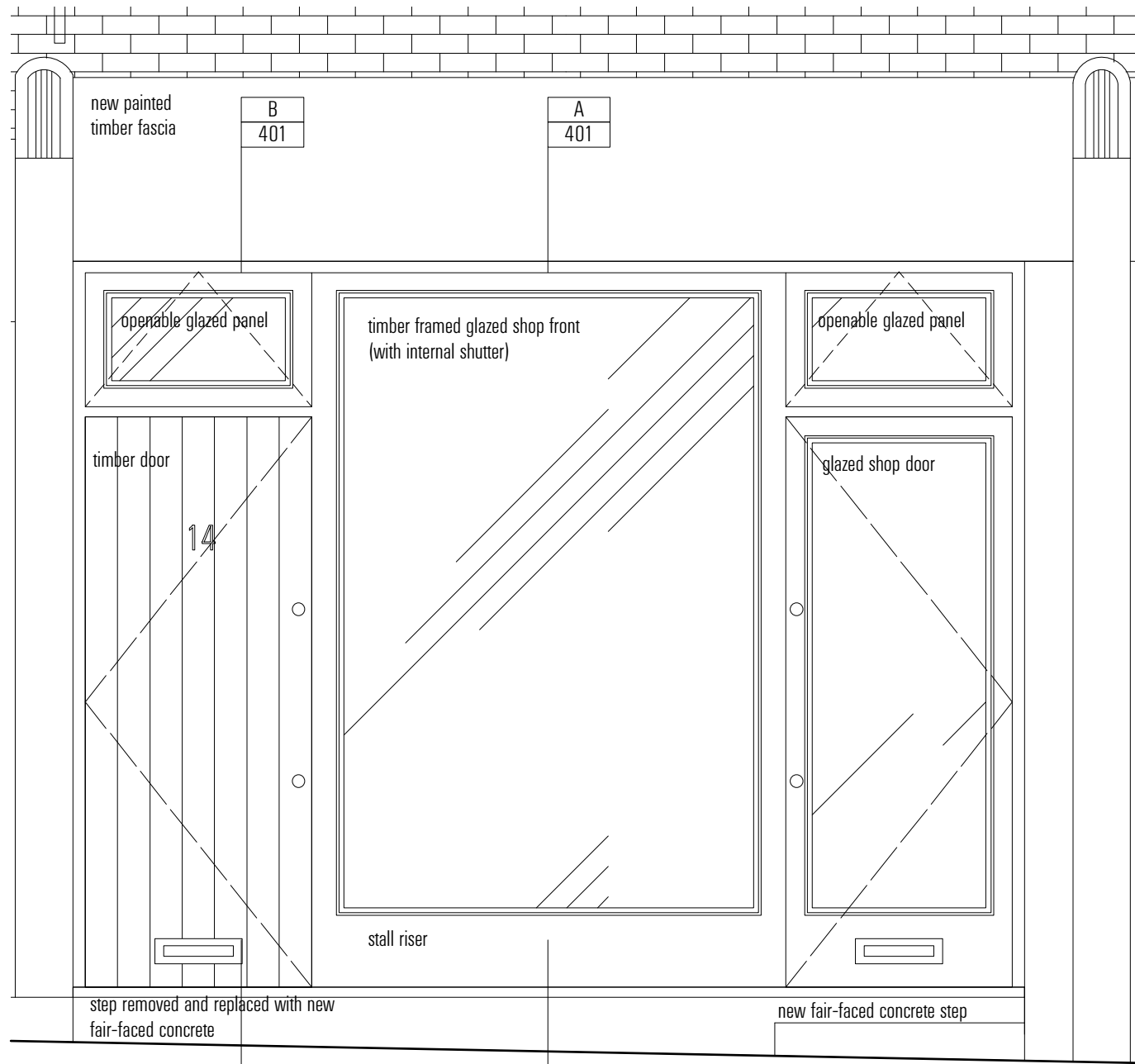
PROJECT: 400 - 14 HATTON WALL, LONDON, EC1N 8JN  
 DWG. TITLE: FRONT AND REAR ELEVATIONS - PROPOSED  
 DWG. NO.: 400\_202B  
 SCALE: 1:100 @A3  
 DATE: 25.07.12  
 ISSUE: INFORMATION

**400**

PROPOSED

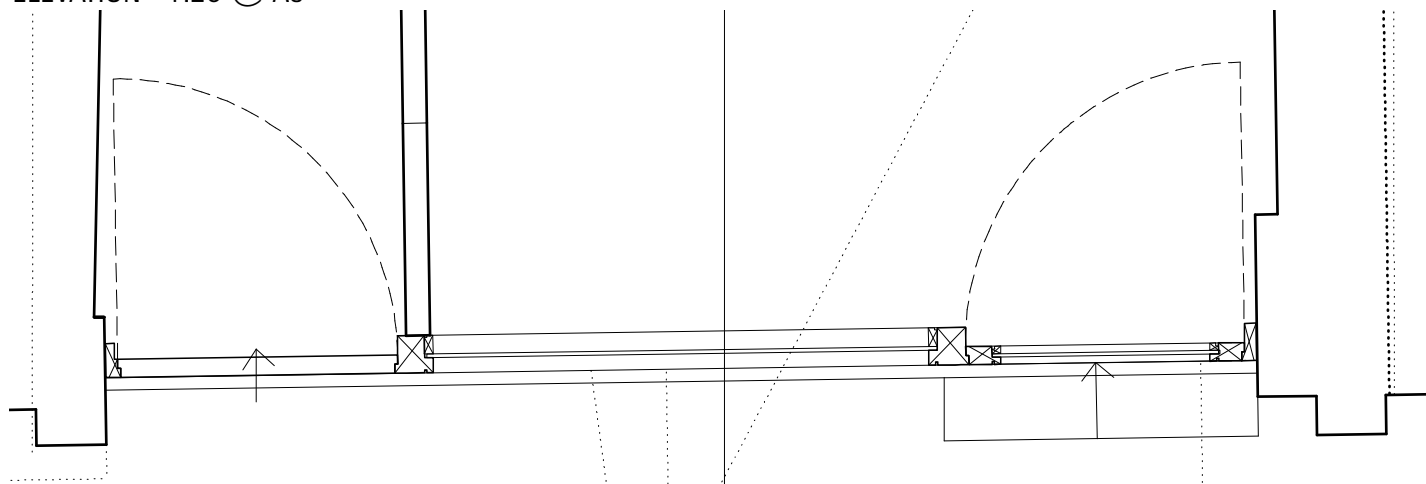
FRONT AND REAR ELEVATIONS

EMULSION  
 6 BAKER'S YARD LONDON EC1R 3DD  
 T: 020 8127 1015 F: 020 8127 1016 E: CONTACT@EMULSIONARCHITECTURE.COM  
 DO NOT SCALE: ALL DIMENSIONS TO BE CHECKED ON SITE. DO NOT REPRODUCE DRAWING: COPYRIGHT EMULSION LTD.

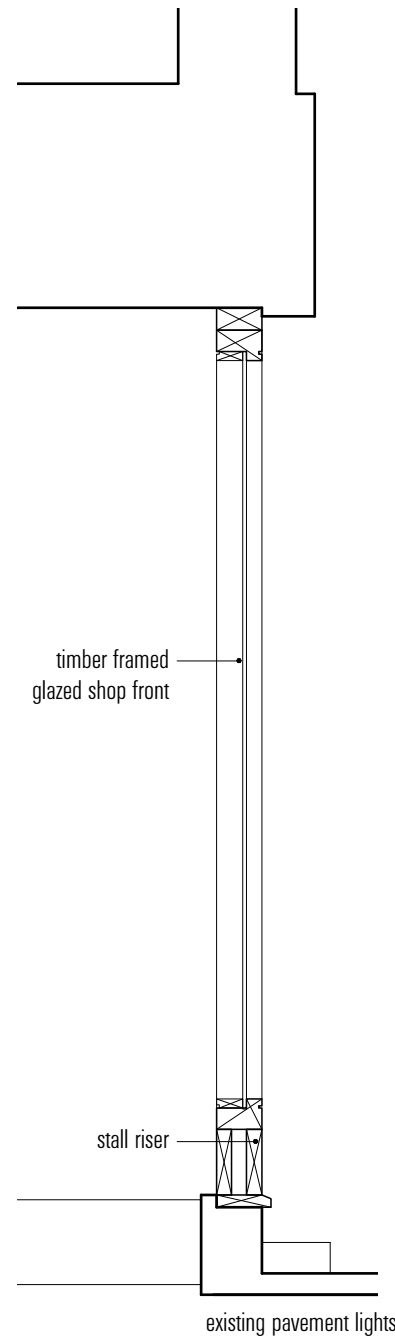


PROPOSED FRONT ELEVATION 1:25 @ A3

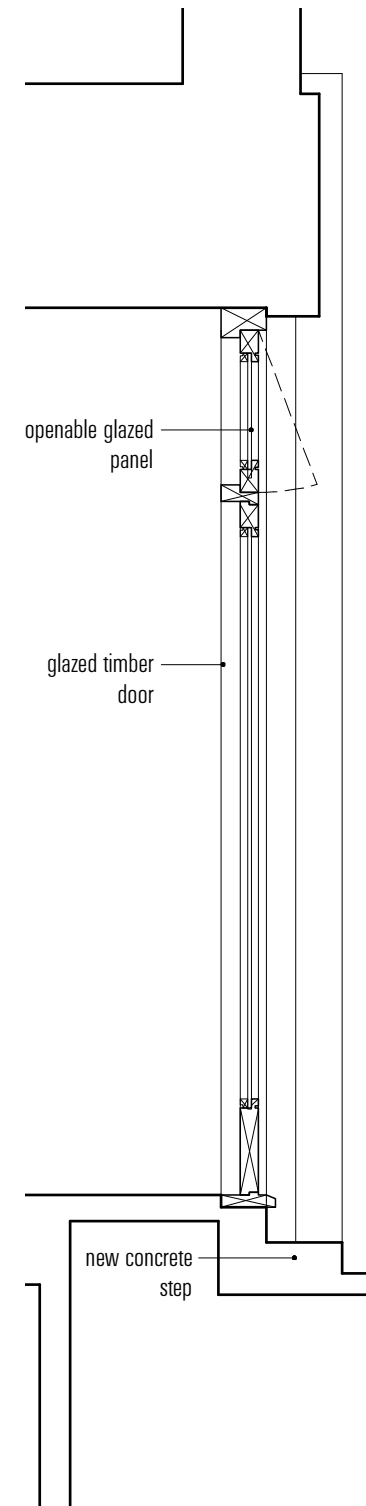
B 401 A 401



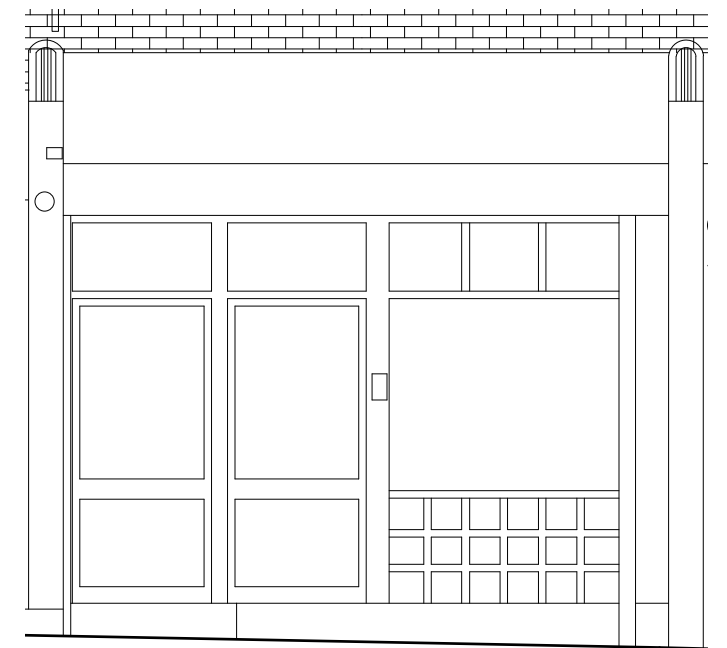
PROPOSED ENTRANCE PLAN 1:25 @ A3



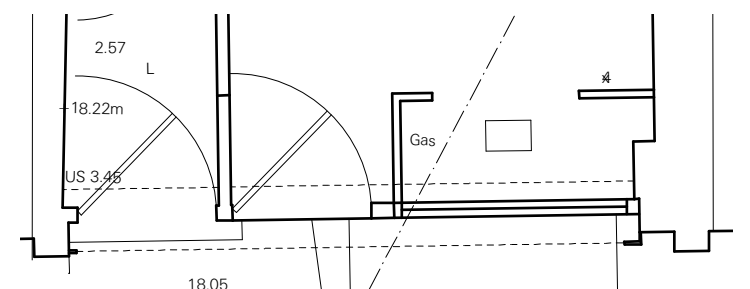
PROPOSED SECTION A 1:25 @ A3



PROPOSED SECTION B 1:25 @ A3



EXISTING FRONT ELEVATION 1:25 @ A3



EXISTING ENTRANCE PLAN 1:50 @ A3

REVISIONS  
 REV A - 03.02.15 AMENDED FOLLOWING PLANNER'S COMMENTS

PROJECT: 400 - 14 HATTON WALL, LONDON, EC1N 8JN  
 DWG. TITLE: SHOPFRONT ELEVATION - EXISTING + PROPOSED  
 DWG. NO.: 400\_401A  
 SCALE: 1:25 / 1:50 @A3  
 DATE: 19.11.14  
 ISSUE: INFORMATION

400

PROPOSED

EMULSION  
 6 BAKER'S YARD LONDON EC1R 3DD  
 T: 020 8127 1015 F: 020 8127 1016 E: CONTACT@EMULSIONARCHITECTURE.COM  
 DO NOT SCALE: ALL DIMENSIONS TO BE CHECKED ON SITE. DO NOT REPRODUCE DRAWING: COPYRIGHT EMULSION LTD.