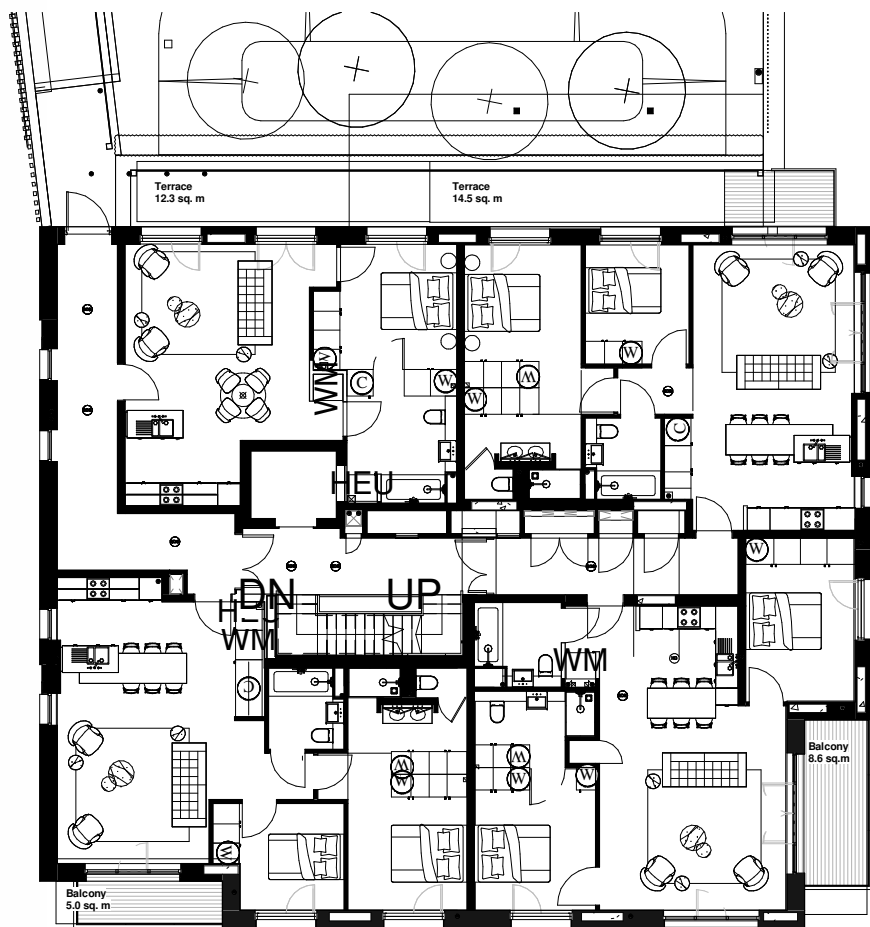
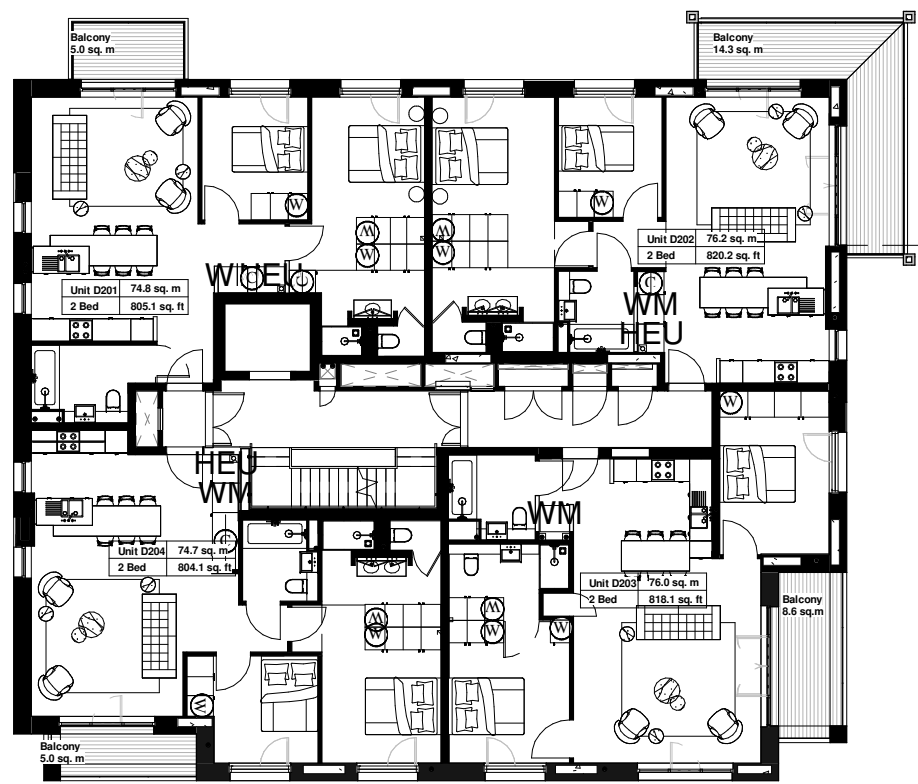


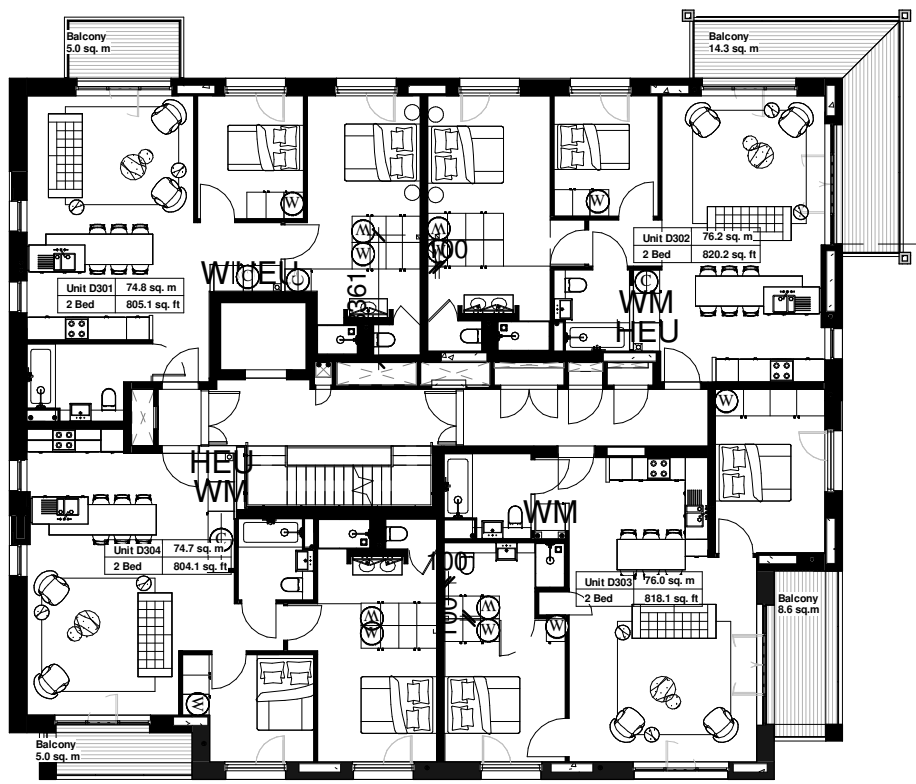
PROPOSED BLOCK D GROUND FLOOR PLAN
BLOCK D GROUND FLOOR PLAN
Refer to Drawing PL-29 Rev B
Approved Under Application Ref 2013/1924/P



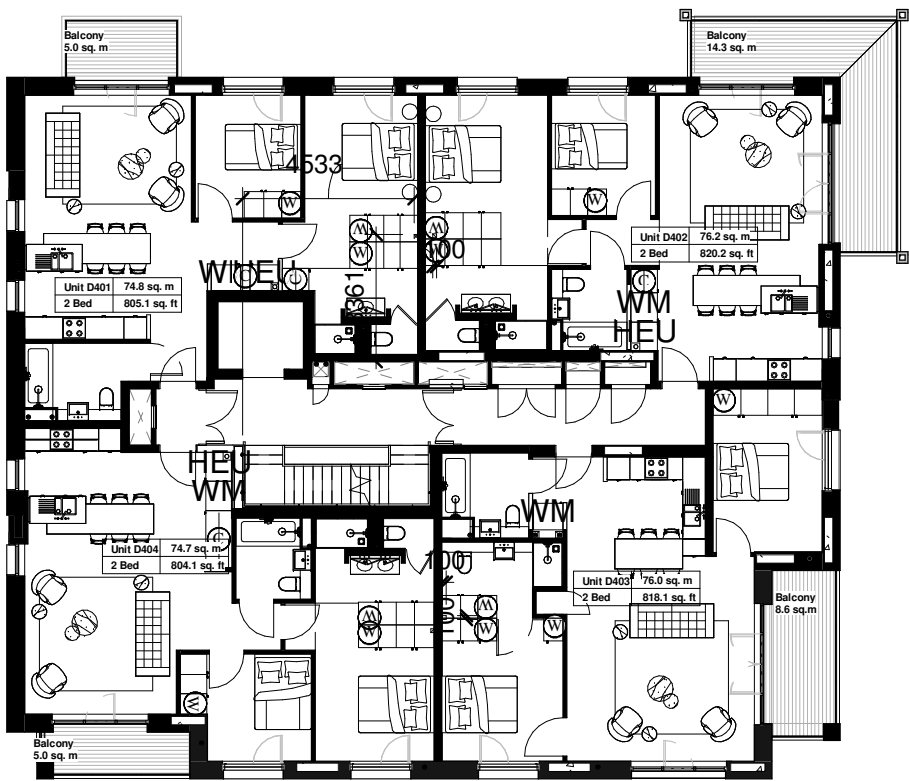
BLOCK D FIRST FLOOR PLAN
Approved Under Application Ref 2013/1924/P



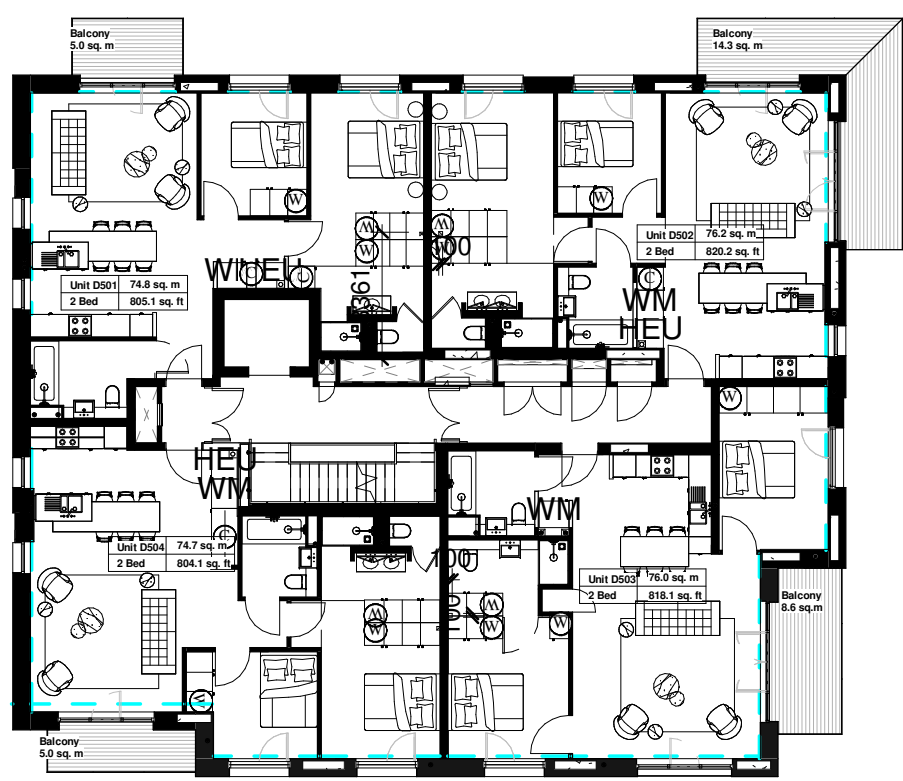
BLOCK D SECOND FLOOR PLAN
Approved Under Application Ref 2013/1924/P



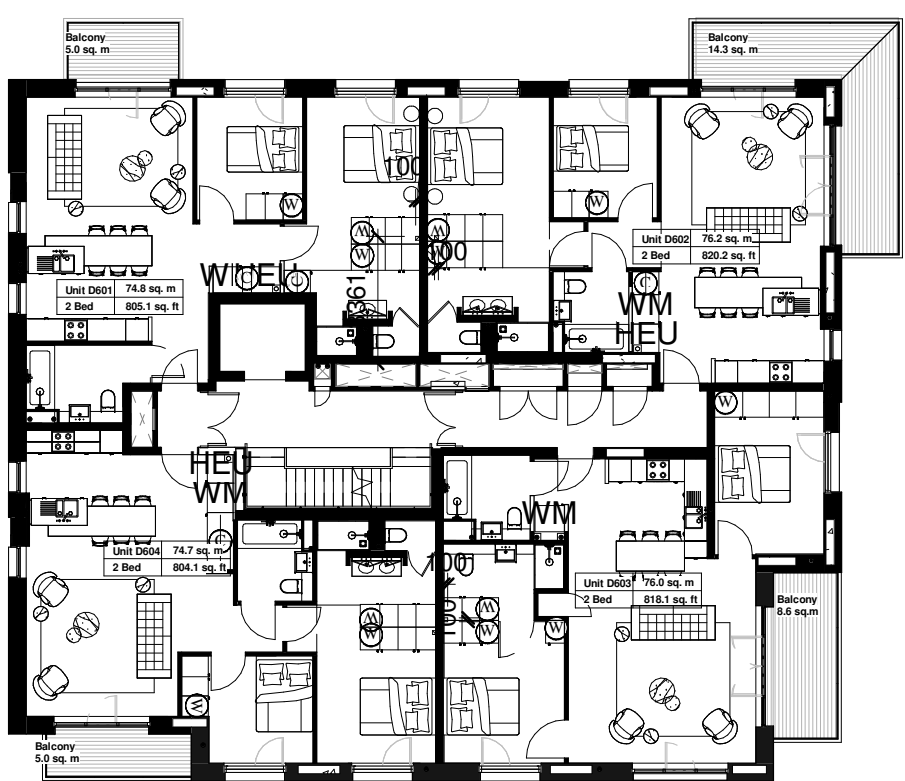
BLOCK D THIRD FLOOR PLAN
Approved Under Application Ref 2013/1924/P



BLOCK D FOURTH FLOOR PLAN
Approved Under Application Ref 2013/1924/P



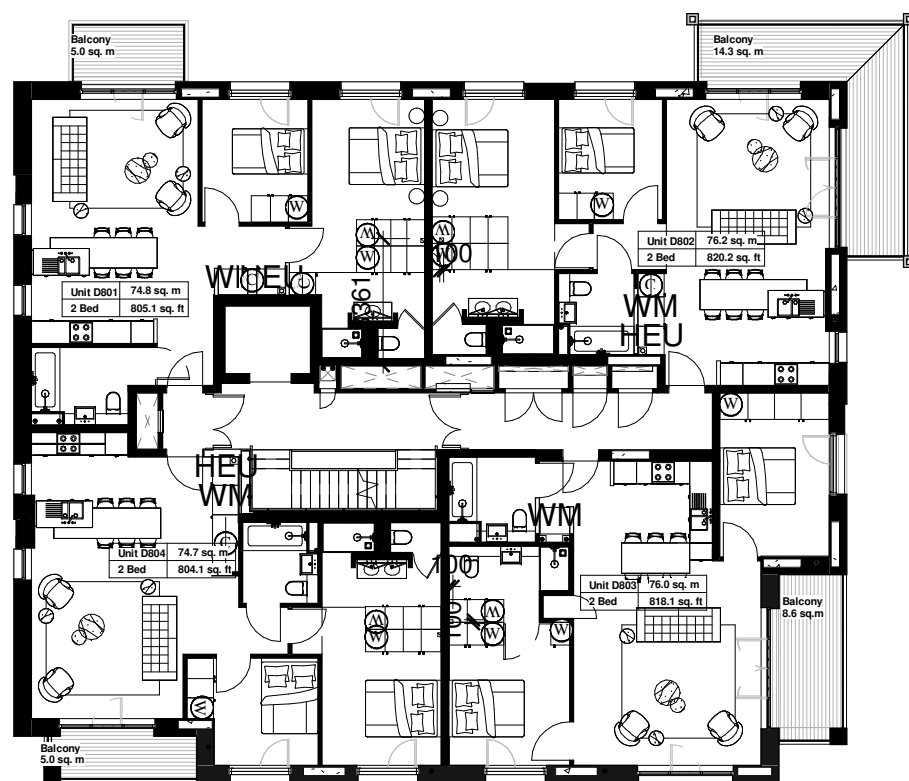
BLOCK D FIFTH FLOOR PLAN
Approved Under Application Ref 2013/1924/P



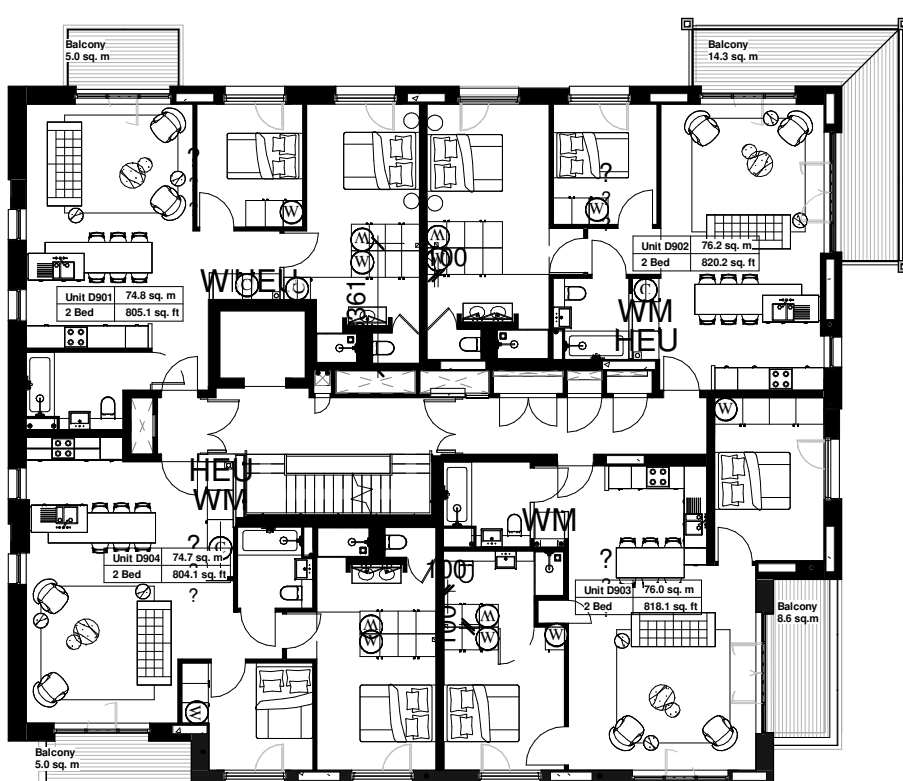
BLOCK D SIXTH FLOOR PLAN
Approved Under Application Ref 2013/1924/P



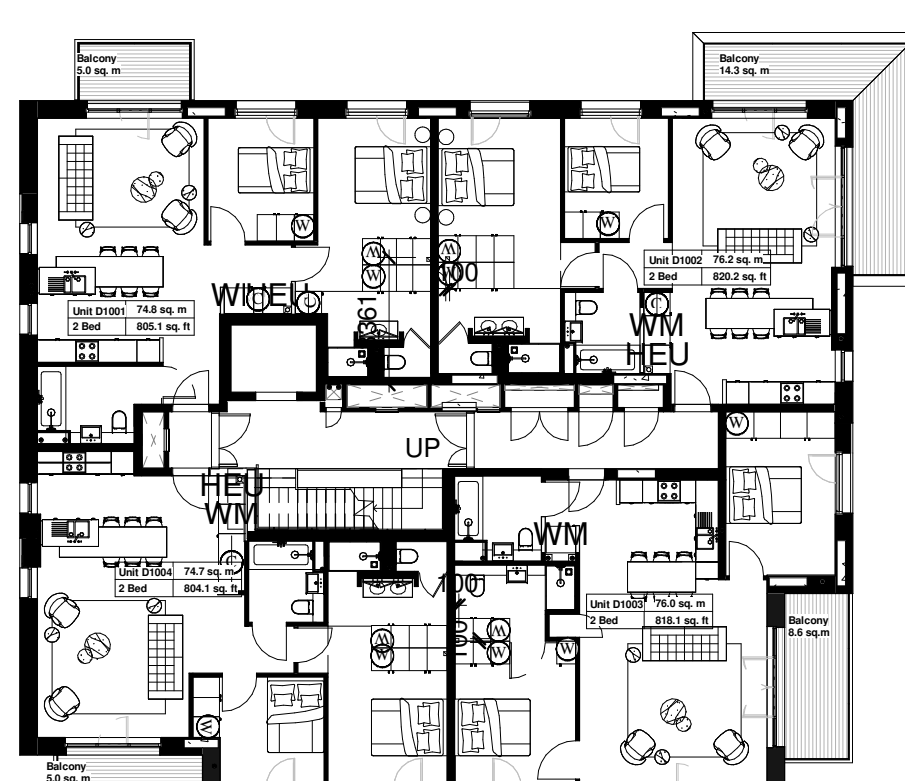
BLOCK D SEVENTH FLOOR PLAN
Approved Under Application Ref 2013/1924/P



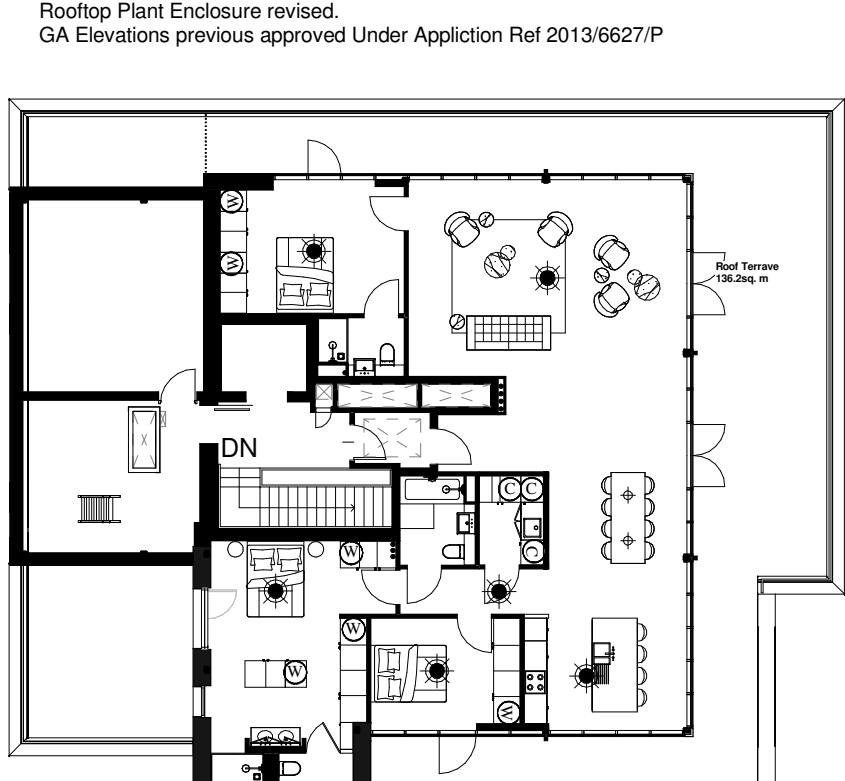
BLOCK D EIGHTH FLOOR PLAN
Approved Under Application Ref 2013/1924/P



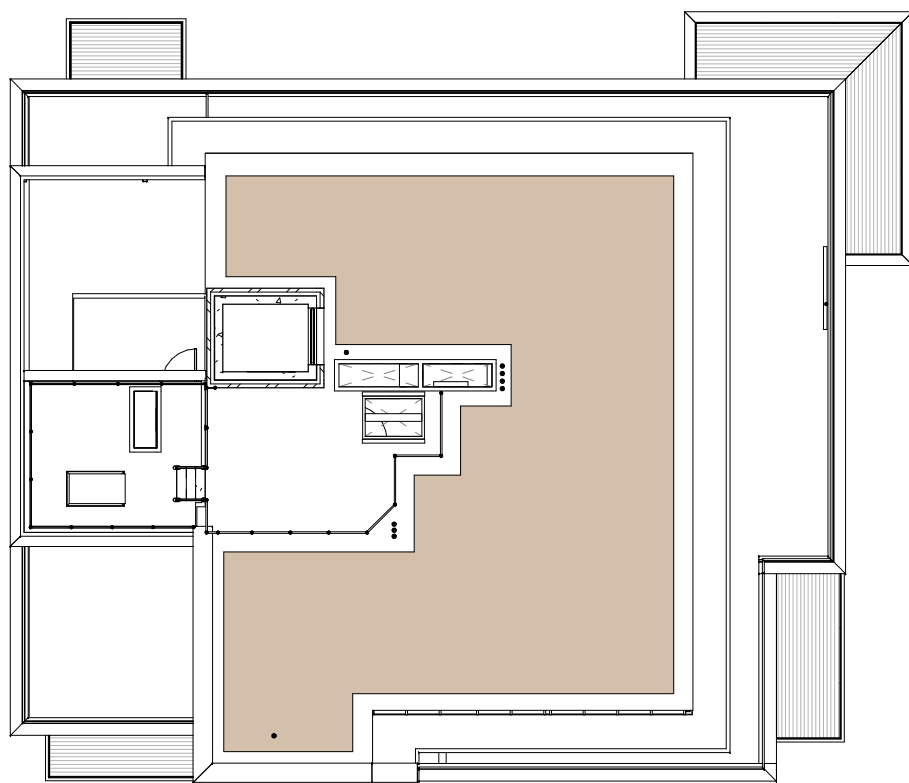
BLOCK D NINTH FLOOR PLAN
Approved Under Application Ref 2013/1924/P



BLOCK D TENTH FLOOR PLAN
Approved Under Application Ref 2013/1924/P



BLOCK D ELEVENTH FLOOR PLAN



BLOCK D ROOF PLAN

© WCEC ARCHITECTS - DISCLAIMER

This drawing is copyright and shall not be reproduced or used for any other purpose without the written permission of the Architects. This drawing must be read in conjunction with all other related drawings and documentation. It is the contractors responsibility to ensure full compliance with the Building Regulations. Do not scale from this drawing, use figured dimensions only. It is the contractors responsibility to check and verify all dimensions on site. Any discrepancies to be reported immediately. IF IN DOUBT ASK. Materials not in conformity with relevant British or European Standards/Codes of practice or materials known to be deleterious to health & safety must not be used or specified on this project. Materials known to contain asbestos contaminated materials (ACM's) in the manufacture or installation process have not been specified and must not be used on this project

C	22.09.15	Ground Floor and First Floor Plans added	DRJ	JA
B	11.07.15	Approval References added. Eleventh Floor and Roof Plan updated to suit GA Elevations previously approved.	AM	DRJ
A	23.05.13	Amended in line with comments received via email on the 13.05.2013 @ 1552	AKS	JA
No	Date	Description	By	Ckd

CLIENT
Network Rail
BALLYMORE

PROJECT
West Hampstead Square

TITLE
Block D Plans

DRAWING STATUS
Construction

DRAWN	SS	CHECKED	IL
SCALE	1 : 200 @ A1		
DATE	05/02/13		

wcecarchitects
31-35 Kirby Street, Farringdon
London, EC1N 8TE

t:020 3388 0019, e: email@wcec.co.uk, www.wcec.co.uk

JOB NO. 12-316	DRAWING NO. PL04	REV C
-------------------	---------------------	----------