

# West Hampstead Square

---

West End Lane  
West Hampstead

Planning Report dated 23/09/2015

## Proposals

This report is to provide a brief summary of the scheme drawings formally approved by Camden Council against the current scheme drawings.

A brief summary of the changes being;

Updated Plans to Blocks A, B, C, D & E at Roof Level showing the increase in area of the Plantwell housing the rooftop Plantwell. Noting that the plans are co-ordinating with the previously approved GA Building Elevations.

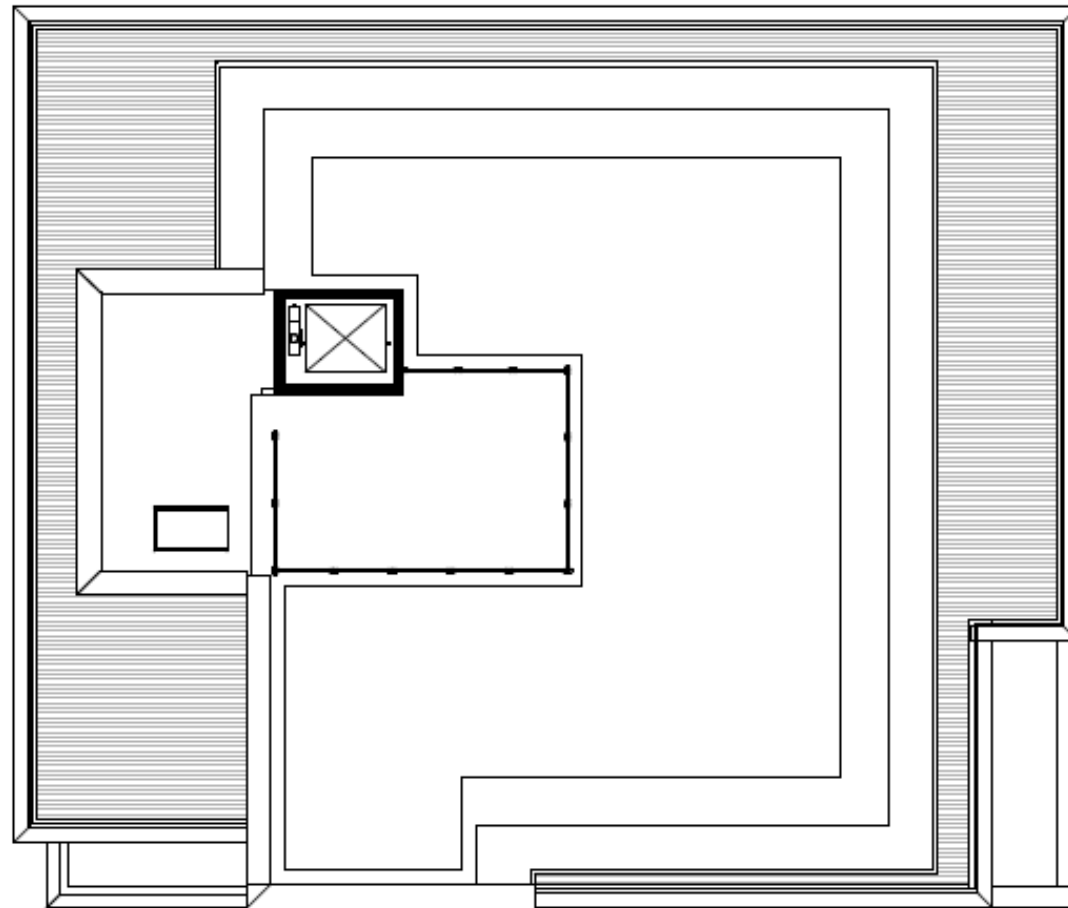
Updated Plans and GA Building Elevations to Block F. Noting that these drawings were submitted under Planning Application ref 2013/6627/P, but were omitted from the formal decision notice.

Updated Plans to Block G showing the minor changes from the previously approved GA Plan drawings to the current scheme incorporating the revisions to the Stairwells to incorporate a ventilated corridor following comments from Building Control.

The revised internal arrangement to Block B Ground Floor Plan to accommodate the residents fitness suite.

Site Masterplan at Street Level (ref PL-24 Rev A) submitted under 2013/6627/P, but omitted from the formal decision notice.

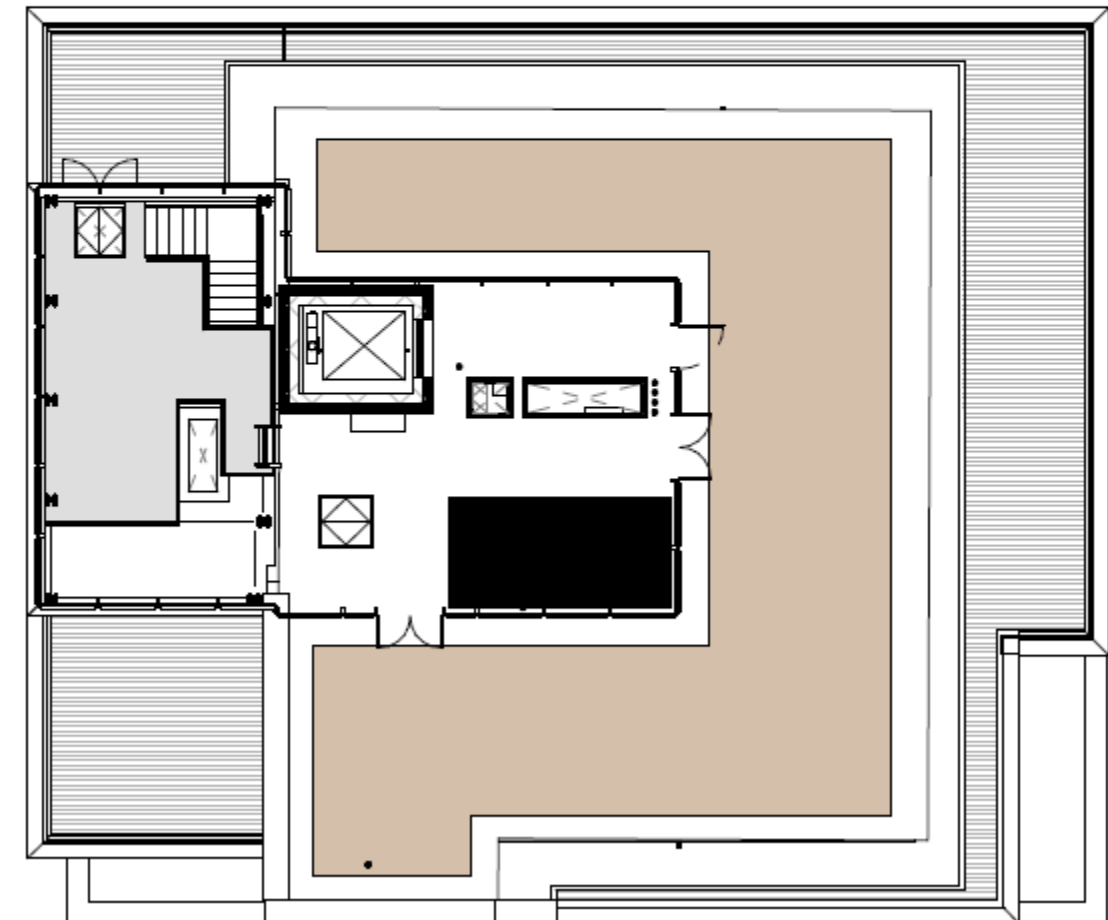
NOTE  
Rooftop Plant Enclosure increased in size.  
Elevations previously approved under Application Ref 2013-6627/P  
Drawing ref 12-316-PL-10 Rev D.



Block A Roof Plan

Approved Under Application ref 2013/1924/P

Drawing Ref 12316-PL-01 Rev A

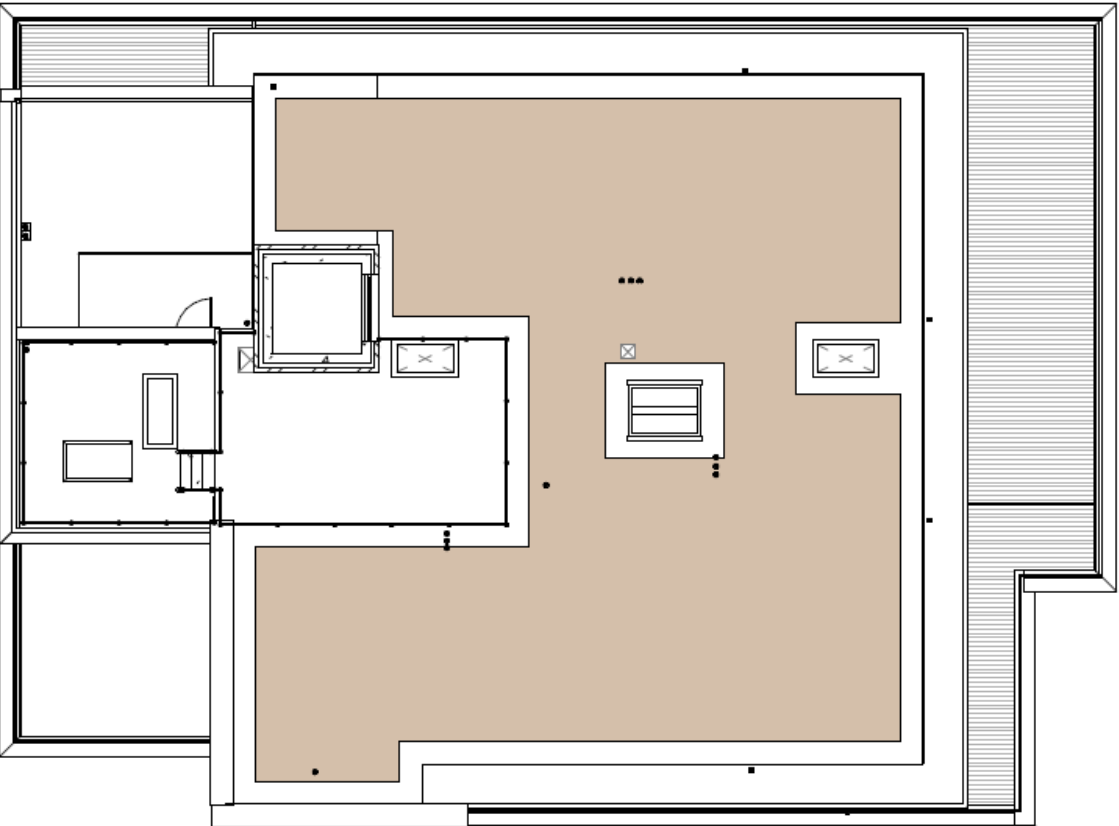
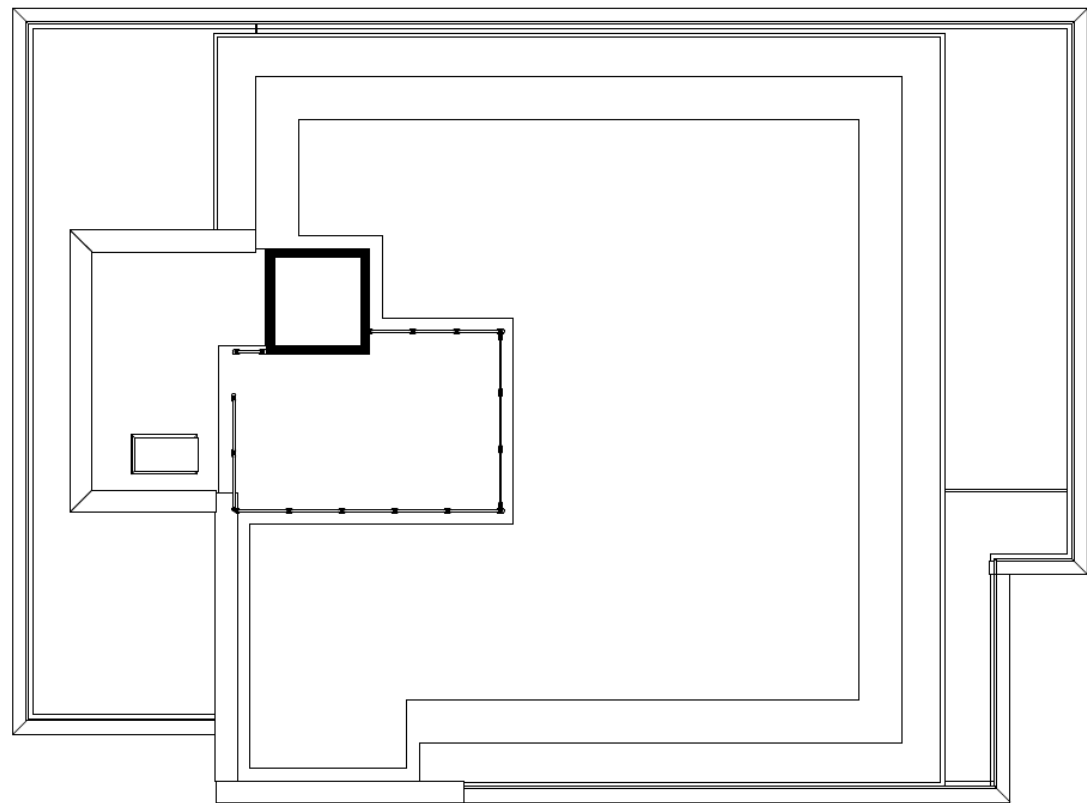


Block A Roof Plan

Proposed

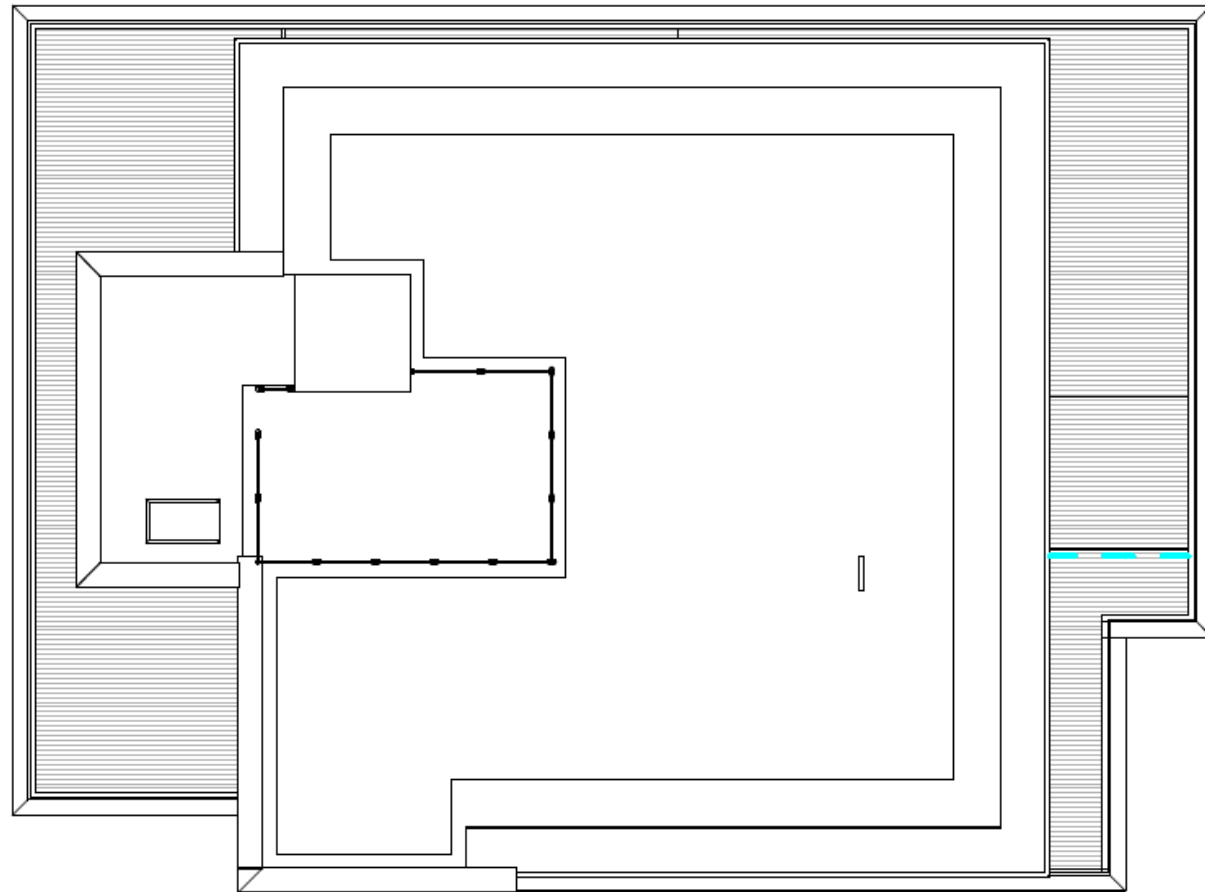
Drawing Ref 12316-PL-01 Rev C

NOTE  
Rooftop Plant Enclosure revised.  
Elevations previously approved under Application Ref 2013/6627/P



Block B Roof Plan  
Approved Under Application ref 2013/1924/P  
Drawing Ref 12316-PL-02 Rev A

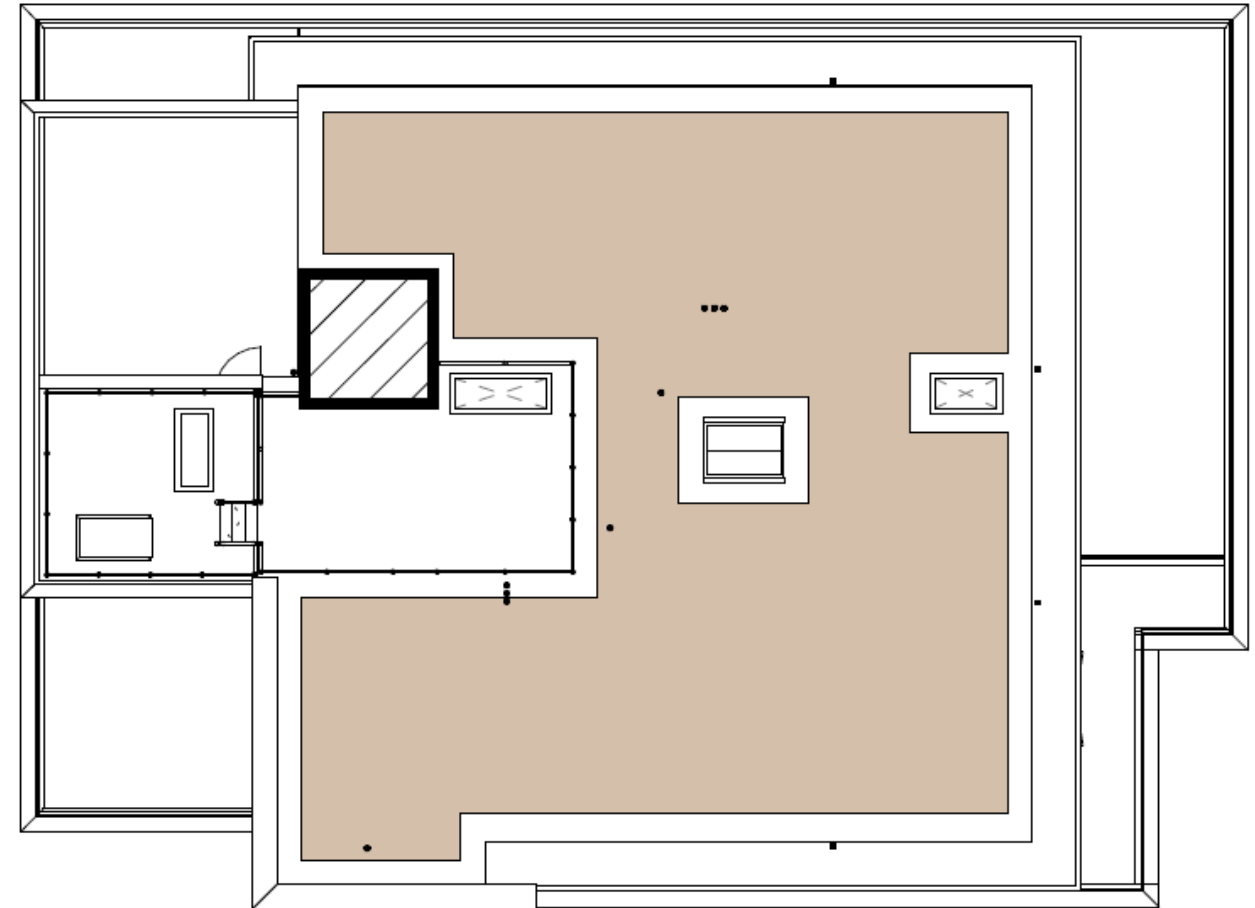
Block B Roof Plan  
Proposed  
Drawing Ref 12316-PL-02 Rev C



Block C Roof Plan

Approved Under Application ref 2013/1924/P

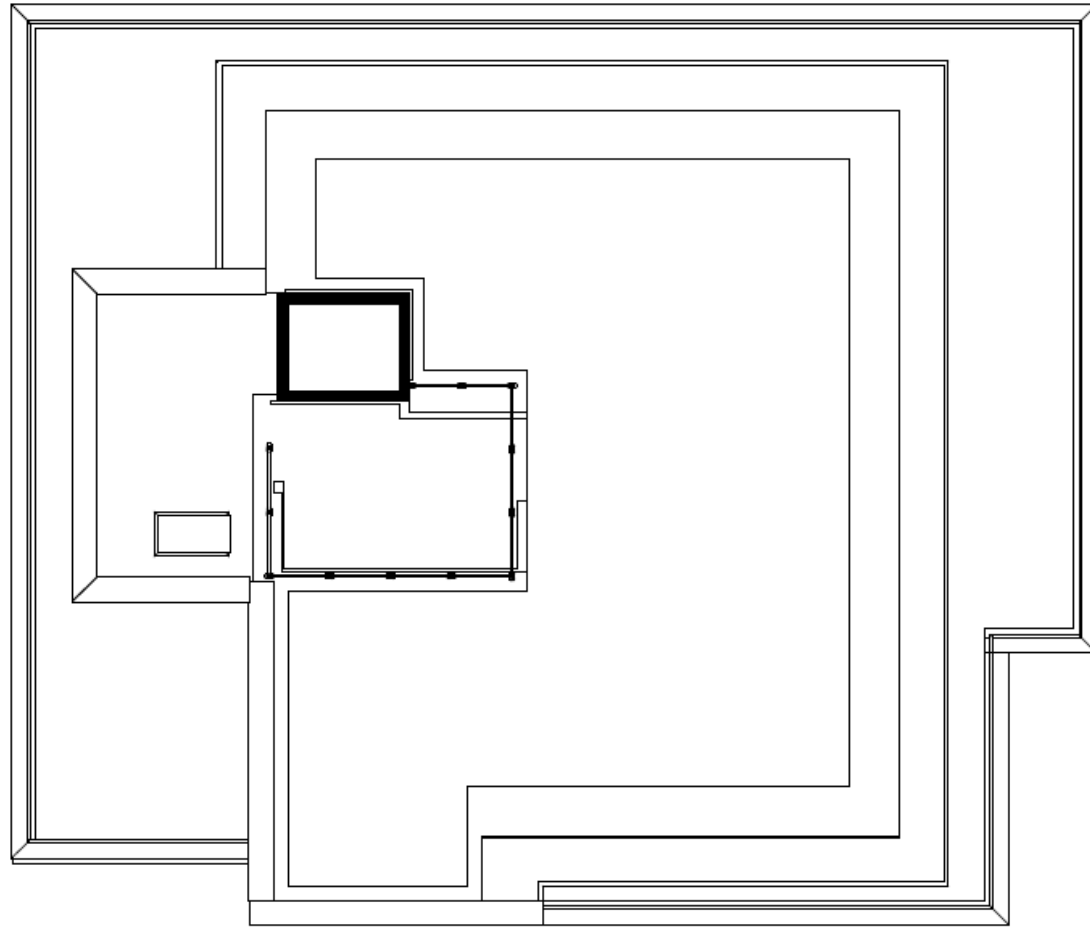
Drawing Ref 12316-PL-03 Rev A



Block C Roof Plan

Proposed

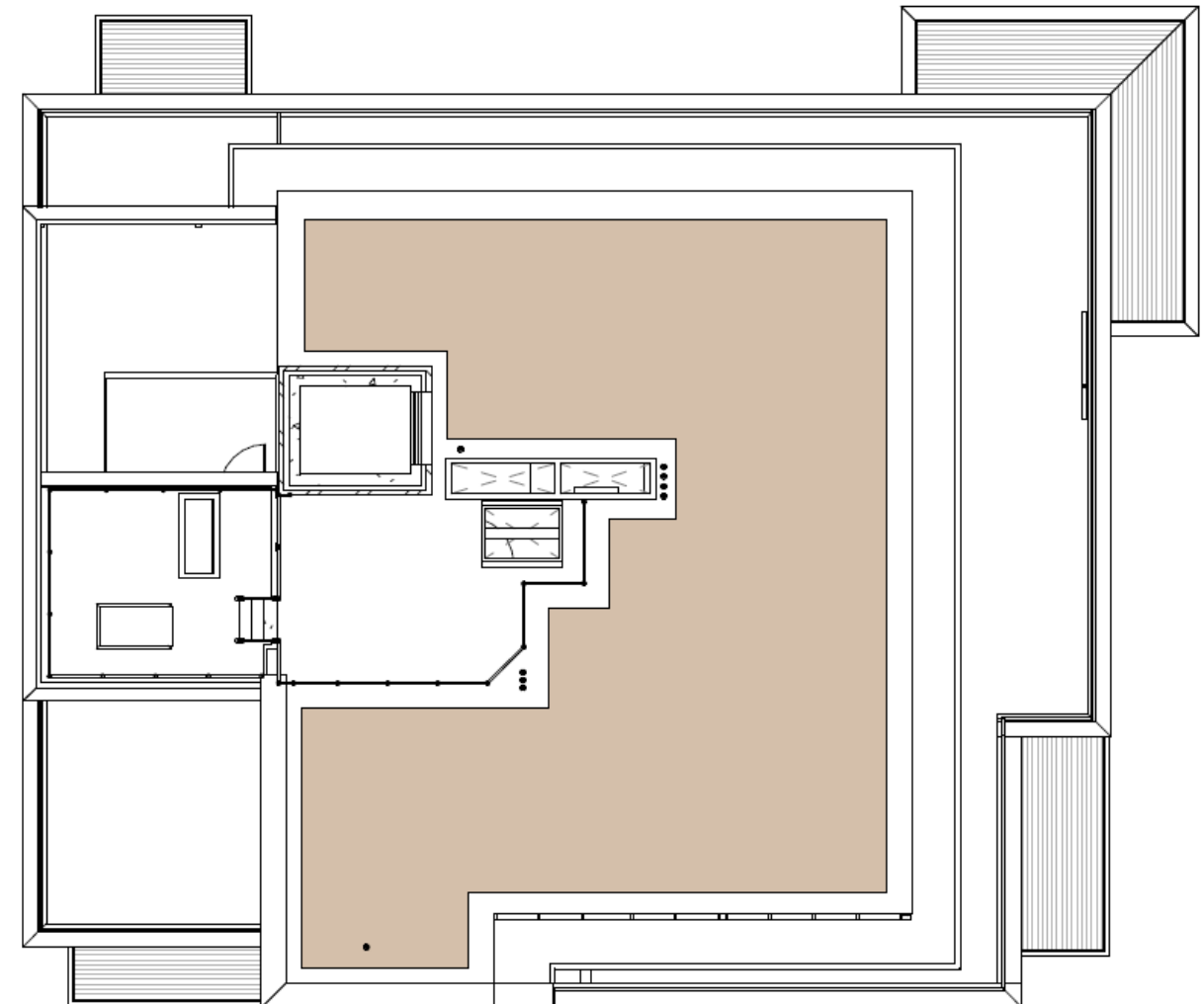
Drawing Ref 12316-PL-03 Rev C



Block D Roof Plan

Approved Under Application ref 2013/1924/P

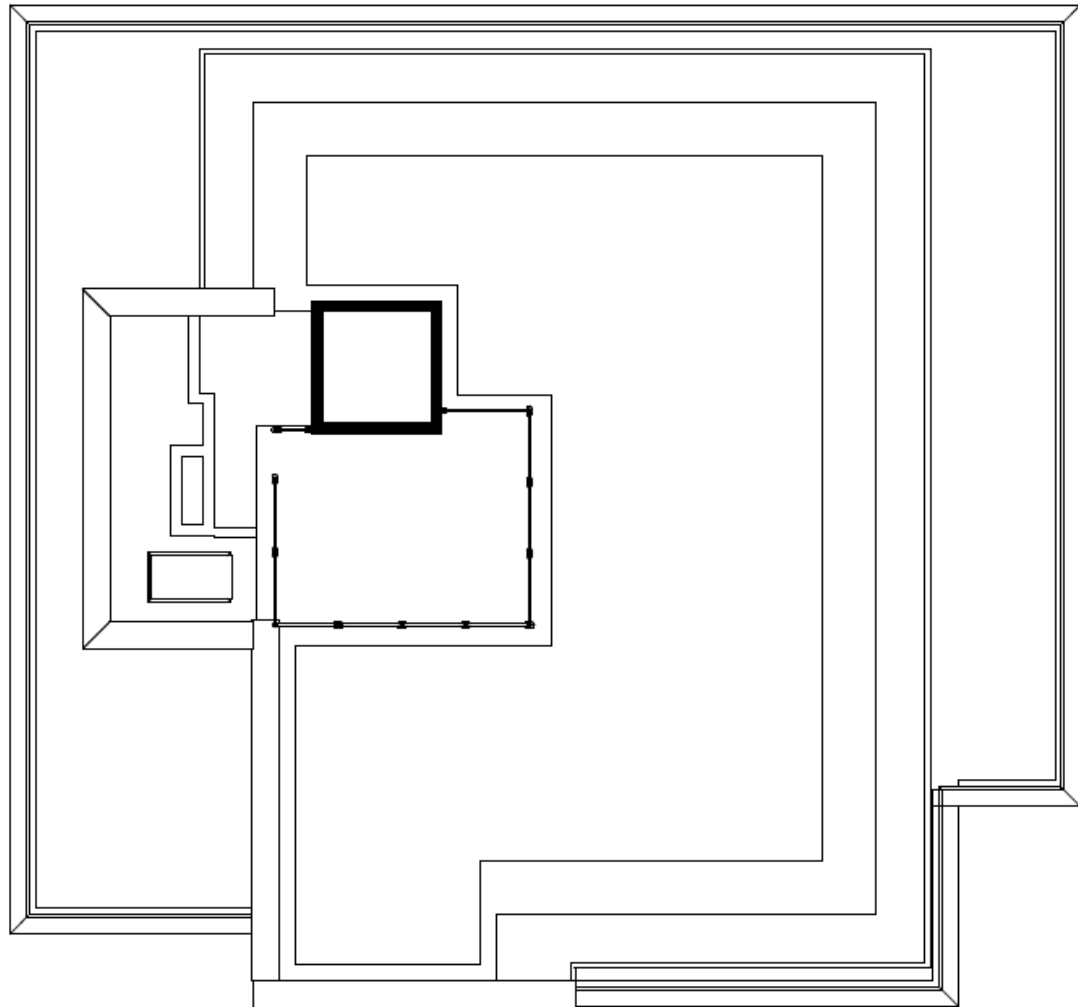
Drawing Ref 12316-PL-04 Rev A



Block D Roof Plan

Proposed

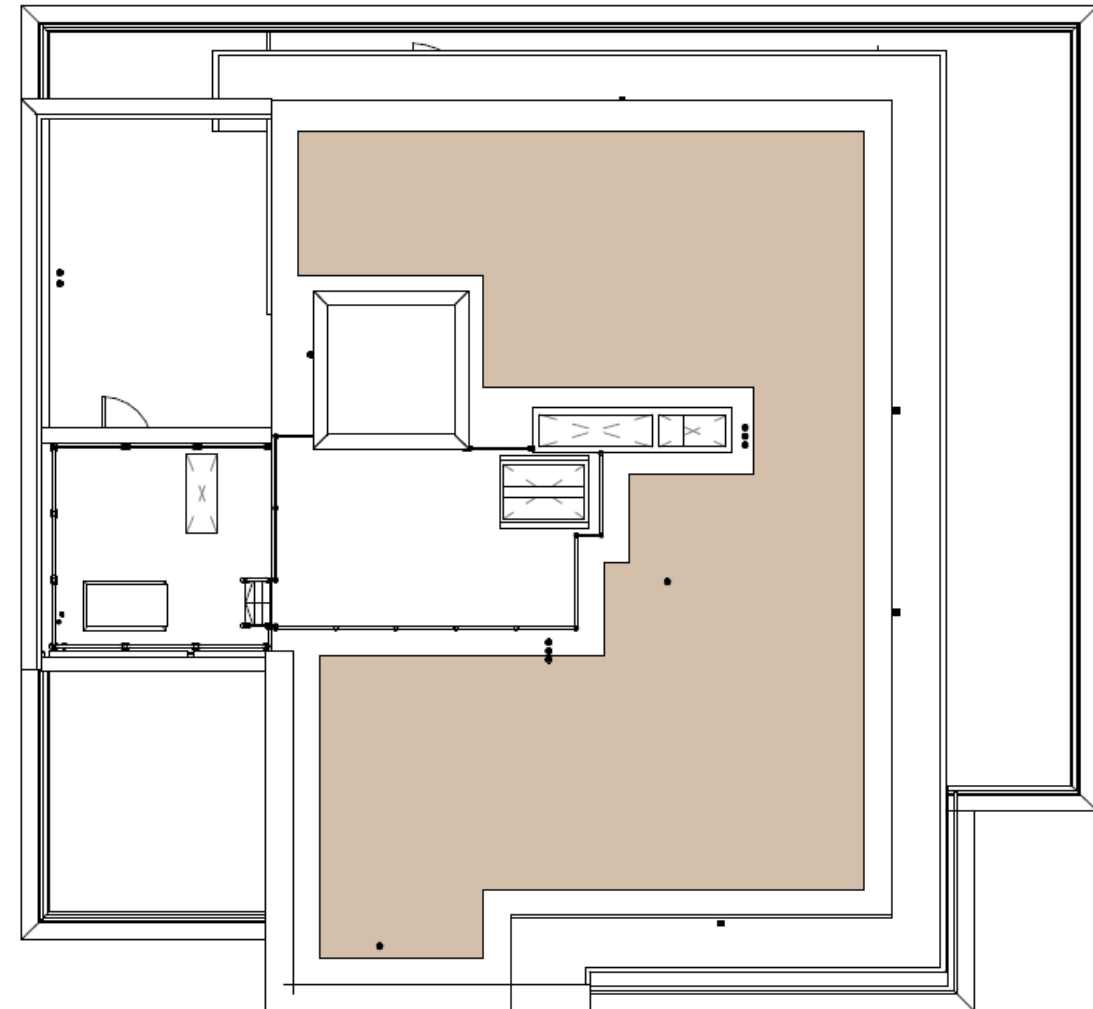
Drawing Ref 12316-PL-04 Rev C



Block E Roof Plan

Approved Under Application ref 2013/1924/P

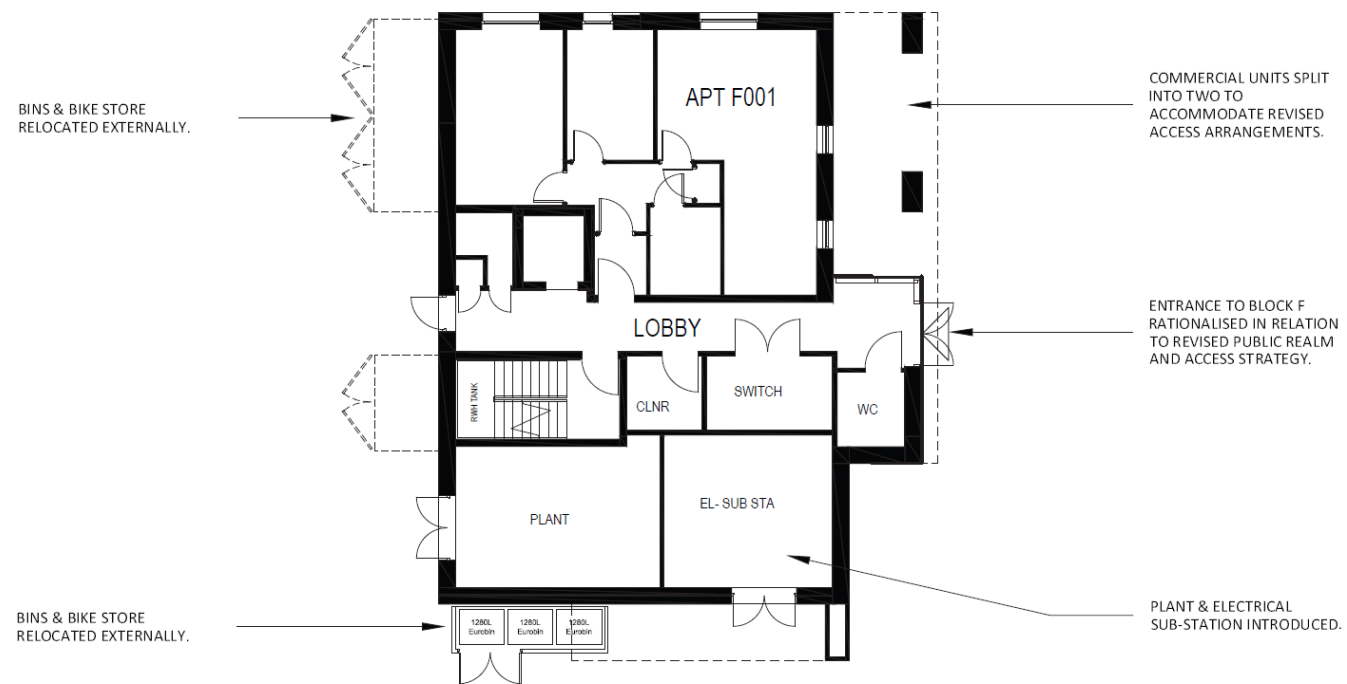
Drawing Ref 12316-PL-05 Rev A



Block E Roof Plan

Proposed

Drawing Ref 12316-PL-05 Rev C

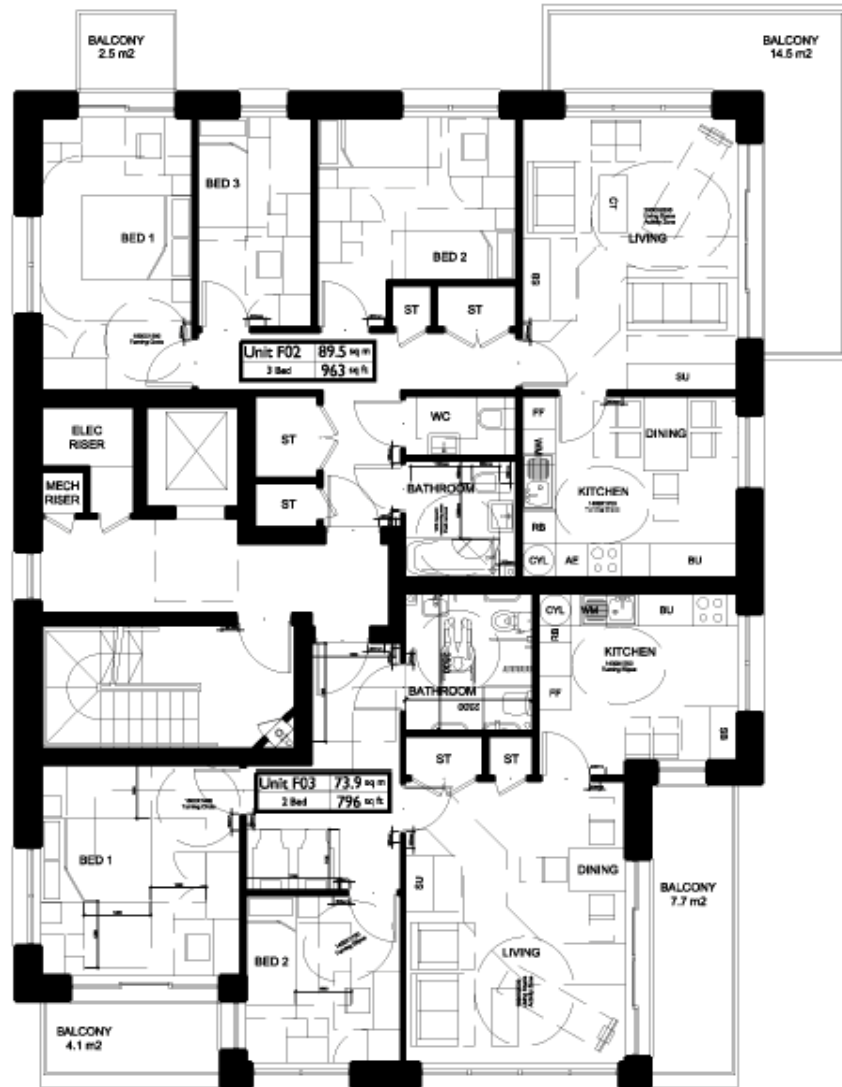


Block F Ground Floor Plan

Approved Under Application ref 2013/6627/P

Drawing Ref 12316-PL-31

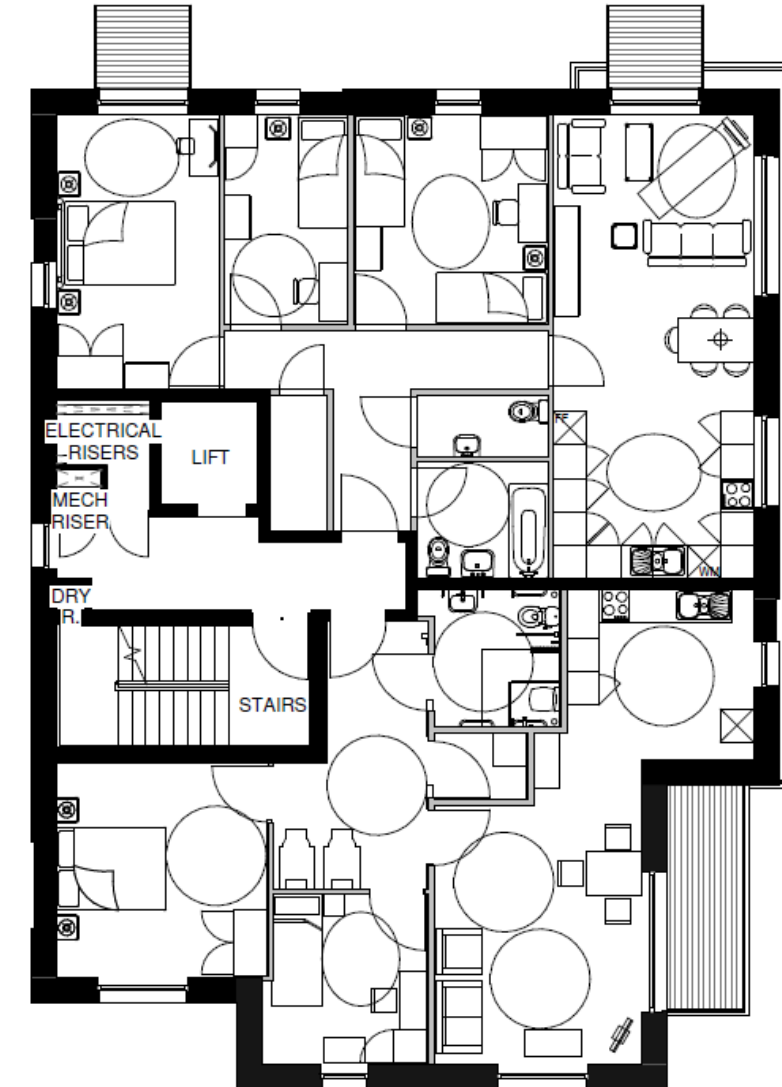




Block F First Floor Plan

Approved Under Application ref 2013/1924/P

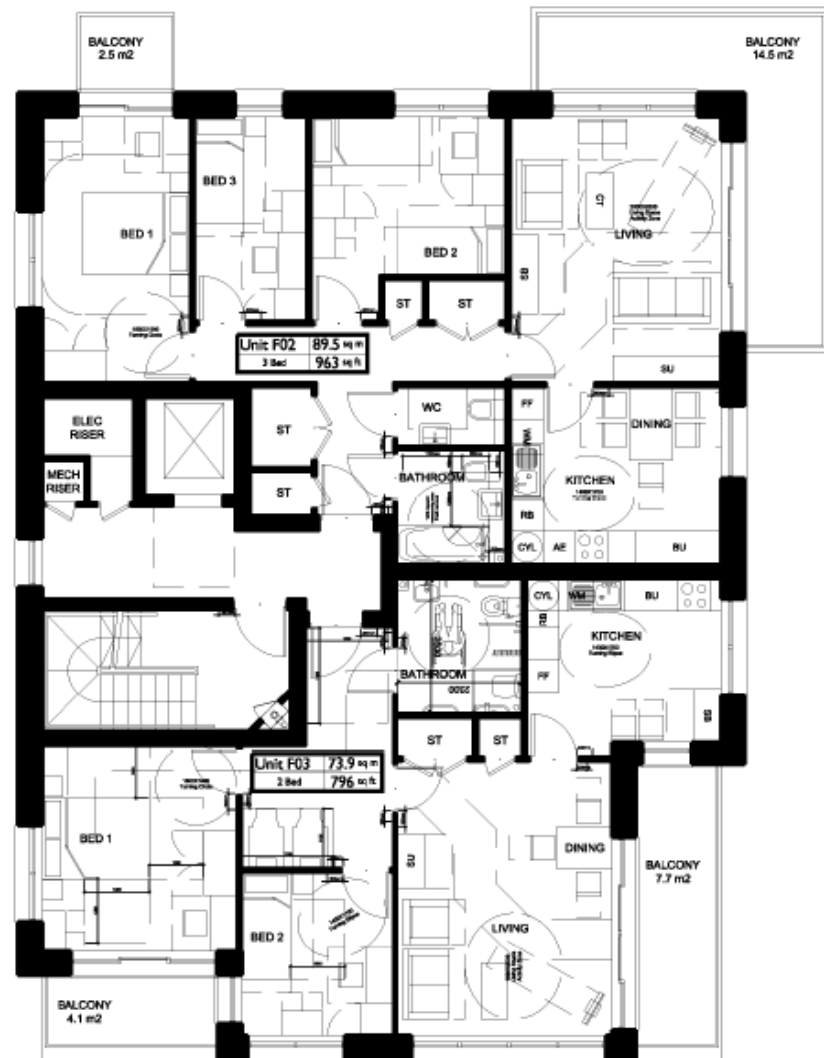
Drawing Ref 12316-PL-06



Block F First Floor Plan

Submitted Under Application ref 2013/6627/P

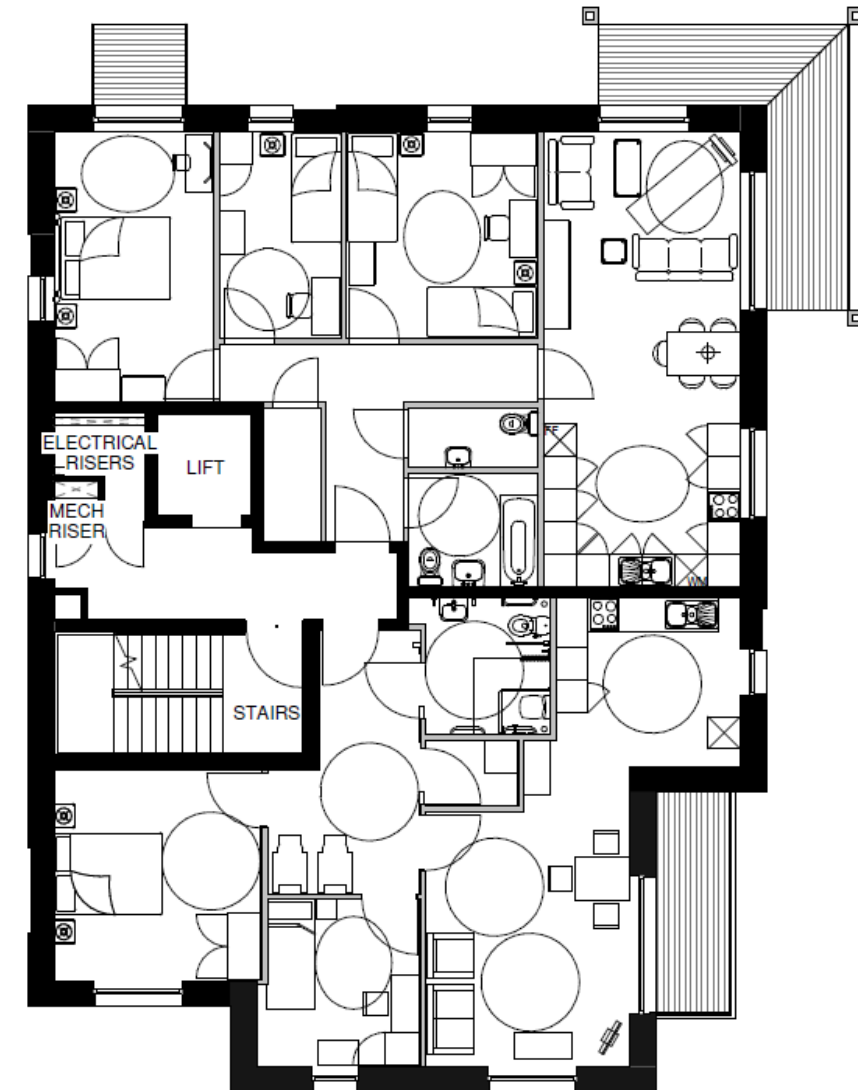
Drawing Ref 12316-PL-60



Block F Second Floor Plan

Approved Under Application ref 2013/1924/P

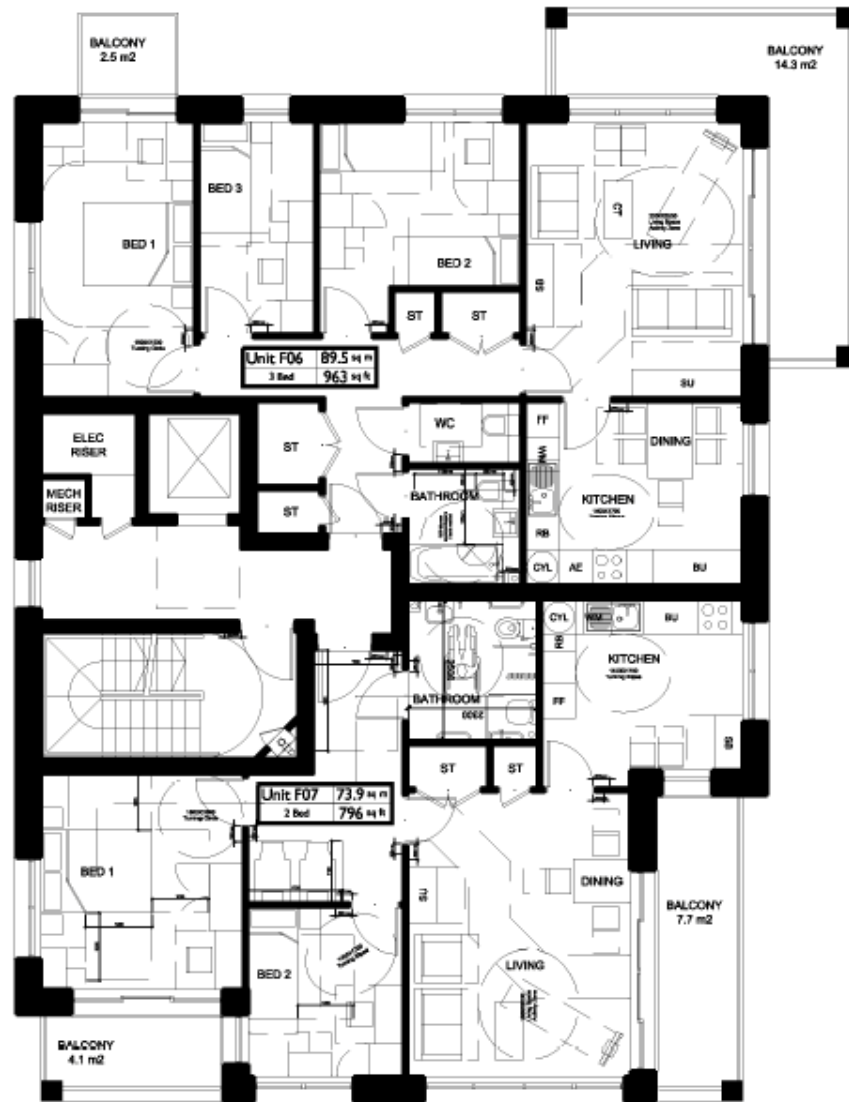
Drawing Ref 12316-PL-06



Block F Second Floor Plan

Submitted Under Application Ref 2013/6627/P

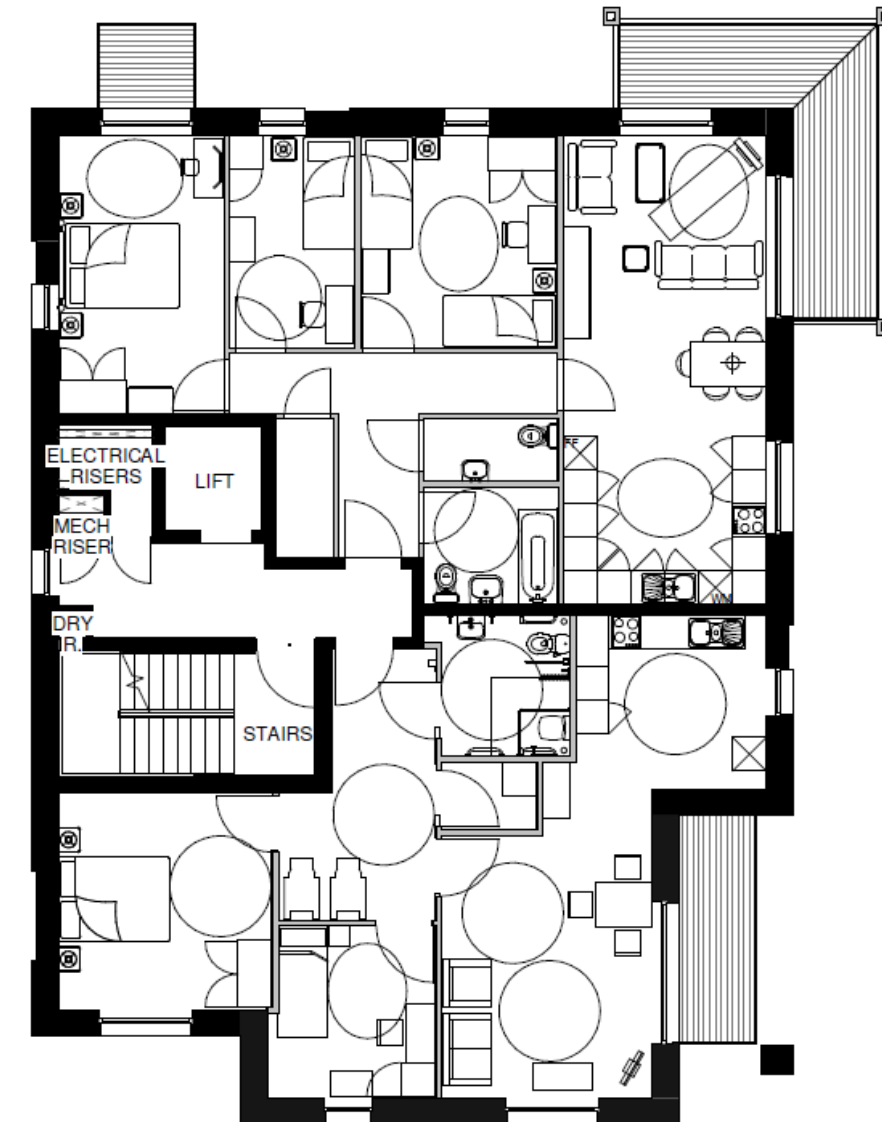
Drawing Ref 12316-PL-61



Block F Third Floor Plan

Approved Under Application ref 2013/1924/P

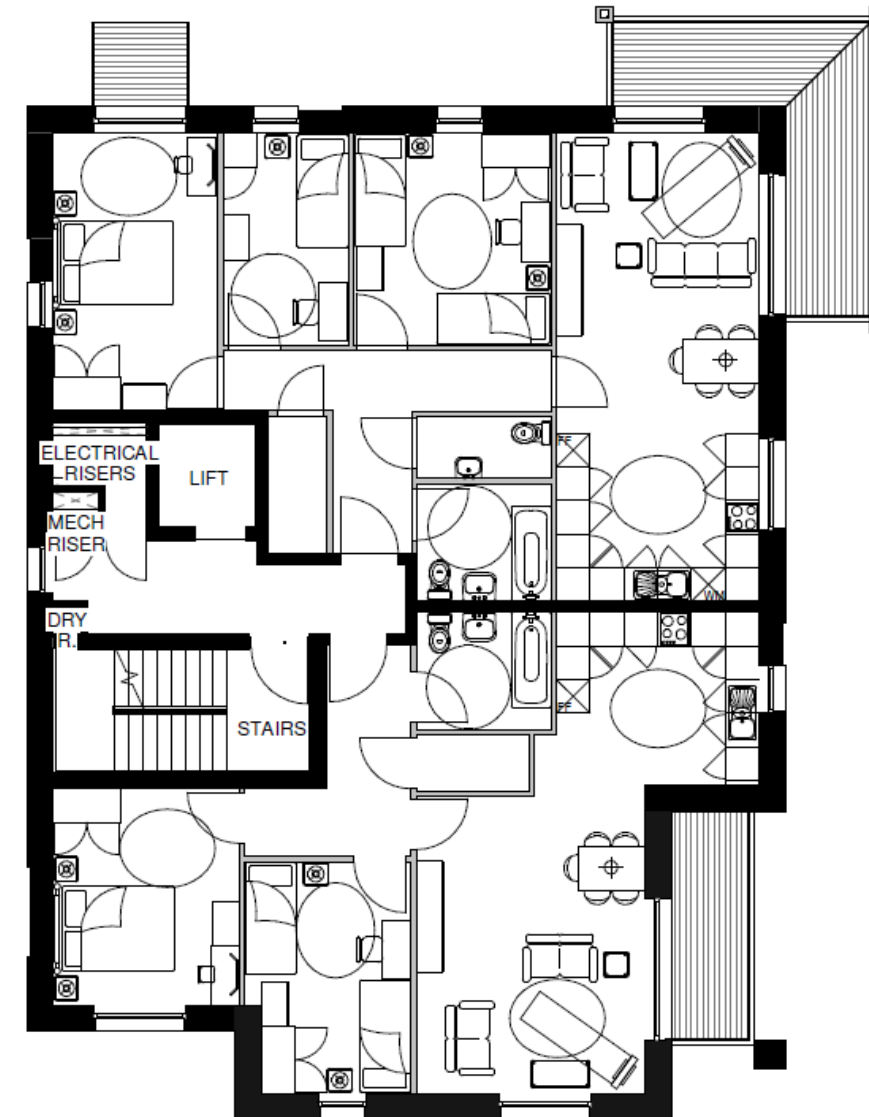
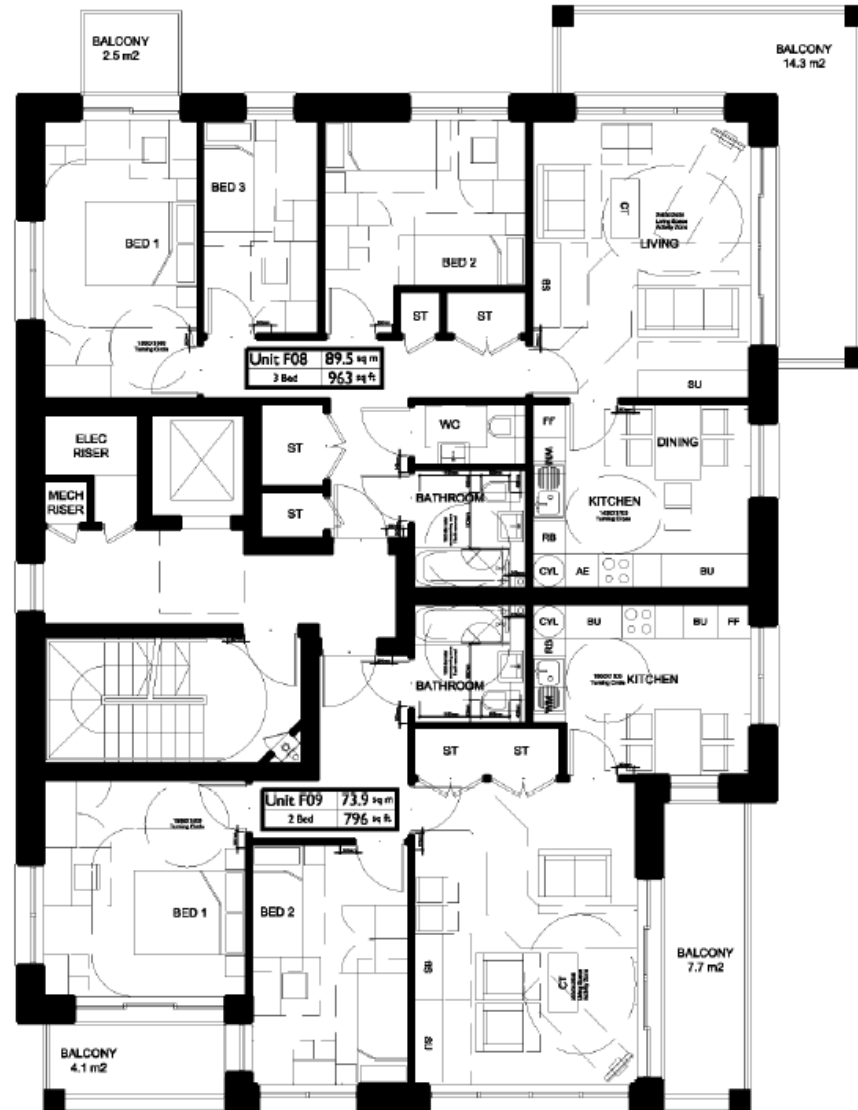
Drawing Ref 12316-PL-06



Block F Third Floor Plan

Submitted Under Application ref 2013/6627/P

Drawing Ref 12316-PL-62



Block F Fourth Floor Plan

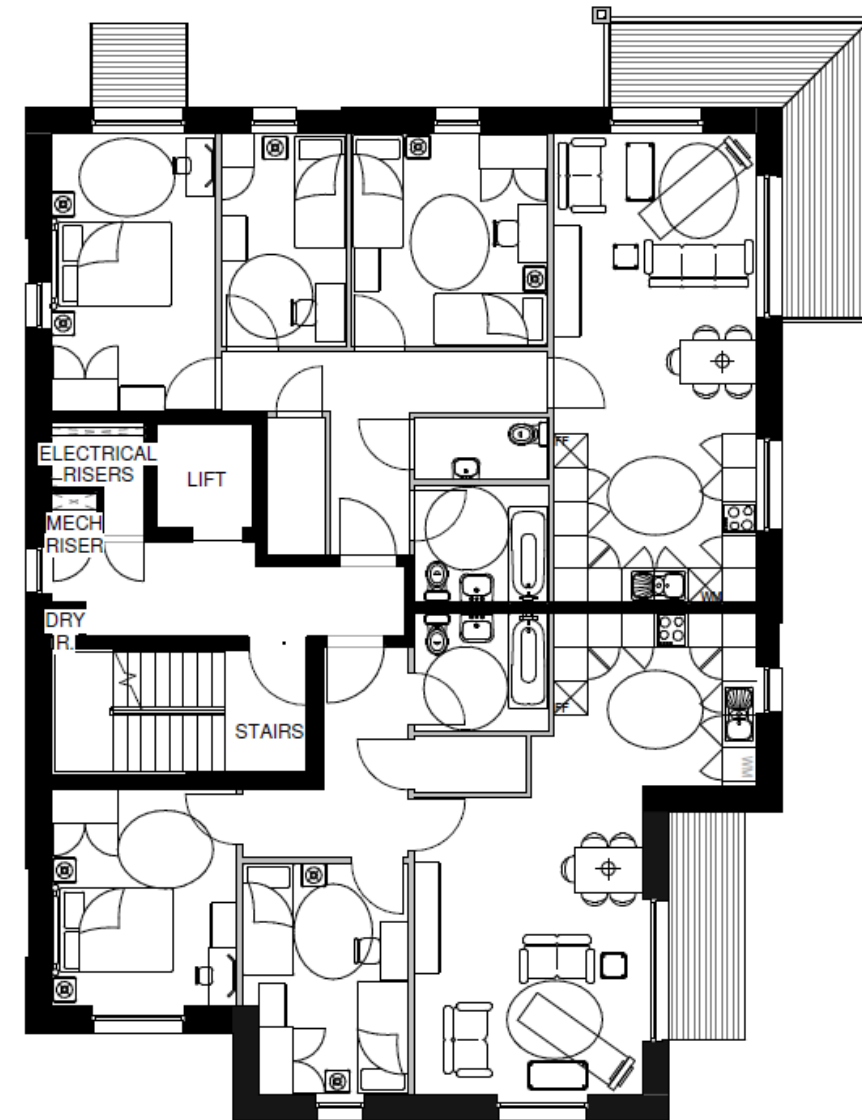
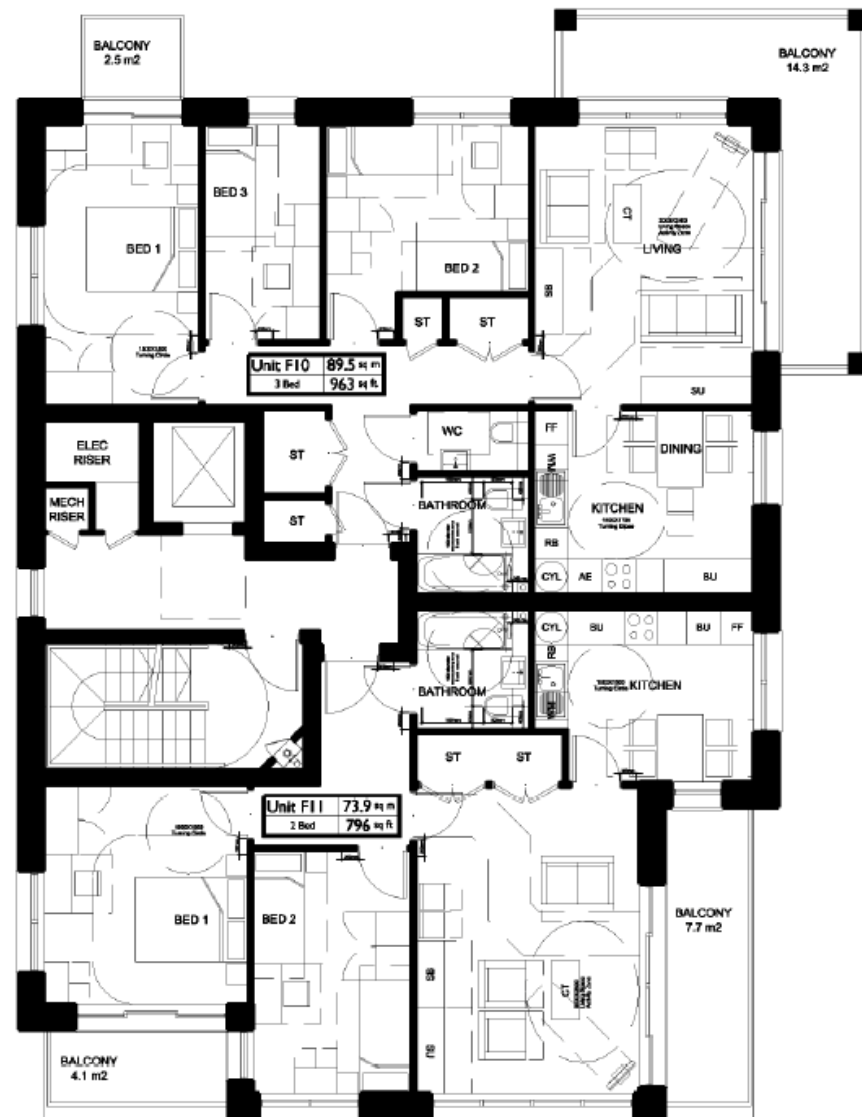
Approved Under Application ref 2013/1924/P

Drawing Ref 12316-PL-06

Block F Fourth Floor Plan

Submitted Under Application ref 2013/6627/P

Drawing Ref 12316-PL-63



Block F Fifth Floor Plan

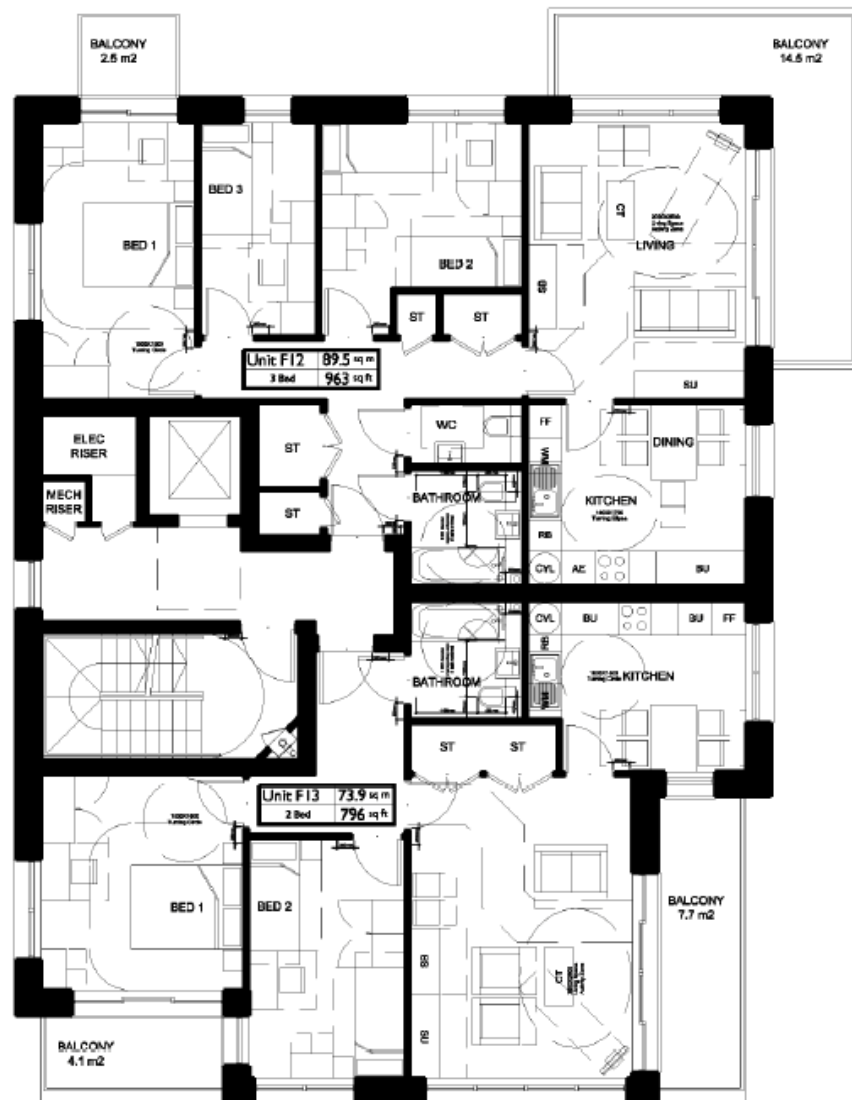
Approved Under Application ref 2013/1924/P

Drawing Ref 12316-PL-06

Block F Fifth Floor Plan

Submitted Under Application ref 2013/6627/P

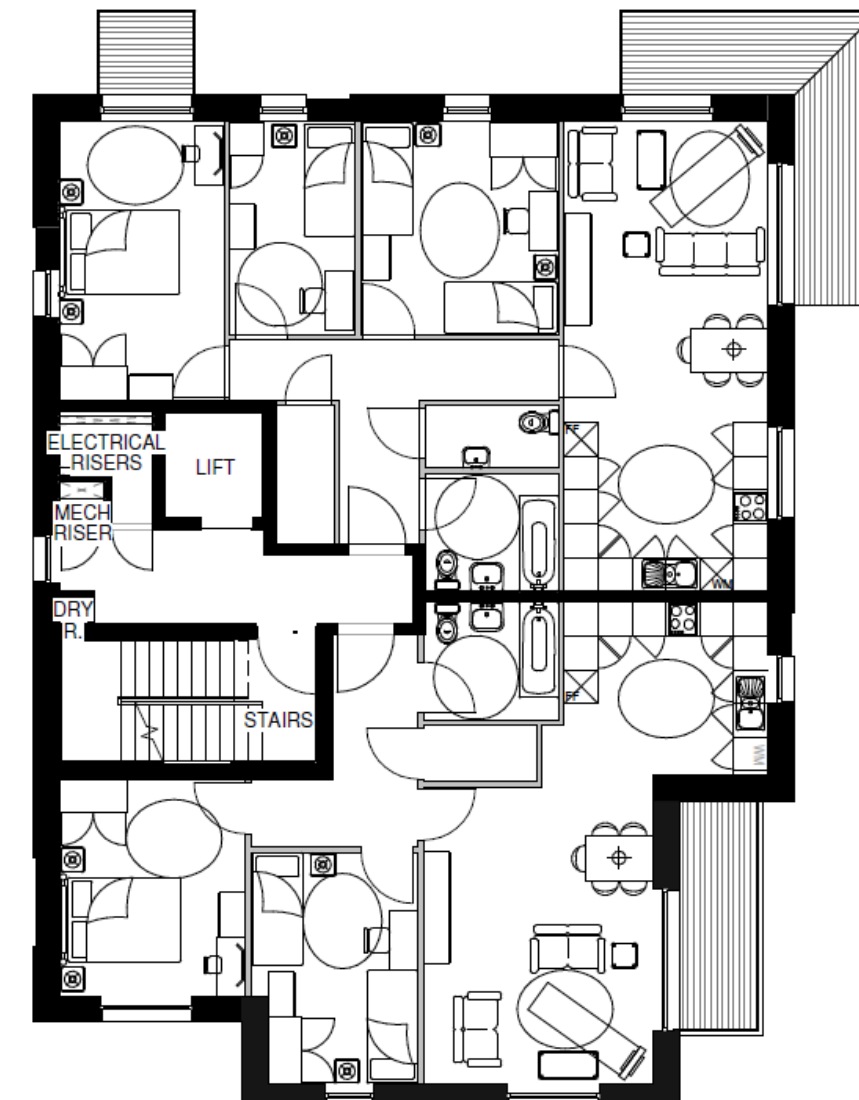
Drawing Ref 12316-PL-64



Block F Sixth Floor Plan

Approved Under Application ref 2013/1924/P

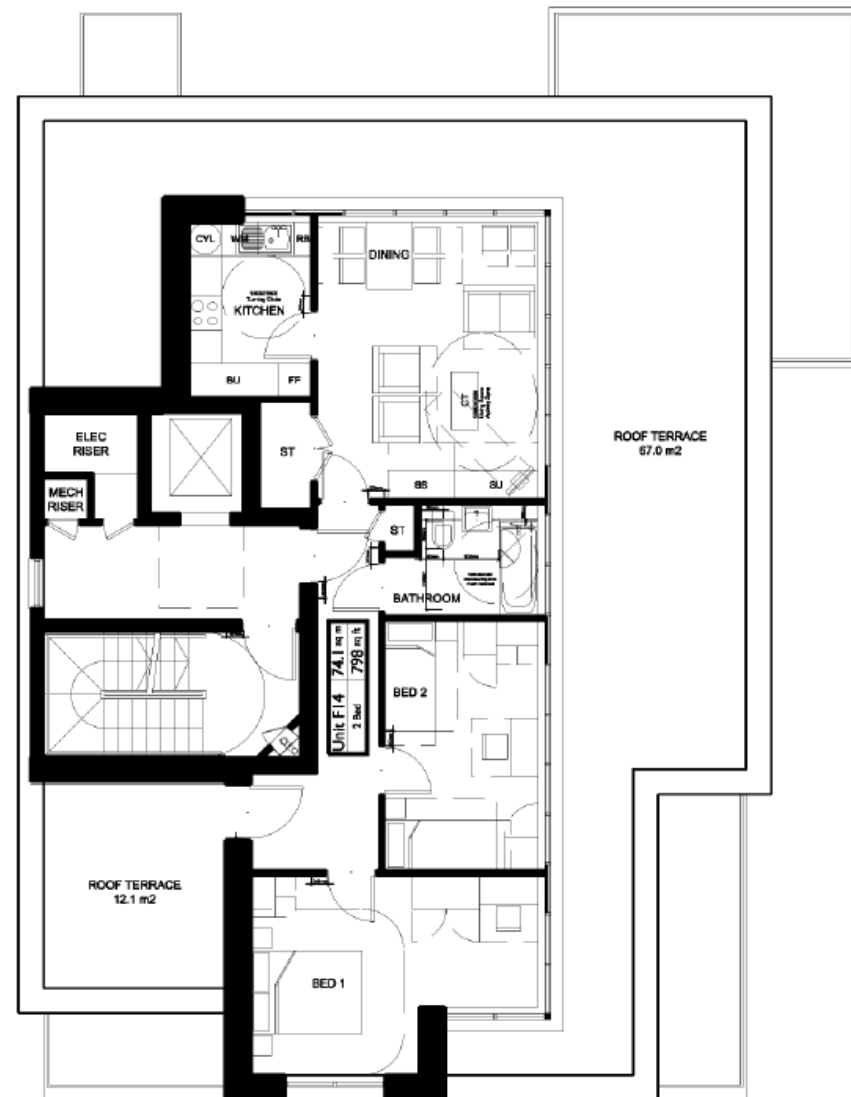
Drawing Ref 12316-PL-06



Block F Sixth Floor Plan

Submitted Under Application ref 2013/6627/P

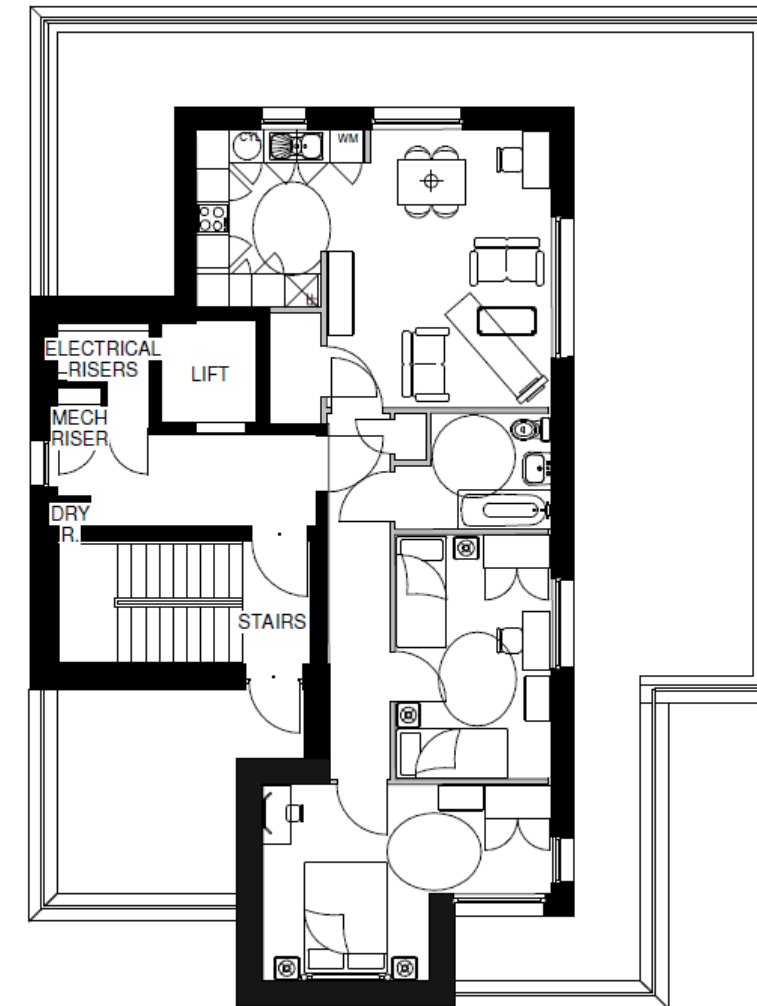
Drawing Ref 12316-PL-65



Block F Seventh Floor Plan

Approved Under Application ref 2013/1924/P

Drawing Ref 12316-PL-06



Block F Seventh Floor Plan

Submitted Under Application ref 2013/6627/P

Drawing Ref 12316-PL-66





Block F GA Elevations - South

Approved Under Application ref 2013/1924/P

Drawing Ref 12316-PL-15

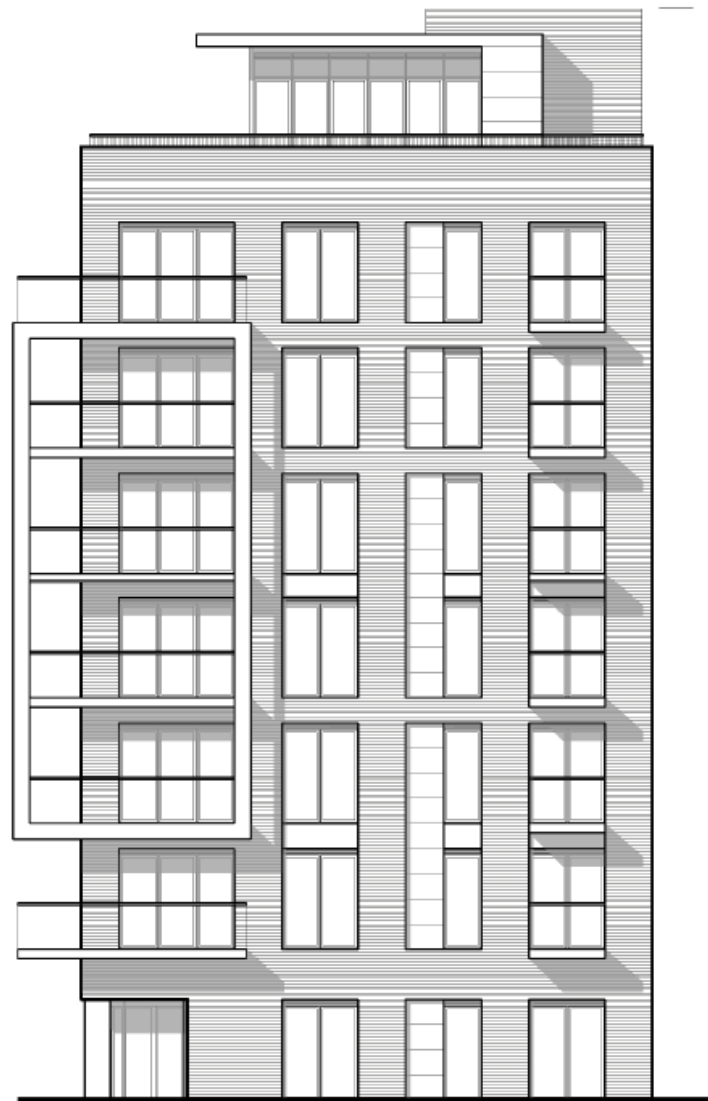


Block F Elevations - South

Submitted Under Application ref 2013/6627/P

Drawing Ref 12316-PL-15 Rev B





Block F GA Elevations - East

Approved Under Application ref 2013/1924/P

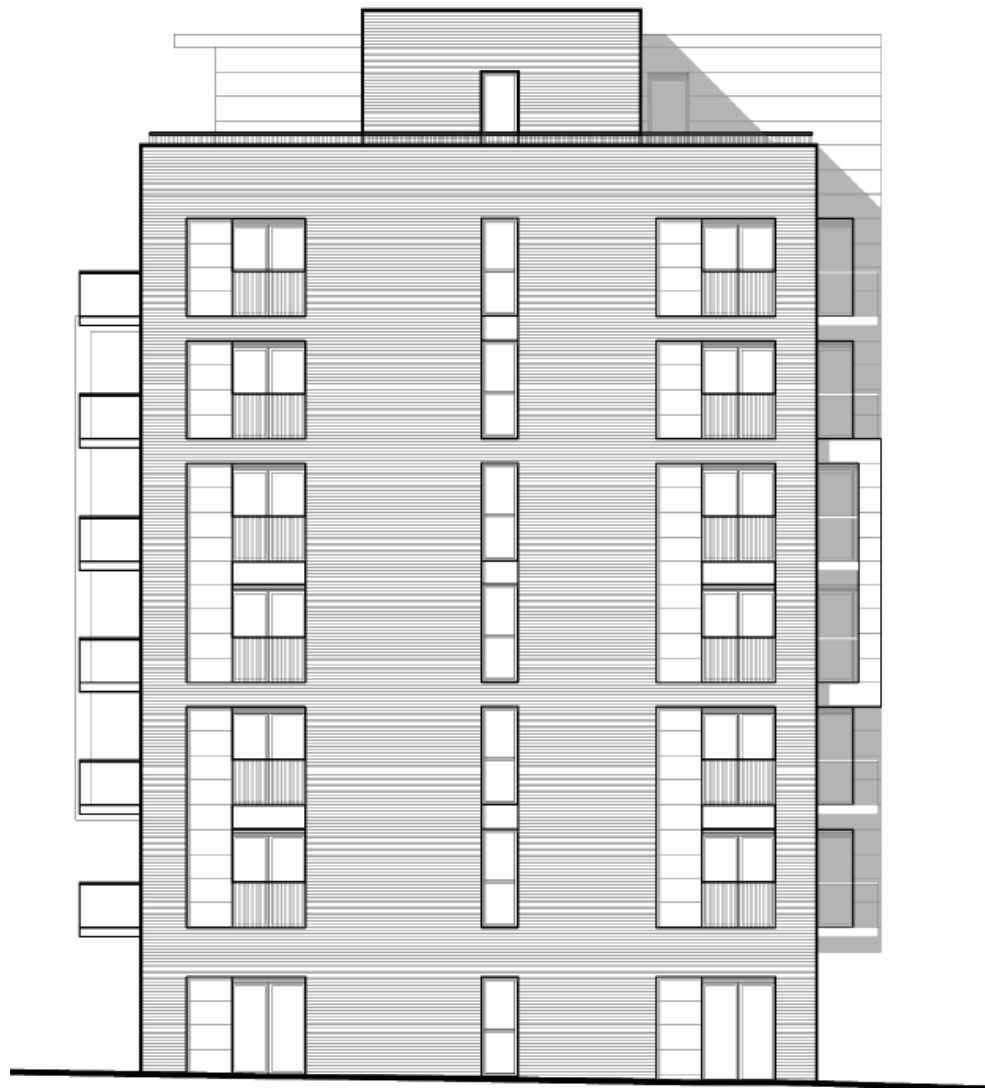
Drawing Ref 12316-PL-15



Block F Elevations - East

Submitted Under Application ref 2013/6627/P

Drawing Ref 12316-PL-15 Rev B



Block F GA Elevations - North

Approved Under Application ref 2013/1924/P

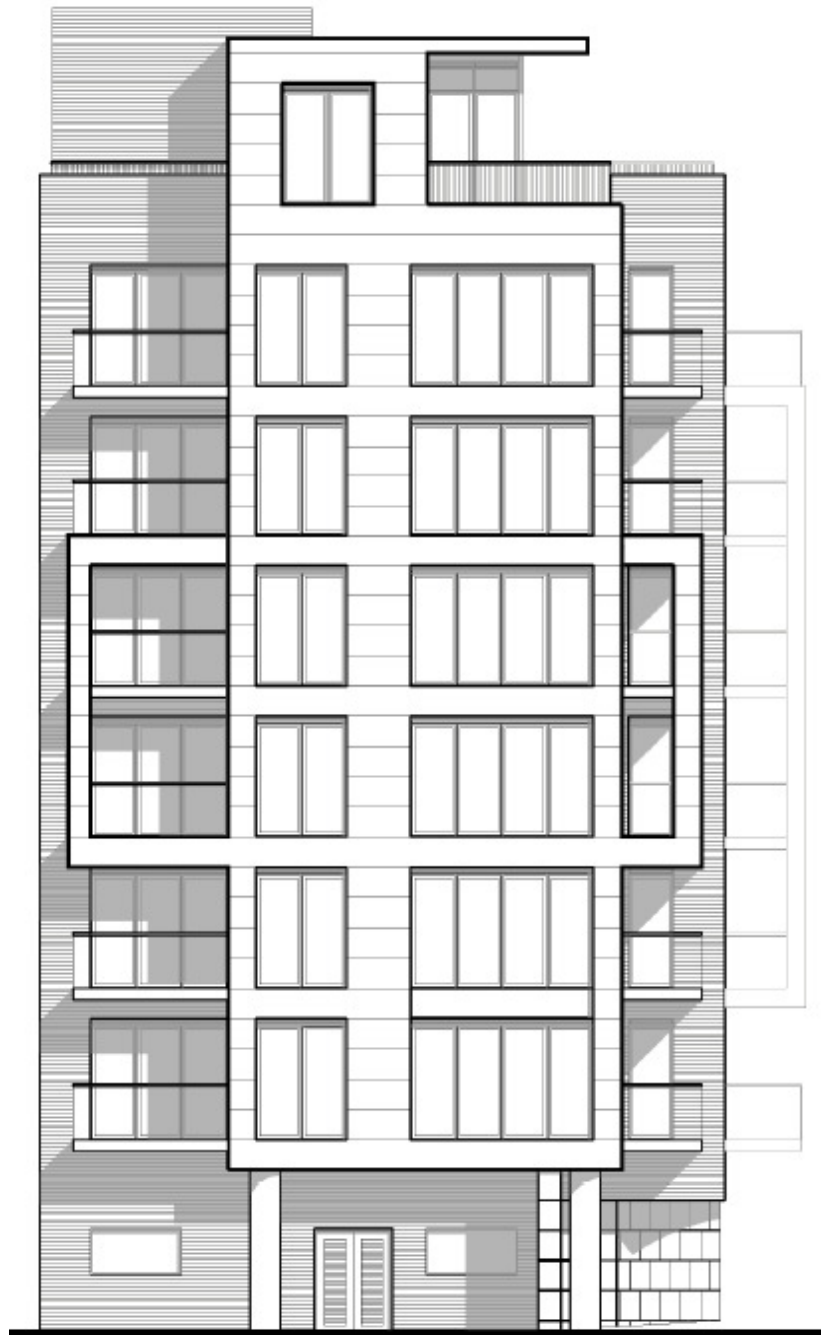
Drawing Ref 12316-PL-15



Block F Elevations - North

Submitted Under Application ref 2013/6627/P

Drawing Ref 12316-PL-15 Rev B



Block F GA Elevations - West

Approved Under Application ref 2013/1924/P

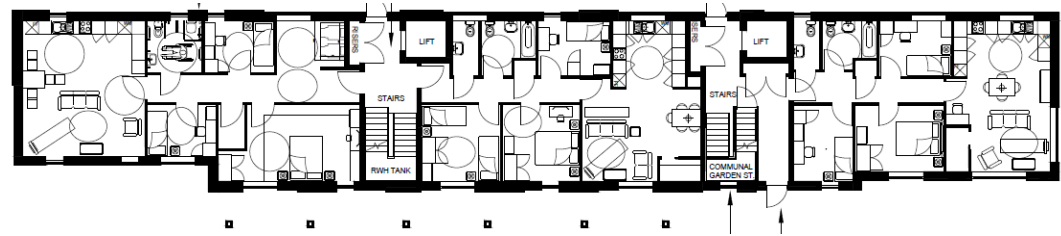
Drawing Ref 12316-PL-15



Block F Elevations - West

Submitted Under Application ref 2013/6627/P

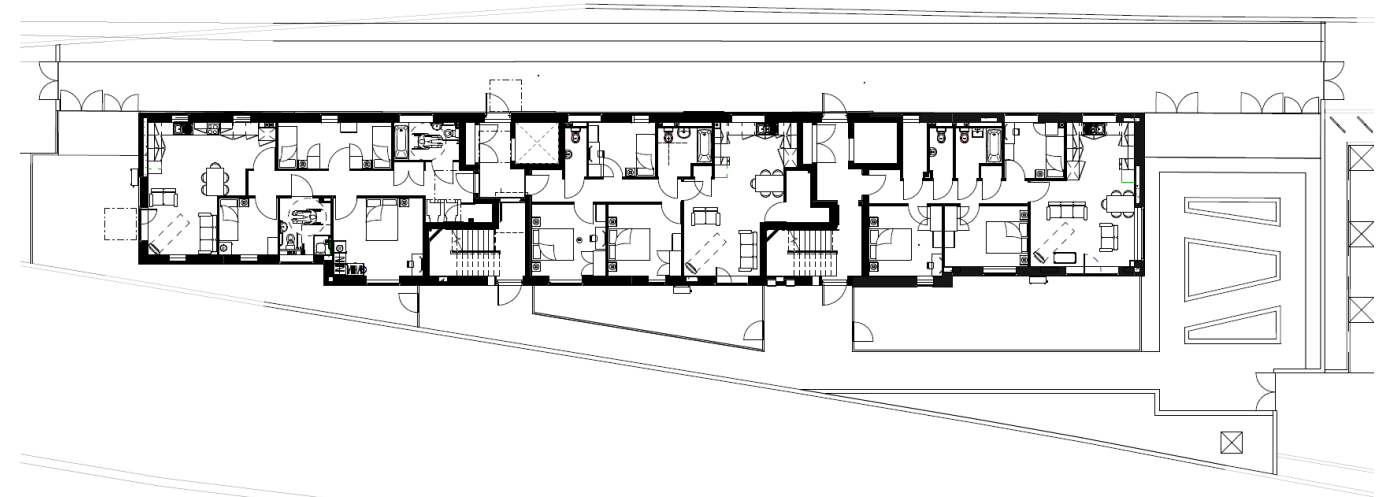
Drawing Ref 12316-PL-15 Rev B



Block G Ground Floor Plan

Submitted Under 2013/6627/P

Drawing Ref 12316-PL-32



Block G Ground Floor Plan

Proposed

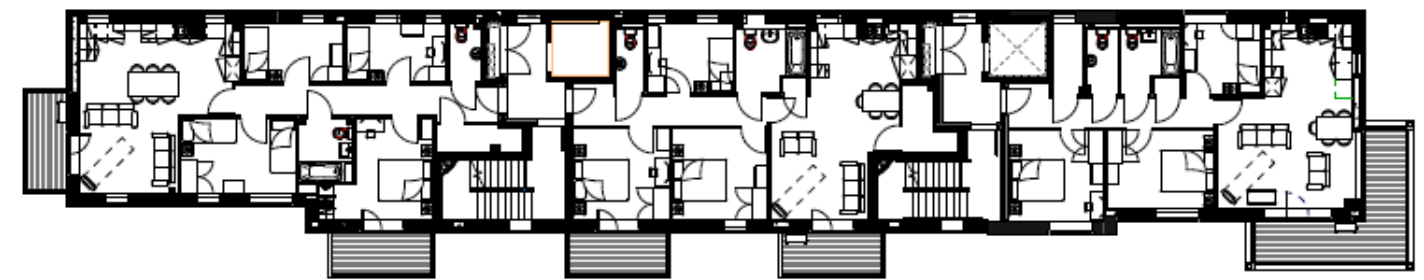
Drawing Ref 12316-PL-07 Rev A



Block G First Floor Plan

Approved Under Application ref 2013/6627/P

Drawing Ref 12316-PL-33



Block G Ground Floor Plan

Proposed

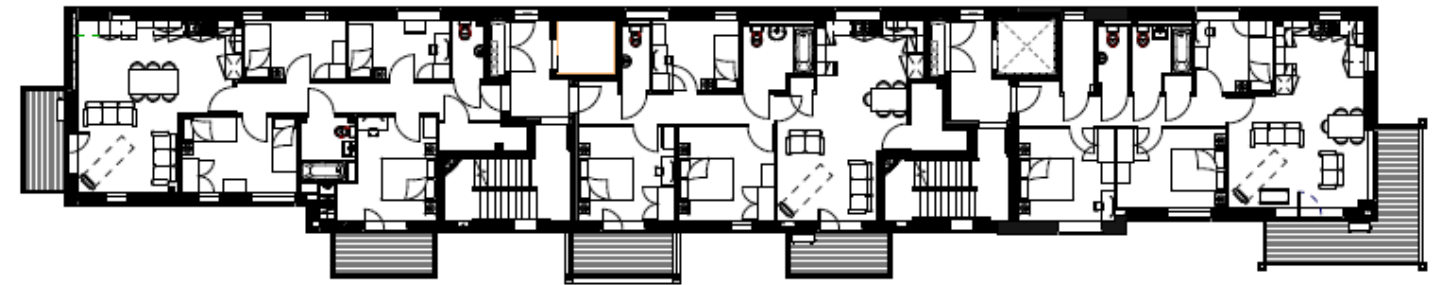
Drawing Ref 12316-PL-07 Rev A



Block G Second Floor Plan

Approved Under Application ref 2013/6627/P

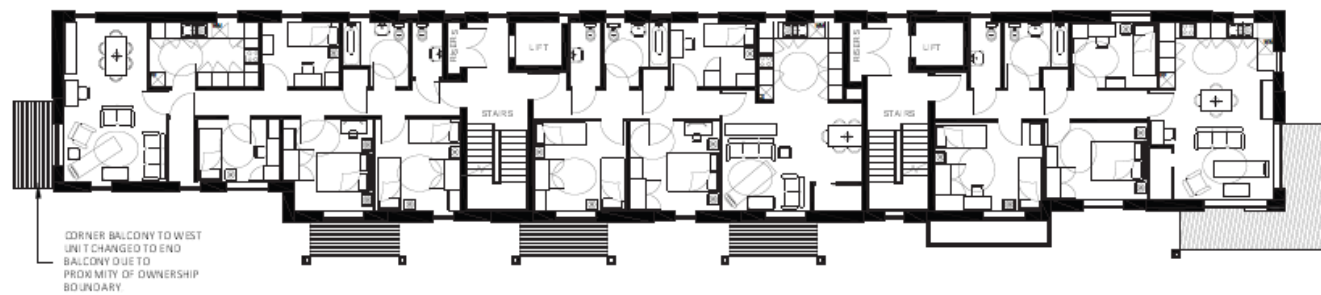
Drawing Ref 12316-PL-34



Block G Second Floor Plan

Proposed

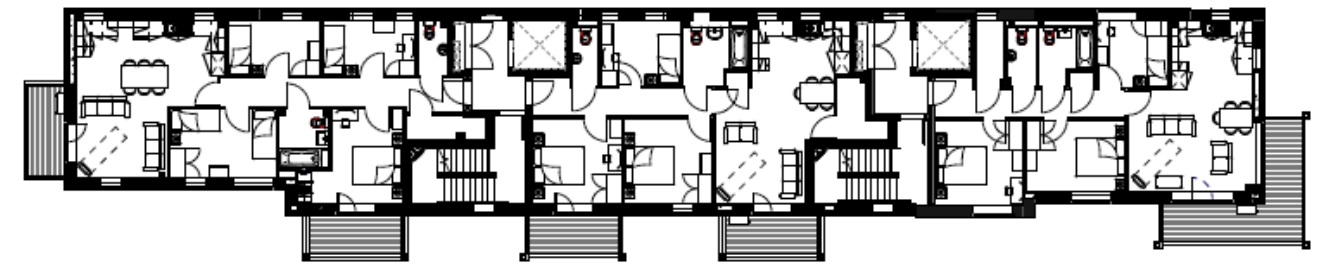
Drawing Ref 12316-PL-07 Rev A



Block G Third Floor Plan

Approved Under Application ref 2013/6627/P

Drawing Ref 12316-PL-35



Block G Third Floor Plan

Proposed

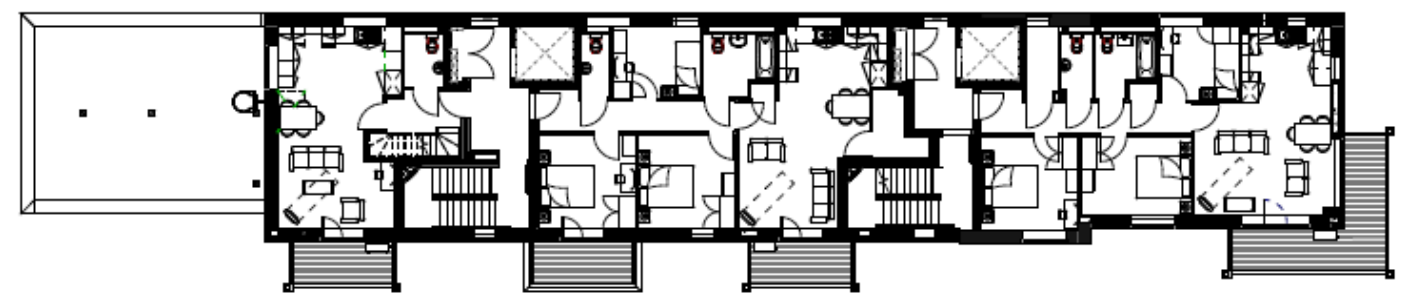
Drawing Ref 12316-PL-07 Rev A



Block G Fourth Floor Plan

Approved Under Application ref 2013/6627/P

Drawing Ref 12316-PL-36



Block G Fourth Floor Plan

Proposed

Drawing Ref 12316-PL-07 Rev A





Block G Fifth Floor Plan

Approved Under Application ref 2013/6627/P

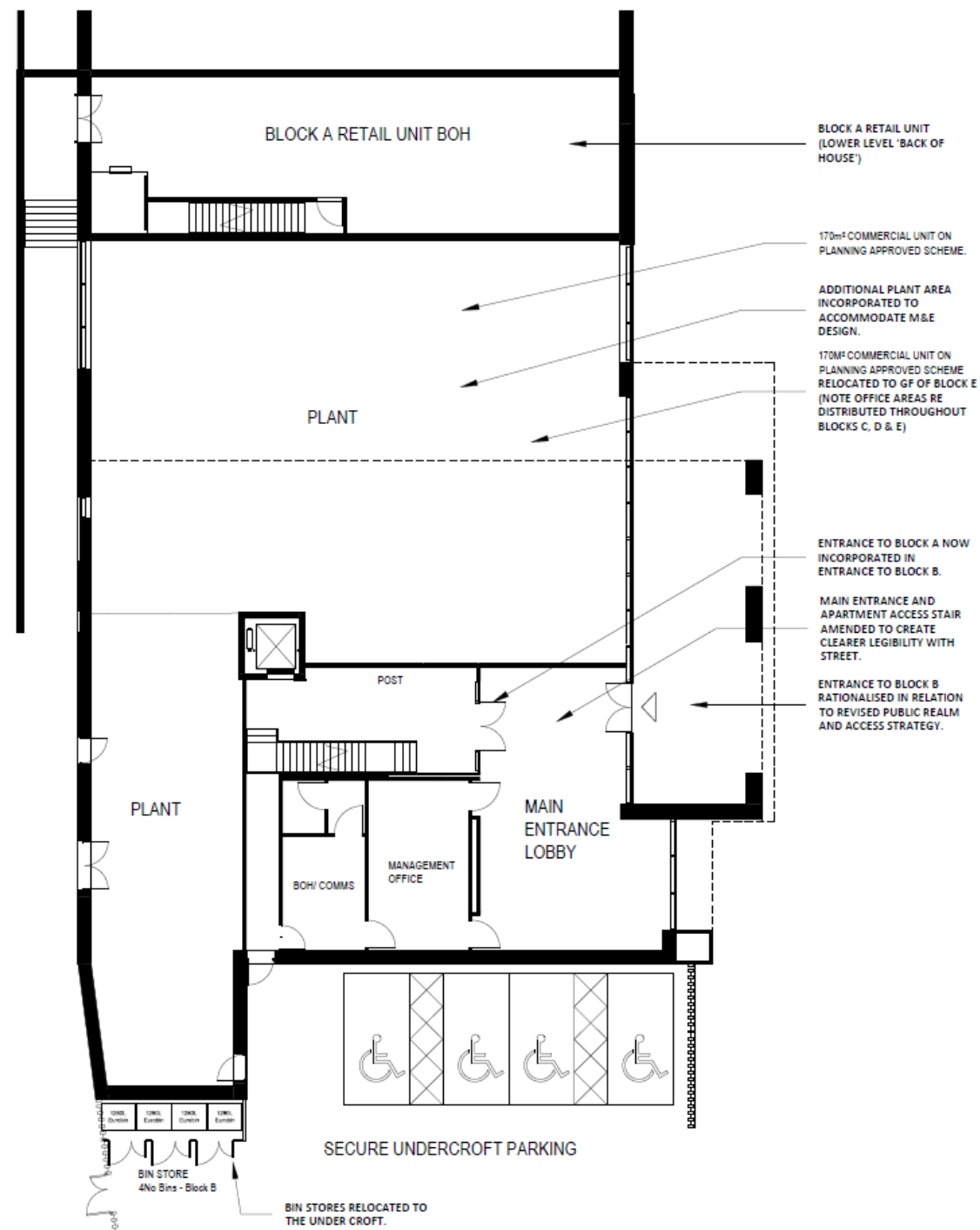
Drawing Ref 12316-PL-37



Block G Fifth Floor Plan

Proposed

Drawing Ref 12316-PL-07 Rev A



Block B Ground Floor Plan

Approved Under Application ref 2013/6627/P

Drawing Ref 12316-PL-27 Rev B



Block B Ground Floor Plan

Proposed

Drawing Ref 12316-PL-27 Rev C



Site Masterplan at Street Level

Submitted Under Application ref 2013/6627/P

Drawing Ref 12316-PL-24 Rev A