



HOLOPHANE®

AcuityBrands.

Expanding the boundaries of lighting™

prismashield[™]
ELITE

prismashield[™] elite

prismashield[™] **ELITE**

Designed to meet the demanding environments of a metro or rail infrastructure application, **Prismashield™ Elite** is a robust, stylish and multi functional luminaire. Prismashield™ Elite can withstand severe physical attack, exposure to weather and vibration.

The luminaire is available with a frosted glass lens for underground tunnels or a polycarbonate lens with internal prisms. Both optics produce a precise symmetric or asymmetric light distribution for even, glare-free illumination helping people feel safe and secure in arduous environments.

Prismashield™ Elite is a versatile lighting solution that can be surface or cornice mounted individually or in continuous runs utilising the infill panels system. An optional integrated surface cable management system can be attached to conceal power, emergency and communications in a complete solution.

optics / light source

- > 1 x 24W HO T5 3000K fluorescent tube
- > 1 x 54W HO T5 3000K fluorescent tube
- > 1 x 49W HO T5 3000K fluorescent tube
- > 2 x 24W HO T5 3000K fluorescent tubes
- > 2 x 54W HO T5 3000K fluorescent tubes
- > 2 x 49W HO T5 3000K fluorescent tubes
- > 1 x 18W T8 3500K fluorescent tube
- > 1 x 36W T8 3500K fluorescent tube
- > 1 x 58W T8 3500K fluorescent tube
- > 2 x 18w T8 3500K fluorescent tubes
- > 2 x 36W T8 3500K fluorescent tubes
- > 2 x 58W T8 3500K fluorescent tubes
- > 2 x 10W 4000K LED tubes
- > 2 x 19W 4000K LED tubes
- > 2000, 4000, 6000, 9000 & 11,000 lumen LED version

approvals

- Designed to: IP659
- Designed to meet: EN60598-2-1
- Designed to meet: BS EN 55015:2006 + A1 2007
- Designed to meet: London Underground
Section 12 compliance

For further information please
visit the Holophane website
www.holophane.co.uk





Glass lens version shown

cable management system



Cable Management System with three channels for cables



End plate for Cable Management System when used with Prismashield Elite **PSE.CMS.SM.EP**



Mitre joint aid mounted to Cable Management System



Mitre joint aid for variable angle mounting (0-90°) **PSE.JMA**



Movable cable retention clip **PSE.CRC**



Cable Management System - cable retention clip **PSE.CRC**

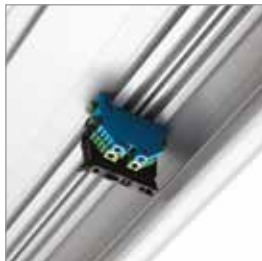
luminaire product features



Hinged removable door



Hinged reflector



DIN-rail integrated into luminaire body



Prismashield Elite infill panel mounted to Cable Management System

infill panels



Clip-in infill panel **PSE.1000/2000/3000.INFILL**



Retaining strap on infill panels ensure safety in the event of an emergency or failure mode **PSE.1000/2000/3000.INFILL**



Cornice version end plate **PSE.CM.EP.C9**

prismashield
ELITE

The Cable Management System and Infill panels can be cut to length on site to aid ease of installation and ensure full on-site flexibility



Prismashield Elite mounted to Cable Management System.

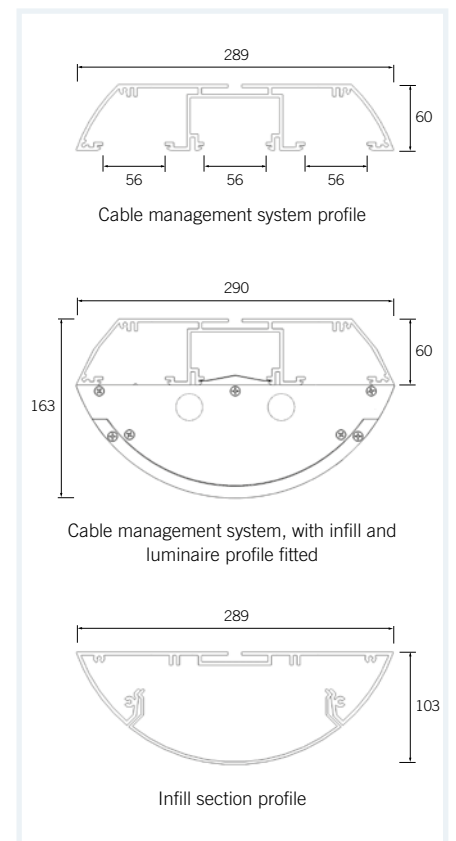
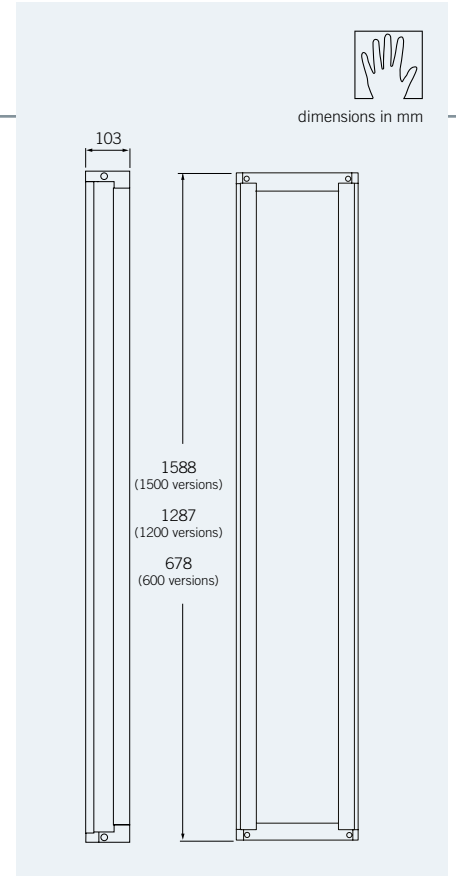
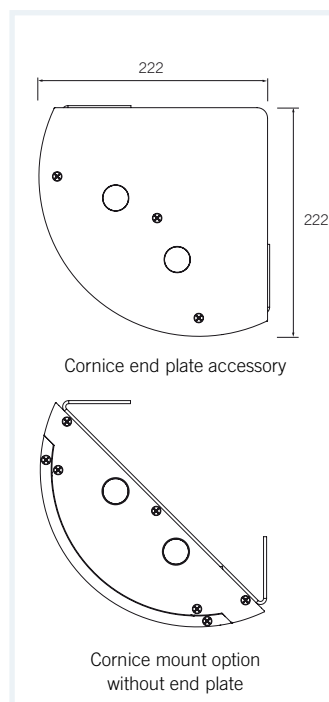
technical



Prismashield Elite and Infill panels surface mounted to Cable Management System continuous run.



- 1 Prismatic polycarbonate lens
- 2 Frosted glass lens



features and benefits

Robust modular construction

- > Suitable for areas prone to vandalism

Suitable for various types of surface/suspended/cornice mounting

- > Versatile mounting locations

Luminaire offers 7 cable entry points

- > Suitable for mounting end to end in continuous runs without compromising IP
- > Flexible on-site wiring and installation

Maintained emergency option

- > Maintained lighting through power cuts

Anti-graffiti coating (optional)

- > Reduces cleaning costs

IP659

- > Fully weatherproof with high impact resistance

Cable Management System

- > Allows integration of cabling for power, communications, emergency & controls as part of the luminaire installation
- > Can be cut to size on site allowing easy and versatile installation

Hinged door assembly

- > Allows secure access to luminaire during maintenance or lamp change
- > Complete lens and door assembly can be replaced

Hinged lamp and reflector assembly

- > Allows toolless access to gear and DIN-rail without having to remove lamps or reflector assembly

Prismatic polycarbonate or frosted glass lens options available

- > Versatile product dependent on application and environment

specification

The luminaire shall consist of an extruded aluminium body combined with LM6 die cast aluminium end caps. The electronic control gear is mounted directly to the luminaire body extrusion. Three 20mm o/d cable entry points to luminaire body and Two 20mm o/d entry points on each end casting to allow through wiring. Integrated DIN rail into luminaire body extrusion. The optics shall be available in either a 3mm thick polycarbonate diffuser lens with internal prisms or a 5.5mm thick frosted (laminated) glass lens that is housed in a complete aluminium framed door assembly that hinges down for ease of maintenance. A choice of T5 or T8 lamps are mounted in a toolless hinged aluminium reflector assembly that provides a symmetric or asymmetric distribution. Bespoke LED system developed around the existing luminaire housing providing a symmetric distribution.

An IP rating of 659 shall be achieved with one piece gasket providing a constant seal. The luminaire shall be suitable for surface or cornice mounting with the ability to through wire, for continuous run mounting, and have the ability to be used in conjunction with a bespoke Cable Management System and infill panels.

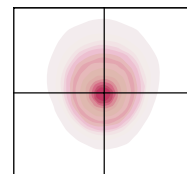
applications

Underpasses, Corridors, Car parks, Airports, Stairwells, Stations, Under canopy areas, Secure units, Hospitals, Prisons, Detention centres, Indoor sports applications and Clean rooms.

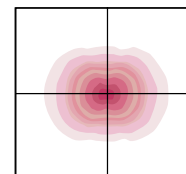
Note: The specifications of the Holophane luminaire and columns represents typical values. All descriptions, illustrations, drawings and specifications in the Holophane catalogue and website represent only general particulars of the goods to which they apply and shall not form part of any contract. The company reserves the right to change specifications at its discretion without prior notification or public announcement.

light distribution

Asymmetric



Symmetric



thermals

Maximum ambient temperature
Lamp dependant : +40° C

Minimum ambient temperature
Lamp dependant : 0° C

weight & thermal data

Lamp Type	Length	Weight (kg)		Operating Temperature (°C)	
		Glass	Poly	Min	Max
124T5	600	7	5	0	40
154T5	1200	tbc	tbc	0	40
149T5	1500	16	11	0	40
224T5	600	7	5	0	40
254T5	1200	tbc	tbc	0	40
249T5	1500	16	11	0	40
118T8	600	7	5	0	40
136T8	1200	tbc	tbc	0	40
158T8	1500	16	11	0	40
218T8	600	7	5	0	40
236T8	1200	tbc	tbc	0	40
258T8	1500	16	11	0	40
2LT164	600	7	5	0	25
L024	600	7	5	tbc	tbc
L054	1200	tbc	tbc	tbc	tbc
L094	1200	tbc	tbc	tbc	tbc
L064	1500	16	11	tbc	tbc
L114	1500	16	11	tbc	tbc

For .ME (Maintained Emergency) option add 0.4kg.
Maximum operating temperature for .ME option (Maintained Emergency) is 35°C.
3 metres of CMS: 18kg.

ordering details

To find out more
please visit
www.holophane.co.uk

Code	
PSE	Prismashield Elite anti-vandal fluorescent luminaire
Code	Lamp Type (required)
.124T5	1 x 24W HO T5 fluorescent tubes 3000K - nominal length 600mm
.154T5	1 x 54W HO T5 fluorescent tubes 3000K - nominal length 1200mm
.149T5	1 x 49W HO T5 fluorescent tubes 3000K - nominal length 1500mm
.224T5	2 x 24W HO T5 fluorescent tubes 3000K - nominal length 600mm
.254T5	2 x 54W HO T5 fluorescent tubes 3000K - nominal length 1200mm
.249T5	2 x 49W HO T5 fluorescent tubes 3000K - nominal length 1500mm
.118T8	1 x 18W T8 fluorescent tubes 3500K - nominal length 600mm
.136T8	1 x 36W T8 fluorescent tubes 3500K - nominal length 1200mm
.158T8	1 x 58W T8 fluorescent tubes 3500K - nominal length 1500mm
.218T8	2 x 18W T8 fluorescent tubes 3500K - nominal length 600mm
.236T8	2 x 36W T8 fluorescent tubes 3500K - nominal length 1200mm
.258T8	2 x 58W T8 fluorescent tubes 3500K - nominal length 1500mm
.2LT164	2 x 10W T8 LED tube 4000°K producing 1,600lm (nominal length 600mm)*
.2LT334	2 x 19W T8 LED tube 4000°K producing 3,300lm (nominal length 1200mm)*
.L024	LED light engine producing c2000lm with a nominal 4000K colour temperature (nominal length 600mm)
.L054	LED light engine producing c5000lm with a nominal 4000K colour temperature (nominal length 1200mm)
.L094	LED light engine producing c9000lm with a nominal 4000K colour temperature (nominal length 1200mm)
.L064	LED light engine producing c7000lm with a nominal 4000K colour temperature (nominal length 1500mm)
.L114	LED light engine producing c11000lm with a nominal 4000K colour temperature (nominal length 1500mm)
Code	Light Distribution
.SY	Symmetric
.AY	Asymmetric (not available with LED)
Code	Lens
.PPL	Prismatic polycarbonate lens
.FGL	Frosted glass lens
.PFL	Prismatic polycarbonate frosted lens†
Code	Mounting (luminaires only) - for cable management system order the relevant CMS and infill accessories
.SM	Surface Mount
.CM	Cornice Mount
Code	Paint Finish
.C1	White (RAL 9016)
.C9	Silver (RAL 9006)
.RAL****	RAL colour (customer choice)
Code	Options
.ME	Integral 3 hour maintained emergency option**
.D2	DALI HF electronic control gear**
.DEM2	DALI HF electronic control gear - integral 3 hour maintained emergency option**
.AG	Anti-graffiti coating on prismatic polycarbonate lens option only
Example	PSE .254T5 .SY .PPL .SM .C9 .ME

* Only available with .SY option, ** Not available with lamp options .2LT164 & .2LT334, †only available with .L024, .L054, L064, L094 & L114

luminaire accessories

cable management system & accessories
3 metre extrusion length to be cut / mitred on site by others

Infill bodies, panels and end plates

compatible with CMS mounting or stand alone luminaire mounting

Code	Description
PSE.VK	Key for vandal resistant screw suitable for Prismashield Elite (PSE) luminaire
PSE.CMS.SM.C1	Prismashield Elite 3000m length of surface mount cable management system. White (RAL9016)
PSE.CMS.SM.C9	Prismashield Elite 3000m length of surface mount cable management system. Silver (RAL9006)
PSE.CMS.SM.EPC1	Prismashield Elite surface cable management end plate. White (RAL9016)
PSE.CMS.SM.EPC9	Prismashield Elite surface cable management end plate. Silver (RAL9006)
PSE.CRC	Cable retention clips to be used in conjunction with Cable Management System (pack of 9)
PSE.JMA	Infill/Cable Management System variable 0-90° mitre joint mounting aid (1 required per joint)
PSE.1000.INFILL.C1	Prismashield Elite blanking infill body (1000mm nominal length). White (RAL9016)
PSE.1000.INFILL.C9	Prismashield Elite blanking infill body (1000mm nominal length). Silver (RAL9006)
PSE.2000.INFILL.C1	Prismashield Elite blanking infill body (2000mm nominal length). White (RAL9016)
PSE.2000.INFILL.C9	Prismashield Elite blanking infill body (2000mm nominal length). Silver (RAL9006)
PSE.3000.INFILL.C1	Prismashield Elite blanking infill body (3000mm nominal length). White (RAL9016)
PSE.3000.INFILL.C9	Prismashield Elite blanking infill body (3000mm nominal length). Silver (RAL9006)
PSE.1000.INFILL.CM.C1	Prismashield Elite cornice mount blanking infill body (1000mm nominal length). White (RAL9016)
PSE.1000.INFILL.CM.C9	Prismashield Elite cornice mount blanking infill body (1000mm nominal length). Silver (RAL9006)
PSE.2000.INFILL.CM.C1	Prismashield Elite cornice mount blanking infill body (2000mm nominal length). White (RAL9016)
PSE.2000.INFILL.CM.C9	Prismashield Elite cornice mount blanking infill body (2000mm nominal length). Silver (RAL9006)
PSE.3000.INFILL.CM.C1	Prismashield Elite cornice mount blanking infill body (3000mm nominal length). White (RAL9016)
PSE.3000.INFILL.CM.C9	Prismashield Elite cornice mount blanking infill body (3000mm nominal length). Silver (RAL9006)
PSE.INFILL.EP.C1	End plate for Prismashield Elite infill. White (RAL9016) Not required for Cornice version
PSE.INFILL.EP.C9	End plate for Prismashield Elite infill. Silver (RAL9006) Not required for Cornice version
PSE.CM.EPC1	Prismashield Elite cornice end plate. White (RAL9016)
PSE.CM.EPC9	Prismashield Elite cornice end plate. Silver (RAL9006)
PSE.JMA	Infill/Cable Management System variable 0-90° mitre joint mounting aid (1 required per joint)



PSE.CRC



PSE.JMA



PSE.1000/2000/3000.INFILL



PSE.CM.EPC9



PSE.CMS.SM.EP



PSE.INFILL.EP

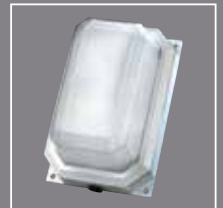
Other Holophane
rail and metro
products



Prismashield™



Metrolux™



Widerlite™



Ecapsule



HOLOS2™ Controls

prismashield[™] **ELITE**

Holophane Europe Limited
Bond Avenue, Bletchley, Milton Keynes MK1 1JG United Kingdom
Telephone: +44 (0) 1908 649292 UK Fax: +44 (0) 1908 367618
International Fax: +44 (0) 1908 272029
E-mail: info@holophane.co.uk

www.holophane.co.uk



Part of the
Rail Solutions
range