

notes

- DO NOT SCALE FROM THIS DRAWING
- THIS DRAWING TO BE READ IN CONJUNCTION WITH RELEVANT ARCHITECTURAL AND STRUCTURAL DRAWINGS, OTHER SERVICES DRAWINGS AND SPECIFICATIONS

LEGEND

- ① DENOTES 1 No 80mm DIA PVC CABLE DUCT
- ② DENOTES 2 No 80mm DIA PVC CABLE DUCTS
- ③ DENOTES 3 No 80mm DIA PVC CABLE DUCTS
- ⊙ A 1 No LED LUMINAIRE HEAD MOUNTED ON A 6 METER SINGLE HEAD GALVANISED TUBULAR BASE COMPARTMENT COLUMN SUITABLE FOR DIRECT EMBEDMENT. LUMINAIRE SUPPLIED BY ELECTRICAL CONTRACTOR BUT INSTALLED BY GROUND WORK CONTRACTOR. GROUND WORK CONTRACTOR TO SUPPLY AND INSTALL A FULL CIRCLE COLUMN SAFETY PROTECTION BARRIER
- ⊙ B 2 No LED LUMINAIRE HEADS MOUNTED ON A 6 METER TWIN HEAD GALVANISED TUBULAR BASE COMPARTMENT COLUMN SUITABLE FOR DIRECT EMBEDMENT. LUMINAIRE SUPPLIED BY ELECTRICAL CONTRACTOR BUT INSTALLED BY GROUND WORK CONTRACTOR. GROUND WORK CONTRACTOR TO SUPPLY AND INSTALL A FULL CIRCLE COLUMN SAFETY PROTECTION BARRIER
- ⊙ C SOFFIT MOUNTED LUMINAIRE SUPPLIED AND INSTALLED BY ELECTRICAL CONTRACTOR
- ⊙ D WALL MOUNTED LUMINAIRE SUPPLIED AND INSTALLED BY ELECTRICAL CONTRACTOR
- R ■ 450x600 CABLE ACCESS PIT
- S ■ 300x300 CABLE ACCESS PIT
- T ■ 450x450 CABLE ACCESS PIT
- ⊙ Traffic Management CCTV Column (By Others)

CABLE DUCTS TO RISE UP ADJACENT TO BUILDING FOR CABLE ENTRY INTO LOWER GROUND FLOOR SUB-STATION. C MAIN DISTRIBUTION BOARD

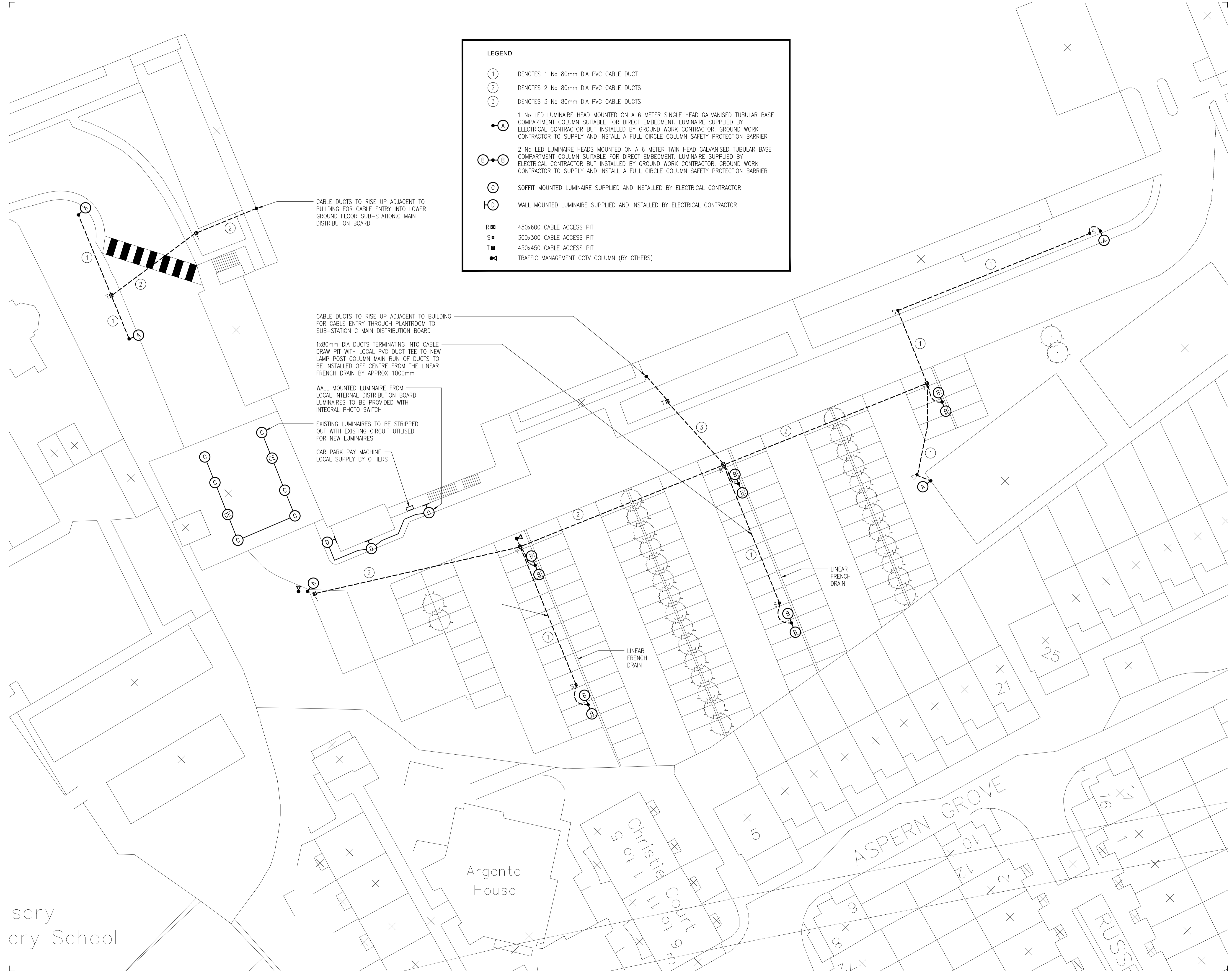
CABLE DUCTS TO RISE UP ADJACENT TO BUILDING FOR CABLE ENTRY THROUGH PLANTROOM TO SUB-STATION C MAIN DISTRIBUTION BOARD

1x80mm DIA DUCTS TERMINATING INTO CABLE DRAW PIT WITH LOCAL PVC DUCT TEE TO NEW LAMP POST COLUMN MAIN RUN OF DUCTS TO BE INSTALLED OFF CENTRE FROM THE LINEAR FRENCH DRAIN BY APPROX 1000mm

WALL MOUNTED LUMINAIRE FROM LOCAL INTERNAL DISTRIBUTION BOARD LUMINAIRES TO BE PROVIDED WITH INTEGRAL PHOTO SWITCH

EXISTING LUMINAIRES TO BE STRIPPED OUT WITH EXISTING CIRCUIT UTILISED FOR NEW LUMINAIRES

CAR PARK PAY MACHINE. LOCAL SUPPLY BY OTHERS

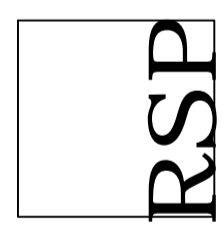


C1	15.05.15	CONSTRUCTION PHASE ISSUE	JVP	DPH
rev	date	description	dm	chk

The Richard Stephens Partnership Limited
 Consulting Engineers

Mill Court
 Mill Hill
 Edenbridge
 Kent TN8 5DB

Tel: 01732 782300
 Fax: 01732 782340
 E-mail: mail@therfsp.co.uk
 Website: www.therfsp.co.uk



client
**ROYAL FREE LONDON
 NHS FOUNDATION TRUST**

architect
AHP ARCHITECTS & SURVEYORS LTD

project
**ROYAL FREE HOSPITAL
 REAR CAR PARK UPGRADE**

title
PROPOSED GROUND WORK LAYOUT

date	MAY 2015	scale	1:250 @ A1
designed	TRF	cad	JVP/DMP
checked	DPH	approved	

CONSTRUCTION PHASE DRAWING

drawing no. **1547E101** rev **C1**

sary
 ary School