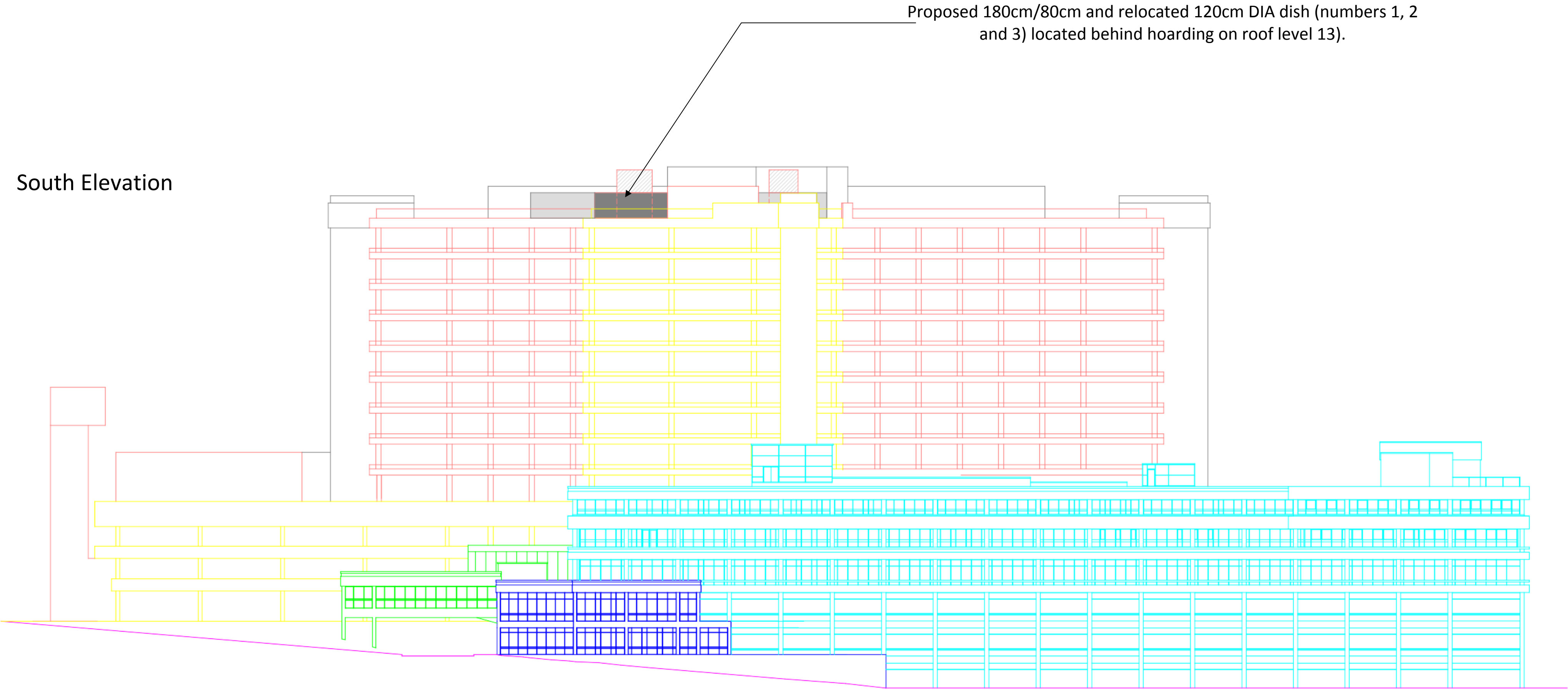


South Elevation



Proposed 180cm/80cm and relocated 120cm DIA dish (numbers 1, 2 and 3) located behind hoarding on roof level 13).

North Elevation



Key



www.connexnetwork.co.uk  
0700 345 0037/38

Draft	Draft	26/06/2015	C Nutley
REV.	DESCRIPTION	DATE	BY
REV.	DESCRIPTION	DATE	BY
REV.	DESCRIPTION	DATE	BY
REV.	DESCRIPTION	DATE	BY

DESCRIPTION

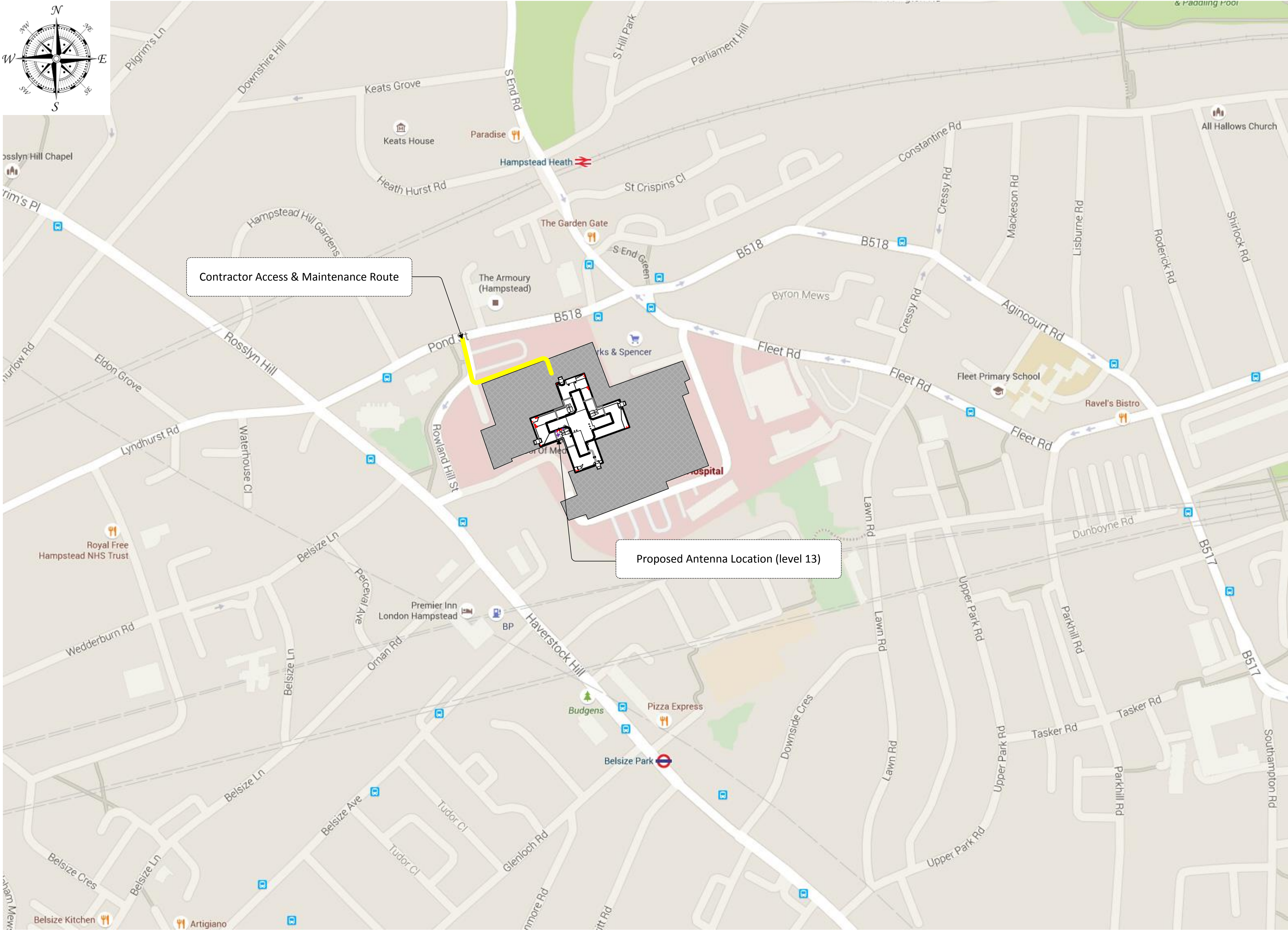
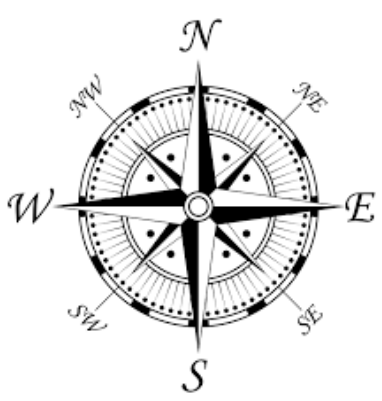
Royal Free Hospital,  
Pond St, London  
NW3 2QG

TITLE

Proposed Hospedia TV solution Satellite  
Dish Installation Site Elevation

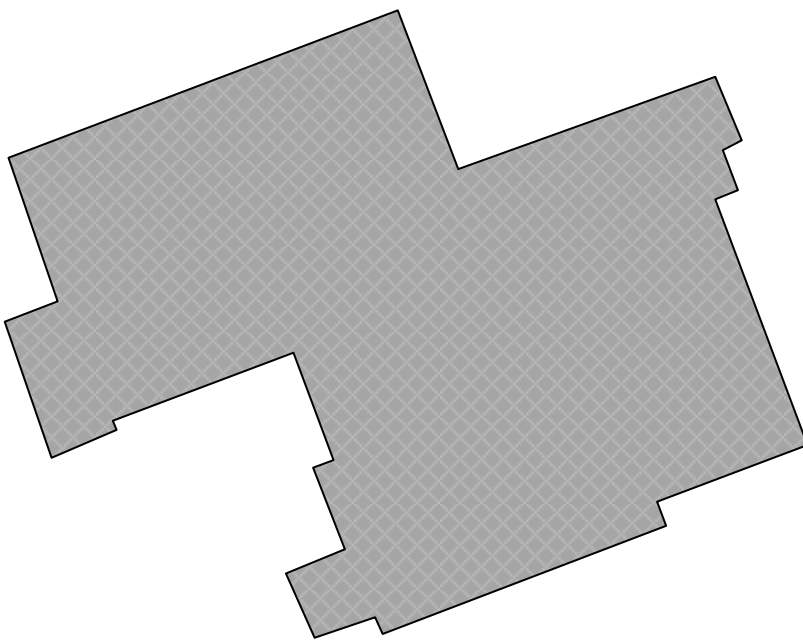
SCALE	NTS	DRAWN BY	Clive Nutley
REVISED	26/06/2015	FILENAME	HOSP-RF-13EL



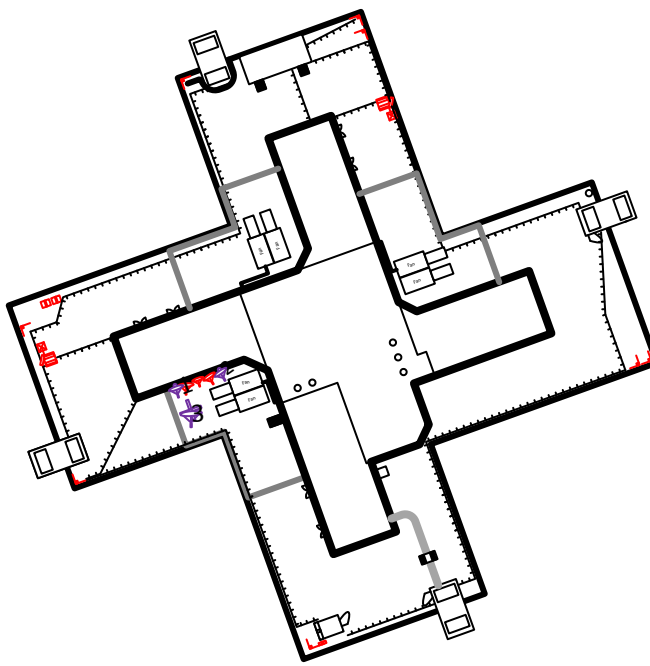


Key

Royal Free Hospital - Pond St, London  
NW3 2QG



Royal Free Hospital – Roof Layout (level 13)



www.connexnetwork.co.uk  
0700 345 0037/38

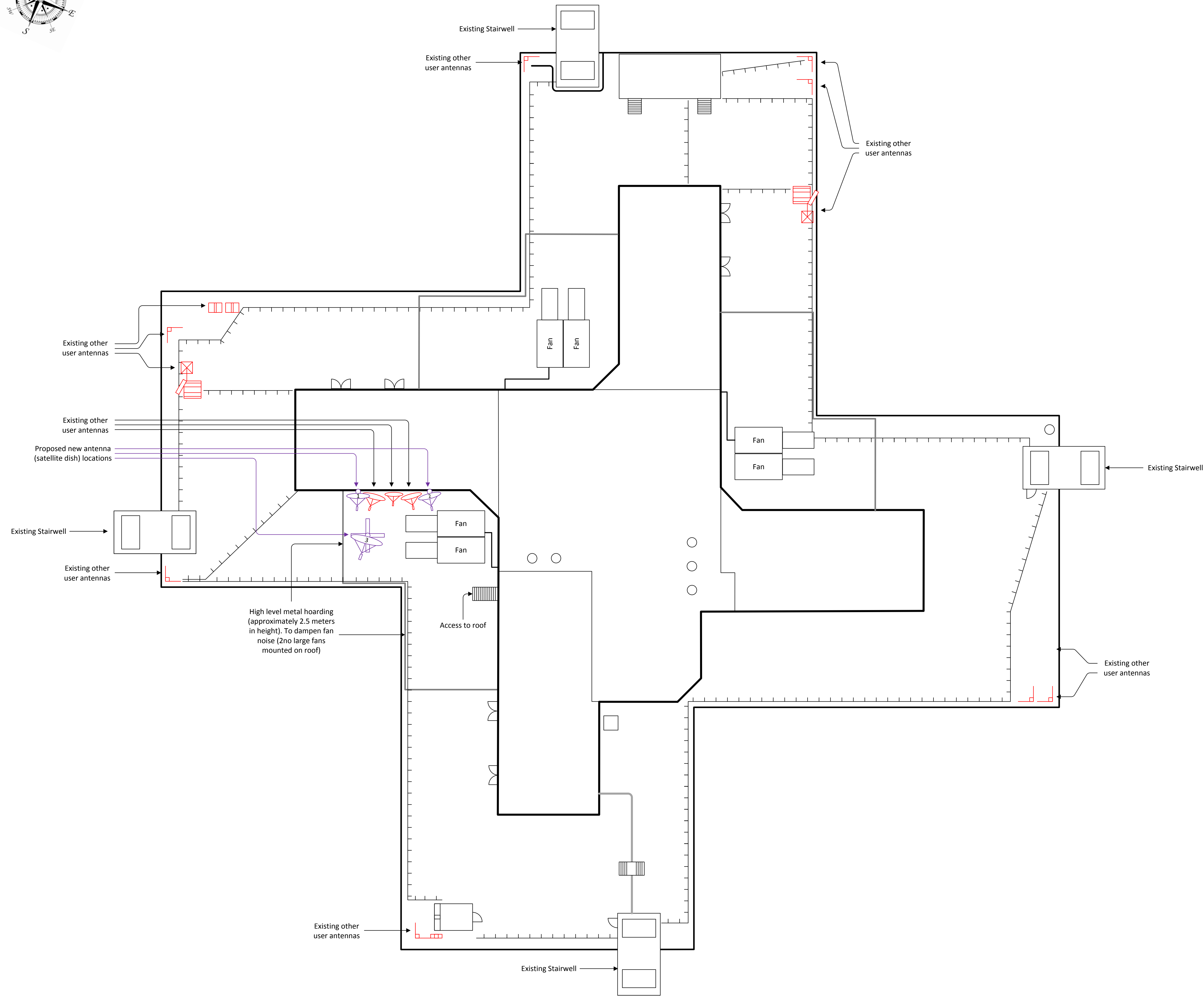
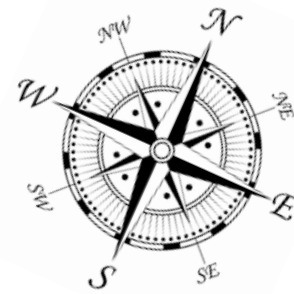
Draft	Draft	26/06/2015	C Nutley
REV.	DESCRIPTION	DATE	BY
REV.	DESCRIPTION	DATE	BY
REV.	DESCRIPTION	DATE	BY
REV.	DESCRIPTION	DATE	BY

DESCRIPTION
Royal Free Hospital, Pond St, London NW3 2QG

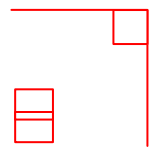
TITLE
Proposed Hospedia TV solution Satellite Dish Installation Site Location

SCALE	NTS	DRAWN BY	Clive Nutley
REVISED	26/06/2015	FILENAME	HOSP-RF-13LO

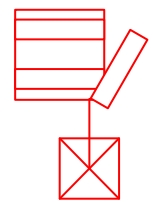




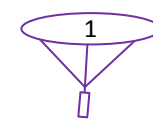
Key



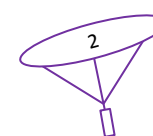
Other providers antenna, already installed in locations shown.



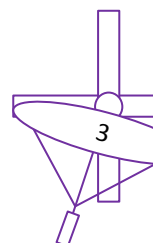
Other providers antenna, already installed in locations shown.



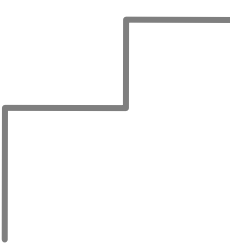
Antenna 1, new 800mm dish to be mounted to the wall via a wall bracket.



Antenna 2, which is an existing dish being relocated from antenna location 3. Antenna 2 will be wall mounted as per antenna 1.



Antenna 3, new 1800mm dish to be mounted on a free standing non-penetrating roof mount (Baird B6116).



Currently the proposed area for the installation of new satellite dishes (antenna) is surrounded by a perimeter wall (hoarding) to the external roof edges. The wall was installed to minimise noise transmitted from the fan behind the wall to nearby residents.



Cabling containment is currently installed around the roof area. We will not need to use this containment as all cabling feeding the new antennas will feed through the wall of the lift motor room, which is the proposed wall to have antenna 1 and 2 mounted on.



**Connex**  
Network Solutions Ltd

www.connexnetwork.co.uk

0700 345 0037/38

Draft	Draft	26/06/2015	C Nutley
REV.	DESCRIPTION	DATE	BY
REV.	DESCRIPTION	DATE	BY
REV.	DESCRIPTION	DATE	BY
REV.	DESCRIPTION	DATE	BY

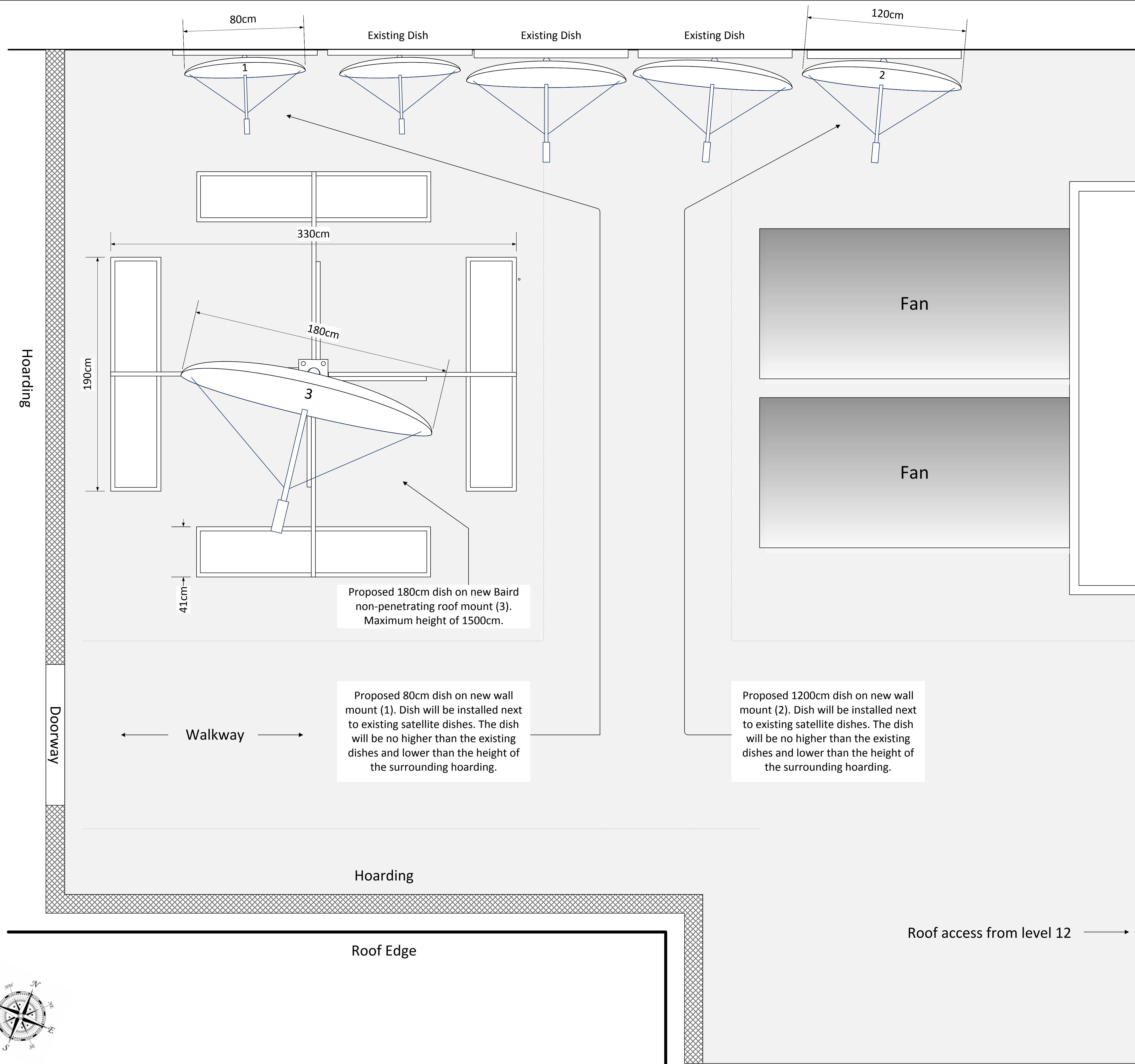
DESCRIPTION

Royal Free Hospital,  
Pond St, London  
NW3 2QG

TITLE

Proposed Hospedia TV solution Satellite  
Dish Installation Site Layout

SCALE	NTS	DRAWN BY	Clive Nutley
REVISED	26/06/2015	FILENAME	HOSP-RF-13LA



Key

Example of dish and mount installed on a flat room. Baird mount shown here.



www.connexnetwork.co.uk  
0700 345 0037/38

Draft	Draft	26/06/2015	C Nutley
REV.	DESCRIPTION	DATE	BY
REV.	DESCRIPTION	DATE	BY
REV.	DESCRIPTION	DATE	BY
REV.	DESCRIPTION	DATE	BY

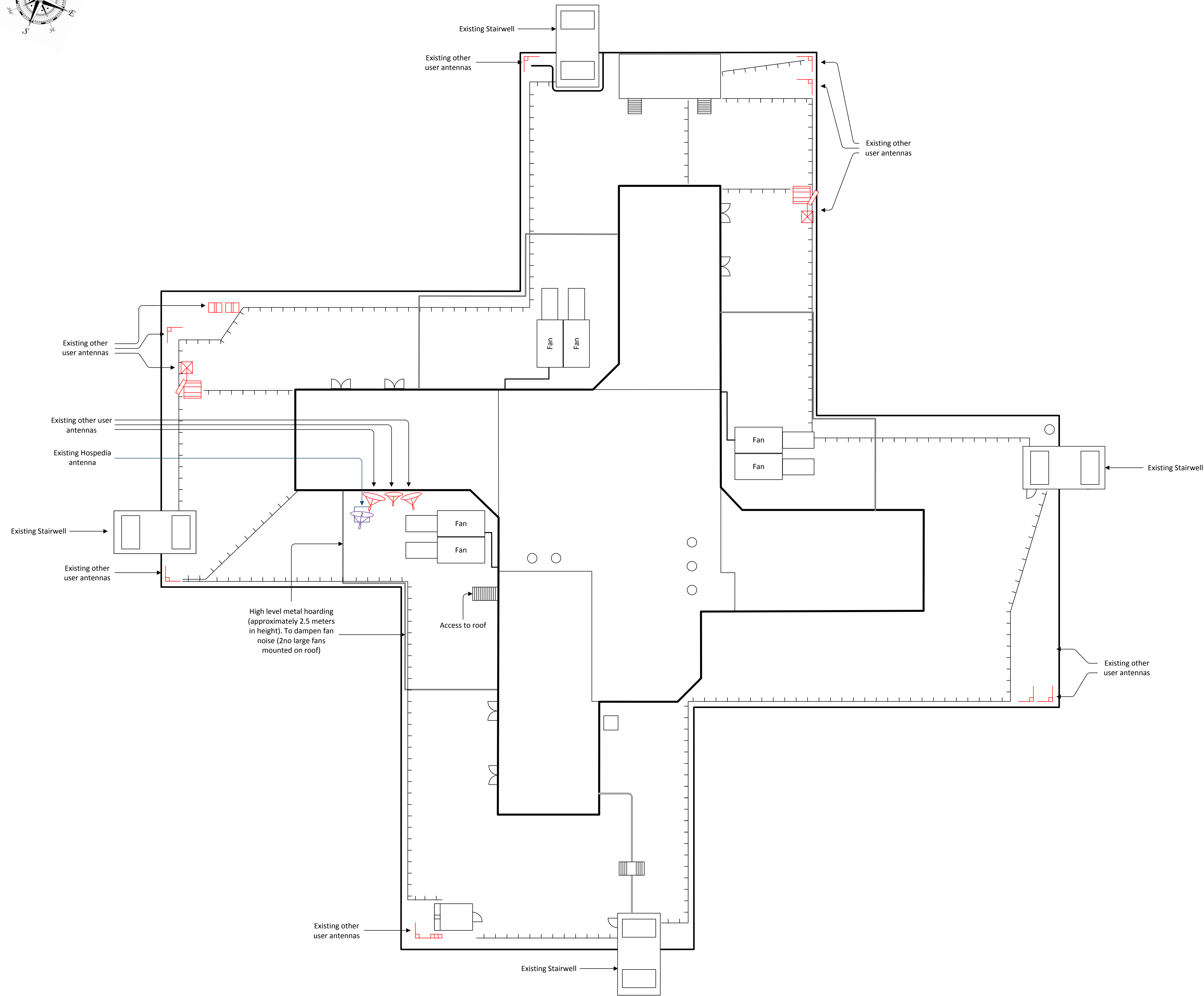
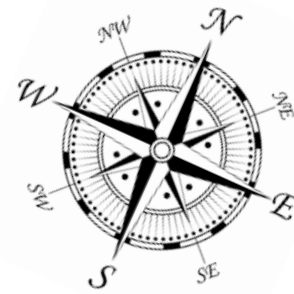
DESCRIPTION

Royal Free Hospital,  
Pond St, London  
NW3 2QG

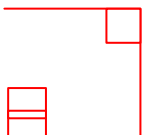
TITLE

Proposed Hospedia TV solution Satellite  
Dish Installation Equipment Layout

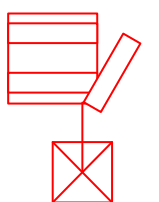
SCALE	NTS	DRAWN BY	Clive Nutley
REVISED	26/06/2015	FILENAME	HOSP-RF-13EQ



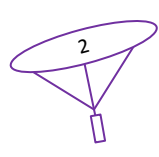
Key




Other providers antenna, already installed in locations shown.



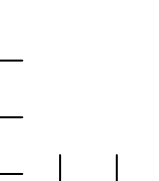
Other providers antenna, already installed in locations shown.



Existing Hospedia 1200mm satellite dish (antenna) mounted on a non-penetrating roof mount. The antenna currently feeds the Hospedia bedside system with digital terrestrial TV channels and some Sky channels.



Currently the proposed area for the installation of new satellite dishes (antenna) is surrounded by a perimeter wall (hording) to the external roof edges. The wall was installed to minimise noise transmitted from the fan behind the wall to nearby residents.



Cabling containment is currently installed around the roof area. We will not need to use this containment as all cabling feeding the new antennas will feed through the wall of the lift motor room, which is the proposed wall to have antenna 1 and 2 mounted on.



www.connexnetwork.co.uk  
0700 345 0037/38

Draft	Draft	17/07/2015	C Nutley
REV.	DESCRIPTION	DATE	BY
REV.	DESCRIPTION	DATE	BY
REV.	DESCRIPTION	DATE	BY
REV.	DESCRIPTION	DATE	BY

DESCRIPTION

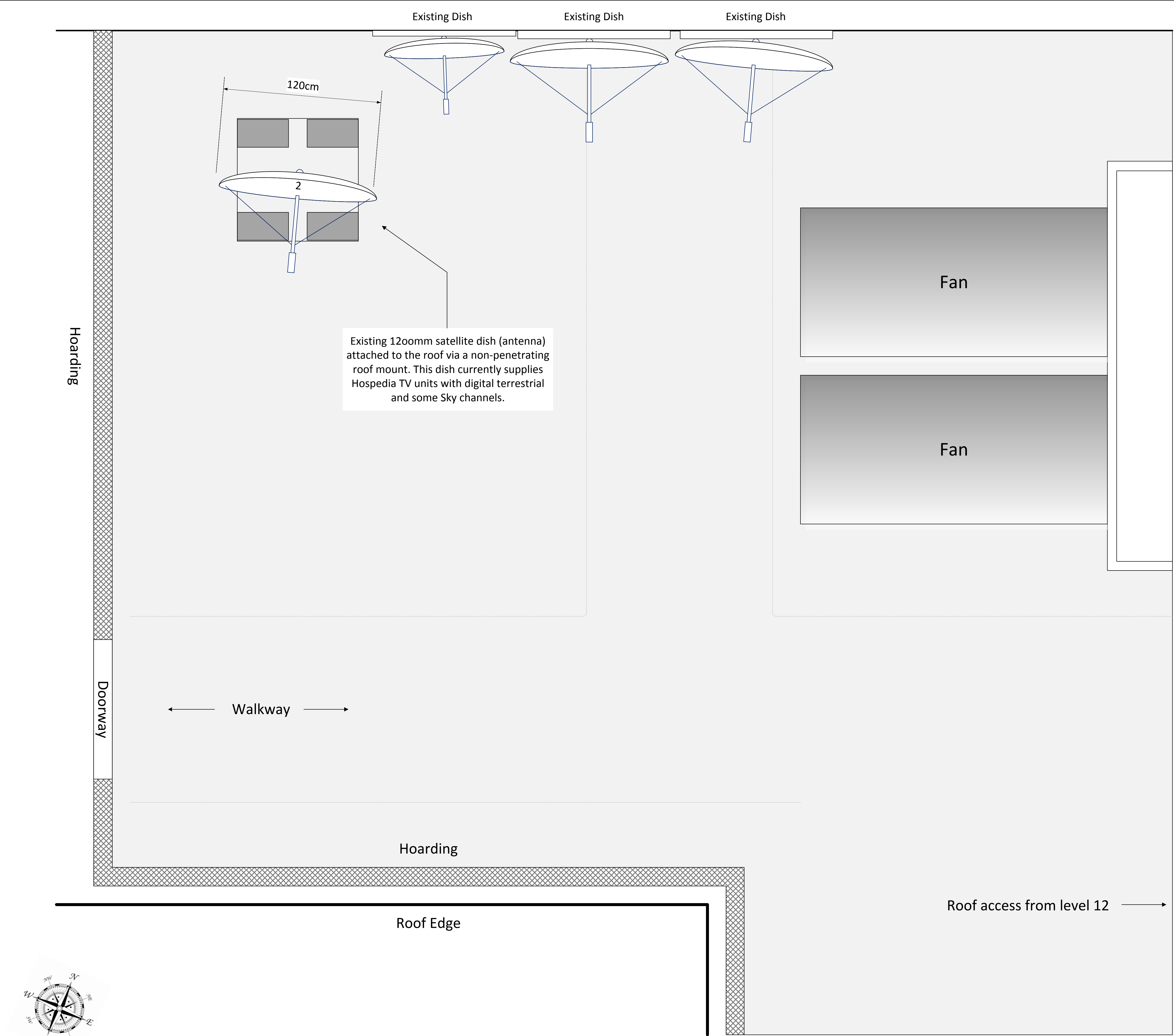
Royal Free Hospital,  
Pond St, London  
NW3 2QG

TITLE

Existing Royal Free Hospital Satellite  
Dish Installation Site Layout

SCALE	NTS	DRAWN BY	Clive Nutley
REVISED	26/06/2015	FILENAME	HOSP-RF-13ELA





Key



www.connexnetwork.co.uk  
0700 345 0037/38

Draft	Draft	17/07/2015	C Nutley
REV.	DESCRIPTION	DATE	BY
REV.	DESCRIPTION	DATE	BY
REV.	DESCRIPTION	DATE	BY
REV.	DESCRIPTION	DATE	BY

DESCRIPTION
Royal Free Hospital, Pond St, London NW3 2QG

TITLE
Royal Free Hospital existing TV solution Satellite Dish Installation Equipment Layout

SCALE	DRAWN BY
NTS	Clive Nutley

REVISED	FILENAME
26/06/2015	HOSP-RF-13EEQ