



Air Conditioning Technical Data

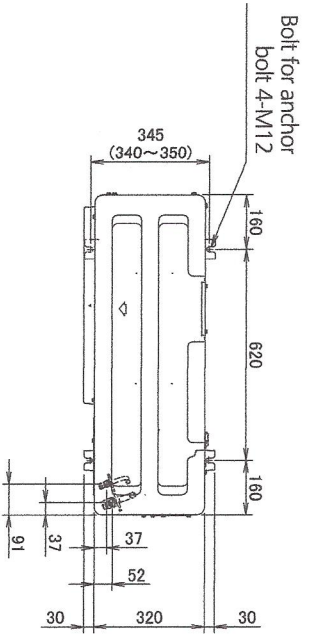


EEDEN13-100

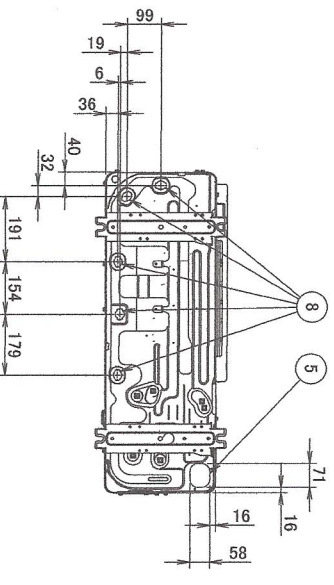
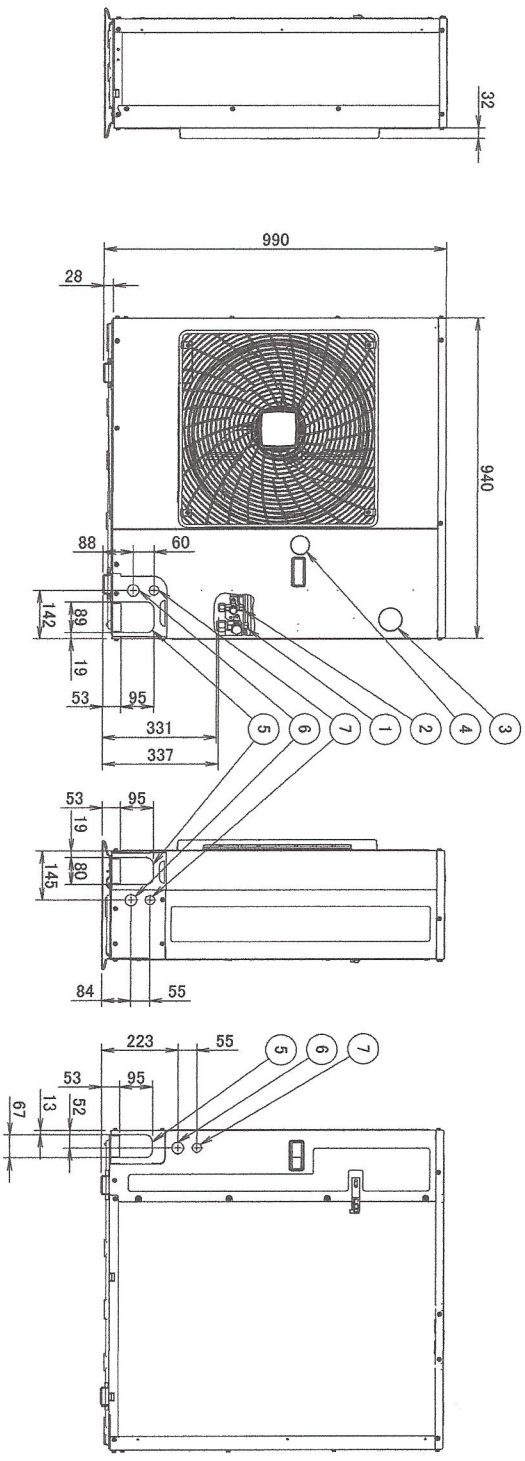
RZQSG-L(3/8)V1



RZQSG100-125L8V1

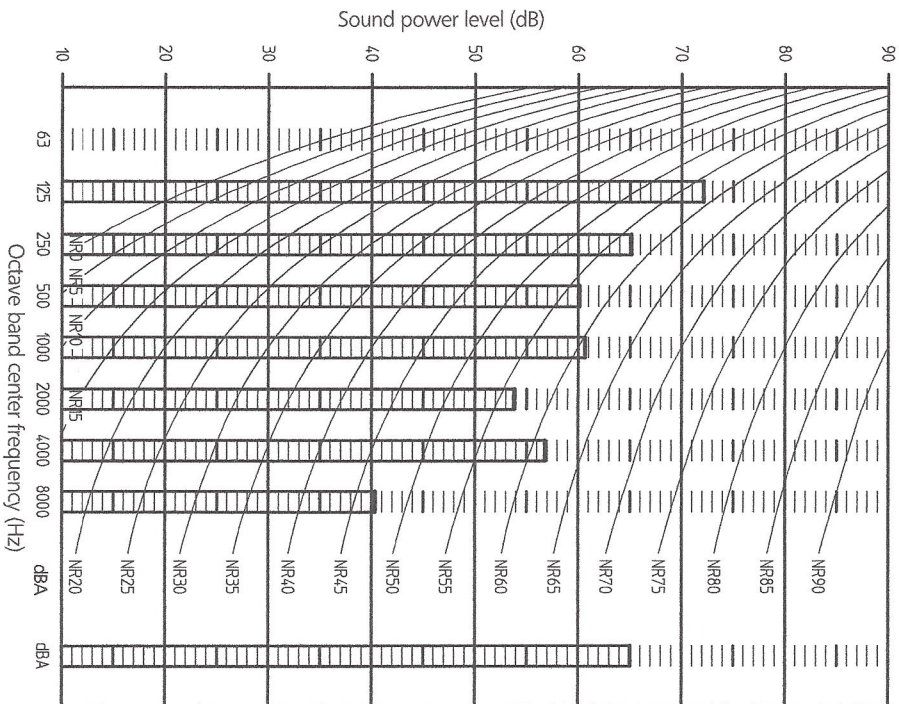


- 1 Gas pipe connection ϕ 15.9 flare
- 2 Liquid pipe connection - ϕ 9.5 flare
- 3 Service port (in the unit)
- 4 Grounding terminal M5 (in switch box)
- 5 Refrigerant piping intake
- 6 Power supply wiring intake (knock out hole ϕ 34)
- 7 Control wiring intake (Knock out hole ϕ 27)
- 8 Drain outlet



11 - 1 Sound Power Spectrum

RZQSG7113V1

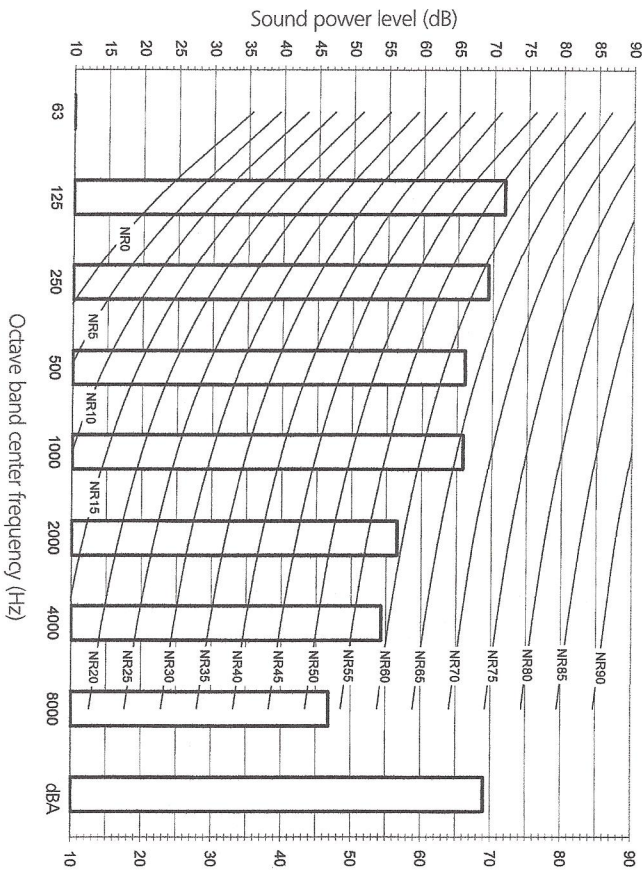


NOTES

- 1 dB(A) = A-weighted sound power level (A-scale according to IEC)
- 2 Reference acoustic intensity $0 \text{ dB} = 10\text{-}6 \mu\text{W/m}^2$
- 3 Measured according ISO3744

3TW30467-3

RZQSG100L8V1



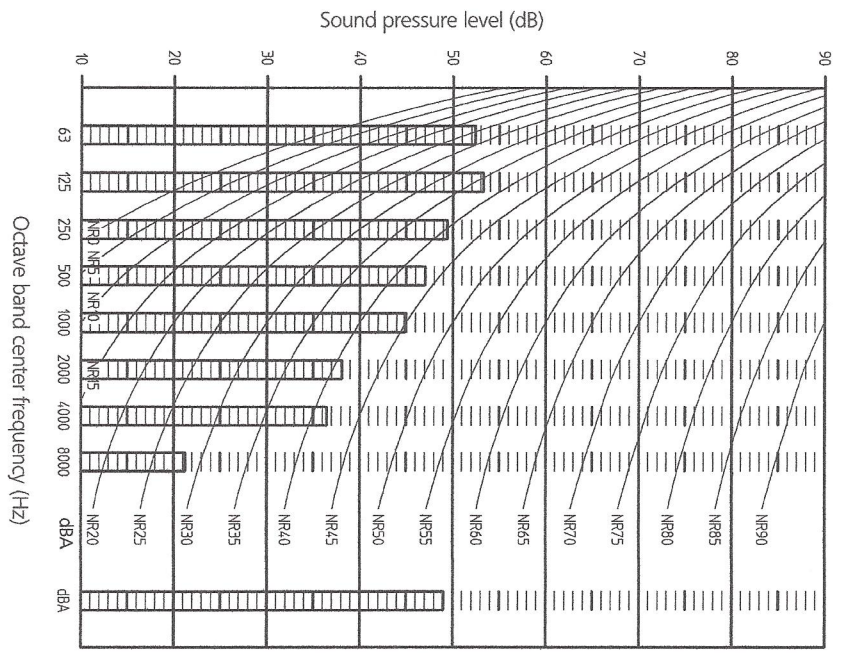
NOTES

- 1 dBA = A-weighted sound power level (A-scale according to IEC)
- 2 Reference acoustic intensity $0 \text{ dB} = 10\text{-}6 \mu\text{W/m}^2$
- 3 Measured according to ISO 3744

3D076086

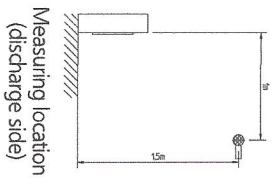
11 - 2 Sound Pressure Spectrum - Cooling

RZQSG71L3V1



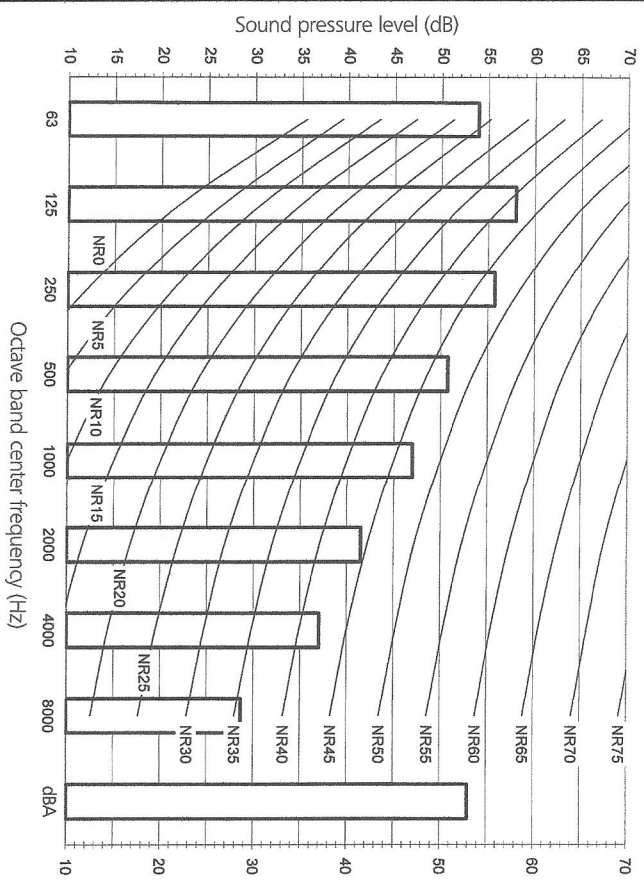
NOTES

- 1 Data is valid at free field condition
- 2 Data is valid at nominal operation condition
- 3 dBA = A-weighted sound pressure level (A-scale according to IEC)
- 4 Reference acoustic pressure 0dB = 20µPa



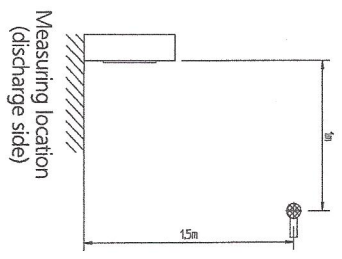
3TW30467-1

RZQSG100L8V1



NOTES

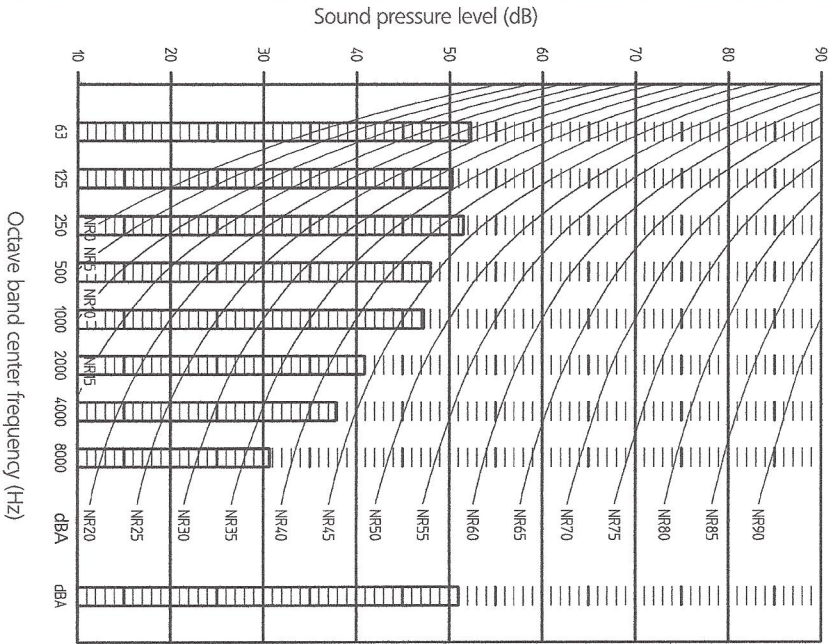
- 1 Data is valid at free field condition
- 2 Data is valid at nominal operation condition
- 3 dBA = A-weighted sound pressure level (A-scale according to IEC)
- 4 Reference acoustic pressure 0dB = 20µPa



3D076098

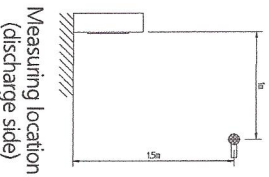
11 - 3 Sound Pressure Spectrum - Heating

RZQSG71L3V1



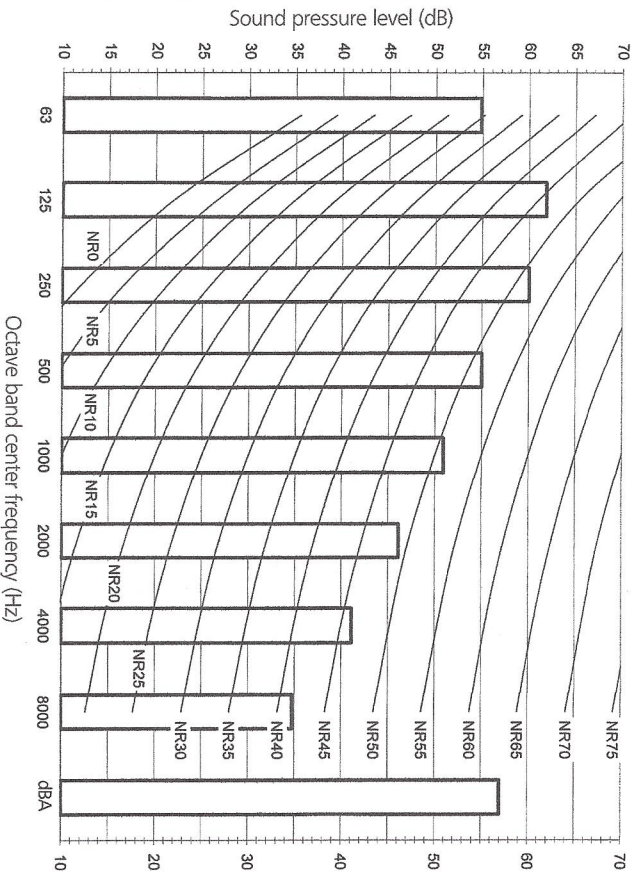
NOTES

- 1 Data is valid at free field condition
- 2 Data is valid at nominal operation condition
- 3 dBA = A-weighted sound pressure level (A-scale according to IEC)
- 4 Reference acoustic pressure 0dB = 20μPa



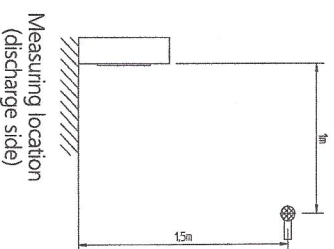
3TW30467-2

RZQSG100L8V1



NOTES

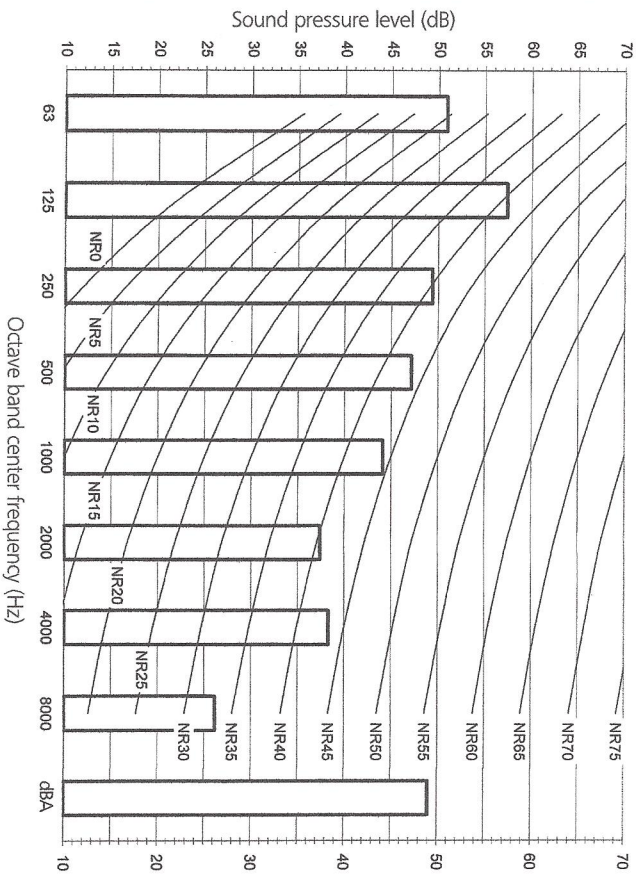
- 1 Data is valid at free field condition
- 2 Data is valid at nominal operation condition
- 3 dBA = A-weighted sound pressure level (A-scale according to IEC)
- 4 Reference acoustic pressure 0dB = 20μPa



3D076107

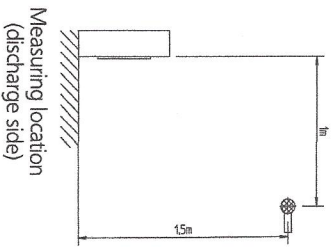
11 - 4 Sound Pressure Spectrum Quiet Mode

RZQSG100L8V1



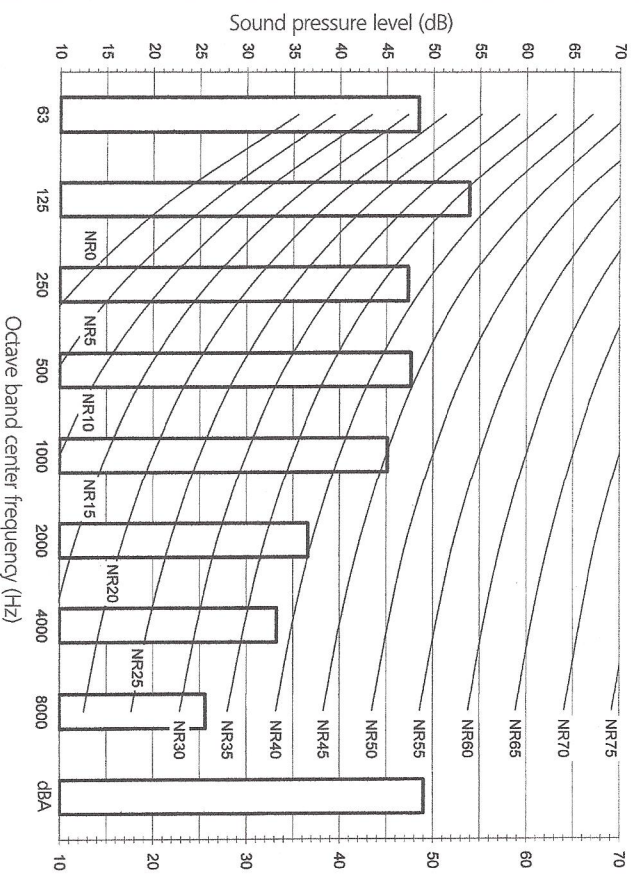
NOTES

- 1 Data is valid at free field condition
- 2 Data is valid at nominal operation condition
- 3 dBA = A-weighted sound pressure level (A-scale according to IEC)
- 4 Reference acoustic pressure 0dB = 20μPa



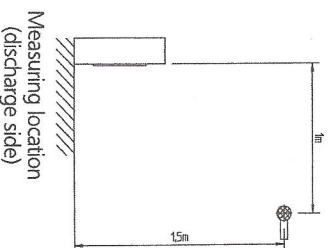
3D076097

RZQSG125L8V1



NOTES

- 1 Data is valid at free field condition
- 2 Data is valid at nominal operation condition
- 3 dBA = A-weighted sound pressure level (A-scale according to IEC)
- 4 Reference acoustic pressure 0dB = 20μPa



3D076099