

CLIENT:

The Co-operative Food

PROJECT TITLE:

The Co-operative Food - Cricklewood Broadway - NW2 3HD

REVISION HISTORY:

REV	R1	R2	R3		
DATE	02.06.15	22.09.15	23.09.15		
INITIALS	SB	SB	SB		
colours shown are purely representative, please match to colour references only !			NOTE: All dimensions are in millimetres u.s.o. and are approximate only.		



Sandfield Close
Moulton Park
Northampton
United Kingdom
NN3 6EU

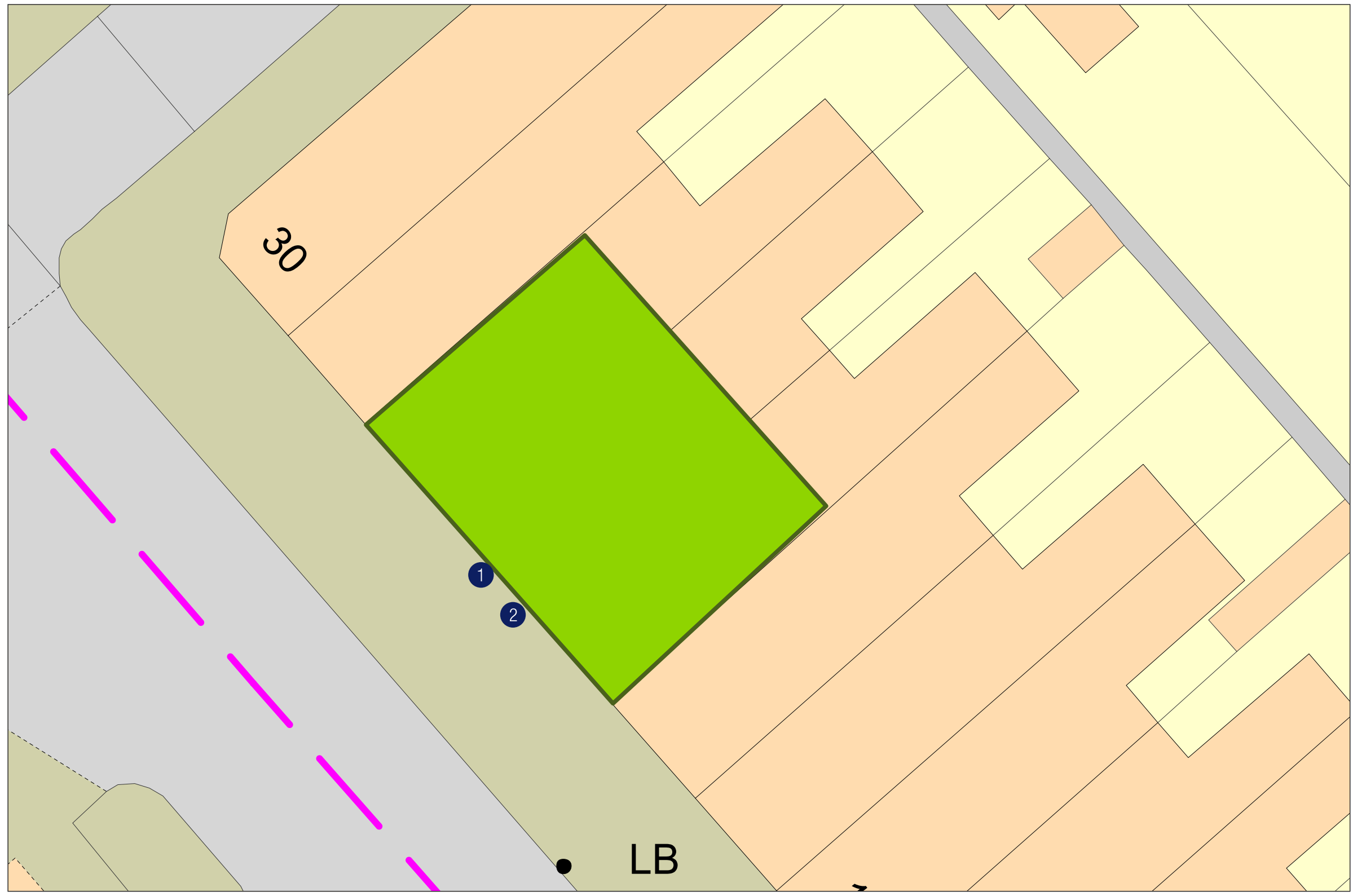
Tel: +44 (0)1604 790000
Fax: +44 (0)1604 790190
Email: info@hawes.co.uk
Web: www.hawes.co.uk

OPEN
HERE

Make a difference
Local donations since 1844
YOUR COMMUNITY
Make a difference
Become involved Your
Sharing our success Community
SHARING OUR SUCCESS
Your Community
For over 150 years
MAKE A DIFFERENCE
LOCAL DONATIONS

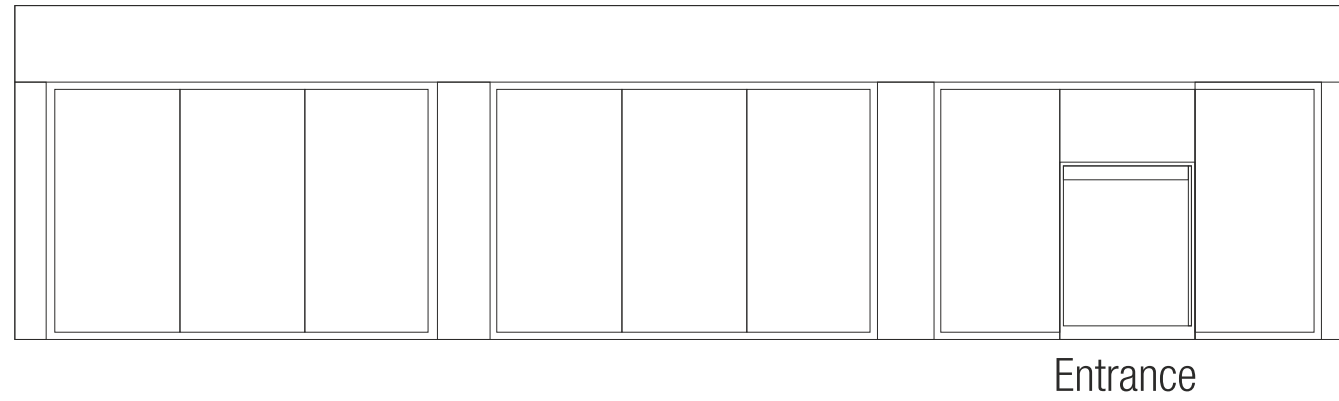


Site Plan

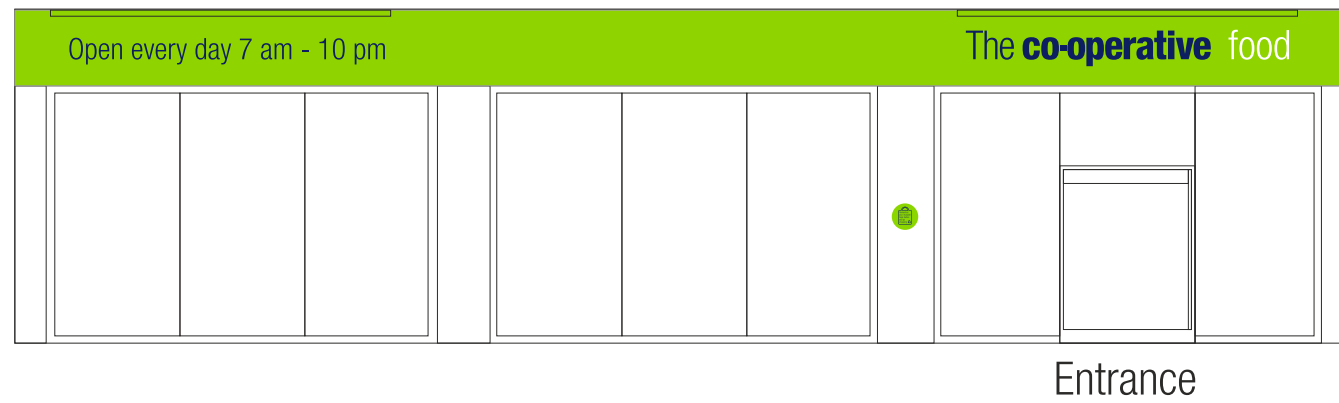


Elevations

Existing

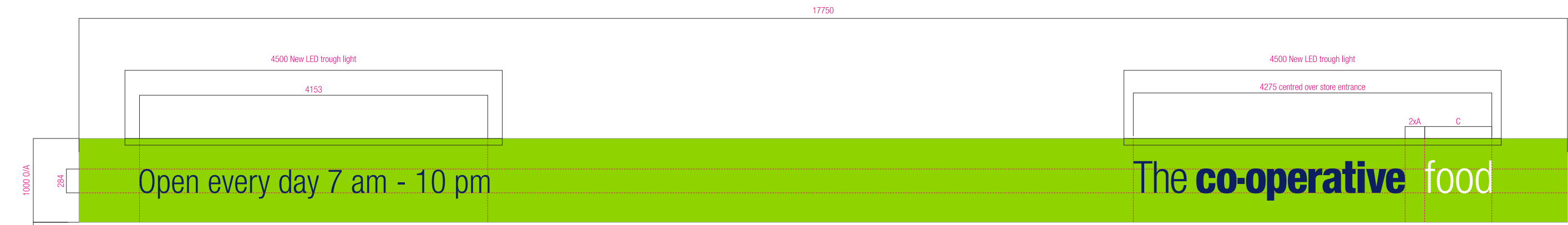


Proposed



Proposed Signage

- Paint (as supplied by paramount)
 - PMS 375c
 - PMS 2757c
 - PMS Process Black c
 - PMS 1235 c



- 3400 FFL
- 1 Gen 2 spec fascia - Externally illuminated (trough lit)
3mm ali fascia
Logo = acrylic letters pushed through 2mm with vinyl applied to face
Open hours = fret cut backed up acrylic letters with vinyl applied to face
Scale 1:50 @ A3
Part number: XXXxxxxx-xxxx
1 off



- Min 1400 - Max 1700
- 2 S/S Wall Mounted Car Park Sign
3mm ali panel,
painted green with applied vinyl deco.
Scale 1:10 @ A3
Part number: COP410027-0001
1 off

Scale 1:20 @ A3 Trough light 267 cd/M²

Fascia Profile

