

# WEST LEIGH

HEAD OFFICE:  
WEST LEIGH LIMITED  
11-13 Spa Road, London, SE16 3RB  
Telephone: 020-7232-0030  
Facsimile: 020-7232-1763  
Web: www.west-leigh.co.uk  
email: info@west-leigh.co.uk



## SPECIFICATION

CONSTRUCTION	W30 Steel Sections
MATERIAL	Mild steel
FIXING BY	West Leigh Limited
GLASS BY	West Leigh Limited
GLAZING BY	West Leigh Limited
FIXING HOLES	Standard CSK
GLAZING BEADS	W30 All Clip on Beads, EXTERNAL
GLAZE	18mm Double Glazed Units
EXT. MASTIC BY	West Leigh Limited, Arbosil LM White
INT. MASTIC BY	Others, Arbosil 1096 Silicone recommended
FINISH	Hot Dipped Galvanised & Polyester Powder Coated, RAL 9010 White Matt

## FITTINGS

SEE DRAWING CD.2776-01

## GLAZING NOTES

SEE DRAWING CD.2776-01

Please note that permissible bead tolerances of up to 2mm may occur as part of the standard manufacturing tolerances.

## AMENDMENTS

- A 18.08.15 Notes added
- B 02.09.15 Glazing bar detail amended

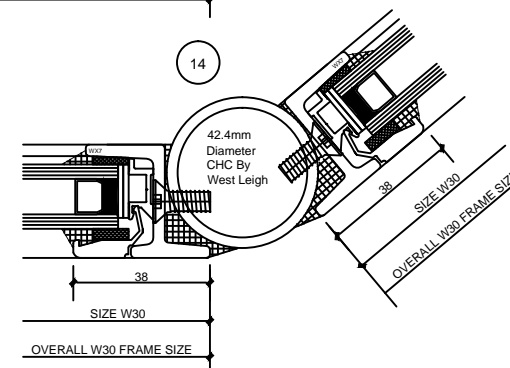
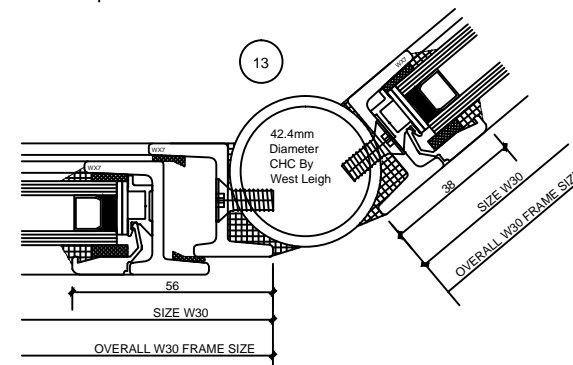
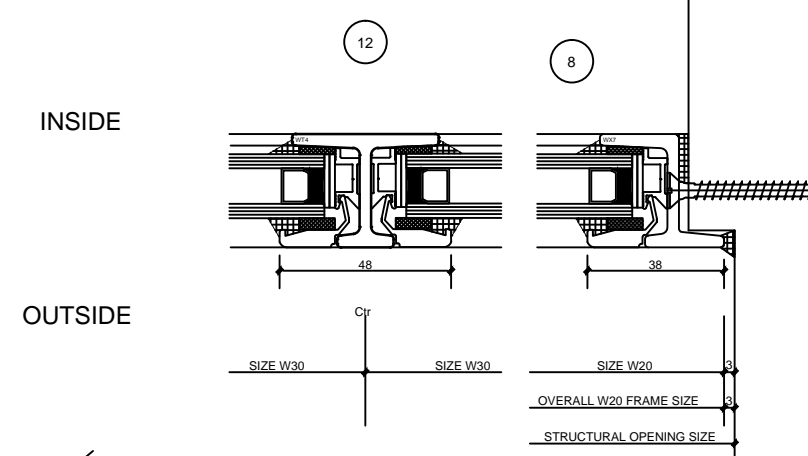
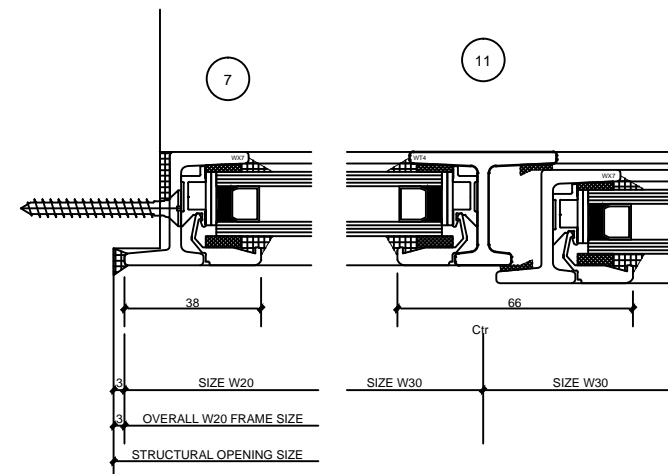
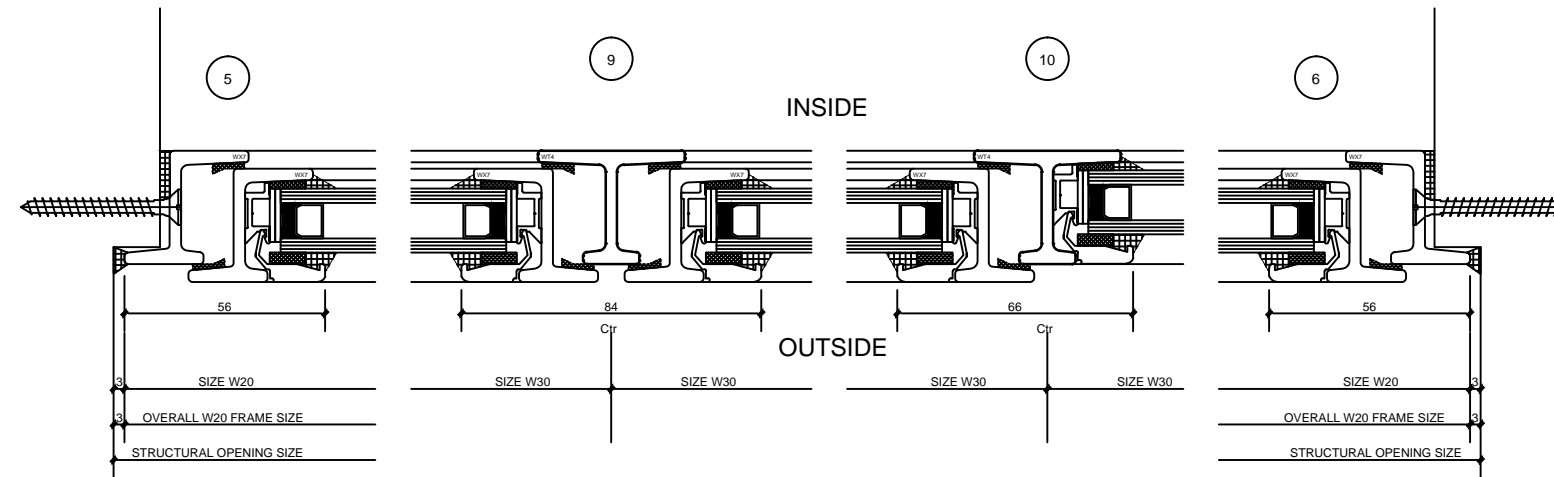
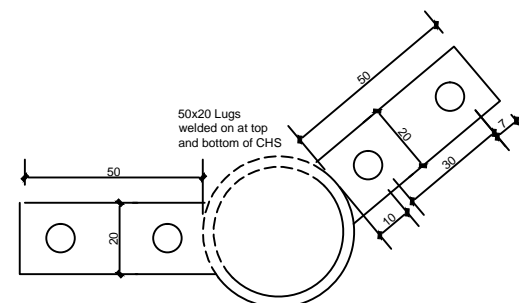
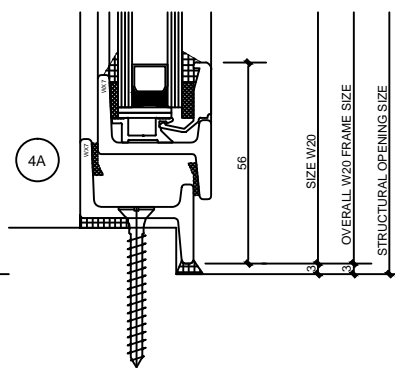
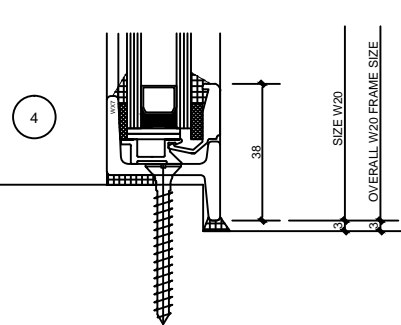
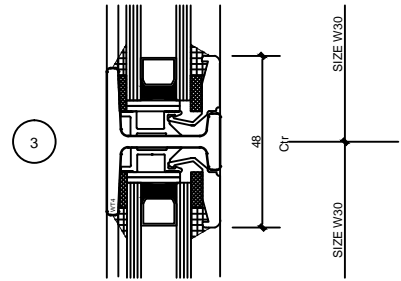
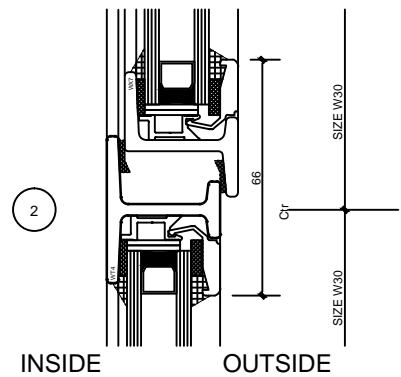
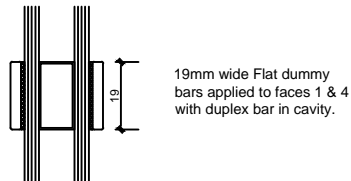
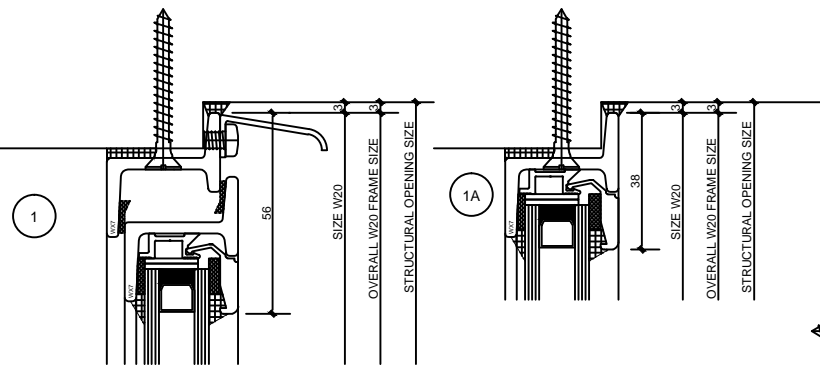
CONTRACTS NO. F.12776

WORKS NO. P.2776

SITE  
FLAT 13  
BRACKNELL GATE  
FROGNAL LANE  
LONDON, NW3 7EA

TITLE OF DRAWING  
PROPOSED FULL SIZE DETAILS OF  
REPLACEMENT W30 STEEL  
WINDOWS

SCALE	1:1 @A1	DRAWN	05.08.15	DE
DRAWING NO.	CD.2776-02	CHECKED	-	-
		REVISION	B	STATUS
				FOR CONSTRUCTION



THIS DRAWING IS TO BE READ IN CONJUNCTION WITH DRAWING Nos. CD.2776-01

© This drawing is the property of WEST LEIGH Ltd. It is a confidential document and must not be copied, used or its contents divulged without prior written consent.

FIGURED DIMENSIONS PREFERRED TO THOSE SCALED

All details are subject to change dependent on site conditions.