

Document name: **328CITE/HA CON8**

Submission date: **18/09/2015**

(W) Hard landscaping ..... page 01

(X) Soft landscaping ..... page 02

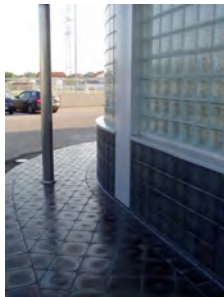
(Y) Earthworks ..... page 03

(Z) Fences ..... page 04

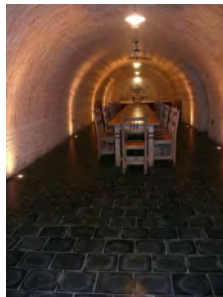
(W) HARD LANDSCAPING

(W1) **BASALT** as indicated in the *Design and Access Statement* by *Dmfk* submitted in the Approved Application 2014/2833/P

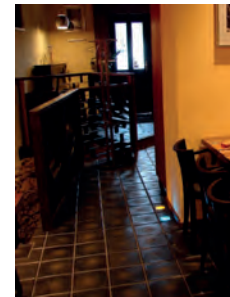
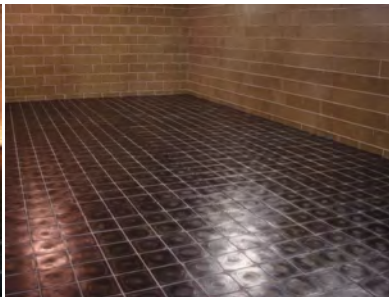
Company:  (see real sample)



Nika tiles



Cellar Winery Stanislav Mádl, Velké Bílovice (Velké Bílovice, Czech Republic)



Nika tiles 250



Bredovsky dvur (Praha, Czech Republic)

(W2) **RESIN BONDED SURFACES** as indicated in the *Design and Access Statement* by *Dmfk* in the Approved Application 2014/2833/P

Company: 



Ronacrete example 1



Community Hospital (Cockermouth, England)



Queen's walk (London, England)

Colour/ texture: **Chinese bauxite 0.9-1.4mm**

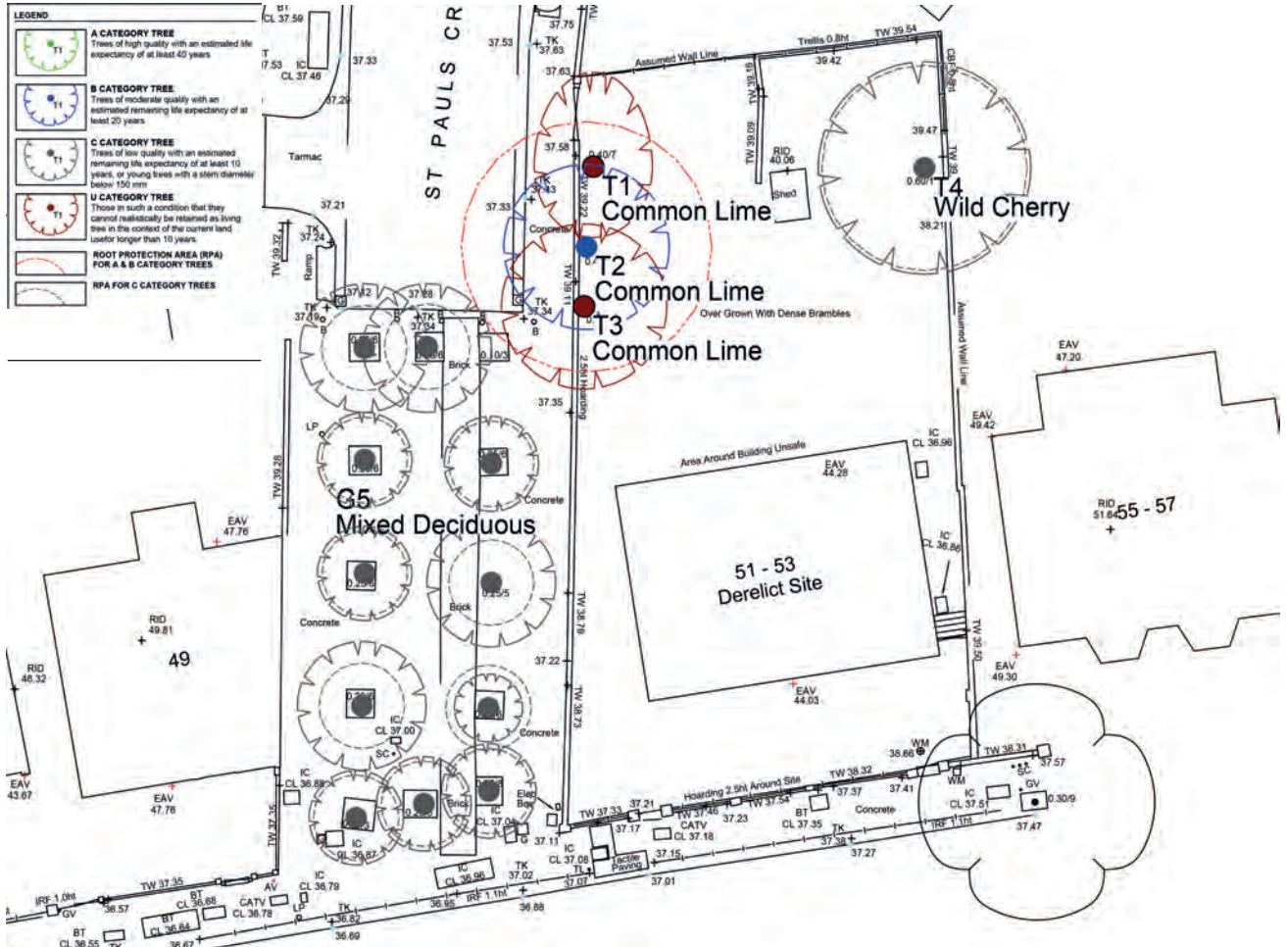


Chinese bauxite 0.9-1.4mm (see real sample)

NOTE: See PANEL1 of Condition 8 for location on the ground floor plan for this project.

(X) SOFT LANDSCAPING

Existing trees in the area and their categories



As recommended in the Tree Report by ACD Arboriculture Ref PRI18839tr -submitted in the Approved Application 2014/2833/P- we will remove T1, T2, T3 and T4 between September and February inclusive -as required in Condition 11-

As indicated in the Design and Access Statement by Dmfk submitted in the Approved Application 2014/2833/P, the current damaged trees are to be replaced with new mature specimens as follows:

(X1) Pyrus Calleryana Tree



(X2) Pyrus Communis Tree



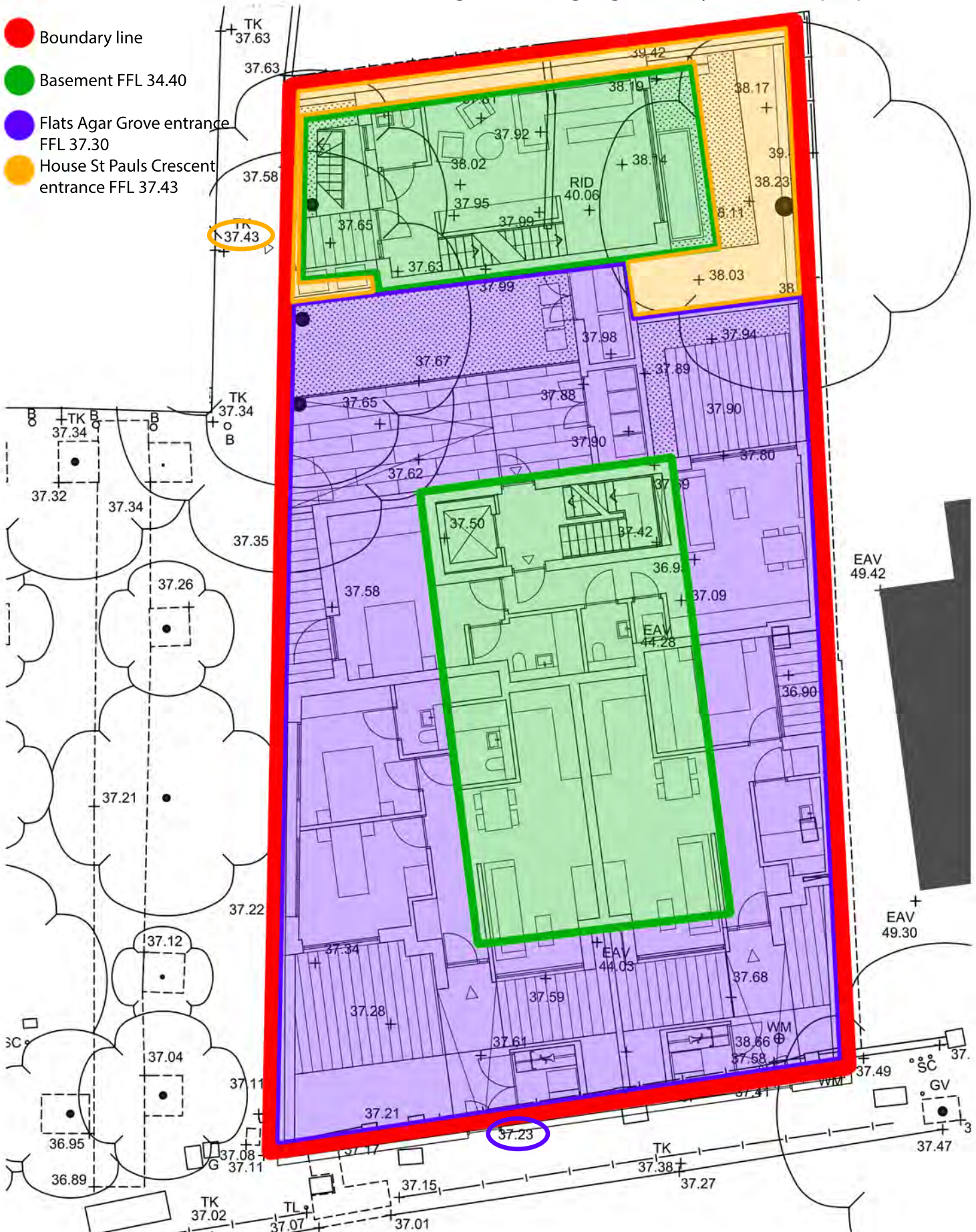
(X3) Ivy wall



NOTE: See PANEL 1 of Condition 8 for location on the ground floor plan and PANEL 2 of Condition 3 for location on the elvation for this project.

(Y) **EARTHWORKS:** **excavate** basement (highlighted in green) and **grading** the site as indicated on the drawing below (highlighted in yellow and purple).

- Boundary line
- Basement FFL 34.40
- Flats Agar Grove entrance FFL 37.30
- House St Pauls Crescent entrance FFL 37.43



(Z) FENCES : detail shown on Condition 3 document, page 06.