

T1 – Enhancements as set out in Waterman's ecology report

Bird Boxes

Bat Boxes

Black Redstart Habitat

Spider, Bee Hotels &

Wildlife Paving Stone

Sparrow Terraces

- The house sparrow is a Camden LBAP species and therefore it is recommended that boxes specifically designed for this species such as the Schwegler 1SP are erected onto the buildings to provide nesting opportunities. Ideally place the terrace two metres or more above the ground.



External dimensions:

height 24.5 x width 43 x depth 20 cm, weight (15kg)

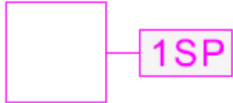
Sparrow Terraces Positions – West and East Podium



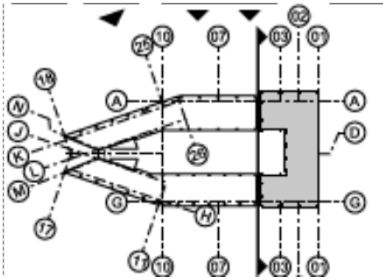
4No in total dual side of tower

1SP

1SP



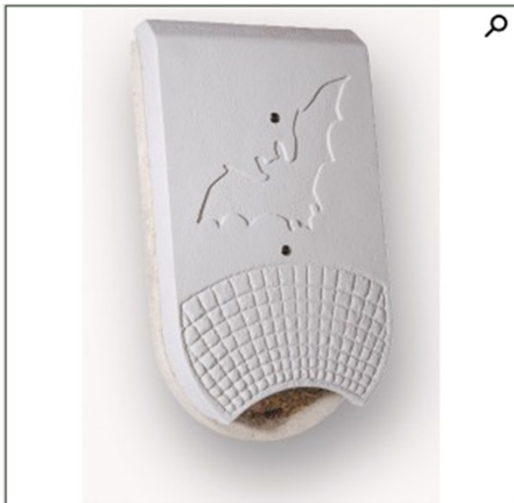
Bird Box (Sparrow)
 : Schwegler 1SP (OEA) sparrow terrace bird box, wall mounted
 ext dlms: 245(h) x 430(w) x 200(d)mm
 Colour: colour to match adjacent external wall cladding.



Podium Tower : Levels 9-14
 Extract Weedons DWR- A1324 Rev -B

Bat Boxes

- The Site is considered to have negligible potential to support roosting bats. As such, to provide Bat boxes (e.g. Schwegler 1FQ bat boxes / 1FR bat tubes or similar in line with the Camden BAP) should be incorporated in buildings, facing southeast, south, southwest



Schwegler Bat Box 1FQ
External dimensions:
height 60 x width 35 x depth 9 cm,
weight (15.8 kg)



Schwegler 1FR Bat Tube
Dimensions: H 475 x W 200 x D 125 mm
Entrance W 150 x D 20mm Weight: 9.5kg



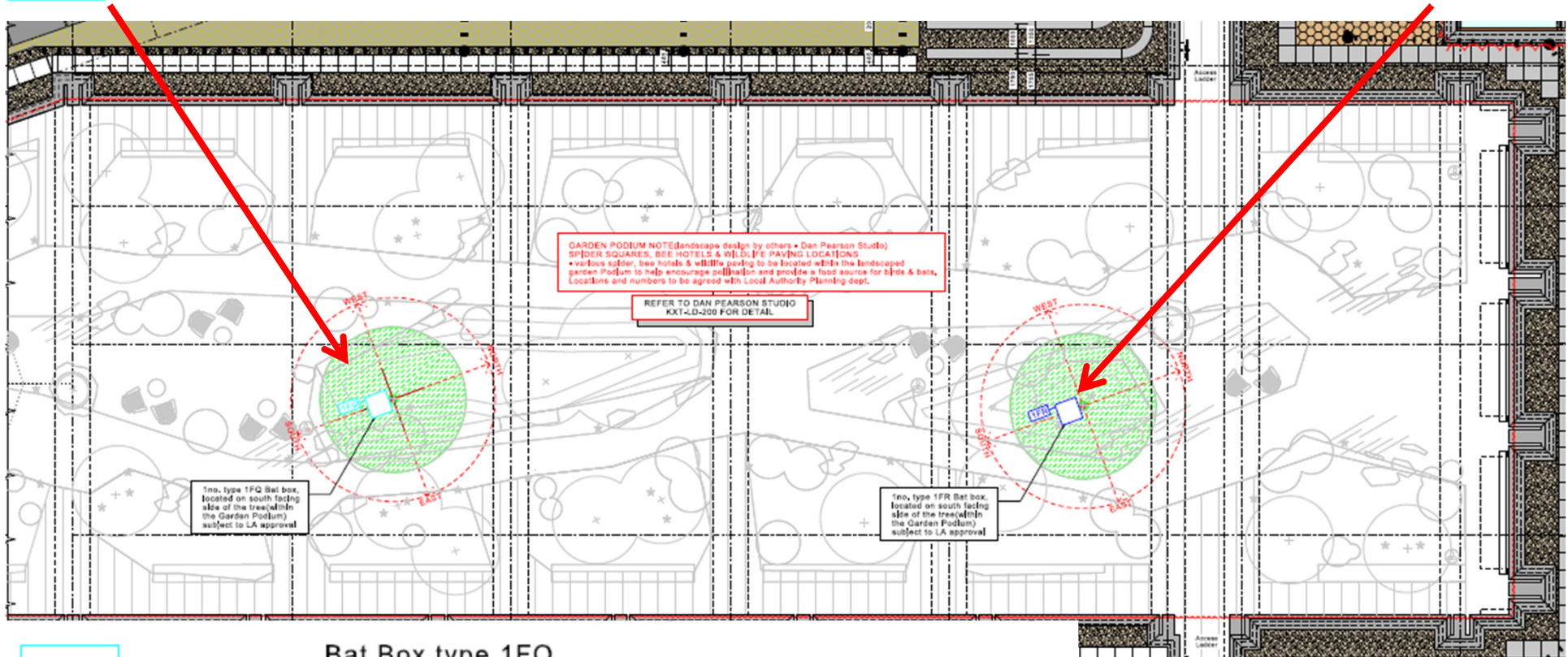
Bat Boxes Positions – Podium Slab

1FQ

1No 1FR Bat box affixed to central Persian ironwood tree, south facing

1No 1FQ Bat box affixed to central Persian ironwood tree, south facing

1FR



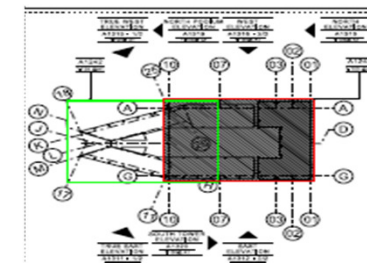
1FQ

Bat Box type 1FQ
Schwegler Bat Box 1FQ (OEA), wall mounted
ext dims: 475(h) x 200(w) x 125(d)mm
Colour: colour to match adjacent external wall cladding.



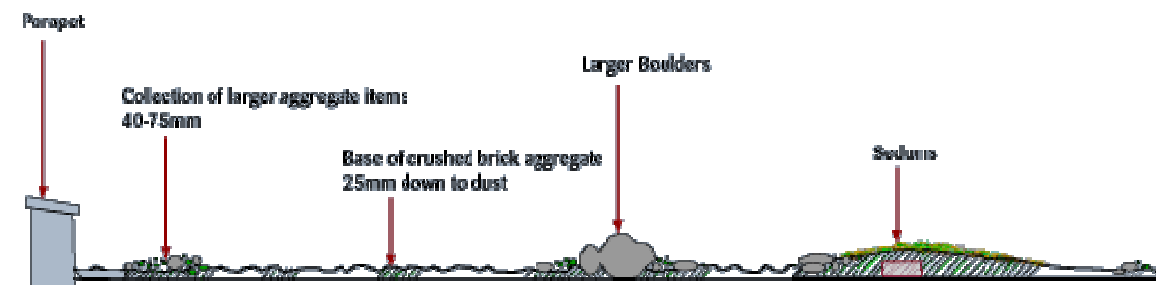
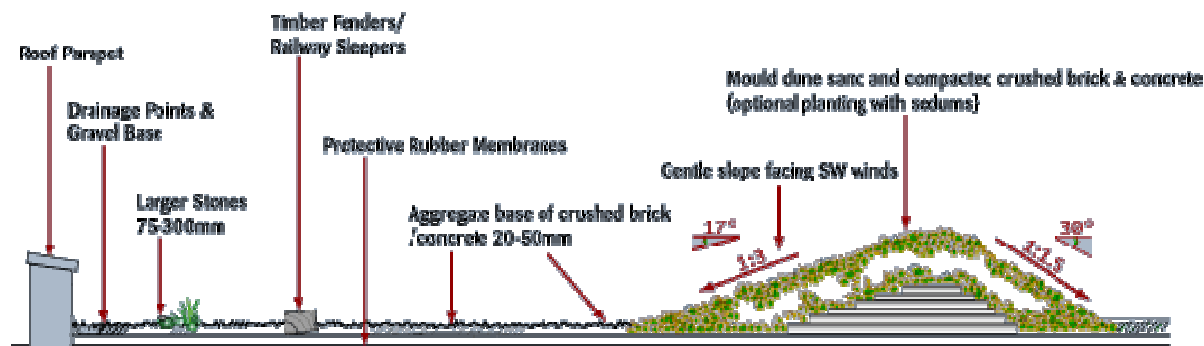
1FR

Bat Box type 1FR
Schwegler 1FR (OEA) bat tube, wall mounted
ext dims: 475(h) x 200(w) x 125(d)mm
Colour: colour to match adjacent external wall cladding.

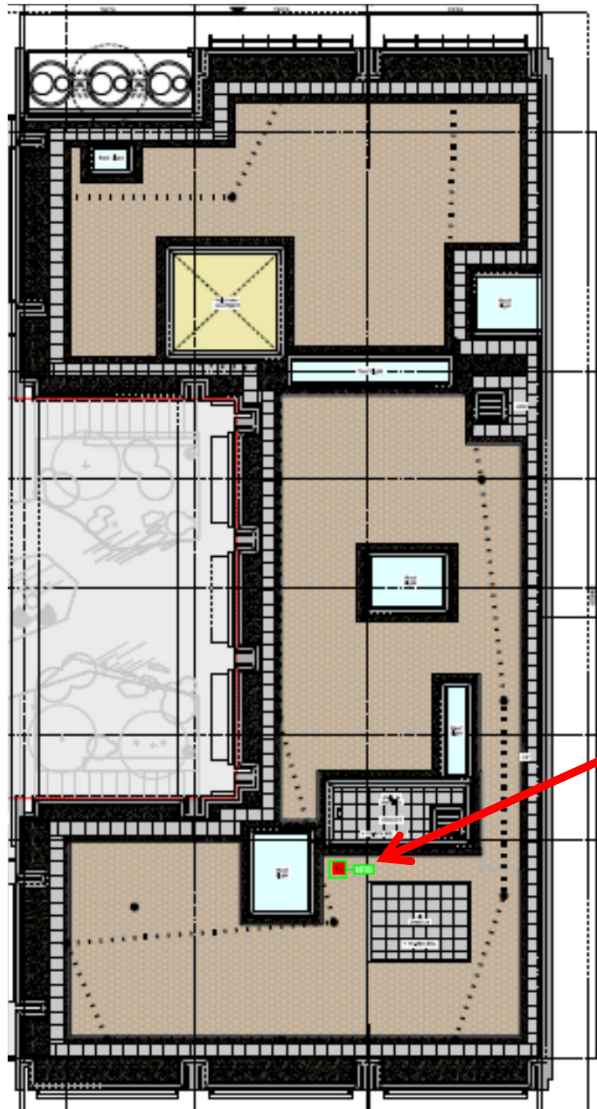


Black Redstart

- Given the proposed brown roof area, it is recommended that open fronted boxes specifically designed for black redstarts (a London BAP priority species) should be located appropriately throughout the development to provide nesting opportunities. Be based on aggregate mix present on the original site. In general in London this would necessitate the use of a mixture of crushed brick and concrete graded from 25mm to dust.



Black Redstart Position –Podium Roof



1No Black Redstart
Habitat

1BR

Black Redstart Habitat type 1BR
Proprietary open fronted box specifically designed for Black Redstarts - a London BAP priority) species to be located within the proposed brown roof area(Aggregate mix based on original site. Generally in London, this would necessitate the use of a mixture of crushed brick and concrete graded from 25mm to dust.)

Extract Weedons Roof Plan GA – DWR A1248 Rev -

Spider, Bee Hotels & Wildlife Paving



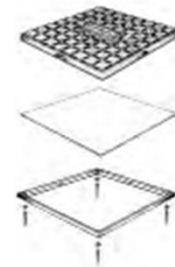
Spider Squares: A wooden square frame that attracts spiders. It has a weather proof corner 'a retreat' to help protect the spider.

Position approx. 20cm above the ground on the edges of beds, shrubs, bushes or close to buildings.

Dimensions: H 35 x W 33 x D 2cm, plus peg 30cm

Wildlife Paving Stone: A 'useful creatures' observation home. Occupants can include; ants, snails, woodlice, centipedes, beetles, earwigs & spiders

Dimensions: 40 x 40 x 5 cm



Chapelwood Rustic FSC Bee Box

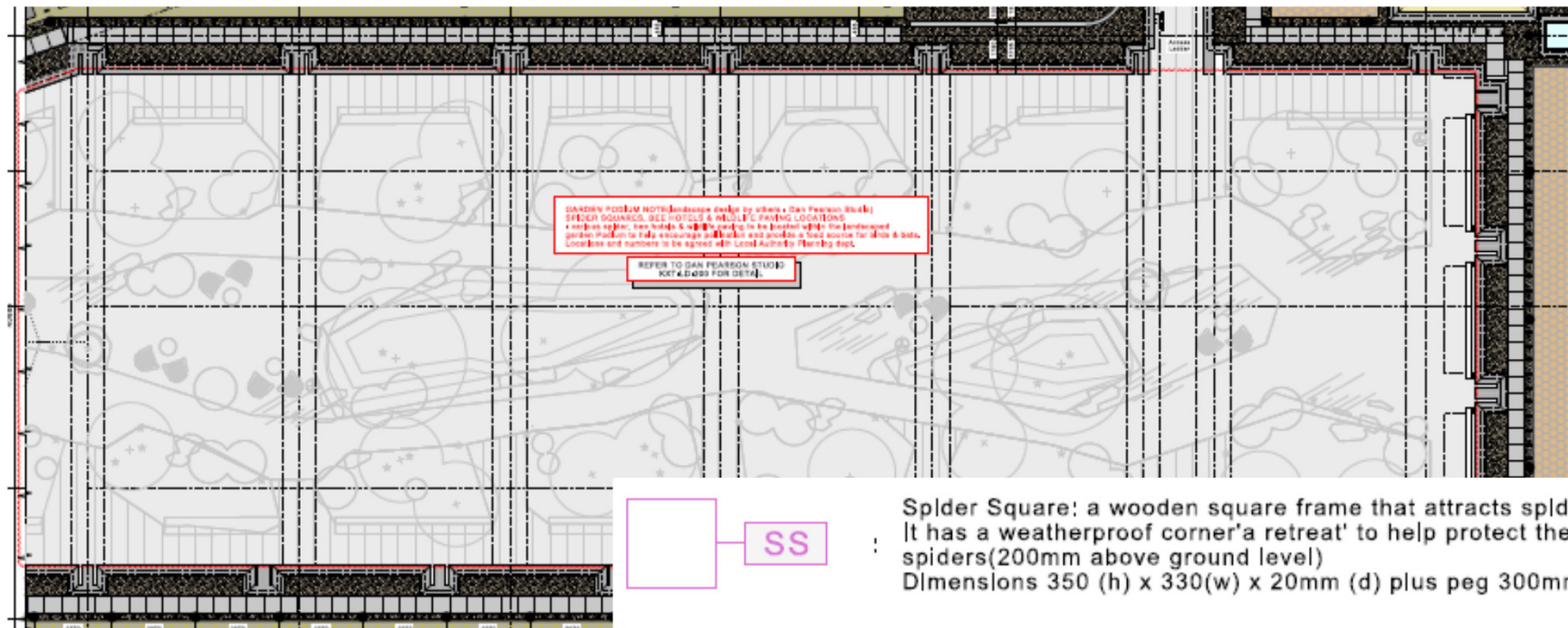


Bee Hotel: A safe bee habitat for masonry and leaf cutter bees. These bees do not swarm. Other inhabitants can include ladybirds.

Dimensions: 16 x 18 x 24 cm

Spider, Bee Hotels & Wildlife Paving Positions – Podium Garden

Various in and around the Garden Podium to help encourage pollination and provide a food source for the birds & bats



SS : Spider Square: a wooden square frame that attracts spider. It has a weatherproof corner 'retreat' to help protect the spiders (200mm above ground level)
Dimensions 350 (h) x 330(w) x 20mm (d) plus peg 300mm.



WPS : Wildlife Paving Stone: a 'useful creatures' observation home. Occupants can include ants, snails, woodlice, centipedes, beetles, earwigs & spiders
Dimensions 400(l) x 400(w) x 50(d) mm



BH : Bee Hotel: a safe bee habitat for masonry & leaf cutter bees. These bees do not swarm,
Other inhabitants can include ladybirds
Dimensions 160(l) x 180(w) x 24(d) mm



Extract Weedons Roof
Plan GA – DWR A1248
Rev -