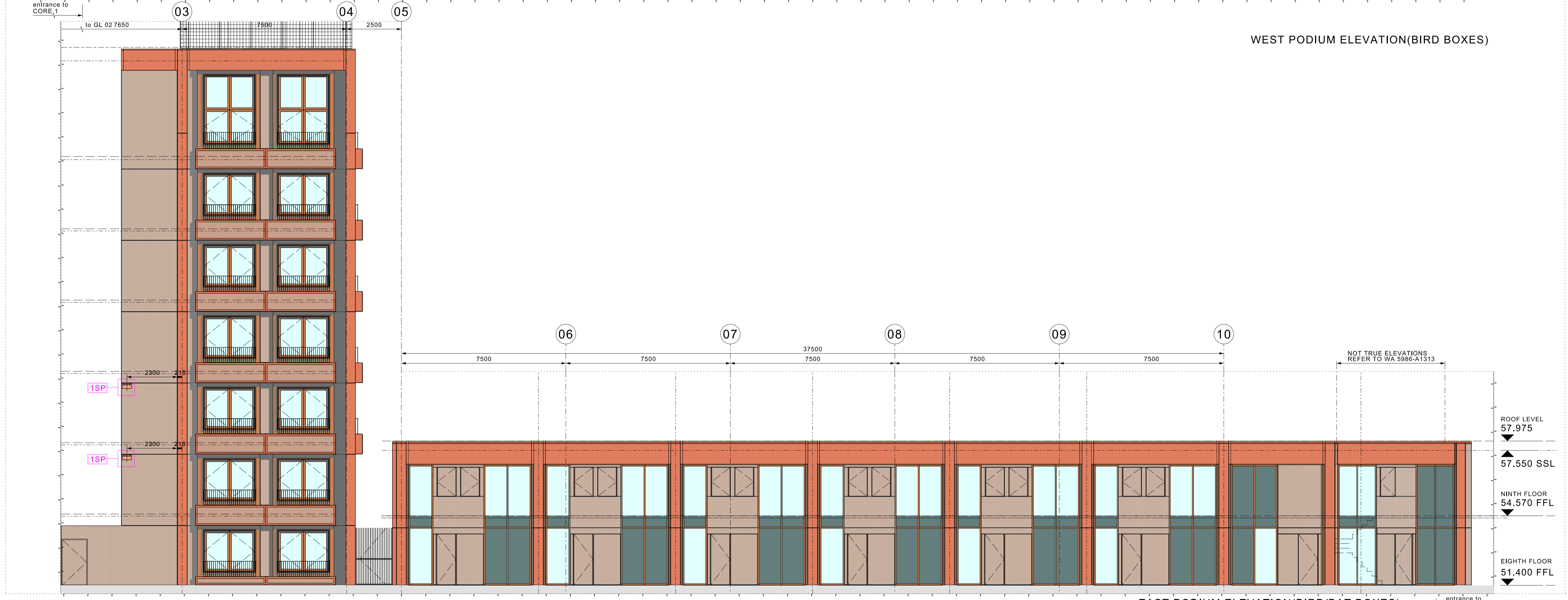


A1



WEST PODIUM ELEVATION(BIRD BOXES)

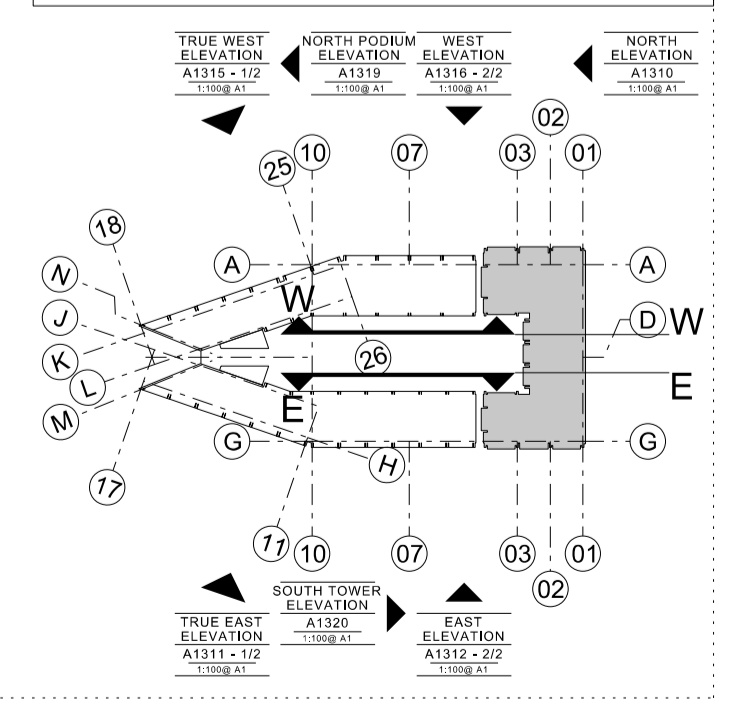


EAST PODIUM ELEVATION(BIRD/BAT BOXES)

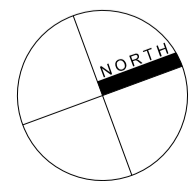
Copyright of this drawing is vested in the Architect and it shall not be copied or reproduced without consent. Figures and dimensions are to be taken from this drawing. All contractors must visit the site and be responsible for taking and checking all dimensions relative to their work. Weedon Architects to be advised of any variation between drawings and site conditions. DO NOT SCALE OFF THIS DRAWING. IF IN DOUBT ASK

ECOLOGY ENHANCEMENTS KEY	
	Bird Box (Sparrow) Schwager 1SP (SEA) sparrow terrace bird box, wall mounted ext dims: 245(h) x 430(w) x 200(d)mm Colour: colour to match adjacent external wall cladding.
	Bat Box type 1FR Schwager 1FR (SEA) bat tube, located on tree - south facing ext dims: 475(h) x 200(w) x 125(d)mm Colour: colour to match tree trunk
	Bat Box type 1FQ Schwager Bat Box 1FQ (SEA), located on tree - south facing ext dims: 475(h) x 200(w) x 125(d)mm Colour: colour to match tree trunk.
	Black Redstart Habitat type 1BR Proprietary open fronted box specifically designed for Black Redstarts - a London BAP priority species to be located within the proposed brown roof area/Aggregate mix based on original site. Generally in London, this would necessitate the use of a mixture of crushed brick and concrete graded from 25mm to dust.
	Silver Square Silver Square is a wooden square frame that attracts spider. It has a weatherproof corner's 'retreat' to help protect the spiders (200mm above ground level) Dimensions 350 (h) x 330(w) x 20mm (d) plus peg 300mm.
	Wildlife Paving Stone Wildlife Paving Stone: a 'useful creatures' observation home. Occupants can include ants, snails, woodlice, centipedes, beetles, crickets & spiders Dimensions 400(h) x 400(w) x 50(d) mm
	Bee Hotel Bee Hotel: a safe bee habitat for masonry & leaf cutter bees. These bees do not swarm. Other inhabitants can include ladybirds Dimensions 150(h) x 150(w) x 240(d) mm

NOTE:
1) Drawing to be read in conjunction with Waterman's Ecology Report (Ecology enhancements) for Building T1.



Rev	Drawn	Date	Comment
A	RJ	17.07.15	ISSUED FOR PLANNING(discharge of Planning Condition 26)
B	RJ	17.09.15	Bird box relocated as agreed by LA (email 28.06.15). Bat relocated to be mounted on Trees on roof garden podium level (south facing). Issued for Planning approval.



KINGS CROSS CENTRAL BUILDING T1
WEST & EAST PODIUM ELEVATIONS
ECOLOGY ENHANCEMENTS (BIRD/BAT BOXES)
Drawn RJ Date MAR 2015 PLANNING
Checked MD Scale 1:100 @ A1 15986 A1324-B