

Copyright of this drawing is vested in the Architect and it must not be copied or reproduced without consent. Figured dimensions only are to be taken from this drawing. All contractors must visit the site and be responsible for taking and checking all dimensions relative to their work. Weedon Architects to be advised of any variation between drawings and site conditions. **DO NOT SCALE OFF THIS DRAWING**

ECOLOGY ENHANCEMENTS KEY

- TSP** Bird Box (Sparrow)
- 1FR** Bat Box type 1FR
- 1FQ** Bat Box type 1FQ
- 1BR** Black Redstart Habitat type 1BR
- SS** Spider Square
- WPS** Wildlife Paving Stone
- BH** Bee Hotel

Blind Box (Sparrow) Schwinger TSP (OE) sparrow terrace blind box, wall mounted out dim: 245(h) x 430(w) x 200(d)mm Colour: colour to match adjacent external wall cladding.

Bat Box type 1FR Schwinger 1FR (OE) bat tube, located on tree - south facing out dim: 475(h) x 200(w) x 125(d)mm Colour: colour to match tree trunk

Bat Box type 1FQ Schwinger Bat Box 1FQ (OE), located on tree - south facing out dim: 475(h) x 200(w) x 125(d)mm Colour: colour to match tree trunk.

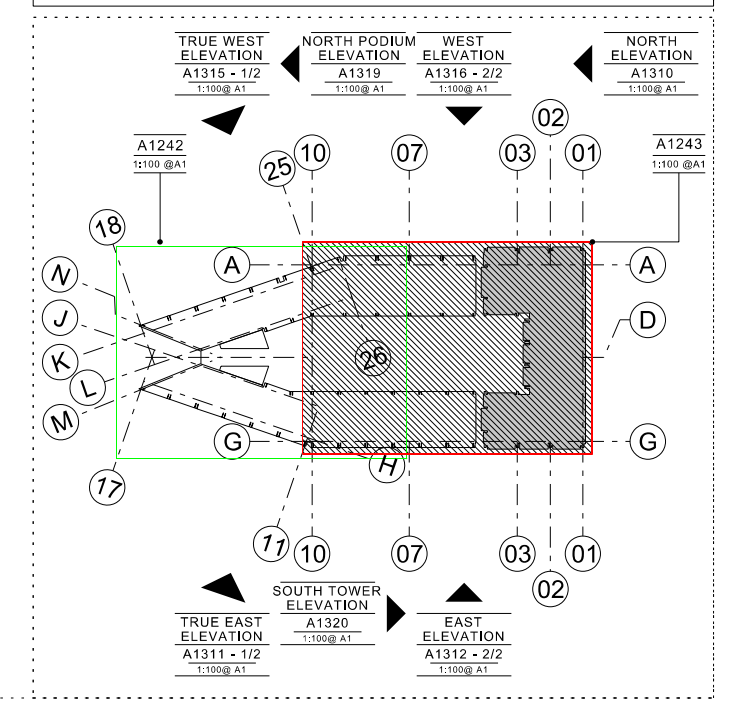
Black Redstart Habitat type 1BR Proprietary open framed box specifically designed for Black Redstarts - a London BAP priority species to be located within the proposed brown roof area/aggregate mix based on original site. Generally in London, this would necessitate the use of a mixture of crushed brick and concrete graded from 25mm to dust.

Spider Square: a wooden square frame that attracts spider. It has a weatherproof corner 'rotent' to help protect the spiders (200mm above ground level) Dimensions 350 (h) x 330(w) x 20mm (d) plus peg 300mm.

Wildlife Paving Stone: a 'useful creatures' observation home. Components can include ants, snails, woodlice, centipedes, beetles, crickets & spiders Dimensions 400(h) x 400(w) x 50(d) mm

Bee Hotel: a safe bee habitat for masonry & leaf cutter bees. These bees do not swarm. Other inhabitants can include ladybirds Dimensions 150(h) x 150(w) x 240(d) mm

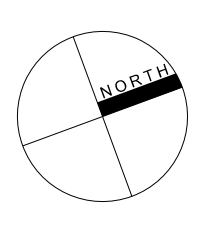
NOTE:
 1) Drawing to be read in conjunction with Waterman's Ecology Report (Ecology enhancements) for Building T1.



Rev Drawn Date Comment

A RJ 17.07.15 ISSUED FOR PLANNING (discharge of Planning Condition 26)

B RJ 17.09.15 Bat boxes relocated to be mounted on trees on roof garden podium level (south facing). Issued for Planning approval.



KINGS CROSS CENTRAL BUILDING T1 PART ROOF PLAN
 ECOLOGY ENHANCEMENTS (ROOF TOP/GARDEN PODIUM)
 Drawn RJ Date MAR 2015 PLANNING
 Checked MD Scale 1:100 @ A1 15986 A1248-B