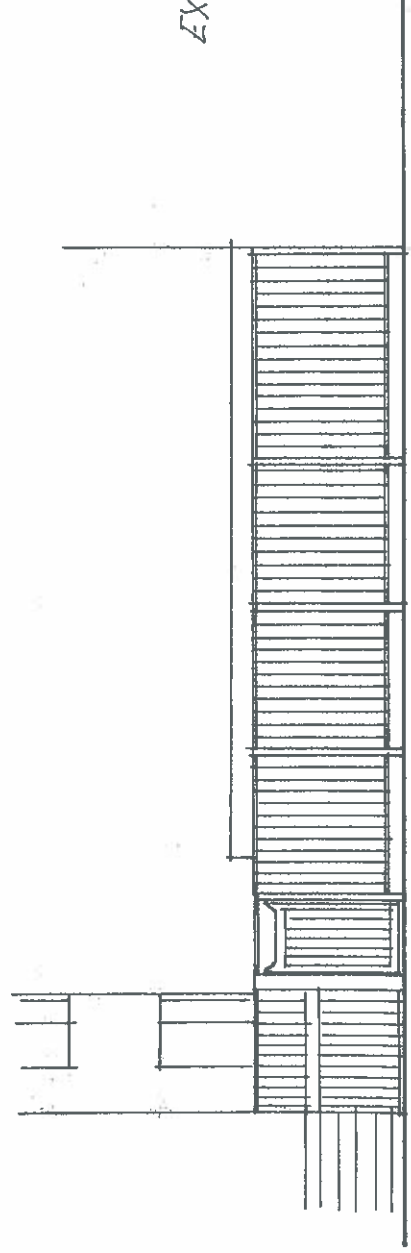


EXISTING STREET ELEVATION

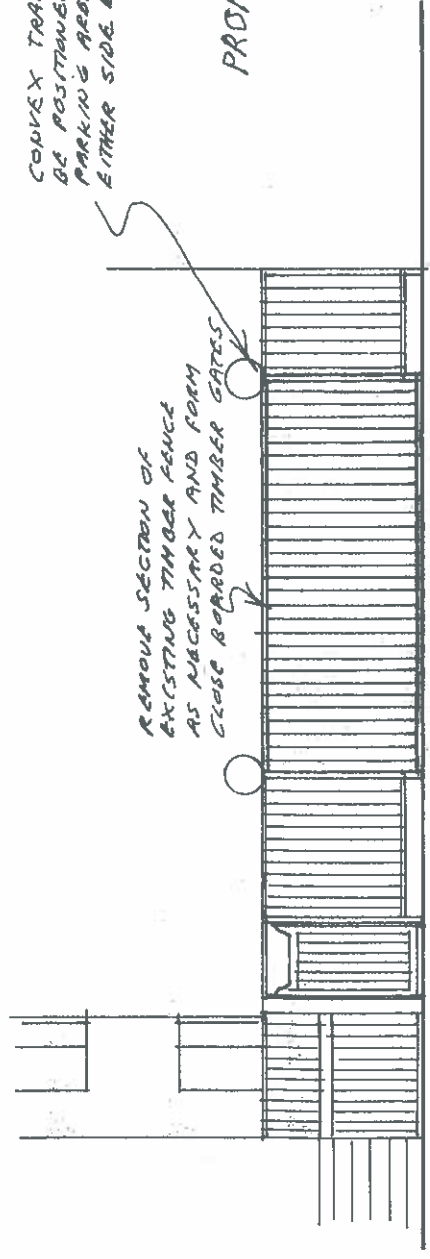
1:100



CONVEX TRAFFIC SAFETY MIRRORS (2 NO.) THESE TO BE POSITIONED 50 AS TO ENABLE CARS EXITING THE PARKING AREA TO SEE PEDESTRIANS APPROACHING ON EITHER SIDE BEFORE MOVING ONTO THE FOOTPATH.

PROPOSED STREET ELEVATION

1:100



REMOVE SECTION OF EXISTING TIMBER FENCE AS NECESSARY AND FORM CLOSE BOARDED TIMBER GATES.

N.B. GATES ARE TO BE KEPT IN CLOSED POSITION APART FROM ENTERING AND EXITING THE PARKING AREA - NOT TO BE OPERATED BY THE REMOTELY OPERATED MOTORIZED GATES.

R H Y L S T R A N

PARKING AREA IN BRICK PAVERS

REMOVE CONCRETE RAMP AND RELAY GARDEN TO FORM PARKING AREA

CROSSOVER (TO HIGHWAYS APPROACH AND REQUIREMENTS)

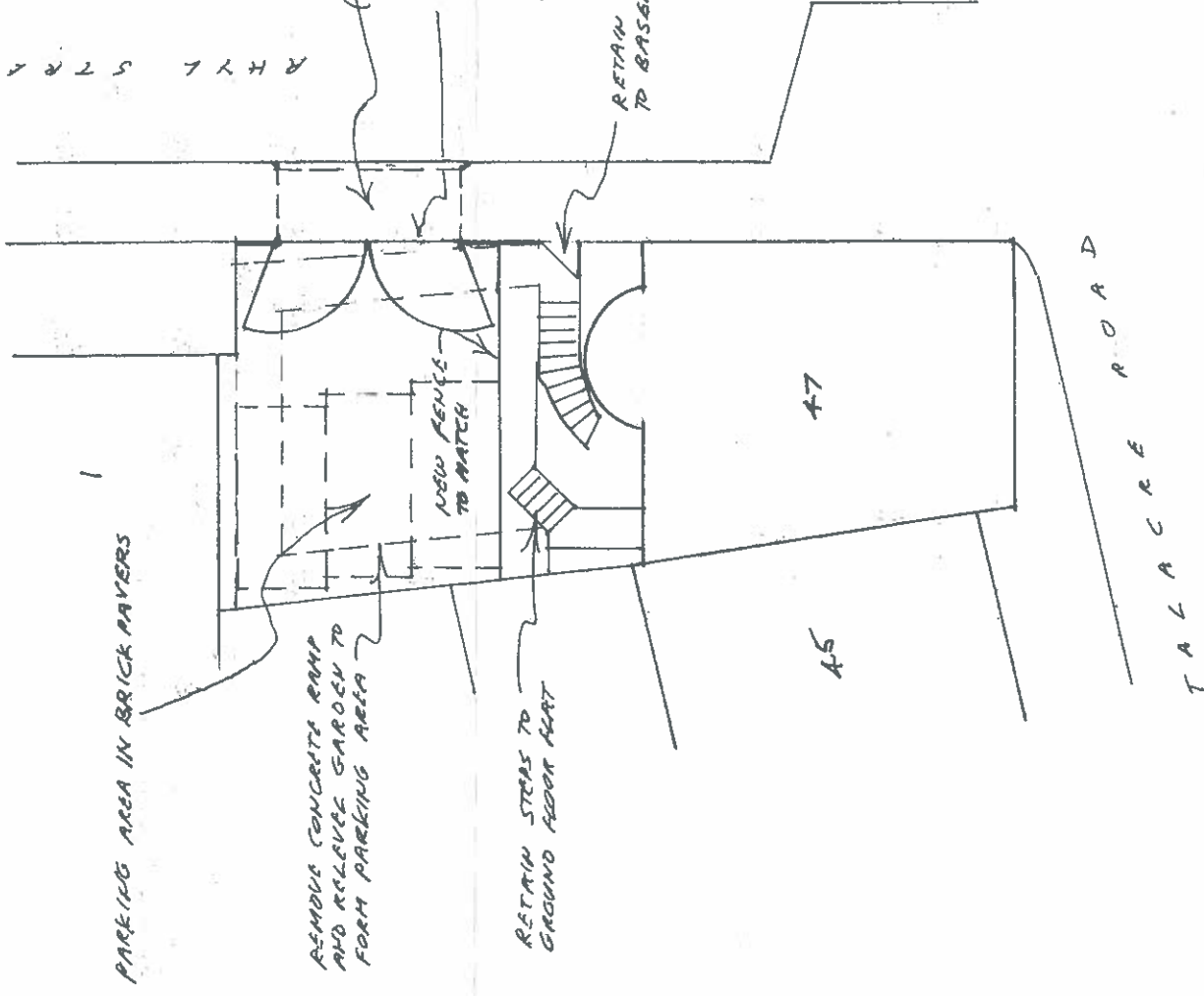
REMOVE SECTION OF EXISTING TIMBER FENCE AND FORM TIMBER GATES WITH CLOSE BOARDED MITSU IN STYLE TO MATCH. THESE TO HAVE MOTORIZED ELECTRIC DRIVERS WITH REMOTE OPERATORS.

RETAIN STEPS TO GROUND FLOOR FLAT

RETAIN GATE AND STRAITS TO BASEMENT FLAT

SITE PLAN

1:200



TALACRE ROAD

ALTERATIONS TO REAR GARDEN

AT, 47 TALACRE ROAD, NWS

FOR MR. P. KANNER 10/PKT-1 E

SCALES 1:100, 1:200 DATE 17/3/10

- A. AMENDED TO CLIENT'S REQUIREMENTS 25/3/10
- B. AMENDED TO PLANNING REQUIREMENTS 19/7/10
- C. AMENDED TO PLANNING AND HIGHWAYS REQUIREMENTS 20/9/10
- D. AMENDED TO PLANNING AND HIGHWAYS REQUIREMENTS 24/1/11
- E. AMENDED TO SITE VARIATIONS 24/8/15