

PLANT SCHEDULE (ADDITIONAL TO DAN PEARSON DRAWINGS)

Shrubs / Perennials	Size	Height/Spread @ Planting	Centres	Qty. No.
Dryopteris felix-mas	2L		500	24
Fragaria vesca	2L		400	13
Hedera helix 'Arborescens'	2L	40-60cm sev. shoots		120
Luzula sylvatica	2L		350	47
Sambucus nigra 'Lacinata'	3L	60-80cm branched	A/S	2
Sarcococca hookeriana var. humilis	2L	20-30cm	450	30
Vinca 'Gertrude Jekyll'	2L		400	94
Buxus sempervirens	12L	50cm diameter Bushy	A/S	8
Vinca 'Gertrude Jekyll'	2L		400	16

NOTE:
FOR PLANTERS 1 - 16 REFER TO DAN PEARSON SPECIFICATION AND DETAILS

DAN PEARSON (/ WILLERBY AVAILABLE) PLANT SCHEDULE:

Shrubs / Perennials	Size	Qty. No.	NOTE:
	(as offered by WLL)	(as VE - DPS comments)	
Fragaria vesca	2L	206	
Hedera arborea	2L	40	
Chasmanthium latifolium	1L	237	
Melica altissima 'alba'	2L	206	WLL offer Melica altissima 'Atropurpurea' - DPS to approve
Waldsteina temata	2L	103	

Armeria maritima	2L	CG	100	
Dianthus carthusianorum	2L		25	4no. to be used for planters 12, 15, 18, 21 as per plan layout
Nerine bowdenii	1L		30	
Sedum acre	1L		100	
Sedum bertam anderson	2L		50	
Sisyrinchium striatum	3L		25	4no. to be used for planters 12, 15, 18, 21 as per plan layout
Stipa lessingiana	3L		25	4no. to be used for planters 12, 15, 18, 21 as per plan layout
Verbena bonariensis 'Lollipop'	2L		25	4no. to be used for planters 12, 15, 18, 21 as per plan layout

Erigeron karvinskianus	2L	CG	60	
Lavandula x intermedia 'Edelweiss'	5L	CG	156	
Lavandula x intermedia 'Sussex'	5L	CG	156	WLL offer 'Twickel Purple', 'Munstead', 'Hidcote' or 'Vera' - DPS to confirm
Rosmarinus officinalis 'Severn Sea'	5L	CG	12	
Phillyrea angustifolia	10L	CG 0.8m high clipped ball	8	WLL offer 30L clipped balls at Kelways - DPS to approve
Phlomis 'Edward Bowles'	5L	CG	9	

Trees	Size	Qty. No.	NOTE:
	(as offered by WLL)	(as VE - DPS comments)	
Arbutus unedo	2.0m high	CG m/s	3
Ficus carica	1.5m high	CG m/s	2

Bulbs (Planter 2)	Qty. No.	NOTE:
	(as VE - DPS comments)	
Ipheion uniflorum 'White Star'		1000

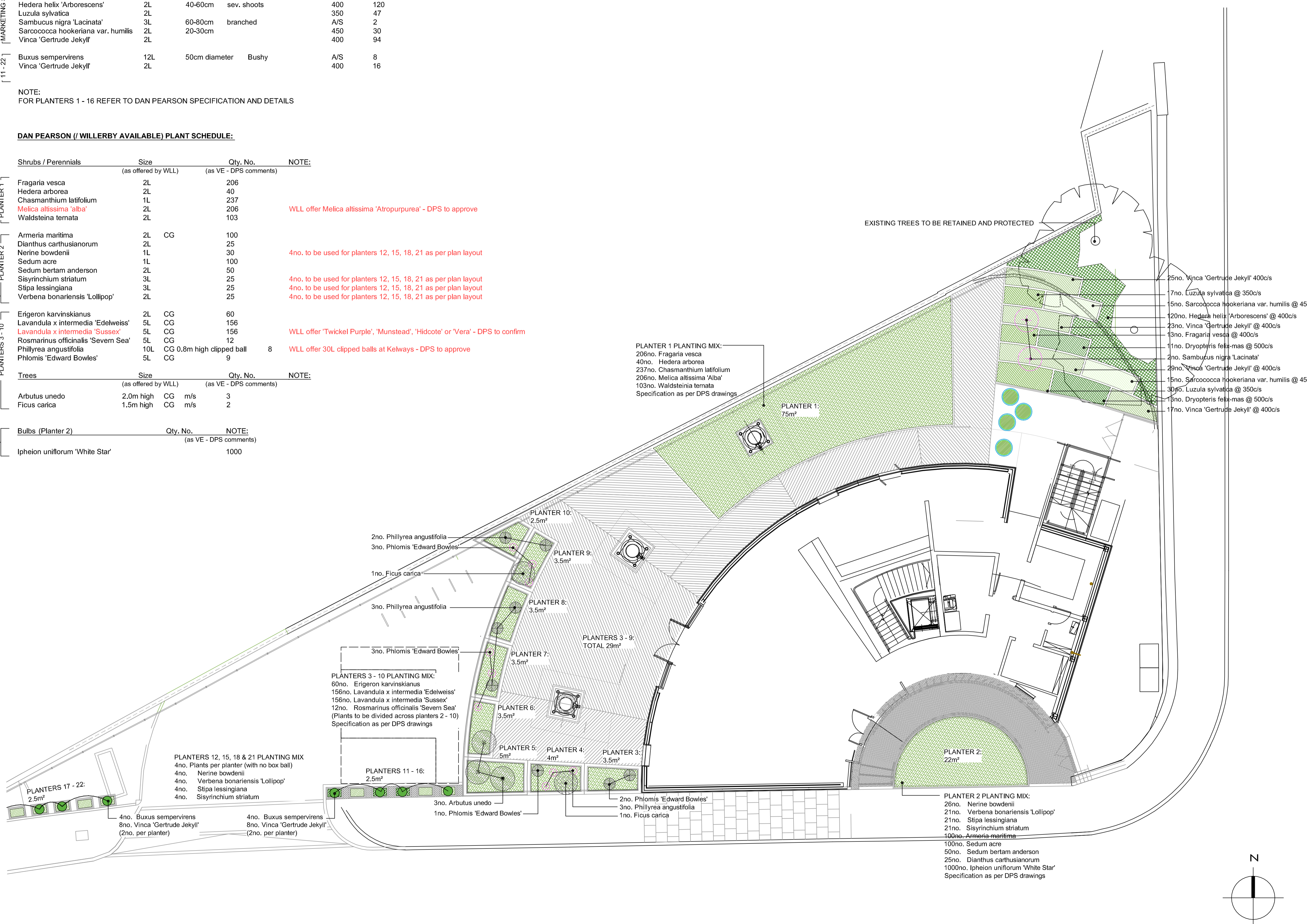
BACK OF MARKETING SUITE
PLANTERS 11-22

PLANTER 1

PLANTER 2

PLANTERS 3-10

Bulbs (Planter 2)



PLANTER 1 PLANTING MIX:
206no. Fragaria vesca
40no. Hedera arborea
237no. Chasmanthium latifolium
206no. Melica altissima 'Alba'
103no. Waldsteina temata
Specification as per DPS drawings

PLANTER 1:
75m²

PLANTER 10:
2.5m²

PLANTER 9:
3.5m²

PLANTER 8:
3.5m²

PLANTER 7:
3.5m²

PLANTER 6:
3.5m²

PLANTER 5:
5m²

PLANTER 4:
4m²

PLANTER 3:
3.5m²

PLANTERS 3 - 10 PLANTING MIX:
60no. Erigeron karvinskianus
156no. Lavandula x intermedia 'Edelweiss'
156no. Lavandula x intermedia 'Sussex'
12no. Rosmarinus officinalis 'Severn Sea'
(Plants to be divided across planters 2 - 10)
Specification as per DPS drawings

PLANTERS 12, 15, 18 & 21 PLANTING MIX
4no. Plants per planter (with no box ball)
4no. Nerine bowdenii
4no. Verbena bonariensis 'Lollipop'
4no. Stipa lessingiana
4no. Sisyrinchium striatum

PLANTERS 11 - 16:
2.5m²

PLANTERS 17 - 22:
2.5m²

4no. Buxus sempervirens
8no. Vinca 'Gertrude Jekyll'
(2no. per planter)

4no. Buxus sempervirens
8no. Vinca 'Gertrude Jekyll'
(2no. per planter)

3no. Arbutus unedo
1no. Phlomis 'Edward Bowles'

2no. Phlomis 'Edward Bowles'
3no. Phillyrea angustifolia
1no. Ficus carica

PLANTER 2 PLANTING MIX:
26no. Nerine bowdenii
21no. Verbena bonariensis 'Lollipop'
21no. Stipa lessingiana
21no. Sisyrinchium striatum
100no. Armeria maritima
100no. Sedum acre
50no. Sedum bertam anderson
25no. Dianthus carthusianorum
1000no. Ipheion uniflorum 'White Star'
Specification as per DPS drawings

EXISTING TREES TO BE RETAINED AND PROTECTED

- 25no. Vinca 'Gertrude Jekyll' @ 400c/s
- 17no. Luzula sylvatica @ 350c/s
- 15no. Sarcococca hookeriana var. humilis @ 450c/s
- 120no. Hedera helix 'Arborescens' @ 400c/s
- 23no. Vinca 'Gertrude Jekyll' @ 400c/s
- 13no. Fragaria vesca @ 400c/s
- 11no. Dryopteris felix-mas @ 500c/s
- 2no. Sambucus nigra 'Lacinata'
- 29no. Vinca 'Gertrude Jekyll' @ 400c/s
- 15no. Sarcococca hookeriana var. humilis @ 450c/s
- 30no. Luzula sylvatica @ 350c/s
- 1no. Dryopteris felix-mas @ 500c/s
- 17no. Vinca 'Gertrude Jekyll' @ 400c/s

All dimensions to be verified on site. Figure dimensions to take precedence to those scaled. Any areas indicated on this drawing are for guidance only, no responsibility is taken for their accuracy.
The drawing is the property of Applied Landscape Design Limited. Copyright is reserved by them and the drawing is issued on the condition that it is not copied, reproduced, retained or disclosed to any unauthorized person, other wholly or in part without the written consent in writing of Applied Landscapes.

© 2015 Applied Landscape Design Limited. All rights reserved.

CDM/H&S:
The works illustrated on this drawing have been reviewed against the Design CDM Risk Register and significant risks are noted as:
Construction:
• Handling heavy materials
• Working adjacent to existing structures
Maintenance:
Demolition:

NOTES / KEY:

- SOFT LANDSCAPE KEY**
- SPECIMEN SHRUBS
to Dan Pearsons specification and details
 - PLANTING MIXES
Refer to specific notes for species, species to be set out randomly on site to Dan Pearsons specification and details
 - GROUND COVER PLANTING
Refer to planting schedule for details
 - BOX BALLS TOPIARY
8no. 500mm diameter (size / number tbc)
 - PLANT POTS
4no.
Species to be determined on site

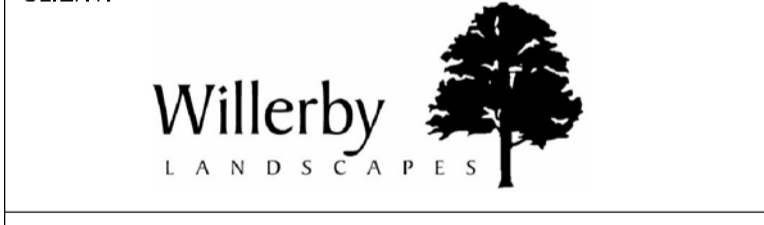
REFERENCE DRAWINGS/DOCUMENTS

Ref	Description
ALD653_GA001	General Arrangement

REVISIONS

no.	issued	date
P01	First issue for Information	25.08.15

CLIENT:



LANDSCAPE ARCHITECT:
The Threshing Barn
Bignall Park Barns
Chesham, Nr. Bleasden
Oxfordshire OX26 1TD
Tel: 01865 240776
Email: mail@appliedlandscape.co.uk
ALD
applied landscape design

PROJECT:

**TRIPLETS MARKETING SUITE
KXC, LONDON**

DRAWING TITLE:

SOFT LANDSCAPE LAYOUT

drawn: CW	scale: 1:100 @ A1
checked: KmJ	status: Information
date: 24.08.2015	xref file ref: ALD692_PLbase
PROJECT NO. ALD692	DRAWING NUMBER: PL401
	REVISION: P01