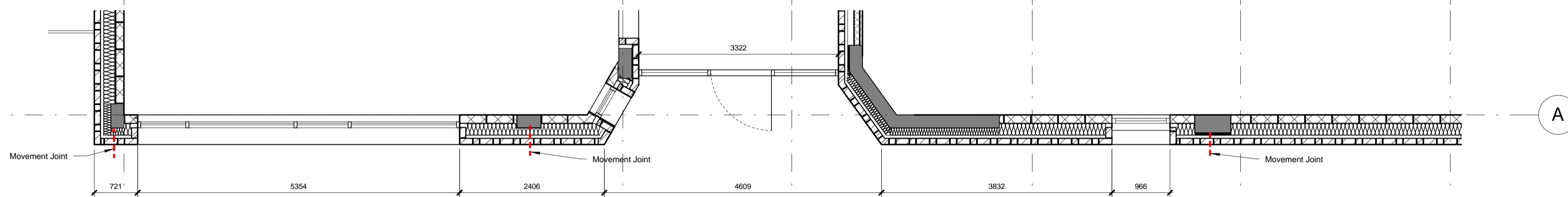
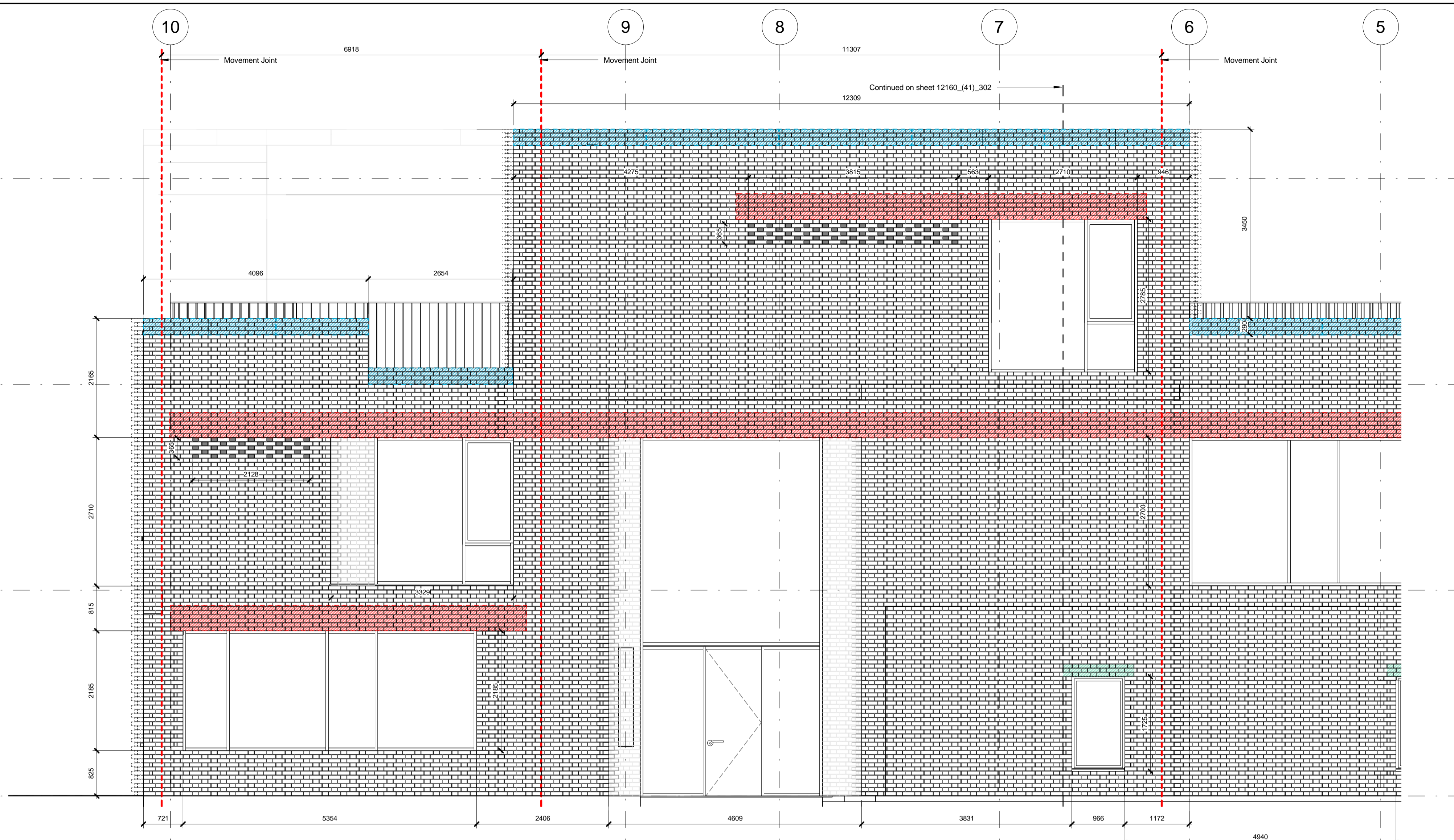


Level 3 (Roof)
FFL +37250

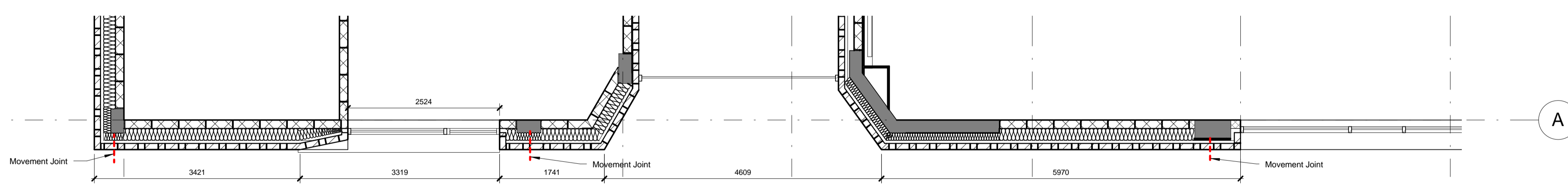
Level 2
FFL +33500

Level 1
FFL +29750

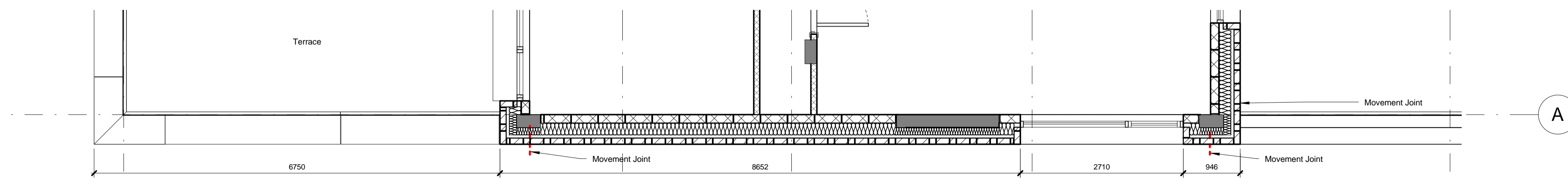
Level 0 (Ground)
FFL +26000



Ground Floor



First Floor



Second Floor

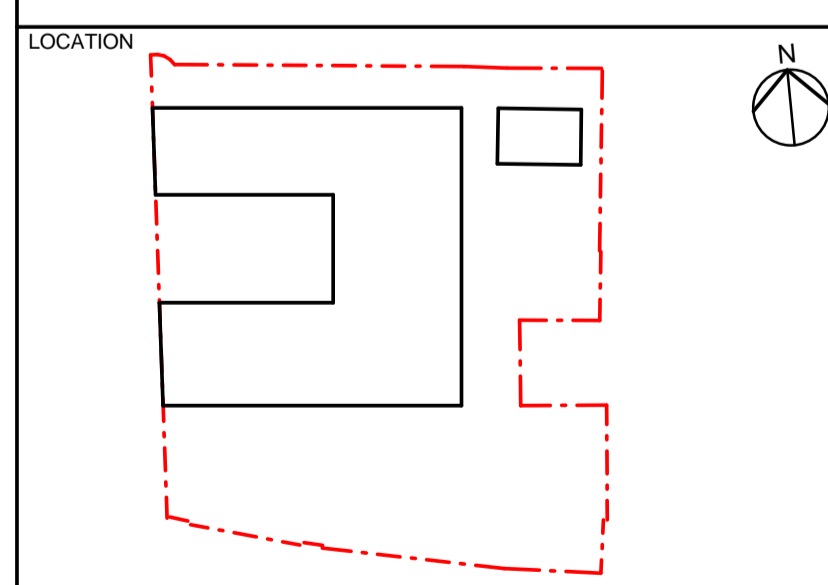
■ RC downstand location
■ SS single leaf lintel
■ Precast concrete coping

REV	DATE	DESCRIPTION
C00	10.07.2015	Stage 2 Design Issue

CONSULTANTS	
CLIENT:	Stanley Sidings
SCHOOL CLIENT TEAM:	Hawley School
	SCABAL
	Camden Children, Schools and Families
CONTRACTOR:	McLaughlin & Harvey
COST CONSULTANT:	Gardiner and Theobald
STRUCTURAL ENGINEER:	Walsh Group
MECHANICAL ENGINEER:	Kane Group
PUBLIC HEALTH ENGINEER:	Kane Group
ELECTRICAL ENGINEER:	Playfords

NOTE

- Do not scale from this drawing.
- All dimensions to be checked on site by the contractor and such dimensions to be his responsibility. Report all drawing errors, omissions and discrepancies to the architect.
- This document may be issued in an uncontrolled CAD format to enable others to use it as background information to make alterations and/or additions. In that instance the file will be accompanied by a PDF version. It is for those making such alterations and additions to ensure that they make use of current background information.
- AHMM Ltd accepts no liability for any such alterations or additions to the background information or arising out of changes to background information which occur prior to alterations of additions being made.



ALFORD HALL MONAGHAN MORRIS
 ARCHITECTS Ltd
 MORELANDS, 5-23 OLD STREET LONDON EC1V 9HL
 TEL 020 7251 5261 FAX 020 7251 5123 WEB WWW.AHMM.CO.UK

job title
Hawley Primary School
 drawing title / location
North Elevation Brickwork Setting out 1-2

drawn by	checked	scale	status
HC	DM	1 : 50 @ A1	FOR INFORMATION
project	number	revision	
HISC	AHMM 01 ZZZ DR A	800 0051	C00