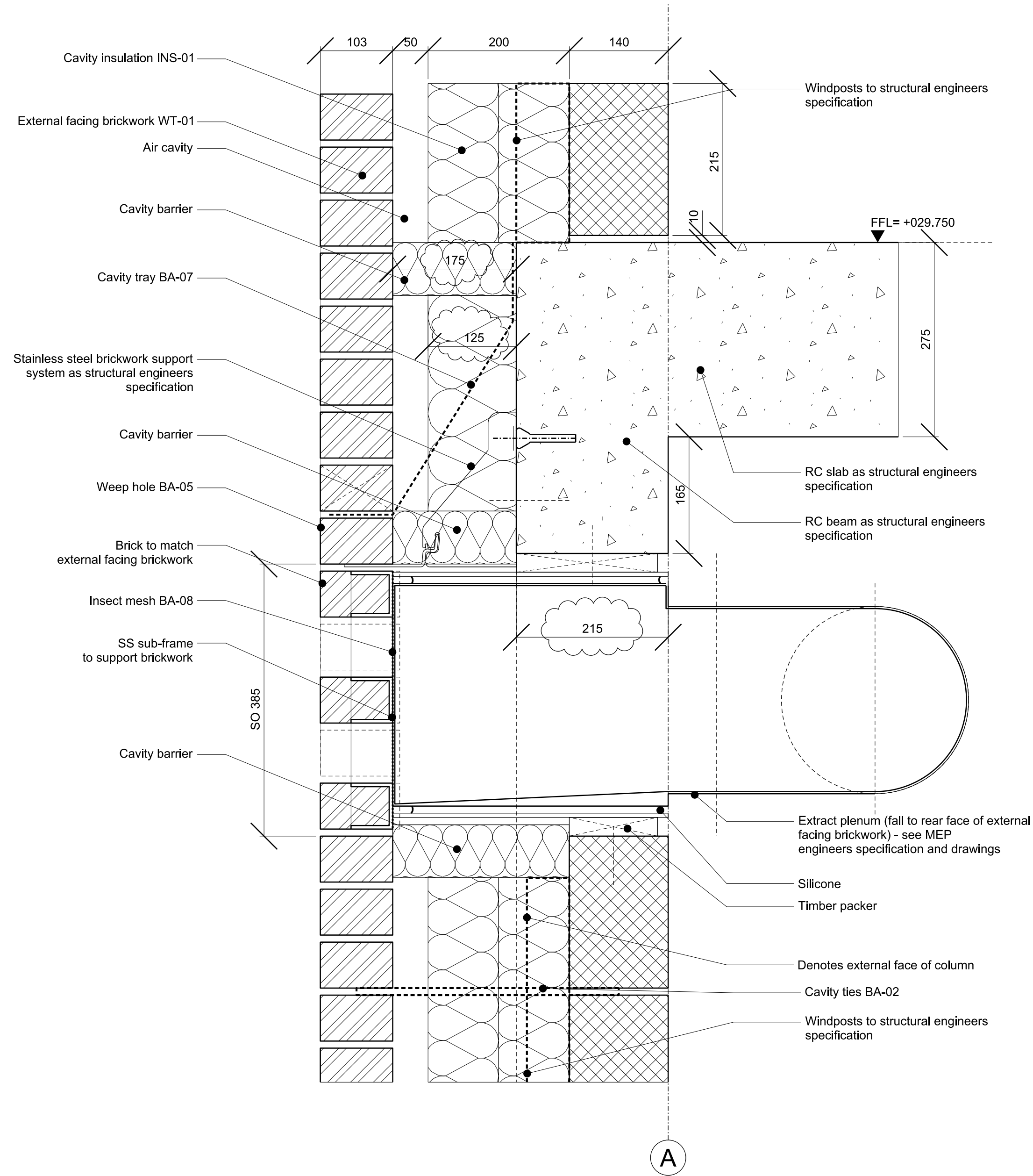


01 OPEN WEAVE BRICKWORK VENT DETAIL - ELEVATION



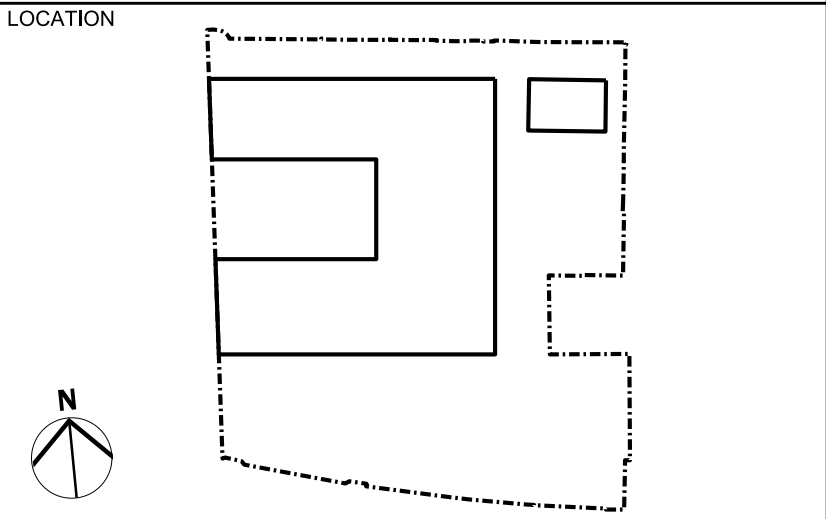
02 OPEN WEAVE BRICKWORK VENT DETAIL - SECTION

CONSULTANTS	
CLIENT:	Stanley Slidings
SCHOOL CLIENT TEAM:	Hawley School
	SCABAL
	Camden Children, Schools and Families
LANDSCAPE ARCHITECT:	Fabrik
PLANNING CONSULTANT:	Gerald Eve
STRUCTURAL ENGINEER:	Walsh Group
MECHANICAL ENGINEER, FIRE, BREEAM, ENERGY, ACOUSTICS:	Waterman Building Services
COST CONSULTANT:	Gardiner and Theobald
TRANSPORT CONSULTANT	Arup
CDM COORDINATOR	Waterman Building Services

REV	DATE
01	17/07/15 For Construction
00	10/07/15 Stage 2 Design Issue

NOTE

1. Do not scale from this drawing, other than for Planning purposes.
2. All dimensions to be checked on site by the contractor and such dimensions to be his responsibility.
3. Report all drawing errors, omissions and discrepancies to the architect.
4. This document may be issued in an uncontrolled CAD format to enable others to use it as background information to make alterations and/or additions. In that instance the file will be accompanied by a PDF version. It is for those making such alterations and additions to ensure that they make use of current background information. AHMM Ltd accepts no liability for any such alterations or additions to the background information or arising out of changes to background information which occur prior to alterations of additions being made.



ALLFORD HALL MONAGHAN MORRIS ARCHITECTS Ltd MORELANDS, 5-23 OLD STREET LONDON EC1V 9HL TEL 020 7251 5261 FAX 020 7251 5123 WEB WWW.AHMM.CO.UK		
job title HAWLEY PRIMARY SCHOOL		
drawing title / location EXTERNAL BRICKWORK DETAILS SHEET 5		
drawn by DM	checked / scale WL 1:5@A1; 1:10@A3	status CONSTRUCTION
project HISC	number AHMM 00 ZZZDR 800 0007	revision C01