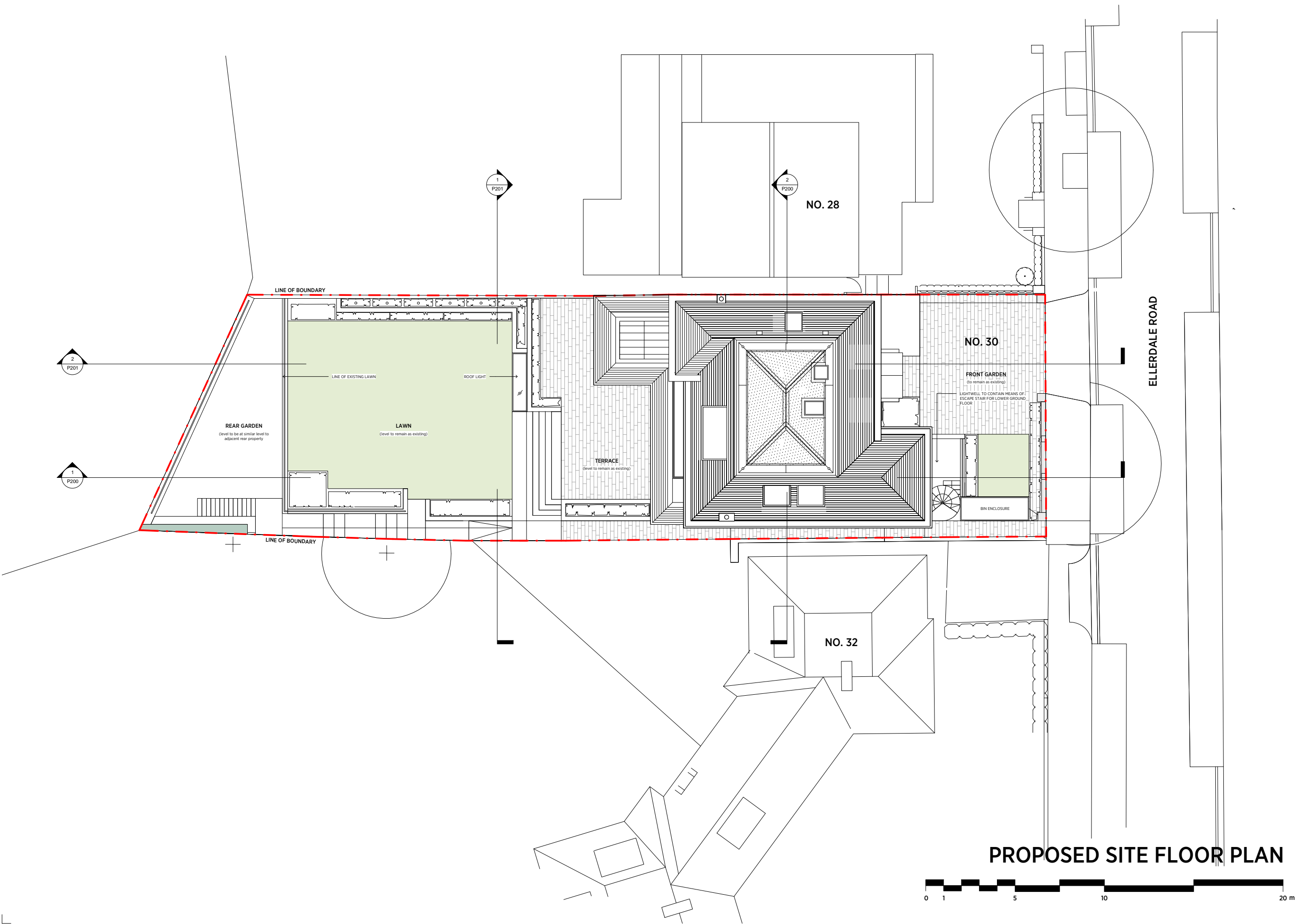


General notes:
 This drawing is copyright of KSR architects. This drawing must be read in conjunction with the Designer's Risk Assessment, specification and all other relevant documentation and drawings. KSR architects accept no liability for any expense, loss or damage of whatsoever nature and however arising from any variation made to this drawing or in the execution of the work to which it relates which has not been referred to them and their approval obtained.
 Do not scale from this drawing or the digital data, only figured dimensions are to be used. For Planning refer to linear scale. Check all dimensions on site prior to carrying out any works - advise any discrepancy.

Notes/Legends



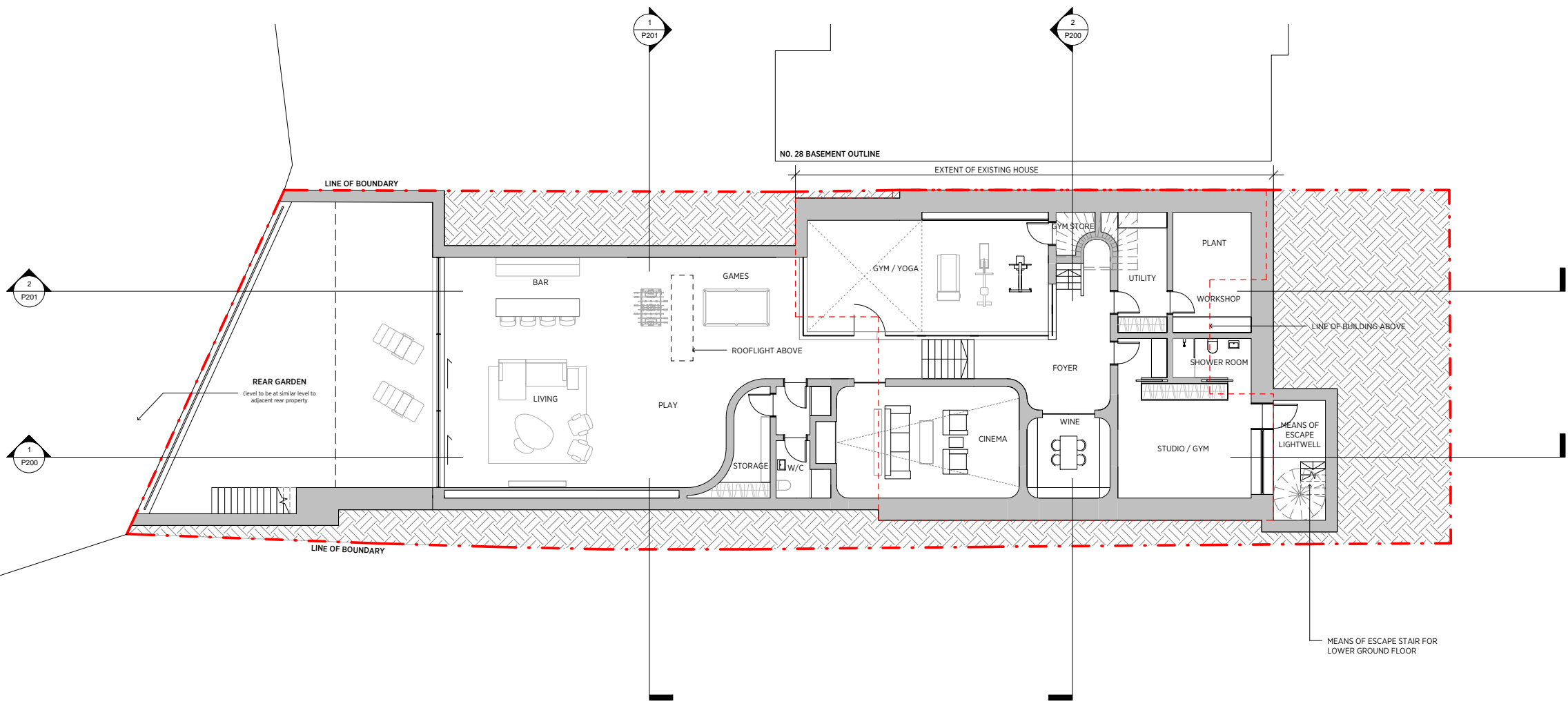
PROPOSED SITE FLOOR PLAN



| | | | |
|---|------------------------|-------------|-----|
| Rev | Description | Date | Chd |
| © KSR architects | | | |
| PLANNING | | | |
| Key Plan | | | |
| | | | |
| KSRARCHITECTS <small>KSR Architects LLP 14 Goswell Street London EC1M 6DU T +44 (0)20 7882 5000 email@ksrarchitects.com www.ksrarchitects.com</small> | | | |
| Project: 30 ELLERDALE ROAD | | | |
| Title: PROPOSED SITE PLAN | | | |
| Date: 08/04/20 | Drawn By: KA | Checked: RS | |
| Scale: 1:50 @ A1 / 1:200 @ A3 | Status: PLANNING | | |
| Project Ref: 15016 | Drawing No: 15016-P002 | Revision: | |

General notes:
 This drawing is copyright of KSR architects. This drawing must be read in conjunction with the Designer's Risk Assessment, specification and all other relevant documentation and drawings. KSR architects accept no liability for any expense, loss or damage of whatsoever nature and however arising from any variation made to this drawing or in the execution of the work to which it relates which has not been referred to them and their approval obtained.
 Do not scale from this drawing or the digital data, only figured dimensions are to be used. For Planning refer to linear scale. Check all dimensions on site prior to carrying out any works - advise any discrepancy

Notes/Legends



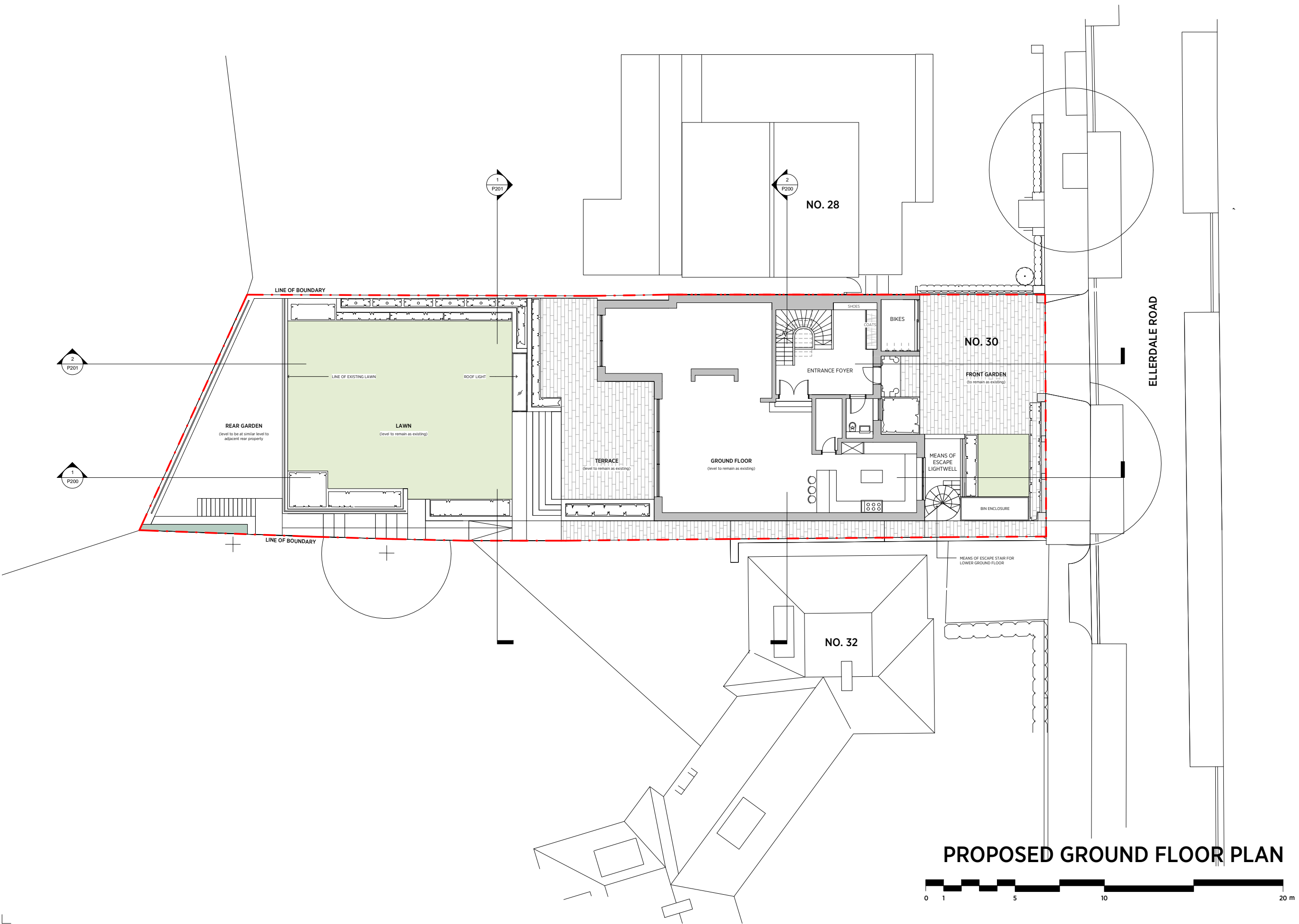
PROPOSED LOWER GROUND FLOOR PLAN



| | | | |
|---|------------------------|-----------|----------|
| Rev. | Description | Date | Chkd |
| 1 | © KSR architects | | |
| PLANNING | | | |
| Key Plan: | | | |
| | | | |
| KSRARCHITECTS <small>KSR Architects LLP 14 Goswell Street London EC1M 6BD t +44 (0)20 7882 0000 m ksr@ksrarchitects.com www.ksrarchitects.com</small> | | | |
| Project: 30 ELLERDALE ROAD | | | |
| Title: PROPOSED LOWER GROUND FLOOR PLAN | | | |
| Date: | 08/04/20 | Drawn By: | KA |
| Scale: | 1:50 @ A1 / 1:200 @ A3 | Checked: | RS |
| Project Ref: | 15016 | Status: | PLANNING |
| Drawing No: | 15016-P090 | Revision: | |

General notes:
 This drawing is copyright of KSR architects. This drawing must be read in conjunction with the Designer's Risk Assessment, specification and all other relevant documentation and drawings. KSR architects accept no liability for any expense, loss or damage of whatsoever nature and however arising from any variation made to this drawing or in the execution of the work to which it relates which has not been referred to them and their approval obtained.
 Do not scale from this drawing or the digital data, only figured dimensions are to be used. For Planning refer to linear scale. Check all dimensions on site prior to carrying out any works - advise any discrepancy.

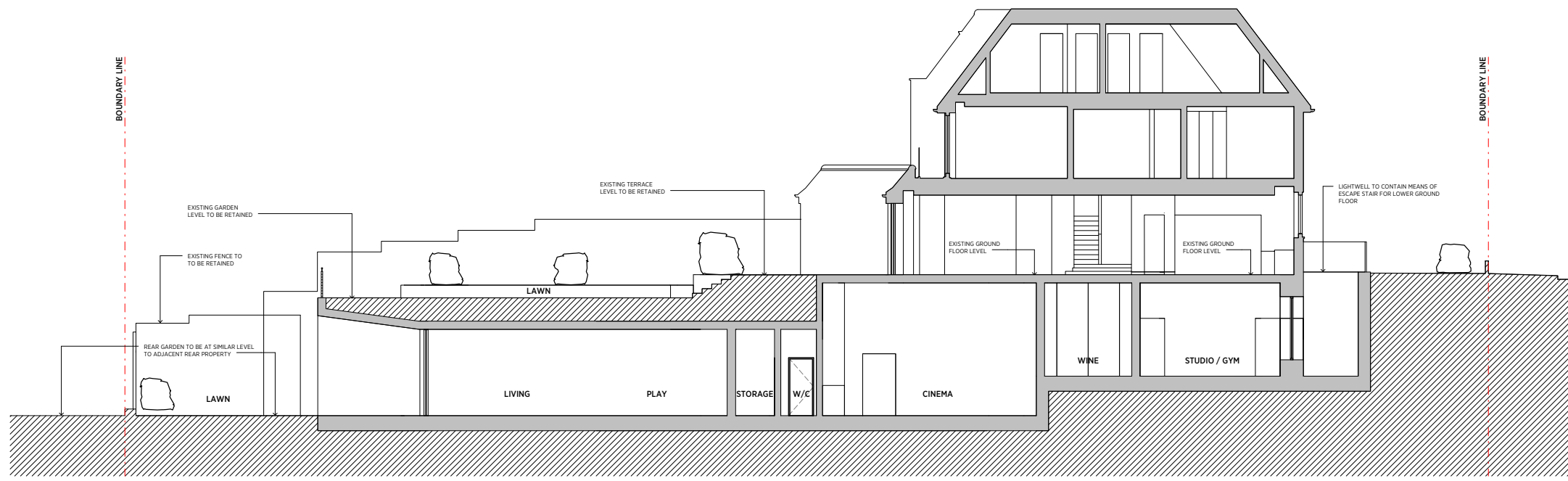
Notes/Legends



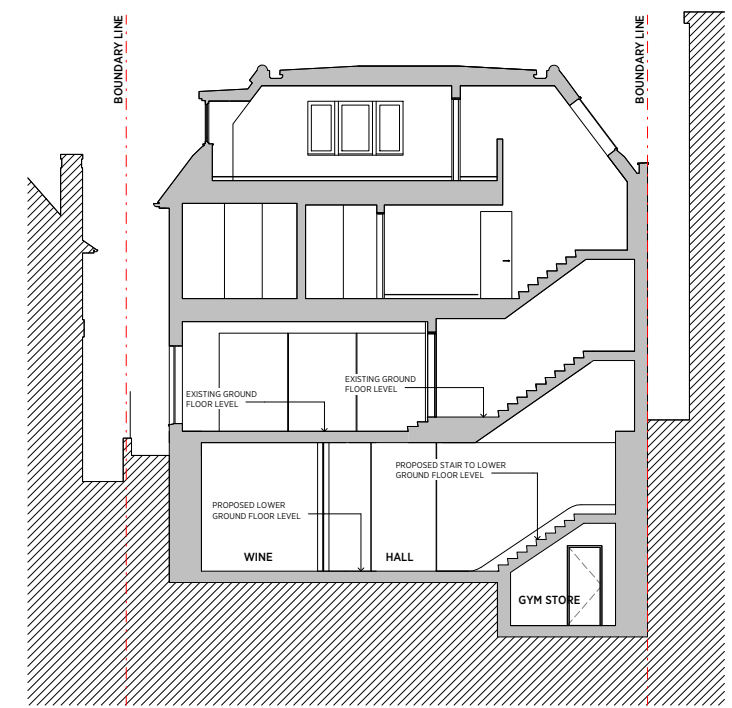
PROPOSED GROUND FLOOR PLAN



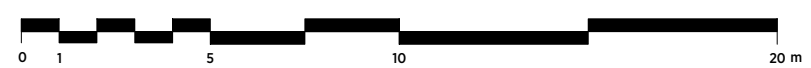
| Rev. | Description | Date | Chd. |
|---|------------------------|-----------|----------|
| 1 | © KSR architects | | |
| PLANNING | | | |
| Key Plan: | | | |
| | | | |
| <p>KSRARCHITECTS <small>KSR Architects LLP 14 Grosvenor Street London W1T 0ND T +44 (0)20 7882 5000 email@ksrarchitects.com www.ksrarchitects.com</small></p> | | | |
| Project: 30 ELLERDALE ROAD | | | |
| Title: PROPOSED GROUND FLOOR PLAN | | | |
| Date: | 08/04/25 | Drawn By: | KA |
| Scale: | 1:50 @ A1 / 1:200 @ A3 | Checked: | RS |
| Project Ref: | 15016 | Status: | PLANNING |
| Drawing No: | 15016-P100 | Revision: | |



PROPOSED SECTION A



PROPOSED SECTION B



General notes:
 This drawing is copyright of KSR architects. This drawing must be read in conjunction with the Designer's Risk Assessment, specification and all other relevant documentation and drawings. KSR architects accept no liability for any expense, loss or damage of whatsoever nature and however arising from any variation made to this drawing or in the execution of the work to which it relates which has not been referred to them and their approval obtained.
 Do not scale from this drawing or the digital data, only figured dimensions are to be used. For Planning refer to linear scale. Check all dimensions on site prior to carrying out any works - advise any discrepancy

Notes/Legends

| No. | Description | Date | Check |
|-----|----------------|------|-------|
| 1 | KSR architects | | |

Stamp
PLANNING

Key Plan

KSRARCHITECTS
 KSR Architects LLP
 14 Goswell Street
 London EC1M 6DD
 T +44 (0)20 7882 5000
 email@ksrarchitects.com
 www.ksrarchitects.com

Project:
30 ELLERDALE ROAD

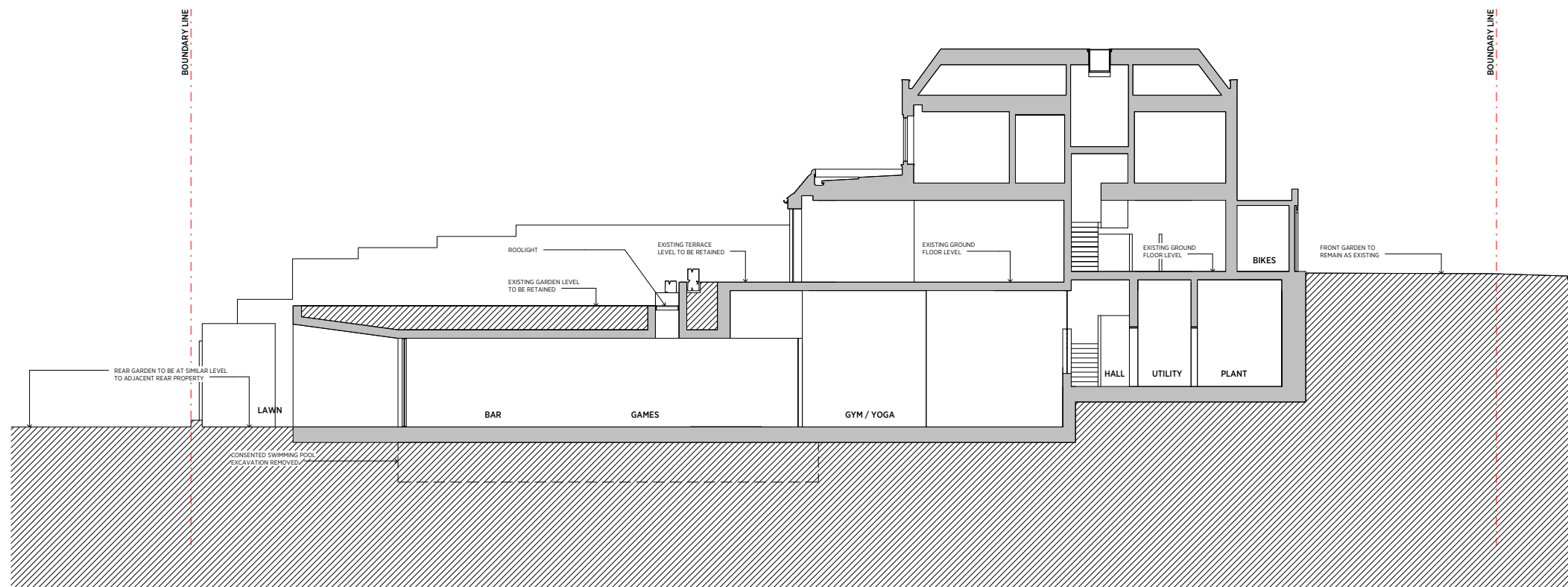
Title:
PROPOSED SECTION A & B

| | | |
|-------------------------------|------------------|-------------|
| Date: 08/14/16 | Drawn By: KA | Checked: RS |
| Scale: 1:50 @ A1 / 1:200 @ A3 | Status: PLANNING | |

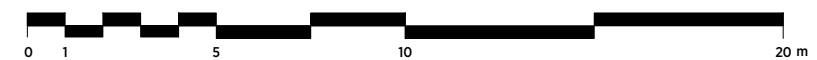
| | | |
|------------------------------|----------------------------------|-----------|
| Project Ref: 15016 | Drawing No: 15016-P200 | Revision: |
|------------------------------|----------------------------------|-----------|



PROPOSED SECTION C



PROPOSED SECTION D



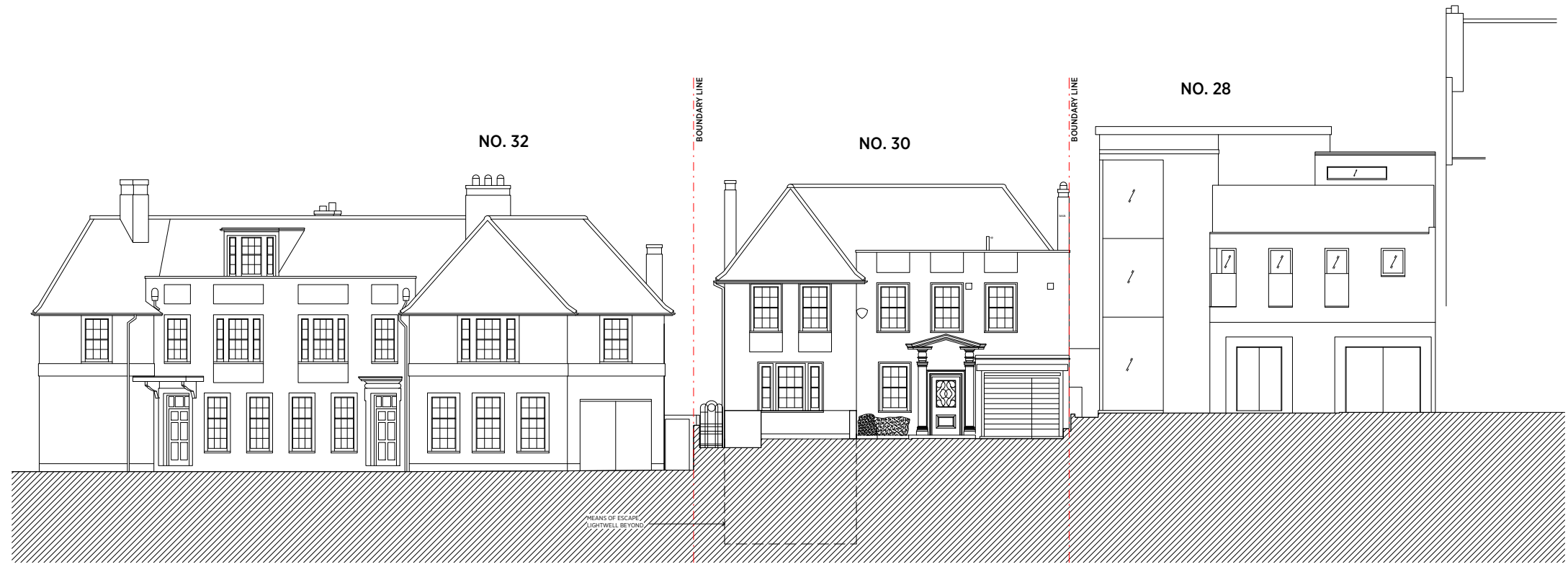
General notes:
 This drawing is copyright of KSR architects. This drawing must be read in conjunction with the Designer's Risk Assessment, specification and all other relevant documentation and drawings. KSR architects accept no liability for any expense, loss or damage of whatsoever nature and however arising from any variation made to this drawing or in the execution of the work to which it relates which has not been referred to them and their approval obtained.
 Do not scale from this drawing or the digital data, only figured dimensions are to be used. For Planning refer to linear scale. Check all dimensions on site prior to carrying out any works - advise any discrepancy.

Notes/Legends

| | | | |
|--|------------------------|----------|----------|
| Rev | Description | Date | Drawn |
| 0 | KSR architects | | |
| PLANNING | | | |
| Key Plan | | | |
| KSRARCHITECTS | | | |
| KSR Architects LLP 14 Goswell Street London EC1M 6DD T +44 (0)20 7882 5000 E info@ksrarchitects.com W www.ksrarchitects.com | | | |
| Project 30 ELLERDALE ROAD | | | |
| Title PROPOSED SECTION C & D | | | |
| Date | 08/16/20 | Drawn By | KA |
| Scale | 1:50 @ A1 / 1:200 @ A3 | Checked | RS |
| Project Ref | 15016 | Status | PLANNING |
| Drawing No | 15016-P201 | Revision | |

General notes:
 This drawing is copyright of KSR architects. This drawing must be read in conjunction with the Designer's Risk Assessment, specification and all other relevant documentation and drawings. KSR architects accept no liability for any expense, loss or damage of whatsoever nature and however arising from any variation made to this drawing or in the execution of the work to which it relates which has not been referred to them and their approval obtained.
 Do not scale from this drawing or the digital data, only figured dimensions are to be used. For Planning refer to linear scale. Check all dimensions on site prior to carrying out any works - advise any discrepancy.

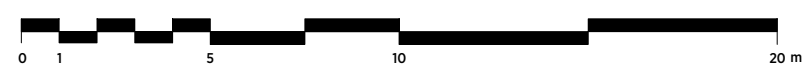
Notes/Legends



PROPOSED FRONT ELEVATION



PROPOSED REAR ELEVATION



| No. | Description | Date | Drawn |
|-----|----------------|------|-------|
| 1 | KSR architects | | |

PLANNING

Key Plan

KSRARCHITECTS
 KSR Architects LLP
 14 Goswell Street
 London EC1M 6DQ
 T +44 (0)20 7482 5000
 email@ksrarchitects.com
 www.ksrarchitects.com

Project:
30 ELLERDALE ROAD

Title:
PROPOSED FRONT & REAR ELEVATION

| | | |
|-------------------------------|------------------|-------------|
| Date: 08/16 | Drawn By: KA | Checked: RS |
| Scale: 1:50 @ A1 / 1:200 @ A3 | Status: PLANNING | |

| | | |
|-----------------------|---------------------------|-----------|
| Project Ref: 15016 | Drawing No: 15016-P300 | Revision: |
|-----------------------|---------------------------|-----------|