

107A Priory Road, London NW6 3NN


Consideration of requirement for a Basement Impact Study

CA4603.02

Read with CA4603.03

Contents

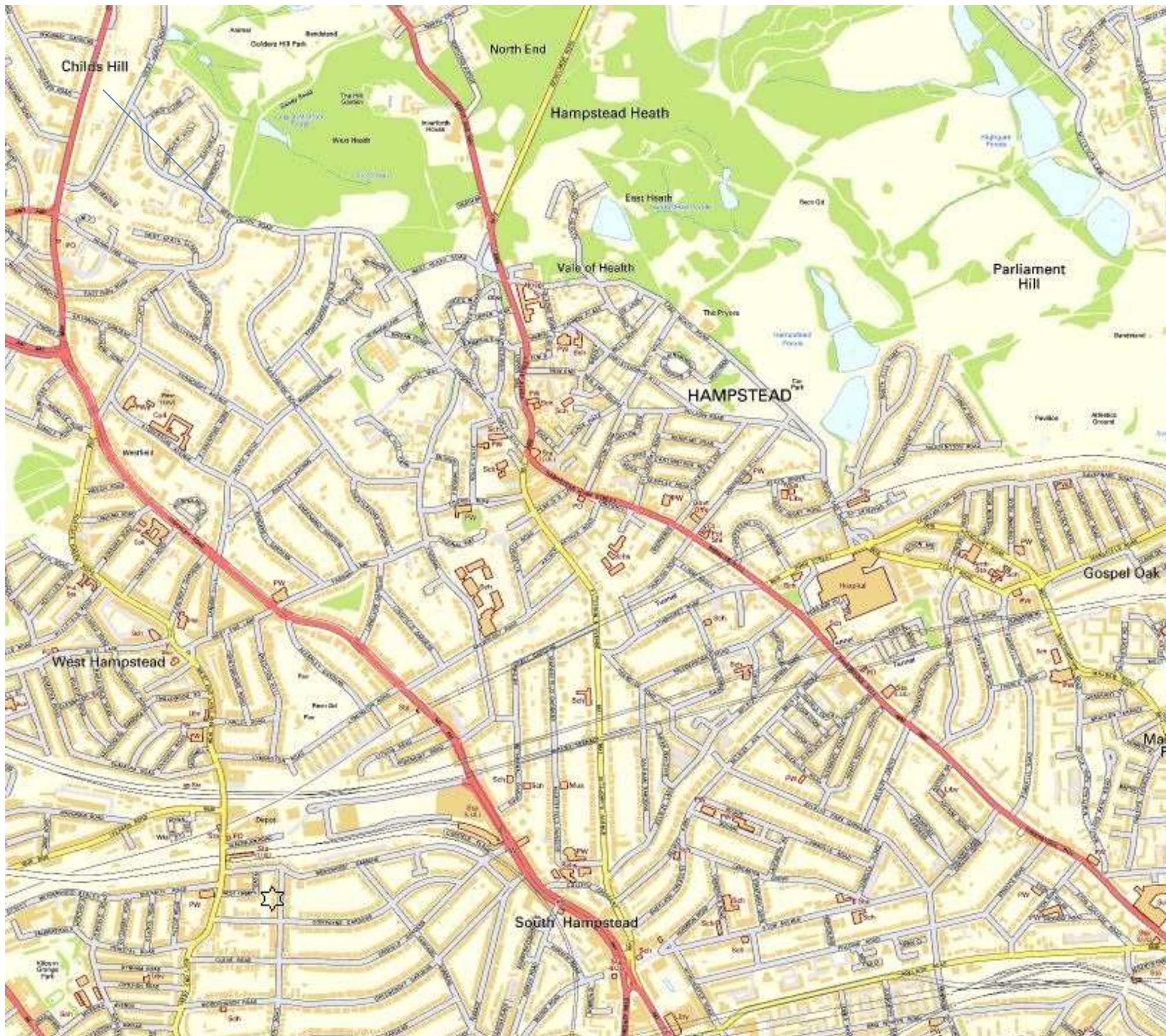
Streets at Risk of Surface water flooding	Adjacent
OS map showing location of Hampstead Ponds	Page 2
Map showing Lost Rivers of London	Page 3
Map showing Local Water Courses	Page 4
Map showing Ground Slope Angles	Page 5
Map showing areas of Landslip	Page 6
Map showing Local Transport	Page 7

107A Priory Road is shown as  on each plan

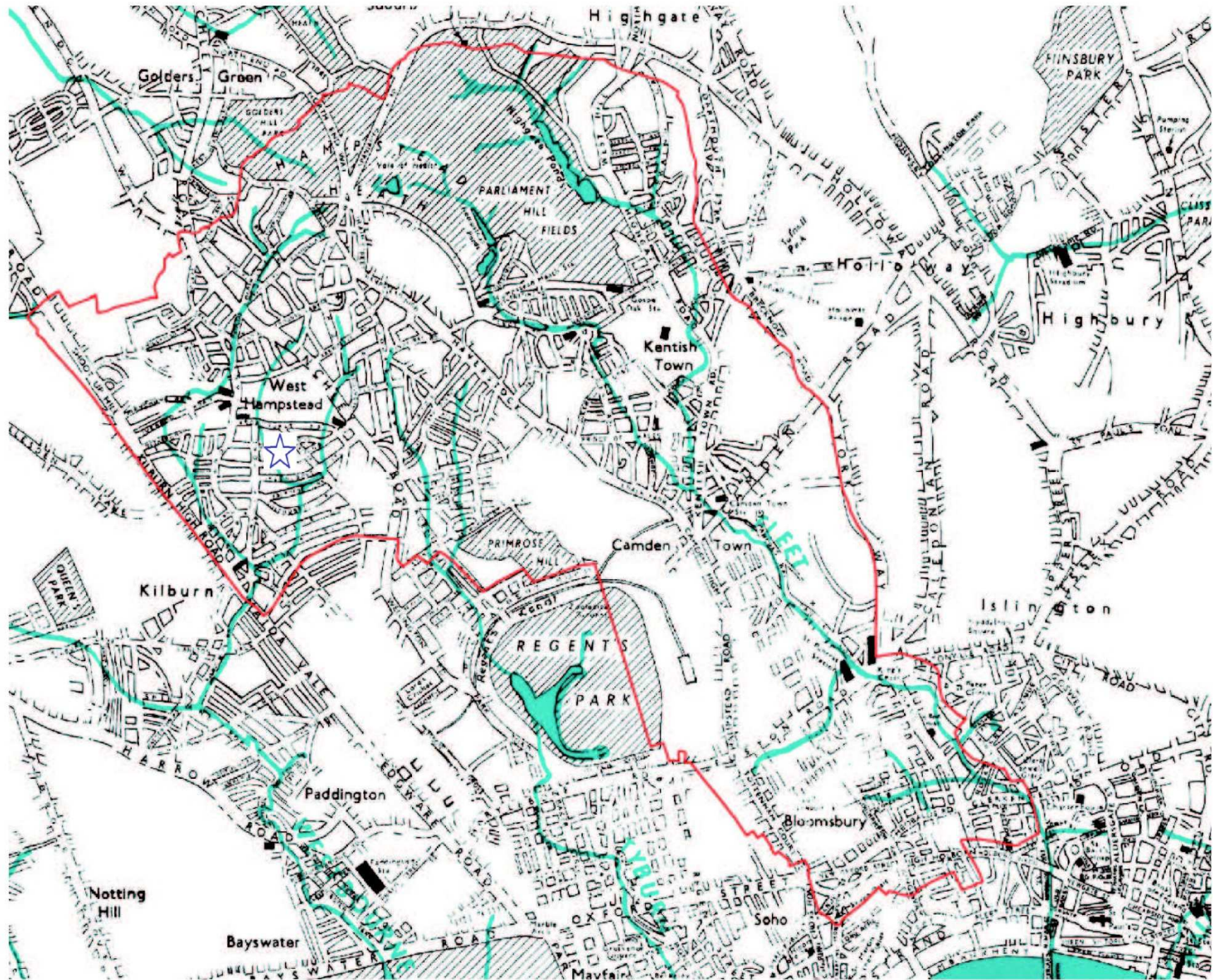
Streets at risk of surface water flooding

Abbey Road	1975	Jeffreys Street	2002
Aberdare Gardens	1975	Kelly Street	1975 and 2002
Achilles Road	2002	Kentish Town Road	1975
Adamson Road	2002	Kidderpore Gardens	1975
Agamemnon Road	2002	Kilburn High Road	1975
Ajax Road	2002	Kilburn Priory	1975
Aldred Road	2002	Kingdon Road	2002
Arkwight Road	1975 and 2002	Kingsgate Road	1975
Arkwright Road	1975 and 2002	Lady Margaret Road	2002
Avenue Road	2002	Lambolle Road	1975
Belsize Lane	1975 and 2002	Lancaster Drive	2002
Belsize Park Gardens	1975	Lancaster Grove	1975 and 2002
Belsize Road	1975 and 2002	Langland Gardens	1975
Boundary Road	1975	Lowfield Road	1975
Broadhurst Gardens	1975	Lyncroft Gardens	2002
Broomsleigh Street	1975	Lyndurst Gardens	1975
Bullbarrow, Abbey Road Estate	1975	Mansfield Road	1975
Canfield Gardens	1975 and 2002	Maygrove Road	1975
Cannon Hill	1975 and 2002	Menelik Road	2002
Caversham Road	2002	Messina Avenue	1975
Chalcot Gardens	1975	Mill Lane	1975 and 2002
Chesterford Gardens	2002	Nassington Road	2002
Cotleigh Road	1975	Oak Village	1975
Dennington Park Road	1975 and 2002	Ornan Road	2002
Edis Street	1975	Pandora Road	1975 and 2002
Egbert Street	1975	Park End	1975
Fairfax Road	2002	Parkhill Road	1975 and 2002
Fairhazel Gardens	1975 and 2002	Parliament Hill	2002
Fellows Road	1975	Platt's Lane	1975 and 2002
Fencroft Avenue	1975	Primrose Hill Road	1975 and 2002
Finchley Road	2002	Prince of Wales Road	2002
Fleet Road	2002	Princess Road	1975
Fordwych Road	1975	Priory Road	2002
Frognal Gardens	1975	Priory Terrace	1975
Gaisford Street	2002	South End Road	2002
Glenhurst Avenue	2002	South Hill Park	2002
Gloucester Avenue	1975	South Hill Park Gardens	2002
Goldhurst Terrace	1975 and 2002	Sumatra Road	1975 and 2002
Gospel Oak Estate	1975	Swains Lan	1975
Greencroft Gardens	1975 and 2002	Tanza Road	2002
Hampstead Lane N6	1975	Templewood Avenue	2002
Harben Road	2002	Templewood Gardens	2002
Harley Road	1975	Wendling, Haverstock Road	2002
Hawley Road	1975	West End Lane	2002
Heath Street	1975	Westbere Road	2002
Hemstal Road	1975	Willow Road	1975 and 2002
Highgate Road	1975	Winchester Road	1975
Hillfield Road	1975 and 2002	Windmill Hill	1975
Holmdale Road	1975 and 2002	Woodchurch Road	2002
Ingestre Road	2002	Woodsome Road	1975
Inglewood Road	2002	York Rise	1975

Source: Floods in Camden, Report of the Floods Scrutiny Panel, London Borough of Camden 2003, Appendix 4, Flooded Roads in Camden 1975 and 2002.



OS map showing location of Hampstead Ponds



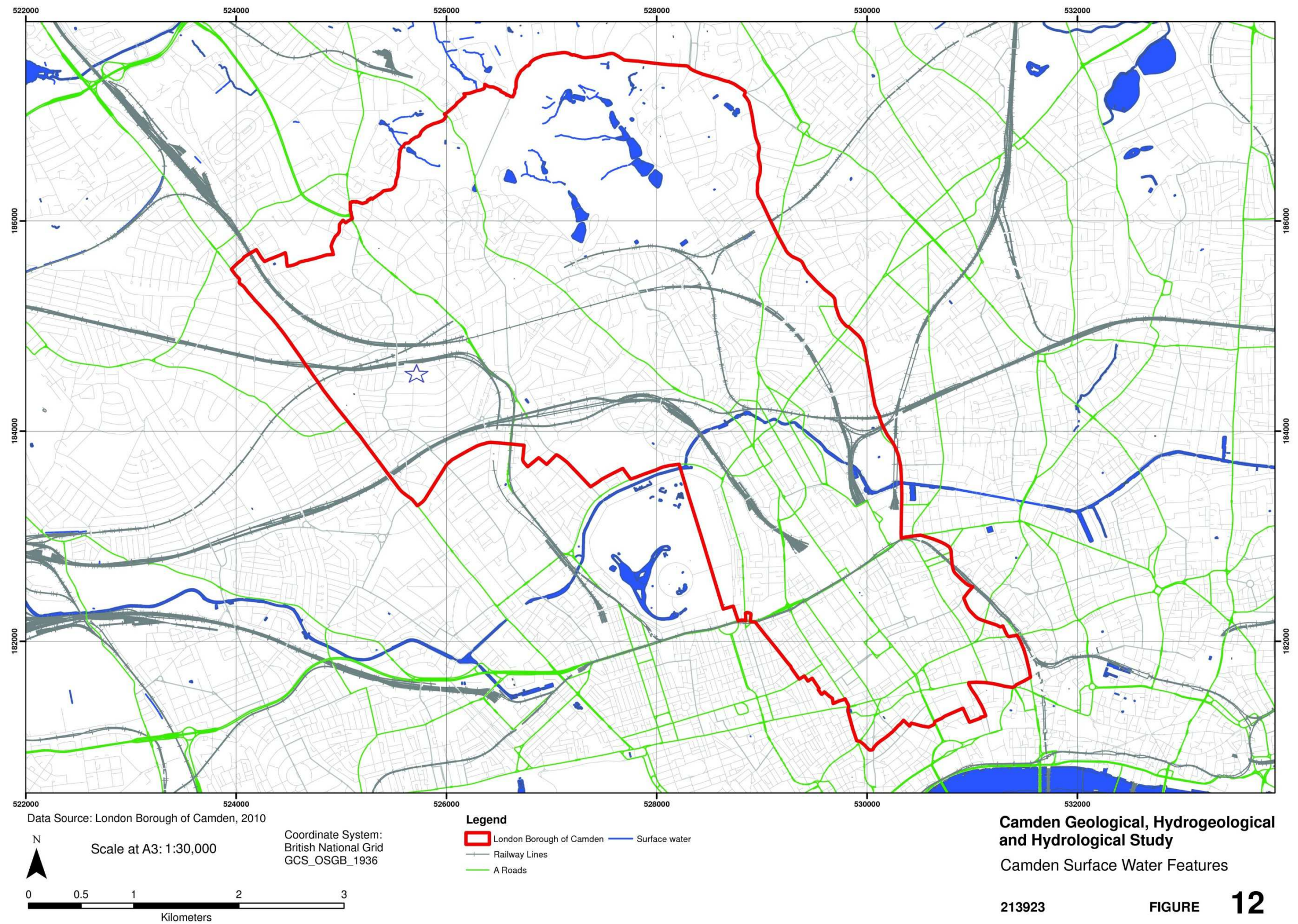
Camden Geological, Hydrogeological and Hydrological Study
Watercourses

Source – Barton, Lost Rivers of London

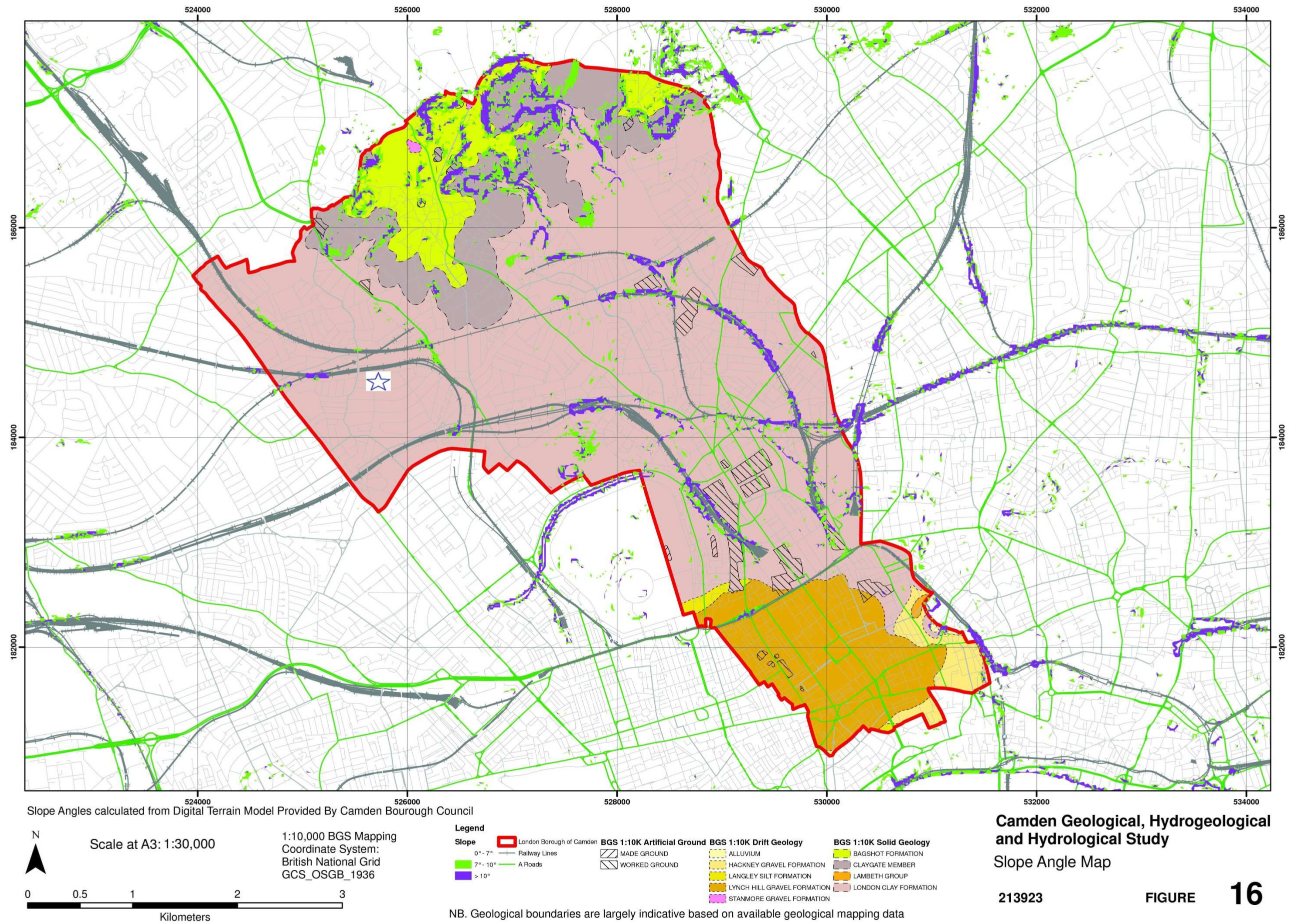
213923

FIGURE 11

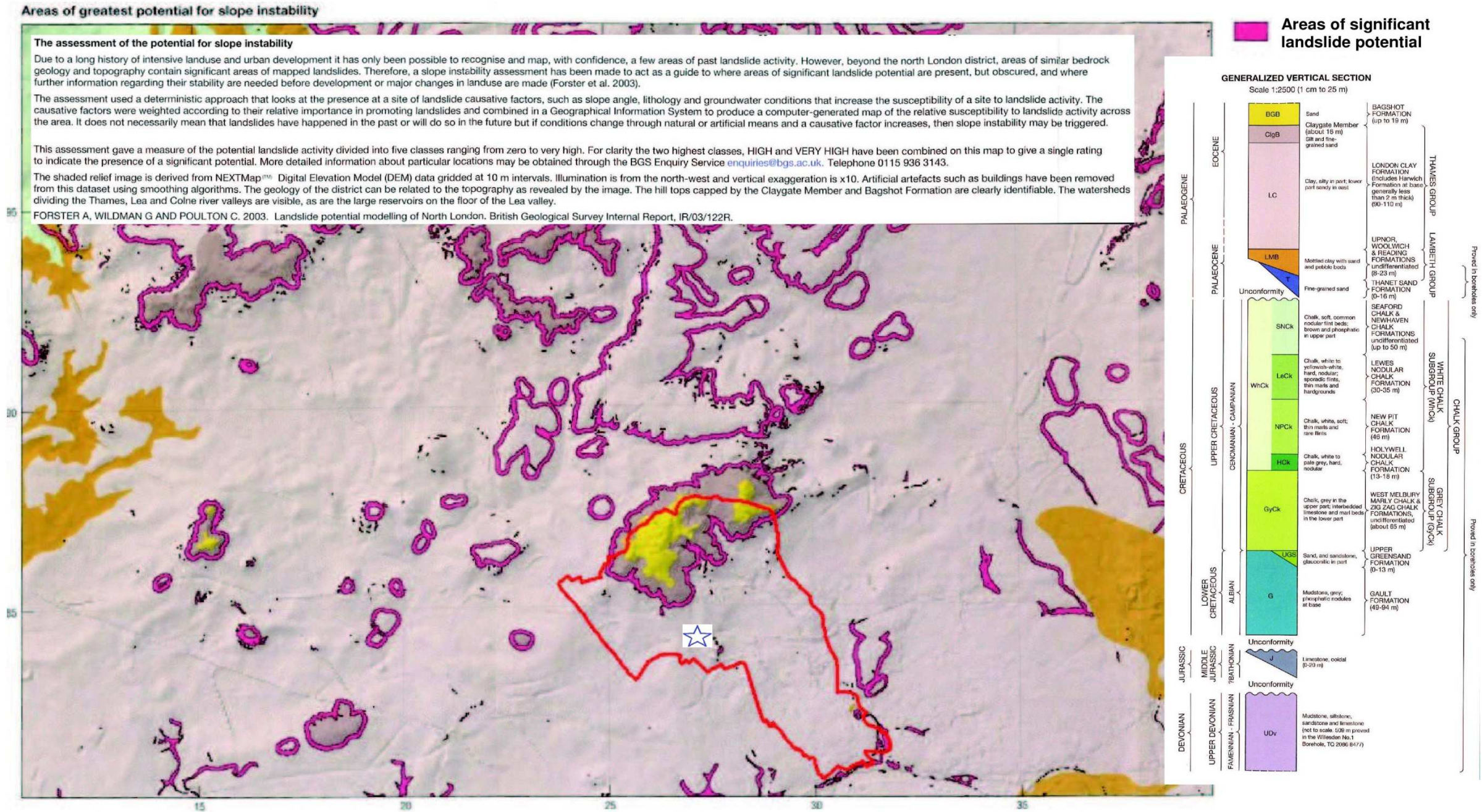
Map showing Lost Rivers of London



Map showing Local Water Courses



Map showing Ground Slope Angles



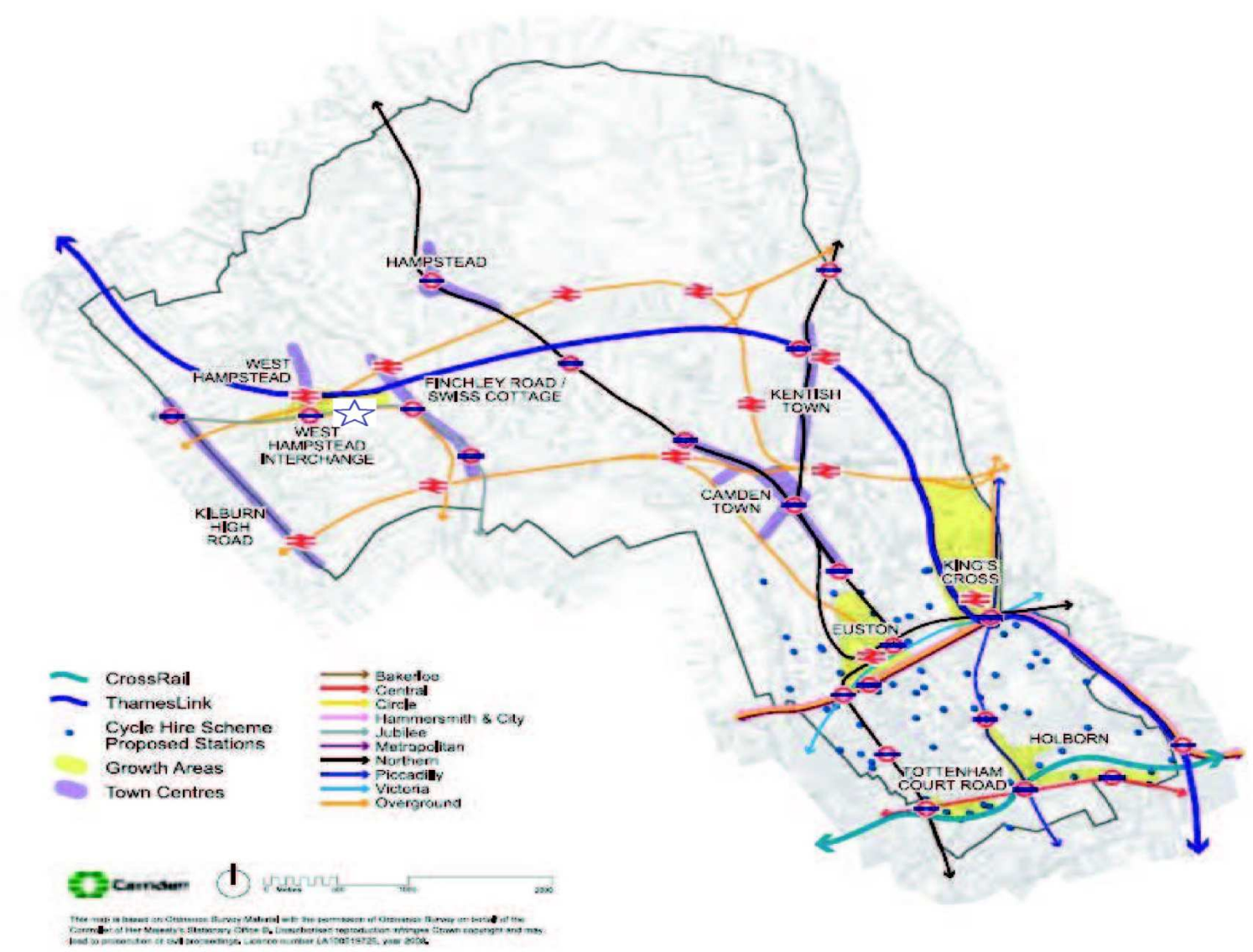
Source - British Geological Society, 1:50,000 Series
England and Wales Sheet 256 - North London

**Camden Geological, Hydrogeological
and Hydrological Study**
Areas of landslide potential

213923

FIGURE 17

Map showing areas of Landslip



urce - London Borough of Camden, January 2010. *Camden Core Strategy Proposed Submission*.

**Camden Geological, Hydrogeological
and Hydrological Study**
Transport Infrastructure

213923

FIGURE **18**

Map showing Local Transport