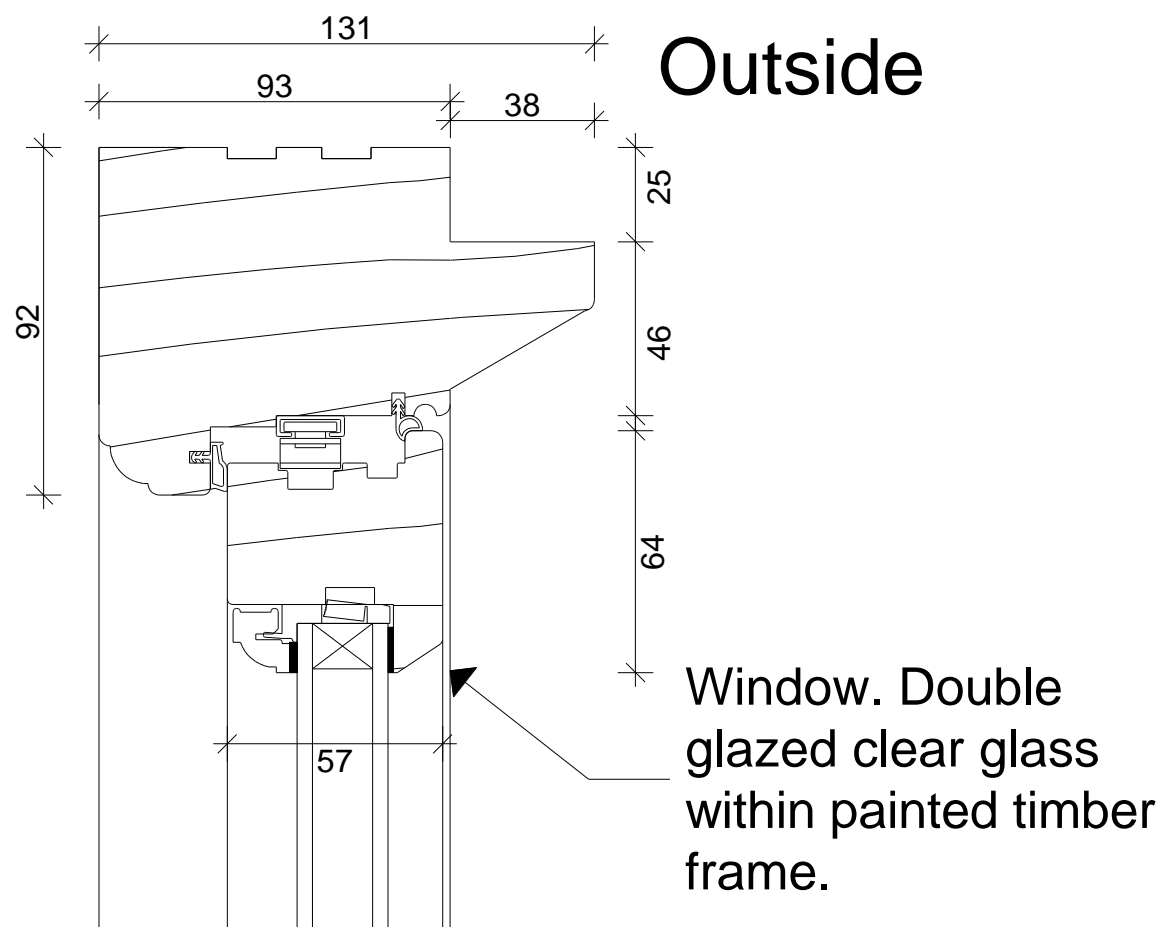


# Inside

# Outside

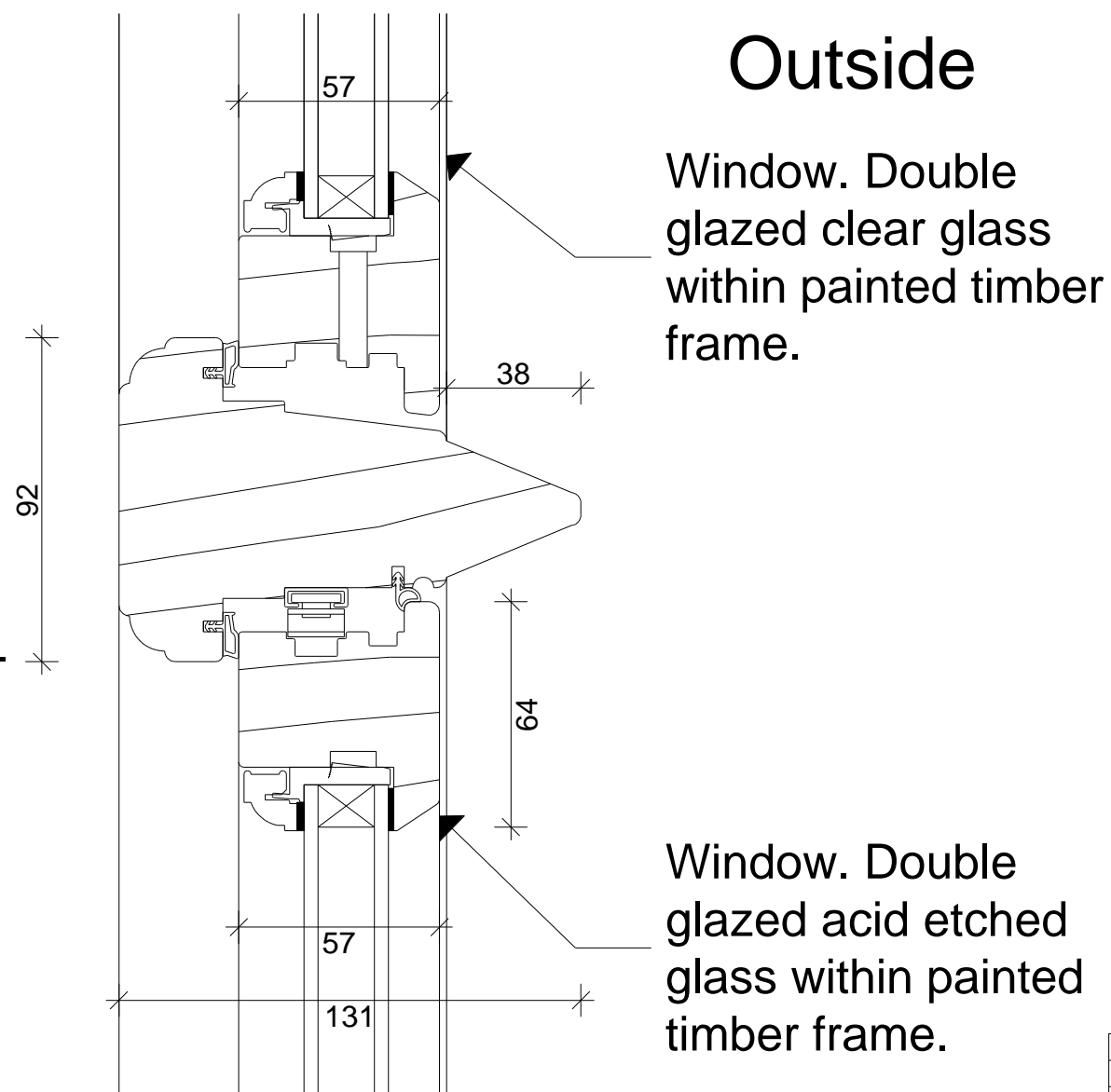
## Window Head



# Inside

# Outside

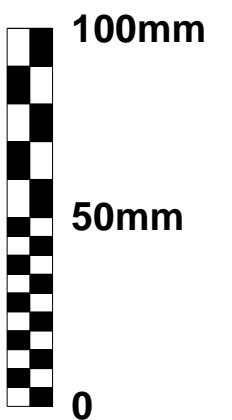
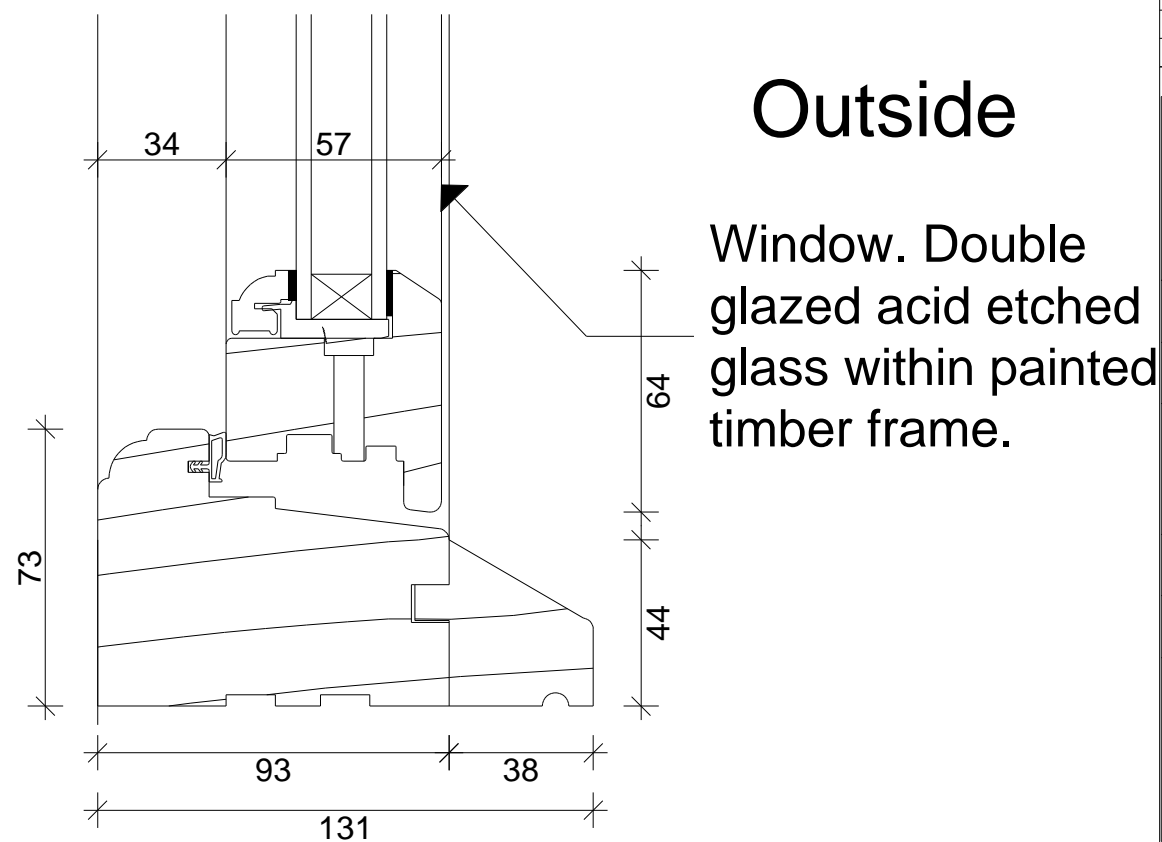
## Window Transom




# Inside

# Outside

## Window Cill



Preliminary		
Planning		
Building Regs.		
Tender		
Construction		
As-built		
File Ref: 1123 - BB - Plans 31a.pln © Copyright		
<div><p>ARCHITECTS</p><p>DONALD SHEARER</p><p>CHARTERED ARCHITECTS</p></div> <div>Scholar's House, Shotton Brook Office Park, Timothy's Bridge Road, Stratford-upon-Avon, Warwickshire, CV37 9NR</div> <div>Tel: 01789 294 560 donald@ds-architects.demon.co.uk</div>		
Project	Lithos House, 307 Finchley Road	
Client	Gallery Zadah Pension Fund	
Drawing	Detail 005 - Window Head, Transom and Cill details	
Date	Scale	Drawing
Aug 15	1:2	size A3
Reference Number	1123-BB-120 A	
Rev	Date	
A	15/09	Design amendments.