

The Post Building

21-31 New Oxford Street

Salvage Plan



Contents

1.0	Salvage Plan	
1.01	Elements to Salvage	5
1.02	Catalogue (Small Items)	6
1.03	Catalogue (Large Items)	8
2.0	Salavage Plan Drawings	17
2.01	Drawings	17
2.02	Basement Floor	18
2.03	Ground Floor	19
2.04	First Floor	20
2.05	Second Floor	21
2.06	Third Floor	22
2.07	Fourth and Fifth Floor	23
2.08	Sixth and Roof Floor	24

I.0 Salvage Plan

I.0I Elements to Salvage

This document has been prepared by Allford Hall Monaghan Morris Architects for 21-31 New Oxford Street, and is to be read in conjunction with document R089_Internal Heritage Strategy.

The following pages detail elements within the existing building which are to be salvaged.

Section 1.0 includes a pictorial description of each element to be retained.

Section 2.0 demonstrates the locations of such elements on plan where the location is known.

Many of the items to be salvaged are in-situ installations.

As such a methodology is to be prepared and approved for removal and storage of all items to ensure the equipment is not damaged.

Please note, salvage works are not to be undertaken until a full asbestos survey has been carried out and a removal methodology agreed as outlined in the Demolition Specification.



I.0 Salvage Plan

I.02 Catalogue (Small items)



Item #01

Object: Pressure Gauge

Note: Pressure Gauge to be retained.

Location: Wall mounted on stair landing, Third Floor. Refer to Plan (Section 2.0) for further details of location.



Item #02

Object: 'Bags Arriving' Indicator sign

Note: Sign and housing to be removed from sorting installation and retained.

Location: First Floor north-west corner sorting installation chute. Refer to Plan (Section 2.0) for further details of location.



Item #03

Object: Wall Plaque

Note: Plaque to be retained.

Location: Ground Floor south-west entrance.

I.0 Salvage Plan
I.03 Catalogue (Large items)



Item #04

Object: Sorting Office Control Unit

Element 1: Control Unit cabinet to be removed as one piece and retained as a single unit. To maintain the unit as one piece, careful investigations and a strategic plan will need to be discussed and approved prior to removal commencing on site.

Element 2: Control Unit cabinet doors to be removed from cabinet and retained. Extents of the attached electrical workings to be salvaged to be discussed and agreed upon prior to removal commencing on site.

Location: Third Floor Plant Room. Refer to Plan (Section 2.0) for further details of location.

Element 1
(retain in full)



Element 1
(retain in full)





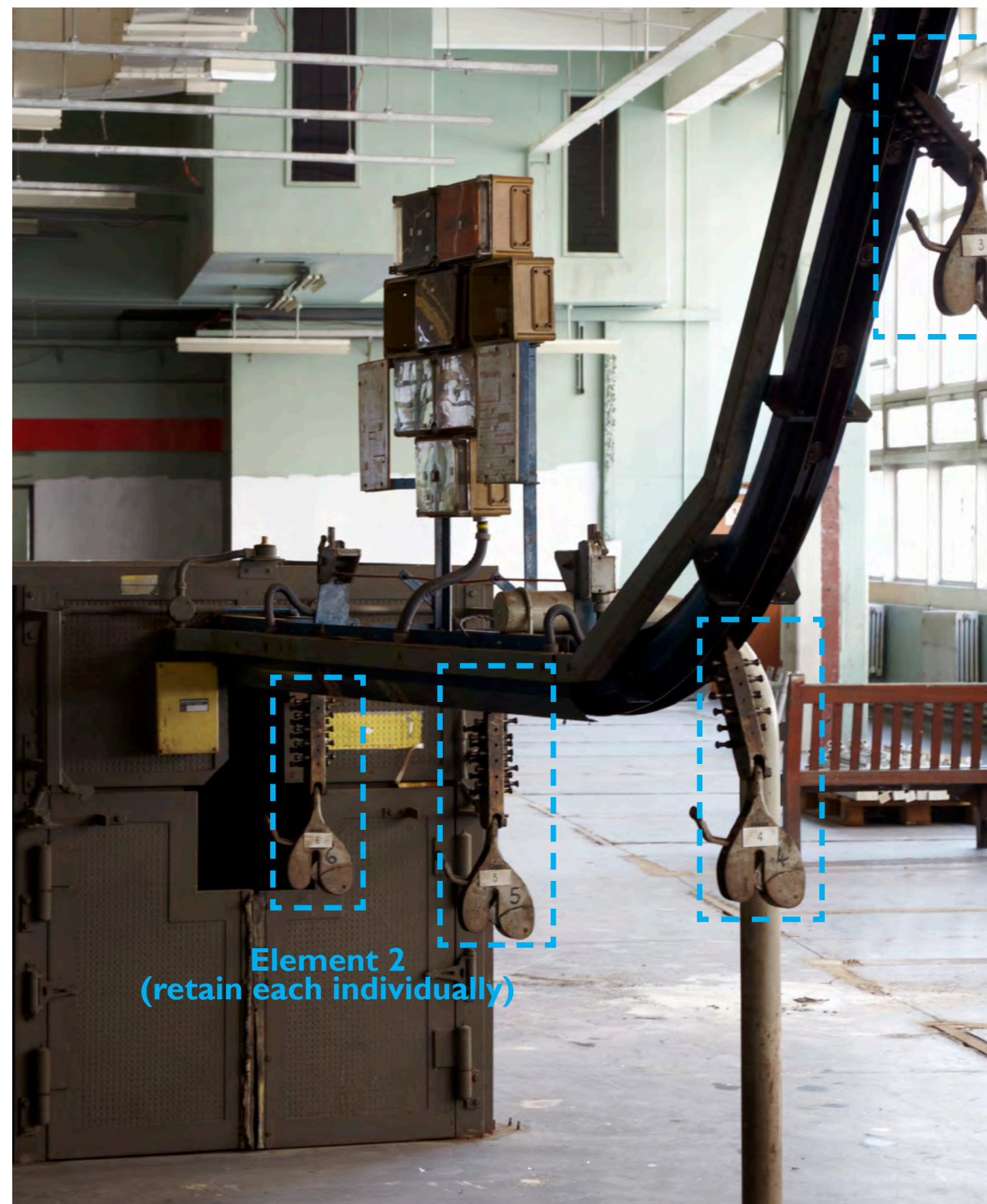
Item #05

Object: Sorting Installation Elements

Element 1: Conveyor indicators (highlighted in blue in the picture above) to be retained in full as a single element.

Element 2: Conveyor catches (highlighted in blue in the picture to the right-hand side) to be removed from conveyor rail and individually retained. Please note, the reference picture is not inclusive of all elements. All conveyor catches are to be retained.

Location: First Floor north-west corner. Refer to Plan (Section 2.0) for further details of location.



I.0 Salvage Plan

I.03 Catalogue (Large items)



Item #06

Object: East and west-bound Gravity Spiral Chutes

Note: Gravity Spiral Chutes located on first floor to be retained.

Wooden boxing at lower lever (highlighted in red in the pictures on this page) to be removed for inspection of connection between chutes and floor with CA prior to commencing with removal of chute.

A total of 2 chutes are to be retained. Specific chutes to be agreed on site with CA following removal of timber housing and inspection of connection with floor.

Demolition contractor and CA to agree on appropriate salvage methodology following site inspection.

Location: First floor. Refer to Plan (Section 2.0) for further details of location.





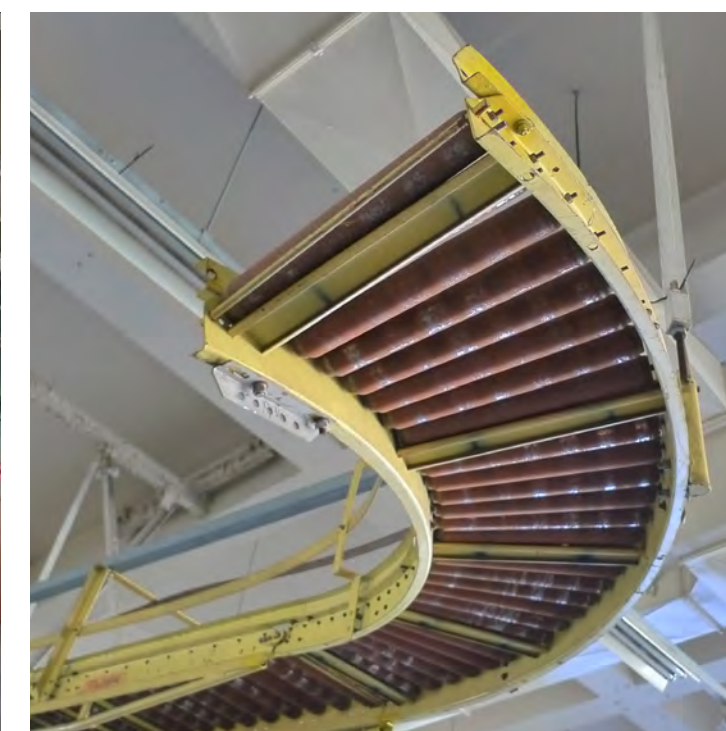
Item #07

Object: Sorting Office Conveyor

Note: Full sorting conveyors numbers V7 and T7 to be inspected by Demolition Contractor and CA to agree extents and methodology of retention.

Note the retention does not include the hanging platform visible in the pictures on this page.

Location: First Floor north-west corner. Refer to Plan (Section 2.0) for further details of location.



I.0 Salvage Plan

I.03 Catalogue (Large items)

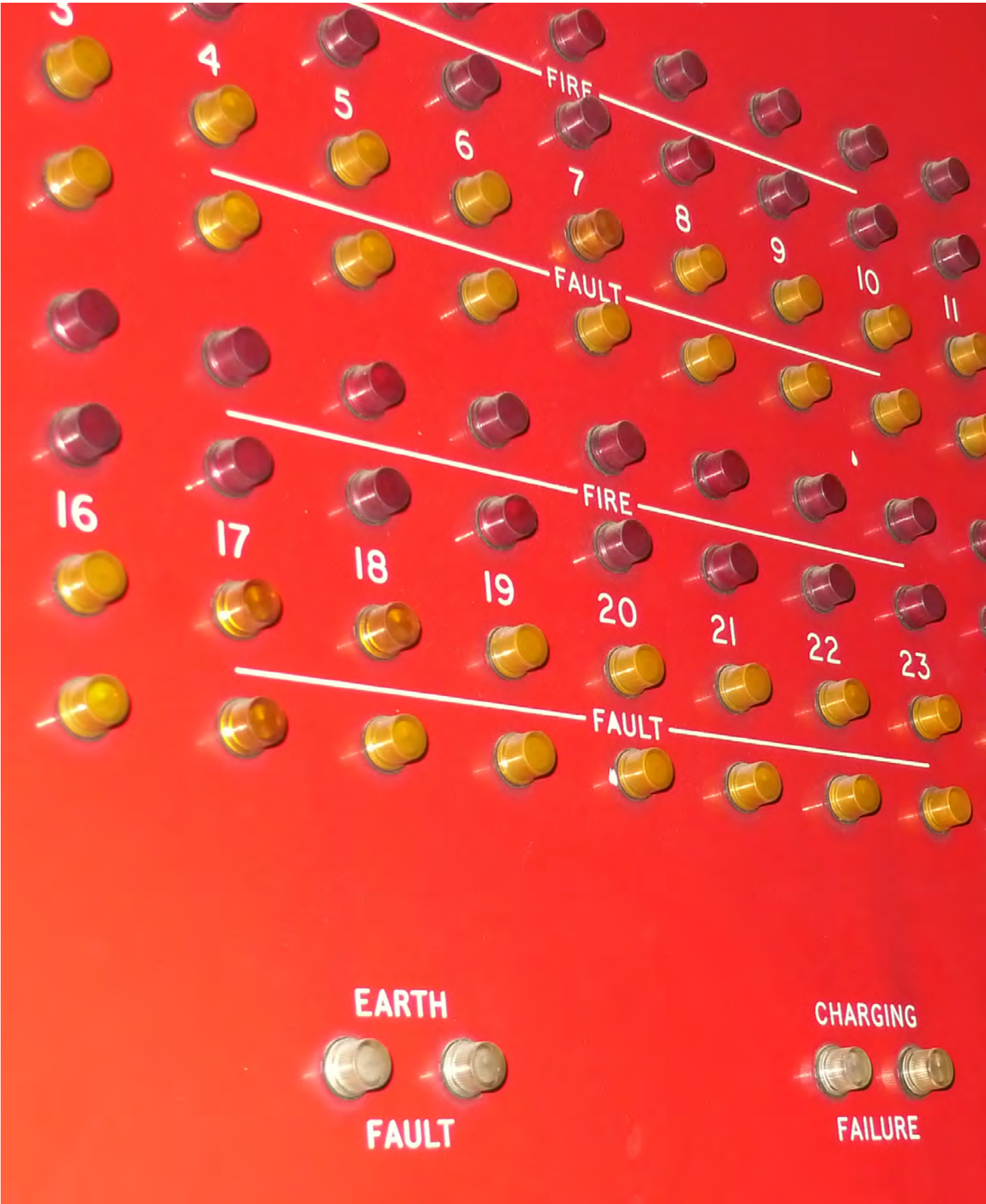


Item #08

Object: Fire Alarm System

Note: Fire Alarm system to be retained.

Location: Fifth floor. Refer to Plan (Section 2.0) for further details of location.



2.0 Salvage Plan

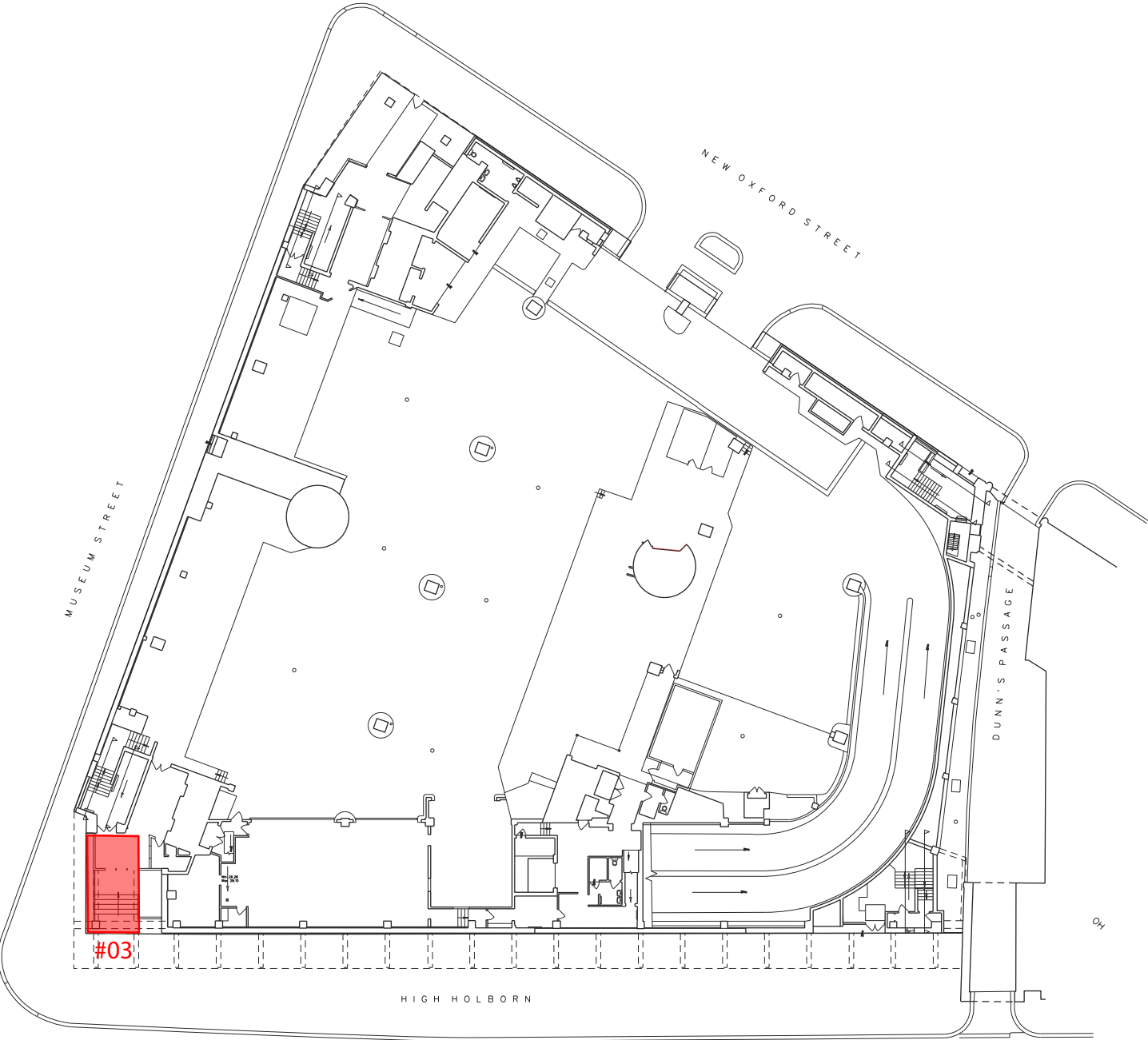
2.01 Drawings

The following pages contain floor plans of 21-31 New Oxford Street. Areas where elements are to be salvaged have been highlighted in red.

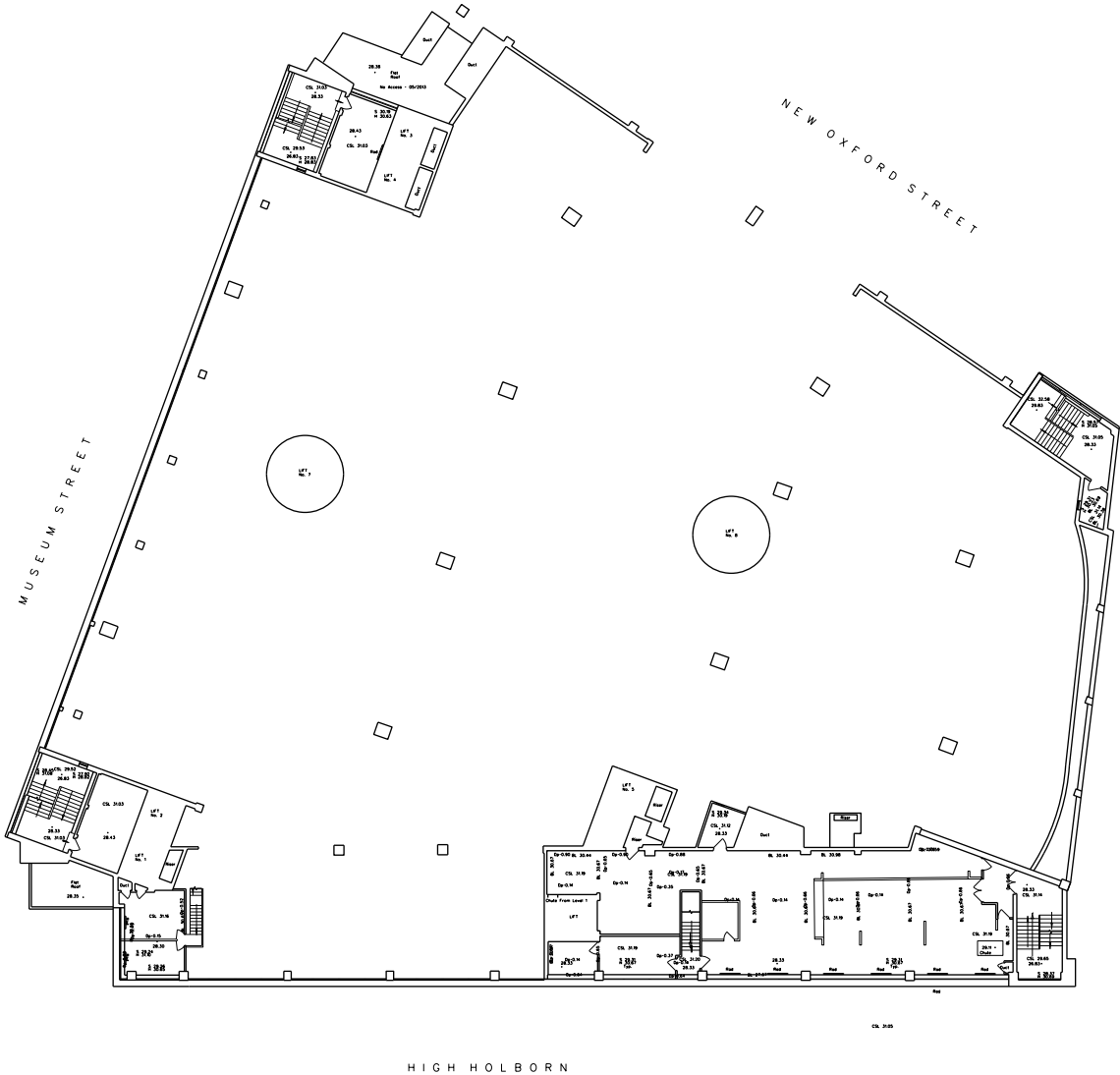


2.0 Salvage Plan

2.03 Ground Floor



1:500 Ground floor plan



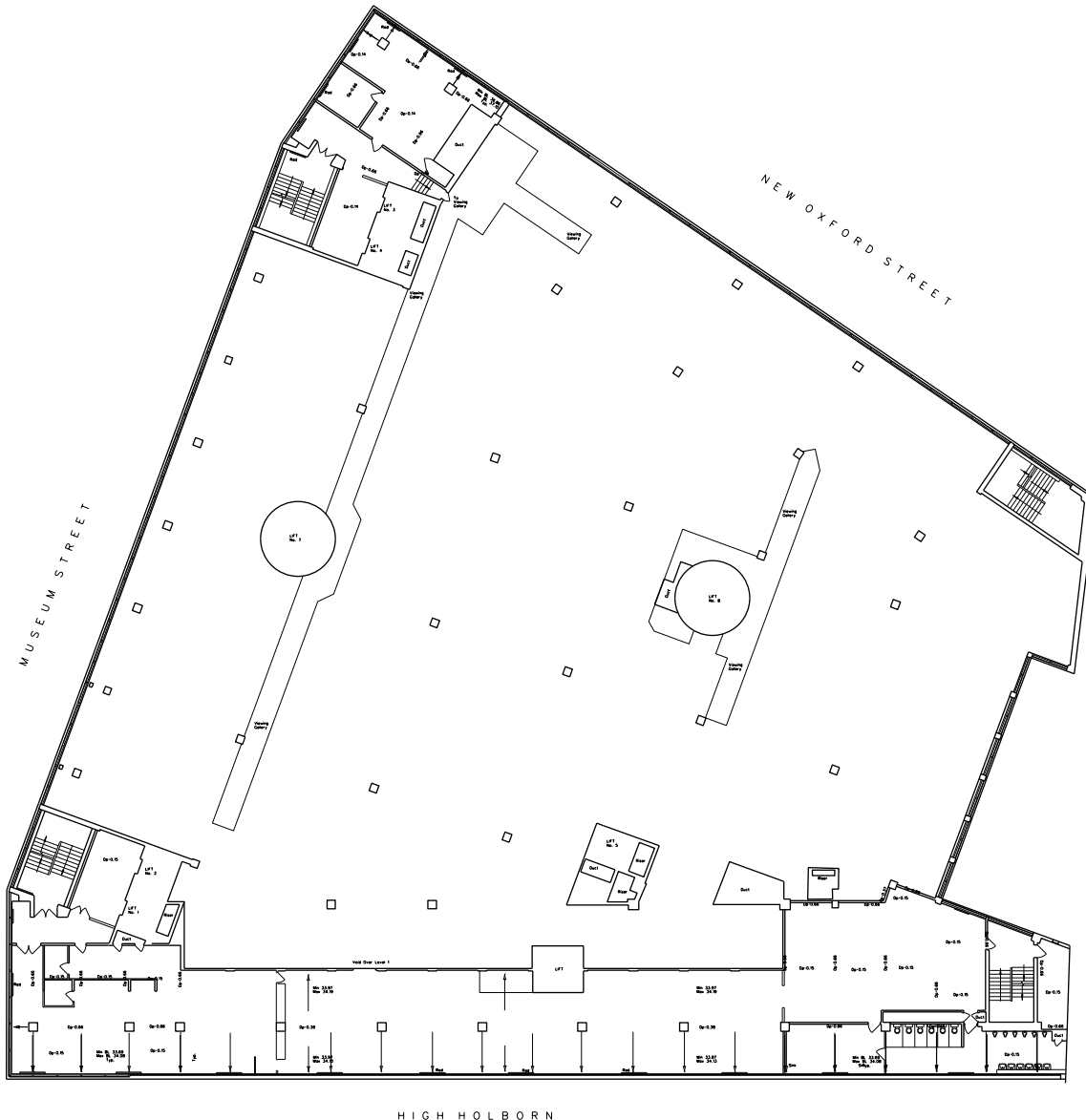
1:500 Ground floor Mezzanine plan

2.0 Salvage Plan

2.04 First Floor



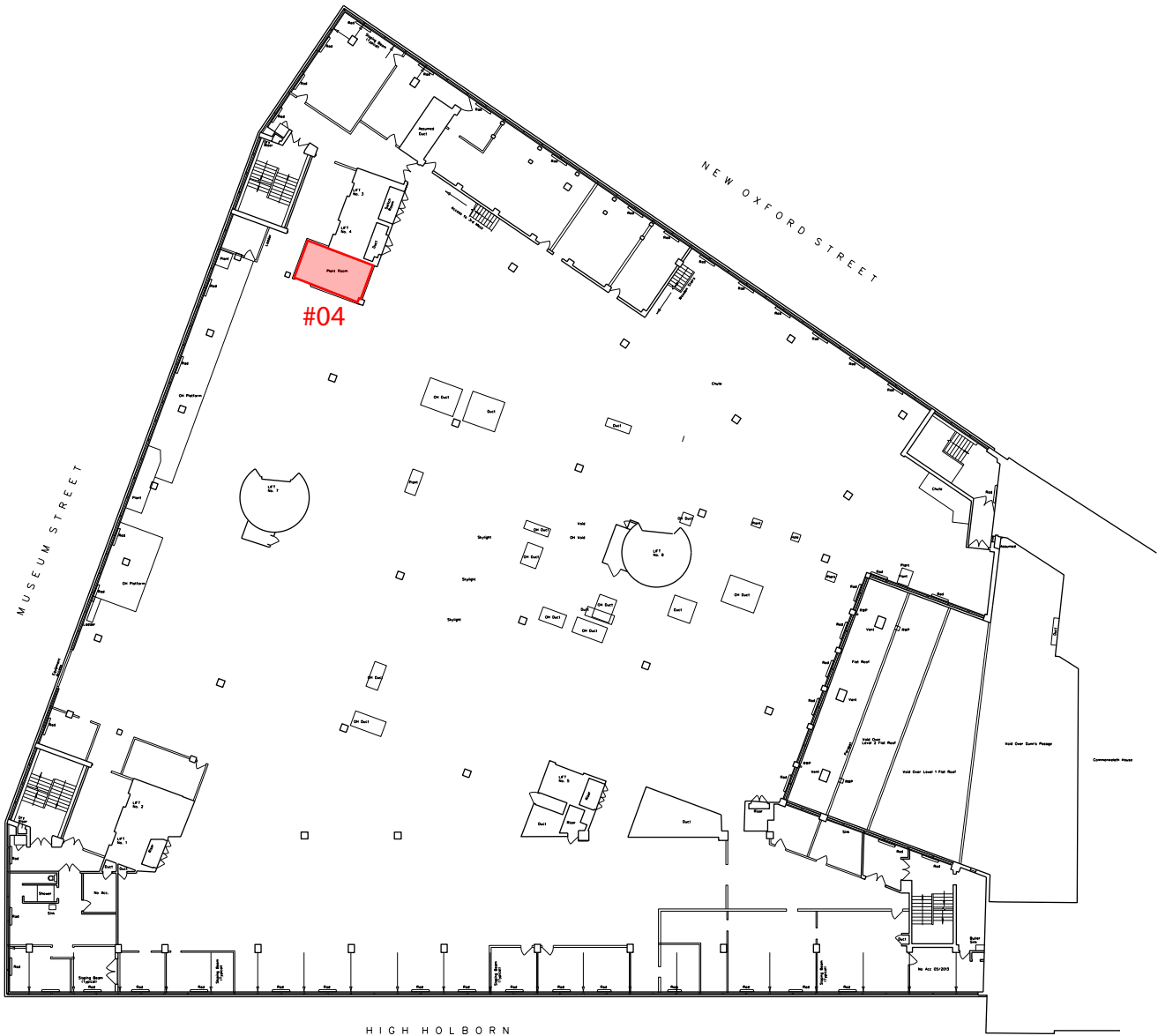
1:500 First floor plan



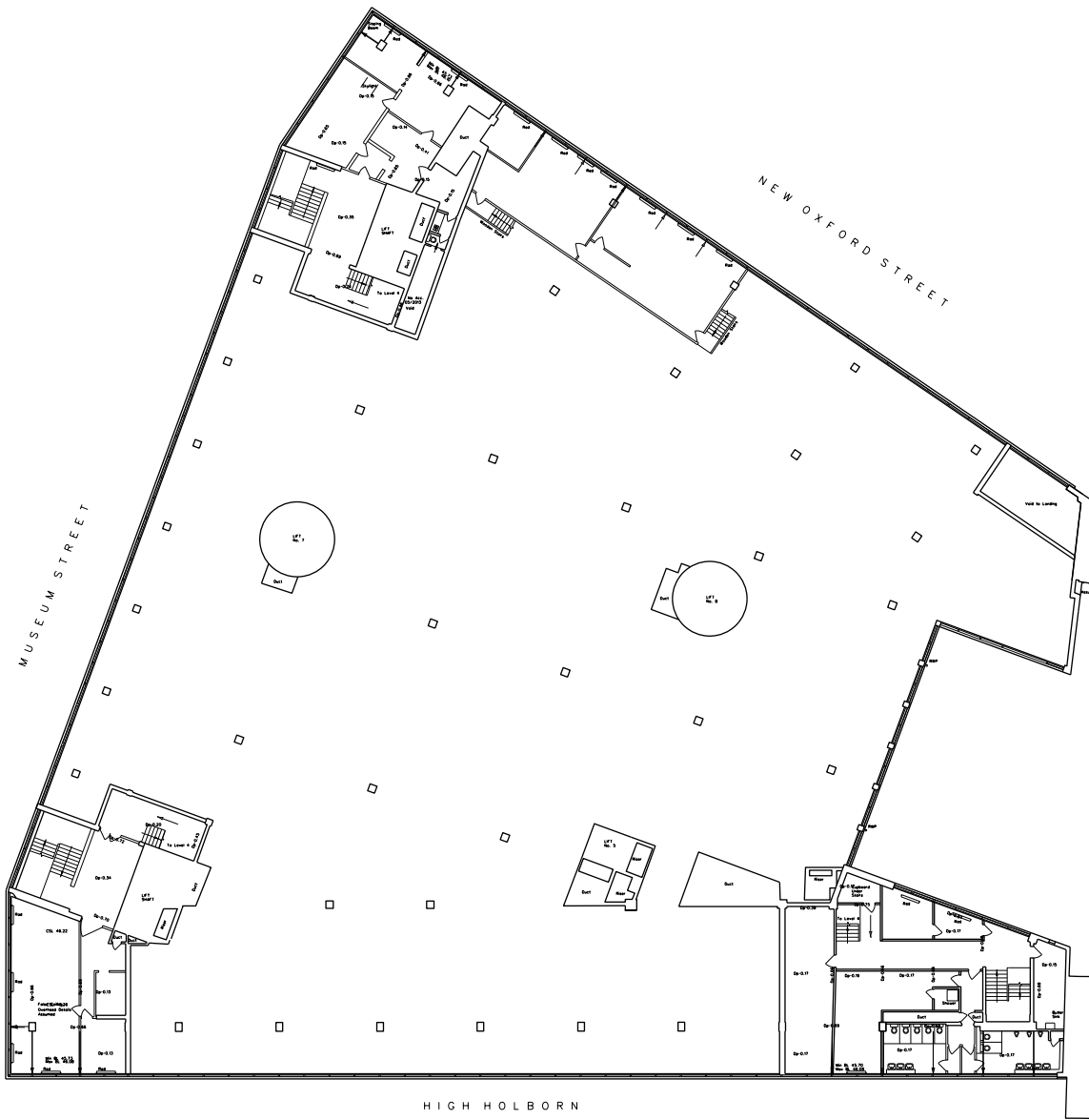
1:500 First floor Mezzanine plan

2.0 Salvage Plan

2.06 Third Floor



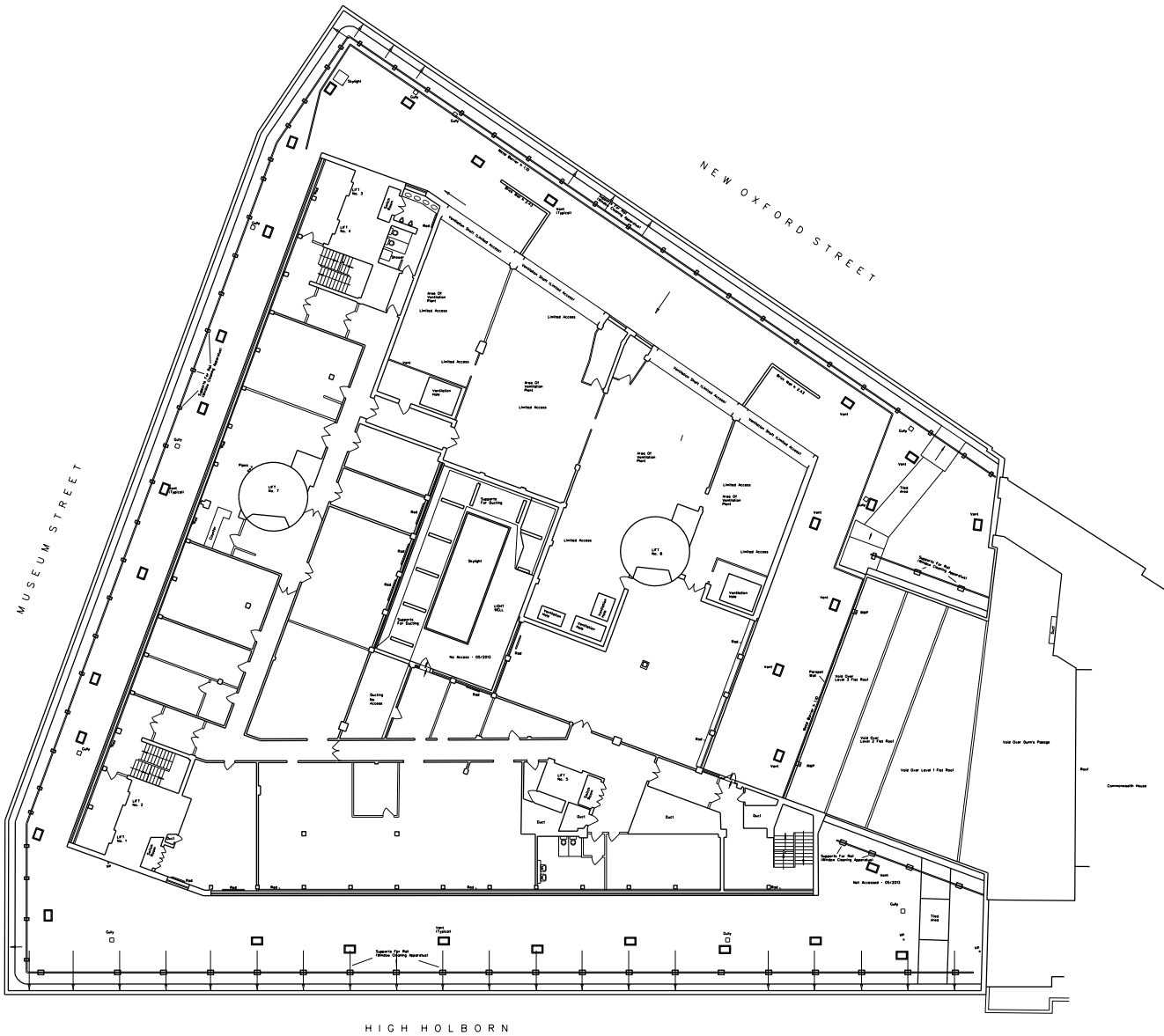
1:500 Third floor plan



1:500 Third floor Mezzanine plan

2.0 Salvage Plan

2.07 Fourth and Fifth Floor



1:500 Fourth floor plan



1:500 Fifth floor plan