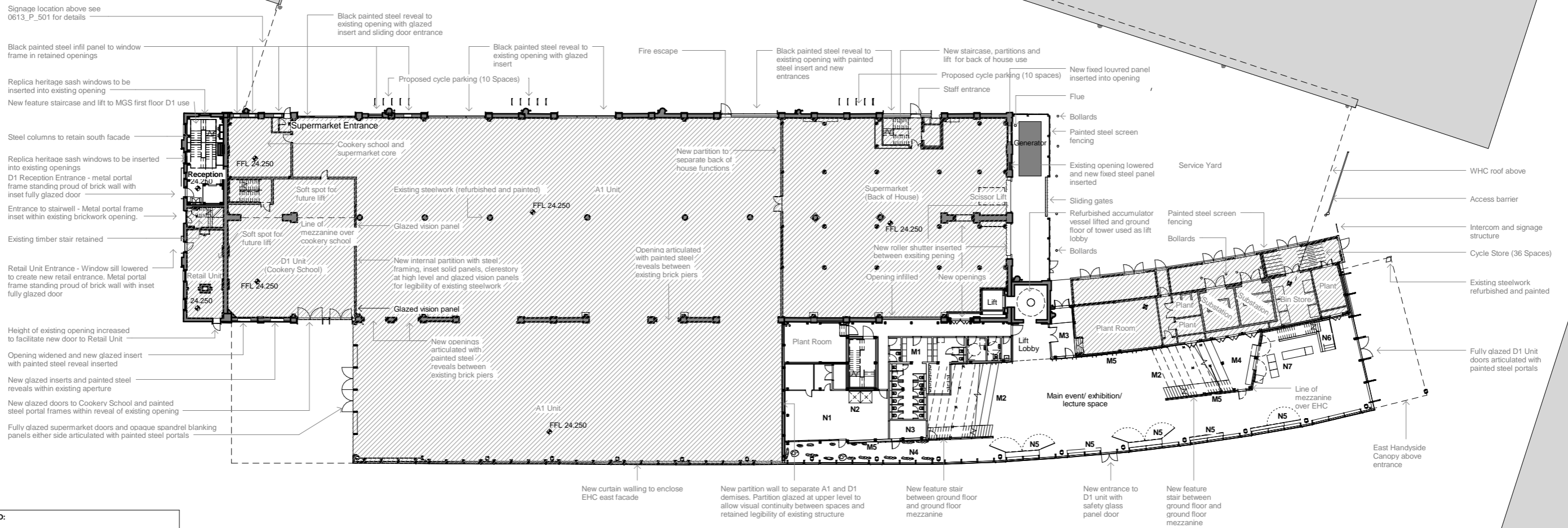


Granary Building and University of the Arts London

Regeneration House

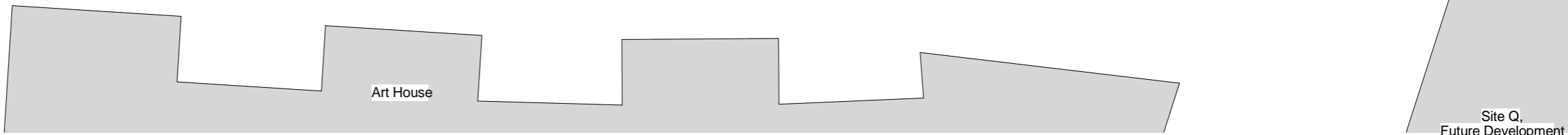
Event space beneath West Handyside Canopy



**FIT-OUT DRAWING LEGEND:**

Please note - for clarity, notes on the drawing are as-previously approved, and new notes & information are detailed below:

M1. WC core reformatted to increase provision and provide additional storage  
M2. Setting-out of feature stair adjusted to improve audience viewing angles  
M3. Lift lobby access reformatted to support safe means of escape  
M4. Area beneath mezzanine enclosed with walls & large format doors to house security office & cloak store  
M5. Timber framework & lining added to mezzanine wall to support acoustic panels & display material  
N1. Kitchen with associated plant & storage located beneath mezzanine and bounded on eastern side with partially glazed wall  
N2. Indicative position of dumb waiters serving restaurant at mezzanine level  
N3. AV&IT room located beneath mezzanine  
N4. Winter Garden use along narrow 'corridor' proposed, to animate view from Handyside Park  
N5. Built in joinery to inside face of EHC facade panels to provide storage, surfaces for display, acoustic panels and 'pop-up' furniture. Joinery sits within outline of facade panel and is designed so as not to impact the heritage strategy for the east facade.  
N6. New stair to mezzanine level to enhance circulation strategy  
N7. Reception desk indicated



Revisions	By	Chk	Revisions	By	Chk	Notes
1. 150803 Draft for Information	CH	EM				
A 150807 Draft for Information	CH	EM				
B 150825 For Approval	CH	EM				
C 150827 For Approval	CH	EM				

Notes

1. These proposals relate only to the parts of the building and canopy to be occupied initially by Guardian News & Media; they do not relate to those hatched areas to be occupied initially by Waitrose pursuant to Reserved Matters approval reference 2014/1433/P and Listed Building Consent reference 2014/1436/L.

2. Drawing to be read in conjunction with 0613\_P\_101 and 1314\_PC\_101

**Bennetts Associates Architects**

1 Rawstone Place London EC1V 7NL  
T +44 (0) 20 7520 3300 F +44 (0) 20 7520 3333  
E mail@bennettsassociates.com

Project  
**Guardian Space**  
Guardian News & Media

Drawing Title  
**For Approval**  
Ground Floor Plan  
Proposed

Drawing Number  
**1314\_P\_101**

Scale @ A3  
1 : 500

Scale @ A1  
1 : 250

Revision  
**C**

Revision Date  
180827

Project No. 1314

YY MM DD