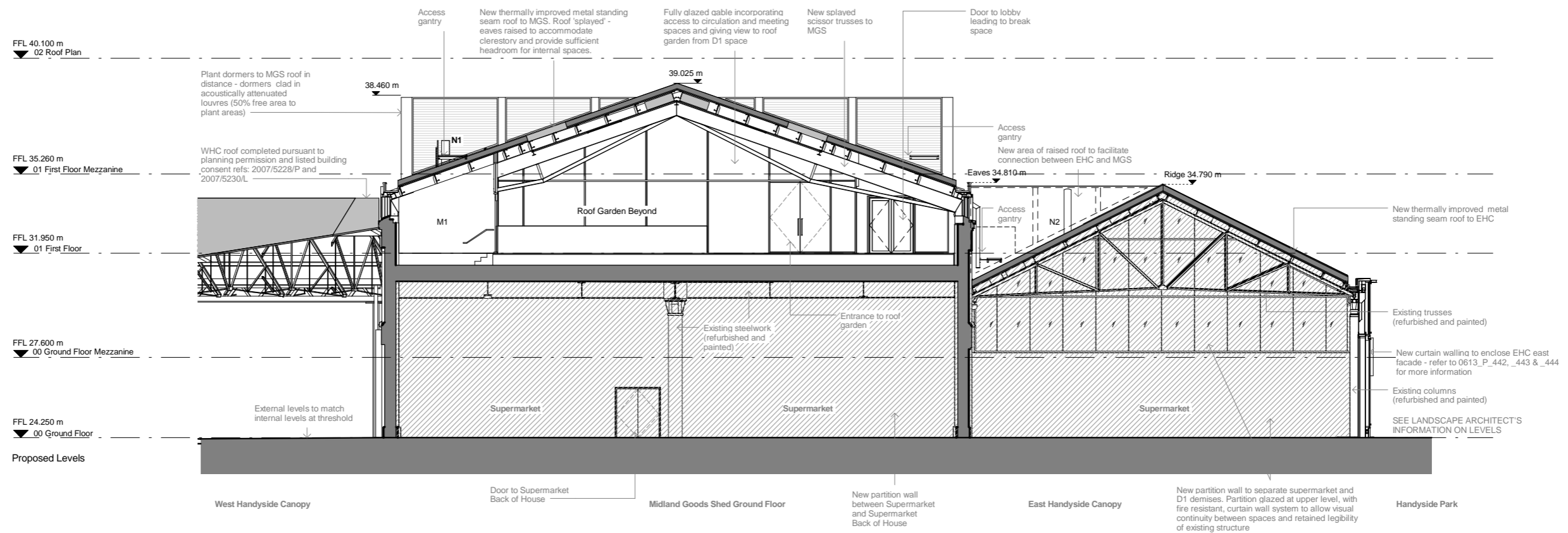


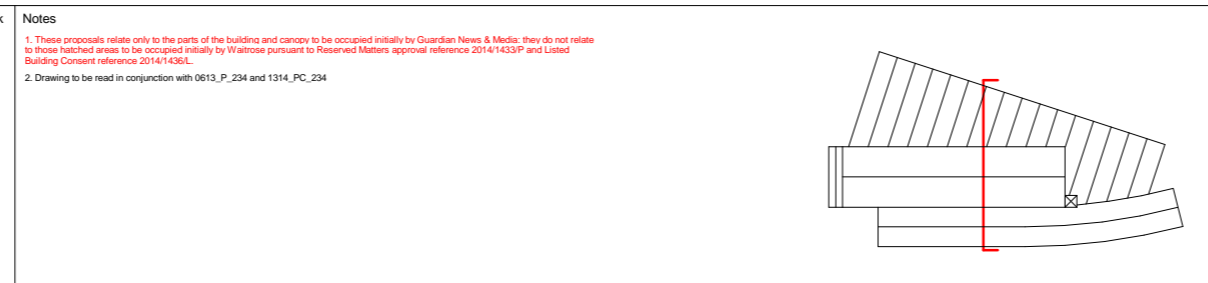
FIT-OUT DRAWING LEGEND:

Please note - for clarity, notes on the drawing are as-previously approved, and new notes & information are detailed below:

M1. Plant space extended to accommodate fit-out equipment
 N1. 6 no. condensers located on roof garden terrace with acoustic and visual screens to mitigate sound impact and protect views from WHC & lower level of roof garden.
 N2. Kitchen extract (conical accelerator)



Revisions	By	Chk	Revisions	By	Chk	Notes
V 150803			Draft for Information	MH	EM	1. These proposals relate only to the parts of the building and canopy to be occupied initially by Guardian News & Media; they do not relate to those hatched areas to be occupied initially by Waitrose pursuant to Reserved Matters approval reference 2014/1433P and Listed Building Consent reference 2014/1436L. 2. Drawing to be read in conjunction with 0613_P_234 and 1314_PC_234
A 150807		Draft for Information	MH	EM		
B 150825		For Approval	CH	EM		
C 150827		For Approval	CH	EM		



Bennetts Associates Architects

1 Rawstone Place London EC1V 7NL
 T +44 (0) 20 7520 3300 F +44 (0) 20 7520 3333
 E mail@bennettsassociates.com

For Bennetts Associates' electronic information issue disclaimer - www.bennettsassociates.com/information/disclaimer/

Project: **Guardian Space**
 Guardian News & Media

Drawing Title: **For Approval Section HH Looking North Proposed**

Drawing Number: **1314_P_234**

Scale @ A3: 1:200
 Scale @ A1: 1:100

Revision: **C**

Revision Date: **150827**

Project No. **1314**

YY MM DD