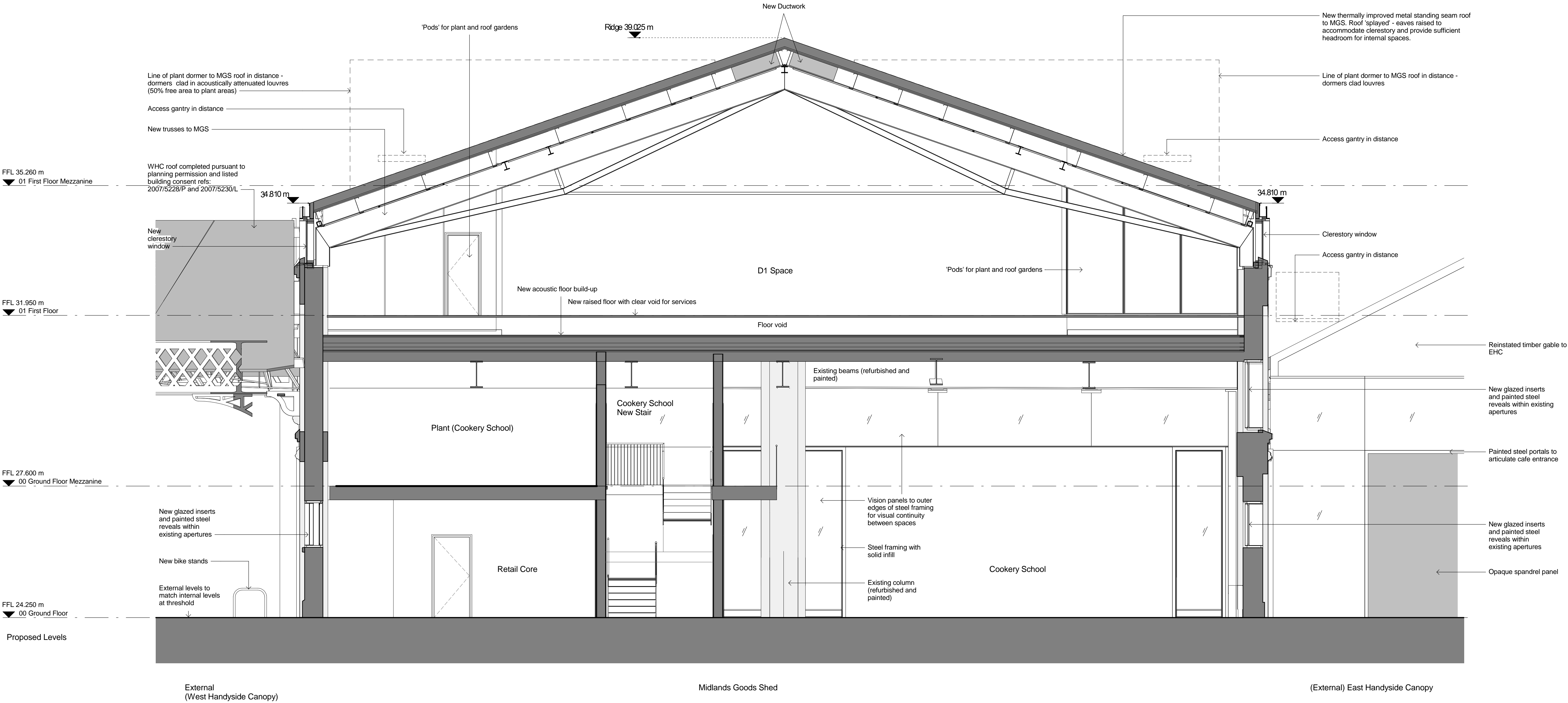


FFL 40.100 m  
▼ 02 Roof Plan



Revisions

1	131126	DRAFT
A	140114	DRAFT
B	140126	For Approval
C	140204	For Approval

By Chk

KC	EM
KC	EM
HL	EM
AB	EM

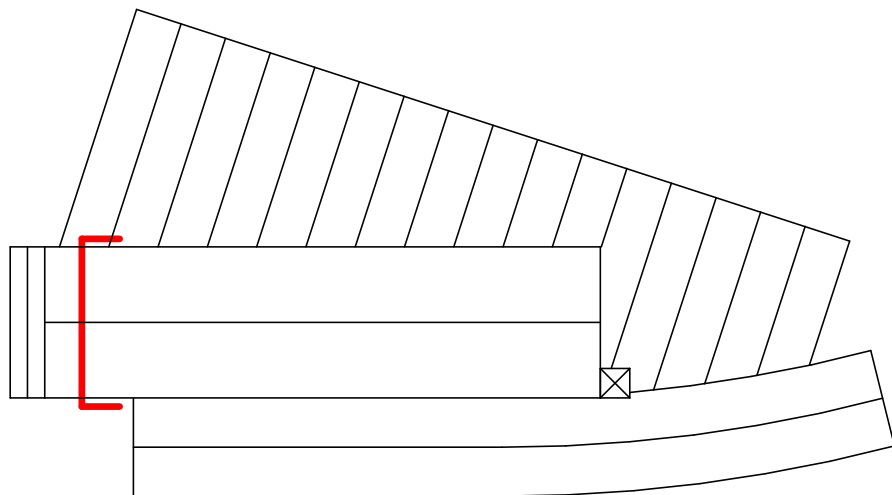
Revisions

By Chk


Notes

Refer to Townshend Landscape Architects drawings for details of the public realm landscape proposals

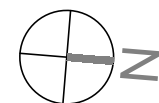
Please note: The ridge height of the East Handyside Canopy varies across its length. For purposes of clarity, the value shown on all drawings has been taken as an average value.



Bennetts Associates Architects

1 Rawstorne Place London EC1V 7NL  
T +44 (0) 20 7520 3300 F +44 (0) 20 7520 3333  
E mail@bennettsassociates.com

For Bennetts Associates' electronic information issue disclaimer -  
[www.bennettsassociates.com/information/disclaimer/](http://www.bennettsassociates.com/information/disclaimer/)



0 0.5 1 1.5 2 2.5m  
Scale 1:50

Project

Midland Goods Shed  
Argent

Drawing Title

For Approval  
Section FF looking North  
Section through Cookery School & Retail Core  
Proposed

Drawing Number  
0613\_P\_232

Scale @ A3  
1 : 100

Scale @ A1  
1 : 50

Project No.

0613

Revision

C

Revision Date

140204

YY MM DD