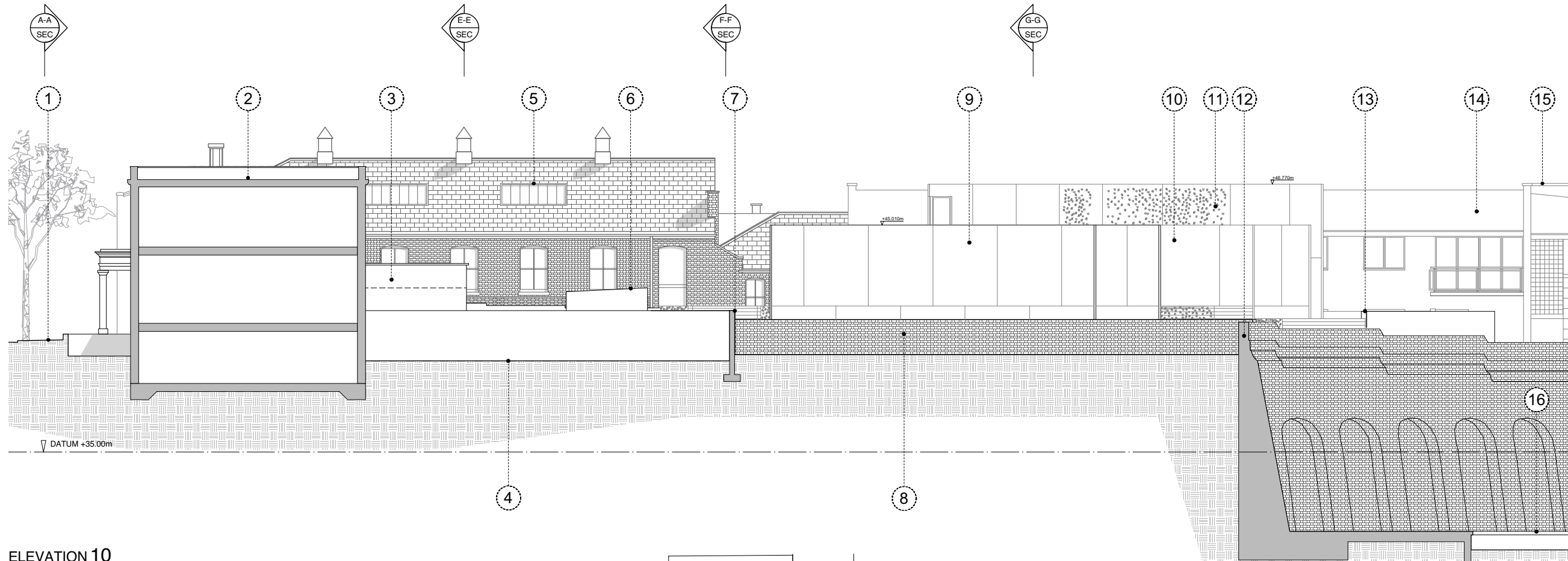
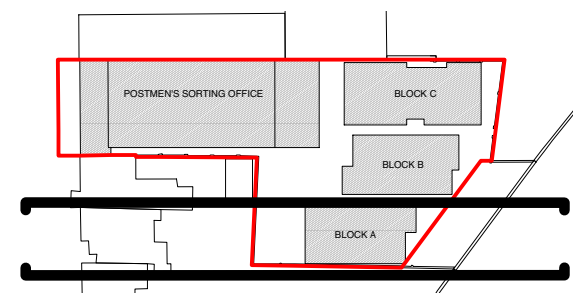
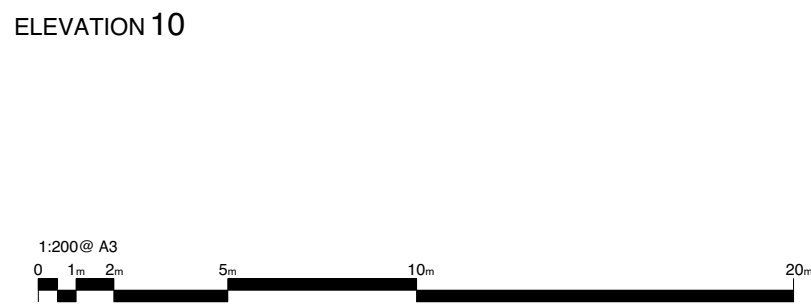


1. Kentish Town Underground Station platforms.
2. Boundary wall and arches to station.
3. Smooth finish, grey aggregated concrete planter and retaining structure.
4. Smooth finish, grey aggregated concrete planter and retaining structure to boundary wall.
5. Communal allotments.
6. Outline of Block B in front.
7. Pigmented concrete walls to match adjacent block colour.
8. Perforated metal fence panels.
9. Block A; pigmented concrete cladding panels.
10. Textured finish to pigmented concrete, angled in at reveals to entrances.
11. Perforated filigree in concrete panels above entrances.
12. Glazing continued behind filigree.
13. Entrance to Block A, flat 2.
14. Grasses and Reeds planted through metal grille over drainage channels in front of glazing to hallway stairs.
15. Entrance to Block A, flat 1.
16. Grasses and Reeds planted through metal grille over SUDs at base of ramp, with perforated metal bench.
17. Feature tree at arrival space.
18. Smooth finish, grey aggregated concrete planter and balustrade to ramp.
19. New stairs and ramp, with granite effect, plank paving.
20. Outline of Postmen's Sorting Office in front.
21. Planting to boundary line.
22. Existing brick boundary wall.



1. Leighton Road.
2. Neighboring house, No. 00 Leighton Road.
3. Neighboring extension.
4. Neighboring gardens.
5. Postmen's Sorting Office.
6. Shed in neighboring garden.
7. Brick boundary wall.
8. Brick boundary wall.
9. Block A.
10. Block B.
11. Block C.
12. Boundary wall and arches to station.
13. Existing brick boundary wall lowered by 3/4 courses.
14. Medical Centre behind.
15. Prominent, brick parapet wall to medical centre; from which the height of Block C is determined.



DO NOT SCALE OFF THIS DRAWING ALL AMBIGUITIES OR DISCREPANCIES TO BE REPORTED TO ARCHITECT BEFORE COMMENCING		Revisions		Project	
Notes		Date:	Rev:	30 Leighton Road	
				Drawing Title	
				Proposed Elevations 9 & 10	
				Scale	Creation Date
				1:200 @ A3	April 2015
				Status	Project No.
				Plan	015
				Drawing No.	Revision
				157	-

STUDIO MACKERETH
 ARCHITECTS
 78 ST PANCRAS WAY
 LONDON
 NW1 0PB
 TELEPHONE + 4 4 (0)20 7042 8335
 EMAIL: INFO@STUDIOMACKERETH.COM