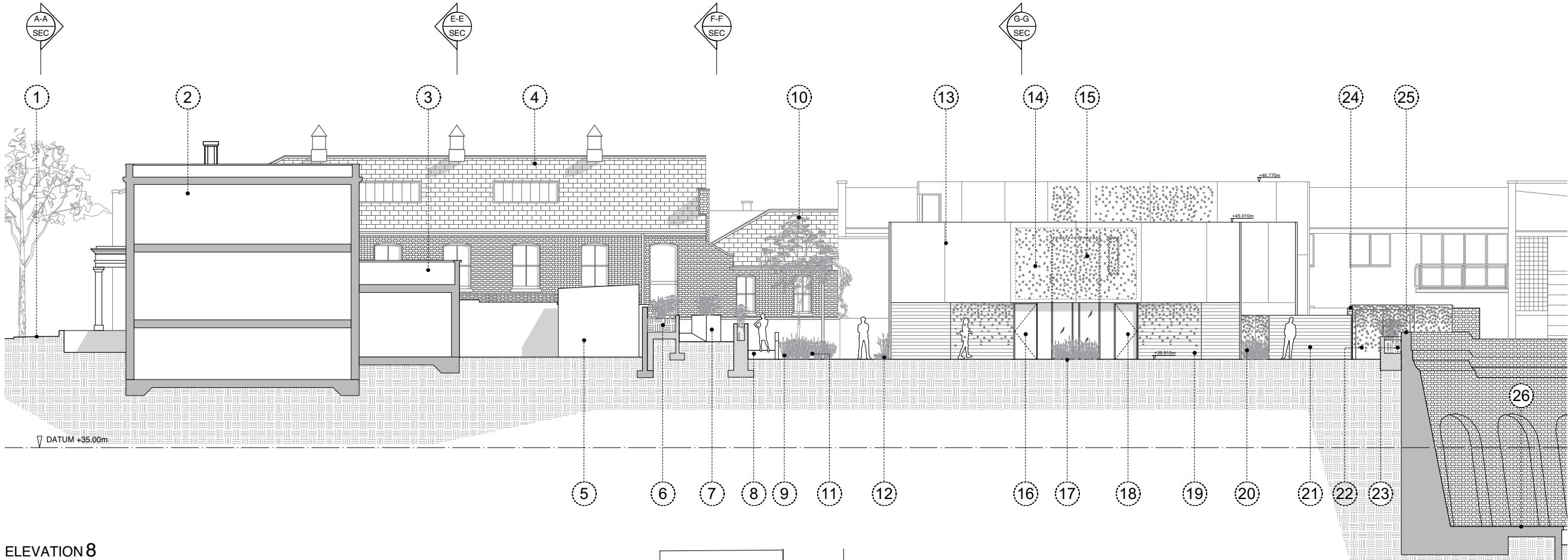
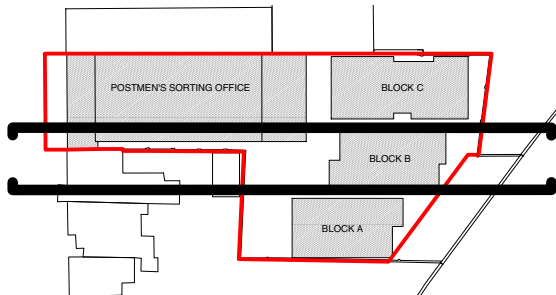


1. Kentish Town Underground Station platforms.
2. Boundary wall and arches to station.
3. Existing brick boundary wall.
4. Existing brick boundary wall lowered by approx. 3/4 courses and gate replaced with perforated metal panel gate.
5. Pigmented concrete walls to match pigment of adjacent block.
6. Perforated metal fence panels.
7. Block B; pigmented concrete cladding panels.
8. Textured, pigmented concrete panels at base angled in to widen walkway.
9. Planting to face of concrete wall set in metal grilles to cover drainage channels.
10. Glazing with black, aluminium finish frames.
11. Perforated metal fence panels.
12. Pigmented concrete walls.
13. Pathway.
14. Upstand to sorting office reinstated in smooth finish, grey, aggregated concrete.
- 15.



1. Leighton Road.
2. Neighboring house, No. 00 Leighton Road.
3. Extension to neighboring house.
4. Postmen's Sorting Office behind.
5. Shed in neighbouring garden.
6. Smooth finish, aggregated concrete planter and retaining structure to boundary wall.
7. Concrete Planters on ramp as balustrade.
8. Ramp, with granite effect, plank paving.
9. Grasses and Reeds through metal grilles covering SUDs drainage.
10. Feature tree to arrival space.
11. Perforated metal bench.
12. Grasses and Reeds through metal grilles covering SUDs drainage.
13. Block B, with pigmented concrete cladding panels.
14. Perforated filigree to cladding panels above entrances.
15. Glazing to hall spaces behind filigree.
16. Entrance to maisonette apartment.
17. Grasses and Reeds planted through metal grilles covering drainage.
18. Entrance to maisonette apartment.
19. Textured, pigmented concrete to base of Block B, angled in at entrances.
20. Perforated metal fence panels.
21. Pigmented concrete to courtyard walls.
22. Perforated metal, secure bike store enclosure for residential units.
23. Smooth finish, aggregated concrete planter and retaining structure to boundary wall.
24. Existing brick boundary wall lowered by approx. 3/4 courses.
25. Brick boundary wall and arches to station.
26. Kentish Town Underground Station platforms.

ELEVATION 8



DO NOT SCALE OFF THIS DRAWING ALL AMBIGUITIES OR DISCREPANCIES TO BE REPORTED TO ARCHITECT BEFORE COMMENCING		Revisions		Project	
Notes		Date:	Rev:	Details:	
		<b>STUDIO MACKERETH</b>		30 Leighton Road	
		ARCHITECTS 78 ST PANCRAS WAY LONDON NW1 0PB		Drawing Title Proposed Elevations 7 & 8	
		TELEPHONE +44 (0)20 7042 8335 EMAIL: INFO@STUDIOMACKERETH.COM		Scale 1:200 @ A3	Creation Date April 2015
Status	Project No.	Drawing No.		Revision	
Plan	015	156		-	